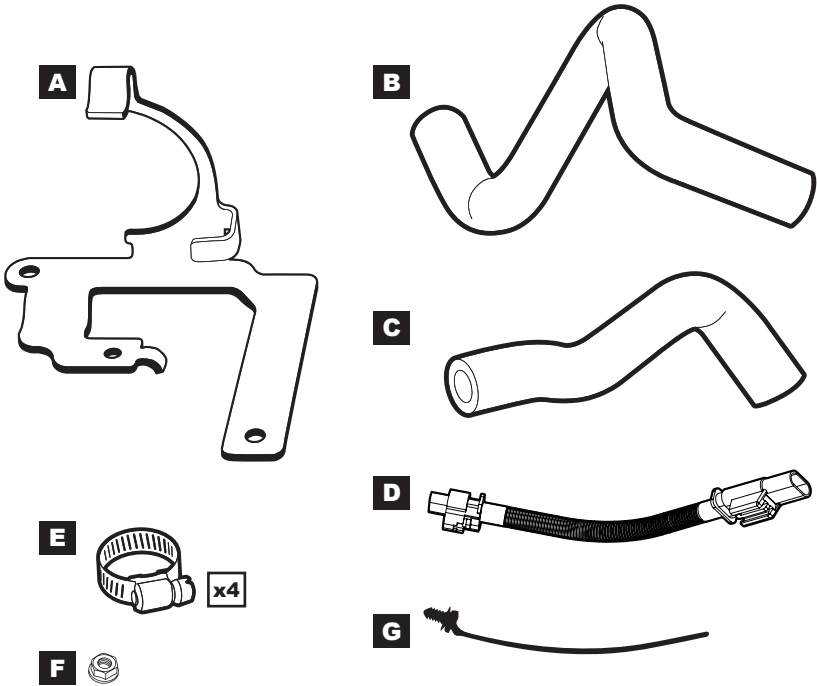


Fuel Coolant Pump Relocation Kit

GM 6.6L Duramax (L5P)



CONTENTS

- A. Stainless Steel Relocation Bracket (1)
- B. Lower Pump Hose (1)
- C. Upper Pump Hose (1)
- D. Extension Harness (1)
- E. Worm-drive Hose Clamps (4)
- F. Stainless Steel Nylock Nut (1)
- G. Zip Tie (1)



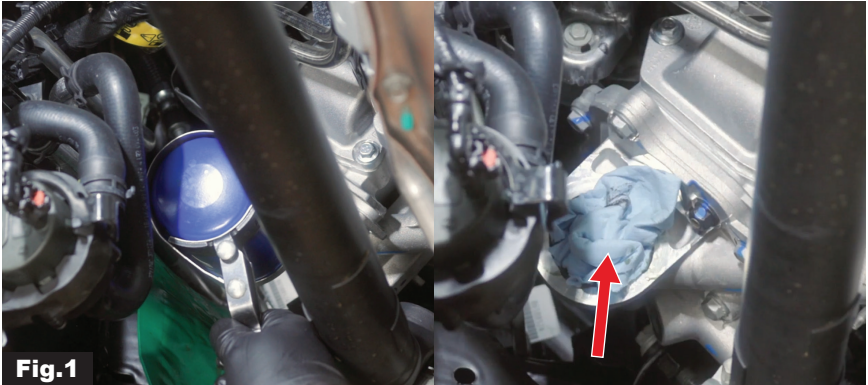
**INSTALLATION
VIDEO**



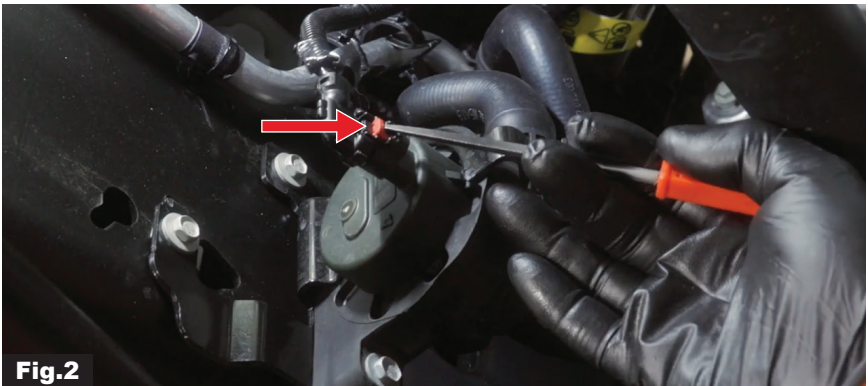
**PRODUCT
RESOURCES**

INSTALLATION

1. Loosen and remove the factory filter. Use a shop towel to plug off the filter housing to stop the oil dripping. **(Fig. 1)**



2. Disconnect the electrical connector from the coolant pump. **(Fig. 2)**



3. Loosen the two bolts securing the pump bracket to the frame rail and the one bolt securing the pump to the bracket. Retain all three bolts for later use. (Fig. 3)



4. Separate and remove the bracket from the pump. (Fig. 4)



5. Disengage the OEM spring clamps on the pump side of the two coolant hoses using a pair of pliers and disengage both connections. Use a bucket to collect any coolant coming out of the hoses and the pump itself. Remove the pump. **(Fig. 5)**



6. Disengage the two spring clamps remaining and remove both coolant hoses. **(Fig. 6)**



7. Install the coolant pump to the PPE bracket. Secure the rubber isolator to the bracket reusing the pump-to-bracket bolt removed in step 3 and the nut provided. **(Fig. 7)**



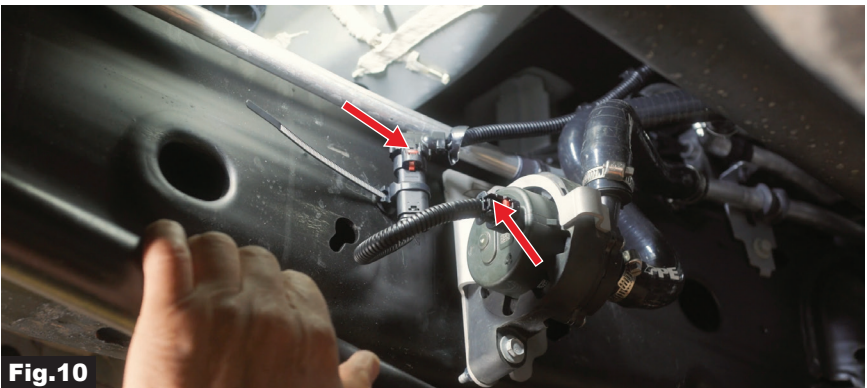
8. Install the pump and PPE bracket assembly to the frame rail using the two bracket-to-frame bolts removed in step 3. **(Fig. 8)**



9. Install the Z-hose to the lower pump and the upper coolant tube using two of the provided hose clamps. Install the L-hose to the upper pump and the lower coolant tube using the other two clamps. (Fig. 9)



10. Install the harness extension. (Fig. 10)



11. Use the zip tie to secure the harness to the frame. Push the “tree” part of the zip tie into the hole in the frame. **(Fig. 11)**



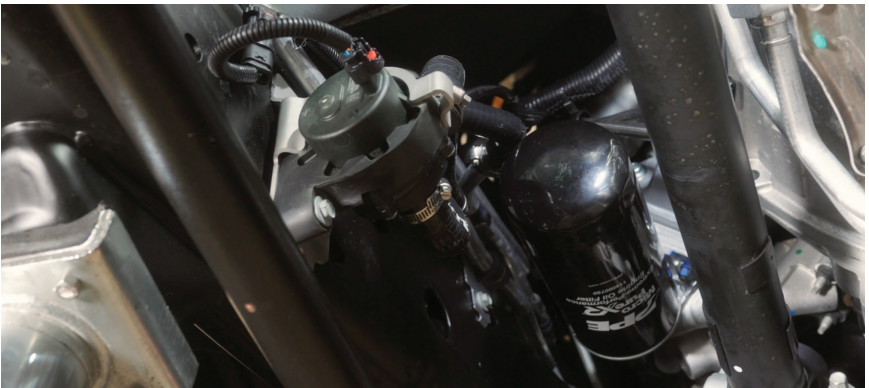
12. Rub a thin layer of oil around the PPE filter gasket, and thread the filter onto the filter housing. To ensure a tight seal, tighten the filter three quarters of a turn once the gasket starts to contact the housing. **(Fig. 12)**



13. Refill the small coolant reservoir with the coolant collected in the bucket and top off engine oil. (**Fig. 13**)



Installation Complete





Page intentionally left blank

DISCLAIMER OF LIABILITY

Performance products can increase horsepower above and beyond factory specifications. Additional horsepower creates more stress on the drive-train components, which could result in drive-train failure.

Note regarding emissions-related, non-E.O.-legal products: THESE PRODUCTS ARE LEGAL IN CALIFORNIA ONLY FOR RACING VEHICLES THAT MAY NEVER BE USED, OR REGISTERED OR LICENSED FOR HIGHWAY OR OFF-ROAD USE.

This agreement sets forth the terms and conditions for the use of PPE products. The installation of this product indicates that the Buyer has read and understands this agreement and accepts the terms and conditions. PPE (Pacific Performance Engineering) Inc., its distributors, employees, and dealers (the "Seller") shall not be responsible for the product's proper use and service. The buyer hereby waives all liability claims. The Buyer hereby acknowledges no reliance on the Seller's skill or judgment to select or furnish goods suitable for any particular purpose and that there are no liabilities which extend beyond the description on the face hereof, and the Buyer hereby waives all remedies or liabilities expressed or implied, arising by law or otherwise (including without any obligation of the Seller with respect to fitness, merchantability and consequential damages), or whether or not occasioned by the Seller's negligence. The Seller disclaims any warranty and expressly disclaims any liability for personal injury or damages. The Buyer acknowledges and agrees that the disclaimer of any liability for personal injury is a material term for this agreement and the Buyer agrees to indemnify the Seller and to hold the Seller harmless from any claim related to the item of equipment purchased. Under no circumstances will the Seller be liable for any damages or expenses by reason of use or sale of any such equipment. The Seller assumes no liability regarding the improper installation or misapplication of its products. It is the installer's responsibility to check for proper installation and if in doubt, contact the manufacturer. The Buyer is solely responsible for all warranty issues from the manufacturer.

LIMITATION OF WARRANTY

The Seller gives Limited Warranty as to description, quality, merchantability, and fitness for a particular purpose, productiveness, or any other matter of Seller's product sold herewith. The Seller shall not be responsible for the products proper use and service and the Buyer hereby waives all rights other than those expressly written herein. This warranty shall not be extended, altered or varied except by a written instrument signed by Seller and Buyer. The Warranty on PPE Manifolds and Up-Pipes Kits, OEM-Length Up-Pipes is three (3) years, a limited lifetime warranty on PPE cast aluminum pans and covers, and a limited lifetime warranty on PPE Transmission Coolers and one (1) year limited warranty on all other PPE products from the date of sale to original buyer and limited solely to the parts contained within the products kit. All products that are in question of Warranty must be returned prepaid to the Seller and must be accompanied by a dated proof of purchase receipt. All Warranty claims are subject to approval by Seller. Under no circumstances will the Seller be liable for any labor charged or travel time incurred in diagnosis for defects, removal, or re-installation - of this product or any other contingent expenses. Under no circumstances will the Seller be liable for any damage or expenses incurred by reason of the use or sale of any such equipment. In the event that the buyer does not agree with this agreement: the buyer may promptly return this product, in a new and unused condition in its original packaging, with a dated proof of purchase to the place of purchase within ten (10) days from date of purchase for a full refund. The installation of this product indicates that the buyer has read and understands this agreement and accepts its terms and conditions.

⚠ CA WARNING: Handling passenger or off-highway motor vehicle parts can expose you to chemicals such as phalates and lead, which can cause cancer and reproductive harm. To minimize exposure, service the vehicle in a well-ventilated area, wear gloves, and wash your hands. For more information see www.P65Warnings.ca.gov/motor-vehicle-parts.



550132