



***baja designs***<sup>®</sup>  
THE SCIENTISTS OF LIGHTING

**2022-2026 Chevrolet Silverado 1500  
Behind the Grille Light Bar Mount Kit**

**S8 30" light**

**99-1020, 99-1021**



2950 Norman Strasse San Marcos, CA 92069

Phone 760-560-2252 X3 • Fax 760-560-0383

info@bajadesigns.com • [www.bajadesigns.com](http://www.bajadesigns.com)



**baja designs**<sup>®</sup>  
THE SCIENTISTS OF LIGHTING

## LIMITED LIFETIME WARRANTY

Baja Designs proudly offers a LIFETIME WARRANTY against manufacturer's defect on all the products that we manufacture.

These are comprehensive warranties; other than the exclusions below – you're covered. If your LED or HID bulb burns out, you're covered. Additionally, cutting off our connector or changing your lenses does not automatically void your warranty.

### **Exclusions:**

Installation errors, abuse, misuse, or crash damage. You must be the original owner of the product and can supply proof of purchase.

Baja Designs manufactures its own products as well as resells products manufactured by others. Baja Designs makes no express or implied warranties on products not manufactured by Baja Designs including without limitation any warranties or merchantability and fitness for a purpose. We will, however, pass on all warranties made by the manufacturer, who has sole responsibility for performing such warranties.

Baja Designs will pay the freight if your product is less than 90 days old, otherwise defective products must be returned to Baja Designs, Inc., freight prepaid. At our option, we will repair or replace items in question and return them at no charge. If the identical product is no longer available, we will replace it with a similar product of equal value. Baja Designs Inc. will not be responsible for any indirect or consequential damages in connection with defective merchandise.

Items purchased through a Baja Designs authorized dealer must be returned through the dealer. Only available on LED auxiliary lights and product must be in sellable condition at MSRP. Product that has been damaged in any way after the original purchase date will be excluded from this guarantee.

### **Indemnification:**

**Buyer hereby acknowledges off-roading, racing and driving at night are dangerous activities and that the products and/or supplies purchased from Baja Designs are used in an inherently dangerous activity that may endanger life and limb; and in no event shall the seller, or seller's heirs and assigns, be held liable for consequential damages, nor shall seller's liability on any claim for damages arising out of or connected with the sale, delivery, or use of purchased products and/or supplies exceed the purchase price of the products and/or supplies.**

**Buyer is responsible for ensuring that it uses the products (and its vehicle) in accordance with all applicable laws, regulations, guidelines, and standards of care. Buyer acknowledges that some products may only be used when off-roading, and Buyer will comply with all vehicle and road safety guidelines. Buyer is solely responsible for (and will indemnify and hold Bestop harmless for) any claims, losses, damages, fines, fees, costs, or other amounts arising out of Buyer's non-compliance with these provisions.**

**\*\*For a color copy of instructions, visit your vehicle specific application on BajaDesigns.com \*\***

**Required Tool(s):**

- 18mm socket with ratchet



**Parts List:**

P/N 99-1020	<b>(70-3013) (Qty: 1)</b> S8 30" Baja Amber	<b>(64-0122) (Qty: 1)</b> BD Harness	<b>(LTW-LB-2-DS) (Qty: 1)</b> Driver side bracket	<b>(LTW-LB-2-PS) (Qty: 1)</b> Passenger side bracket
P/N 99-1021	<b>(70-3003) (Qty: 1)</b> S8 30" Clear	<b>(64-0122) (Qty: 1)</b> BD Harness	<b>(LTW-LB-2-DS) (Qty: 1)</b> Driver side bracket	<b>(LTW-LB-2-PS) (Qty: 1)</b> Passenger side bracket

**To begin, make sure the vehicle is in park, on level ground and the parking brake is engaged.**

**Retain all factory hardware for reinstallation.**

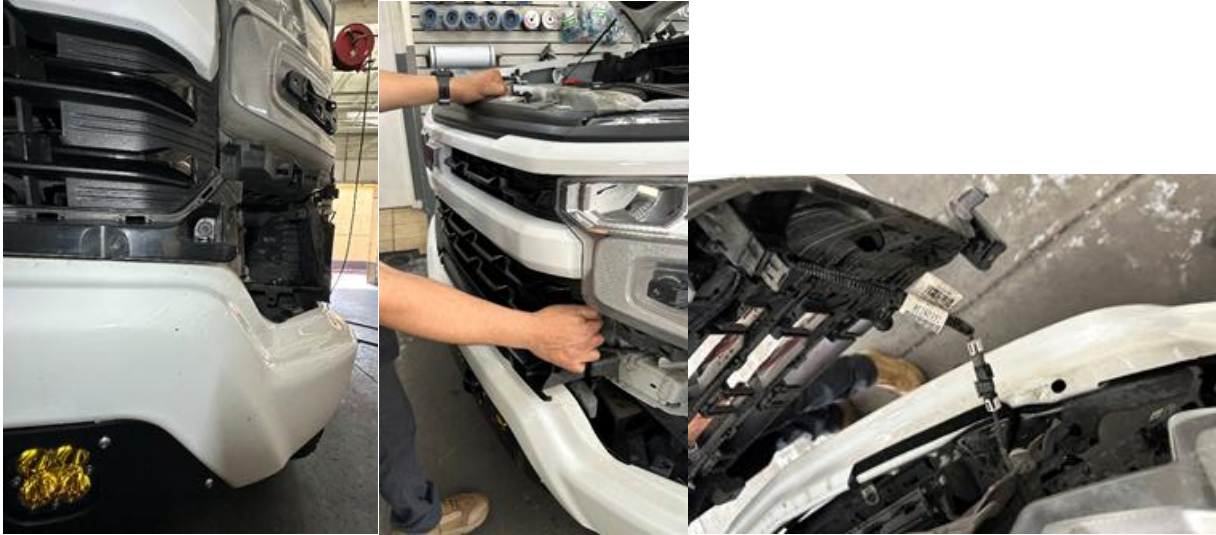
**Step 1: Open the hood and disconnect the battery. Remove the top fascia between the grille shell and core support.**



**Step 2: Remove all hardware from valance then remove the valance as shown in pictures.**



**Step 3: Remove the grille shell to gain access for the light bar installation and unplug all factory harnesses that may be connected. This may take two people. Place on a flat surface with a towel to prevent scratches.**



**Step 4: Remove the two 18mm factory bolts shown in the image, this is going to be the mounting location for the light bar brackets.**



**Step 5: On some models you will see a lip on the factory bumper bracket, if this is the case cut the lip off to ensure a flat mounting surface for the light bar brackets.**



**Step 6: Install the light bar to the brackets using the supplied hardware; attach the light bar brackets using the factory 18mm bolts. Leave all hardware loose for proper alignment.**



**Step 7: Shutters will need to be trimmed or removed from the lower 2-3 to ensure the light bar does not interfere with the factory shutters. This is very important and will cause shutter motor failure please check proper clearance before reassembly.**



**Step 8: Tighten all hardware once the desired light angle is achieved. Test fit the grille shell to ensure proper fitment then reinstall all factory parts. With the truck on the ground, double check the light bar alignment with a level before reinstalling the grille.**

**Step 9: Follow the Baja Designs wiring harness instructions or wire to a switch panel.**

**Step 10: Reinstall all factory components using these instructions in reverse.**

\*Tie all wires away from sharp, hot, and/or rotating components.

\* Re-torque all the fasteners after 100 miles.

\*Your install is now complete! Thank you for choosing Baja Designs.