



SHOP CATEGORIES

WHY S&B

SHOP BY VEHICLE



CONTACT & SUPPORT



0

CONTACT US



S&B AI AGENT

(Order Status, Knowledge Base, & more)



EMAIL customerservice@sbfilters.com



TEXT

(909) 947-0015



CALL

(909) 947-0015

Est. Wait: 4 min

BEFORE YOU START

Before starting this install, please ensure that there is less than a 1/4 tank to make the install easier.

Kit may not fit with the following Aftermarket Parts installed:

Body Lift or Lowering Kit

Aftermarket Non-S&B Traction Bars

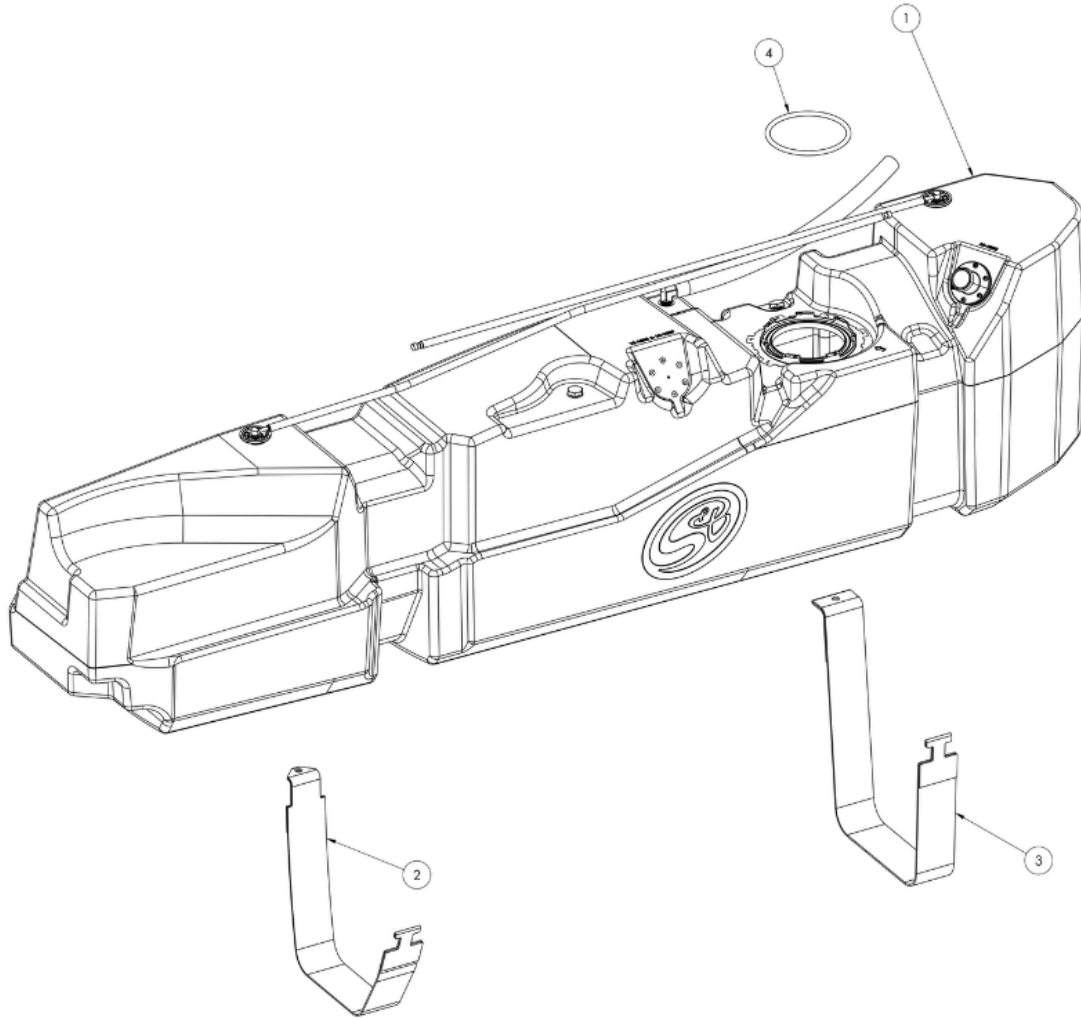
Fuel Tank Skid Plate

- Please read the entire product guide before proceeding.
- Ensure all parts are present.
- If you are missing any of the components, call our customer support at (909) 947-0015.
- Do not work on your vehicle while the engine is hot.
- Make sure the engine is turned off and the vehicle is in Park or the Parking Brake is set.

REQUIRED TOOLS

- Latex Gloves
- 9/32nd Socket
- 5/16th Socket
- 8mm Socket
- 16mm Deep Socket
- Various Extensions
- PVC Cutting Tool
- Rubber Mallet
- Small Pry-Tool
- Pick Tool

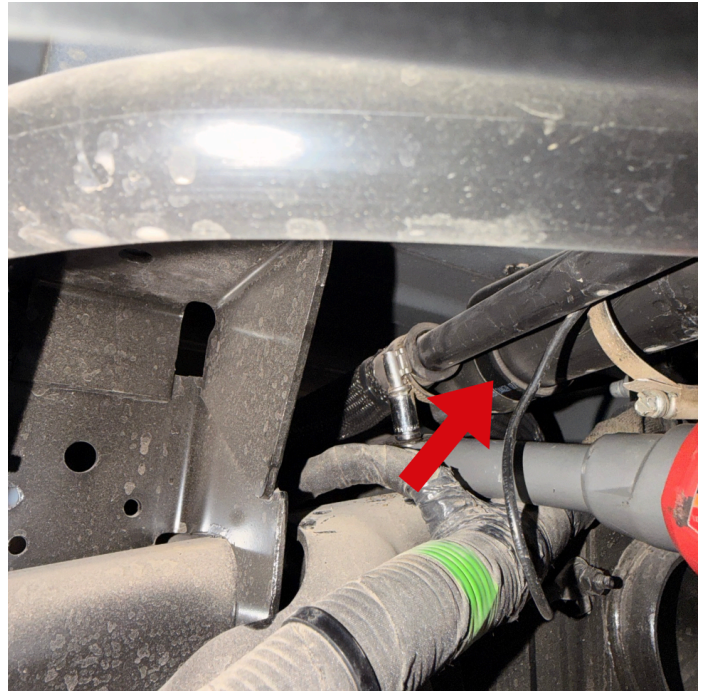
Cookie Preferences



ITEM NO.	PART NUMBER	DESCRIPTION	QTY.
1	TL10-1033-UT	Fuel Tank	1
2	T11098-01	Front Strap	1
3	T11099-01	Rear Strap	1
4	T11094C-00	O-Ring, 8mm CS, NBR, 50 Duro	1

STEP 1

Start by removing the fill tube from the filler neck using a **5/16th socket**.



STEP 2

Next, go ahead and loosen the hose clamp on the vent line next to the filler tube using a **9/32nd socket**.

Then disconnect both hoses.



STEP 3

Clip off the 2x zip-ties holding the rollover vent line.

STEP 4

Unclip the DEF lines from the top of the fuel tank.

The first location is toward the middle of the fuel tank and the other location is the front right corner, just next to the front strap bolt location.

STEP 5

Cookie Preferences [Click here to prepare for dropping the fuel tank.](#)

Start by placing a transmission jack under the fuel tank, just in front of where the fuel sending unit is located as to not risk damaging the sending unit.

STEP 6

Next, go ahead and unbolt the rear hanger using a **16mm Deep Socket** and **10"+ Extension**.

STEP 7

Then pull the rear bracket down and unhook it from the bracket on the other side of the tank.

Cookie Preferences

****Feel free to bend the strap to make it easier to remove.***

STEP 8

Then do the same thing for the front strap. Using a **16mm Deep Socket** and **10"+ Extension** go ahead and unbolt the front strap and disconnect the 2nd DEF line bracket.

****Please note: The stud may fully come out of the crossmember along with the nut. To reinstall, we recommend placing the stud in a vise to help remove the nut. Then re-install the stud into the cross-member, followed by the S&B mounting strap in a later step, then the original nut.***

STEP 9

Now, it's time to drop the tank a few inches in order to gain more room to undo the connections on the top of the Fuel Sending Unit.

****Ensure you still have some slack in the lines/wires in order to prevent damage.***

STEP 10A

Unclip the red safety clip on the first fuel line connector.

Then depress the button on the connector, then pull up.

STEP 10B

Now it's time to disconnect the electrical connector. Press down on the clip/button on top of the connector.

STEP 10C

Unclip the red safety clip on the 2nd Fuel Line connector.

Then depress the button on the connector to remove it.

STEP 11

Now it's time to fully drop the tank and swap the Fuel

Cookie Preferences .it, Filler Neck, and

Rollover Vent Hose to the S&B tank.

First, we recommend inspecting the inside of the S&B tank to make sure no debris items fell inside prior to installation.

STEP 12

Now, using a rubber mallet and small pry-tool you'll need to hammer off the OEM Locking Ring.

STEP 13

Install the provided O-Ring then swap the OEM Sending Unit into the S&B Fuel Tank.

[Cookie Preferences](#)

Ensure that the tab of the sending unit aligns with the arrow indicator on the fuel tank.

STEP 14

Install the S&B Locking Ring and lock it into position using a Rubber Mallet and small Pry-Bar.

Ensure the ring locks into position by passing the indentation from the tank mounting ring tab.

STEP 15

Loosen the Filler Neck from the stock location on the OEM Fuel Tank, then transfer it to the S&B Fuel Tank.

STEP 16

Install the provided S&B vent hose onto the OEM line. Then tighten down the hose clamp using a **9/32nd socket**.

STEP 17

Install the S&B Fuel Tank into the factory position.

[Cookie Preferences](#)

Ensure that the filler and vent lines are above the frame and not pinched by the frame rail.

STEP 18

Re-install the 2x Fuel Line Connectors (w/ clips) and the Electrical Connector onto the Fuel Sending Unit.

STEP 19A

Next, cut down the vent line to the correct length. For this we recommend using a **PVC Pipe Cutter**.

[Cookie Preferences](#)

*To know where to make your final cut, we recommend having 3-4 inch between the top of the port and the body cross-rail.

STEP 19B

Once cut, take the OEM small hose-clamp from the factory vent hose and tighten it down with a **9/32nd Socket**.

STEP 20

Then attach the filler neck from the S&B Fuel Tank to the Filler Tube. Then tighten the existing hose-clamp using an **8mm socket**.

STEP 21A

Now, run the front roll-over valve line to the rear. Run the line along the drivers side frame rail through the body mount perches.

STEP 21B

Then run the rear roll-over valve line over the top of the tank the the filler line.

Then zip-tie both lines to a sturdy point.

STEP 22

Install the 2x S&B Mounting Straps by installing the strap tongues into the factory cradles, then run the strap around the tank and up to the mounting studs.

Then tighten the OEM nuts down using a **16mm Deep Socket**.

****Important note: The larger strap is for the rear end of the tank.***

STEP 23

Once done, please **check and verify that all connection points are secured and tightened down all the way.**

Your installation is now complete.

Cookie Preferences