



SHOP CATEGORIES

WHY S&B

SHOP BY VEHICLE



CONTACT & SUPPORT



0

CONTACT US



S&B AI AGENT

(Order Status, Knowledge Base, & more)



TEXT

(909) 947-0015



EMAIL customerservice@sbfilters.com



CALL

(909) 947-0015

Est. Wait: 2 min

BEFORE YOU START

Kit may not fit with the following Aftermarket Parts installed:

Body Lift or Lowering Kit

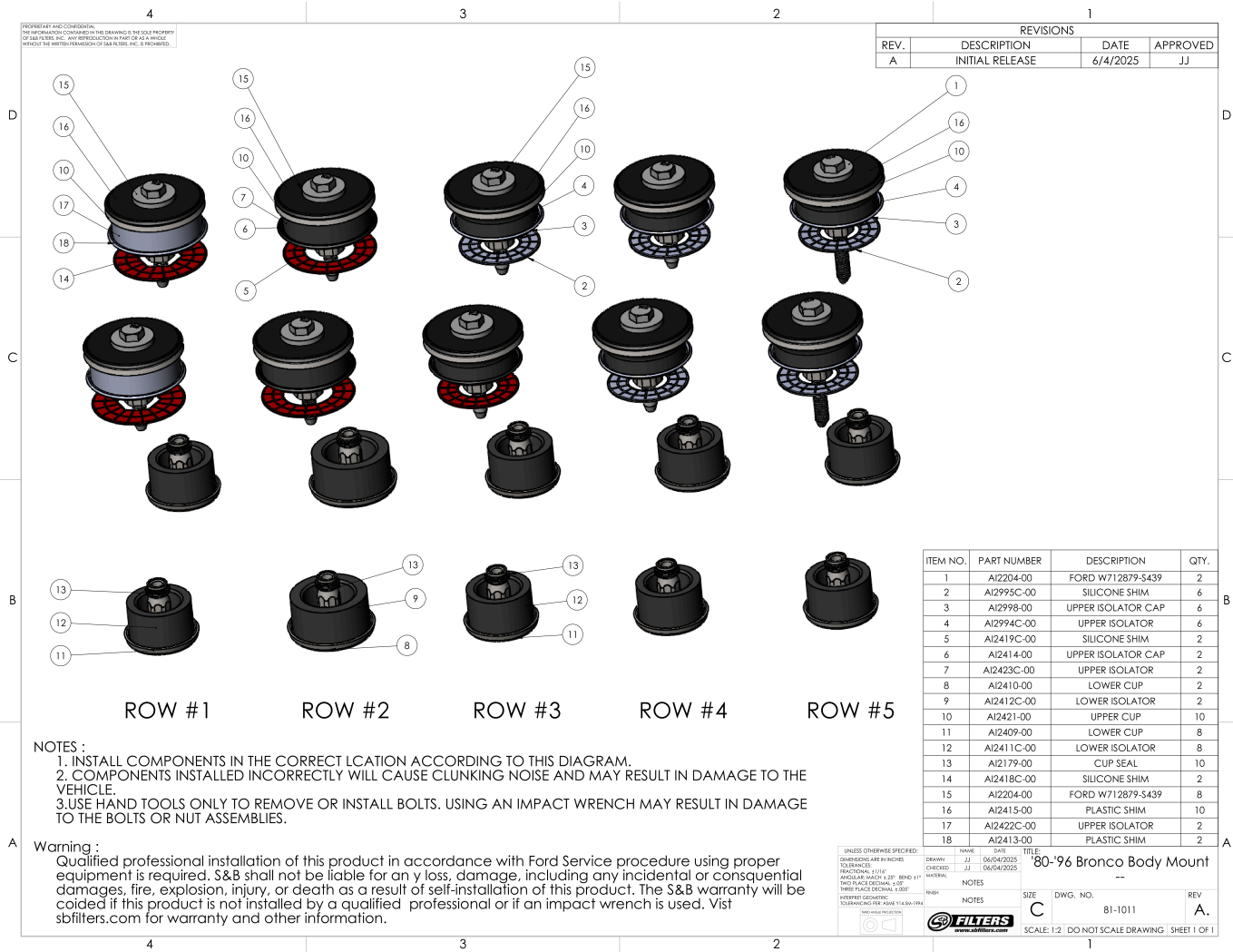
Custom Hood

- Please read the entire product guide before proceeding.
- Ensure all parts are present.
- If you are missing any of the components, call our customer support at (909) 947-0015.
- Do not work on your vehicle while the engine is hot.
- Make sure the engine is turned off and the vehicle is in Park or the Parking Brake is set.

REQUIRED TOOLS

- 15mm Socket
- 5/8th Deep Socket
- Vice Grip
- Various Extensions
- Floor Jacks w/ Lift Extensions
- Torque Wrench (Ft. Lbs.)
- Rubber Mallet
-

Cookie Preferences



STEP 1A

Using a **5/8th** socket, go ahead and remove the **(2)** rear body mount bolts [**5th row**].

**You may have to hold the lower portion of the bolt*

Cookie Preferences

while unbolting it from the top side.



STEP 1B

You may need to use a rubber mallet to force the lower mount out.



STEP 2

Lift up the rear mat/carpet in order to gain access to the **4th** row of body mounts.

Then, using a **5/16th** socket **(2)** body mount bolts.

Cookie Preferences

**If the lower body mount doesn't drop out, go ahead and screw in the provided removal cup in order to remove the old mount. Or you can use a hammer to push it down from above.*

STEP 3

Remove the door floor trim molding from both the driver and passenger side using a **phillips** head.

STEP 4

Remove the lower seat belt molding on both sides. Then pull the carpet back and remove the plastic covers from body mount locations to gain access to the **3rd** row of body mounts.

STEP 5

Using a **5/8th** socket, go ahead and remove both body mount bolts.

*If the lower body mount doesn't drop out, go ahead and screw in the provided removal cup in order to remove the old mount. Or you can use a hammer to push it down from above.

STEP 6

Cookie Preferences

Now, move on to **row 2** which is located on the front floor boards (driver & passenger side).

Lift up the front portion of the carpet to gain access. Then remove the plastic plug.

Using a **5/8th** socket and extension, go ahead and uninstall the factory **2nd** row body mounts.

STEP 7

Use the large removal cup to remove the lower portion of **row 2** body mounts.

STEP 8

Now, let's move up to the front core support to remove the **Row 1** body mounts.

Cookie Preferences

To remove these body mounts, you'll need a couple long extensions and a **5/8th** socket. Both of these mounts can be loosened from the top by unbolted the factory nut and leaving the unique washer in place.

***Please leave the factory front washers (2) in position as they'll be needed when we install the S&B body mounts.**

STEP 9

While still at the front core support body mounts, once you've removed the top nut, go ahead and unbolt the factory bolts from underneath using a **5/8th** socket.

STEP 10

[Cookie Preferences](#) a floor jack and extension, go ahead and jack

up the driver side of the vehicle in order to remove the upper factory body mounts.

***Important:** Be sure that you're jacking up the vehicle from a stable reinforced point of the body, such as a pinch weld. Also, we recommend using two jacks at a time to even raise one side of the body at a time.

***Important:** Do not jack up the vehicle too high as this may result in damaging radiator hoses, brake lines, steering, etc. Go up to where you can barely get the upper body mount off its post.

STEP 11

Take the Hex Shaped S&B Body Mount and install on the front core support mount.

***Each body mount includes a red paper separator: the components above the paper are the upper mounts, and the components below the paper are the lower mounts.**

STEP 12

Then, proceed on installing the upper body mounts for the remaining rows.

Once done, you can lower the drivers side of the vehicle.

STEP 13

Next, proceed to the passenger side and start by jacking up the body similar to what you did on the drivers side.

***Important:** Be sure that you're jacking up the vehicle from a stable reinforced point of the body, such as a pinch weld. Also, we recommend using two jacks at a time to even raise one side of the body at a time.

Cookie Preferences Do not jack up the vehicle too high as this

may result in damaging radiator hoses, brake lines, steering, etc. Go up to where you can barely get the upper body mount off its post.

STEP 14

Take the other Hex Shaped S&B Body Mounts and install on the front core support mount.

***Each body mount includes a red paper separator: the components above the paper are the upper mounts, and the components below the paper are the lower mounts.**

STEP 15

Then, proceed on installing the upper body mounts for the remaining rows.

Cookie Preferences you can lower the passenger side of the vehicle.

STEP 16

Before you begin, ensure that both front core supports have their factory washers in the factory position before installing the provided bolts.

Then install the lower portion of the body mounts.

STEP 17

Now, go ahead and take the provided body mount bolts and install them with the S&B kit

Cookie Preferences

and feed them in through the top of every body mount.

Then, using a **15mm** socket go ahead and tighten down the **10** bolts.

**You will need various extensions for the front core support mount bolts.*

TORQUE SPEC

Torque every body mount bolt to **60 ft.lbs..**

STEP 18

Once all bolts are torques to specification listed above, go ahead and reinstall the body mount cab caps and re-install the trim pieces that were

Cookie Preferences

uninstalled earlier in the install.

STEP 19

Do one last visual inspection ensure that every mount has a top and bottom and that they're correctly seated, both to the body but to the frame.

Your installation is complete.

Cookie Preferences