

23+ CHEVY COLORADO ZR2 FRONT TUBE BUMPER

2023+ CHEVROLET COLORADO ZR2

FBCS3-04



TOOLS REQUIRED

- #4, #6, #8 Allen Tool
- 18mm, 19mm, 21mm, 22mm wrenches
- 7mm, 8mm, 10mm, 12mm, 13mm
15mm, 16mm, 18mm, 19mm sockets
- Zip ties
- Flush cutters
- Trim Tool
- Safety Glasses
- T15, T40 torx tool/socket

SKILL LEVEL

- Novice/Intermediate
 - 1 (you) to 2 persons
- Little skill level required, you can easily install it by yourself however, additional help will be useful

TIME REQUIRED

- 4.5 Hours

Time to install this should only take about four and half hours.

WARNINGS/CAUTIONS BEFORE STARTING INSTALLATION

Before you install this kit – Read and understand all instructions, warnings, cautions, and notes contained in this installation instruction guide. Consult your vehicle owner's manual for proper disconnection of electrical and lifting of vehicle if required for installation of this product.

This install may require some technical skills and knowledge of basic mechanical work. If you do not feel that you are capable of performing this install please take this product to a trained professional.

After reading this guide please contact us with any questions or concerns before installing product.
Customer Service: 855-680-9595

DV8 Offroad is not responsible for any bodily injury or harm to you or your vehicle as a result of an improper install.

Proper installation of this kit required knowledge of the factory recommended procedures for removal and installation of original equipment components. We recommend that the factory shop manual and any special tools needed to service your vehicle be on hand during the installation. Installation of this kit without proper knowledge of the factory recommended procedures may affect the performance of these components and the safety of the vehicle

- Always wear eye protection when operating power tools

Inspect all contents of this package to make sure product is not damaged and all installation hardware has been included. If parts are missing from kit, please be prepared to provide the following information

1. Name of purchase location
2. Bar Code on side of box
3. Date above bar code
4. Date inside box cover

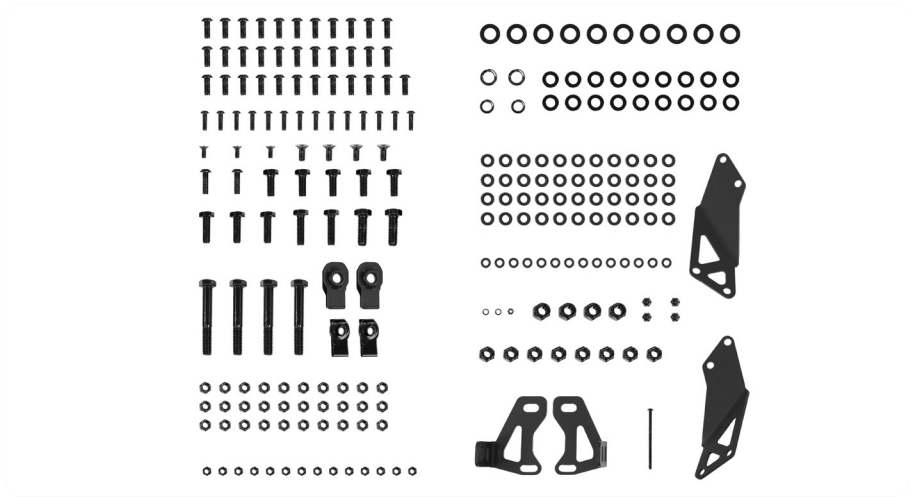


INSTALLATION MANUAL

Begin by unpacking all items and inspecting for missing pieces or damage. If you have any concerns, please contact the company the product was purchased from. Extra hardware may be included with the product.

HARDWARE INCLUDED

- (2) M12x35 Hex Bolts
- (2) M12 clip nuts
- (2) M12 spring washers
- (10) M12 washers
- (2) M10x35 hex bolts
- (2) M10x30 hex bolts
- (2) M10 clip nuts (long)
- (2) M10 spring washers
- (6) M10 washers
- (2) M10 nylon lock nuts
- (4) M12x80 hex bolts
- (4) M12 nylon lock nuts
- (1) M4x70 allen bolt
- (2) M4 washer
- (1) M4 Nylon Lock Nut
- (6) M10x25 hex bolt
- (12) M10 washers
- (4) M6x14 hex countersunk bolt
- (4) M6 cap nuts
- (14) M6x20 allen head bolt
- (14) M6 nylon lock nut
- (28) M6 washers
- (34) M8x20 allen head bolts
- (2) M8x25 allen head bolts
- (24) M8 nylon lock nuts
- (60) M8 washers
- (3) M8x18 hex countersunk head bolt



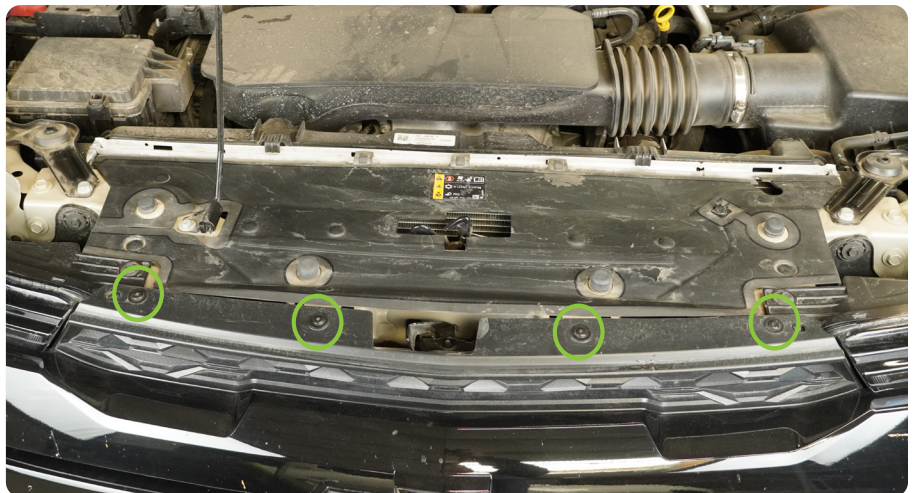
STEP 1 | Park the vehicle in a clear work area. We recommend choosing a spot where the vehicle won't need to be moved during the bumper installation.

Once you have started the disassembly process, we advise against starting the engine or turning the vehicle to accessory mode.



STEP 2 | Open the hood to gain access to the grille mounting hardware.

Using a T15 Torx tool, remove the (4) factory bolt that secure the grille assembly to the radiator support.



INSTALLATION MANUAL

STEP 3 | In each the wheel well, use a T15 to remove the (5) bolts that secure the inner fender to the bumper/grille assembly



STEP 4 | Pull back the inner fender to gain access to the (2) factory bolts that help secure the bumper to fender clips.

Loosen the bolts using a 7mm socket.

THESE CAN BE DIFFICULT TO FIND AND REMOVE. USE AN EXTENSION AND FEEL FOR THEM FIRST. THEY ARE THE PLASTIC BRACKET UP AGAINST THE FENDER PORTION ON THE BUMPER.



INSTALLATION MANUAL

STEP 5 | With a firm grip separate the fender flare from the fender and bumper/grille assembly.

Watch for how clips separate since these can easily break.



STEP 6 | Remove the factory skid plate using a T40 torx tool and a 12mm socket.



STEP 7 | Using a T15 torx tool, remove the (8) bolts that secure the bottom the bumper to the vehicle.



INSTALLATION MANUAL

STEP 8 | Disconnect the front camera and fog light wiring harnesses.



STEP 9 | Remove the bumper/grille assembly. Set the bumper/grille assembly on a covered work bench.



STEP 10 | Disconnect the lower air dam shutter motor.



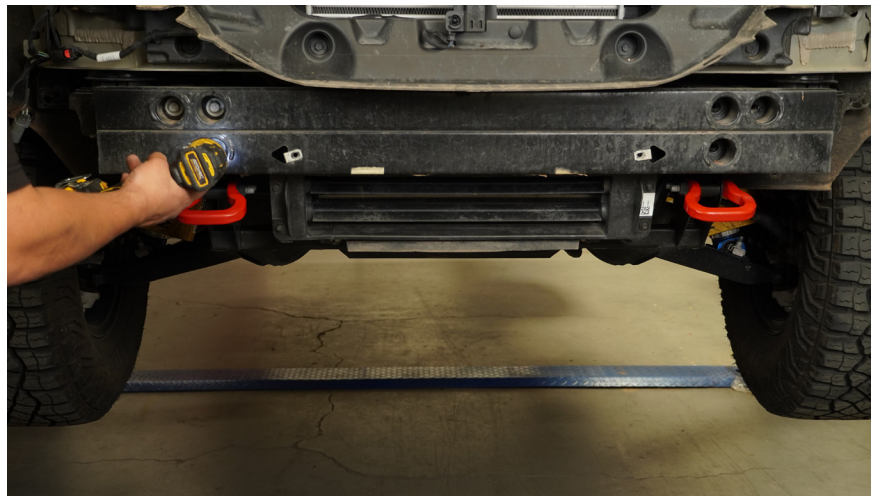
INSTALLATION MANUAL

STEP 11 | Using a 7mm wrench remove the (2) air dam shutter bracket mounting bolts.



STEP 12 | Using a 15mm socket, remove the factory front crash bar and air dam shutters.

This factory crash bar will not be reused, however the shutter motor will be relocated into the bumper later to prevent any codes/errors.





STEP 13 | Using a 18mm socket and an adjustable wrench, remove the factory recovery hooks.



STEP 14 | Moving over back to the bumper/grille assembly, remove the assemblies lower fascia portion.

Start by removing the fog light wiring harness using a trim clip tool to access the bolt that secure the two section together.

Disconnect the fog harness from the fog lights at this time.



INSTALLATION MANUAL



STEP 15 | Use a 7mm socket to remove the bolts on each side that hold the two portions of the bumper together as shown.

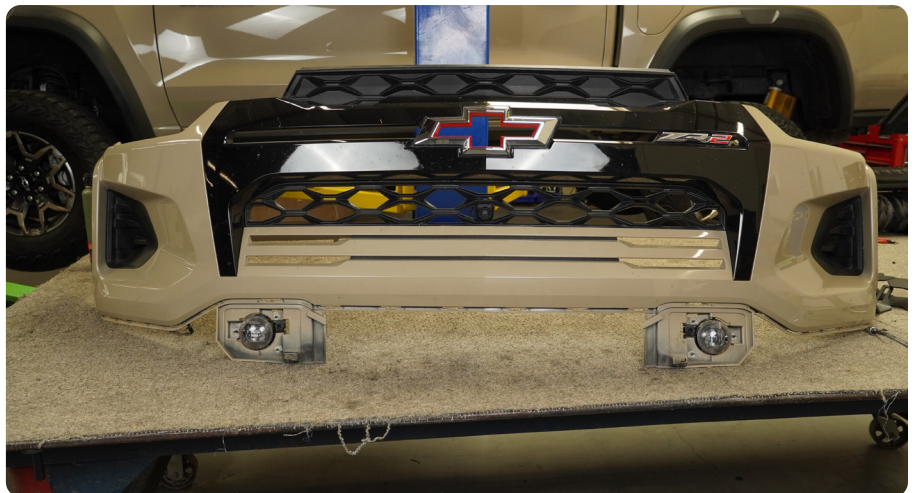


INSTALLATION MANUAL

STEP 16 | Using a trim pry tool, separate the trim clips that loosely secures the lower fascia to the bumper/grille assembly.



STEP 17 | This OE body line is what will be used as our "cut line" for the Spec series bumper.



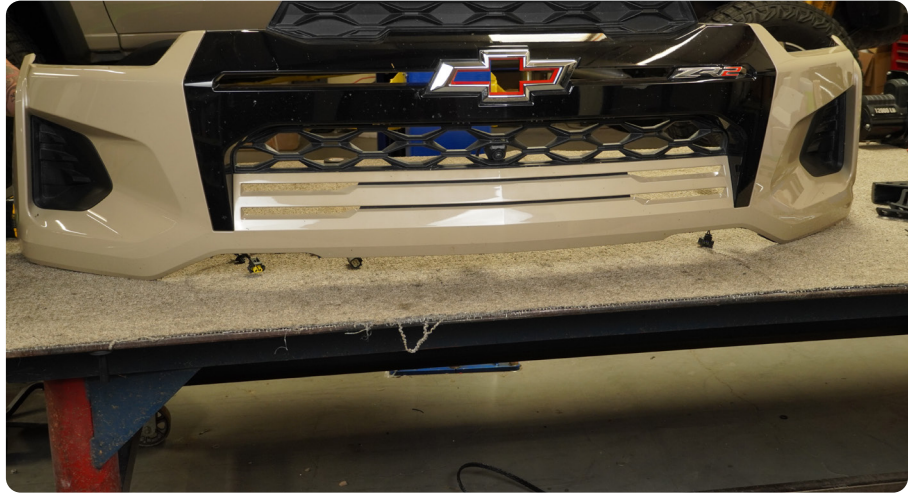
INSTALLATION MANUAL

STEP 18 | Using your preferred cutting tool, cut off the lip that held the lower fascia trim clips, including the fog light housing.

Be careful not to cut into any factory wiring harnesses.

Note: We recommend using zip ties to secure the loose fog light wiring harness. This harness will not be reused in this installation guide.





STEP 19 | Use a file or sand-paper to smooth out any rough edges left over from cutting.



STEP 20 | With the bumper cut complete, we can not assemble the DV8 bumper.

Lay the bumpers center section on to a covered work bench.

If you are planning to run POD lights, loosely mount your chosen 3" POD light to the provided brackets using the hardware that is included with the POD light.



INSTALLATION MANUAL

STEP 21 | To relocate the shutter motor mark a line where the shutters will need to be cut.



STEP 22 | First cut the housing to separate the motor and shutter blades from the housing. (Red dotted lines)



STEP 23 | Remove the housing from the motor/shutter blades.





STEP 24 | Remove the shutters blades from the air dam motor.



STEP 25 | Take blade marked, and cut off the side mounted against the motor assembly.



INSTALLATION MANUAL

STEP 26 | Mark the round flat surface in the center as shown.

Using a 3/16" drill bit, drill a hole through the center entering from the long end to ensure the hole is in the center.



STEP 27 | Reinstall the blade mount onto the motor same as factory, and using the M5 long bolt the mount onto the motor mount.





STEP 28 | With the bolt inserted, press on the backside to score the housing and using the 3/16": drill bit, carefully drill through to allow the bolt to be through bolted.



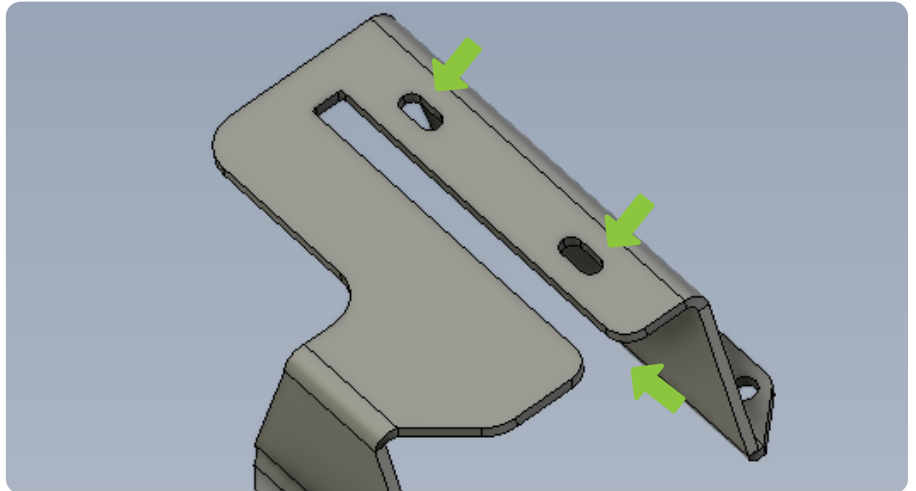
INSTALLATION MANUAL

STEP 29 | Using a 2.5mm allen and 7mm socket/wrench, secure the bolt into place.



STEP 30 | Slide the air dam motor into skid plate bracket, secure the air dam motor using the provided M6 hardware.

Do not install bracket onto skid plate until AFTER bumper is installed on truck.



INSTALLATION MANUAL

STEP 31 | Place bumper in a safe spot to prevent damage to the coating or bumper.



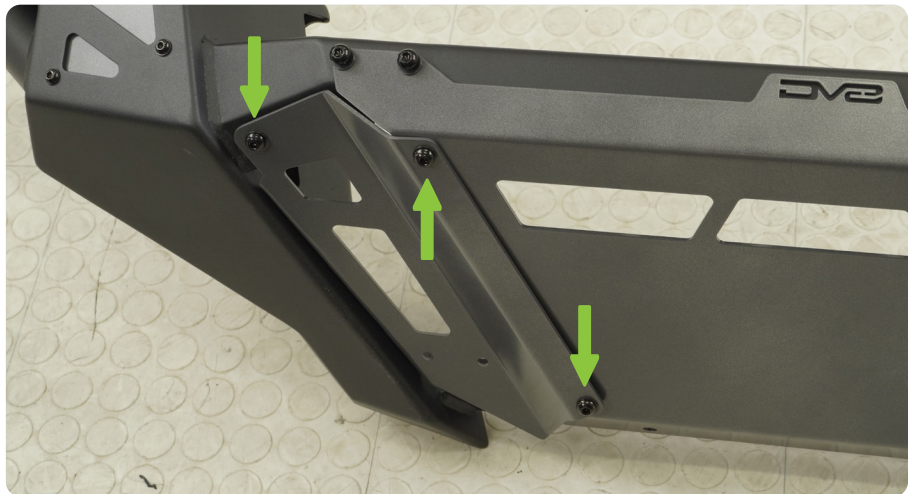
STEP 32 | Start by placing the center cover and loosely install (4) M8x20 bolt, washer to the bumper.

Note: Remember to leave all bolts and nuts loose enough to be able to move around the plates, and to be able to align them when all the pieces are put together.



INSTALLATION MANUAL

STEP 33 | Loosely install the side plate on the skid plate with (3) M8x20 bolt, washer, and nut.



STEP 34 | Repeat process to the other side.



INSTALLATION MANUAL

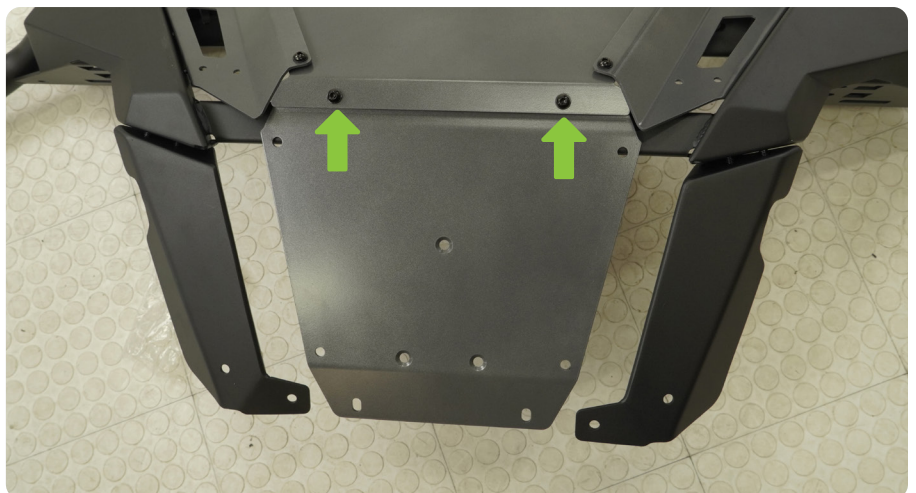
STEP 35 | Loosely install the (4) M8x20mm bolts on the back of the bumper using socket and wrench.



STEP 36 | Install lower portion of the skid plate using (4) M10x25 hex bolt, washer, and nut.

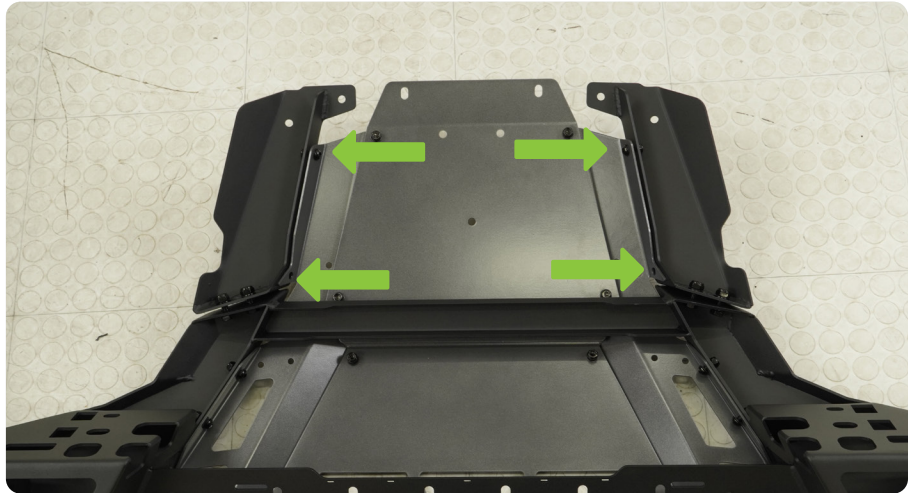
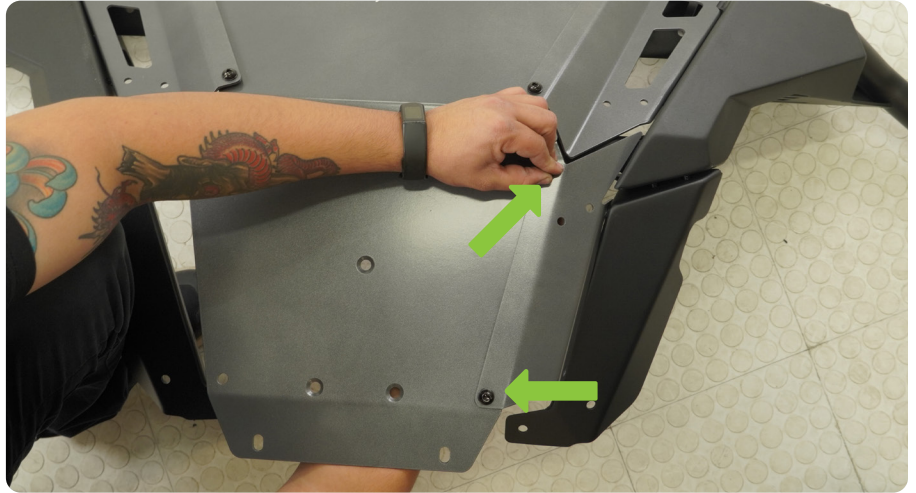


STEP 37 | Install the lower gray skid plate with (2) M8x20 bolt, washer, and nut.

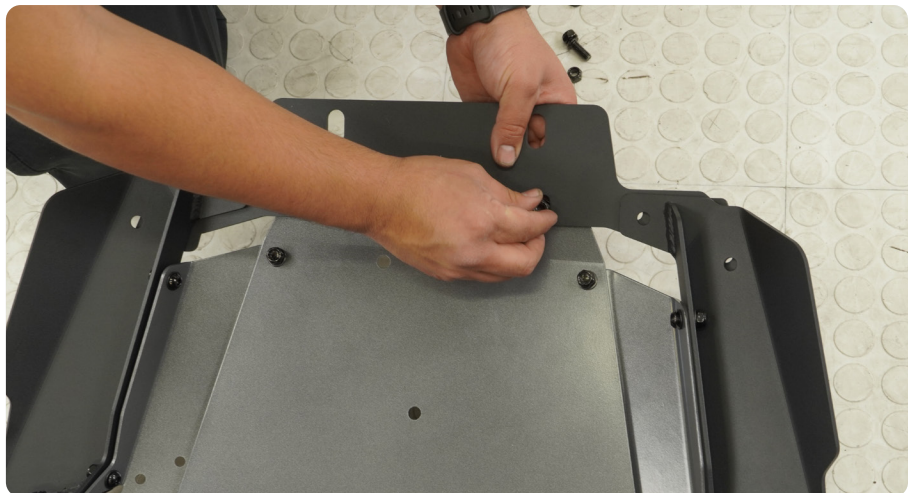


INSTALLATION MANUAL

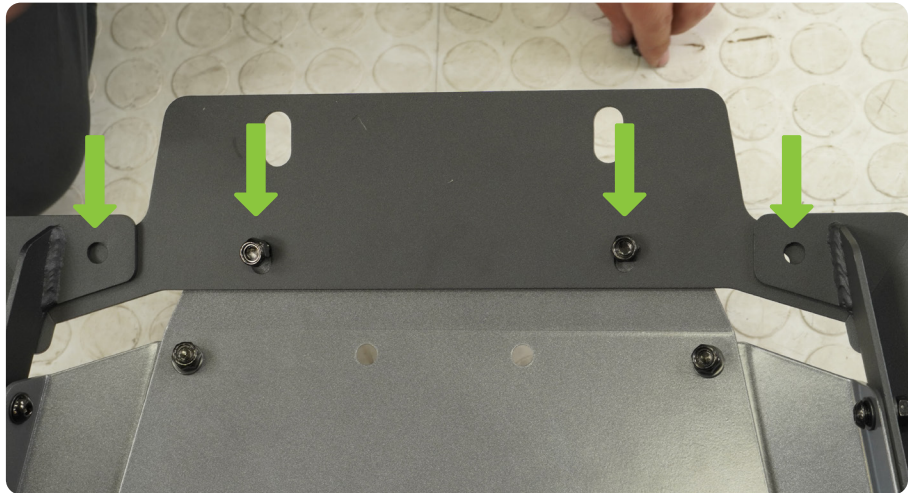
STEP 38 | Install the side gray panels on skid plate using (2) M8x20 bolt washer, and nut on gray plate and (2) M8x20 bolt, washer, and nut on to the side skid plate.



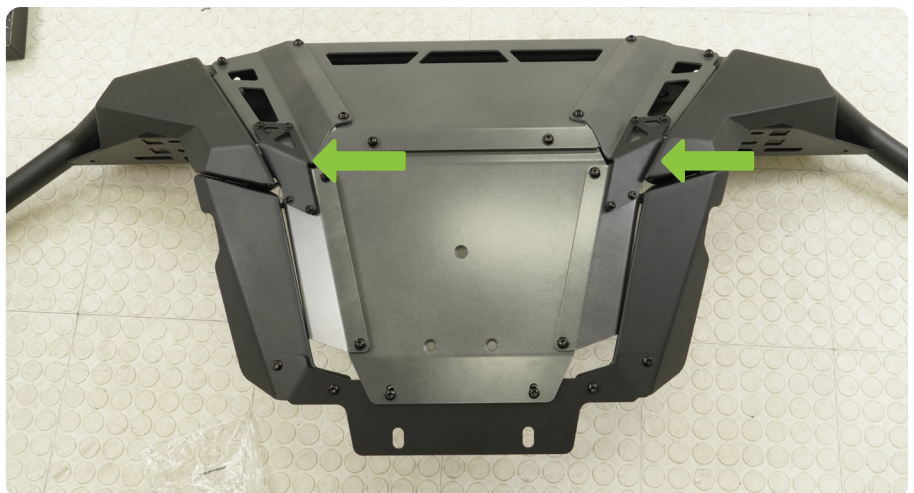
STEP 39 | Install bottom portion of the skid plate using (4) M8x20 bolt, washer and nut.



INSTALLATION MANUAL

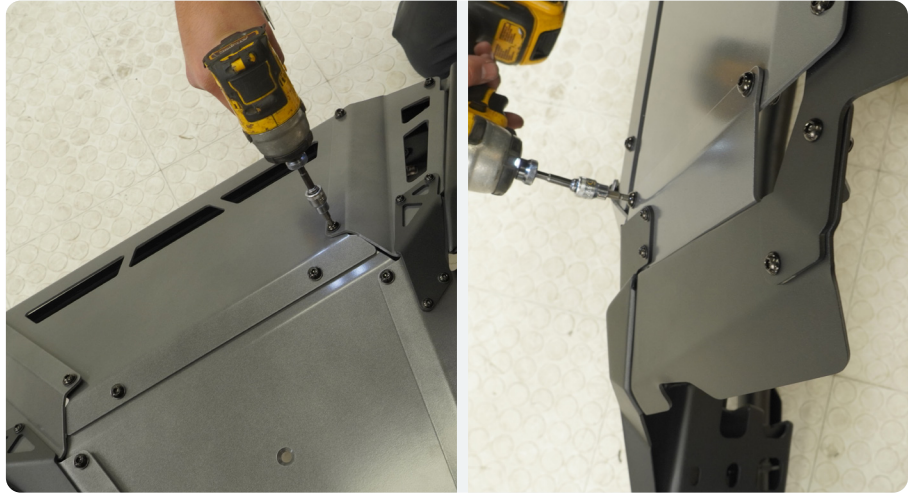


STEP 40 | Install black side bracket on both sides using (4) M6x20 bolt, washer, and nut on each side.



INSTALLATION MANUAL

STEP 41 | Once all parts are installed, go ahead and start securing your bolts, start from the top down, while making sure everything is align correctly.



STEP 42 | Optional: Install push bar using (6) M6 bolt and washer.



INSTALLATION MANUAL

STEP 43 | Once all the items are secured, lights can be installed on the bumper



STEP 44 | On here we are installing our 3" DV8 Elite Series LED Pod light (BE3EW40W).



STEP 45 | We are installing our 20" Elite Series LED light bar (BE20EW200W). Use either bracket assembly, light bar comes with a bracket or the provided brackets on your bumper.



INSTALLATION MANUAL

STEP 46 | Place light bar at your desired location.



STEP 47 | Secure the light bar using the provided hardware, (4) M6x20 bolts, washer, and nut.



STEP 48 | Install provided clip nuts to the bumper.



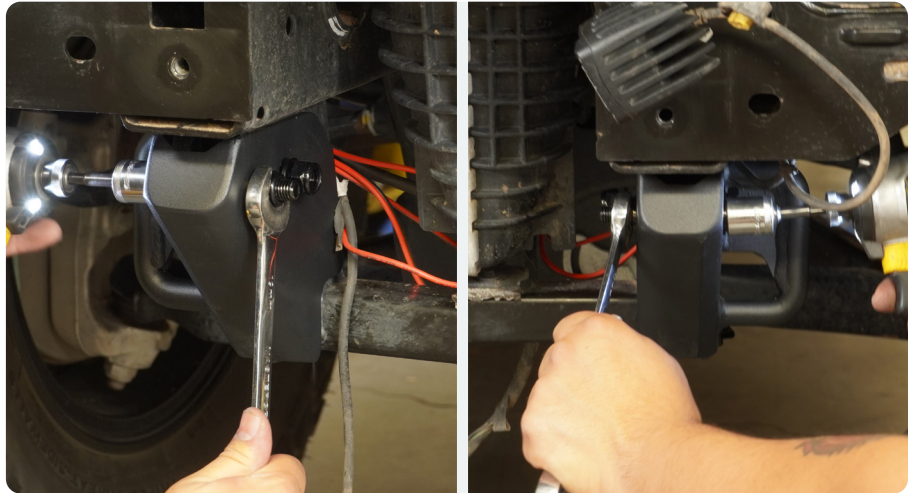
INSTALLATION MANUAL

STEP 49 | Install recover hooks using (2) M12x80 bolt, washer, and nut.

Note: These will fit snug into frame, you may have to use a mallet to tap it into place.



STEP 50 | Secure your recovery hooks.



STEP 51 | Install your mounting plates with OE bumper hardware.



INSTALLATION MANUAL

STEP 52 | Secure mounting plate making sure it is aligned properly



STEP 53 | Install your bumper using (2) M10 hex bolt and washer on the backside, (1) M10 Hex bolt, washer, and nut for the front one

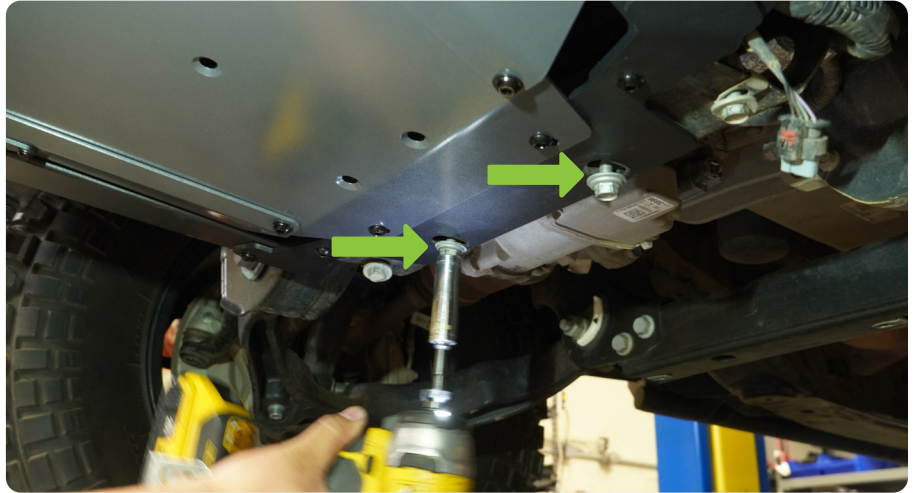
Note: We highly recommend having help to lift and install bumper to vehicle to avoid injury and damage to the vehicle/bumper.



INSTALLATION MANUAL

STEP 54 | Do not fully secure your bolts until bumper alignment is to your liking.

Install and secure the (2) bottom bolts with OE skid plat bolts.



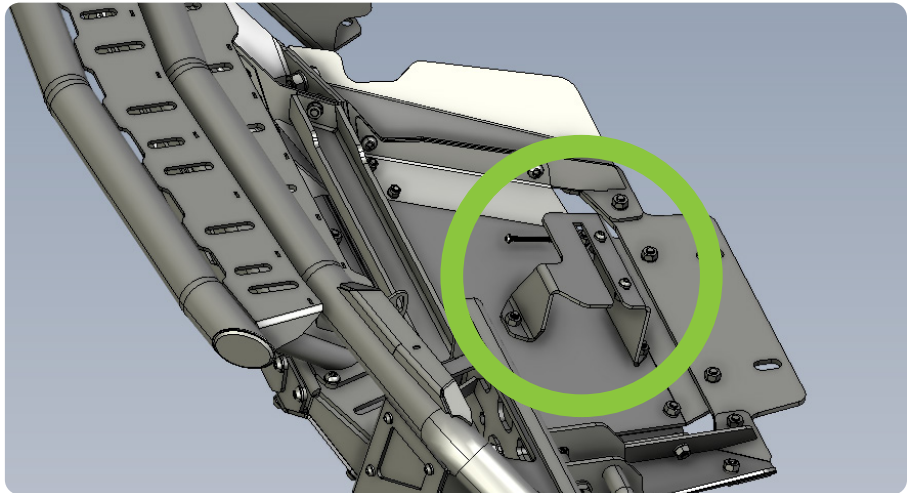
STEP 55 | Align and fully secure your bolts. Making sure your bumper is align to your liking.



INSTALLATION MANUAL

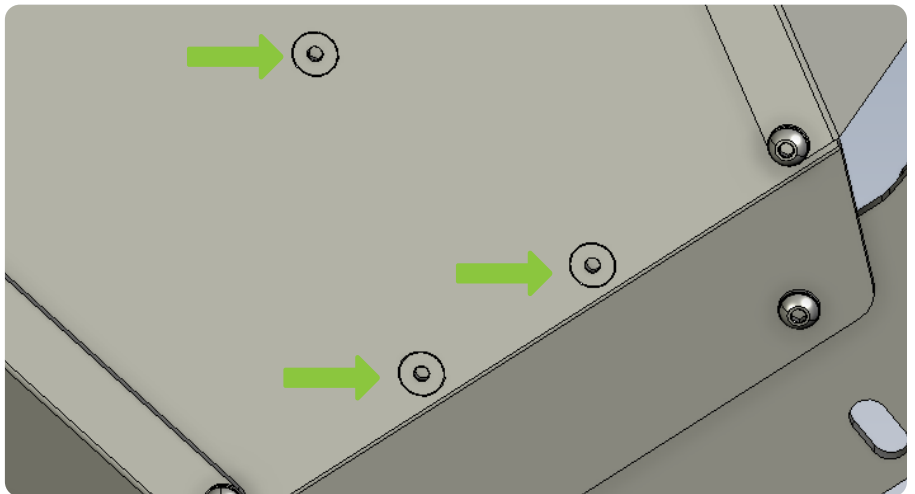
STEP 56 | Once bumper is installed, take your shutter motor assembly and place into on the inside of your skid plate.

This make some twisting and turning to get it into place.



STEP 57 | Using the provided countersunk bolts and #4 allen head, secure the motor to the inside of the skid plate.

Plug wire back into shutter motor.



STEP 58 | Congratulations! You have finished the install of your 23+ Chevy Colorado ZR2 Front Tube bumper.

