

*FREE SHIPPING ON ORDERS OVER \$98 (EXCLUSIONS APPLY)



SHOP CATEGORIES

WHY S&B

SHOP BY VEHICLE



0

INSTALL INSTRUCTIONS FOR 75-5187



PRINT

BEFORE YOU START

Please read the entire product guide before proceeding.

Ensure all parts are present.

If you are missing any of the components, call our customer support at (909) 947-0015.

Do not work on your vehicle while the engine is hot. Make sure the engine is turned off and the vehicle is in Park and the Parking Brake is set.

S&B FILTERS recommends that you keep your OE intake system in the event it is required in the future.

In order to maintain your warranty, all connections and components must be checked periodically for alignment and for proper tension on all connections. Failure to do so may void your warranty.

Use only S&B FILTERS cleaning and oil products to service your filter. Using any other brand oil and or cleaners on your S&B air filter may void your warranty

REQUIRED TOOLS

Ratchet/Wrench, 8mm & 10mm Socket, Panel Popper, Crescent Wrench, Phillips Screwdriver and Scissors

Note: Approximate Install Time: 1 Hr 00 Mins.

PERIODICALLY (DURING EACH ENGINE OIL CHANGE) CHECK THE FOLLOWING

- Intake Tubes and Filter connections and Intake Box fasteners making sure they are tight.
- All electrical connections and wire harnesses moved during the installation of the intake and make moving components.

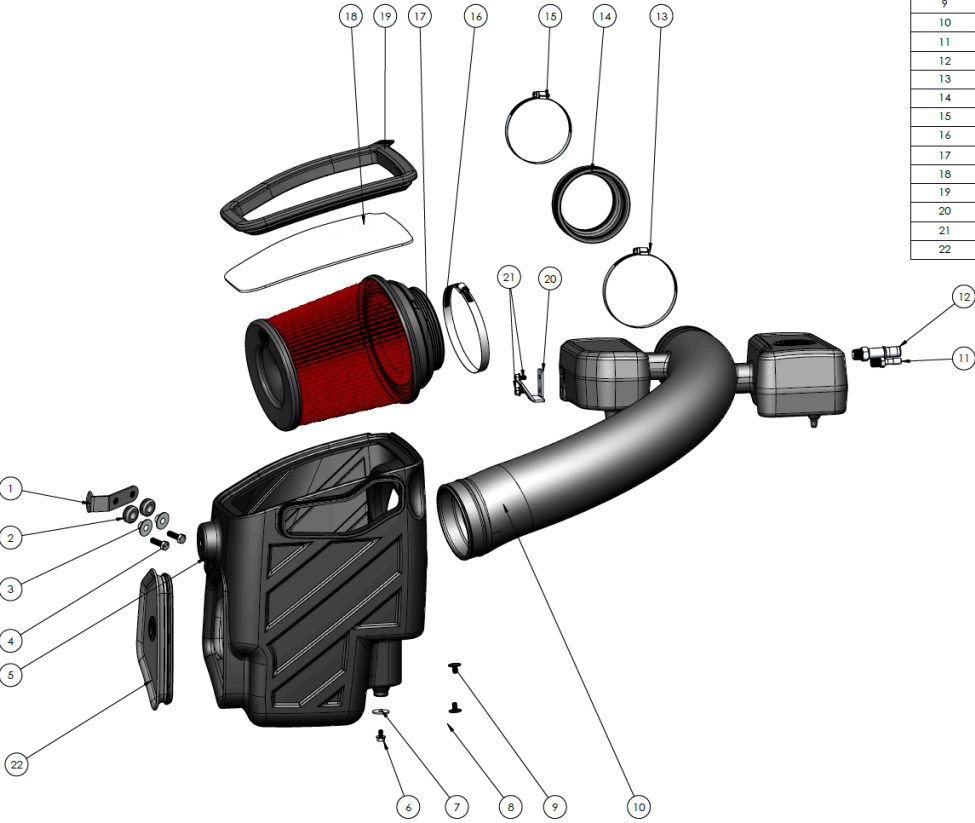


Hi. Need any help?



- Check for any signs of abrasion or wear and tear on the intake tube, box, filter, and electrical harnesses moved or near the intake and repair/replace as necessary.

ITEM NO.	PART NUMBER	DESCRIPTION	QTY.
1	AI2475-00	Bracket, Powder Coated Black	1
2	AI1563-00	Grommet, 1/2" ID x 1-1/16" OD, 7/16" Thk, 3/16" Panel	2
3	AI2294-00	Machined Shoulder Washer	2
4	AI1214-00	Screw, Cap Hex Head, M8x1.25mm, 25mm Long	2
5	AL1373B-00	Airbox	1
6	AI2452-00	Hex Flange Bolt, Steel, Zinc Pltd, Class 8.8, DR#6921, M6x1x10mm	1
7	AI2453-00	Washer, Flat, 1/4" x 1.00" OD, Steel, Zinc Pltd.	1
8	AI1956C-00	Silicone Inlet, Box	1
9	AI1762-00	Plastic Rivet	2
10	AI1443-00	Intake Tube	1
11	AI2964-00	5/16" Barbed to 1/4" NPT	1
12	AI1701-00	Quick Connect, 5/8 Dia x 3/8 NPT	1
13	AG1018-00(64)	Hose Clamp #64	1
14	AI1465C-00	Step Coupler, 4.1" x 3.54" 2.28" Long	1
15	AG1019-00	Hose Clamp #56	1
16	AG1010-00	Hose Clamp #80	1
17	KF-1079	Air Filter	1
18	AI2478-00	Clear Lid	1
19	AI2465C-00	Snap In Seal, Silicone	1
20	AI2966-00	Mounting Bracket, Scoop, 75-5161	1
21	AI2452-00-1	Hex Flange Bolt M6x1 10mm Long.	2
22	AI2464C-00	Plug, Air Box	1



STEP 1

With the ignition switched off,
make sure the vehicle is in Park

Cookie Preferences

Make sure the engine has cooled down.

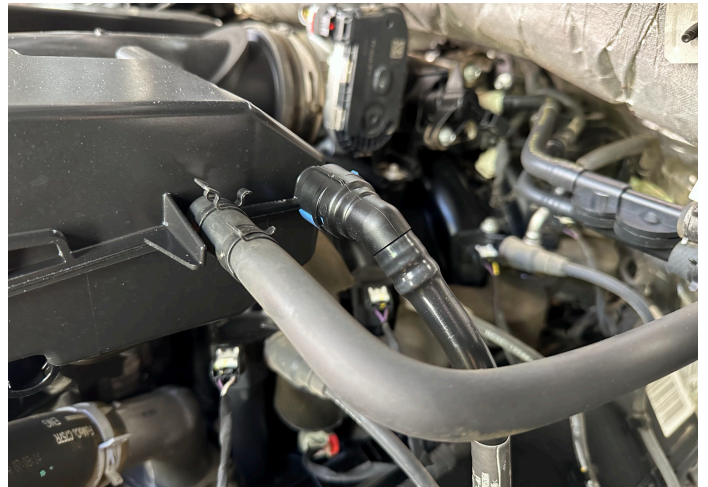
STEP 2

Loosen all three hose clamps that are on the stock intake.



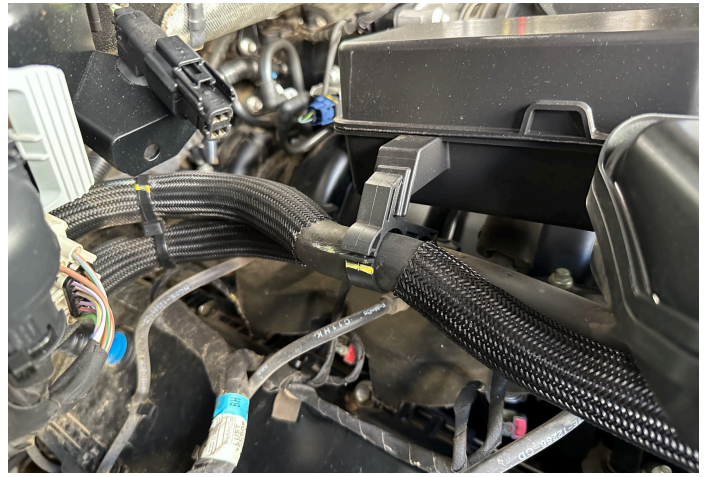
STEP 3

Disconnect the crankcase hose and the vacuum line from the stock intake.



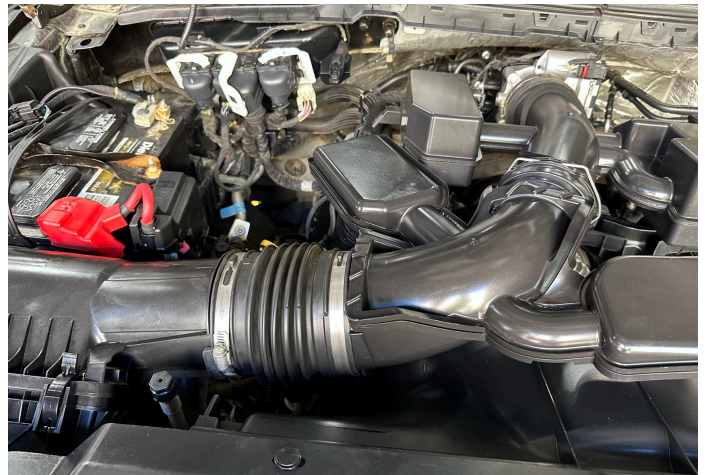
STEP 4

Disconnect both hoses off of the resonator.



STEP 5

Remove the stock intake tube by disconnecting the tube side from the air box. Then you will pop up the resonators from the grommets



STEP 6

Remove the push rivet that's securing the front scoop of the air box.

STEP 7

To make it easier to remove the airbox from the vehicle, first take off the lid, remove the air filter, remove the scoop, and then pull the box out of the grommets.

STEP 8

Install the washer and screw onto the bottom of the S&B airbox and tighten down.

STEP 9

Install the front inlet to the S&B airbox then secure it down using the provided rivets.

STEP 10

Decide if you want to install the optional S&B silicone box plug.

STEP 11

Install the two grommets and then install shoulder washers from inside the airbox.

STEP 11B

STEP 12

Remove the two bolts holding down the bracket, then you can remove the bracket from the vehicle. Make sure to save both bolts because you will use them later.

STEP 13

Install the S&B bracket using the provided hardware. Don't fully tighten down yet.

STEP 14

Install the S&B Airbox into the vehicle. Then secure it down using the bolts you removed earlier.

STEP 15

For the bracket that you loosely installed earlier, using the S&B-provided hardware, secure it to the airbox through the inside of the shoulder washer.

STEP 16

Install the push rivet into the front of the inlet.

STEP 17

Install the fittings onto the S&B intake tube. Hand tighten to get them worked in, then take a wrench and make one turn. Don't tighten all the way down.

STEP 18

Install the bracket onto the S&B intake tube using the provided hardware.

STEP 19

Install the air filter into the S&B airbox.

STEP 20

Install both clamps onto the coupler then install the coupler onto the throttle body.

STEP 21

Install the clamp onto the air filter.

STEP 22

Install the S&B intake tube.

STEP 23

Go back and tighten down all the hose clamps.

STEP 24A

Reconnect the crankcase hose and the vacuum line.

STEP 24B

Reconnect the hoses.

STEP 25A

Remove the protective layer from both sides of the S&B lid and install it into the lid seal.

STEP 25B

STEP 26

Install the snap-in lid onto the S&B airbox.

STEP 27

Inspect your installation, make sure the kit is properly positioned and all fasteners and hose clamps are secured. Keep all stock parts in case you would ever need to reinstall the stock intake assembly. If you are an installer, give the owner the QR code for the Installation Instructions so that he/she is aware of the "Periodically Check the Following" procedures given in the beginning of the Instructions. The Installation is now complete.

Cookie Preferences