



INSTALL INSTRUCTIONS FOR 75-5126

[PRINT](#)

BEFORE YOU START

Attention for 2021+ 3.0L Powerstroke:

For 2021+ 3.0L Powerstroke, make sure your kit contains MAF Extension Harness (QQ), Part number AI2761-00, prior to beginning installation. Please give us a call at 909-947-0015 if you need this MAF Extension Harness.

REQUIRED TOOLS

- R10 & 13mm Socket or Wrench
- Flat Blade Screwdriver
- Philips Screwdriver
- T20 Torx
- Utility Knife
- 5/16" Nut Driver (optional)
- Panel Popper (optional)
- Flush Diagonal Cutter (optional)

Kit may not fit with the following Aftermarket Parts installed:

Body Lift or Lowering Kit

Custom Hood

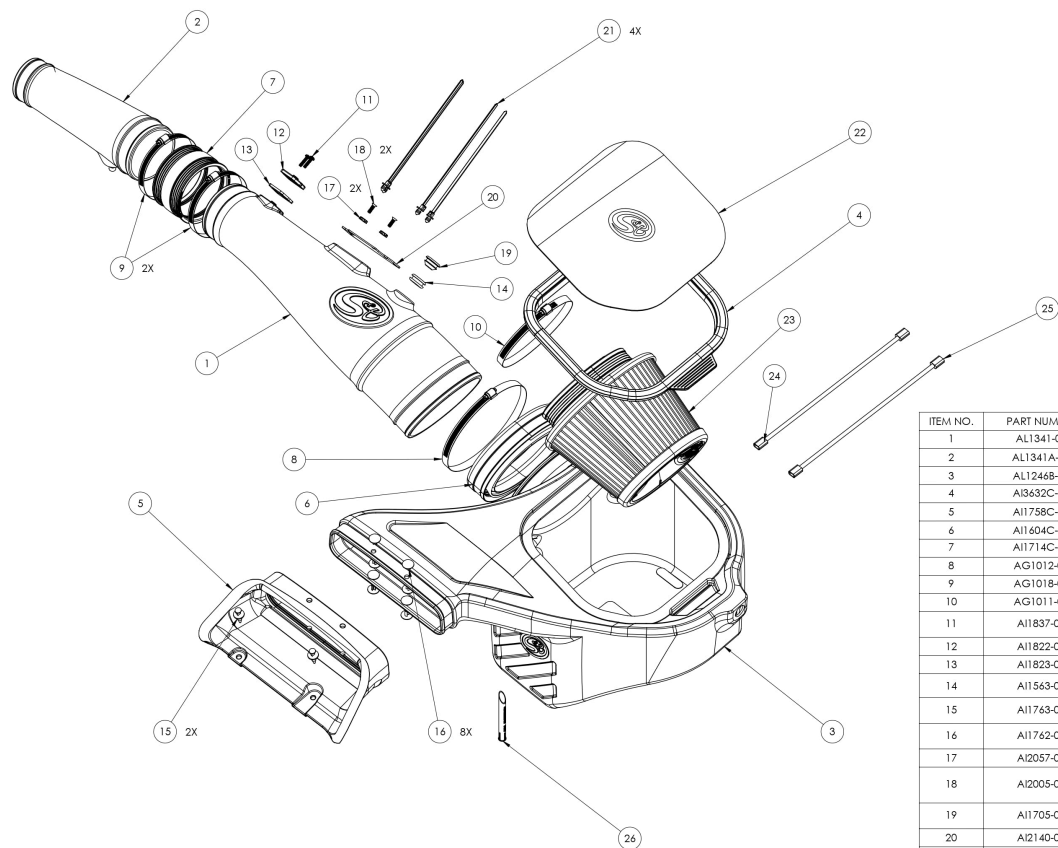
Aftermarket Turbocharger

- Please read the entire product guide before proceeding.
- Ensure all parts are present.
- If you are missing any of the components, call our customer support at (909) 947-0015.
- Do not work on your vehicle while the engine is hot.
- Make sure the engine is turned off and the vehicle is in Park or the Parking Brake is set.



Hi. Need any help?





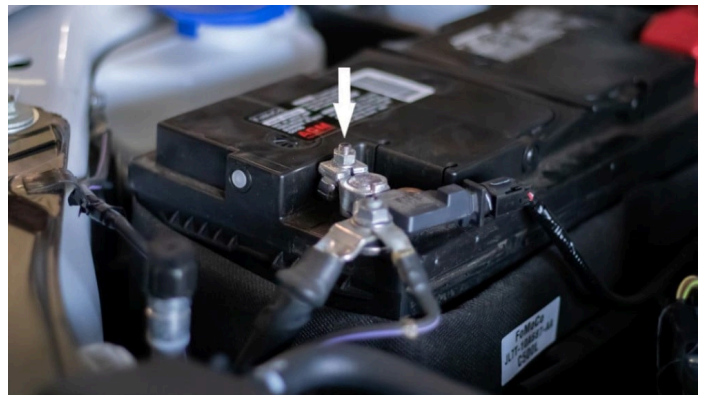
ITEM NO.	PART NUMBER	DESCRIPTION	QTY.
1	AL1341-00	Large Intake Tube	1
2	AL1341A-00	Small Intake Tube	1
3	AL1246B-03	Air Box	1
4	AI3632C-00	Snap-In Lid	1
5	AI1758C-00	Front Inlet	1
6	AI1604C-01	Rubber Cuff	1
7	AI1714C-00	Coupler, Silicone, 3.875 x 2.50 Long	1
8	AG1012-00	Hose Clamp, #104	1
9	AG1018-00	Hose Clamp, #64	2
10	AG1011-00	Hose Clamp, #88	1
11	AI1837-00	Screw, SEMS, Pan Head, Phillips, #8-32 X 3/4, SS	2
12	AI1822-00	MAF Mount, Black	1
13	AI1823-00	Gasket, for MAF mount - AI1822-00	1
14	AI1563-00	Grommet, 1/2" ID x 1-1/16" OD, 7/16" Thk, 3/16" Panel	1
15	AI1763-00	Plastic Rivet, 11/16 dia head, 1/4 dia x 7/8 long stem	2
16	AI1762-00	Rivet, Interlocking Shank, 1/4" dia x .50-.81" Grip, Blk Nylon	8
17	AI2057-00	#10 COUNTERSUNK WASHER	2
18	AI2005-00	Phillips Flat Head Screw, 10-24 Thread Size, 5/8" Long, SS, Black OX, w/ Vibralite	2
19	AI1705-00	Grommet / Plug, Closed End, for 3/4" Hole, 1.063" OD	1
20	AI2140-00	Harness Bracket	1
21	AI2154-00	Push In Mount Cable Tie	4
22	AI3633-00	Clear Lid	1
23	KF-1058	Filter	1
24	AI1481-00	MAF Sensor Extension Harness 18" Long	2
25	AI2761-00	Maf Extension Harness	1
26	AI2355-00	CCV Insert	1

STEP 1

Disconnect the negative battery cable by loosening the terminal clamp and removing it from the battery post.

IMPORTANT: Failure to disconnect the battery for a

Cookie Preferences of 2 hours may cause the Check Engine Light to illuminate upon completion of the installation or subsequent operation. DO NOT SKIP THIS STEP!



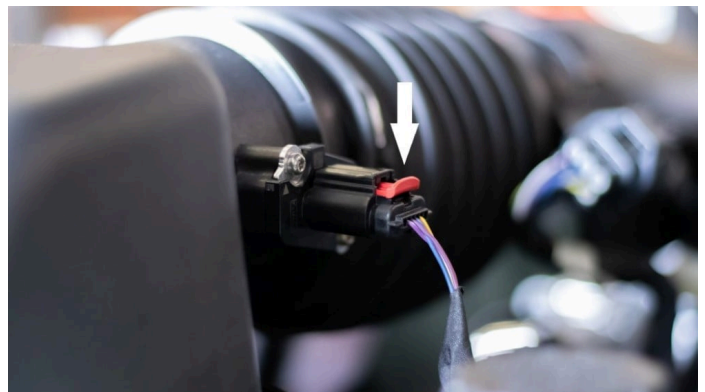
STEP 2

Loosen the hose clamp connecting the intake tube to the stock airbox, then pull the intake tube off of the airbox.



STEP 3

Disconnect the MAF sensor wire harness. First, pull the red locking tab out, press down on the plug retaining a tab to release it, then pull the plug apart.



[Cookie Preferences](#)

STEP 4

Unlatch the two latches holding the stock airbox lid onto the stock airbox.

STEP 5

Lift and remove the stock airbox lid and air filter from the vehicle.

STEP 6

Remove the single retaining bolt attaching the stock

[Cookie Preferences](#)

he fender. Set the bolt aside, it will be reused in Step 28.

STEP 7

Remove the metal bushing from the stock airbox pulling it from the inside. Set the metal bushing aside, it will be reused in Step 17.

STEP 8

Remove the grommet from the stock airbox by pulling up. Set the grommet aside, it will be reused in Step 16.

STEP 9

Disconnect any harness clips attached to the stock airbox.

STEP 10

Remove the plastic rivets on the stock air scoop using a flat head screwdriver. First, pop the center up to unlock the rivet, then remove the complete rivet.

[Cookie Preferences](#)

STEP 11

Lift and remove the stock airbox from the vehicle.

STEP 12

Completely loosen the hose clamp connecting the stock intake tube to the turbo inlet tube.

STEP 13

Remove the wire harness strap from the stock intake tube by unclipping the strap.

STEP 14

Remove the harness plug and wire clips from the harness strap. Pry the plug retaining tab up to release it, then slide the plug off of the harness strap.

STEP 15

Remove the stock intake tube from the vehicle.

STEP 16

Install the grommet removed
in Step 8 into the S&B airbox
(A)

STEP 17

Install the metal bushing
removed in Step 7 into the
grommet by pressing it in
from inside the airbox.

STEP 18

Install the Rubber Cuff (E) and Hose Clamp (M) onto the side of the S&B airbox. Make sure that the rubber pull tab on the Cuff is on the bottom. Tighten the hose clamp just enough to hold the Cuff in place.

STEP 19

Install the Front Inlet (I) onto the S&B airbox. Use 2 of the supplied Plastic Rivets (J) on each hole, pinching them together tightly to lock them in place.

STEP 20

[Cookie Preferences](#)

the MAF sensor retaining screws and the MAF sensor from the stock airbox lid.

STEP 21

Install the MAF sensor onto the Large Intake Tube (**B**), using the provided MAF Mount (**R**), MAF Gasket (**S**), and Screws (**T**).

STEP 22

Install the Coupler (**D**) and 2 Hose Clamps (**N**) onto the Large Intake Tube. Do not tighten the Hose Clamps.

STEP 23

Install the Wire Harness Bracket (**U**) onto the Large Intake Tube, using the Screws (**X**) and Washers (**W**).

STEP 24

Install the Push-In Cable Ties (**V**) into the 4 holes in the bracket.

STEP 25

S&B recommends regular visual inspections of your new filter to best assess the status of the filter. If you choose not to use the stock Filter Minder, install the supplied Plug (○).

STEP 26

If you choose to use the stock Filter Minder install the Grommet (P) then install the Filter Minder. Remember to inspect your filter on a regular basis to ensure it is properly maintained.

STEP 27

Install the S&B airbox by aligning the box prongs with the factory grommets and pushing the airbox down firmly to ensure that the prongs are completely seated in the grommets.

STEP 28

Reinstall the retaining bolt removed in Step 6, tighten it securing the S&B airbox to the inner fender.

STEP 29

Place the Air Filter (F) with Hose Clamp (L) inside the S&B airbox. Turn the filter sideways, squeeze the silicone flange slightly, and slide it into the airbox. Be careful not to damage the filter pleats on the lid mounting tabs.

STEP 30

Feed the Large Intake Tube through the Rubber Cuff on the S&B airbox.

STEP 31

[Cookie Preferences](#)

Air Filter over the Large Intake Tube until the tube bottoms out on the step on the inside of the filter flange, then tighten the Hose Clamp.

STEP 32

Install the larger end of the Small Intake Tube (C) into the Coupler on the Large Intake Tube.

STEP 33

Install the smaller end of the Small Intake Tube into the coupler on the stock turbo inlet tube. Adjust the tube so the prong rests in factory grommet and tighten the hose clamp.

STEP 34

Press the Large Intake Tube firmly against the airbox Cuff and tighten the 2 hose clamps on the coupler connecting the 2 intake tubes.

STEP 35

Insert the harness clips removed in Step 9 into the holes on the side of the S&B airbox.

STEP 36

Connect the MAF Extension Harness (Q) or (AA) between the stock MAF harness and the MAF sensor. Connect only (1) MAF Extension harness and use the one that fits your particular MAF sensor.

STEP 37

Use the Push-In Cable Ties to secure the MAF Extension Harness and the harness wires that were removed from the wire harness strap. Keep the wires away from any hot surfaces that could damage them.

STEP 38

Secure the Front Inlet to the vehicle by inserting the Plastic Rivets (K) into the holes and firmly pushing down on the rivet center pin until it locks in the down position. Pull up on the Front Inlet to confirm it is securely attached.

STOP! READ THIS BEFORE CONTINUING THE INSTALL

If your kit came with our new snap-in lid design, please proceed to **STEP 42** to install your snap-in lid. If your lid is the traditional screw in lid, please proceed to the next step.

STEP 39

Remove the protective covering from the Clear Lid (G) and S&B Logo.

STEP 40

Install the Lid Seal (H) on the Clear Lid.

STEP 41

Install the Clear Lid on top of the S&B Airbox and secure the lid using the six Screws (Z) and Washers (Y). Do not over tighten.

[Cookie Preferences](#)

STEP 42

For Snap-In Lids Only

Remove the protective covering from the Clear Lid.

STEP 43

For Snap-In Lids Only

Stretch silicone lid seal around the perimeter of the clear lid. It should be a snug fit.

STEP 44

For Snap-In Lids Only

[Cookie Preferences](#) on the lid and the
tab of the lid seal should
mate in the same corner.

STEP 45

Reconnect the negative
terminal on the battery and
tighten it.

STEP 46

Inspect your installation,
make sure the kit is properly
positioned and all fasteners
are secure. The installation is
now complete.

Cookie Preferences