



# INSTALL INSTRUCTIONS FOR 75-5123-1

[PRINT](#)

## BEFORE YOU START

This intake kit may not fit with the following Aftermarket Parts installed:

Body Lift or Lowering Kit

Custom Hood

Throttle Body Spacer / Upgrade

## REQUIRED TOOLS

- 10mm, 13mm Wrench & Socket
- 5/16" Nut Driver & 1/4" Nut Driver or Flat Blade Screwdriver
- Phillips Screwdriver, Pliers or Channel Locks

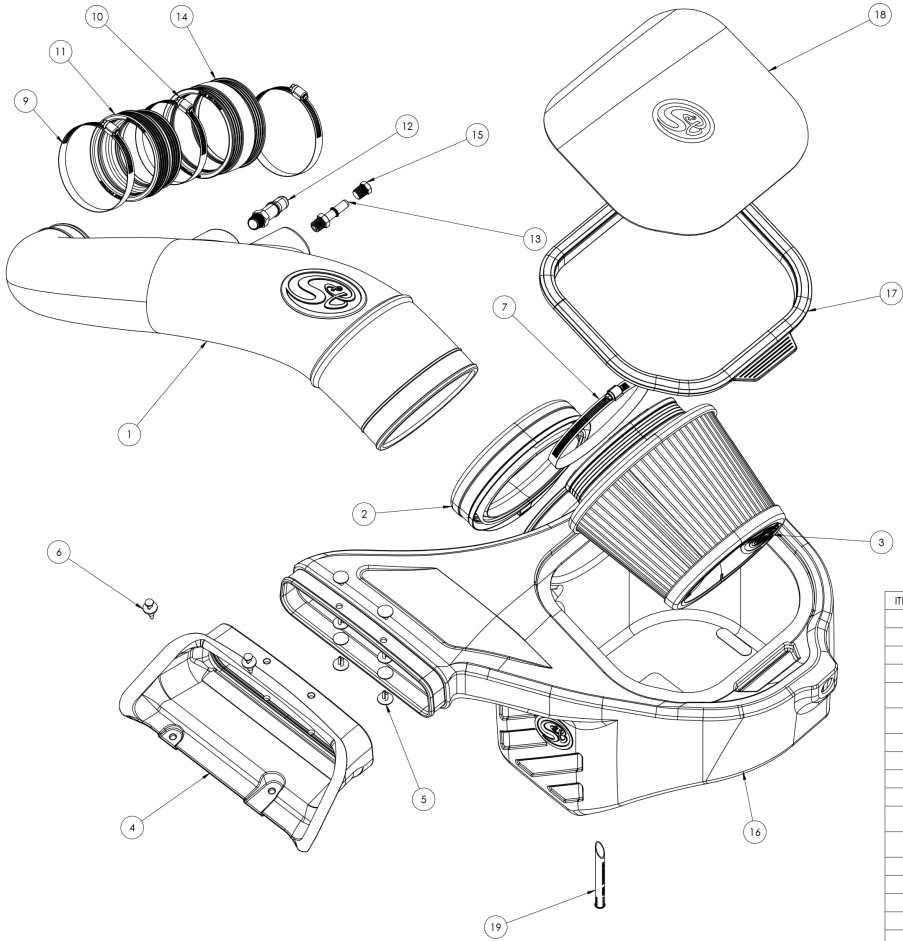
- Please read the entire product guide before proceeding.
- Ensure all parts are present.
- If you are missing any of the components, call our customer support at (909) 947-0015.
- Do not work on your vehicle while the engine is hot.
- Make sure the engine is turned off and the vehicle is in Park or the Parking Brake is set.



Hi. Need any help?



Cookie Preferences



ITEM NO.	PART NUMBER	DESCRIPTION	QTY.
1	AL1256-00	Intake Tube	1
2	AI1604C-01	Rubber Cuff	1
3	KF-1058	Filter	1
4	AI1758C-00	Front Inlet	1
5	AI1762-00	Rivet, Interlocking Shank, 1/4" dia x .50-.81" Grip, Blk Nylon	8
6	AI1763-00	Plastic Rivet, 1 1/16 dia head, 1/4 dia x 7/8 long stem	2
7	AG1011-00	Hose Clamp, #88	1
8	AG1012-00	Hose Clamp, #104	1
9	AG1008-00	Hose Clamp, #60	2
10	AG1019-00	Hose Clamp, #56	1
11	AI1581C-00	Silicone Step Coupler, 3.75 X 3.375 X 2.00 Long	1
12	AI1701-01	Fitting, Quick Connect to 3/8"NPT, Inj, Molded, Black	1
13	AI1776-01	Quick Connect, 3/8 Dia x 1/4 NPT	1
14	AI1714C-00	Coupler, Silicone, 3.875 x 2.50 Long	1
15	AI2587-00	Plug, Hex, 1/4" NPT	1
16	AL1246B-03	Air Box	1
17	AI3632C-00	Snap-In Lid	1
18	AI3633-00	Clear lid	1
19	AI2355-00	CCV Insert	1

STEP 1

With the ignition switched off and the parking brake set, disconnect the negative battery cable on the battery.

IMPORTANT: Failure to disconnect the battery for a minimum of 2 hours may

[Cookie Preferences](#)

Check Engine Light  
to illuminate upon completion  
of the installation or  
subsequent operation. **DO  
NOT SKIP THIS STEP!**



## STEP 2

Loosen the hose clamp by the  
stock airbox and pull the tube  
out.



[Cookie Preferences](#)

## STEP 3

Unlatch the two latches on the stock airbox.

## STEP 4

Lift and remove both the lid and air filter.

## STEP 5 (2018-2020 MODEL YEARS ONLY)

Disconnect the vacuum line. Push down on the black clip and pull the hose connector out of the hose barb.

## STEP 6

Pull on the lever to remove the PCV hose from the hose barb.

## STEP 7

Remove the retaining bolt on the stock airbox using a 13mm socket.

**Note:** The retaining bolt will be reused again in Step 18. Disconnect any harness clips attached to the stock airbox.

Cookie Preferences [el popper or flat](#)  
[blade screwdriver.](#)

## STEP 7 (IMAGE 2)

## STEP 8

Remove the plastic rivets on the stock air scoop using a flat head screwdriver

[Cookie Preferences](#)

## STEP 9

Lift and remove the stock airbox.

## STEP 10

Loosen the hose clamp at the throttle body.

## STEP 11

Remove the stock air tube.

## STEP 12

Remove the grommet and metal bushing from the stock airbox. Removing the metal bushing first will help make removing the grommet easier.

## STEP 13

Install the grommet into airbox (A) first and then install the metal bushing from the inside.

## STEP 14

Install the Rubber Cuff (C) and Hose Clamp #104 (K) onto the side of the airbox



Cookie Preferences sure that the rubber pull tab on the tube seal is on the bottom. Tighten the hose clamp.

## STEP 15

Install the Front Inlet (G). Use the supplied Plastic Rivet (H) to secure the front inlet to the airbox (A). Use two plastic rivets on each hole and pinch them together to lock them in place.

## STEP 16A (2018-2020 MODEL YEARS ONLY)

Install the two Quick Connect Fittings (Q & R) on to Intake Tube (B) until hand tight then use a crescent wrench and

Cookie Preferences another one to two complete turns.

**IMPORTANT:** Do not over tighten, as the Quick Connect Fittings can break or the threaded inserts may strip!

## STEP 16B (2021 MODEL YEAR)

Install the 3/8" quick disconnect fitting in the threaded insert for the PCV line. Install the 1/4" npt aluminum plug into the other insert to block of the port.

## STEP 17

Install the airbox (A). Make sure that the box prongs are aligned with the factory grommets. Push down on the airbox to make sure that the

Cookie Preferences completely  
seated.

## STEP 17 (IMAGE 2)

## STEP 18

Reinstall the retaining bolt removed in Step 7 and tighten the bolt to secure the Air Box (A). Install the retaining bolt from inside the airbox.

## STEP 19

Install the silicone coupler and two hose clamps on to the throttle body. For 2018-2020 model years use the step coupler (N) and hose clamps #60 and #56 (O and P). For 2021 models use the straight coupler (S) and two #60 hose clamps.

## STEP 20

Place the Air Filter (D) and Hose Clamp #88 (J) inside the airbox (A). Turn the filter sideways and slide it into the airbox.

## STEP 21

Feed the Air Intake Tube (B) underneath the coolant line through the Rubber Cuff (C) until the bead on the air intake tube meets up to the rubber cuff. Slide the Air Filter (D) over the tube until the tube bottoms out on the filter flange step.

[Cookie Preferences](#)

## STEP 21 (IMAGE 2)

## STEP 21 (IMAGE 3)

## STEP 22

Tighten the Hose Clamp #88  
(J) at the Air Filter (D).

## STEP 23

Insert the Intake Tube into the Silicone coupler at the throttle body and tighten the hose clamps.

## STEP 24A (2018-2020 MODEL YEARS ONLY)

Reconnect the vacuum line. Push in the connector over the Quick Connect Fitting (R) until hand tight then use a crescent wrench and tighten it another one to two complete turns.

**IMPORTANT:** Do not over tighten, as the Quick Connect Fittings can break or the threaded inserts may strip

## STEP 24B

Reconnect the PCV hose.  
Push in the connector over  
the Quick Connect Fitting (Q)  
until you hear it snap into  
place.

## STEP 25

Insert the two wire clips  
disconnected in Step 7  
(image 2) into the holes on  
the side of the Air Box (A).  
Use zip ties to secure any  
loose wires or harnesses away  
from any hot surfaces and/or  
moving components that may  
cause damage.

## STEP 26



[Cookie Preferences](#) Front Inlet (G).

Firmly push down on the center pin of the Plastic Rivet (I) until it locks into the closed position.

## **STOP! READ THIS BEFORE CONTINUING THE INSTALL**

If your kit came with our new snap-in lid design, please proceed to **STEP 30** to install your snap-in lid. If your lid is the traditional screw in lid, please proceed to the next step.

## **STEP 27**

Remove the protective covering from the Clear Lid (E).

## STEP 28

Install the Lid Seal (F) around the Clear Lid (E).

## STEP 29

Install the Clear Lid (E) on top of the airbox (A) and secure the lid using the six provided Truss Head Phillips Screw (M) and Sealing Washer (L). Do not over tighten.

[Cookie Preferences](#)

## STEP 30

For Snap-In Lids Only

Remove the protective covering from the Clear Lid.

## STEP 31

For Snap-In Lids Only

Stretch silicone lid seal around the perimeter of the clear lid. It should be a snug fit.

## STEP 32

For Snap-In Lids Only

[Cookie Preferences](#) on the lid and the  
tab of the lid seal should  
mate in the same corner.

## STEP 33

Reconnect the negative terminal on the battery. Inspect your installation, make sure the kit is properly positioned and all fasteners are secure. Affix the ID/CARB label near the kit under the hood. The installation is now complete.

Cookie Preferences