



# INSTALL INSTRUCTIONS FOR 75-5110

[PRINT](#)

## BEFORE YOU START

This intake kit may not fit with the following Aftermarket Parts installed:

Body Lift or Lowering Kit

Custom Hood

Throttle Body Spacer / Upgrade

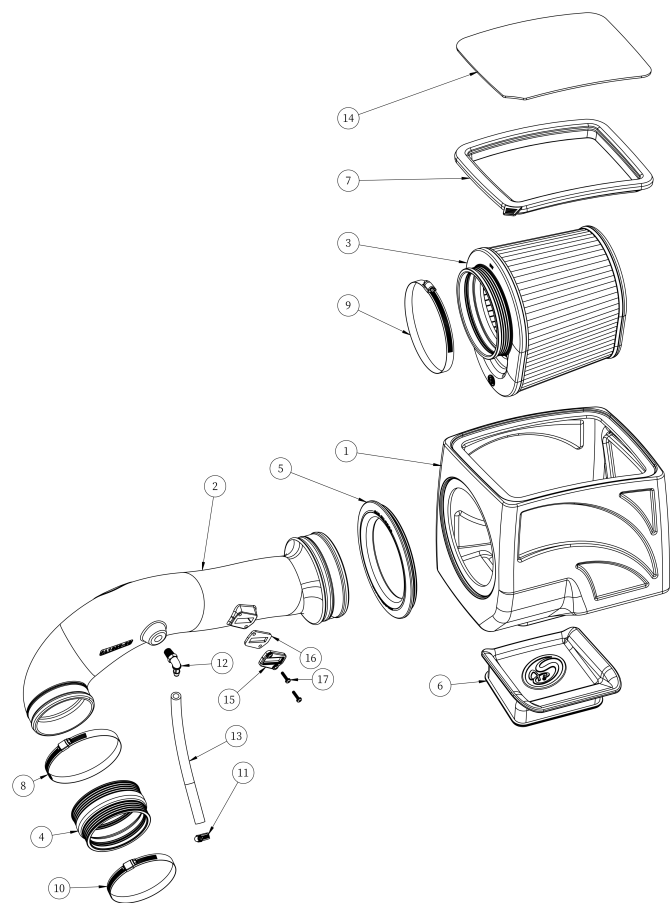
## REQUIRED TOOLS

- 8mm, 10mm, 14mm Socket/Wrench
- 1/4" Socket/Wrench or Flat Blade Screwdriver
- T15 Torx (Supplied)
- Phillips Screwdriver
- Panel Poppers

- Please read the entire product guide before proceeding.
- Ensure all parts are present.
- If you are missing any of the components, call our customer support at (909) 947-0015.
- Do not work on your vehicle while the engine is hot.
- Make sure the engine is turned off and the vehicle is in Park or the Parking Brake is set.



Cookie Preferences



ITEM NO.	PART NUMBER	DESCRIPTION	QTY.
1	AI1235B-02	AIR BOX	1
2	AI1325-00	INTAKE TUBE	1
3	KF-1062	AIR FILTER	1
4	AI1542C-01	Step Coupler	1
5	AI1689C-00	Tube Seal	1
6	AI1700C-00	Box Plug	1
7	AI2527C-00	SNAP-IN SEAL	1
8	AG1009-00	Hose Clamp, #72	1
9	AG1011-00	Hose Clamp, #88	1
10	AG1018-00	Hose Clamp, #64	1
11	AG1035-00	Hose Clamp, #10	1
12	AI1307-00	Hose Barb, 90 deg, 3/8 x 1/4 NPT	1
13	AI1572-01	Silicone Hose, 12"	1
14	AI1691-02	Clear Lid	1
15	AI1822-00	MAF Plate	1
16	AI1823-00	MAF Gasket	1
17	AI1837-00	Screw, 8-32 x 3/4"	2

STEP 1

[Cookie Preferences](#)

Ignition switched off and the parking brake set, disconnect the negative battery cable on both sides.

**IMPORTANT:** Failure to disconnect the battery for a minimum of 2 hours may cause the Check Engine Light to illuminate upon completion of the installation or subsequent operation. **DO NOT SKIP THIS STEP!**



## STEP 2

Remove the engine cover and set it aside. The engine cover will be reinstalled in Step 28.



## STEP 3

Disengage the red locking clip and disconnect the MAF sensor harness from the MAF sensor. Pop-out the harness

Cookie Preferences ed to the stock  
airbox.



### STEP 3 (IMAGE 2)

## STEP 4

Disconnect the CCV hose attached to the stock intake tube.

## STEP 5

Remove and set aside the two plastic push pins on the passenger side of the radiator shroud to access the front bolt securing the cross member. The plastic push pins will be reused in Step 27.

## STEP 6

Loosen the bolt on the fender side of the cross member,

[Cookie Preferences](#)

n and remove the bolt from underneath the radiator shroud then rotate the cross member out of the way. The bolts will be reused in Step 27.

## STEP 7

Loosen the hose clamps at the throttle body and airbox. Do not remove the intake tube yet.

## STEP 8

Disconnect the intake tube attached to the airbox and slightly prop it up. Disconnect or cut off the radiator hose clip attached to the stock intake tube. Be extremely careful not to puncture the

Cookie Preferences Close. Remove the intake tube from the vehicle.

## STEP 9

Lift up and remove the stock airbox from the vehicle

## STEP 10

Remove the four bolts securing the air box tray, then remove the airbox tray from the vehicle. Set the hardware aside, they will be reused in Step 18. Double-check to make sure that the clips nuts are still attached to the metal

Cookie Preferences t was underneath  
the airbox tray.

## STEP 10 (IMAGE 2)

## STEP 11

Disconnect the CCV hose on the engine side and remove it from the vehicle. Use a flat blade screwdriver to disengage the tab.



## STEP 11 (IMAGE 2)

## STEP 12

Disconnect the two push pins securing the plastic wire harness tray to the fender. Separate the wire harness from the tray then remove the tray from the vehicle. Reroute the wire harness underneath the metal flange with the clip nuts.

## STEP 13

Install the Tube Seal (H) onto the Airbox (A).

## STEP 14

Determine if you want to install the Box Plug (S) onto the Air Box (A). See the “Air Box Plug” note on Page 2 for more information. If the Box Plug is desired, simply press the Box Plug into the box opening until it snaps into place.

## STEP 14 (IMAGE 2)

## STEP 15

Carefully remove the MAF sensor from the stock airbox lid and install the MAF sensor onto the Intake Tube (I) with the supplied MAF Gasket (N), MAF Plate (P) and #8-32 Screws (O). Do not over tighten.

## STEP 16

Install the Hose Barb (M) into the Intake Tube (I) until finger tight, then turn it one to two

[Cookie Preferences](#)

turns with a wrench. Match the position of the barb as shown in the picture below.

## STEP 17

Install the Step Coupler (**K**) onto the throttle body with Hose Clamps #72 and #64 (**J** & **L**). The side with the smaller diameter goes onto the throttle body. Tighten Hose Clamp #64. Do not over tighten. Leave Hose Clamp #72 loose.

## STEP 18

Place the Air Box (**A**) into the vehicle and secure it to the

[Cookie Preferences](#)

mounting locations with the four stock bolts removed in Step 10. For an easier install, first, secure the air box on the fender side then secure the other bolts.

## STEP 19

Place the Air Filter (B) into the Airbox (A).

## STEP 20

Install the Intake Tube (I) through the Tube Seal (H) and Step Coupler (K). Tighten Hose Clamp #72 (J) on the step coupler. Do not over tighten.

## STEP 21

Install the Air Filter (B) onto the Intake Tube (I) and tighten Hose Clamp #88 (G). Position the air filter in the same position as shown below.

### **STOP! READ THIS BEFORE CONTINUING THE INSTALL**

If your kit came with our new snap-in lid design, please proceed to **STEP 25** to install your snap-in lid. If your lid is the traditional screw in lid, please proceed to the next step.

## STEP 22

Remove the protective covering of the Clear Lid (C).

## STEP 23

Install the Lid Seal (F) around the Clear Lid (C).

## STEP 24

Install the Clear Lid (C) onto the Air Box (A) with the #10-24 Screws (D) and Lid Washers (E).

## STEP 25

For Snap-In Lids Only

Remove the protective covering from the Clear Lid.

## STEP 26

For Snap-In Lids Only

Stretch silicone lid seal around the perimeter of the clear lid. It should be a snug fit.



## STEP 26B

For Snap-In Lids Only

The notch on the lid and the tab of the lid seal should mate in the same corner.

## STEP 27

Connect the Hose (Q) from the CCV port on the engine side with Hose Clamp #10 (R) to the Hose Barb (M) on the Intake Tube (I). Tighten the hose clamp onto the engine side. Do not over tighten.

[Cookie Preferences](#)

## STEP 28

Reconnect the MAF harness back into the MAF sensor and engage the red locking clip.

## STEP 29

Reinstall the cross member and the plastic push pins by tightening the two bolts from Step 6 and reinserting the three push pins from Step 5.

## STEP 30

Reinstall the engine cover.

## STEP 31

Reconnect the negative terminal on the battery. Inspect your installation, make sure the kit is properly positioned and all fasteners are secure. Keep all stock parts in case you would ever need to reinstall the stock intake assembly. Affix the ID label near the intake kit. The installation is now complete.

Cookie Preferences