



INSTALL INSTRUCTIONS FOR 75-5089

[PRINT](#)

BEFORE YOU START

This intake kit may not fit with the following Aftermarket Parts installed:

Body Lift or Lowering Kit

Custom Hood

Throttle Body Spacer / Upgrade

REQUIRED TOOLS

- 8mm, 10mm, 11mm Wrench/Socket
- 16mm Wrench
- T20 Torx (Supplied)
- Phillips Screwdriver
- Flat Blade Screwdriver

Please read the entire product guide before proceeding.

Ensure all parts are present.

If you are missing any of the components, call our customer support at (909) 947-0015.

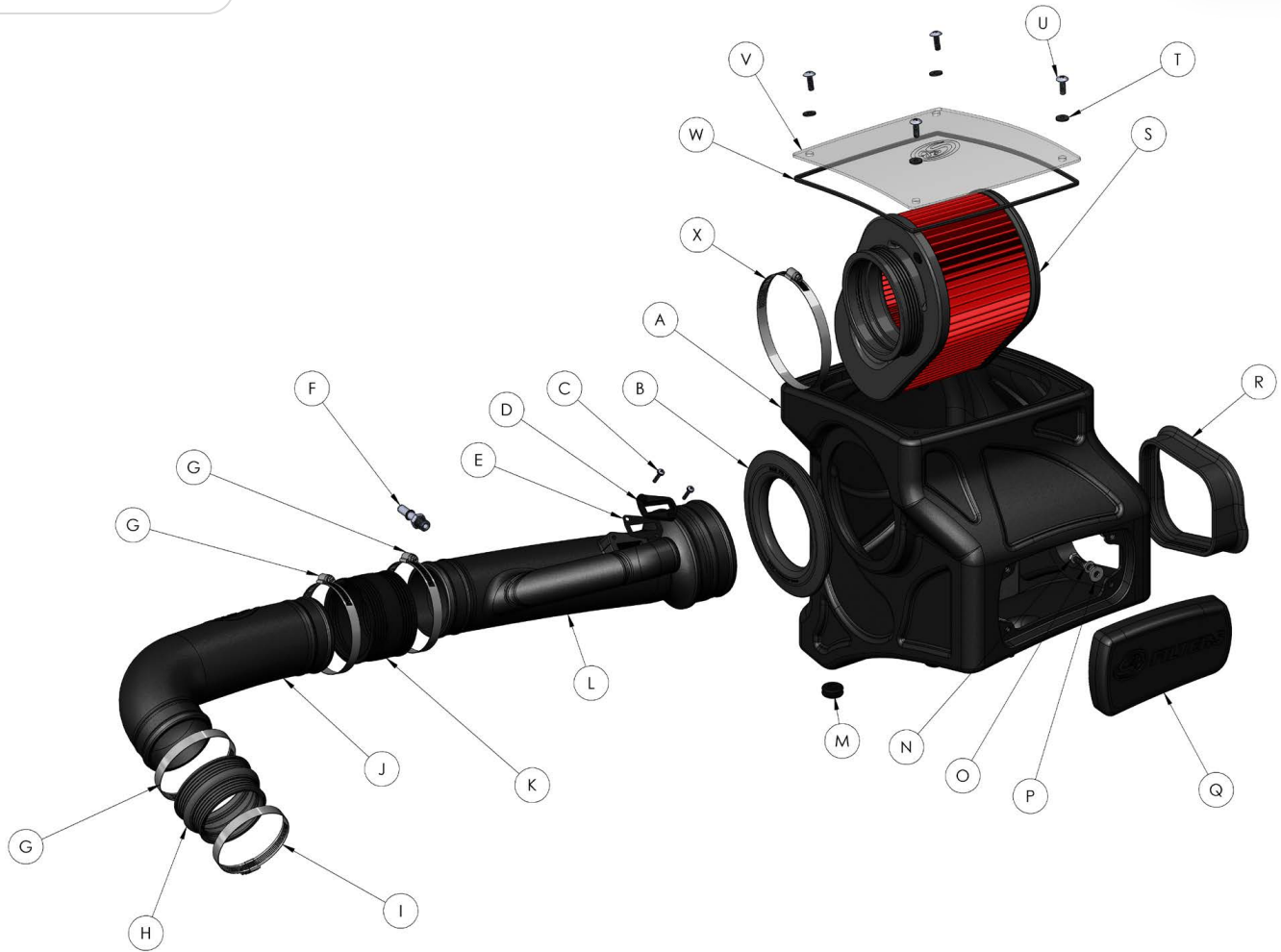
Do not work on your vehicle while the engine is hot.

Make sure the engine is turned off and the vehicle is in Park or the Parking Brake is set.



Hi. Need any help?



[Cookie Preferences](#)

[Cookie Preferences](#)

ITEM	PART NUMBER	DESCRIPTION	QTY.
A	AL1260-00	AIR BOX	1
B	AI1650C-00	TUBE SEAL	1
C	AI1837-00	SCREW, SEMS, #8-32 x 3/4"	2
D	AI1822-00	MAF PAD	1
E	AI1823-00	MAF GASKET	1
F	AI1776-00	QUICK CONNECT, 3/8" DIA TO 1/4" NPT	1
G	AG1008-00	HOSE CLAMP #60	3
H	AI1316C-00	STEP COUPLER	1
I	AG1007-00	HOSE CLAMP, #52	1
J	AL1320A-00	INTAKE TUBE (THROTTLE BODY)	1
K	AI1678C-00	STRAIGHT COUPLER	1
L	AL1320-00	INTAKE TUBE (FILTER)	1
M	AI1563-00	AIRBOX GROMMET	2
N	AI1068-00	BOLT, HEX, 1/4"-20 x 3/4"	4
O	AI1309-00	LOCK WASHER, 5/16"	4
P	AI1073-00	FLAT WASHER, 1/4"	4
Q	AL1263-00	BOX PLUG	1
R	AI1825C-00	FENDER SEAL	1
S	KF-1064	AIR FILTER	1
T	AI2006-00	LID WASHER	4
U	AI2005-00	SCREW, FLAT, #10-24 x 1/2"	4
V	AI1893-00	CLEAR LID	1
W	AI1766-04	LID SEAL	1
X	AG1010-00	HOSE CLAMP, #80	1
PARTS BELOW ARE NOT SHOWN IN THE EXPLODED VIEW			
Y	AI1327-00	T-20 TORX KEY	1

STEP 1

[Cookie Preferences](#) Ignition switched off and the parking brake set, disconnect the negative battery cable on the driver's side.

IMPORTANT: Failure to disconnect the battery for a minimum of 2 hours may cause the Check Engine Light to illuminate upon completion of the installation or subsequent operation. **DO NOT SKIP THIS STEP!**



STEP 2

Disengage the red locking clip and disconnect the MAF sensor harness from the MAF sensor.



STEP 3

Remove the three bolts securing the engine cover.

STEP 4

Loosen the hose clamp at the throttle body. The location of the throttle body is closest to the driver's side.

**LOOSEN THE HOSE
CLAMP AT THE
THROTTLE BODY. THE
LOCATION OF THE
THROTTLE BODY IS
CLOSEST TO THE
DRIVER'S SIDE.**

[Cookie Preferences](#)

Loosen the hose clamp and disconnect the CCV hose attached to the engine cover.

STEP 6

Loosen the hose clamp and disconnect the intake tube from the stock airbox.

STEP 7

Twist to remove the engine oil cap and set the cap aside.

STEP 8A

Locate the vacuum line attached to the engine cover that is located on the passenger side towards the front of the vehicle.

STEP 8B

Press the tab to disengage the connector from the barb, then pull off. Remove the engine cover from the vehicle.

STEP 9

Reinstall the engine oil cap.

STEP 10

Remove the two mounting nuts securing the stock airbox and set them aside. The mounting nuts will be reused in Step 21.

STEP 11

Disconnect the wire harness clip from the stock airbox. Lift the stock airbox up to unseat the prong and remove the stock airbox from the vehicle. Double-check to make sure the stock grommet is still in on the wheel arch hump.

STEP 12

Carefully remove the MAF sensor from the stock intake box lid. Use the supplied 8-32 Screws (C), MAF Pad (D), MAF Gasket (E) to install the sensor onto the Intake Tube (Filter) (L). **Do not over tighten.**

STEP 13

Install the Quick Connect (F) into the Intake Tube (Filter) (L) until finger tight, then turn it one to two complete turns.

[Cookie Preferences](#)

STEP 14

Remove two metal bushings from the stock airbox. Set the metal bushings aside, they will be reused in Step 16.

[Cookie Preferences](#)

STEP 15

Install the Air Box Grommets
(M) into the Airbox (A).

STEP 16

Install the metal bushings
removed in Step 14 into the
Airbox Grommets (M).

STEP 17

Insert the Fender Seal (R)
into the Airbox (A).

STEP 18

Install the Tube Seal (B) onto the Airbox (A).

STEP 19

Determine if you want to install the Box Plug (R) or leave the secondary inlet open on the Airbox (A). To install the box plug, install the 1/4-20 Bolts (N), Lock Washers (O), and Washers (P) from inside the airbox.

STEP 20

Installed the Airbox (A) into the truck. Ensure that the threaded studs go through the Airbox Grommets (M) and the prong on the airbox goes into the stock grommet.

STEP 21

Reinstall the two mounting nuts removed in Step 10. Adjust the position of the Airbox (A) so that the Fender Seal (R) makes contact with the fender opening before tightening.

STEP 22

[Cookie Preferences](#)

Intake Tube (Filter)

(L) into the Airbox (A).

Rotate the tube so that the

Quick Connect (F) is

horizontal as possible.

STEP 23

Install the Step Coupler (H) onto the throttle body with Hose Clamps #60 and #52 (G & I). The side with the smaller diameter goes onto the throttle body. Tighten the #52 Hose Clamp. Leave #60 Hose Clamp loose.

STEP 24

Install the Straight Coupler (K) with Hose Clamps #60 (G) onto the straight side of the Intake Tube (Throttle Body) (J).

[Cookie Preferences](#)

Note: Slide the couplers up onto the intake tube as much as possible. This will help make the install easier.

STEP 24 (IMAGE 2)

STEP 25

Install the Intake Tube (Throttle Body) (J) into the Step Coupler (H). Slide the Straight Coupler (K) onto the Intake Tube (Filter) (L) to connect the two intake tubes together. Make sure that both the step coupler and straight coupler are completely installed onto the intake tubes up to the stop beads then tighten all hose clamps.

STEP 25 (IMAGE 2)

STEP 26

Connect the vacuum line into the Quick Connect (F). You should hear the vacuum line snap when it locks onto the quick connect.

STEP 27

Install the CCV hose into the Intake Tube (Filter) (L) and

[Cookie Preferences](#) d hose clamp.

STEP 28

Place the Air Filter (S) into the Airbox (A). Rotate the air filter into position as shown below and tighten the #80 Hose Clamp (X).

STEP 29

Press the Lid Seal (**W**) into the groove in the Airbox (**A**).

STEP 30

Remove the protective covering on the Clear Lid (**V**).

STEP 31

Install the Clear Lid (**V**) onto the Airbox (**A**) with the 10-24 Screws (**U**) and Lid Washers (**T**).

STEP 32

Reconnect the MAF sensor harness into the MAF sensor and engage the red locking clip.

STEP 33

Reconnect the negative terminal on the battery. Inspect your installation, make sure the kit is properly positioned and all fasteners are secure. Keep all stock parts in case you ever need to reinstall the stock intake assembly. Affix the ID label near the intake kit. The installation is now complete.

Cookie Preferences