



SHOP CATEGORIES

WHY S&amp;B

SHOP BY VEHICLE



0

# INSTALL INSTRUCTIONS FOR 75-5083



PRINT

## BEFORE YOU START

- Please read the entire product guide before proceeding.
- Ensure all parts are present.
- If you are missing any of the components, call our customer support at (909) 947-0015.
- Do not work on your vehicle while the engine is hot.
- Make sure the engine is turned off and the vehicle is in Park or the Parking Brake is set.
- This intake kit may not fit with the following Aftermarket Parts installed: Body Lift or Lowering Kit, Custom Hood, Throttle Body Spacer / Upgrade

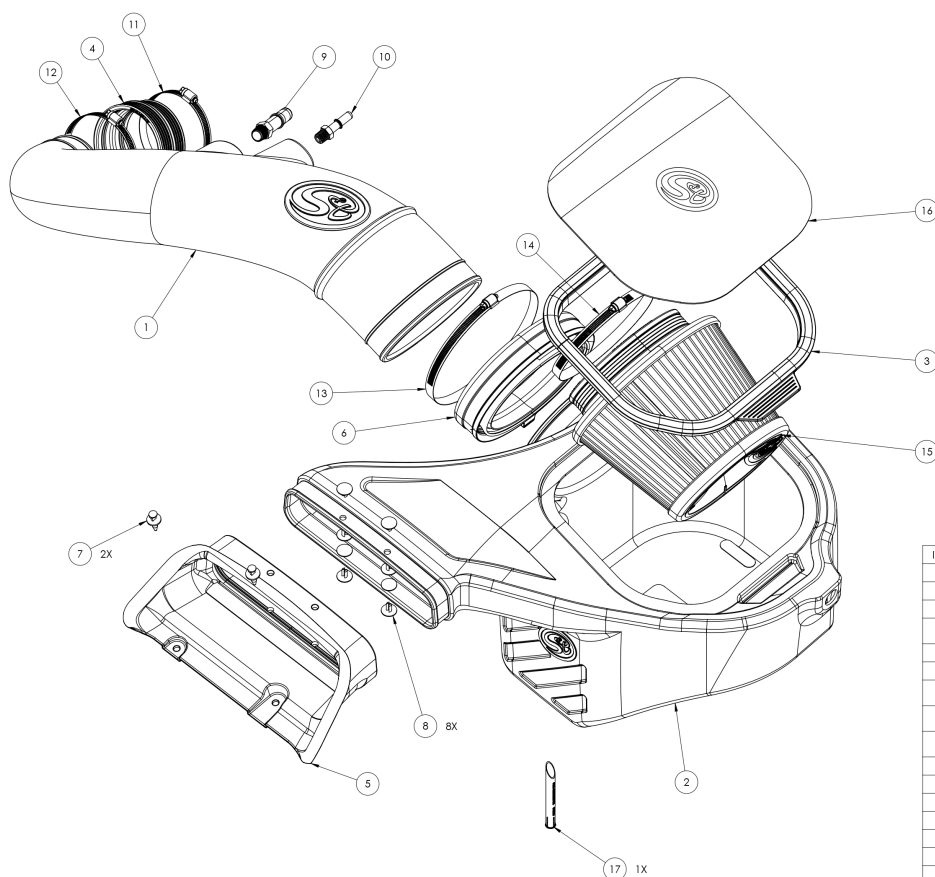
## REQUIRED TOOLS

- 10mm, 13mm Wrench & Socket
- 5/16" Nut Driver & 1/4" Nut Driver or Flat Blade Screwdriver
- Phillips Screwdriver, Pliers or Channel Locks



Hi. Need any help?





ITEM NO.	PART NUMBER	DESCRIPTION	QTY.
1	AL1256-00	Intake Tube	1
2	AL12468-03	Air Box	1
3	AI3632C-00	Snap-In Lid	1
4	AI1581C-00	Silicone Step Coupler, 3/75 X 3.375 X 2.00 Long	1
5	AI1758C-00	Front Inlet	1
6	AI1604C-01	Rubber Cuff	1
7	AI1763-00	Plastic Rivet, 1 1/16 dia head, 1/4 dia x 7/8 long stem	2
8	AI1762-00	Rivet, Interlocking Shank, 1/4" dia x .50-.81" Grip, Blk Nylon	8
9	AI1701-01	Fitting, Quick Connect to 3/8"NPT, Trj, Molded Black	1
10	AI1776-01	Quick Connect, 3/8 Dia x 1/4 NPT	1
11	AG1019-00	Hose Clamp, #56	1
12	AG1008-00	Hose Clamp, #60	1
13	AG1012-00	Hose Clamp, #104	1
14	AG1011-00	Hose Clamp, #88	1
15	KF-1058	Filter	1
16	AI3633-00	Clear Lid	1
17	AI2355-00	CCV Insert	1

## STEP 1

With the ignition switched off and the parking brake set, disconnect the negative battery cable on the battery.

IMPORTANT: Failure to disconnect the battery for a minimum of 2 hours may

[Cookie Preferences](#)

The Check Engine Light to illuminate upon completion of the installation or subsequent operation. DO NOT SKIP THIS STEP!



## STEP 2

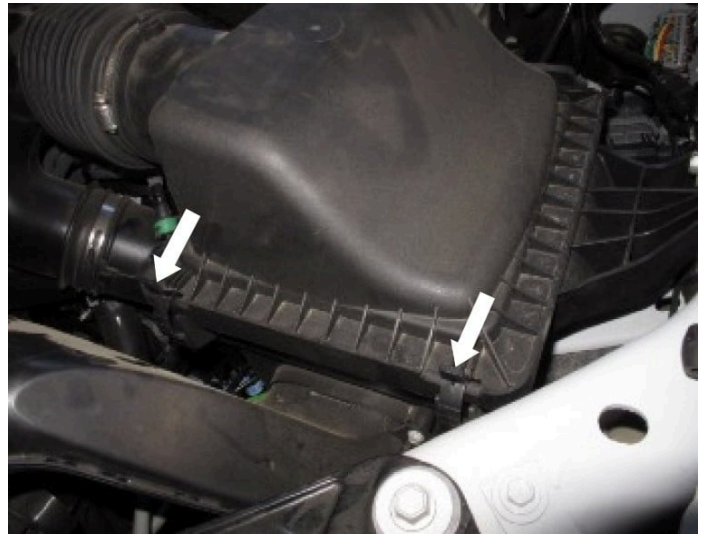
Loosen the hose clamp by the stock airbox and pull the tube out.



[Cookie Preferences](#)

## STEP 3

Unlatch the two latches on the stock airbox.



## STEP 4

Lift and remove both the lid and air filter.

## STEP 5

Disconnect the vacuum line. Push down on the black clip and pull the hose connector out of the hose barb.

## STEP 6

Pull-on the lever to remove the PCV hose from the hose barb.

## STEP 7

Remove the retaining bolt on the stock air box using a 13mm socket.

**Note:** The retaining bolt will be reused again in Step 18. Disconnect any harness clips attached to the stock airbox. Use a panel popper or flat blade screwdriver.

## STEP 7 (IMAGE 2)

## STEP 8

Remove the plastic rivets on the stock air scoop using a flat head screwdriver.

[Cookie Preferences](#)

## STEP 9

Lift and remove the stock airbox.

## STEP 10

Loosen the hose clamp at the throttle body.

## STEP 11

Remove the stock air tube.

## STEP 12

Remove the grommet and metal bushing from the stock airbox. Removing the metal bushing first will help make removing the grommet easier.

## STEP 13

Install the grommet into Airbox (A) first and then install the metal bushing from the inside.

## STEP 14

Install the Rubber Cuff (C) and Hose Clamp #104 (K) onto the side of the Airbox



[Cookie Preferences](#)

ke sure that the rubber pull tab on the tube seal is on the bottom. Tighten the hose clamp.

## STEP 15

Install the Front Inlet (**G**). Use the supplied Plastic Rivet (**H**) to secure the front inlet to the Airbox (**A**). Use two plastic rivets on each hole and pinch them together to lock them in place.

## STEP 16

Install the two Quick Connect Fittings (**Q** & **R**) on to Intake Tube (**B**) until hand tight then use a crescent wrench and

[Cookie Preferences](#)

it another one to two complete turns.

**IMPORTANT:** Do not over tighten, as the Quick Connect Fittings can break or the threaded inserts may strip!

## STEP 17

Install the Airbox (A). Make sure that the box prongs are aligned with the factory grommets. Push down on the airbox to make sure that the prongs are completely seated.

## STEP 17 (IMAGE 2)

## STEP 18

Reinstall the retaining bolt removed in Step 7 and tighten the bolt to secure the Airbox (A). Install the retaining bolt from inside the airbox.

## STEP 19

Install the Silicone Step Coupler (N) and two Hose Clamp #60 & #56 (O & P) onto the throttle body.

## STEP 20

Place the Air Filter (D) and Hose Clamp #88 (J) inside the Airbox (A). Turn the filter sideways and slide it into the airbox.

## STEP 21

Feed the Air Intake Tube (B) underneath the coolant line through the Rubber Cuff (C) until the bead on the air intake tube meets up to the rubber cuff. Slide the Air

[Cookie Preferences](#)

) over the tube until  
the tube bottoms out on the  
filter flange step.

## STEP 21 (IMAGE 2)

## STEP 21 (IMAGE 3)

## STEP 22

Tighten the Hose Clamp #88  
(J) at the Air Filter (D).

## STEP 23

Insert the Air Intake Tube (B)  
into the Silicone Step Coupler  
(N) at the throttle body. Once  
everything is in place, tighten  
Hose Clamp #56 & #52  
(O & P).

## STEP 24

Reconnect the vacuum line.  
Push in the connector over  
the Quick Connect Fitting (R)

[Cookie Preferences](#)

you hear it snap into place.

**IMPORTANT:** Do not over tighten, as the Quick Connect Fittings can break or the threaded inserts may strip!

## STEP 24 (IMAGE 2)

Reconnect the PCV hose.  
Push in the connector over the Quick Connect Fitting (Q) until you hear it snap into place.

## STEP 25

Insert the two-wire clips disconnected in Step 7 (Image 2) into the holes on the side of the Airbox (A).  
Use zip ties to secure any loose wires or harnesses away

[Cookie Preferences](#)

ny hot surfaces and/or  
moving components that may  
cause damage.

## STEP 26

Secure the Front Inlet (G).  
Firmly push down on the  
center pin of the Plastic Rivet  
(I) until it locks into the  
closed position.

## STOP! READ THIS BEFORE CONTINUING THE INSTALL

If your kit came with our new  
snap-in lid design, please  
proceed to **STEP 30** to install



[Cookie Preferences](#)

ap-in lid. If your lid is the traditional screw in lid, please proceed to the next step.

## STEP 27

Remove the protective covering from the Clear Lid (E).

## STEP 28

Install the Lid Seal (F) around the Clear Lid (E).

## STEP 29

[Cookie Preferences](#)

the Clear Lid (E) on top of the Airbox (A) and secure the lid using the six provided Truss Head Phillips Screw (M) and Sealing Washer (L). Do not over tighten.

## STEP 30

For Snap-In Lids Only

Remove the protective covering from the Clear Lid.

## STEP 31

For Snap-In Lids Only

The notch on the lid and the tab of the lid seal should mate in the same corner.

## STEP 32

For Snap-In Lids Only

Stretch silicone lid seal around the perimeter of the clear lid. It should be a snug fit.

## STEP 33

Reconnect the negative terminal on the battery.  
Inspect your installation, make sure the kit is properly positioned and all fasteners

[Cookie Preferences](#)

ure. Affix the ID/CARB  
label near the kit under the  
hood. The installation is now  
complete.

Cookie Preferences