



INSTALL INSTRUCTIONS FOR 75-5081 SNAP IN

[PRINT](#)

BEFORE YOU START

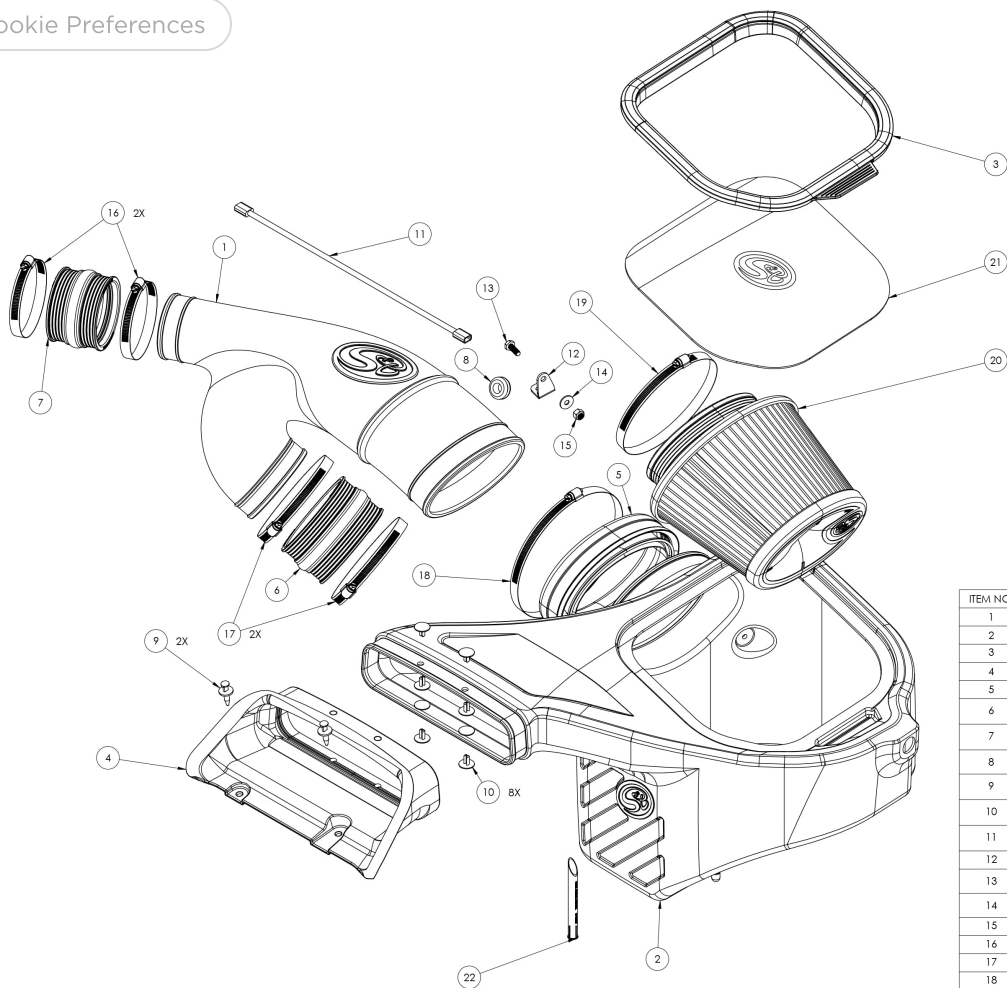
- Please read the entire product guide before proceeding.
- Ensure all parts are present.
- If you are missing any of the components, call our customer support at (909) 947-0015.
- Do not work on your vehicle while the engine is hot.
- Make sure the engine is turned off and the vehicle is in Park or the Parking Brake is set.
- Note: This intake kit may not fit with the following Aftermarket Parts installed: Body Lift or Lowering Kit, Custom Hood, Throttle Body Spacer / Upgrade

REQUIRED TOOLS

- 10mm, 13mm Wrench & Socket
- 5/16" Nut Driver & 1/4" Nut Driver or Flat Blade Screwdriver
- Phillips Screwdriver, Pliers or Channel Locks



Cookie Preferences



ITEM NO.	PART NUMBER	DESCRIPTION	QTY.
1	AL1246-00	Intake Tube	1
2	AL12468-03	Air Box	1
3	AI3632C-00	Snap-in Lid Seal	1
4	AI1758C-00	Front Inlet	1
5	AI1604C-01	Rubber Cuff	1
6	AI1333C-00	Coupler, Hump, 3.10 ID x 2.50 Long, Silicone	1
7	AI1601C-00	Coupler, Hump, 3.10 ID x 2.50 Long, Silicone	1
8	AI1563-00	Grommet, 1/2" ID x 1-1/16" OD, 7/16" Tnx, 3/16" Panel	1
9	AI1763-00	Plastic Rivet, 11/16 dia head, 1/4 dia x 7/8 long stem	2
10	AI1762-00	Rivet, Interlocking Shank, 1/4" dia x .50-.81" Grip, Blk Nylon	8
11	AI1969-00	IAT Sensor Harness Extension, 14" Long	1
12	AI1970-00	Vacuum Line Support	1
13	AI1068-00	Screw, Hex Head, 1/4-20 UNC x .75, Gr 5, Zn Pltd	1
14	AI1535-00	Washer, Flat, M6, 18 mm OD, DIN 9021, Zn Pltd	1
15	AI1074-00	Locknut, Nylon, 1/4-20 UNC, Zn Pltd	1
16	AG1007-00	Hose Clamp, #52	2
17	AG1009-00	Hose Clamp, #72	2
18	AG1012-00	Hose Clamp, #104	1
19	AG1011-00	Hose Clamp, #88	1
20	KF-1058	Filter	1
21	AI3633-00	Clear Lid	1
22	AI2355-00	CCV Insert	1

STEP 1

With the ignition switched off and the parking brake set, disconnect the negative battery terminal on the battery.

IMPORTANT: Failure to disconnect the battery for a

[Cookie Preferences](#)

m of 2 hours may cause the Check Engine Light to illuminate upon completion of the installation or subsequent operation. **DO NOT SKIP THIS STEP!**



STEP 2

Loosen the hose clamp by the stock airbox and pull the tube out.



STEP 3

Loosen the hose clamp at the tube leading to the turbo inlet on the passenger side.

STEP 4

Loosen the hose clamp at the tube leading the turbo inlet on the driver side.

[Cookie Preferences](#)

STEP 5

Unhook the two latches on the stock airbox.

Disconnect the clip securing the vacuum line on the rear of the air box

[Cookie Preferences](#)

STEP 6

Lift and remove both the lid and stock air filter.

[Cookie Preferences](#)

STEP 7

Depress the button on the IAT sensor and pull the connector off the IAT sensor.

[Cookie Preferences](#)

STEP 8

Lift up and remove the stock air tube.

STEP 9

Remove the retaining bolt on the stock air box using a 13mm socket.

Note: The retaining bolt will be reused in Step 22.

STEP 10

Remove the plastic rivets on the stock air inlet using a flat head screwdriver.

[Cookie Preferences](#)

STEP 11

Disconnect the two wire harness clips on the stock airbox.

[Cookie Preferences](#)

STEP 12

Lift and remove the stock airbox.

STEP 13

Remove the grommet and metal bushing from the stock airbox. Removing the metal bushing first will make removing the grommet easier.

[Cookie Preferences](#)

STEP 14

Install the grommet into airbox (A) first and then install the metal bushing from the inside.

STEP 15

Install the Vacuum Line
Bracket (**W**) with the 1/4-20
Screw (**X**), Washer (**Y**) and
Locknut (**Z**).

STEP 16

Install the Cuff (C) and #104 Hose Clamp (L) onto the side of the airbox (A). Make sure that the rubber pull tab on the tube seal is on the bottom. Tighten the hose clamp.

STEP 17

Install the Front Inlet (G). Use the supplied Plastic Rivet (H) to secure the front inlet to the airbox (A). Use two plastic rivets on each hole and pinch them together to lock them in place.

STEP 18

Install the Grommet (V) into the Intake Tube (B).

STEP 19

Install the Hump Coupler (P) with Hose Clamp #52 (R) into the Intake Tube (B) that leads to the passenger side. Do not tighten the hose clamps.

Install the Straight Coupler (U) and Hose Clamp #72 (T) that leads to the driver's side. Do not tighten the hose clamps. To make the installation onto the turbo inlet tubes easier, try to slide the coupler in over the air intake tube as much as possible.

Cookie Preferences

STEP 19 (IMAGE 2)

2.7L ECOBOOST ONLY

For 2.7L EcoBoost Only. You will need to reroute the vent hose. Remove the vent hose connector by pinching the red clip and pushing in through the connector. Reroute the vent hose as shown. Re-orient the black plastic hose clip and snap in place the two vent hoses. Then reinstall the red connector.

[Cookie Preferences](#)

**2.7L ECOBOOST ONLY
(IMAGE 2)**

**2.7L ECOBOOST ONLY
(IMAGE 3)**

STEP 20

Locate the CCV hose on the lower intake tube, highlighted with the red arrow.

STEP 20B

Disconnect the quick disconnect by rotating the tab on the quick disconnect. Removing the engine cover improves access, but is not necessary.

STEP 20B (IMAGE2)

STEP 20C

Orient the CCV tube insert, the angled cut on the insert should be facing the turbo/firewall.

STEP 20D

Insert the CCV tube insert until the insert bottoms out against the quick disconnect.

STEP 20E

Reattach the hose and
reinstall the cover, if
previously removed.

STEP 20E (IMAGE 2)

Reattach the hose and
reinstall the cover, if
previously removed.

STEP 21

Install the airbox (A). Make sure that the box prongs are aligned with the factory grommets. Push down on the airbox to make sure that the prongs are completely seated.

STEP 21 (IMAGE 2)

STEP 22

Reinstall the retaining bolt removed in Step 9 and tighten the bolt to secure the airbox (A). Install the retaining bolt from inside the airbox.

STEP 23

Remove the IAT sensor from the OEM intake tube. Lift up on the tab and rotate the sensor counter clock wise

STEP 23B

Install the IAT Sensor into the Intake Tube (B). Make sure to remove the IAT Sensor O-Ring prior to installing. Use a twisting motion to make it easier to guide the sensor into the grommet. Make sure that the sensor is seated all the way so that the sensor tab is touching the grommet and the tab of the sensor is facing the bead in the intake tube.

Cookie Preferences

[Cookie Preferences](#)

STEP 23 (IMAGE 3)

[Cookie Preferences](#)

STEP 24

Place the Air Filter inside the airbox.

STEP 25

Feed the Intake Tube through the cuff and into the airbox until the tube fits up to the bead. As you are feeding, try to align the air intake tube with the turbo inlet tubes.

STEP 26

Once the intake tube bead is up to the Cuff. Slide the Air Filter onto the Intake Tube.

[Cookie Preferences](#)

STEP 27

Tighten the Hose Clamp #88
at the Air Filter

STEP 28

Slide the Straight Coupler (U) over the driver side turbo inlet tube on the bottom. Leave the hose clamps loose for now.

STEP 29

Slide the Hump Coupler (P) over the passenger side turbo inlet tube.

STEP 30

Tighten both #52 Hose Clamps (R).

[Cookie Preferences](#)

STEP 31

Tighten both #72 Hose
Clamps (T) on the driver side.

STEP 32

Reconnect the wiring harness connector back into the IAT sensor.

Use the IAT Sensor Extension Harness if the OEM harness does not reach.

STEP 33A

For 2015-2016 Models and 2017 2.7L EcoBoost Only.

Insert the two-wire harness clips disconnected in Step 11 into the holes on the side of the airbox (A).

For 2017 3.5L EcoBoost Only.

Insert one wire harness clip into the hole under the S&B Logo and use zip ties secure the other wire harness clip away from any hot surfaces and moving components that may cause damage.

STEP 33B

For 2017 3.5L EcoBoost Only.

Reconnect the clip securing the vacuum line into the slot on the Vacuum Line Bracket (W).

STEP 34

Use the two provided Plastic Rivet (J) to secure the Front Inlet (G) onto the radiator cover. Firmly push down on the center pin of the plastic rivet until it locks into the closed position.

STEP 38

Remove the protective covering from the Clear Lid.

STEP 39

Stretch silicone lid seal around the perimeter of the clear lid. It should be a snug

[Cookie Preferences](#)

notch on the lid and the tab of the lid seal should mate in the same corner.

STEP 40

Install the snap in lid into the box. Start on one side and work your way around the box pressing the seal into the lip of the box.

STEP 41

Reconnect the negative terminal on the battery.

[Cookie Preferences](#)

your installation, make sure the kit is properly positioned and all fasteners are secure. Keep all stock parts incase you would ever need to reinstall the stock intake. The installation is now complete.

Cookie Preferences