



SHOP CATEGORIES

WHY S&B

SHOP BY VEHICLE



0

INSTALL INSTRUCTIONS FOR 75-5039

**PRINT**

BEFORE YOU START

- Please read the entire product guide before proceeding.
- Ensure all parts are present.
- If you are missing any of the components, call our customer support at (909) 947-0015.
- Do not work on your vehicle while the engine is hot.
- Make sure the engine is turned off and the vehicle is in Park or the Parking Brake is set
- Note: This intake kit may not fit with the following Aftermarket Parts installed: Body Lift or Lowering Kit, Custom Hood, Throttle Body Upgrade

REQUIRED TOOLS

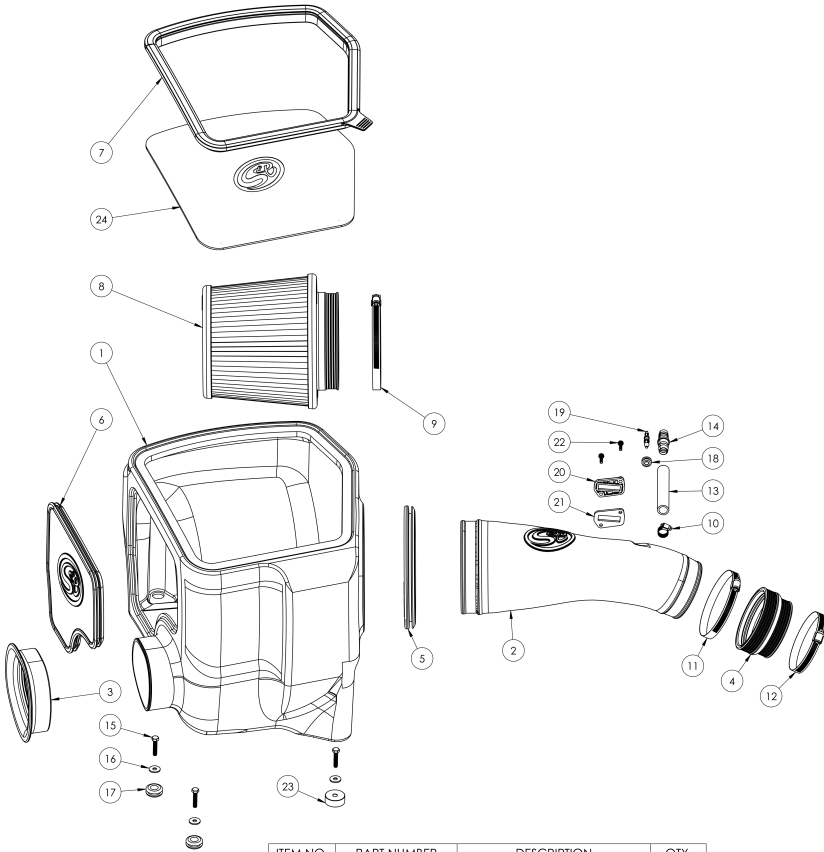
- 8mm, 10 mm socket wrench
- Phillips Screwdriver



Hi. Need any help?



Cookie Preferences



ITEM NO.	PART NUMBER	DESCRIPTION	QTY.
1	AL1326B-01	Air Box	1
2	AL1326-00	Intake Tube	1
3	AI1580C-00	Fender Seal	1
4	AI1581C-00	Silicone Step Coupler	1
5	AI1972C-00	Tube Seal	1
6	AI2052C-00	Box Plug	1
7	AI2323C-01	Snap-in Seal	1
8	KF-1056	Air Filter	1
9	AG1011-00	Hose Clamp, #88	1
10	AG1013-00	Hose Clamp, #6	1
11	AG1018-00	Hose Clamp, #64	1
12	AG1019-00	Hose Clamp, #56	1
13	AI1038-01	Hose, 1/2" x 7", BK	1
14	AI1110-00	Hose Adapter	1
15	AI1257-00	Screw, Hex Head, M6 x 1.0 x 30	3
16	AI1535-00	Washer, Flat, M6	3
17	AI1563-00	Box Grommet	2
18	AI1593-00	Tube Grommet	1
19	AI1594-00	Small Hose Adapter	1
20	AI1822-00	MAF Plate	1
21	AI1823-00	MAF Gasket	1
22	AI1837-00	Screw, 8-32 X 3/4	2
23	AI2051-00	Box Mount Spacer	1
24	AI2054-01	Clear Lid	1

THREAD LOCKER USE

[Cookie Preferences](#)

We provided a small tube of thread locker in your kit. Whenever you see the symbol above on a step of the instructions apply 1 small drop of the thread locker to the threads of the screws or bolts. This will keep your hardware from vibrating loose during rough driving. If the hardware ever needs to be removed, do so slowly to avoid having the inserts strip out from the plastic.

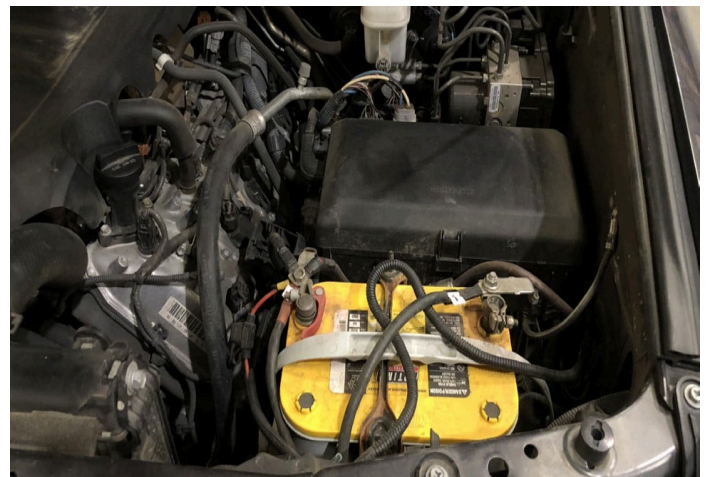


STEP 1

With the ignition switched off and the parking brake set, disconnect the negative battery cable on the passenger side then remove the engine cover.

IMPORTANT: Failure to disconnect the battery for a minimum of 2 hours may cause the Check Engine Light to illuminate upon completion of the installation or subsequent operation.

DO NOT SKIP THIS STEP!



STEP 2

Disconnect the MAF sensor and vacuum lines from the stock intake tube.



STEP 3

Loosen the hose clamp on the intake tube at the throttle body.

STEP 4

Un-latch clips on the airbox and remove intake tube

[Cookie Preferences](#) only and stock air filter
from the vehicle.

STEP 5

Loosen the two bolts
securing the airbox and
remove airbox from the
vehicle.

STEP 6

Remove MAF sensor from the stock intake tube

STEP 7

Install MAF Sensor, Plate (M), and Gasket (L) onto Intake Tube (N) with provided Hardware (P).

STEP 8

Install Grommet (D) and Hose Adapter (J) into Intake Tube (N). The large side of the adapter goes into the intake tube grommet.

STEP 9

Install Hose Adapter (G) into Hose (F).

STEP 10

Install the assembled Hose (F) into the stock vacuum hose.

STEP 11

Install Grommets (I) into two holes on the bottom of Airbox (A).

STEP 12

Install M6 Bolt (Q), Washer (H), and Spacer (K) into the remaining hole in the bottom of the Airbox (A) then apply Thread Locker (AA) to the threads on the bolt.

STEP 13

Install Tube Seal (O) onto Airbox (A).

STEP 14

Install Fender Seal (C) onto Airbox (A).

STEP 15

(Optional): Determine if you want to install the Box Plug (X) onto the Airbox (A). See the “Intake Box Plug” to decide the desired setup. Leave Box Plug uninstalled for maximum airflow.

STEP 16

Install Airbox (A) into the vehicle. Apply Threadlocker (AA) to the threads on the remaining two M6 Bolts (Q). Tighten the bolts with Washers (H).

Note: Do not fully tighten the bolt. The washer will begin to pull through the grommet if overtighten. Applying the threadlocker will prevent the bolts from backing out.

STEP 17

Install Coupler (E) onto the throttle body using Hoseclamp (R). Tighten the Hose clamp.

STEP 18

Install Intake Tube (N) by first feeding the intake tube from inside of the airbox to the throttle body and tighten Hose Clamp (S).

STEP 18 (IMAGE 2)

...continued

STEP 19

Secure vacuum hoses onto Intake Tube (N) and tighten

[Cookie Preferences](#)

mp (T) for Hose (F)
and pushing the smaller hose
onto Hose Adapter (J).
Ensure Adapter (J) is
properly seated in Tube
Grommet (D). Reconnect
MAF sensor harness to the
MAF sensor.

STEP 20

Install Filter (B) onto Intake
Tube (N) and tighten the
Hoseclamp (U).

STEP 21

Install Lid Seal (Z) into Airbox (A).

STEP 22

Remove all protective films from Clear Lid (Y).

STEP 23

Install Clear Lid (Y) with Lid Washers (W) and Lid Screws (V).

STEP 24

Reconnect negative battery terminal.

STEP 25

Reinstall the stock engine cover.

STEP 26

Inspect your installation, make sure the kit is properly positioned and all fasteners are secure. Keep all stock

[Cookie Preferences](#)

In case you would ever need to reinstall the stock intake assembly. Affix the ID label near the intake kit. The installation is now complete.