



INSTALL INSTRUCTIONS FOR 10-1010



PRINT

BEFORE YOU START

- Please read the entire product guide before proceeding
- Ensure all parts are present.
- If you are missing any parts, please call or text us at (909)-675-1313
- Do not work on your vehicle while the underbody components are hot.
- Make sure the vehicle is in park or the parking brake is set if you plan on working on the ground. If working on a lift, make sure the vehicle is lifted safely and securely.
- Drain your original fuel tank before beginning the S&B Installation process. S&B Tanks recommends removing only an empty or near empty tank for your safety. We recommend using a siphon or electronic transfer pump.
 - **Disconnect and isolate both of the negative battery cables**

- **Before installing S&B Tank, conduct pressure test to ensure o'ring is properly seated.**

- **In-bed Auxiliary Fuel Tanks will void the Lifetime Warranty.**

- **Nozzle at high flow fuel station may continue to "click off". Tank is designed to work at regular fuel stations.**

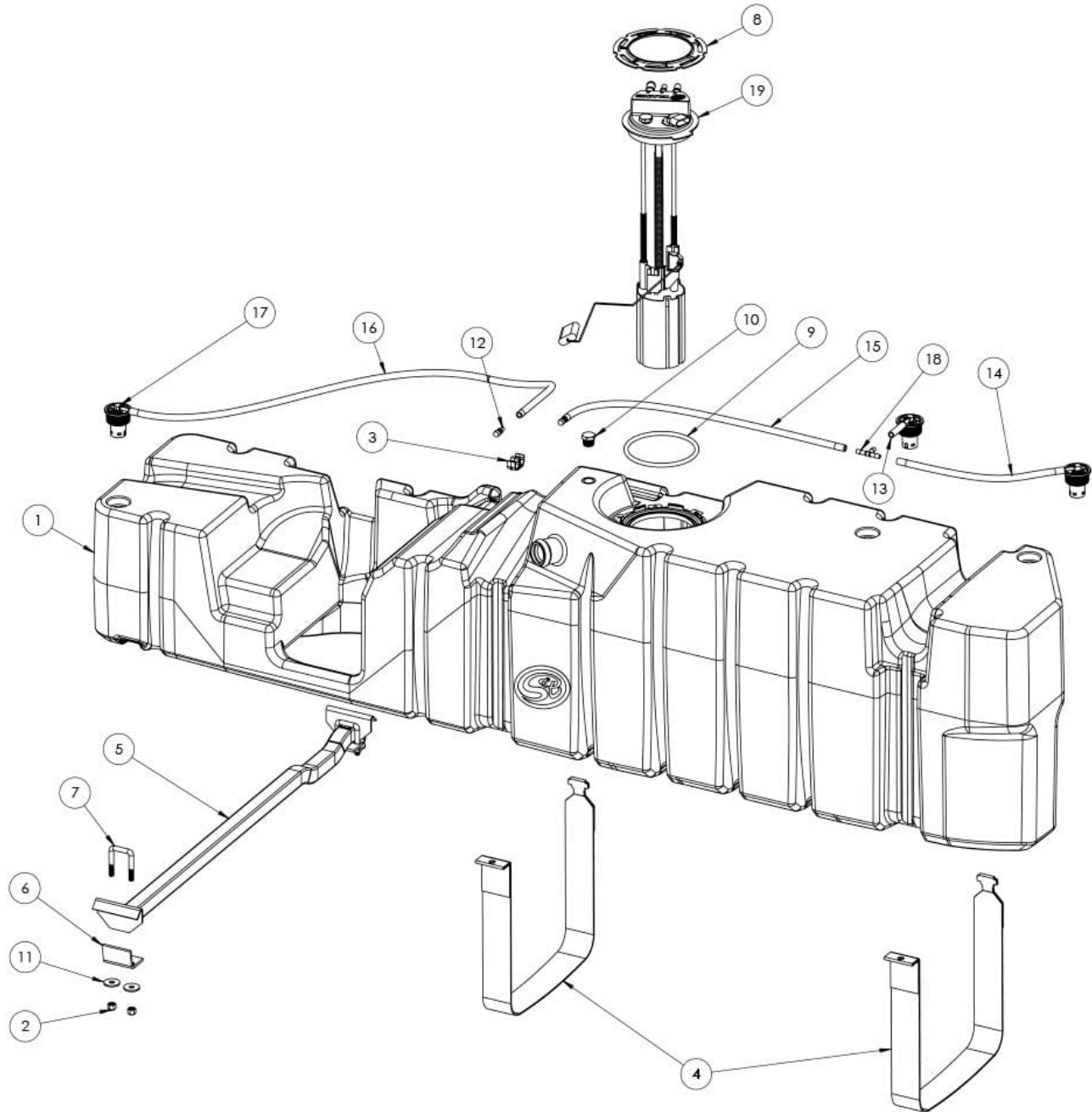
REQUIRED TOOLS

- Flathead Screwdriver
- 15mm Socket
- Ratchet
- 12" Driver Extension
- Fuel Line Disconnect Tool - 3/8" and 1/2"



Hi. Need any help?





ITEM NO.	PART NUMBER	DESCRIPTION	QTY.
1	10-1010	HIGH CAPACITY REPLACEMENT FUEL TANK	1
2	AI1498-00	NUT, HEX NYLOCK, 3/8-16, SS	4
3	TI1017-00	FUEL LINE HOLDER (2 LINES)	1
4	TI1026-00	FUEL TANK STRAP FOR 10-1006	2
5	TI1030-00	CROSS BAR TANK SUPPORT FOR 10-1006	1
6	TI1032-00	CROSSBAR CLIP C	2
7	TI1033-00	U-BOLD FOR CROSSBAR	2
8	TI1083-00	RETAINING/LOCKING RING	1
9	TI1094C-00	O-RING, 8mm CS, NBR, 50 DURO	1
10	TI1125-00	1/2"NPT PLUG	1
11	TI1130-00	STAINLESS STEEL WASHER FOR 38 SCREW	4
12	TI1141-00	CASE VENT-BREATHER	2
13	TI1149-02	5/16" FUEL HOSE 2"	1
14	TI1149-15	FUEL HOSE, 5/16" X 15", BK	1
15	TI1149-30	FUEL HOSE, 5/16" X 30", BK	1
16	TI1149-50	FUEL HOSE, 5/16" X 50", BK	1
17	TI1226-00	OE STYLE ROLLOVER VENT VALVE	3

Cookie Preferences

10	111354-00	TEE CONNECTOR FOR 3/16 ID HOSE	1
19	T11372-00	COMPLETED SENDING UNIT FOR 10-1010	1

STEP 1

Remove the filler hose from the tank or at the hose clamp connecting the hose to the metal filler neck

STEP 2

If you truck came equipped with a skid plate, remove it with a 13mm socket.

STEP 3

With fuel line disconnect tools, disconnect the fuel feed and return lines above the fuel cooler.

STEP 4

With a jack supporting the bottom of the tank. Use a 15mm socket to remove the front and rear straps.

STEP 5 FOR 10-1010 TANK

Remove the electrical connector by sliding out the grey tab and depressing the top bottom.

STEP 5 FOR 10-1013 TANK

Remove the electrical connector by releasing the tab on the side and pulling out on the connector.

STEP 6 FOR 10-1010

Remove the hose clamp securing the fuel vent hose to the sending unit barb.

STEP 7

Remove the OEM fuel tank. Place the included S&B o'ring into the o'ring groove and install the float onto the sending unit once the bucket is through the opening in the S&B Tank.

STEP 8

With the tab on the sending unit facing the arrow on the S&B Tank, install the included o'ring over the sending unit flange. Either use a dead blow/pry bar or fuel locking ring tool to hit the ring clockwise until it passes under the indentation in the ring on the S&B Tank.

STEP 8B

This is what the ring looks like in the locked position.

STEP 9

[Cookie Preferences](#)

r the feed and return
line from the OEM tank to the
S&B Tank

STEP 10 FOR 10-1006

Lift the tank into place. Throw the 5/16" ROV hoses over the frame rail to prevent them from getting pinched in between a crossmember when installing the tank. Reconnect the electrical connector and vent hose to the sending unit.

STEP 11

Route the hoses over the crossmembers and to the filler hose

[Cookie Preferences](#)

STEP 12

Reconnect the filler

STEP 13

Install the 2 S&B fuel tank straps.

STEP 14

Install the S&B support bar in front of the S&B Tank. The hooks should be over the inside lip of the frame rail. Then by pressing up on the tank and pushing on the bar, slide the bar under the S&B Tank until it is in the groove on the S&B Tank.

STEP 15

To secure the S&B support bar to the frame. Slide the u-bolts over the bar and slide as close to the frame as possible. Then install the clips, washers and lock nuts onto the u-bolt.

STEP 16 FINAL CHECKLIST

This final checklist is very important.

#1 Make sure all bolts and nuts are safely fastened and torqued.

#2 Ensure there is proper driveshaft clearance.

#3 Double check fuel line connections, the electrical connection as well as the vent and fill lines.

#4 Lastly, fill the tank full and check for any leaks. If you have any questions, call or text us at [909.675.1313](tel:909.675.1313)

Cookie Preferences