

1500 SIERRA TUBE FRONT BUMPER

2022-2025 GMC SIERRA

FBGC1-04



TOOLS REQUIRED

- T15 Torx Tool
- #4,#5, #6 Allen Tool
- 18mm,19mm, 21mm, 22mm wrenches
- 8mm, 10mm, 13mm, 15mm, 16mm, 18mm, 19mm, 21mm sockets
- (12) Water Resistant Heat Shrink Butt Connectors
- Electrical Tape
- Zip-ties
- cutting tool
- Wire Splicer Pliers/ Wire Crimps
- Flush cutters
- 6ft of 22 AWG Wire
- Trim Tool
- Safety Glasses

SKILL LEVEL

- Intermediate
 - 1 (you) to 2 persons
- Medium skill level required, you can easily install it by yourself however, additional help will be useful.

TIME REQUIRED

- 5 Hours
- Time to install this should only take about five hours.

WARNINGS/CAUTIONS BEFORE STARTING INSTALLATION

Before you install this kit – Read and understand all instructions, warnings, cautions, and notes contained in this installation instruction guide. Consult your vehicle owner’s manual for proper disconnection of electrical and lifting of vehicle if required for installation of this product.

This install may require some technical skills and knowledge of basic mechanical work. If you do not feel that you are capable of performing this install please take this product to a trained professional.

After reading this guide please contact us with any questions or concerns before installing product.
Customer Service: 855-680-9595

DV8 Offroad is not responsible for any bodily injury or harm to you or your vehicle as a result of an improper install.

Proper installation of this kit required knowledge of the factory recommended procedures for removal and installation of original equipment components. We recommend that the factory shop manual and any special tools needed to service your vehicle be on hand during the installation. Installation of this kit without proper knowledge of the factory recommended procedures may affect the performance of these components and the safety of the vehicle

- Always wear eye protection when operating power tools

Inspect all contents of this package to make sure product is not damaged and all installation hardware has been included. If parts are missing from kit, please be prepared to provide the following information

1. Name of purchase location
2. Bar Code on side of box
3. Date above bar code
4. Date inside box cover

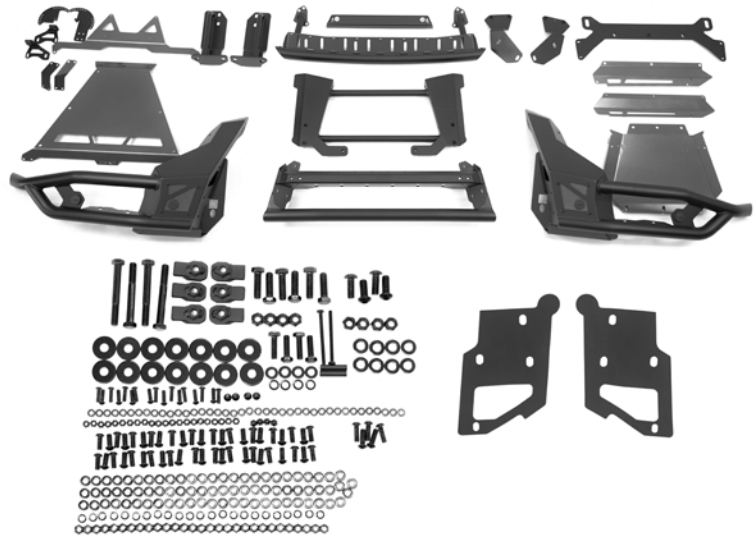


INSTALLATION MANUAL

Begin by unpacking all items and inspecting for missing pieces or damage. If you have any concerns, please contact the company the product was purchased from. Extra hardware may be included with the product.

HARDWARE INCLUDED

- | | |
|-----------------------------|------------------------------|
| (6) M12x40 Hex Bolts | (5) M8x25 Allen Head Bolts |
| (6) M12 Clip Nuts | (23) M8 Split Washers |
| (4) M12x95x30 Hex Bolts | (15) M6x20 Allen Head Bolts |
| (14) M12 Large Flat Washers | (14) M6 Nylon Lock Nuts |
| (4) M12 Nylon Lock Nuts | (28) M6 Flat Washers |
| (4) M10x35 Hex Bolts | (4) M6x14 Counter Sunk Bolts |
| (4) M10 Flat washers | (4) M6 Cap Nuts |
| (4) M10 Split Washers | (2) M6x20 Allen Head Bolts |
| (4) M12x30 Allen Head Bolts | (4) M6 Nylon Lock Nuts |
| (4) M12 Nylon Lock Nuts | (12) M6 Flat Washers |
| (8) M12 Flat Washers | (2) M6x80 Hex Bolts |
| (46) M8x20 Allen Head Bolts | (4) M6 Nuts |
| (29) M8 Nylon Lock Nuts | (2) ABS Spacers |
| (77) M8 Flat Washers | |



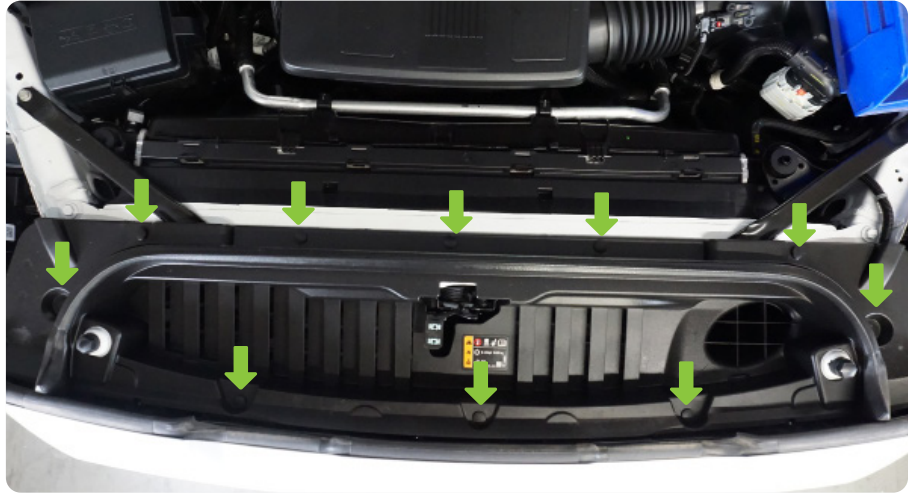
STEP 1 | Begin by opening the hood and removing the hood latch bolts using a T15 torx tool.



INSTALLATION MANUAL

STEP 2 | Use a trim tool to remove the clips that secure the intake scoop to the vehicle.

Remove the intake scoop and set it off to the side.

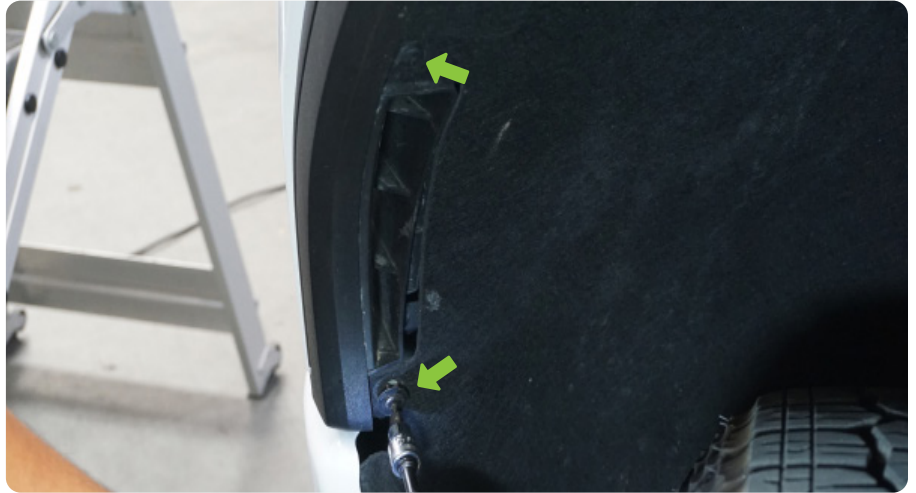


STEP 3 | Using a 10mm socket, remove the (4) bolts securing the top of the grille to the vehicle.



INSTALLATION MANUAL

STEP 4 | Moving to the wheel wells, use a T15 torx tool to remove the (2) bolts that secure the inner fender to the lower fascia on both sides.



STEP 5 | With a firm grip, carefully, pull the front of fender flare away from the vehicle body.

Note: Do not remove the fender flare completely.



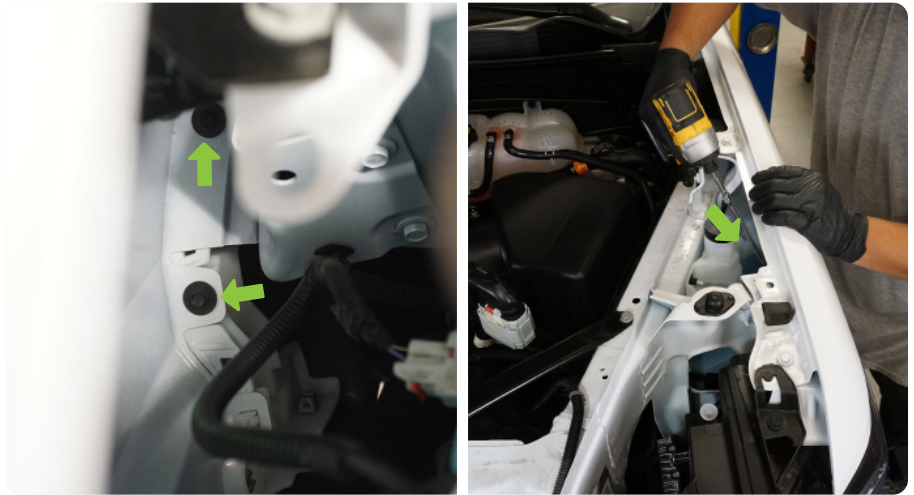
STEP 6 | Using a 8mm socket, remove the bolt that secure the lower fascia to the fender on each side.



INSTALLATION MANUAL

STEP 7 | Using an 12" extension and a 8mm socket. Loosen the (2) bolts that secure the lower fascia on each side.

NOTE: Only loosen these bolts 50%.



STEP 8 | Carefully start to pull the lower fascia away from the vehicle with a firm grip.

Use a trim tool to carefully pop the clips around the headlights.



INSTALLATION MANUAL



INSTALLATION MANUAL

STEP 9 | Use a 10mm socket to remove the (3) lower grille bolts.

Carefully remove the grille assembly, disconnect the front camera and front camera washer fluid hose if equipped.



STEP 10 | If your vehicle is equipped with an illuminated grille emblem, disconnect the (2) electrical plugs behind the driver side headlight.



INSTALLATION MANUAL

STEP 11 | Use a 10mm socket to remove the (9) bolts that secure the upper active air grille shutter.

Slightly pull the active air grille shutter away from the vehicle to disconnect the shutters electrical plug. Depress the push tab and separate the two electrical plugs.

Remove the shutter assembly and set it off to the side.

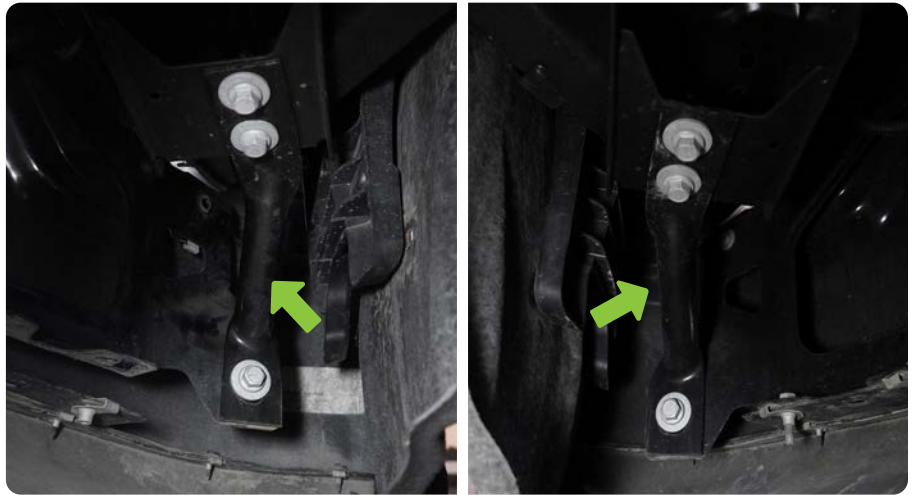


STEP 12 | Disconnect the bumpers wiring harness located below the passenger headlight. Pull back the red locking tab and depress the push tab to separate the two electrical plugs.



INSTALLATION MANUAL

STEP 13 | Moving under the front bumper, use a 15mm socket to remove the bumper supports from each side.



STEP 14 | Use an 18mm socket to remove the (2) lower bumper mounting bolts on the inside of the frame rails.



STEP 15 | Use a 10mm socket to remove the (4) bolts securing the bumpers lower valance .



INSTALLATION MANUAL

STEP 16 | Use a 18mm socket to remove the (2) upper mounting bolts.

Remove the bumper and set it off to the side on a protect surface.



STEP 17 | Use a 15mm socket to remove the (6) bolts that secure the factory bumper mounting plate to the frame rails.

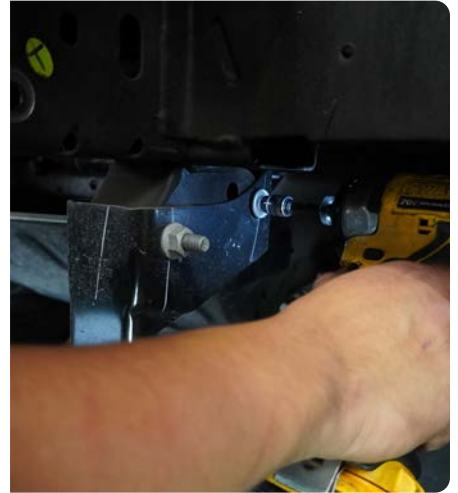
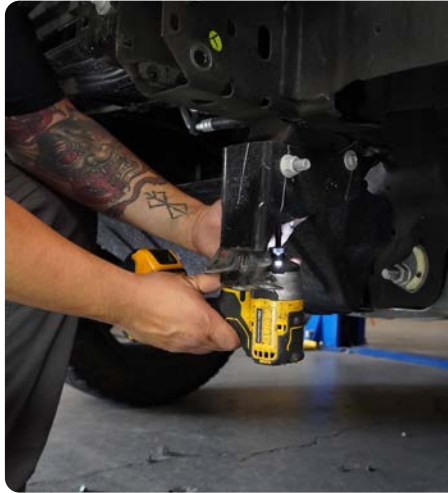


STEP 18 | Use an 18mm socket and an adjustable wrench to remove the front recovery hooks.



INSTALLATION MANUAL

STEP 19 | Use an 18mm & 10mm socket to remove the lower crash bars.



STEP 20 | Use a 10mm socket to remove both front inner fender supports.



INSTALLATION MANUAL

STEP 21 | Using a 15mm socket, remove the four bolts shown to remove the skid plate.



STEP 22 | Lay the factory front bumper face down on a moving blanket or covered work bench.

Use a 13mm socket to remove the (7) bolts securing the bumper supports.



STEP 23 | Using a trim tool, remove the clips holding the harness to the bumper.

Remove the sensors from the sensor bezels by gently pulling the outside tabs apart and pull the sensor back away from the face of the bumper





STEP 24 | With the harness and sensors removed, push in the two retainer tabs on the bezels and push them out the front of the bumper.

Note: Keep note of bezel location to reuse on new bumper.



INSTALLATION MANUAL

STEP 25 | With the factory bumper removed we can not start assembly of the DV8 Tube front bumper.

Place the provided ABS (foam) spacers on the bumpers center section



STEP 26 | Loosely mount the wing to the bumpers center section using a #5 allen tool and 13mm wrench using the M8x20 hardware provided.

NOTE: To properly fit all bumper pieces leave all hardware loose until the end.



INSTALLATION MANUAL



STEP 27 | With the wings mounted flip the bumper as shown.



INSTALLATION MANUAL

STEP 28 | Mount the skid plate with DV8 logo to the bumper. Using a #5 allen tool with the provided M8x20mm for the outer mounting bolt (Red arrow) and M8X25mm for the inner mounting holes (Yellow arrow). Use (1) M8 flat washer and (1) M8 split washer per M8 bolt.



INSTALLATION MANUAL

STEP 29 | Loosely mount the skid plates wings using a #5 allen tool, 13mm wrench and the provided M8x20mm hardware.

Use (1) M8 flat washer per M8 bolt and for each nylon lock nut.

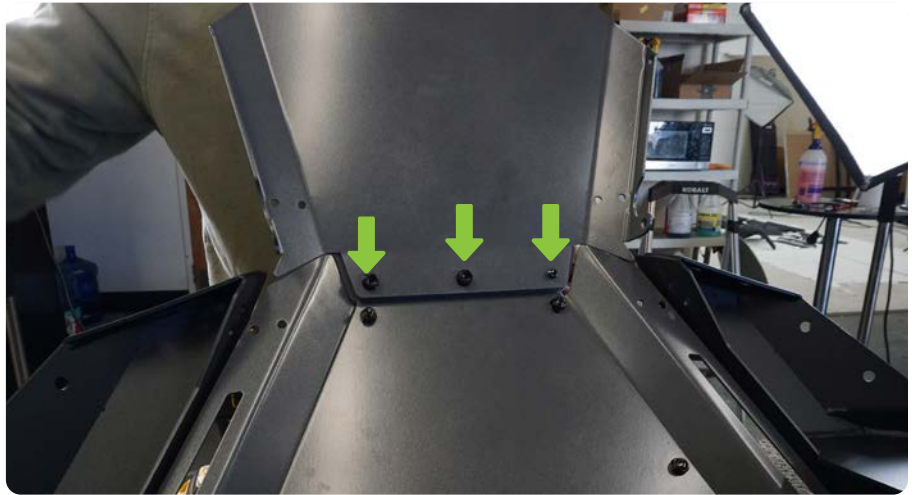


STEP 30 | Loosely mount the lower skid plate using a #5 allen tool and the provided M8x20mm hardware.

Use (1) M8 Flat washer per M8 bolt. Use (1) M8 flat washer per M8 nylon lock nut.

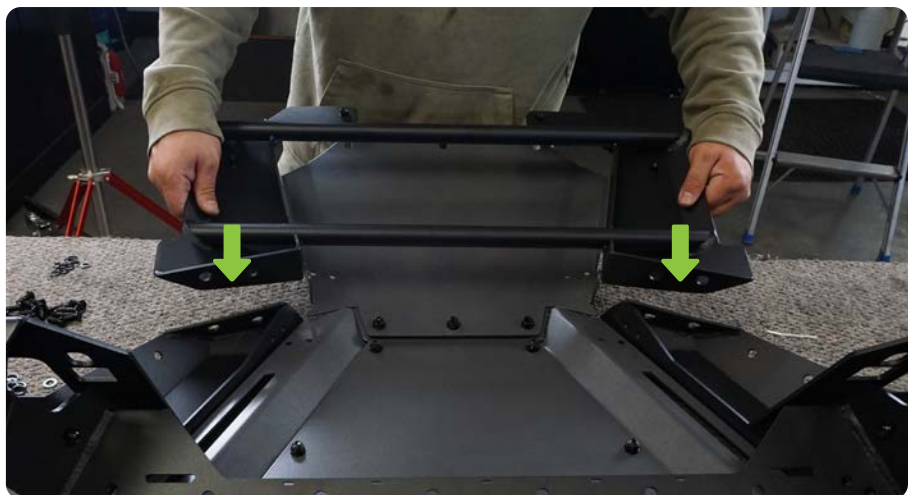


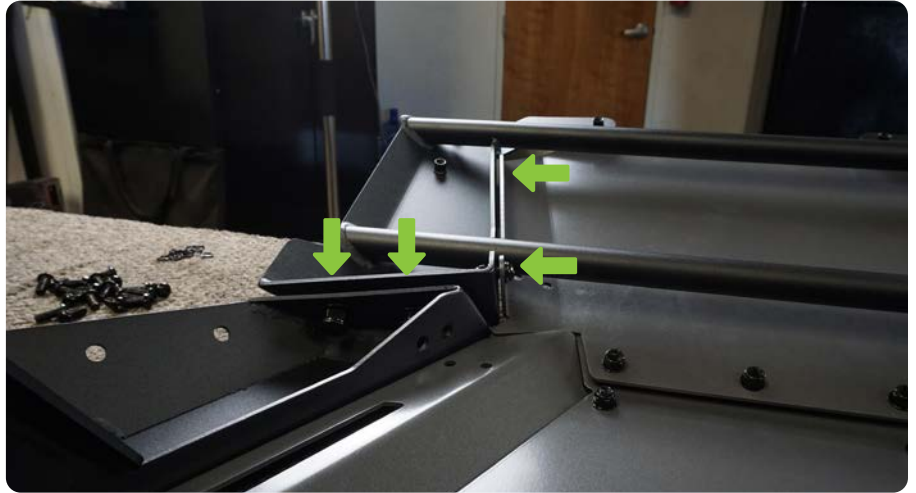
INSTALLATION MANUAL



STEP 31 | Loosely mount the lower skid plate frame to the bumper wings/lower skid plate using a #5 allen tool, 13mm wrench and the provided M8x20mm hardware.

Use (1) M8 flat washer per M8 bolt. Use (1) M8 washer per M8 nylon lock nut.



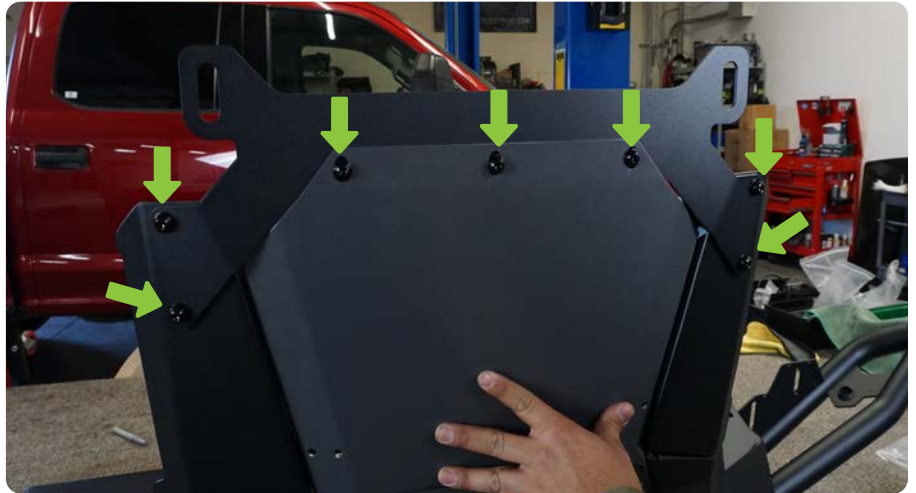


STEP 32 | Loosely mount the front cross-member mounting bracket to the bumper using a #5 allen tool and the provided M8x20 hardware.

Use (1) M8 flat washer and (1) M8 split washer per M8 bolt.

*****If you vehicle is equipped with a 4-6 inch cross-member lift, do not install this skid plate to cross-member bracket.*****





STEP 33 | Loosely mount the skid plate support brackets using a #4 allen tool and 10mm wrench, with the provided M6x20 hardware.

Use (1) M6 flat washer per M6 bolt. Use (1) M6 flat washer per M6 nylon lock nut.





STEP 34 | Loosely mount the center support bar as shown using a #5 allen tool and 13mm wrench with the provided M8x20 hardware.

Use (1) M8 flat washer per M8 bolt. Use (1) M8 flat washer per M8 nylon lock nut.



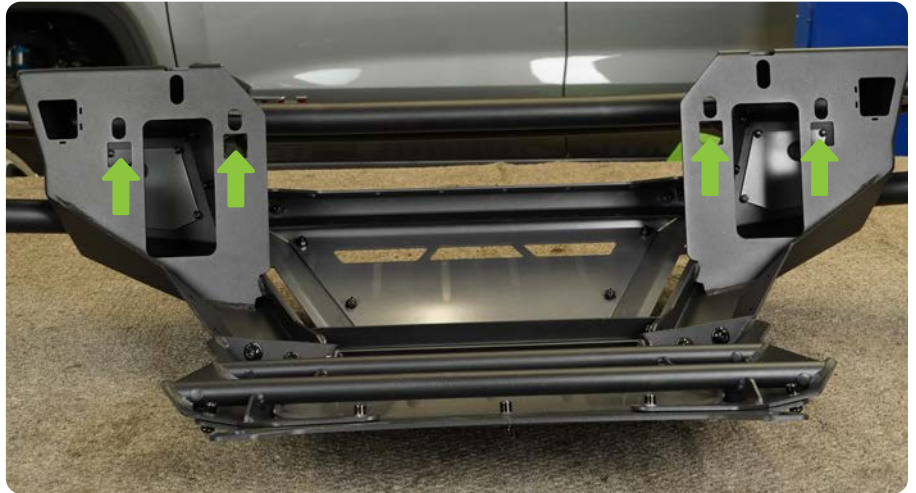
STEP 35 | Secure all bumper hardware that was left loose.



INSTALLATION MANUAL



STEP 36 | Install the provided M12 clip nuts onto the bumper



STEP 37 | If you are planning on running pod lights, mount your pod light now using the hardware provided with the light



INSTALLATION MANUAL

STEP 38 | If you are planning to run the optional push/light bar, install the push/light bar at this time using the provided M6 hardware and an #4 allen tool.

Use (1) M6 split washer and (1) M6 flat washer per bolt.



STEP 39 | If equipped, route the driver side parking sensor through the bumper and over to the driver side sensor bezel hole in the bumper.





STEP 40 | Install the sensor bezel previously removed, into the cutout on the DV8 bumper.



INSTALLATION MANUAL

STEP 41 | Install the sensor into the bezel. Ensure the sensor is properly seated and the sensor ring is not pinched.

Note: It is vital that the sensor are properly installed to ensure proper function. Once the bumper is mounted access to the sensors is limited.



INSTALLATION MANUAL

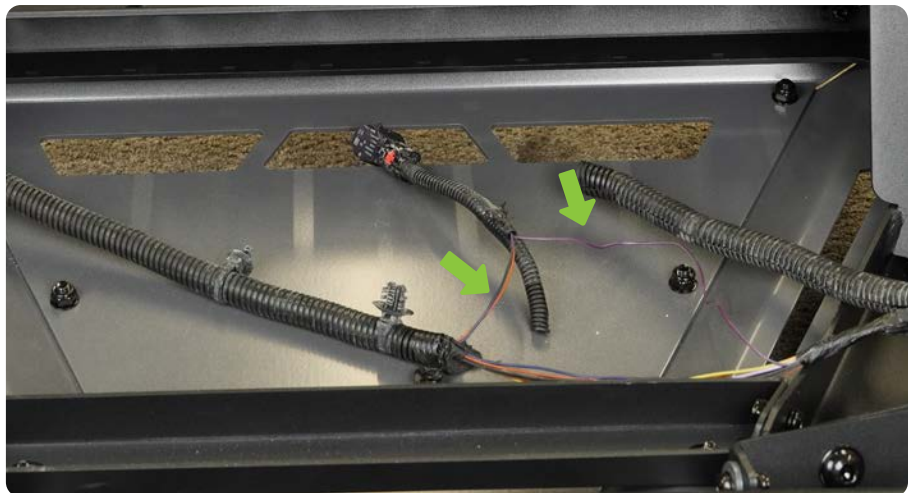
STEP 42 | Continue installing the sensor bezels and sensor into the bumper.



STEP 43 | The passenger side inner parking sensor wiring harness will need to be lengthened.

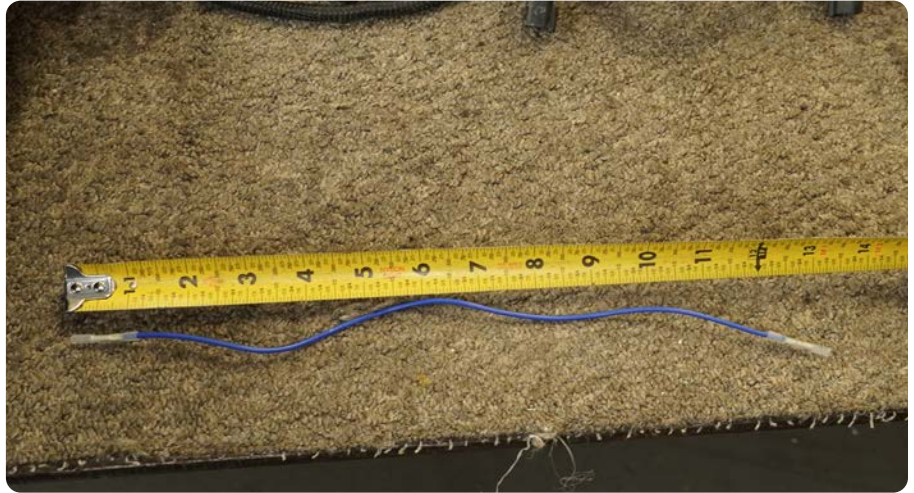
Unravel the wiring loom to expose the parking sensors 3 wires. On our wiring harness we have Orange, Black and Purple wires, your harness may differ.

*****Do not cut any wires at this time*****



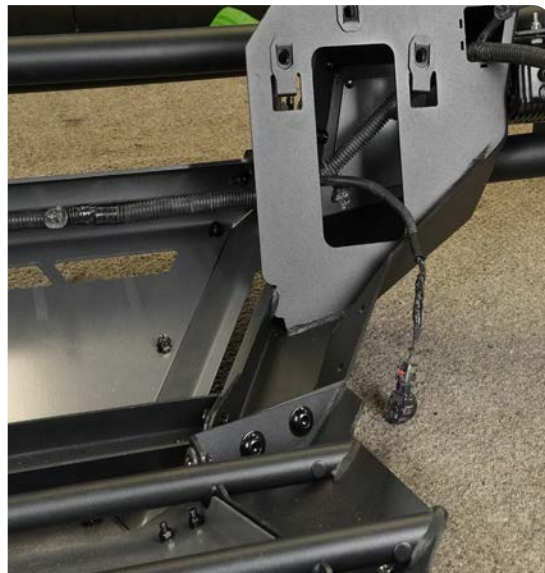
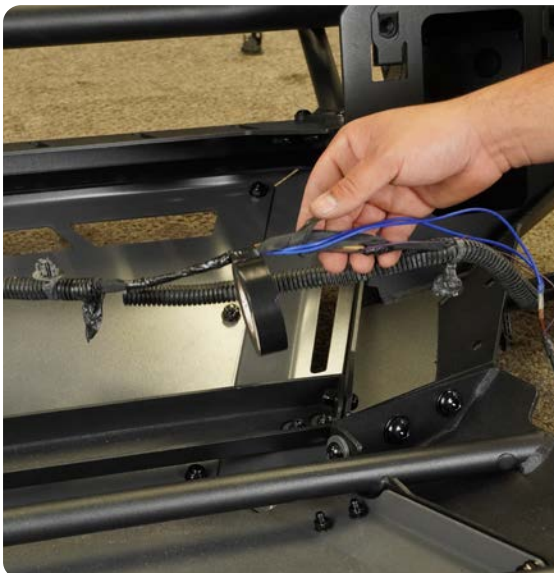
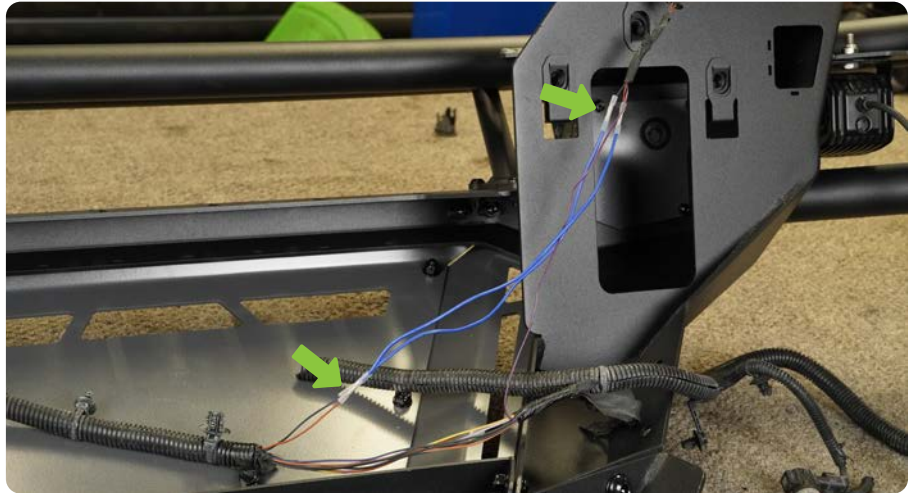
INSTALLATION MANUAL

STEP 44 | Using water resistant connectors and 22 AWG wire make five lengths of wire as shown.



STEP 45 | Cut and extend the passenger side inner parking sensors Black and Orange wires as shown.

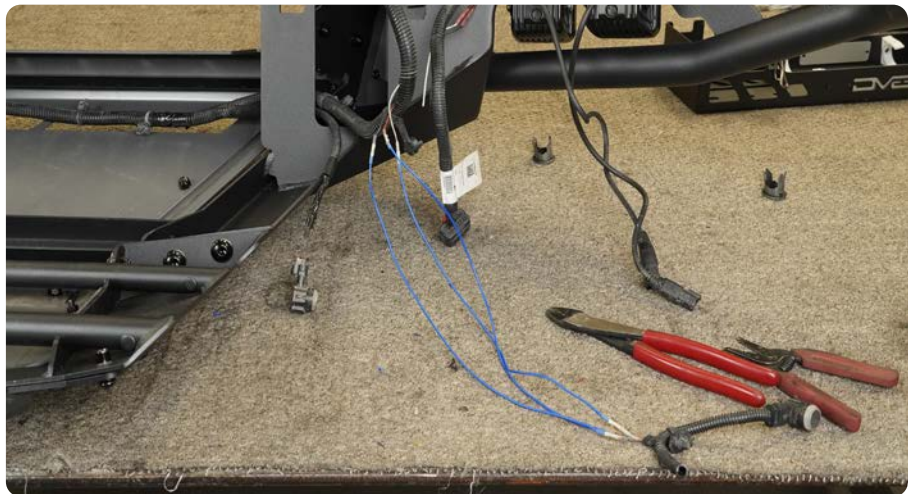
Re-wrap the lengthened parking sensor wires using electrical tape. Reuse the factory plastic wire loom to protect the wires.



INSTALLATION MANUAL

STEP 46 | Using the three additional lengths of wire made previously on step 44, extend the passenger side outer sensor.

Re-wrap the lengthened parking sensor wires using electrical tape. Reuse the factory plastic wire loom to protect the wires



INSTALLATION MANUAL

STEP 47 | With the parking sensor harness lengthened, install the passenger side inner and outer parking sensors into the factory sensor bezels. Ensure the sensor is properly seated and the sensor ring is not pinched.

Note: It is vital that the sensor are properly installed to ensure proper function. Once the bumper is mounted access to the sensors is limited.



STEP 48 | Use zip-ties to secure the loose wiring harness to the zip-tie tabs on the pod light brackets.





STEP 49 | If you are planning to run a light bar in the center of the bumper, mount the provided light bar brackets to your light bar using the hardware provided with the light.



STEP 50 | Mount the light bar within the bumper's center section using a #4 allen tool and 10mm wrench with the provided M6 hardware.

Use (1) M6 flat washer per M6 bolt. Use (1) M6 flat washer per M6 nylon lock nut.





STEP 51 | If you wish to run light along the push bar, install your lights at this time using the hardware included with the lights.

We chose the DV8 7 inch Halo Elite Round Light with accent halo. Part# BE7RW108W-H

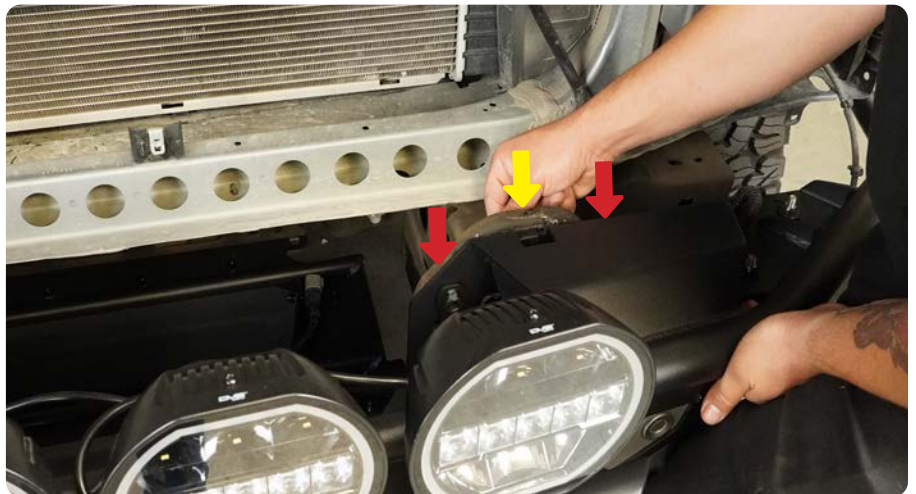


INSTALLATION MANUAL

STEP 52 | With assistance mount the DV8 Tube front bumper to the vehicle.

Secure the bumper to the frame rails using a 18mm socket and 19mm wrench with the provided M12x40 hardware.

The side mounting points will use the previously installed M12 nut clips (Red arrow), the upper center mounting point will be through bolted (Yellow arrow).



INSTALLATION MANUAL

STEP 53 | Using a box cutter, cut the inner fender just below the inner fender support mounting bracket



INSTALLATION MANUAL

STEP 54 | To secure the inner fender, use a pick to poke a hole through the inner fender, using the factory welded nut as a guide.

Use a factory 10mm bolt previously removed in step 20, from the plastic inner fender support, to secure the inner fender.



INSTALLATION MANUAL

STEP 55 | Mount the lower bumper support to the wings using a #5 allen tool and 13mm wrench with the provided M8 hardware.

Use (1) M8 split washer and (1) M8 flat washer for each M8 bolt.

The lower bumper supports are marked "D" for Driver side and "P" for Passenger side



STEP 56 | Loosely mount the provided recovery point to the frame rail crash-bar using a 18mm socket and 19mm wrench with the provided M12x95x30 hex head hardware.

Thread the recovery point, through the lower bumper support and through the frame rail crash bar.

Use (1) M12 flat washer on each M12 bolt.
Use (1) M12 flat washer on each M12 nylon lock nut.



INSTALLATION MANUAL

STEP 57 | Loosely mount the recovery point to the frame rails side crash-bar using a 16mm socket with the provided M10x35 hex head hardware.

Use (1) M10 split washer and (1) M10 flat washer per bolt.

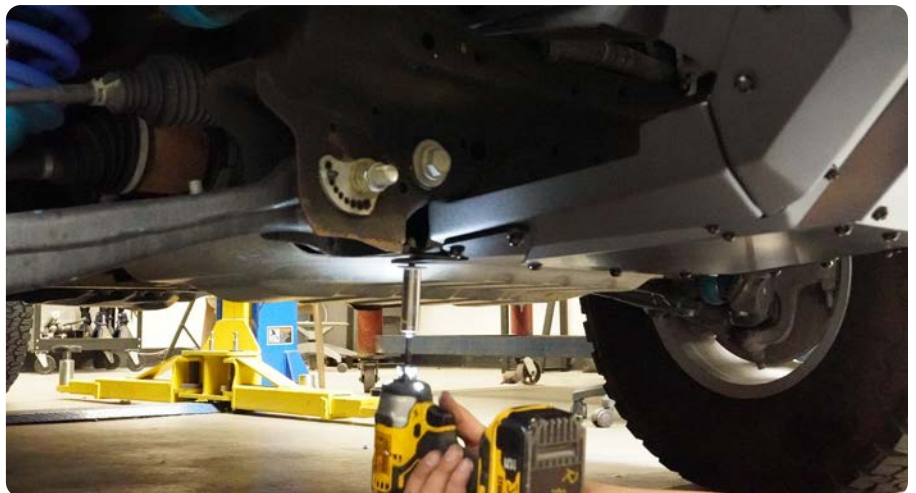


STEP 58 | Using a 18mm socket and 19mm wrench, secure the recovery point to the lower bumper support/ frame rail crash-bar.

Secure the recovery points M10 hardware using a 16mm socket.



STEP 59 | Using the factory skid plate to cross-member bolts, secure the DV8 skid plate to the cross member.



INSTALLATION MANUAL

STEP 60 | Reconnect the bumper wiring harness to the factory harness below the passenger side headlight.



STEP 61 | Ensure all light wiring is tucked away from the top of the bumper.

Route any push bar light wiring harness through the bumper center section.



STEP 62 | Reinstall the vehicles lower shutter system, grille assembly and lower in reverse order they were removed.



INSTALLATION MANUAL

STEP 63 | Double check that all hardware is secure.

Congratulations, installation of the DV8 GMC Sierra Tube front bumper is now complete.

