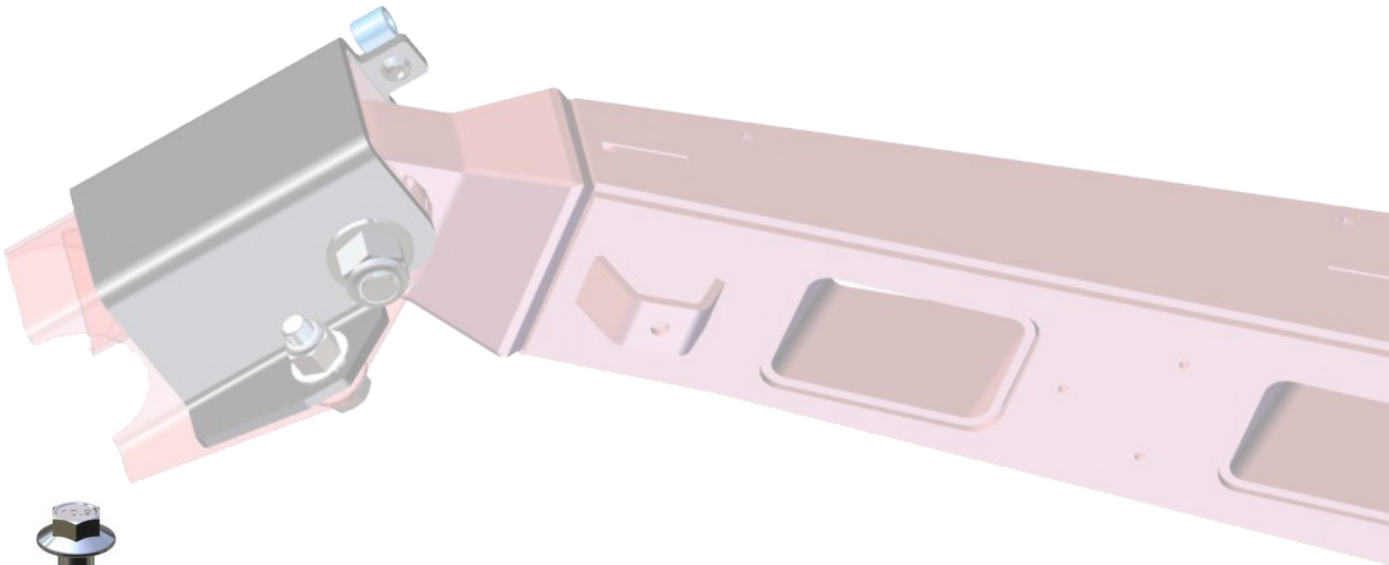
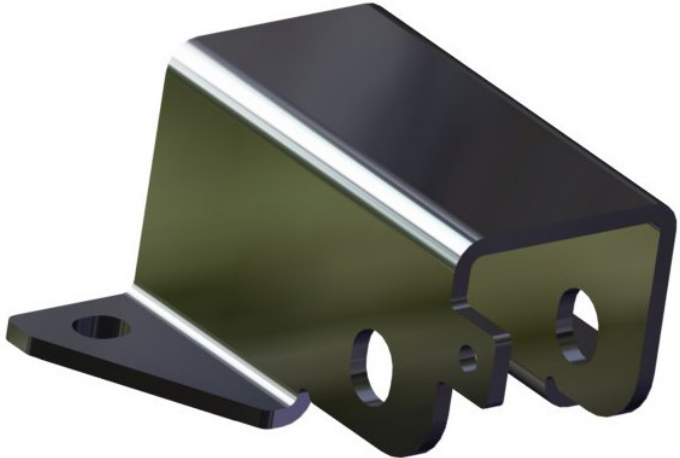
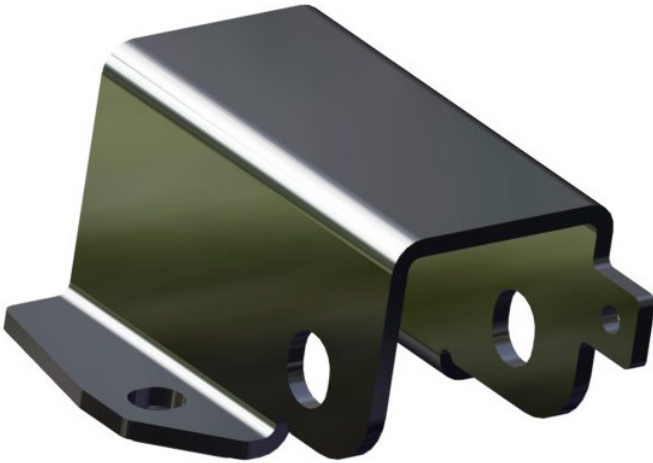


**INSTALLATION INSTRUCTIONS**

**RFS-CA-MAVR-001: Rear Frame Stiffener**

- Ⓢ Please look through and read these instructions BEFORE starting so you understand what processes you'll be doing, and possible extra tools you may need.
- Ⓢ Do Not discard product packaging until installation is complete and functioning properly.



**M14x80  
Hex  
Flanged  
(2pcs)**



**M14  
Flanged  
Nylock  
(2pcs)**



**M10x30  
Hex  
Flanged  
(4pcs)**



**M10  
Flanged  
Nylock  
(4pcs)**



**1/4"  
Brake Line  
Clamp  
(2pcs)**



**M6x16  
Button  
FT Head  
(2pcs)**



**M6  
Nylock  
Nut  
(2pcs)**

1. The first thing you need to do is **Remove** the **Pop-Rivet** from the frame clevis that holds the **Factory Brake Line Clip** as shown in **Fig.1a-b**. Then **Remove Factory Bolt** as shown in **Fig.1c-d**. (can drop this end of arm down out of the way if needed).

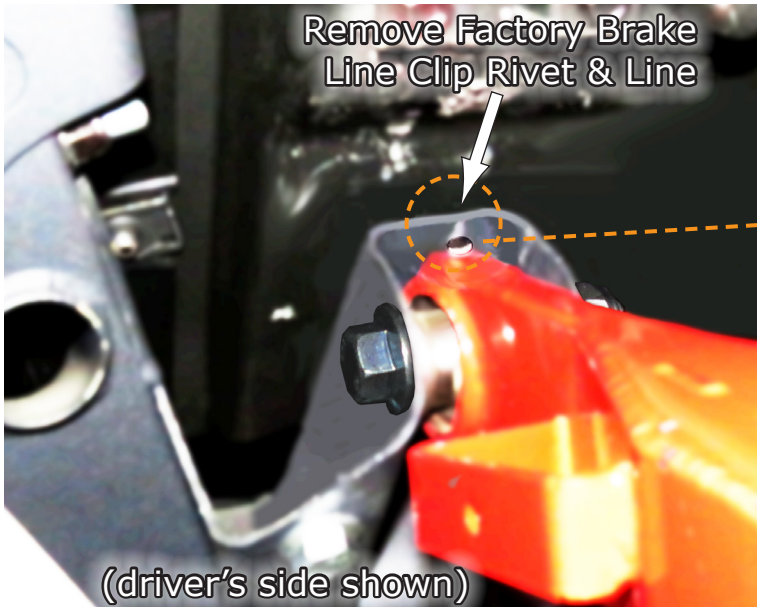


Fig.1a

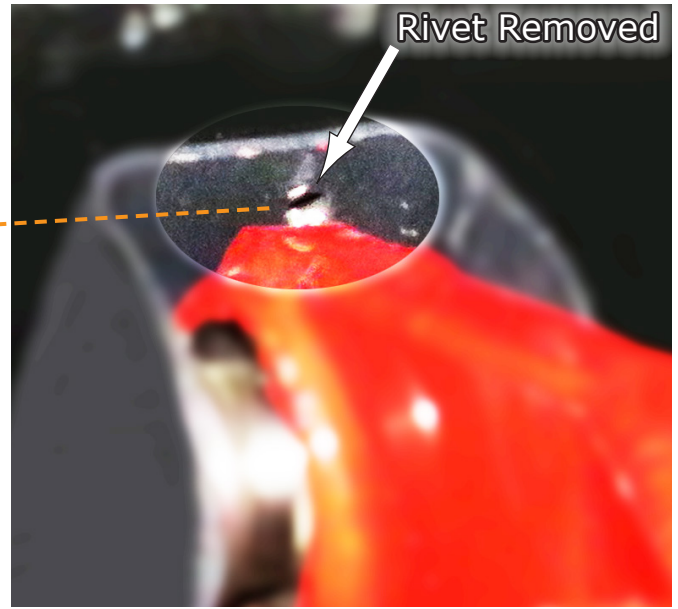


Fig.1b

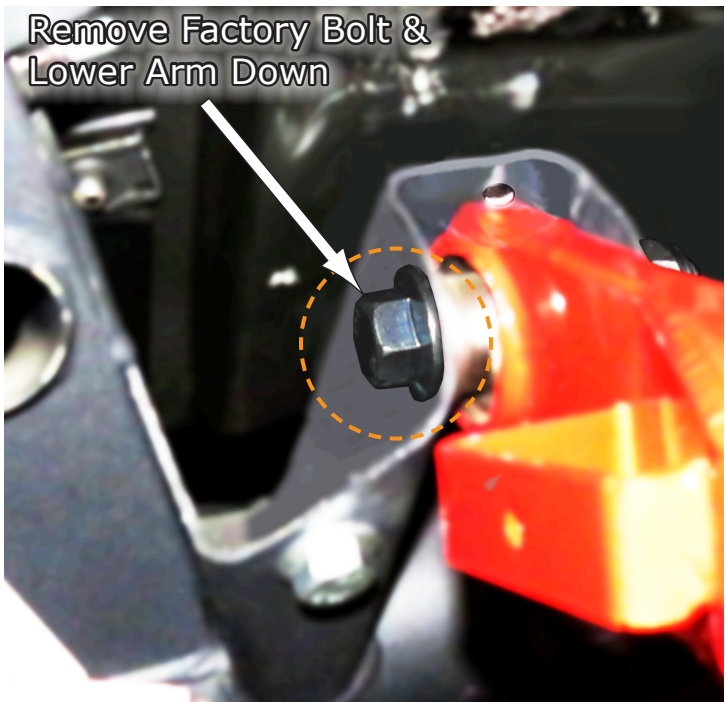


Fig.1c



Fig.1d

2.Next, take the **Driver's Side Bracket Assembly** and **Slide Over** the vehicle **Frame Clevis** where you removed the rivet from as shown in **Fig.2a-b**. Now **Install** the **M14x80 Hex Flanged Bolt & M14 Nylock Nut** as shown in **Fig.2c**, but keep loose until all hardware is installed. **Fig.2d** shows how the Bracket goes on the frame clevis along with the **New Brake Line Clip** and other **New Hardware** provided in your kit.

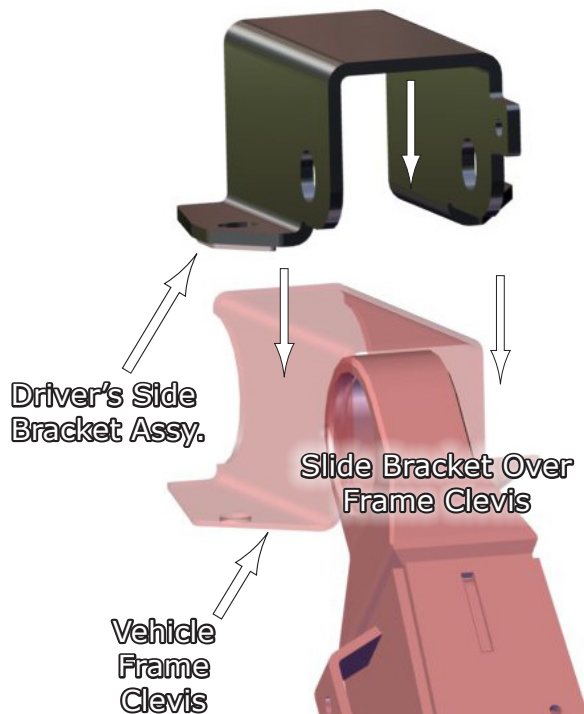


Fig.2a

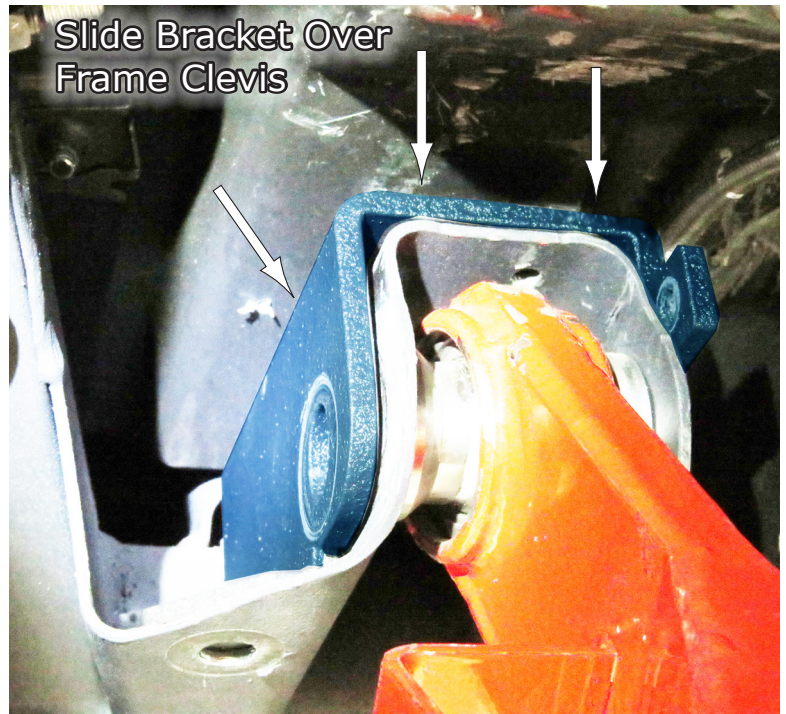


Fig.2b

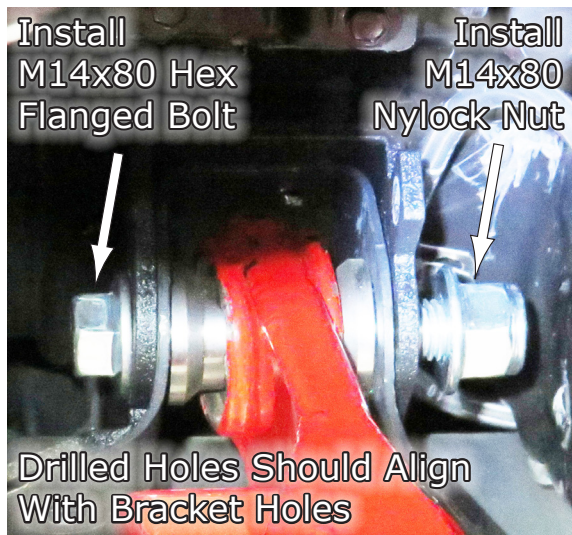


Fig.2c

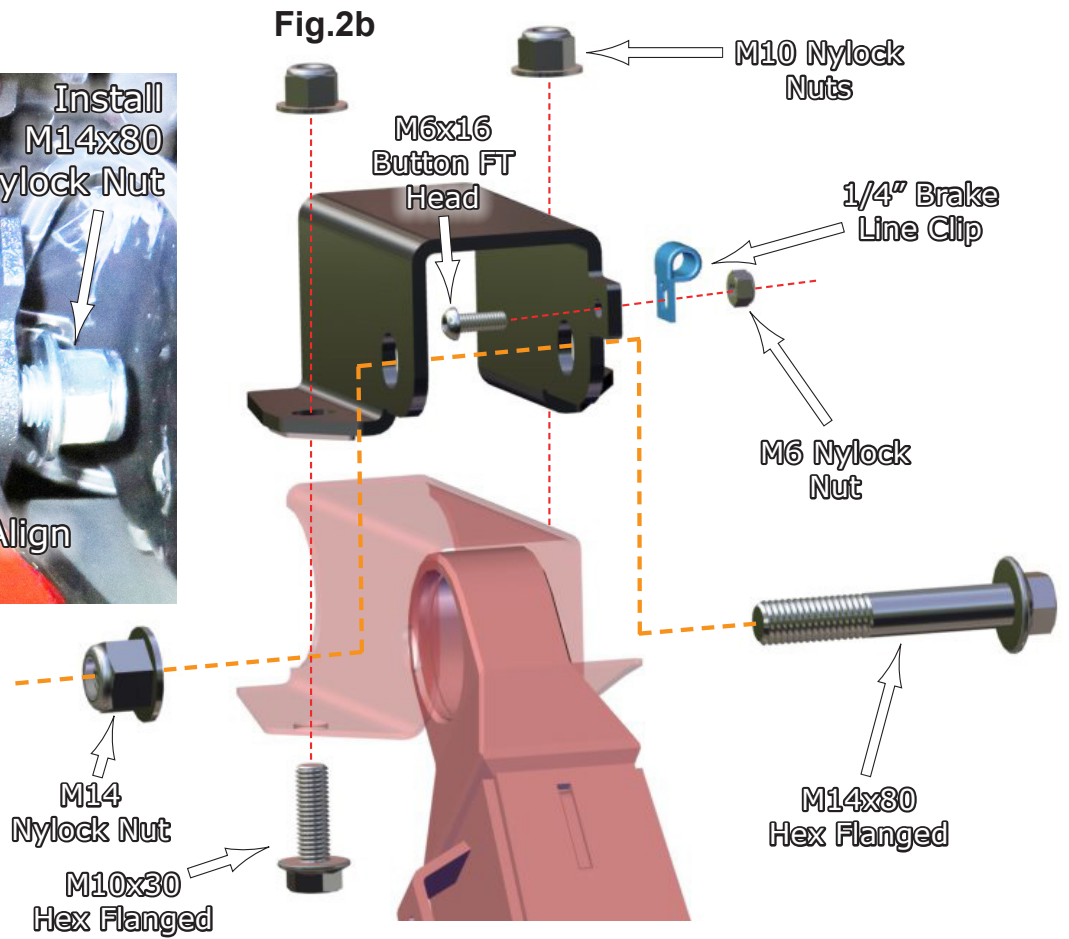
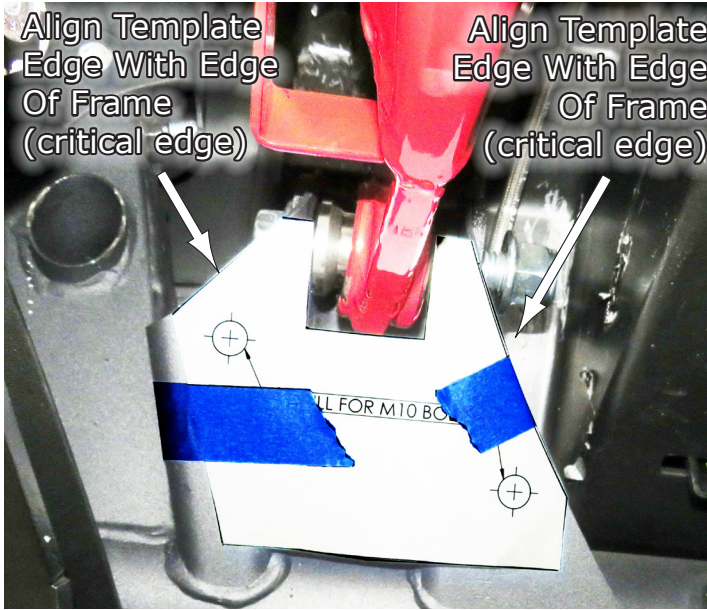


Fig.2d

3. Next, you will now need to **Cut the Paper Templates** out (located on page 5) and **Drill Two (2) Holes** in the **Frame Clevis** where the Frame Stiffener will bolt to the frame. **Fig.3a** shows **Aligning the Sides Of the Template** to the frame which is **Critical For Alignment**. Then **Drill the Two Holes Thru** for M10 bolts shown in **Fig.3b-c**.

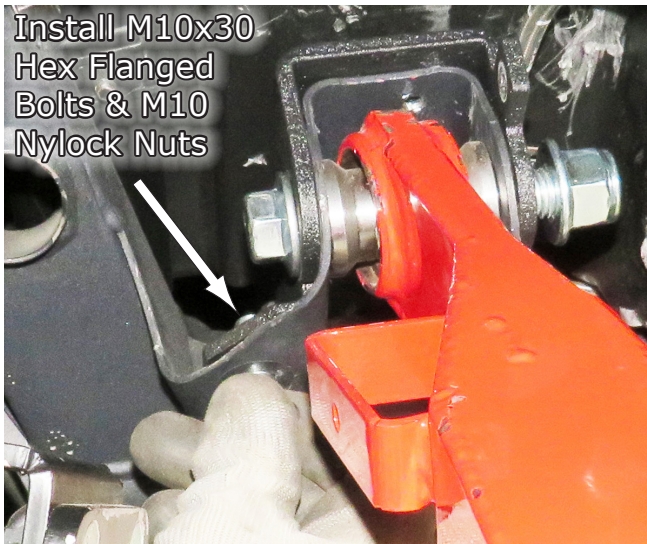


**Fig.3a**

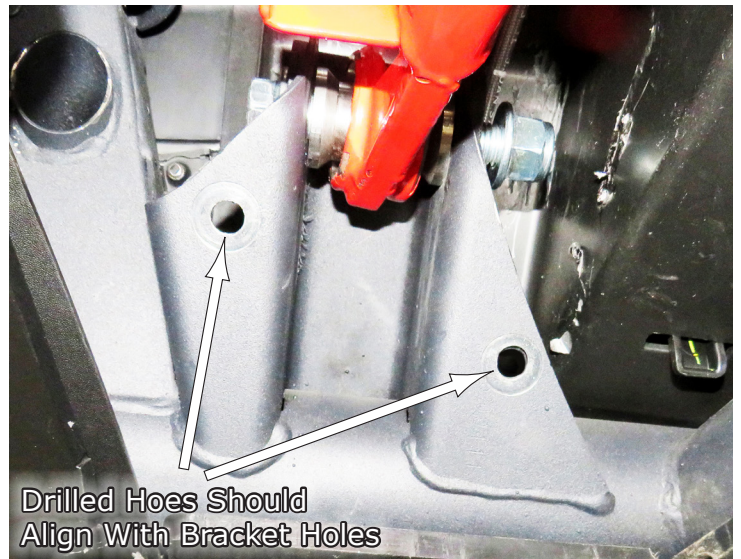


**Fig.3b**

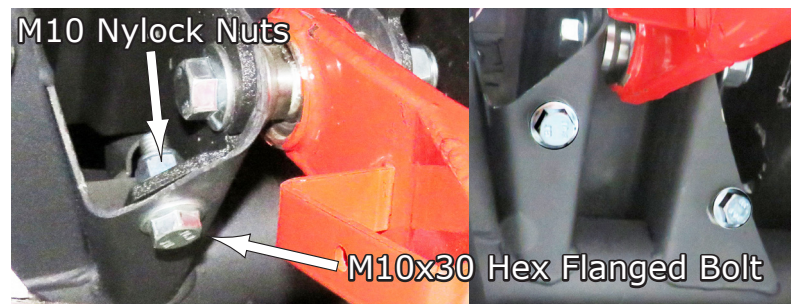
4. Now **Install the M10x30 Hex Flanged Bolts & M10 Nylock Nuts** provided in your kit. Once these bolts are in place, then tighten these and the Arm Bolt down secure. See **Fig.4a-b**.



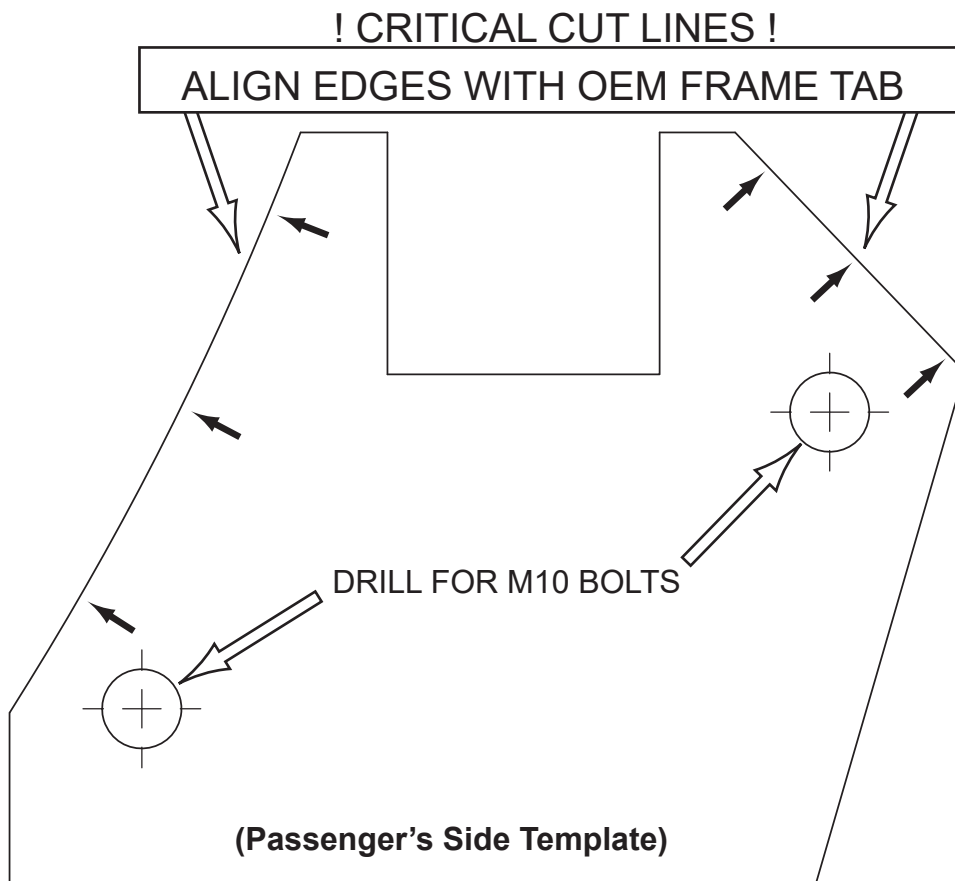
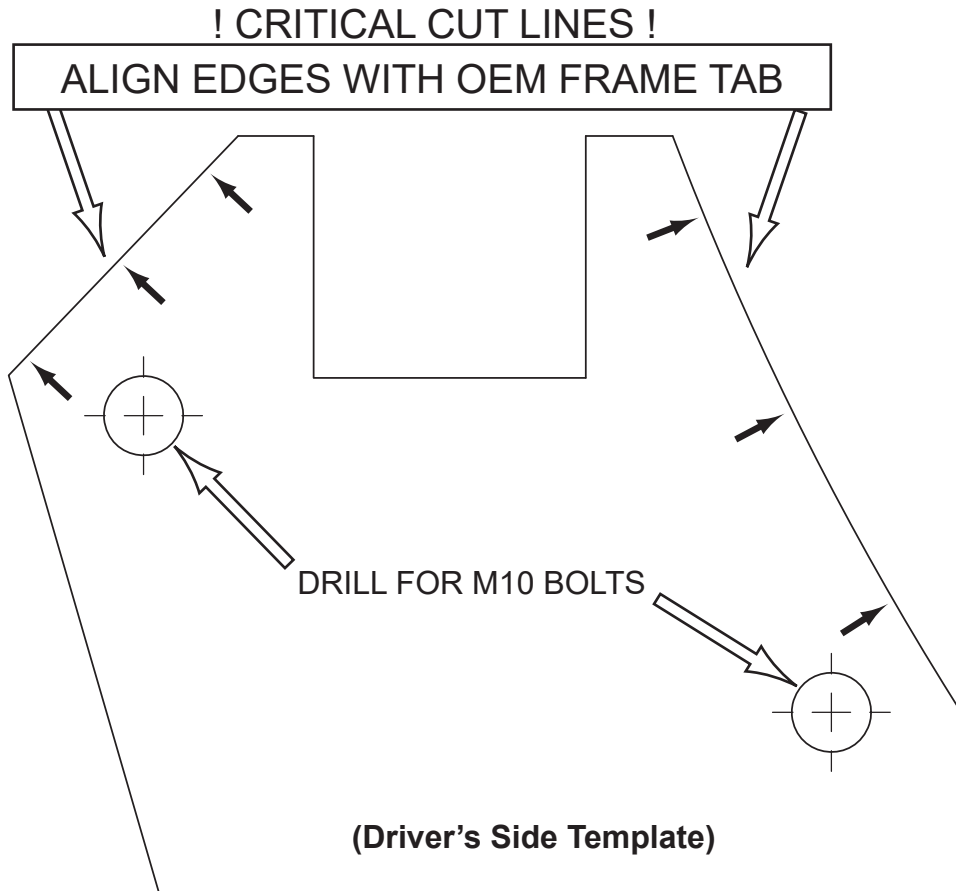
**Fig.4a**



**Fig.3c**



**Fig.4b**



5. The last thing is to **Install the 1/4" Brake Line Clamp** and Hardware. Install the Clamp using the **M6x16 Button FT Screw** and **M6 Nylock Nut** all provided in your kit, and tighten secure.

Repeat these same procedures for the opposite side.



Fig.5a

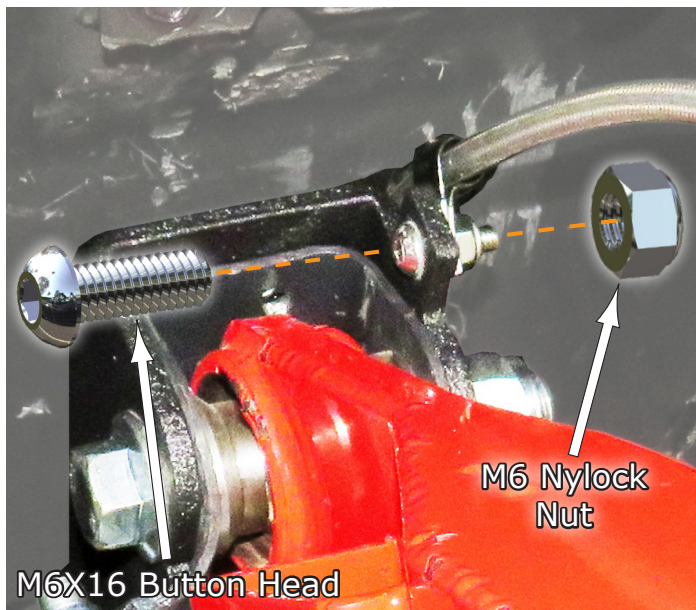


Fig.5b

**Liability Statement**  
 SuperATV's® products are designed to best fit user's ATV/UTV under stock conditions. Adding, modifying, or fabricating any factory or aftermarket parts will void any warranty provided by SuperATV® and is not recommended. SuperATV's® products could interfere with other aftermarket accessories. If user has aftermarket products on machine, contact SuperATV® to verify that they will work together.

Although SuperATV® has thousands of satisfied customers, user should be aware that installing lift kits, long travel, or suspension kits, tires, etc. will change the ride of machine and may increase maintenance and part wear. Operating any off-road machine while, or after, consuming alcohol and/or drugs increases risk of bodily harm or death. No warranty or representation is made as to this product's ability to protect user from severe injury or death. SuperATV® urges operators and occupants to wear a helmet and appropriate riding gear at all times.

By purchasing and installing SuperATV® products, user agrees that should damages occur, SuperATV® will not be held responsible for loss of time, use, labor fees, replacement parts, or freight charges. SuperATV®, nor any 3rd party, will not be held responsible for any direct, indirect, incidental, special, or consequential damages that result from any product purchased from SuperATV®. The total liability of seller to user for all damages, losses, and causes of action, if any, shall not exceed the total purchase price paid for the product that gave rise to the claim.

SuperATV® will warranty only parts provided by SuperATV®. Any damage or problems with OEM housings, bearings, seals, or other manufacturers' products will not be covered by SuperATV®. SuperATV® parts and products are not warranted if item was not installed properly, misused, or modified.

Installing, adding, modifying, or fabricating any factory or aftermarket product to your ATV/UTV may violate certain local, state, and federal laws. Be advised that laws vary depending on town, city, county, state, etc. Use of certain products on public streets, roads, or highways may be in violation law. The Buyer is solely and exclusively legally and personally responsible for any violation of the law by the installation or use of the product. You must abide by all local, state, and federal laws, including but not limited to vehicle safety, traffic laws, and ordinances. It is your responsibility to know the laws and how they apply to you.

The Buyer is responsible to fully understand the capability and limitations of his/her vehicle according to manufacturer specifications, warnings and instructions and agrees to hold SuperATV® harmless from any damage resulting from failure to adhere to such specifications, warnings and/ or instructions. The Buyer is also responsible to obey all applicable federal, state, and local laws and ordinances when operating his/her vehicle while using this product, and the Buyer agrees to hold SuperATV® harmless from any violation thereof.

If you have any problems/questions on this kit, contact us by email at [superatv.com](mailto:sales@superatv.com).

*Thank You  
 For Choosing*

**Need help with your installation?**

✉ [sales@superatv.com](mailto:sales@superatv.com) 🖥 [www.superatv.com](http://www.superatv.com)

☎ 1-855-743-3427 🕒 8:00am - 9:00pm EST M-Th  
 8:00am - 7:00pm EST Friday  
 9:00am - 2:00pm EST Saturday



**Like SuperATV on Facebook to keep up to date on new products!**