



INSTALLATION INSTRUCTIONS

D-CO CASE MOUNTING KIT CARGOGLIDE

TOOLS REQUIRED

drill
1/4" and 11/32" drill bits
hammer
5/32" hex key
Blue Loctite 242
torque wrench (in-lb)



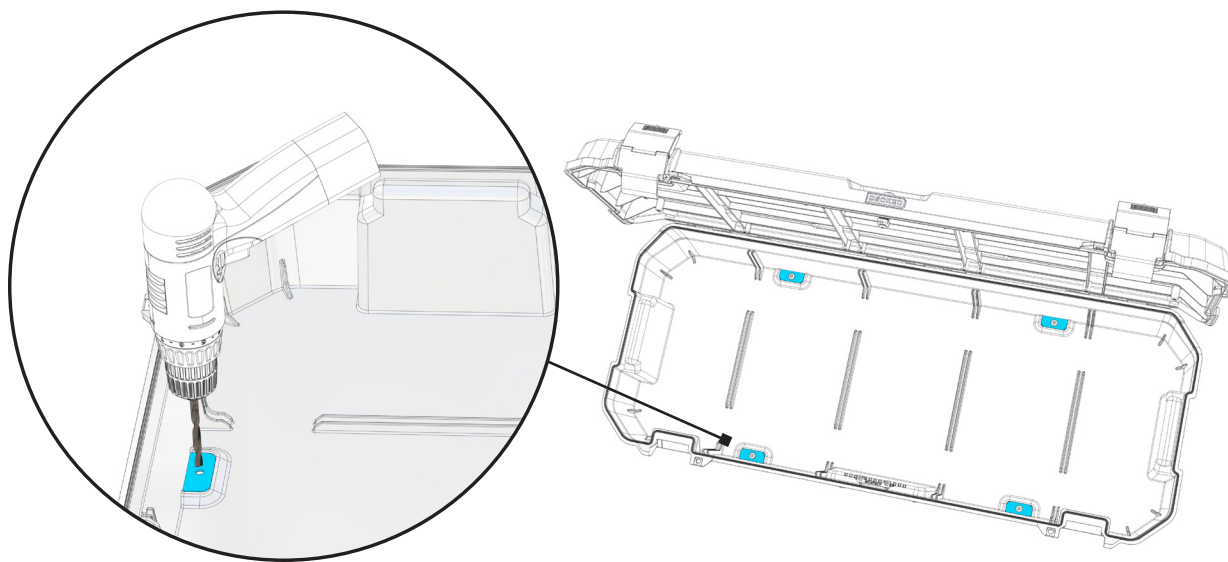
WARNING



- It is the responsibility of the installer to confirm the D-Co Case is anchored to the CargoGlide in four locations per the instructions.
- Fasteners should be checked periodically and retightened if necessary. Torque to recommended specs only.
- Do not install on top of rubber mats or any other object.
- Max kinetic payload is 50 lbs. Do not exceed 50 lbs.

STEP 1 - Prepare the D-Co Case for mounting.

- Place a mounting plate in each depression on the tub floor.
- Use the plate as a template to drill a 1/4" hole through the bottom of the D-Co Case tub at the four locations.
- Remove the mounting plates for now.



D-CO CASE MOUNTING KIT CARGOGLIDE

TOOLS REQUIRED

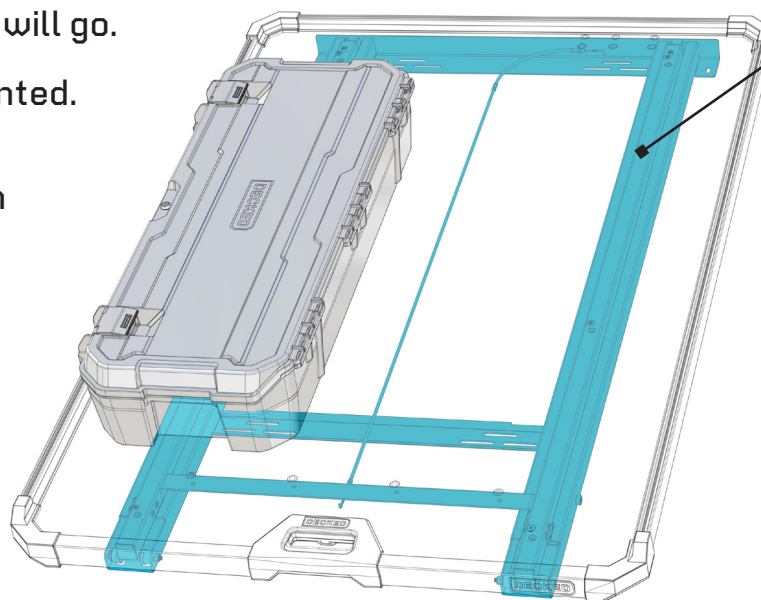
drill
1/4" and 11/32" drill bits
hammer
5/32" hex key
Blue Loctite 242
torque wrench (in-lb)

STEP 2 - Locate position.

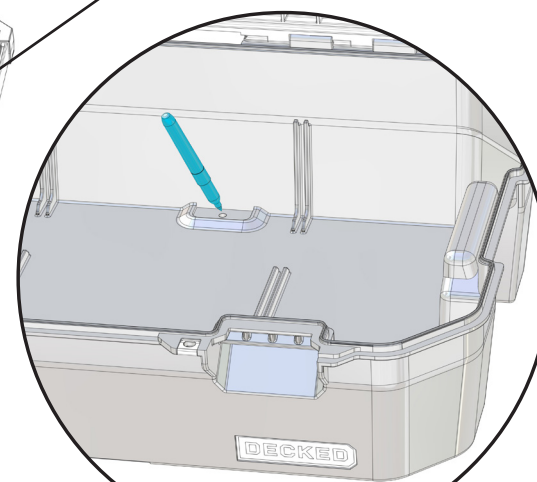
1. Pull the CargoGlide tray out as far as it will go.
2. Place the D-Co Case in the position wanted.
3. Mark each mounting location. You may want to weigh the tub down to keep it in place while marking locations.
4. Remove the D-Co Case from the CargoGlide tray.

IMPORTANT: Look under the tray to verify that all four mounting holes do NOT reside over a tray frame, crossmember or cable assembly.

Adjust position if necessary.



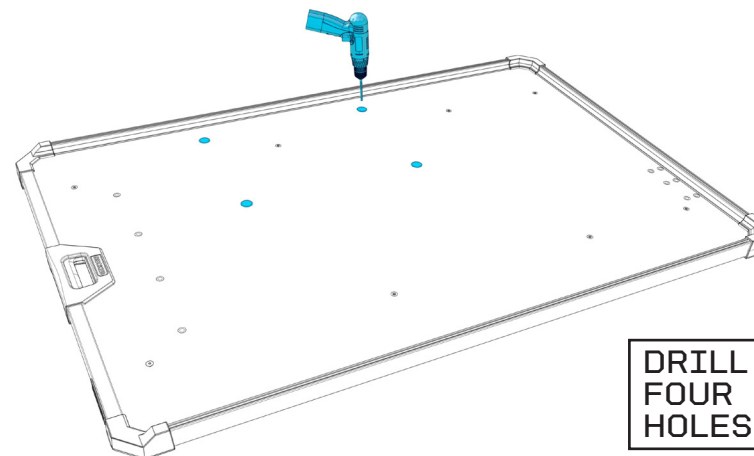
NOTE - Do not install fastener above frame.



**MARK FOUR
MOUNTING
LOCATIONS**

STEP 3 - Drilling time. Remove the tray if space is restricted.

1. Use a 1/4" drill bit to drill a pilot hole through the CargoGlide tray at each of the four mounting locations marked.
2. Use an 11/32" drill bit to enlarge each hole.



**DRILL
FOUR
HOLES**



INSTALLATION INSTRUCTIONS

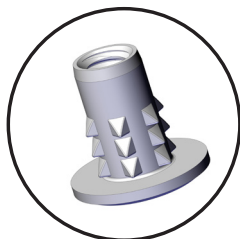
D-CO CASE MOUNTING KIT CARGOGLIDE

TOOLS REQUIRED

drill
1/4" and 11/32" drill bits
hammer
5/32" hex key
Blue Loctite 242
torque wrench (in-lb)

STEP 4 - It's hammer time.

From underneath the tray,
gently hammer in the thru-deck inserts.



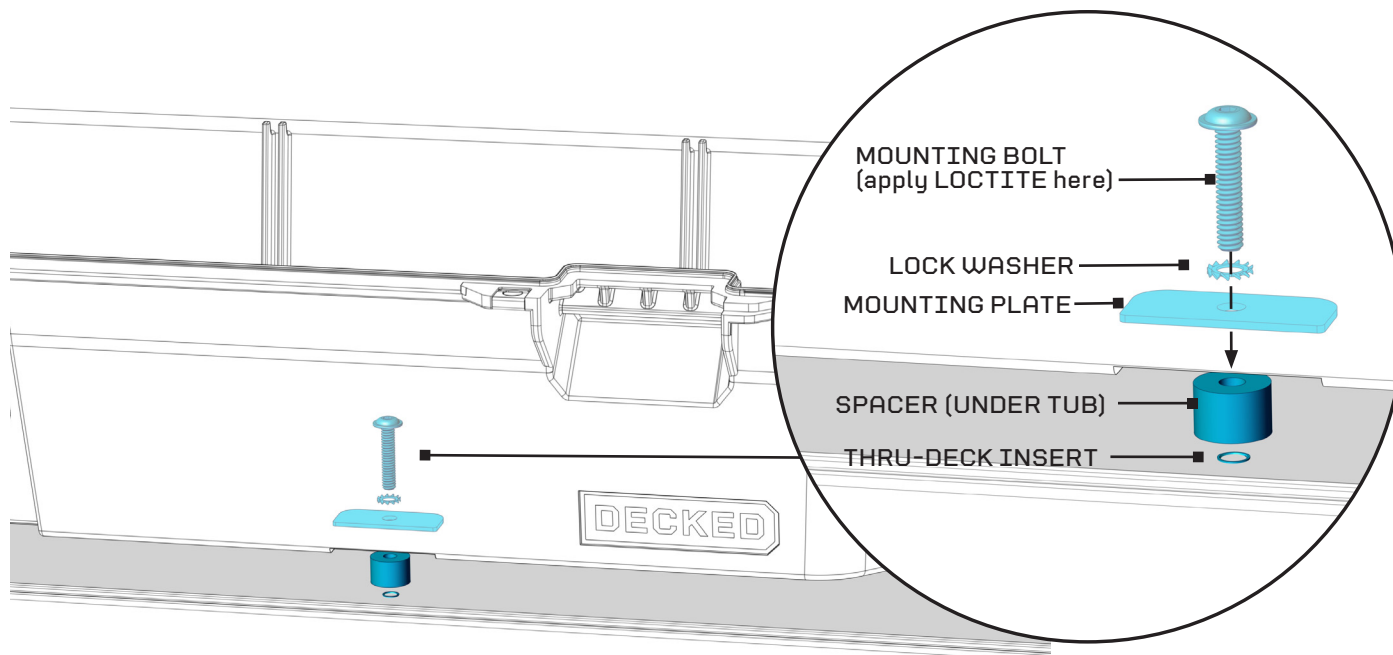
HAMMER IN
THRU-DECK
INSERTS FROM
UNDERNEATH



STEP 5

1. Place one drop of Loctite 242 on the mounting bolt threads.
2. Align D-Co Case mounting holes over the inserts.
3. Install mounting hardware as shown. Recommended torque is 80 in-lb.

NOTE: See the next page for D-Co Case use when not mounted to a CargoGlide.



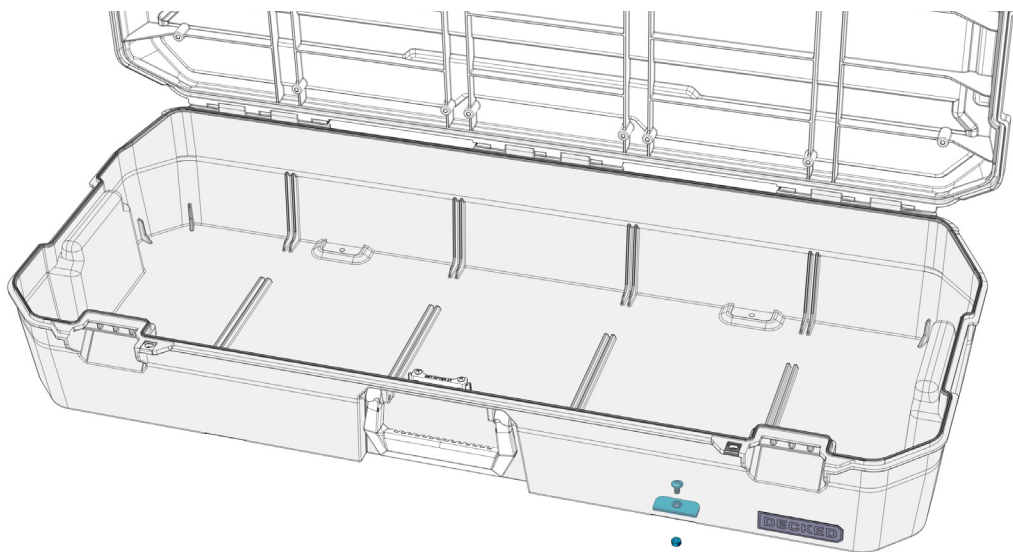


INSTALLATION INSTRUCTIONS

D-CO CASE MOUNTING KIT

CARGOGLIDE

TOOLS REQUIRED
drill
1/4" and 11/32" drill bits
hammer
5/32" hex key
Blue Loctite 242
torque wrench (in-lb)



D-CO CASE PREP FOR USE WHEN NOT MOUNTED

The D-Co Case mounting holes can be sealed when not mounted.

Remove the D-Co Case from the T-Track by removing the mounting nut and lock washer. Remove the stand-off and track nut. Save all fasteners for later use.

Remove the mounting bracket.

Place neoprene gasket in mounting depression. Place mounting bracket on top of gasket. Install the shorter, sealing bolt, lock washer and additional nut. Tighten until secure.

