

*FREE SHIPPING ON ORDERS OVER \$98 (EXCLUSIONS APPLY)

[SHOP CATEGORIES](#)[WHY S&B](#)[SHOP BY VEHICLE](#)

0

INSTALL INSTRUCTIONS FOR CAI-75-5215

[PRINT](#)

BEFORE YOU START

Note: This intake kit may not fit with the following
Aftermarket Parts installed:

- Custom Hood

**Please read the entire product guide before
proceeding.**

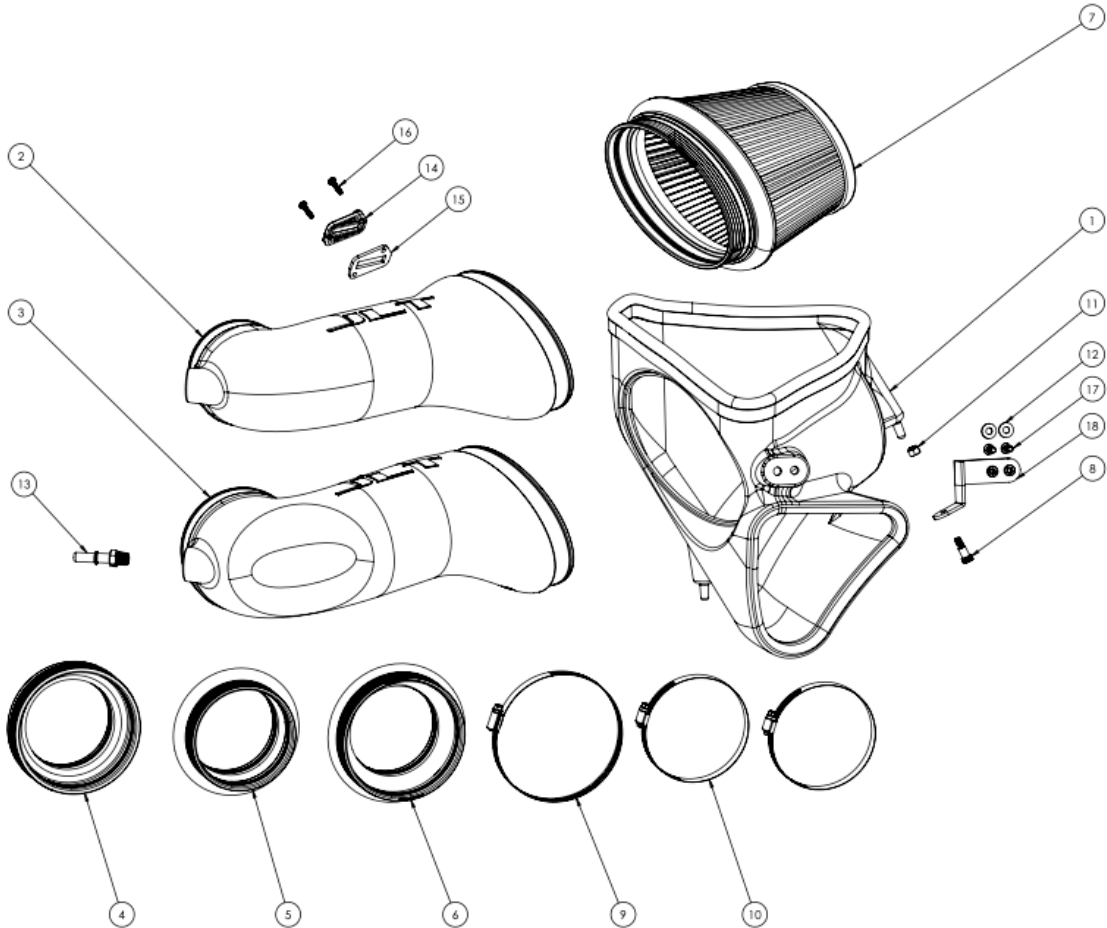
- Ensure all parts are present.
- If you are missing any of the components, call our
customer support at (909) 947-0015.
- Do not work on your vehicle while the engine is hot.
- Make sure the engine is turned off and the vehicle is in
Park or the Parking Brake is set.

REQUIRED TOOLS

[Cookie Preferences](#)

Hi. Need any help?





ITEM NO.	PART NUMBER	DESCRIPTION	QTY.
1	JP0292-00	AIR BOX/HEAT SHIELD ASSEMBLY	1
2	AL1489-00	INTAKE TUBE, NO TUNE	1
3	AL1490-00	INTAKE TUBE, CUSTOM TUNE (5" MAF)	1
4	AI3049-00	STEP HUMP COUPLER, 3.875" ID X 5.00 "	1
5	AI2851C-00	STEP HUMP COUPLER, 3.90" TO 4.20"	1
6	AI3421C-00	STEP HUMP COUPLER, 4.00" TO 4.50"	1
7	KF-1112A	FILTER	1
8	AI3548-00	ALLOY STEEL SHOULDER SCREW	1
9	AG1009-00	HOSE CLAMP, #72	1
10	AG1018-00	HOSE CLAMP #64	2
11	AI1074-00	LOCKNUT	1
12	AI1713-00	FLAT WASHER	2
13	AI3701-00	QUICK CONNECT, 10mm DIA X 1/4 NPT	1
14	AI1822-00	MAF MOUNT, BLACK	1
15	AI1823-00	GASKET, FOR MAF	1
16	AI1837-00	SCREW, SEMS, PAN HEAD, PHILLIPS, #8-32 X 3/4, SS	2
17	AI3378-00	SCREWS BLACK-OXIDE, 1/4"-20	2
18	AI3422-00	MOUNTING BRACKET	1

STEP 1:

First, go ahead and disconnect the negative battery cable.

IMPORTANT: Failure to disconnect the battery for a minimum of 2 hours may cause the Check Engine Light to illuminate upon completion of the installation or subsequent operation.

DO NOT SKIP THIS STEP!

STEP 2:

Loosen the hose clamp connecting the intake tube to the throttle body. You will need a **5/16th nut driver or 8mm Socket** to do this.



STEP 3:

Disconnect PCV Line from the intake tube.

Tip: You will need to press down on the button on the back of the PCV connector to disconnect it.



STEP 4:

Now, go ahead and loosen the hose clamp on the intake tube located between the throttle body and air box. You will need a **5/16th nut driver** or **8mm Socket**.

STEP 5:

Time to remove the MAP Sensor from the stock intake
There is a red tab on the back, that of which you'll

need to press down on in order to disconnect the sensor.

STEP 6:

Now, go ahead and disconnect the stock OEM intake tube from the throttle body and the stock air box.

STEP 7:

Time to remove the air box.
All you'll need to do is lift, tilt,
and remove as they are just
mounted via rubber
grommets.

STEP 8:

Mount the supplied bracket to
the side of the air box using
the supplied allen hardware.

STEP 9:

Mount the included shoulder screw to the bottom of the bracket.

STEP 10:

Install the S&B air filter into the S&B air box. Ensure that the lip of the air filter flange fully passes through the opening.

STEP 11:

Remove the MAP Sensor from the stock intake tube using a T220 Torx bit or Screw Driver.

Next, to prepare it for an install, go ahead and mount the spacer plate then the gasket. Next, you'll need a Philips Screw Driver to install it using the included screws.

STEP 12:

Now, go ahead and install the PCV port provided into the S&B intake tube.

Tip: Be sure not to over-tighten this.

STEP 13A:

In order to give yourself more
[Cookie Preferences](#) when installing the S&B

air box, go ahead and take a **body panel removal tool** to lift up the plastic molding on the drivers side of the engine bay.

STEP 13B:

Now, go ahead and lift up the engine bay front panel. All you need is to get it loose with enough room to maneuver the S&B air box into place.

STEP 14:

Before you install the S&B air box, please ensure that the 3 stock grommets are in place.

STEP 15:

Install the air box into the engine bay. Make sure that the three posts on the bottom of the air box line up and mount successfully to the grommets.

STEP 16:

Now, go ahead and place the large hose clamp around the

of the air filter.

[Cookie Preferences](#)

Next, install the S&B Intake Tube. With this kit you'll receive both a non-tune tube and a 5" tune required tube.

***Please note:** you must have a tune on your vehicle in order to run the 5" tube.

STEP 17:

Add the S&B throttle body coupler with associated hose clamps onto the intake tube.

Tip: Make sure to not tighten down any of the hose clamps just yet.

STEP 18:

Next, go ahead and install the S&B intake tube into the Air Throttle Body.

[Cookie Preferences](#)

STEP 19:

Now, go ahead and tighten the 3 hose clamps using a ***5/16th nut driver*** or ***8mm socket***.

STEP 20:

Reconnect the PCV line.

STEP 21:

Reconnect your MAP Sensor.

STEP 22:

Reconnect your batteries
negative battery cable.

STEP 23:

Next, please ensure that all connection points are secure and tight.

Your installation is now complete.

Cookie Preferences