



RUNNING BOARD

Installation Guide

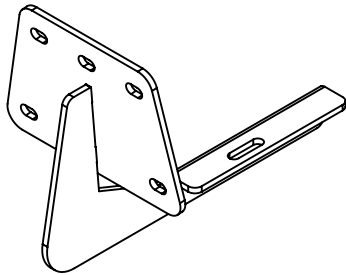


GH-25002

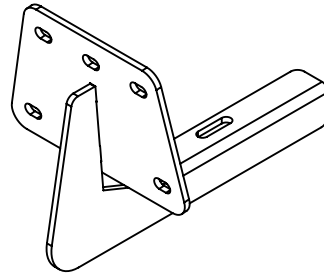
FITS RAM 1500 (2019 - 2025)

Updated May 2, 2025

GH-25002
FITS RAM 1500 (2019 THRU 2025)

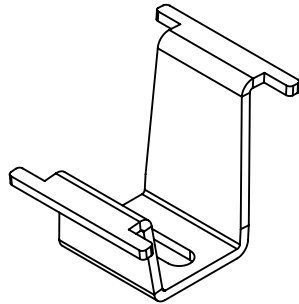


DETAIL 1

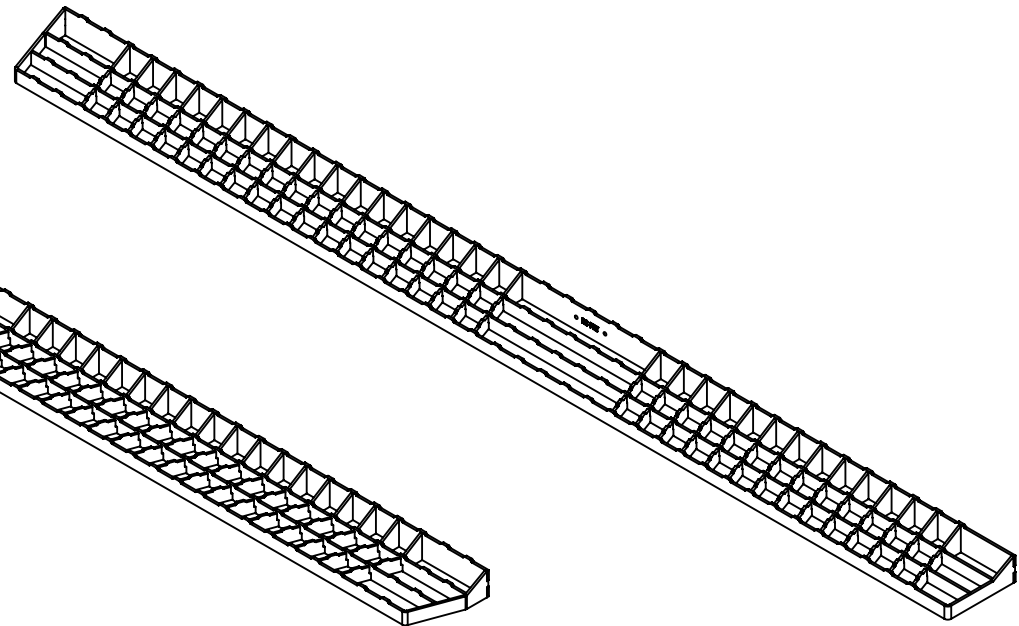


DETAIL 10

DET	REV	PartNo	DESCRIPTION	QTY
1	B	103095	BRACKET ASSY - RUNNING BOARD - CS - TRX	3
2	A	00377	WASHER - ST - 8MM - SPLIT	18
3	A	00379	NUT - ST - M8 X 1.25MM	18
4	B	103722	ASSY - RUNNING BOARD - CS - 84in	1
5	G	103584	BRACKET - RUNNING BOARD - INNER	6
6	A	00390	BOLT - SS - .313-18 X .750 - FULL THREAD	6
7	A	00391	NUT - GR C ZINC - .313-18 - DIST THREAD LOCKING	6
8	C	103819	MOUNT - LOGO - PUSH IN - MOLDED	2
9	A	901110	STICKER - DOME - GEN Y LOGO	2
10	B	103094	BRACKET ASSY - RUNNING BOARD - RS - TRX	3
11	B	103723	ASSY - RUNNING BOARD - RS - 84in	1



DETAIL 5



DETAIL 4

DETAIL 11

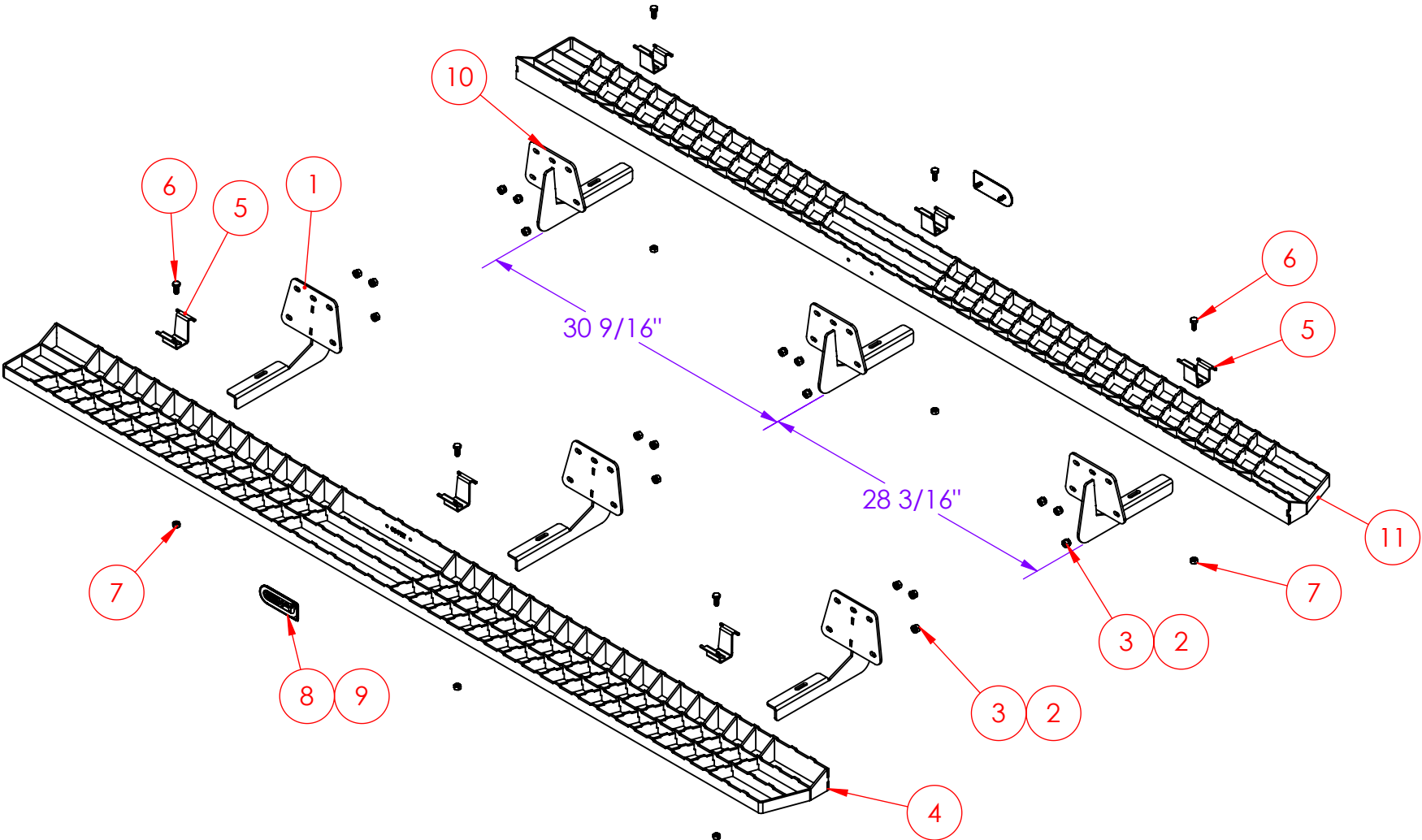
TOOLS NEEDED
RATCHET
1/2" SOCKET
1/2" WRENCH
13mm SOCKET
13mm WRENCH
TORQUE WRENCH

PROPRIETARY AND CONFIDENTIAL
THE INFORMATION CONTAINED IN THIS DRAWING IS THE SOLE PROPERTY OF GEN-Y GROUP. ANY REPRODUCTION IN PART OR AS A WHOLE WITHOUT THE WRITTEN PERMISSION OF GEN-Y GROUP IS STRICTLY PROHIBITED.
E-MAIL: mike@genyhitch.com

A	PRODUCTION RELEASE	4/24/25	LJS	
REV.	DESCRIPTION	DATE	DRW	CHK
	DIMENSIONS ARE IN INCHES			
	TOLERANCES:			
	ANGULAR: MACH ± 1.0			
	TWO PLACE DECIMAL ± .03			
	THREE PLACE DECIMAL ± .015			
	Material	NAME	DATE	
	Material <not specified>	DRAWN	LJS	4/24/25
	FINISH	CHECKED	.	.
	N/A	AREA	.	
	DO NOT SCALE DRAWING	PERIMETER	.	
		TRACKING PART NO:		
				GEN-Y HITCH NAPPANEE IN

GEN-Y HITCH			
DESCRIPTION			
MAIN ASSY - RUNNING BOARD - RAM 1500 (2019 THRU 2025)			
SIZE	DWG. NO.	REV.	
A	GH-25002	A	
SCALE:1:32	WEIGHT:	81.020 FT/LB	SHEET 1 OF 3

GH-25002
FITS RAM 1500 (2019 THRU 2025)



PROPRIETARY AND CONFIDENTIAL
THE INFORMATION CONTAINED IN THIS
DRAWING IS THE SOLE PROPERTY OF
GEN-Y GROUP. ANY REPRODUCTION IN
PART OR AS A WHOLE WITHOUT THE
WRITTEN PERMISSION OF GEN-Y GROUP IS
STRICTLY PROHIBITED.
E-MAIL: mike@genyhitch.com

DIMENSIONS ARE IN INCHES	
TOLERANCES:	
ANGULAR: MACH	± 1.0
TWO PLACE DECIMAL	± .03
THREE PLACE DECIMAL	± .015
Material	Material <not specified>
FINISH	N/A
DO NOT SCALE DRAWING	

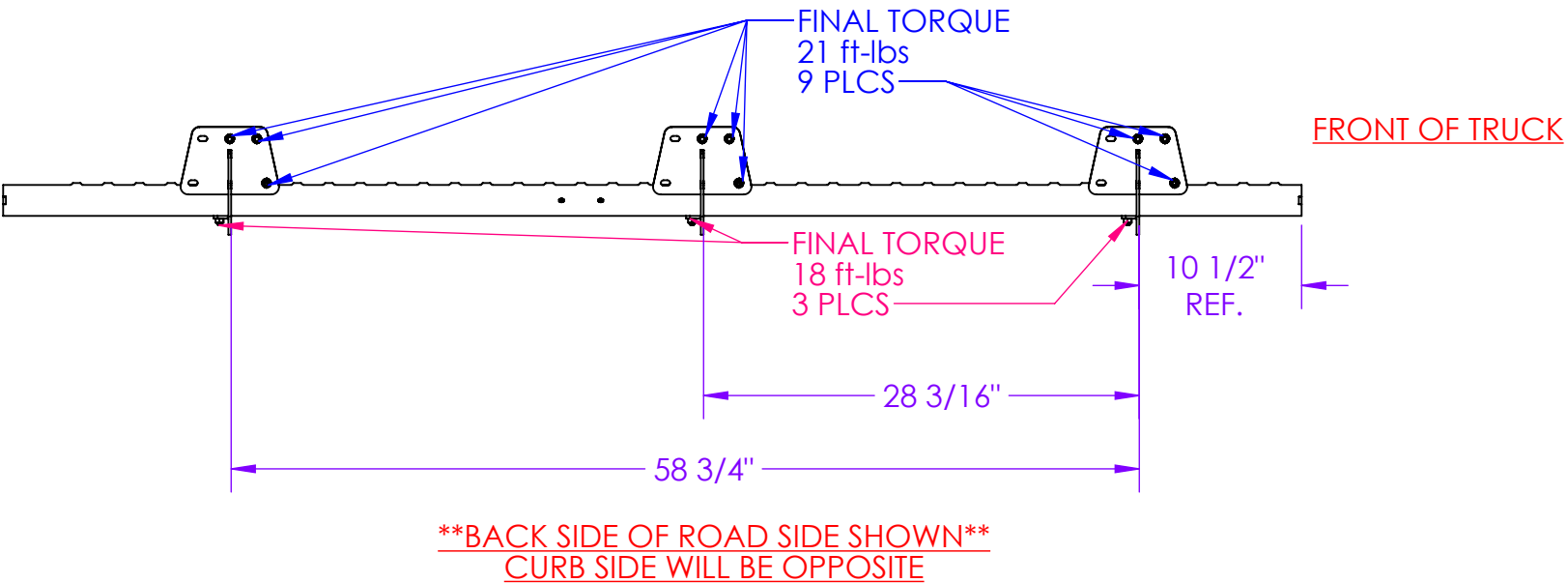
	NAME	DATE
DRAWN	LJS	4/25/25
CHECKED	.	.
AREA	.	.
PERIMETER	.	.
TRACKING PART NO:	.	.

GEN-Y HITCH NAPPANEE IN	
----------------------------	--



DESCRIPTION		
MAIN ASSY - RUNNING BOARD - RAM 1500 (2019 THRU 2025)		
SIZE	DWG. NO.	REV.
A	GH-25002	A
SCALE: 1:32	WEIGHT: 81.020 FT/LB	SHEET 2 OF 3

- STEP 1 -
LOOSELY INSTALL ALL BRACKETS, RUNNING BOARDS & HARDWARE.
- STEP 2 -
ENSURE RUNNING BOARD & BRACKETS ARE PROPERLY ALIGNED THEN TORQUE HARDWARE TO SPECIFICATIONS BELOW.



PROPRIETARY AND CONFIDENTIAL
THE INFORMATION CONTAINED IN THIS
DRAWING IS THE SOLE PROPERTY OF
GEN-Y GROUP. ANY REPRODUCTION IN
PART OR AS A WHOLE WITHOUT THE
WRITTEN PERMISSION OF GEN-Y GROUP IS
STRICTLY PROHIBITED.
E-MAIL: mike@genyhitch.com

DIMENSIONS ARE IN INCHES	
TOLERANCES:	
ANGULAR: MACH	± 1.0
TWO PLACE DECIMAL	± .03
THREE PLACE DECIMAL	± .015
Material	Material <not specified>
FINISH	N/A
DO NOT SCALE DRAWING	

	NAME	DATE
DRAWN	LJS	4/25/25
CHECKED	.	.
AREA	.	.
PERIMETER	.	.
TRACKING PART NO:	.	.
GEN-Y HITCH NAPPANEE IN		

DESCRIPTION		
MAIN ASSY - RUNNING BOARD - RAM 1500 (2019 THRU 2025)		
SIZE	DWG. NO.	REV.
A	GH-25002	A
SCALE: 1:16	WEIGHT: 40.510 FT/LB	SHEET 3 OF 3