



RUNNING BOARD

Installation Guide

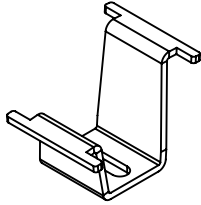


GH-25003

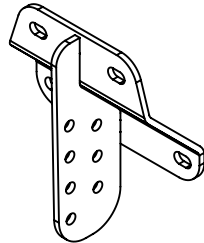
FITS FORD F150, F250 & F350 (2017 - 2025)

Updated May 2, 2025

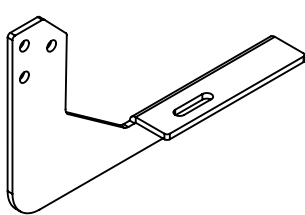
GH-25003
FITS FORD F150, F250 & F350 (2017 THRU 2025)



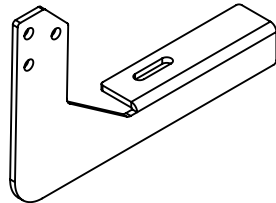
DETAIL 8



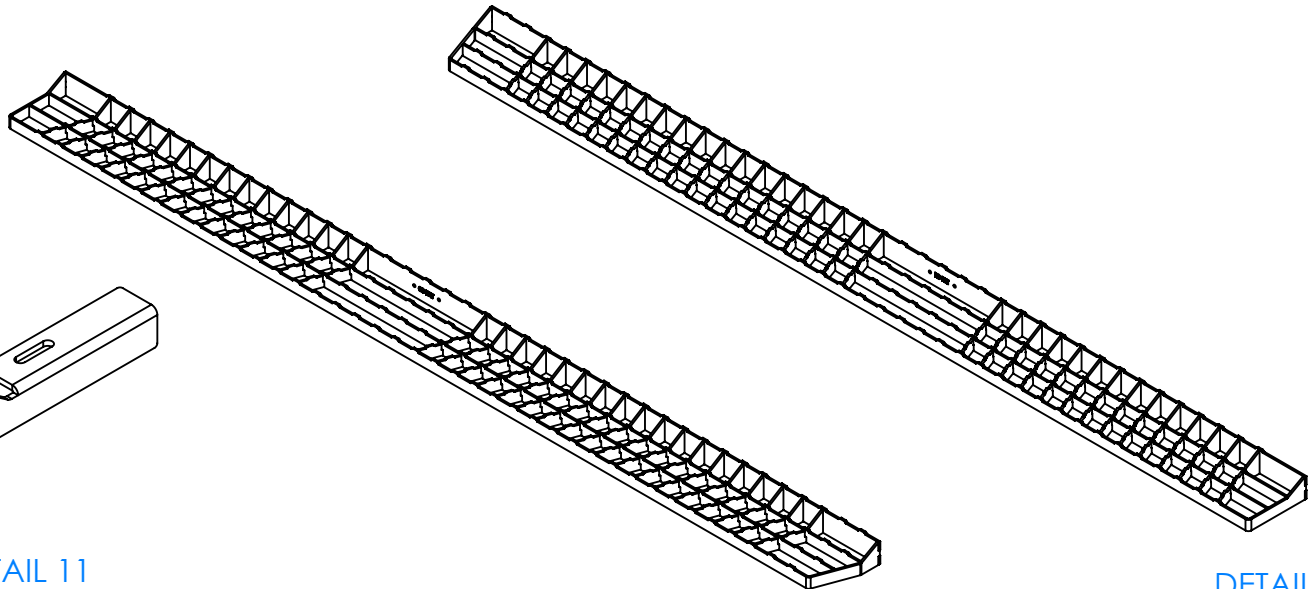
DETAIL 2



DETAIL 1



DETAIL 11



DETAIL 7

DETAIL 12

DET	REV	PartNo	DESCRIPTION	QTY
1	C	103713	PLATE - LOWER - BRACKET - CS - FORD	3
2	B	103709	ASSY - UPPER MOUNT BRACKET - FORD	6
3	A	00377	WASHER - ST - 8MM - SPLIT	18
4	A	00379	NUT - ST - M8 X 1.25MM	18
5	A	00390	BOLT - SS - .313-18 X .750 - FULL THREAD	24
6	A	00391	NUT - GR C ZINC - .313-18 - DIST THREAD LOCKING	24
7	B	103722	ASSY - RUNNING BOARD - CS - 84in	1
8	G	103584	BRACKET - RUNNING BOARD - INNER	6
9	C	103819	MOUNT - LOGO - PUSH IN - MOLDED	2
10	A	901110	STICKER - DOME - GEN Y LOGO	2
11	C	103712	PLATE - LOWER - BRACKET - RS - FORD	3
12	B	103723	ASSY - RUNNING BOARD - RS - 84in	1

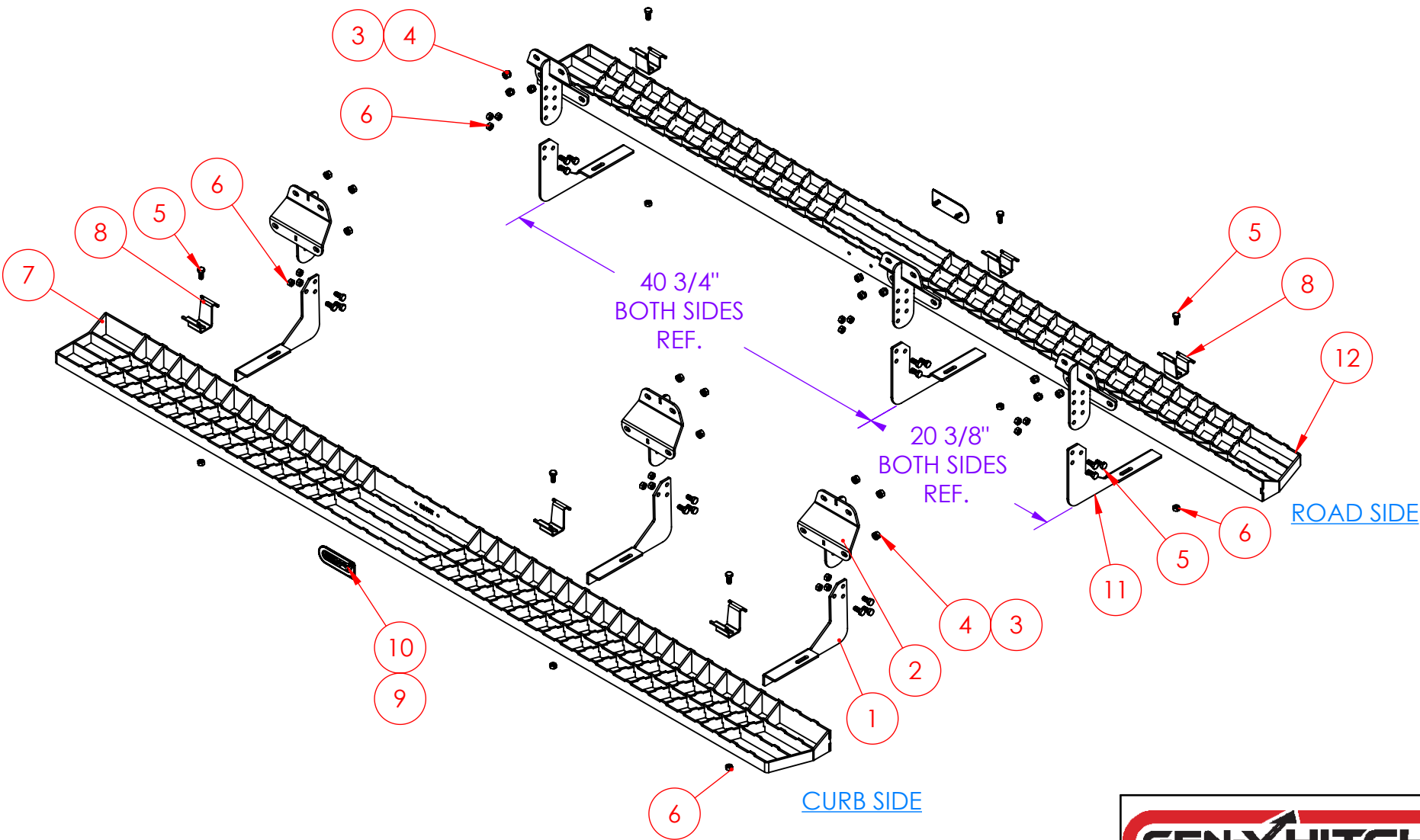
TOOLS NEEDED
RATCHET
1/2" SOCKET
1/2" WRENCH
13mm SOCKET
13mm WRENCH
TORQUE WRENCH

PROPRIETARY AND CONFIDENTIAL
THE INFORMATION CONTAINED IN THIS DRAWING IS THE SOLE PROPERTY OF GEN-Y GROUP. ANY REPRODUCTION IN PART OR AS A WHOLE WITHOUT THE WRITTEN PERMISSION OF GEN-Y GROUP IS STRICTLY PROHIBITED.
E-MAIL: mike@genyhitch.com

A	PRODUCTION RELEASE	4/23/25	LJS	
REV.	DESCRIPTION	DATE	DRW	CHK
DIMENSIONS ARE IN INCHES		NAME	DATE	
TOLERANCES:		DRAWN	4/23/25	
ANGULAR: MACH ± 1.0		CHECKED		
TWO PLACE DECIMAL $\pm .03$		AREA		
THREE PLACE DECIMAL $\pm .015$		PERIMETER		
Material	Material <not specified>	TRACKING PART NO:	GEN-Y HITCH NAPPANEE IN	
FINISH	N/A			
DO NOT SCALE DRAWING				

GEN-Y HITCH			
DESCRIPTION			
MAIN ASSY - RUNNING BOARD - FORD F150, F250 & F350 (2017 THRU 2025)			
SIZE	DWG. NO.	REV.	
A	GH-25003	A	
SCALE: 1:32	WEIGHT:	86.143 FT/LB	SHEET 1 OF 3

GH-25003
FITS FORD F150, F250 & F350 (2017 THRU 2025)



PROPRIETARY AND CONFIDENTIAL
THE INFORMATION CONTAINED IN THIS DRAWING IS THE SOLE PROPERTY OF GEN-Y GROUP. ANY REPRODUCTION IN PART OR AS A WHOLE WITHOUT THE WRITTEN PERMISSION OF GEN-Y GROUP IS STRICTLY PROHIBITED.
E-MAIL: mike@genyhitch.com

DIMENSIONS ARE IN INCHES	
TOLERANCES:	
ANGULAR: MACH ± 1.0	
TWO PLACE DECIMAL ± .03	
THREE PLACE DECIMAL ± .015	
Material	Material <not specified>
FINISH	N/A
DO NOT SCALE DRAWING	

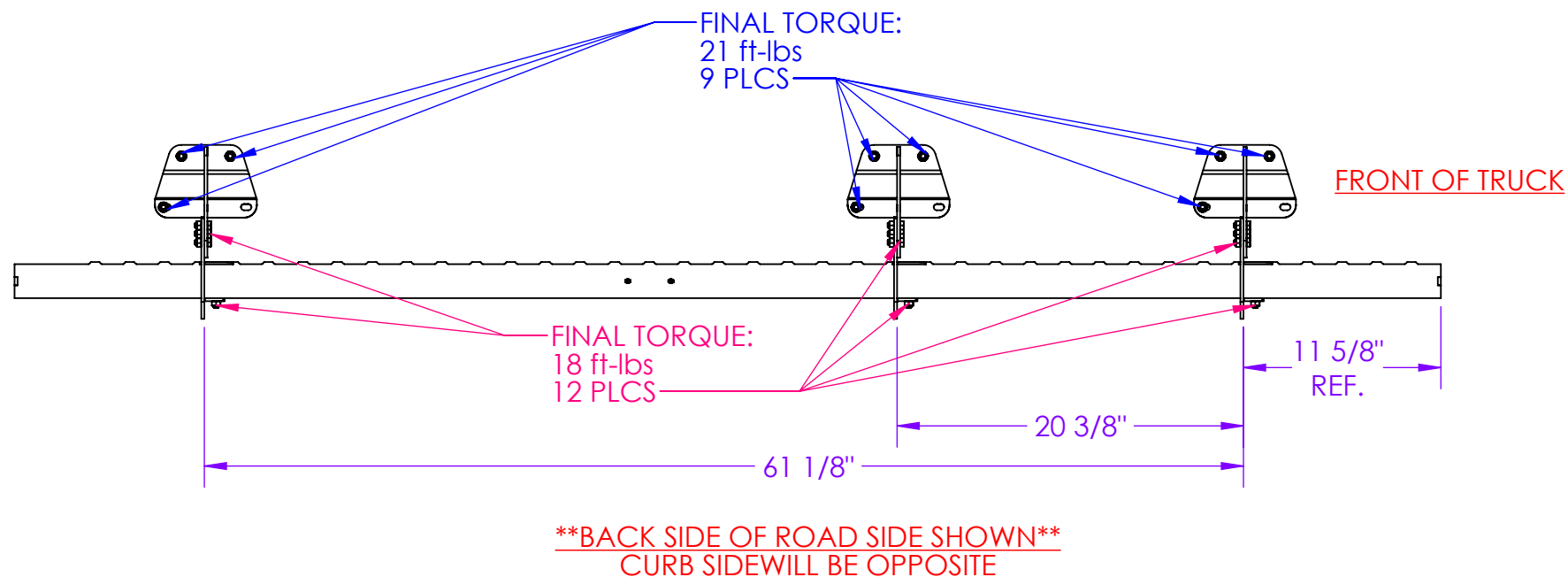
	NAME	DATE
DRAWN	LJS	4/23/25
CHECKED	.	.
AREA	.	.
PERIMETER	.	.
TRACKING PART NO:	.	.

GEN-Y HITCH NAPPANEE IN	
----------------------------	--

DESCRIPTION		
MAIN ASSY - RUNNING BOARD - FORD F150, F250 & F350 (2017 THRU 2025)		
SIZE	DWG. NO.	REV.
A	GH-25003	A
SCALE: 1:32	WEIGHT: 86.143 FT/LB	SHEET 2 OF 3

GH-25003
FITS FORD F150, F250 & F350 (2017 THRU 2025)

- STEP 1 -
LOOSELY INSTALL ALL BRACKETS, RUNNING BOARD & HARDWARE.
- STEP 2 -
ENSURE RUNNING BOARD & BRACKETS ARE PROPERLY ALIGNED THEN TORQUE HARDWARE TO SPECIFICATIONS BELOW.



PROPRIETARY AND CONFIDENTIAL
THE INFORMATION CONTAINED IN THIS
DRAWING IS THE SOLE PROPERTY OF
GEN-Y GROUP. ANY REPRODUCTION IN
PART OR AS A WHOLE WITHOUT THE
WRITTEN PERMISSION OF GEN-Y GROUP IS
STRICTLY PROHIBITED.
E-MAIL: mike@genyhitch.com

DIMENSIONS ARE IN INCHES	
TOLERANCES:	
ANGULAR: MACH ± 1.0	
TWO PLACE DECIMAL ± .03	
THREE PLACE DECIMAL ± .015	
Material	Material <not specified>
FINISH	N/A
DO NOT SCALE DRAWING	

	NAME	DATE
DRAWN	LJS	4/23/25
CHECKED	.	.
AREA	.	
PERIMETER	.	
TRACKING PART NO:		
	GEN-Y HITCH NAPPANEE IN	

GEN-Y HITCH		
DESCRIPTION		
MAIN ASSY - RUNNING BOARD - FORD F150, F250 & F350 (2017 THRU 2025)		
SIZE	DWG. NO.	REV.
A	GH-25003	A
SCALE: 1:24	WEIGHT: 43.104 FT/LB	SHEET 3 OF 3