

advanced FLOW engineering Cold Air Intake System

Instruction Manual P/N: 54-13070D / 54-13070R

Make: Ford	Model: Super Duty F-250	Year: 2020-2024	Engine: V8-6.7L (td)
Make: Ford	Model: Super Duty F-350	Year: 2020-2024	Engine: V8-6.7L (td)
Make: Ford	Model: Super Duty F-450	Year: 2020-2024	Engine: V8-6.7L (td)



- Please read the entire instruction manual before proceeding.
- Ensure all components listed are present.
- For technical support please call 951-493-7185.
- Ensure you have all necessary tools before proceeding.
- Do not attempt to work on your vehicle when the engine is hot.
- Retain factory parts for future use.

Label	Qty.	Description	Part Number
A1	1	Air Filter (Pro 5R)	24-91120
A2	1	Air Filter (Pro DRY S)	21-91120
B	1	Tube	05-5413070B1
C	1	Housing	05-5413070B2
D	1	Coupler, Silicone Bellows	05-01600
E	2	Clamp, 072 (3" - 5")	03-50010
F	1	Seal Trim, Scoop	05-01553
G	4	Retainer Clip	05-01554
H	1	Seal, Trim: 3/4" Bulb (31"L)	05-01507
J	2	Screw, Torx: M4x10mm	03-50490

Installation will require the following tools:

Panel clip remover, T20 Torx driver, 7mm & 8mm nut drivers, 7mm socket, 10" extension, and driver

Warranty Information available at <https://afepower.com/contact#warranty>

Emissions Disclaimer: This product is not currently CARB exempt and is not available for purchase in California or for use on any vehicle registered with the California Department of Motor Vehicles.

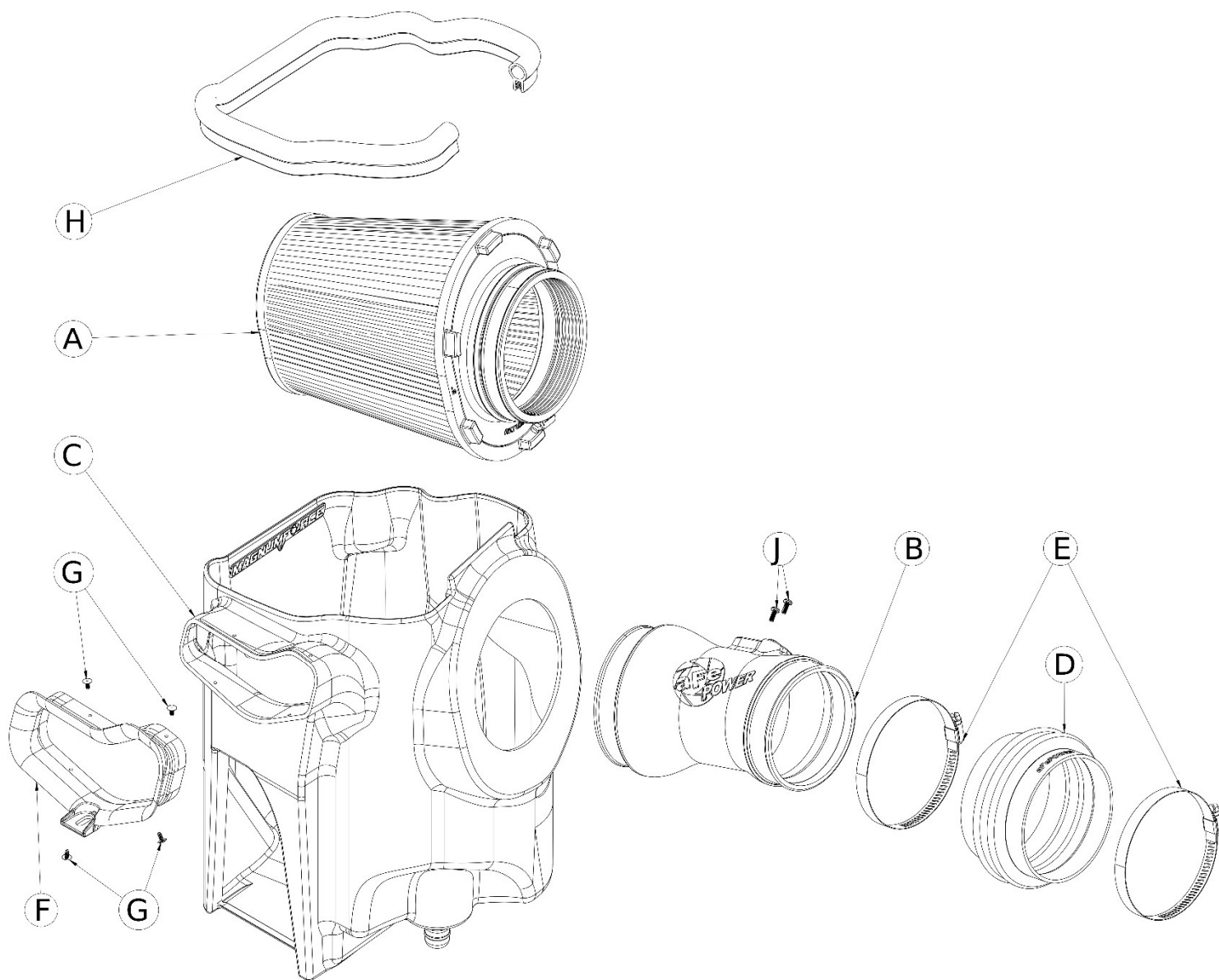




Figure A

Refer to Figure A for Step 1

Step 1: Using a 7mm nut driver, loosen the clamps ① at the turbo inlet and the air filter cover. Remove the hose ② from the intake tube clip and remove the intake tube ③.

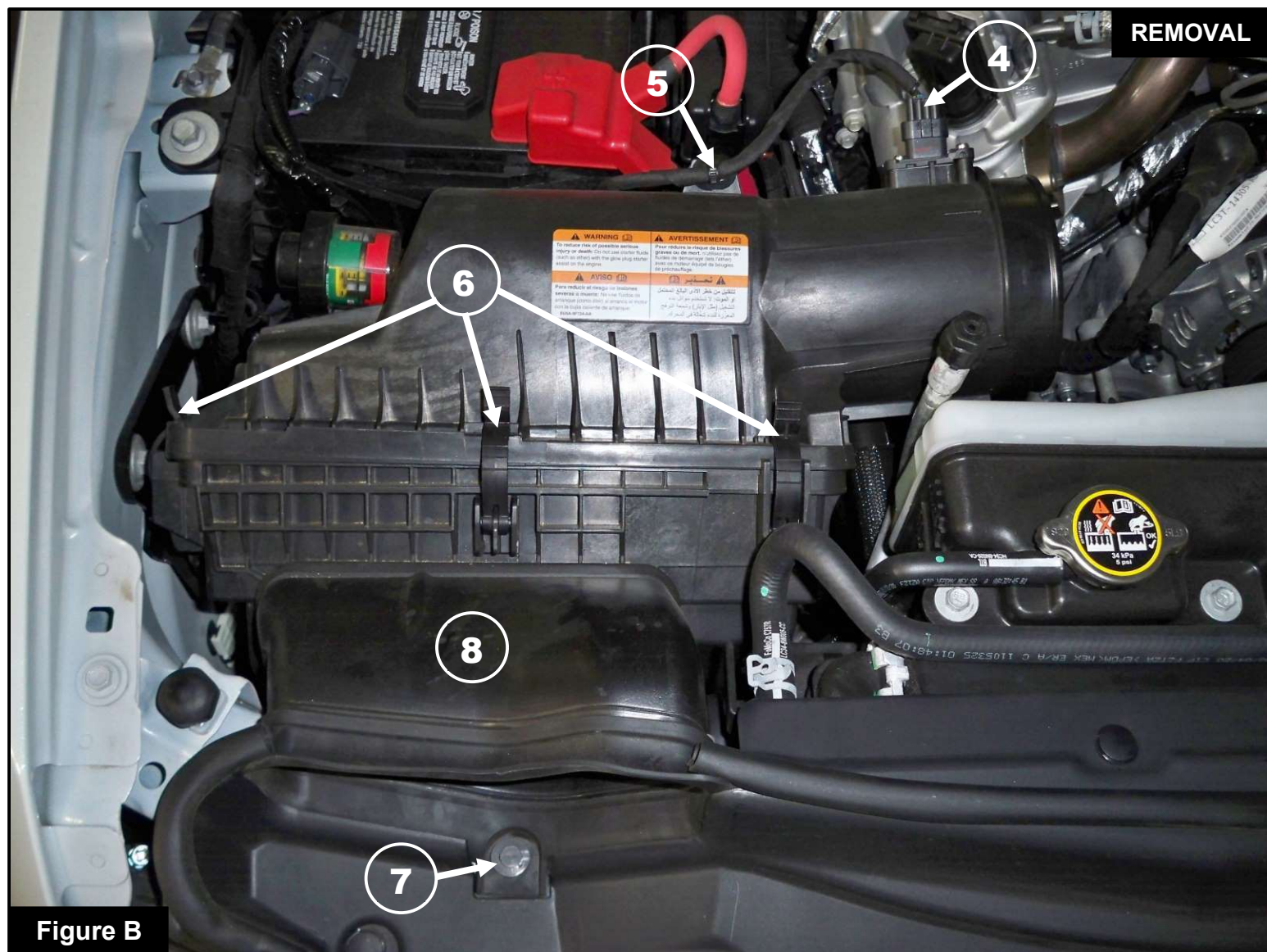


Figure B

Refer to Figure B for Steps 2-6

Step 2: Disconnect the MAF sensor (4) and the clip (5) holding the harness.

Step 3: Unclip the three tabs (6) from the air filter cover.

Step 4: Remove the air filter cover and air filter.

Step 5: Using a panel clip remover, remove the retaining plastic clip (7) holding part of the scoop seal down and set aside for later use.

Step 6: Snap out the plastic scoop (8) from the air filter housing.



Refer to Figure C for Steps 7-8

Step 7: Using a 7mm socket, extension & driver, remove the screw ⑨ holding the air filter housing to the grill inlet duct.

Step 8: Remove the air filter housing by pulling it straight up from its mounting grommets.


Figure D

Refer to Figure D for Steps 9-10

Step 9: Place the scoop seal trim (10) on the scoop opening of the aFe POWER housing.

Step 10: Align the holes from the scoop seal trim and the aFe POWER housing. Insert all four retainer clips (11) fully into the cavities and make sure the seal trim is secure to the aFe POWER housing.



Figure E

Refer to Figure E for Step 11

Step 11: Remove the two grommets (12) from the air filter housing and install them onto the aFe POWER housing. Make sure they are fully seated past the bead.

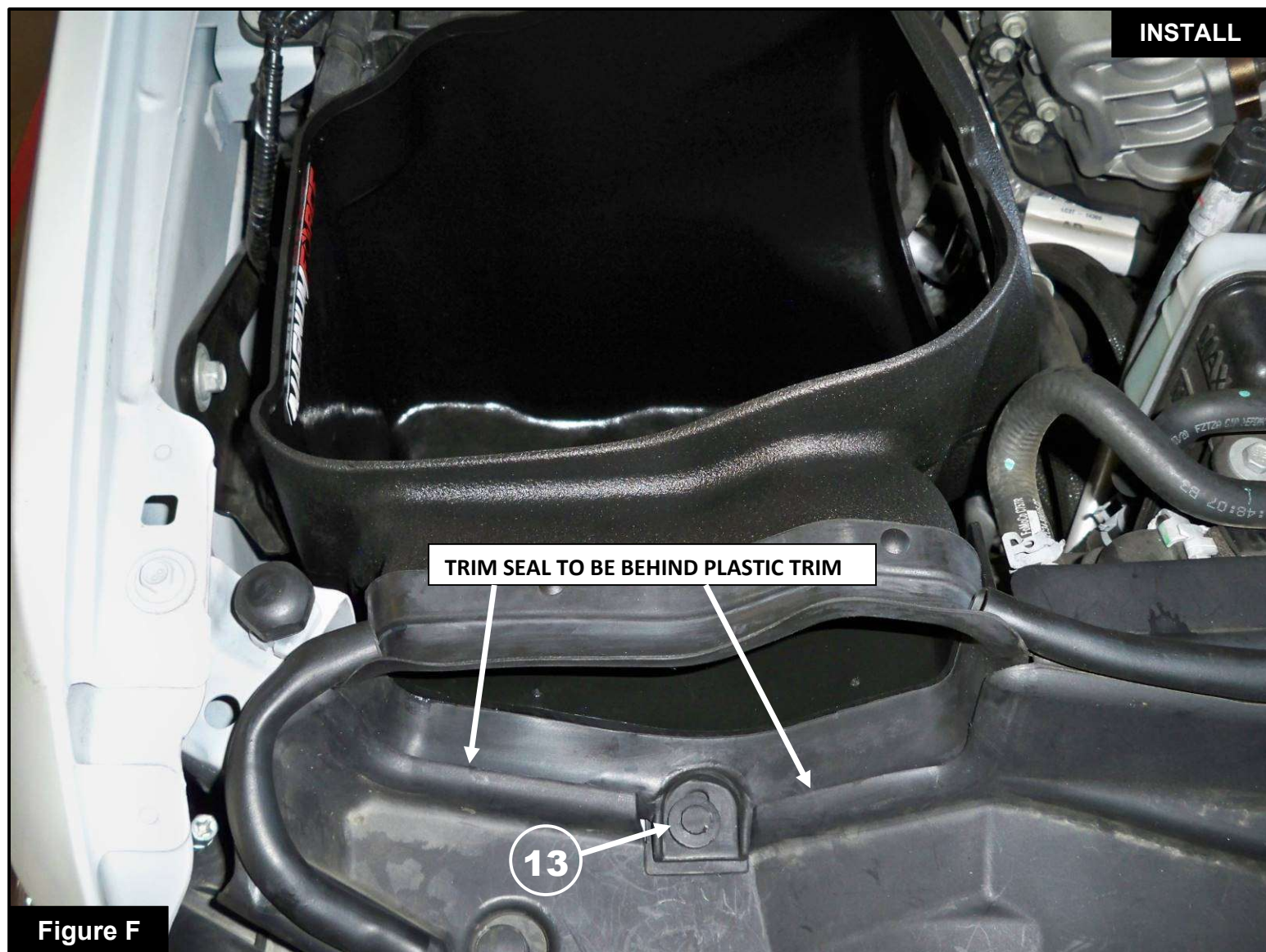


Figure F

Refer to Figure F for Steps 12-13

Step 12: Install the aFe POWER housing on to vehicle. Make sure the bottom mounting pin is fully seated in the mounting grommet and the two side mounting pins with grommets are fully engaged on the mounting bracket.

Step 13: Make sure the scoop seal trim seats behind the plastic trim cover (please see picture). Install the retaining plastic clip (13) removed on step 5 to secure the trim seal.



Figure G

Refer to Figure G for Steps 14-15

Step 14: Remove the filter clamp (14) from the aFe POWER filter. Slide the aFe POWER filter into the aFe POWER housing from the top. Then guide the filter flange through the round opening in the housing and snap in the filter. Place the filter clamp on the filter flange.

Step 15: Install the seal trim (15) on the top opening of the housing as shown.



Refer to Figure H for Step 16

Step 16: Using a T20 Torx driver, remove the MAF sensor ①⑥ from the air filter cover and install it on the aFe POWER intake tube using the supplied M4 screws.

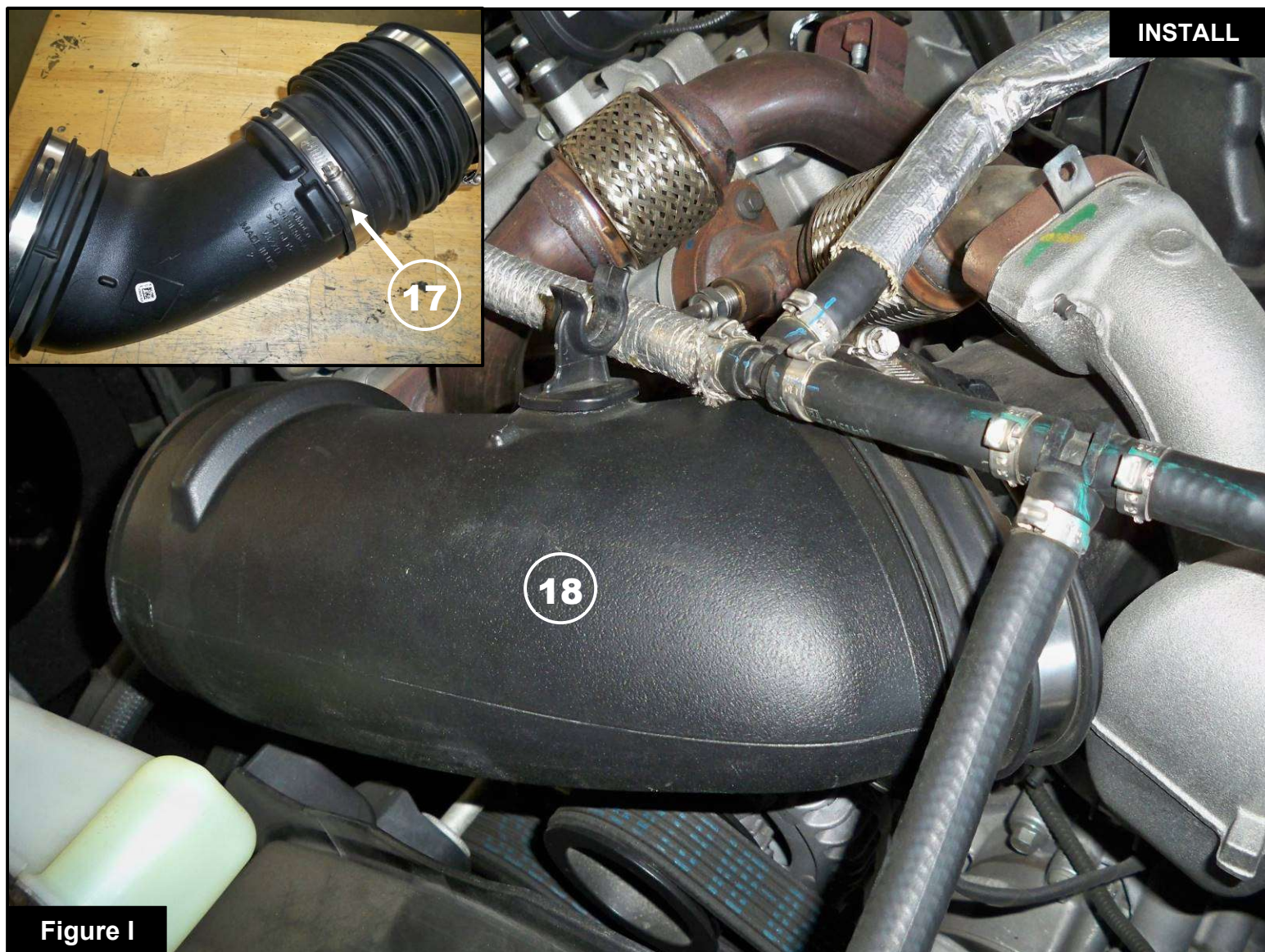


Figure I

Refer to Figure I for Steps 17-18

Step 17: Using a 7mm nut driver, loosen the middle hose clamp (17) of the factory tube assembly and separate the factory intake tube from the factory bellows coupler.

Step 18: Install the factory intake tube (18). Snug but do not tighten the hose clamp.



Figure J

Refer to Figure J for Steps 19-20

Step 19: Place the supplied aFe POWER coupler (19) and a #072 clamp (20) on the factory intake tube. Place the other #072 clamp (21) on the installed coupler.

Step 20: Install the aFe POWER intake tube (22) into the vehicle. Slide the tube into the coupler first, then into the air filter. Align the aFe POWER intake tube, then using an 8mm nut driver, tighten all the clamps.



Figure K

Refer to Figure K for Steps 21-23

Step 21: Reconnect the MAF sensor (23).

Step 22: Install the hose (24) back on the intake tube clip and make sure that it is secure.

Step 23: Check all the components are tight and secure. Your installation is now complete. Thank you for choosing aFe POWER!

NOTE: Check all bolts, clamps, and connectors after 100-200 miles.



Page left blank intentionally



advanced FLOW engineering, inc.

Corona, CA 92879

<https://afepower.com/contact>