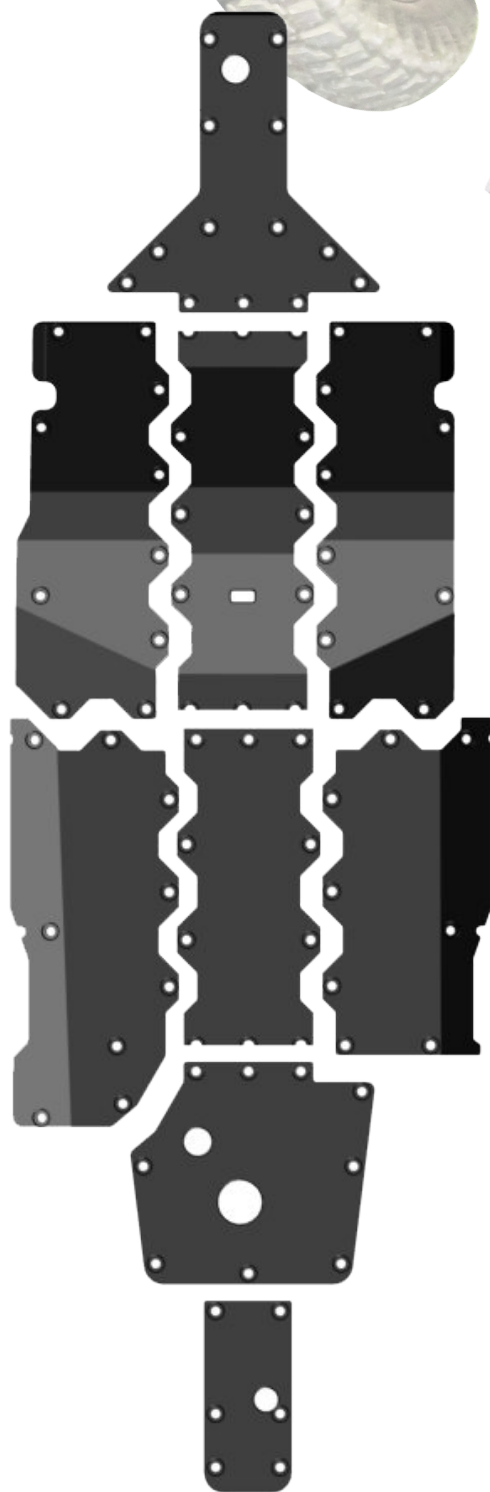


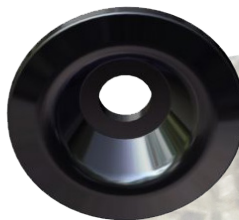
INSTALLATION INSTRUCTIONS

FSP-CF-Z9504: Full Skid Plate Kit

- ⚙ Please look through and read these instructions BEFORE starting so you understand what processes you'll be doing, and possible extra tools you may need.
- ⚙ Do Not discard product packaging until installation is complete and functioning properly.



5mm Drill Bit
(1pc)



36mm Bowl Washer
(78pcs)



1/4-20x1" Self Tap
(32pcs)



M6x25 Hex Flanged
(10pcs)

1. First, to point out, is that there are Two (2) sets of screws you will need to install. The first set is installing the **New Skid Plates** using your existing **Factory Screws** that came with your vehicle, and the last set are screws that are provided in your kit to fill those remaining holes. **Fig.1a** shows these existing **Factory Hole Locations** with all the **New Skid Plates** on, and **Fig.1b** showing the remaining holes filled with the **New Self-Tap Screws** provided in your kit.

So when you start to install your new skid plates, *first install them using the Factory Screws* in only the existing locations circled and shown in **Fig.1a**. Then follow up with the **Self-Tapped Screw Locations** in **Fig.1b**.

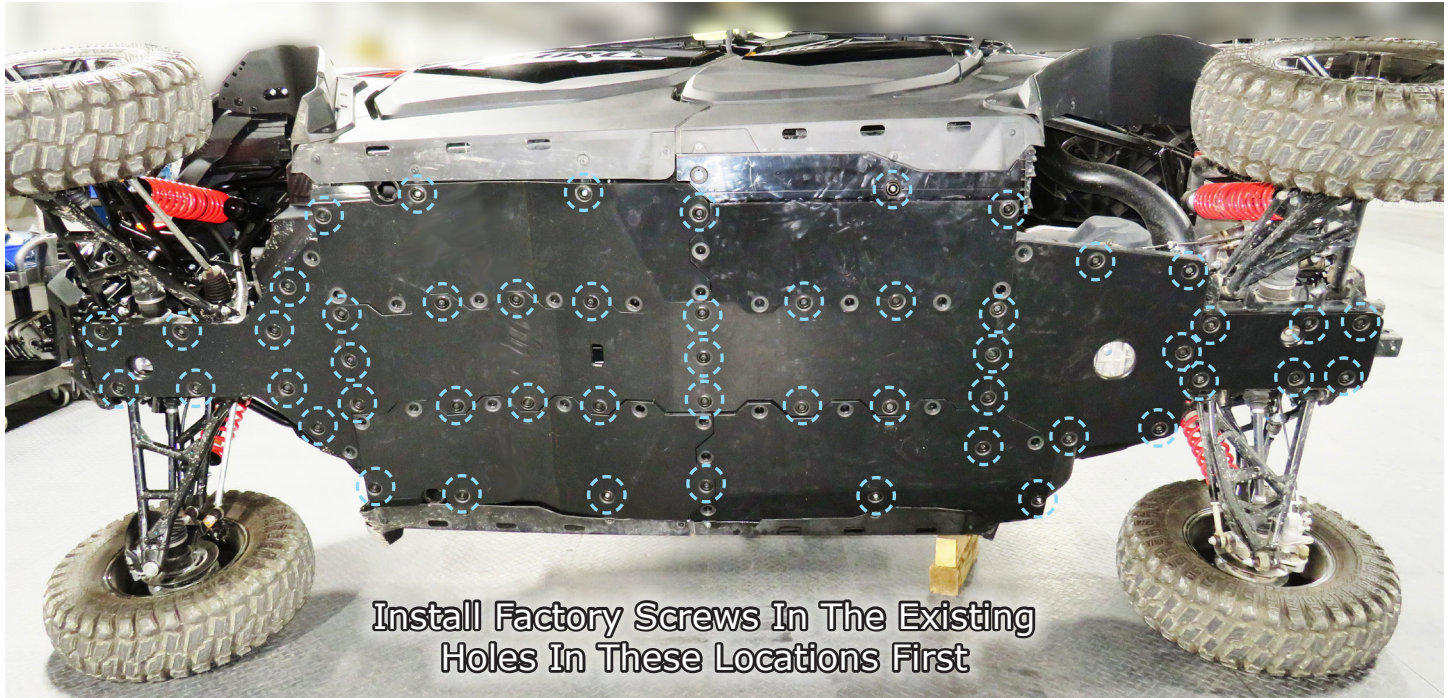


Fig.1a

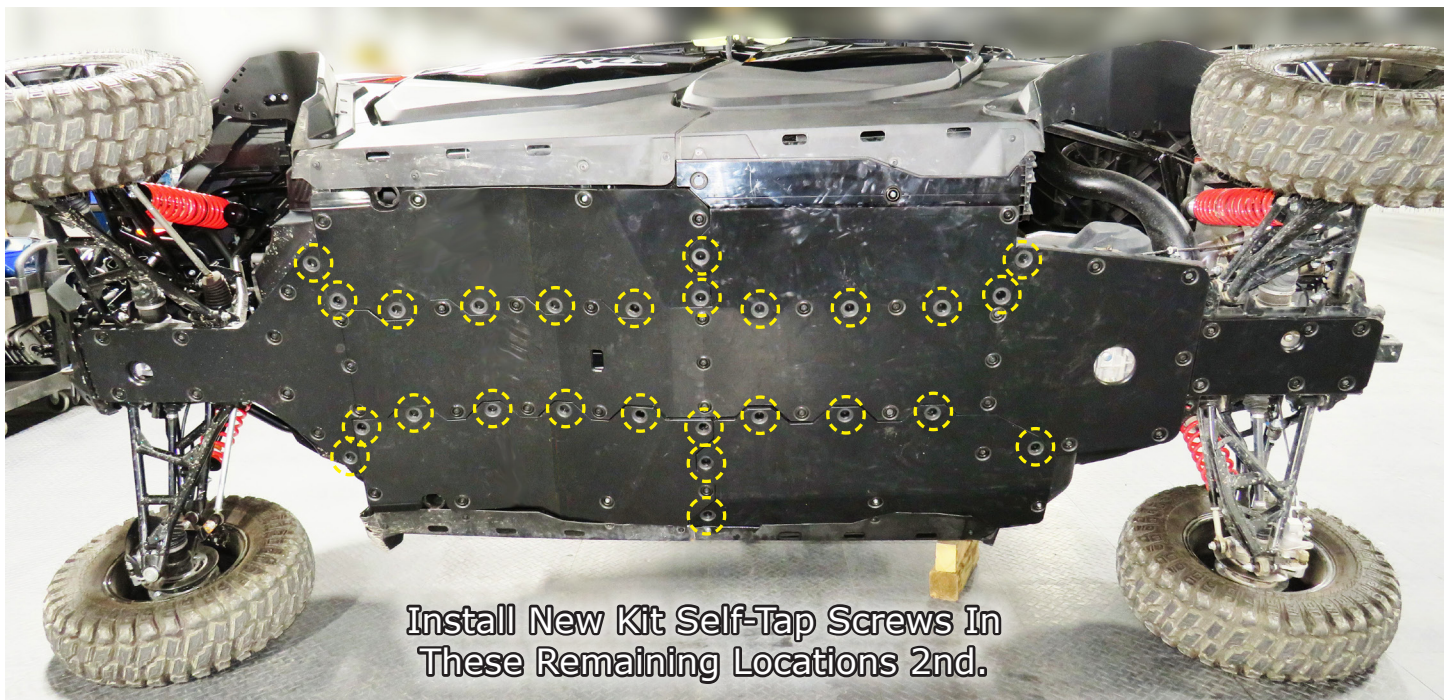


Fig.1b

NOTE. There are also **Four (4) Screws**, when installing, that are Longer than the rest. These are the locations marked with a **Red Dot** shown in **Fig.1c** below. They are the M6x25 Hex Flanged Bolts provided in your kit. Only 4 needed but your kit may have extras.

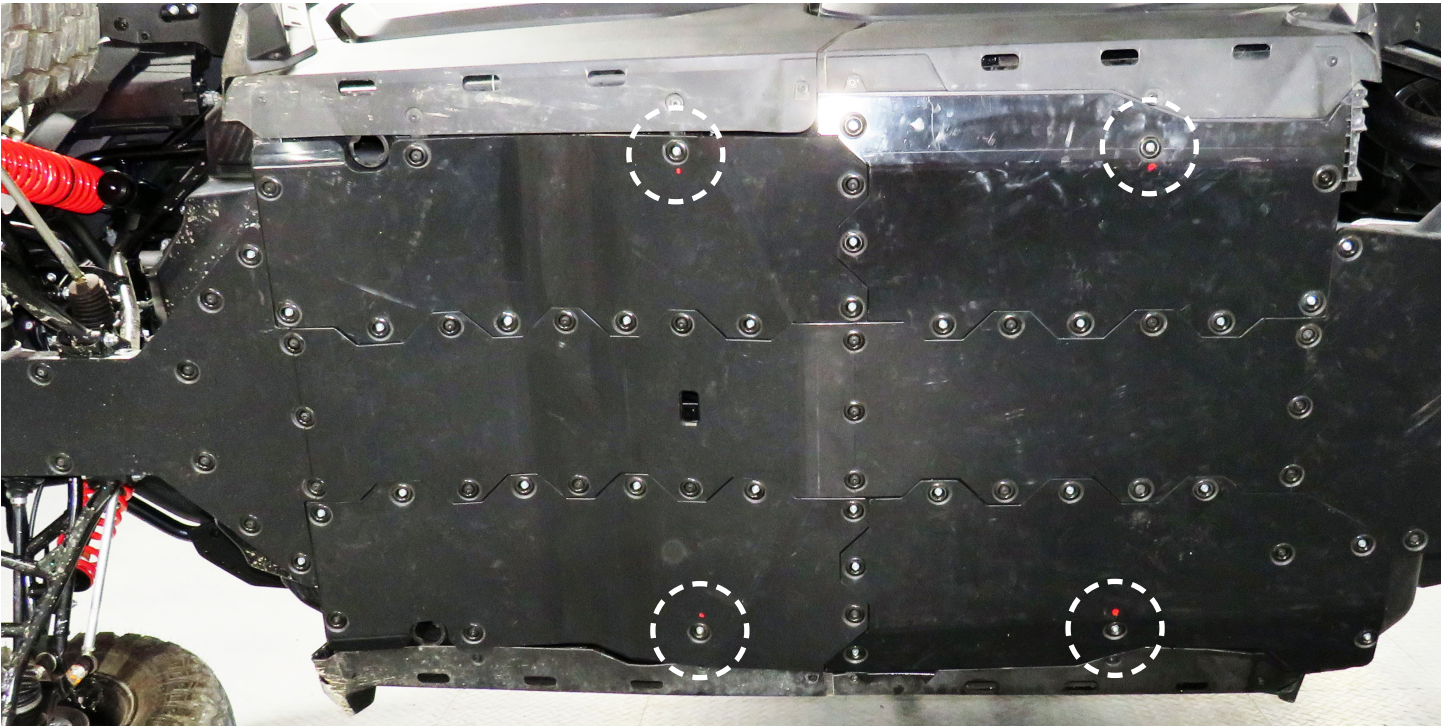


Fig.1c

2.First, you will need to get the vehicle up off the ground on secure jacks or equivalent, or on it's side as we prefer to do. Then remove your **Factory Skid Plates** or covers to start, as shown in **Fig.2**.

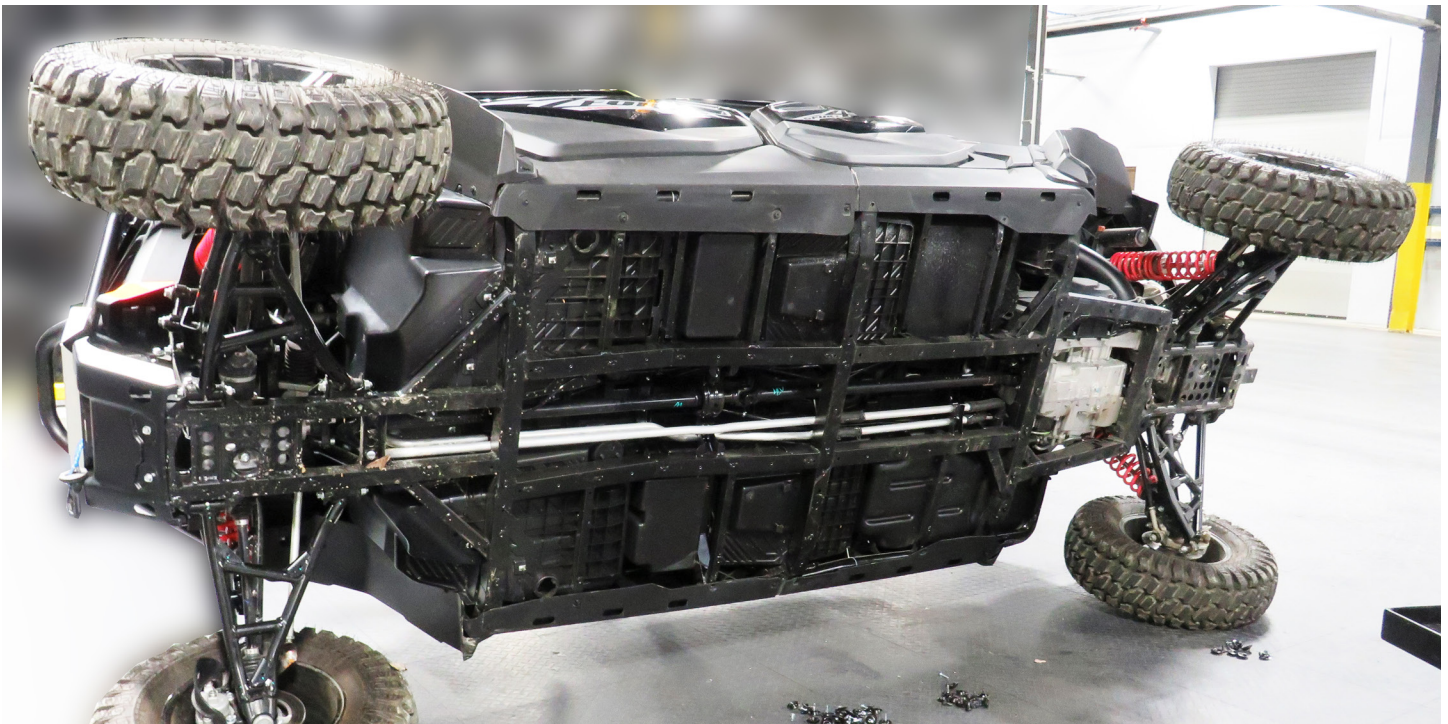


Fig.2

NOTE: Throughout this installation when installing the Bowl Washers with any of the screws, very lightly snug the screws to hold in place, but do NOT tighten them down until ALL plates are installed and adjusted to fit to your liking. Then tighten them all down secure.

3. The first plate to install is the **Front Nose Plate** as shown in **Fig.3**. Be sure to reference **Fig.1a** to see which hole locations to install the **Factory Screws** into first. After installing those screws in that plate along with the **Bowl Washers** provided in your kit, then move to the next skid plate. Remember, you will go back and put in all the **Self-Tapping Screws** after all plates have been installed using the **Factory Screws**. See **Fig.3**.



Fig.3

4. Next, install the **Center Middle Plate** right behind the one you just installed, also using **Factory Screws** and **Bowl Washers** from your kit. See **Fig.4**. Again, reference **Fig.1a** for hole locations.

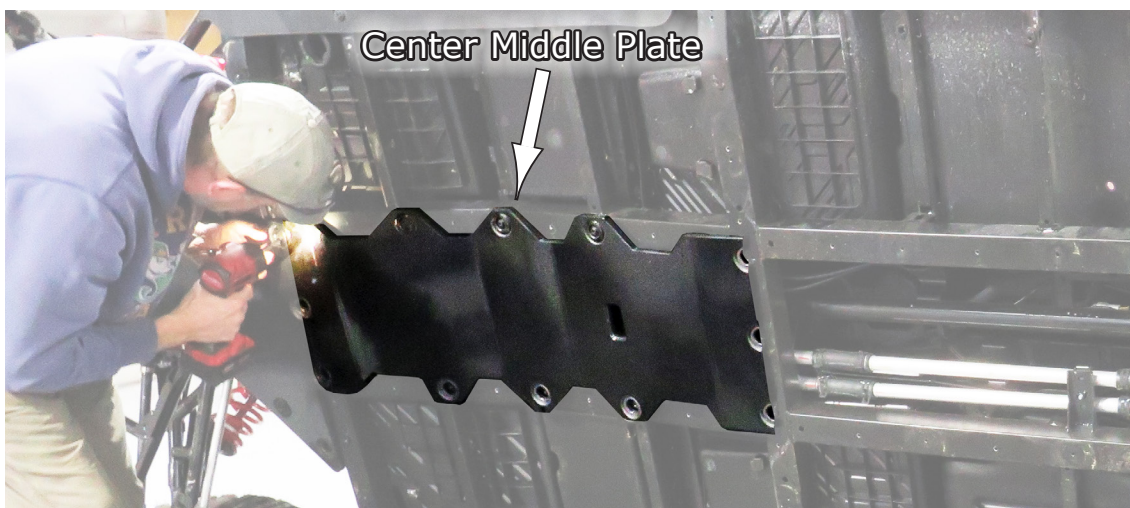


Fig.4

5.After that one, then install the other **Rear Center Middle Plate** right behind the one you just installed using the **Bowl Washers** and **Factory Screws**, referencing **Fig.1** for hole locations. See **Fig.5a**. Then install the **Square Plate** shown in **Fig.5b**. Again just lightly snug the screws.



Fig.5a

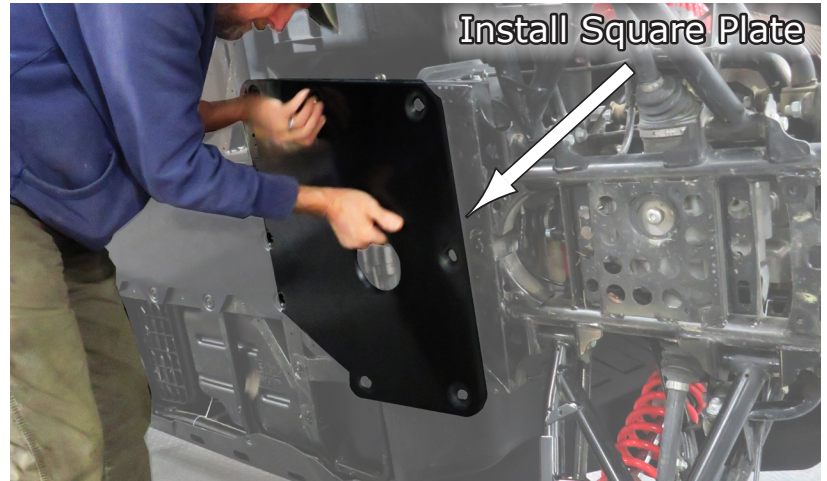
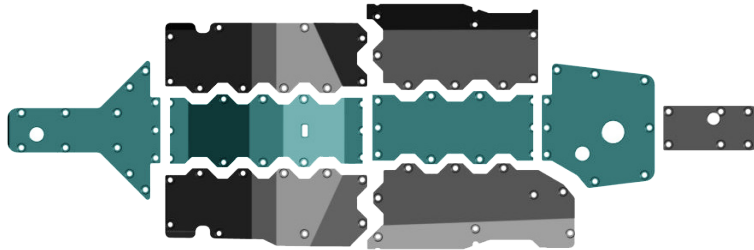


Fig.5b

At this point, you will have installed the center plates except the last small one you will install next, as shown in the illustration below. Installed Panels are colored.



6.Now install the last **Rear Small Plate** for the middle section with the same hardware as the previous plates in the location shown in **Fig.6a-b**. (Reference **Fig.1** for Factory Screw locations)

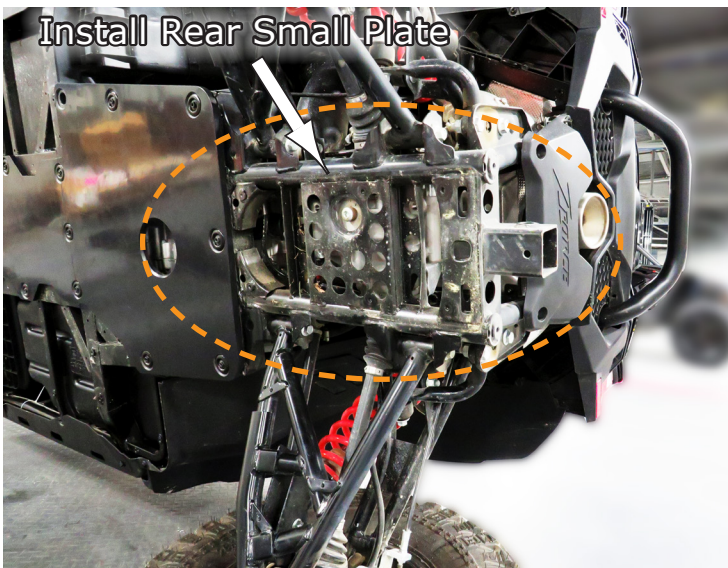


Fig.6a

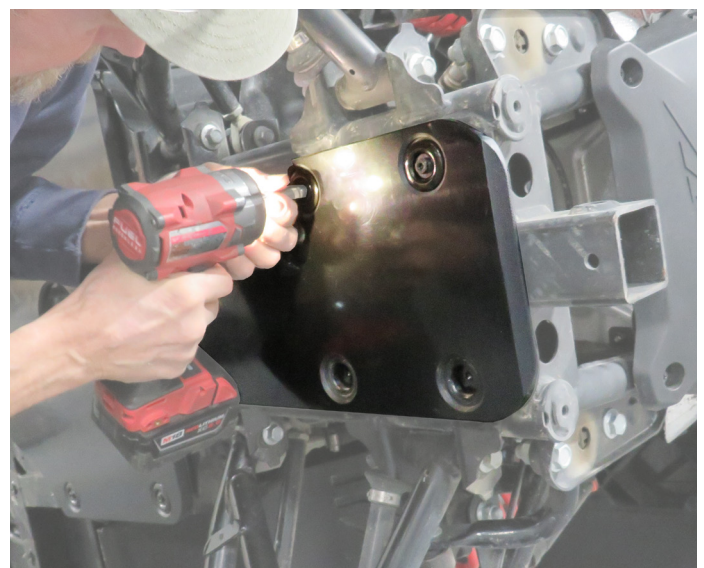


Fig.6b

7. Now you need to install the **Side Skid Plates** to the vehicle. When doing this, notice that the plates slip under the side panels shown in **Fig.7a**, so you will need to loosen the screws in the **Side Panels** in order to lift the panels up to slip the Skid Plates under them. Then install the Skid Plate, **Fig.7b**, referencing **Fig.1** for **Factory Screw Locations** for this plate.

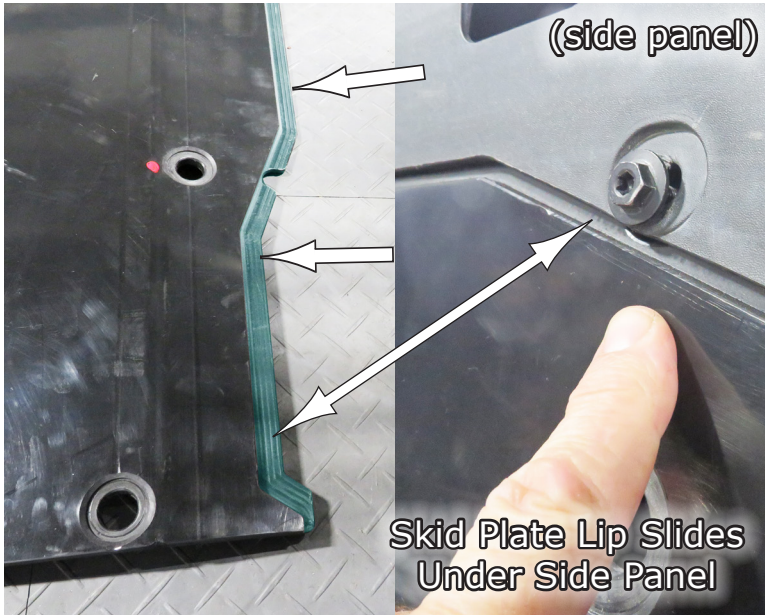


Fig.7a



Fig.7b



8. Then, move to the other side of the vehicle and install the **Skid Plate** on the side closest to the rear as shown in **Fig.8a**. **Fig.8b** shows the lip of the Skid Plate sliding under the side panel on that side as well. Reference **Fig.1** for **Factory Screw Locations** for this plate.

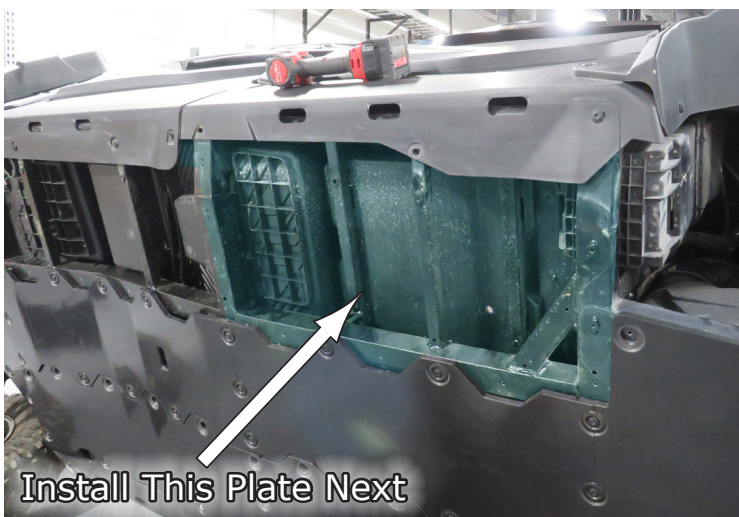


Fig.8a



Fig.8b

9. Now install the last side **Skid Plate** location as shown in **Fig.9a**. And install the last of the **Factory Screws** into this plate as shown in **Fig.9b**. Reference **Fig.1** for **Factory Screw Locations** for this last plate.

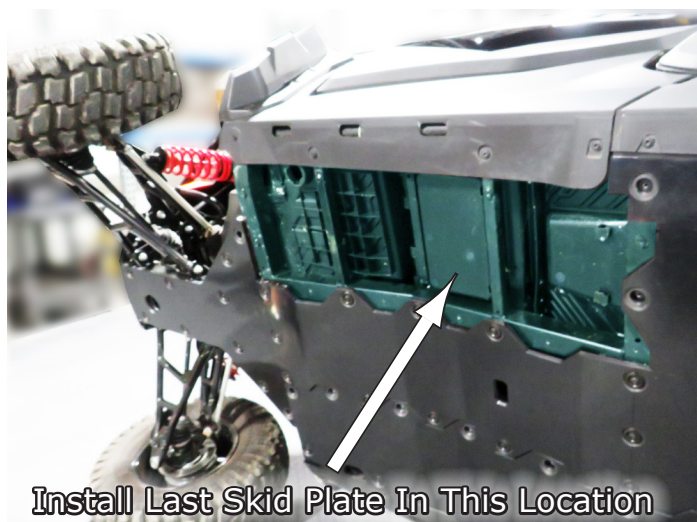


Fig.9a

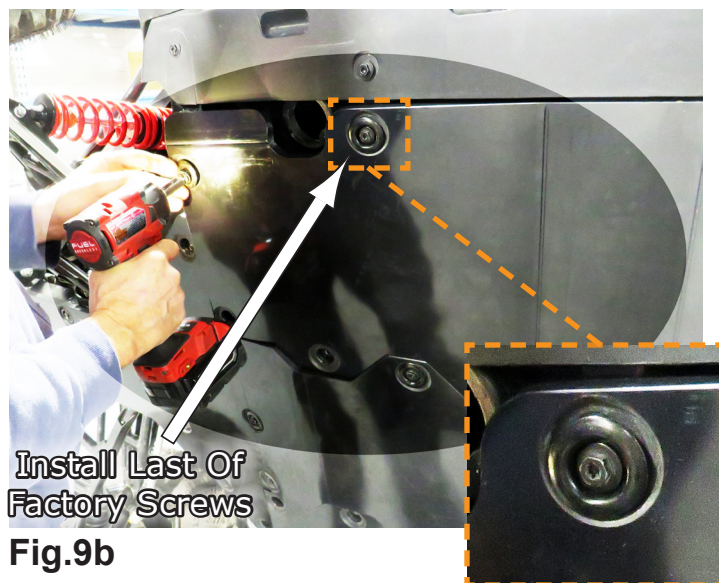


Fig.9b

10. After all the factory screws are installed and all the plates are on, now you will need to install the **Self-Tap Screws** and **Bowl Washers** provided in your kit to the remaining holes per **Fig.1b**.

However, before you do that you will need to pre-drill the remaining holes with the 5mm drill Bit provided in your kit so that you can use the Self-Tap Screws from your kit.

Tip: When drilling the holes thru, it may be easier for you to center the holes by placing a **Bowl Washer** in the **Skid Plate Hole** and use the hole in the Washer to start or mark the centered drill location. See **Fig.10**. Do this with each remaining hole location.

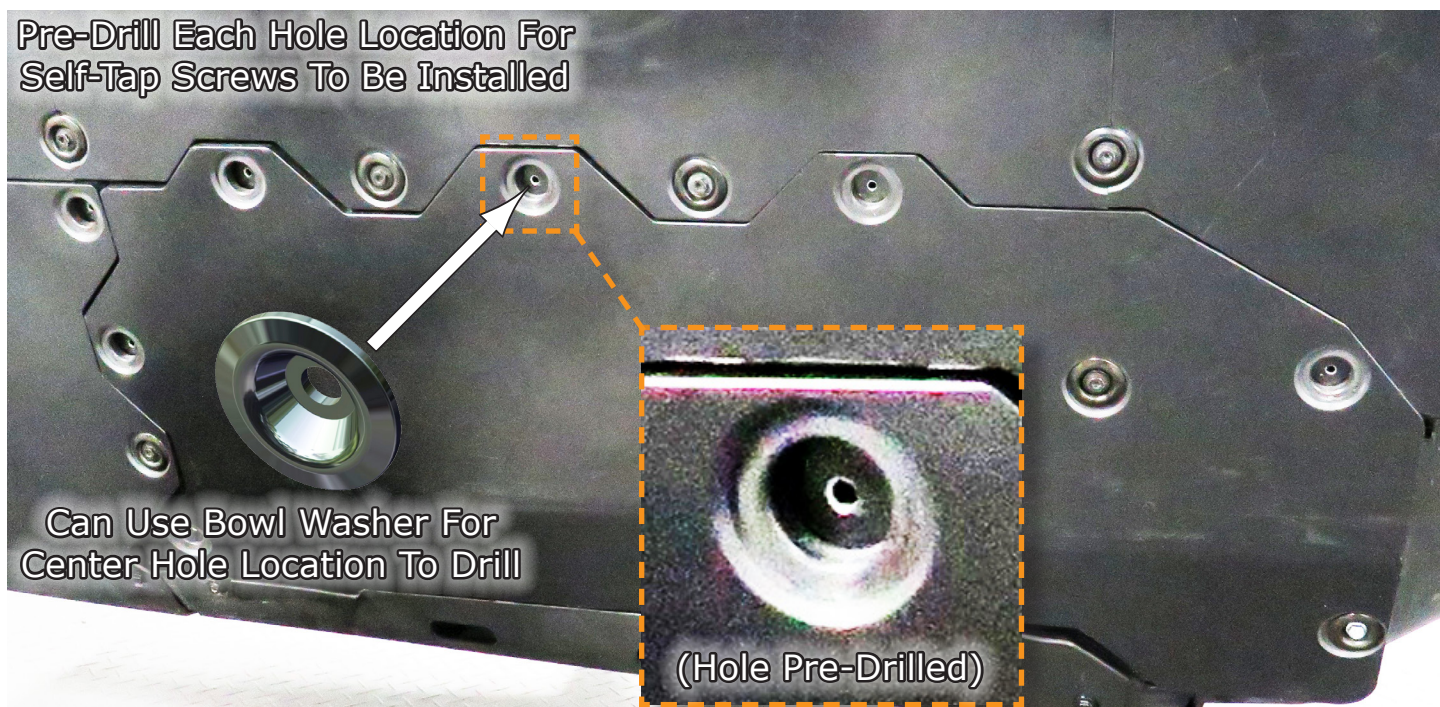


Fig.10

11. Continue to install each Skid Plate using the provided hardware in your kit. Once all screws are threaded in place with the Skid Plates, go back and make any adjustments to the plates if needed. After you've made your adjustments, NOW go back and tighten down all screws secure.

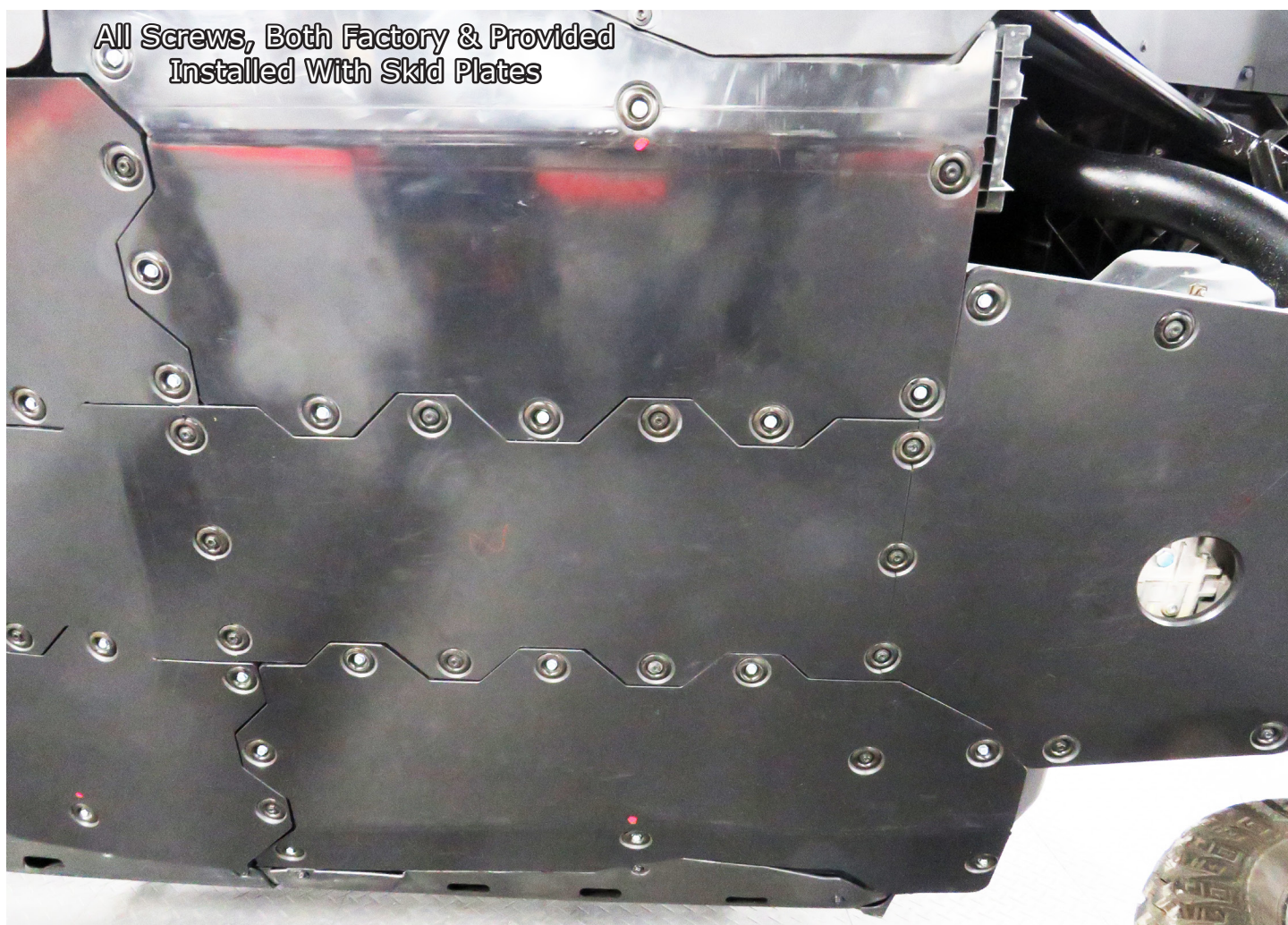


Fig.11





Liability Statement

SuperATV's® products are designed to best fit user's ATV/UTV under stock conditions. Adding, modifying, or fabricating any factory or aftermarket parts will void any warranty provided by SuperATV® and is not recommended. SuperATV's® products could interfere with other aftermarket accessories. If user has aftermarket products on machine, contact SuperATV® to verify that they will work together.

Although SuperATV® has thousands of satisfied customers, user should be aware that installing lift kits, long travel, or suspension kits, tires, etc. will change the ride of machine and may increase maintenance and part wear. Operating any off-road machine while, or after, consuming alcohol and/or drugs increases risk of bodily harm or death. No warranty or representation is made as to this product's ability to protect user from severe injury or death. SuperATV® urges operators and occupants to wear a helmet and appropriate riding gear at all times.

By purchasing and installing SuperATV® products, user agrees that should damages occur, SuperATV® will not be held responsible for loss of time, use, labor fees, replacement parts, or freight charges. SuperATV®, nor any 3rd party, will not be held responsible for any direct, indirect, incidental, special, or consequential damages that result from any product purchased from SuperATV®. The total liability of seller to user for all damages, losses, and causes of action, if any, shall not exceed the total purchase price paid for the product that gave rise to the claim.

SuperATV® will warranty only parts provided by SuperATV®. Any damage or problems with OEM housings, bearings, seals, or other manufacturers' products will not be covered by SuperATV®. SuperATV® parts and products are not warranted if item was not installed properly, misused, or modified.

Installing, adding, modifying, or fabricating any factory or aftermarket product to your ATV/UTV may violate certain local, state, and federal laws. Be advised that laws vary depending on town, city, county, state, etc. Use of certain products on public streets, roads, or highways may be in violation law. The Buyer is solely and exclusively legally and personally responsible for any violation of the law by the installation or use of the product. You must abide by all local, state, and federal laws, including but not limited to vehicle safety, traffic laws, and ordinances. It is your responsibility to know the laws and how they apply to you.

The Buyer is responsible to fully understand the capability and limitations of his/her vehicle according to manufacturer specifications, warnings and instructions and agrees to hold SuperATV® harmless from any damage resulting from failure to adhere to such specifications, warnings and/or instructions. The Buyer is also responsible to obey all applicable federal, state, and local laws and ordinances when operating his/her vehicle while using this product, and the Buyer agrees to hold SuperATV® harmless from any violation thereof.

If you have any problems/questions on this kit, contact us by email
at Superatv.com.

Need help with your installation?



sales@superatv.com



www.superatv.com



1-855-743-3427



8:00am - 9:00pm EST M-Th
8:00am - 7:00pm EST Friday
9:00am - 2:00pm EST Saturday

*Thank You
For Choosing*



Like SuperATV on Facebook to keep up to date on new products!