

INSTALLATION INSTRUCTIONS

Grill Insert: GRL-CA-X3

- Please look through and read these instructions BEFORE starting so you understand what processes you'll be doing, and possible extra tools you may need.
- Do Not discard product packaging until installation is complete and functioning properly.



**M6x55
Button FT
(2pcs)**



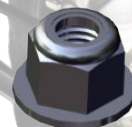
**M6x35
Button FT
(2pcs)**



**12.7x35
Spacer
(2pcs)**



**12.7x17
Spacer
(2pcs)**



**M6
Nylock Nut
(4pcs)**



1. The first thing you need to do is pair up the hardware before installing. The **M6x55 Button FT** goes with the **12.7x35 Spacer** and the **M6x35 Button FT** goes with the **12.7x17 Spacer**, and all have the **M6 Nylock Nuts** as shown in Fig.1.

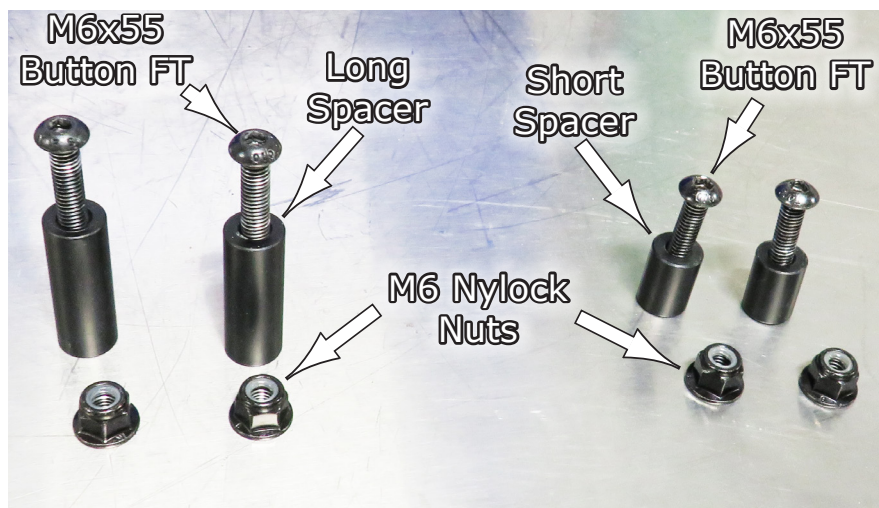


Fig.1

2. Now remove the hood as shown in Fig.2a, and then behind the factory grill there are two (2) screws, one on each side, that you need to remove. Fig.2b shows the screws behind the grill on the driver's side. Same location on the passenger's side as well. Remove them both. Then remove the factory grill as shown in Fig.2c-d.



Fig.2a



Fig.2b



Fig.2c



Fig.2d

3.Next, locate you new grill and take the **Shorter Screw and Spacer Sets** and install those at the **Top Middle** and **Bottom Middle** of the grill with the **Spacer** on the back side of the grill. See **Fig.3a**. **Fig.3b** shows it being installed on the vehicle at the bottom location, **Fig.3c** shows the short set being installed in the upper location. Leave these a little loose until the others are installed.



Fig.3a



Fig.3b



Fig.3c

4.After the middle location screws are in place, now locate the **Longer Screw and Spacer** sets and install them in each upper left and right corners of the grill as shown in **Fig.4a-b**. Then tighten all screws securely & replace the hood.





Liability Statement

SuperATV's® products are designed to best fit user's ATV/UTV under stock conditions. Adding, modifying, or fabricating any factory or aftermarket parts will void any warranty provided by SuperATV® and is not recommended. SuperATV's® products could interfere with other aftermarket accessories. If user has aftermarket products on machine, contact SuperATV® to verify that they will work together.

Although SuperATV® has thousands of satisfied customers, user should be aware that installing lift kits, long travel, or suspension kits, tires, etc. will change the ride of machine and may increase maintenance and part wear. Operating any off-road machine while, or after, consuming alcohol and/or drugs increases risk of bodily harm or death. No warranty or representation is made as to this product's ability to protect user from severe injury or death. SuperATV® urges operators and occupants to wear a helmet and appropriate riding gear at all times.

By purchasing and installing SuperATV® products, user agrees that should damages occur, SuperATV® will not be held responsible for loss of time, use, labor fees, replacement parts, or freight charges. SuperATV®, nor any 3rd party, will not be held responsible for any direct, indirect, incidental, special, or consequential damages that result from any product purchased from SuperATV®. The total liability of seller to user for all damages, losses, and causes of action, if any, shall not exceed the total purchase price paid for the product that gave rise to the claim.

SuperATV® will warranty only parts provided by SuperATV®. Any damage or problems with OEM housings, bearings, seals, or other manufacturers' products will not be covered by SuperATV®. SuperATV® parts and products are not warranted if item was not installed properly, misused, or modified.

Installing, adding, modifying, or fabricating any factory or aftermarket product to your ATV/UTV may violate certain local, state, and federal laws. Be advised that laws vary depending on town, city, county, state, etc. Use of certain products on public streets, roads, or highways may be in violation law. The Buyer is solely and exclusively legally and personally responsible for any violation of the law by the installation or use of the product. You must abide by all local, state, and federal laws, including but not limited to vehicle safety, traffic laws, and ordinances. It is your responsibility to know the laws and how they apply to you.

The Buyer is responsible to fully understand the capability and limitations of his/her vehicle according to manufacturer specifications, warnings and instructions and agrees to hold SuperATV® harmless from any damage resulting from failure to adhere to such specifications, warnings and/ or instructions. The Buyer is also responsible to obey all applicable federal, state, and local laws and ordinances when operating his/her vehicle while using this product, and the Buyer agrees to hold SuperATV® harmless from any violation thereof.

If you have any problems/questions on this kit, contact us by email at [Superatv.com](mailto:sales@superatv.com).

Need help with your installation?



sales@superatv.com



www.superatv.com



1-855-743-3427



8:00am - 9:00pm EST M-Th
8:00am - 7:00pm EST Friday
9:00am - 2:00pm EST Saturday

*Thank You
For Choosing*



Like SuperATV on Facebook to keep up to date on new products!