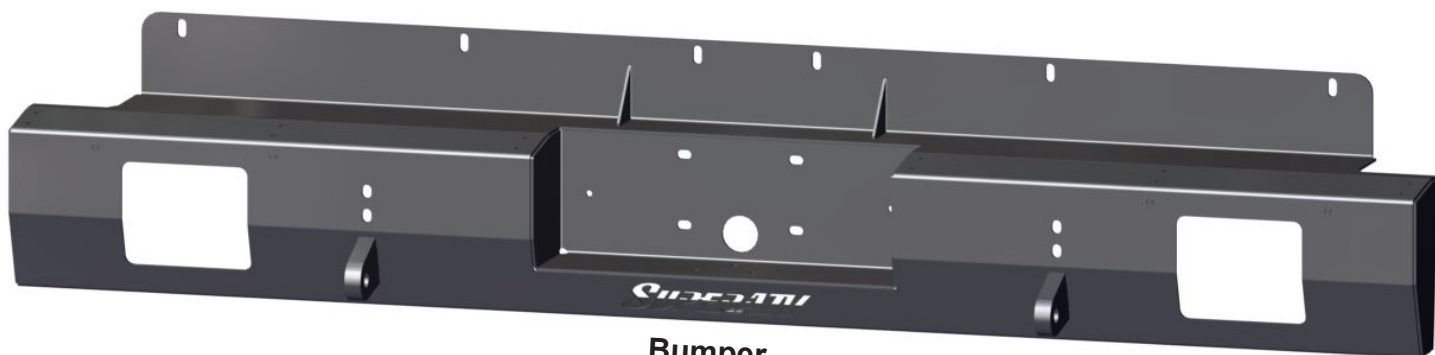


INSTALLATION INSTRUCTIONS

Rear Bumper: RBG-K-MULEFXT

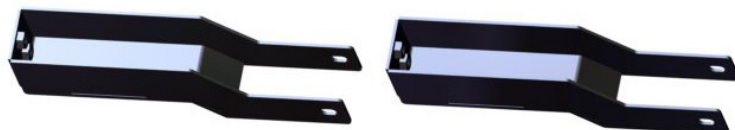
- Please look through and read these instructions BEFORE starting so you understand what processes you'll be doing, and possible extra tools you may need.
- Do Not discard product packaging until installation is complete and functioning properly.



Bumper



Dimple Plates



Support Braces



Blue
Vibra-tite



Rubber
Grommet



D-Ring Shackles



M12x60
Socket
Head
(2 pcs)



M10x25
Hex
Flanged
(4 pcs)



M8x25
Hex
Flanged
(4 pcs)



M6x20
Hex
Flanged
(2 pcs)



M6x16
Button
Head
(12 pcs)



M10
Nylock
Nut
(2 pcs)



M8
Flanged
Nylock Nut
(4 pcs)



M6
Split Lock
Washer
(12 pcs)

1.First, you need to tilt the bed in the upright position as you will need to remove the strut cylinder underneath. See Fig.1a-b. Remove the hardware retaining the top end of the cylinder and set aside to reinstall later. Then set bed back down and let **Cylinder** lay out of the way as shown in **Fig.1c**.

NOTE: After cylinder is removed, the bed will be quite heavy when lowering it back down. Use Caution.

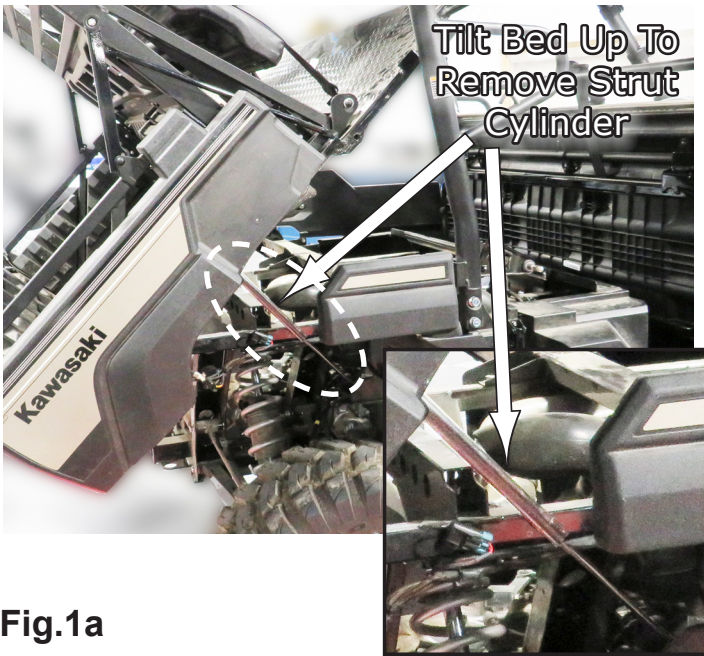


Fig.1a

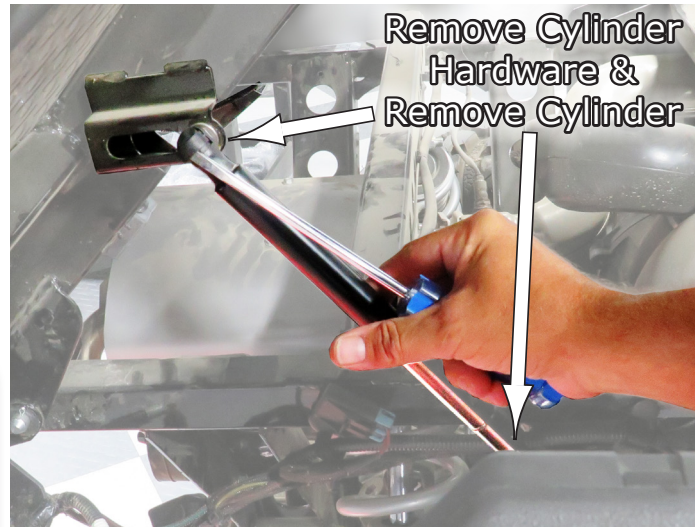


Fig.1b

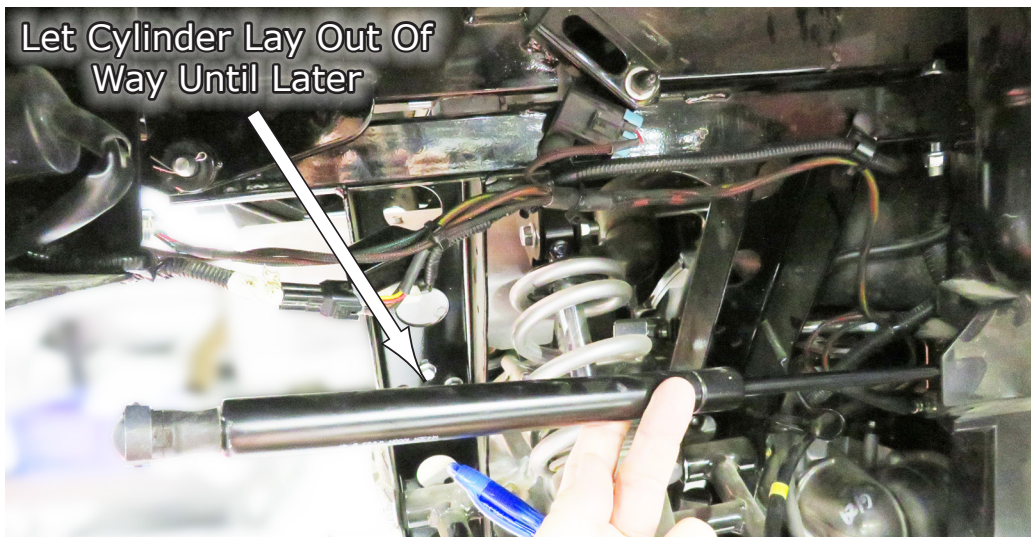


Fig.1c

2.The next thing you need to do is remove the **Outer Side Bed Panels** from the bed. There are Four (4) Bolts on the inside of each side to remove in order to remove the panels as shown in **Fig.2a**. **Fig.2b-c** show the panel on the vehicle and also removed. Repeat for the opposite side.

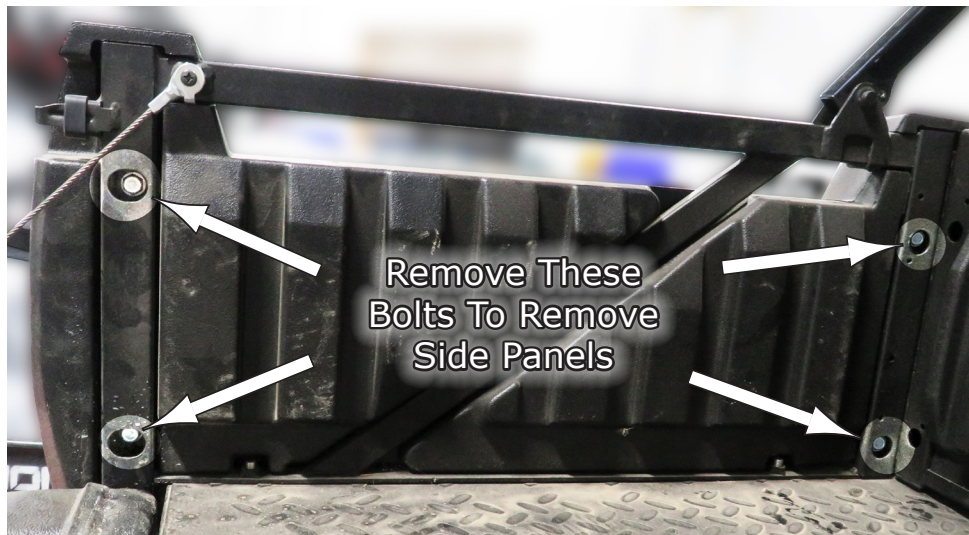


Fig.2a



Fig.2b

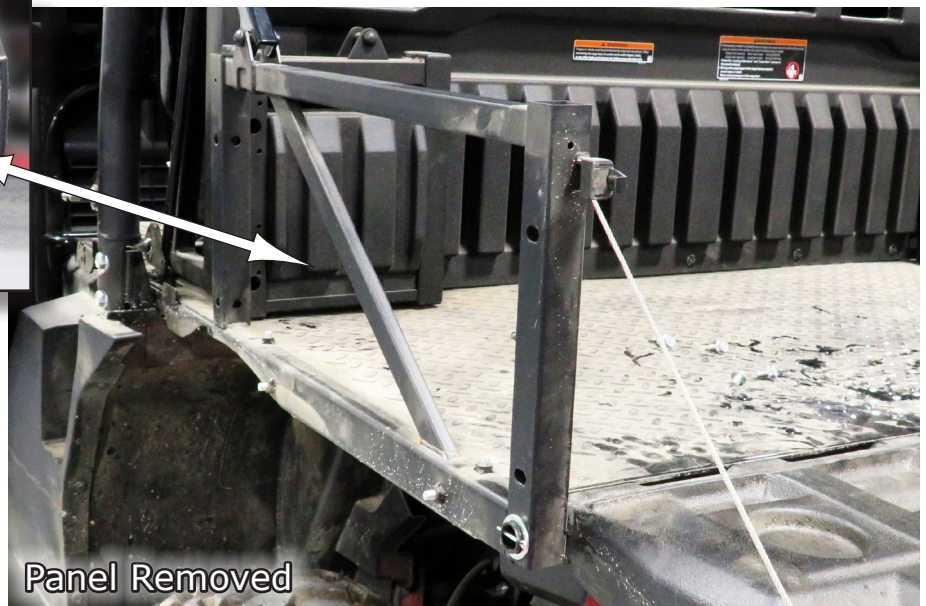


Fig.2c

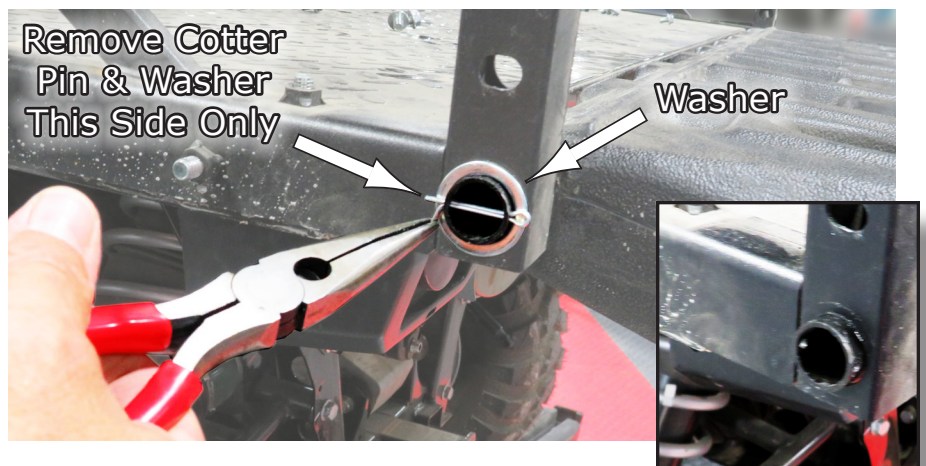


Fig.3

3.After the side panel are removed, now you will need to remove the **Tail Gate**. To do this, remove the **Cotter Pin** and **Washer** on the Driver's Side as shown in **Fig.3**.

4. Now you need to remove the **Restraining Cables** from the **Tail Gate** on both sides by removing the screws holding it to the sides as shown in **Fig.4a-b**.



Fig.4a



Fig.4b

5. Next you need to pull the gate rod out from the passenger's side out most of the way but not all of the way so the right side of the gate can remain hung on the rod. Then angle the gate out and pull the gate off the rod as shown in **Fig.5a-b**.

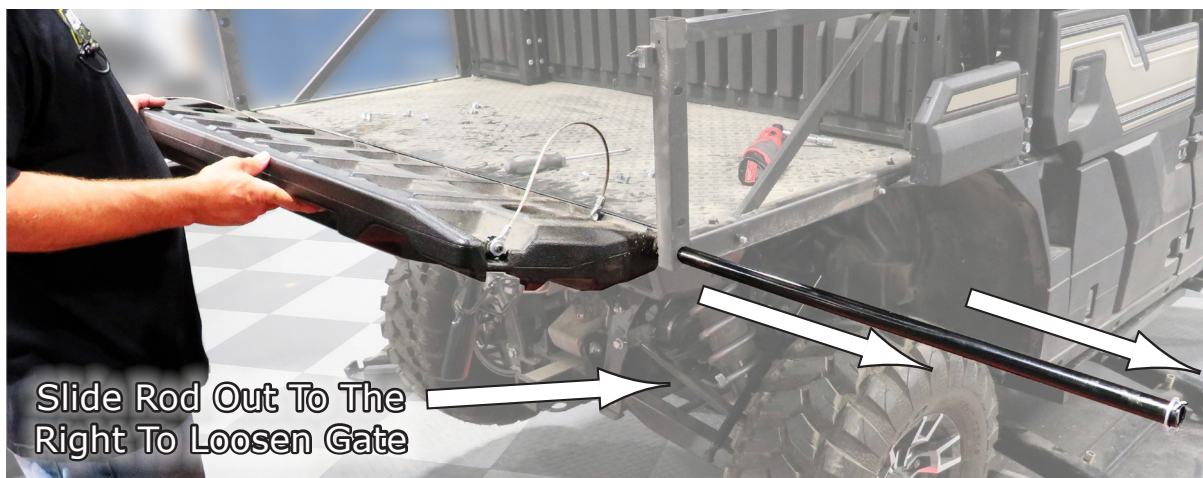


Fig.5a

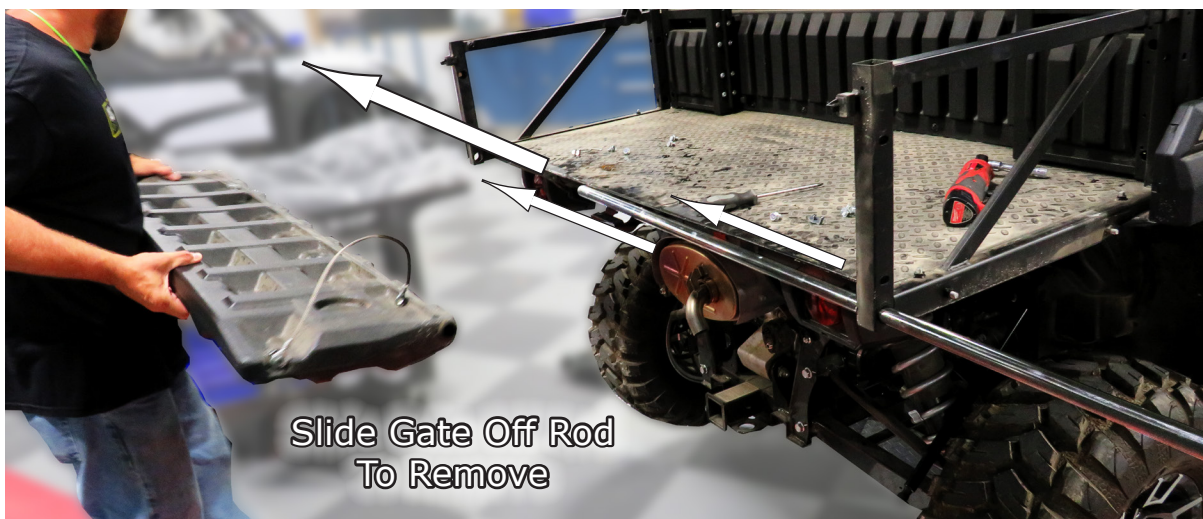


Fig.5b

6. Now you need to remove the **Factory Tail Lights** in order to install your **New Bumper**. So find the cables coming from the tail lights and unplug them, both left & right, as shown in **Fig.6a-b**.



Fig.6a

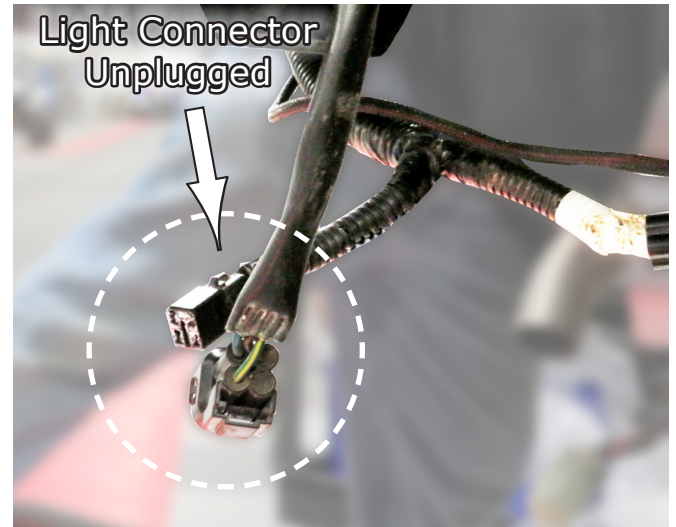


Fig.6b

7. After the connectors are unplugged, now remove the **Tail Light Assemblies** by removing the two (2) bolts, one on each side of the light, as shown in **Fig.7a-b**. Repeat for opposite side of vehicle.



Fig.7a



Fig.7b

8. The next thing you will need to do is to install the tail light fixtures, you just took off, onto your new Bumper. See **Fig.8**. Your **Factory Tail Light Fixtures** will mount to the **Tabs** on the inside of the Bumper using the **Factory Hardware** you removed previously, as shown in **Fig.8**. The next steps will show you mounting them in more detail.

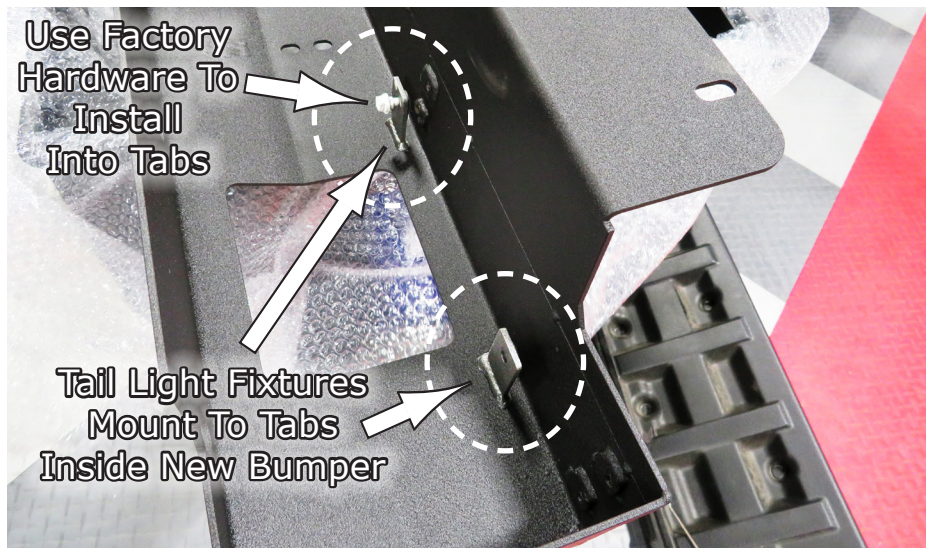


Fig.8

9. **Fig.9a** shows the **Bumper Tabs** to mount the **Factory Light Fixtures** to. **Fig.9b** shows the fixture installed, and **Fig.9c-d** show a closer view of your **Factory Hardware** mounting the fixture onto your **New Bumper**.

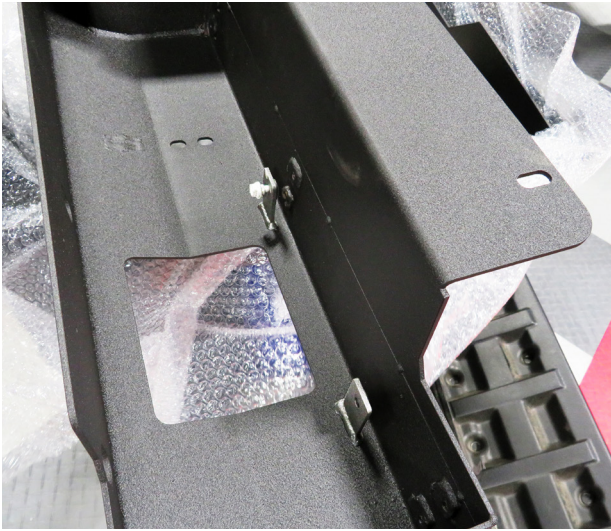


Fig.9a

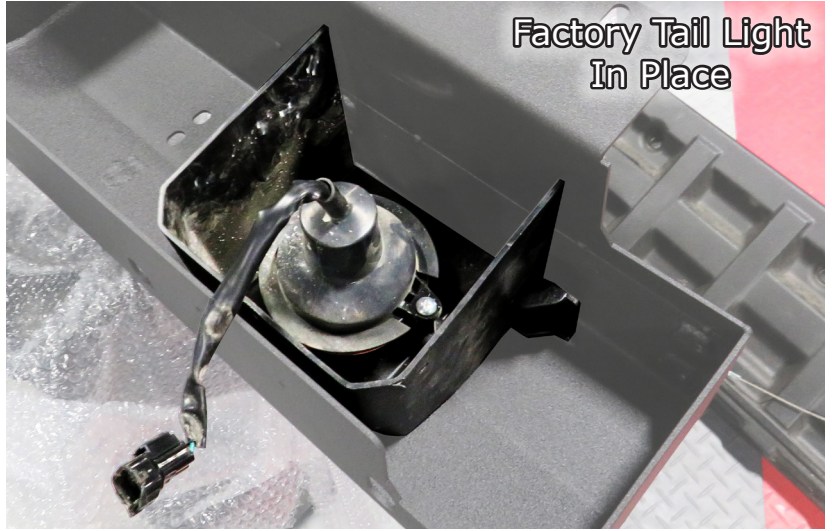


Fig.9b

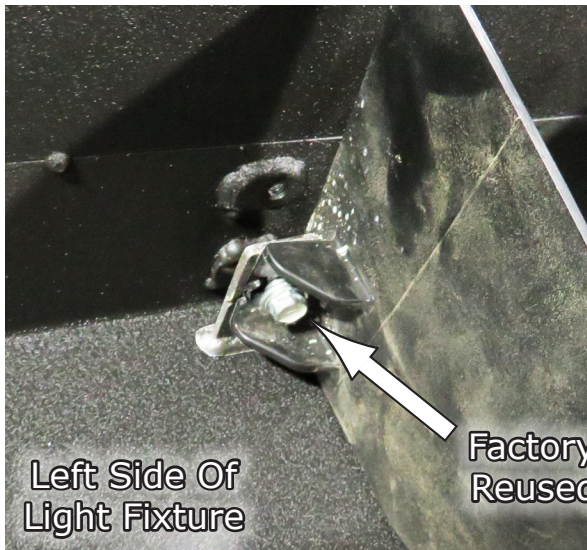


Fig.9c



Fig.9d

10. The next thing is to remove the “Handle” attached to the end of the bed as shown in **Fig.10a-b**. Remove the **Factory Bolts**, one on each side, and set aside.

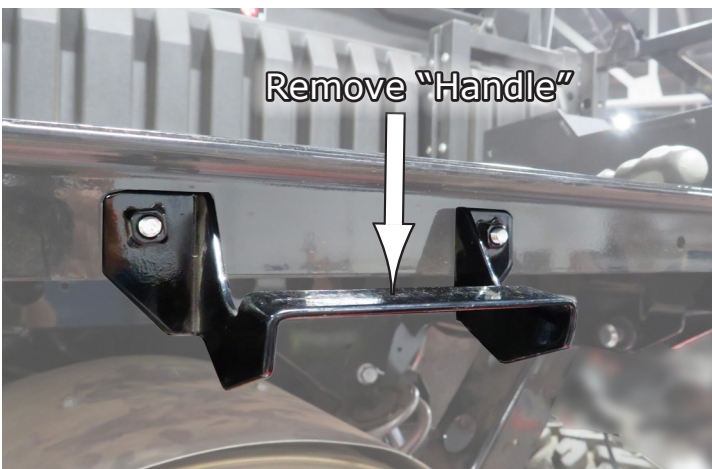


Fig.10a

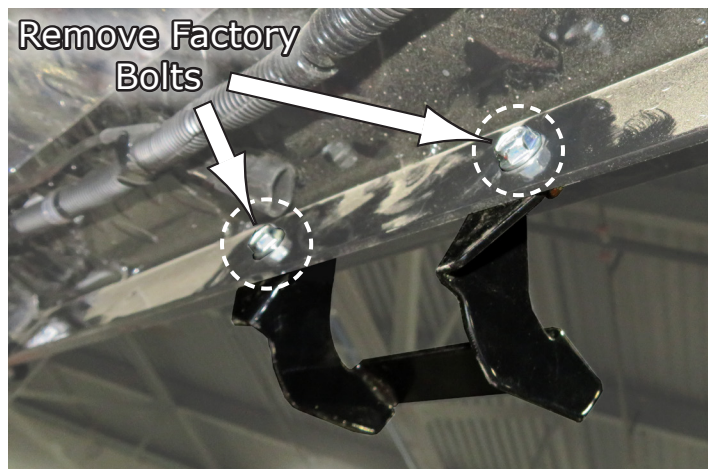


Fig.10b

11. Now locate the **Support Braces**, See **Fig.11a**. You will install these next, but you first need to remove a couple pins. These are the hinge pins that allow the bed to pivot up and down. Find them up underneath as shown in **Fig.11b-c**. Then remove the Cotter Pin, **Fig.11b**, and knock the Pin out of the clevis, see **Fig.11c-d**.

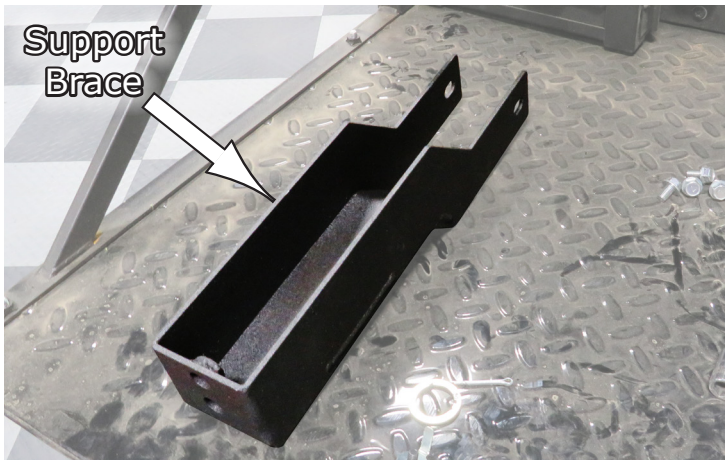


Fig.11a



Fig.11b

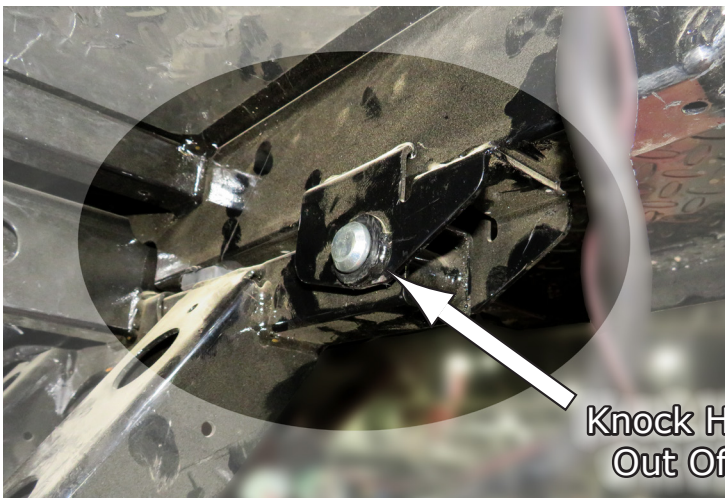


Fig.11c



Fig.11d

12. The next thing is to install the **Support Brackets** by using the **M12x60 Socket Head** bolts and **M10 Nylock Nuts** provided in your kit. Fit the **Support Bracket** over the clevis where you took the hinge pin out of as shown in **Fig.12a**, then attach by using the **M12 Socket Head** bolt and **Nylock Nut**. See **Fig.12b-d**.



Fig.12a

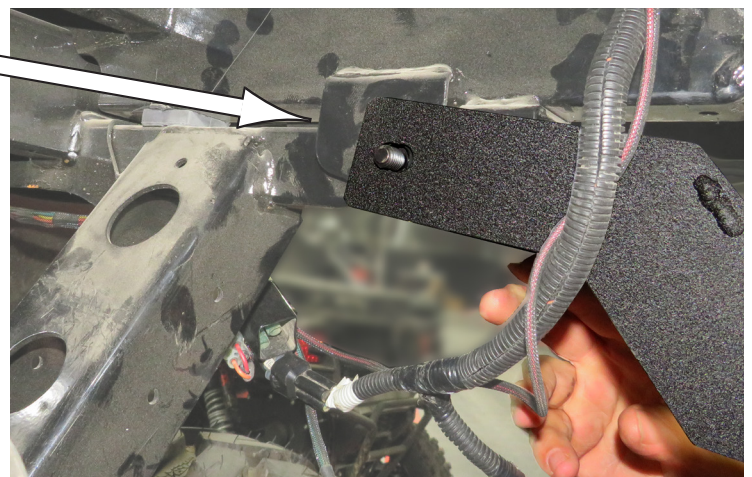


Fig.12b

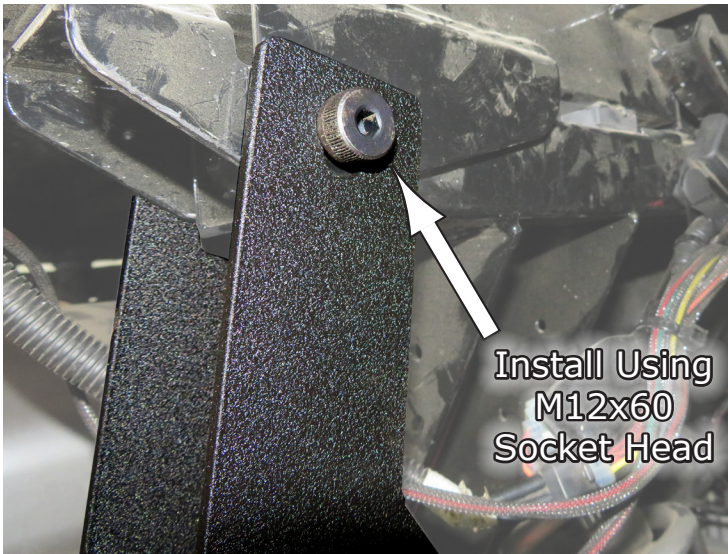


Fig.12c

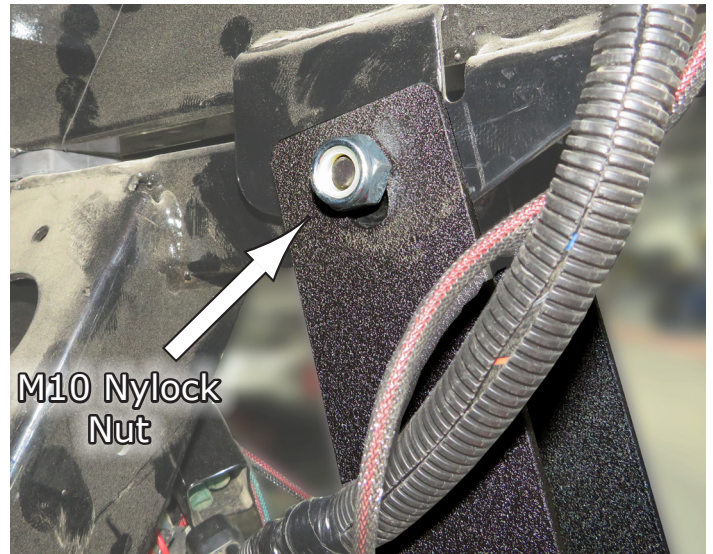


Fig.12d

13. Install both left and right **Support Brackets** and do not tighten the bolts yet, just let them hang down as you will next be installing the **Bumper** onto them. See Fig.13 below.

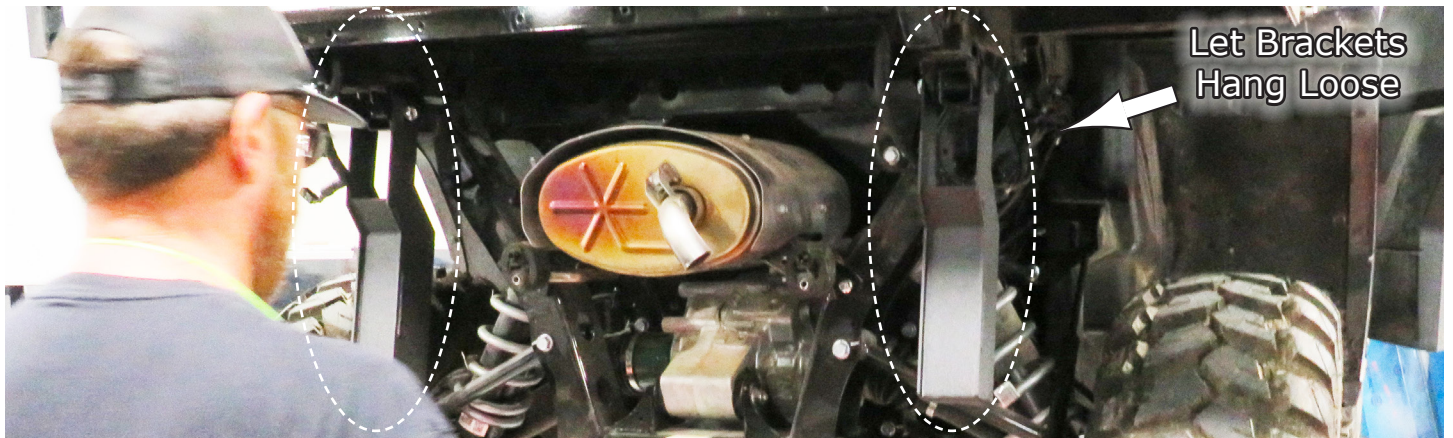


Fig.13



14. Now get the **Bumper** and hold it up to the Braces as shown in Fig.14a, and then lift it up into bumper position as shown in Fig.14b. You may need help with this as it is a little heavy.

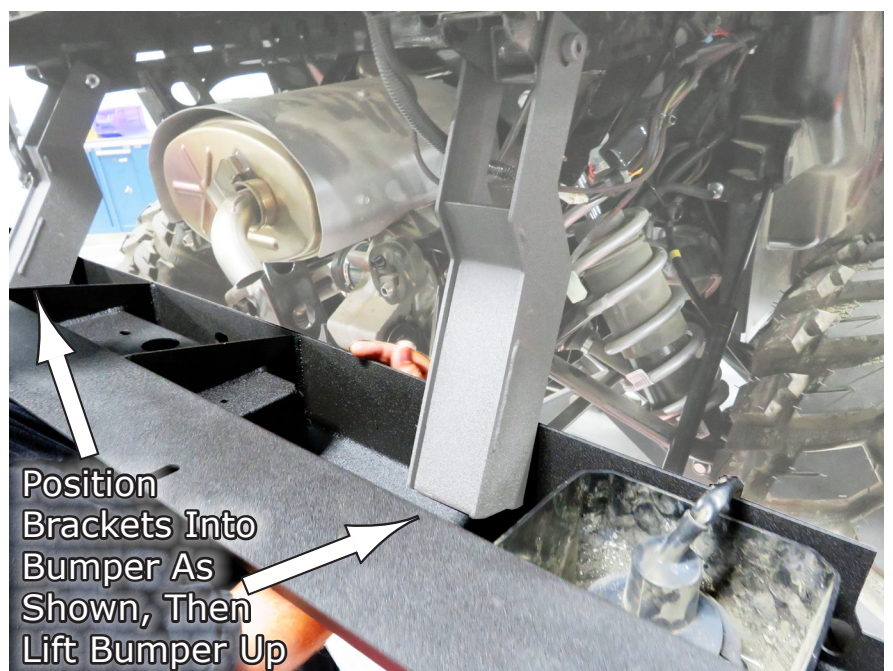


Fig.14a

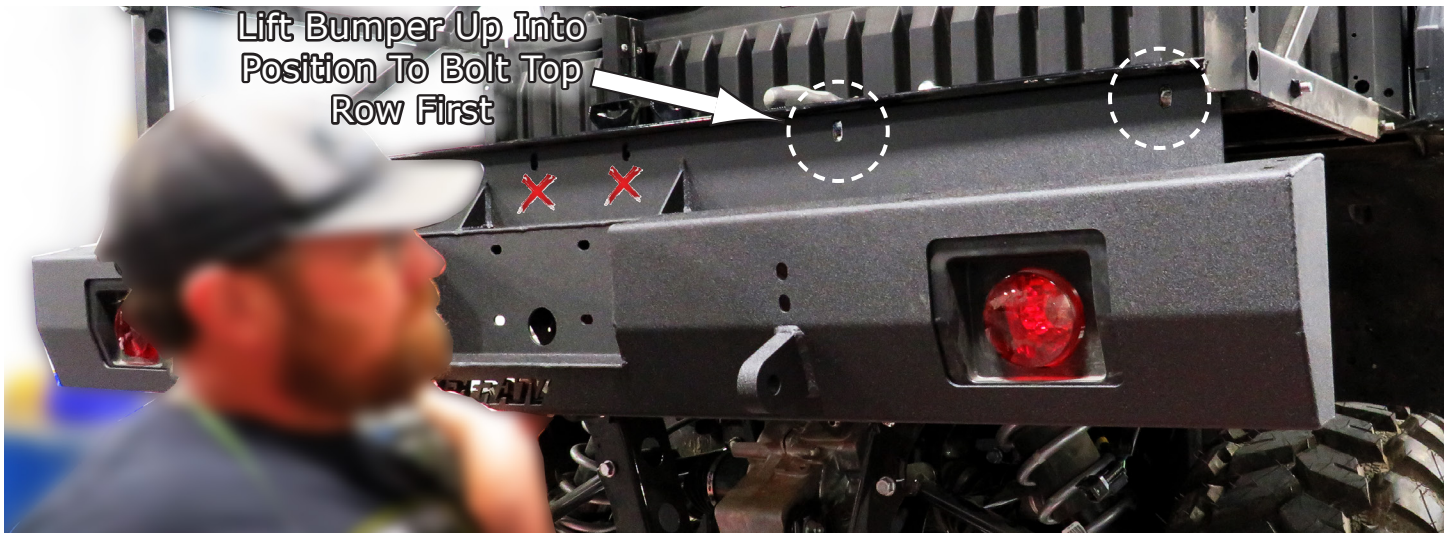


Fig.14b

15.After it's in position, It's easier to first insert one of the top row bolts to hold it up for you. Then hang the other side to hold it straight. Install all Four (4) **M8x25 Hex Flanged** top bolts and **M8 Flanged Nylock Nuts** but leave a little loose until all bolts are installed in the following steps. See Fig.15a. Fig.15b shows bolts into frame up underneath.



Fig.15a

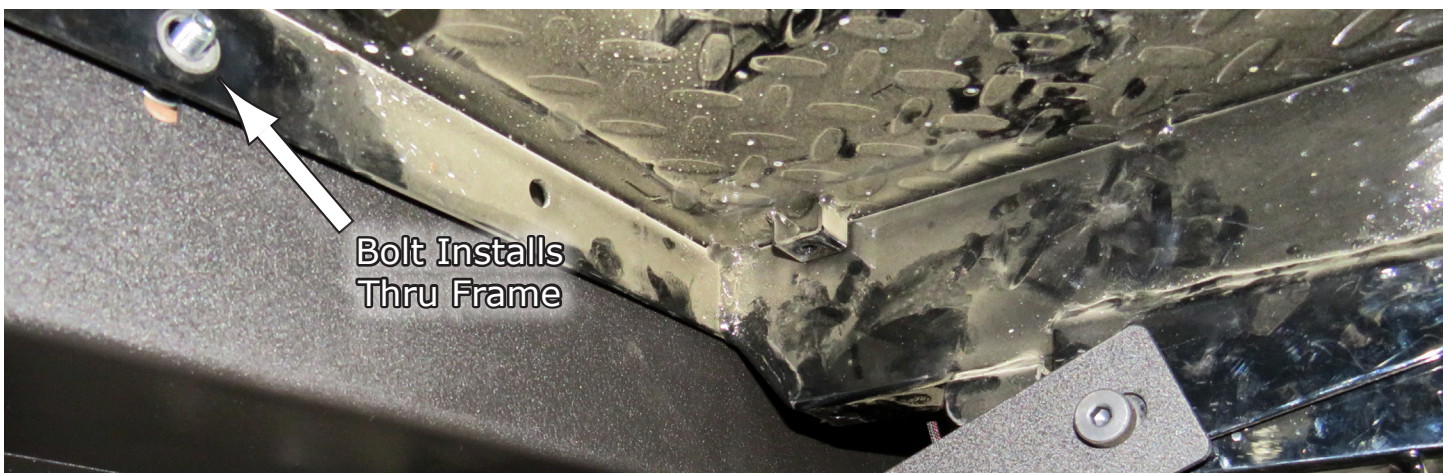


Fig.15b

16. Install the **M8x25 Hex Flanged Nylock Nuts** on those **Four (4) Bolts**. Two (2) each side of **Bumper**. Leave loose for now. See **Fig.16a**. **Fig.16b** shows the **Bolts** Installed to this point.

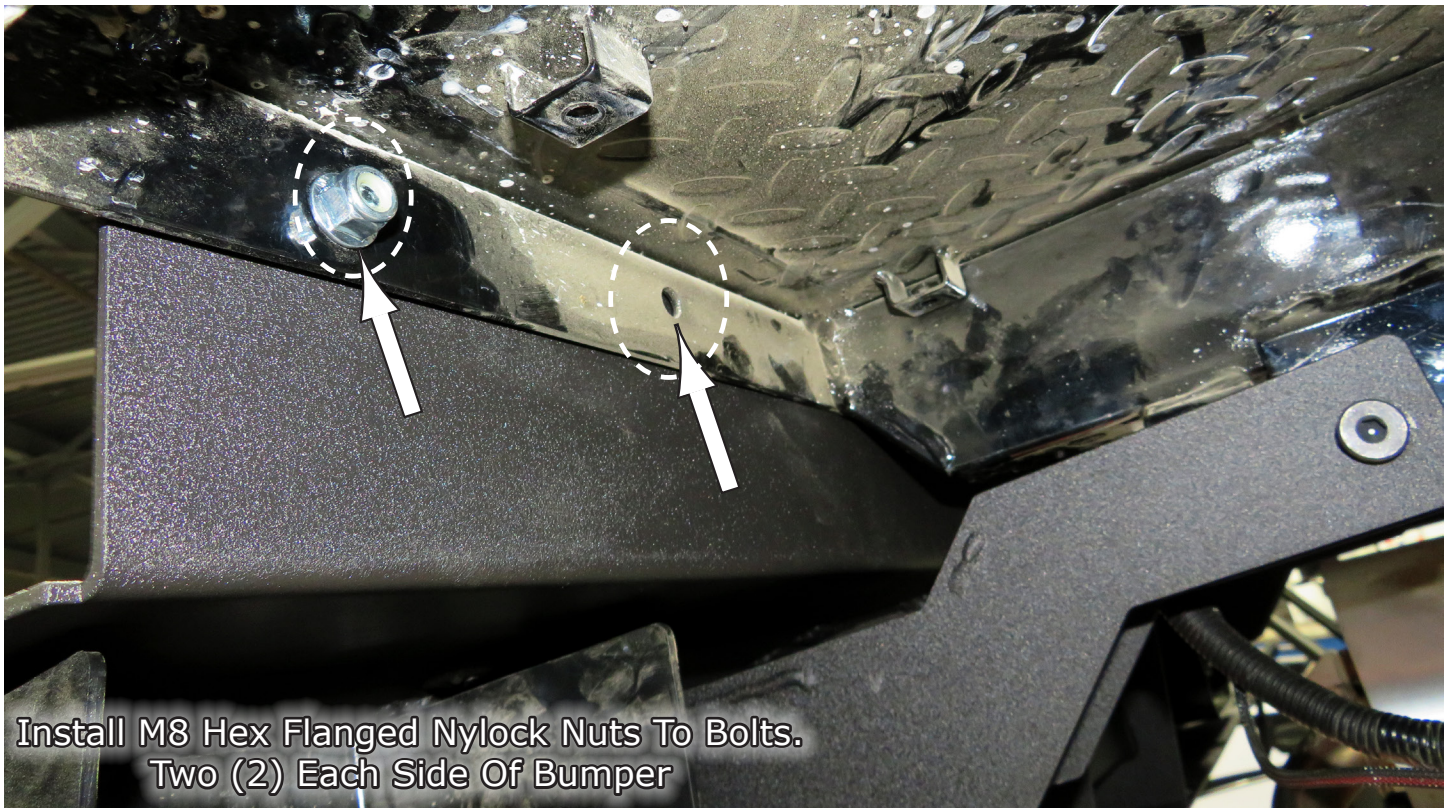


Fig.16a

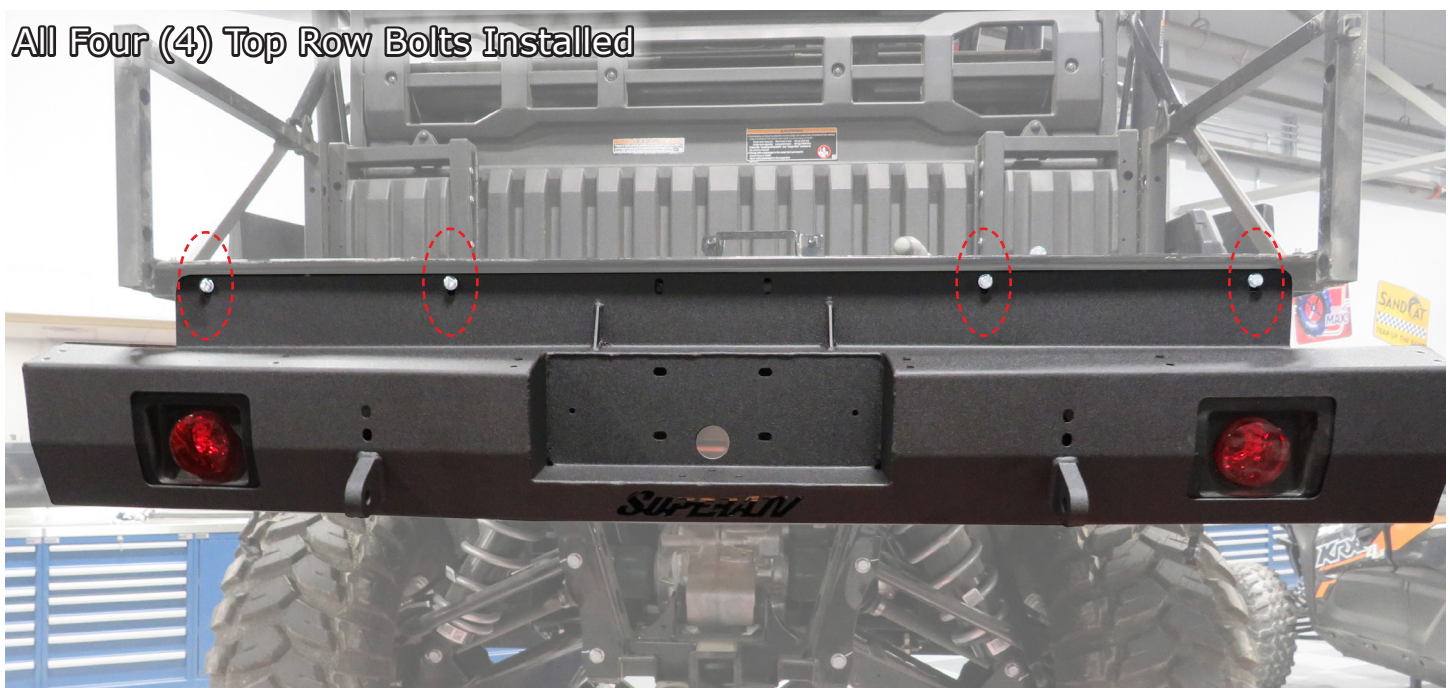


Fig.16b

17. Now, before finishing bolting up the **Bumper**, go ahead and install the **Factory “Handle”** back onto the **New Bumper** using the **M6x20 Hex Flanged Bolts** in your kit, as shown in **Fig.17**. These thread into the “**Handle**” and do not require any nuts. These install from up behind the Bumper as shown in **Fig.17a-b**.



Fig.17a



Fig.17b

18. After the “**Handle**” is installed, now you can finish to bolt up the rest of the **Bumper** by installing the **M10x25 Hex Flanged Bolts** into the **Braces** you installed previously. The **Braces** have **Welded Nuts** already on them, so you will not need to install nuts for these parts. See **Fig.18a-b**.

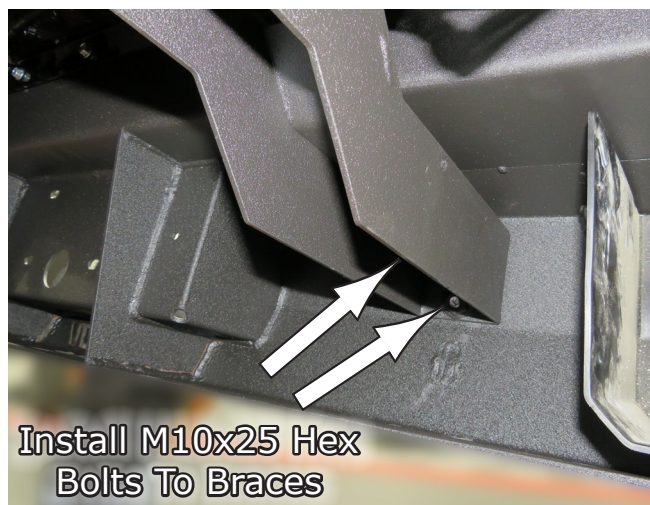


Fig.18a



Fig.18b

19. Now that all the bolts are installed, go back and tighten all bolts and nuts securely. Yours should look like the one in **Fig.19**.



Fig.19

20.The next thing you need to do is hook-up or reconnect the **Tail Light Harness Connector** ends that you disconnected previously as shown in **Fig.20**. Repeat for the other tail light.

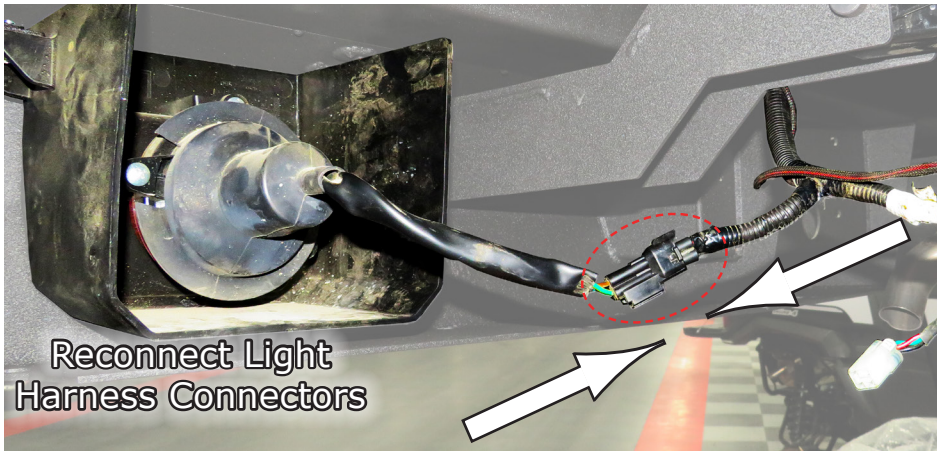


Fig.20

21.Now you're ready to reassemble the **Tail Gate**. Start by inserting the long **Gate Rod** back into the side of the frame, extending in about 1-2ft. You will feed the Tail Gate onto this end of the **Gate Rod** first, **Fig.21a**. Then slide Gate onto rod and slide over as shown in **Fig.21b**.



Fig.21a



Fig.21a

22.Then slide the rest of the **Rod** all the back thru the gate and again back thru the frame. Then re-install the **Washer** and **Cotter Pin** to secure the **Rod** in place. See **Fig.21a-b**.



Fig.22a



Fig.22b

23.Now you can re-install the **Outer Side Panels** back onto the machine, both sides, using the **Factory Hardware** you removed previously. See **Fig.23a-b**.

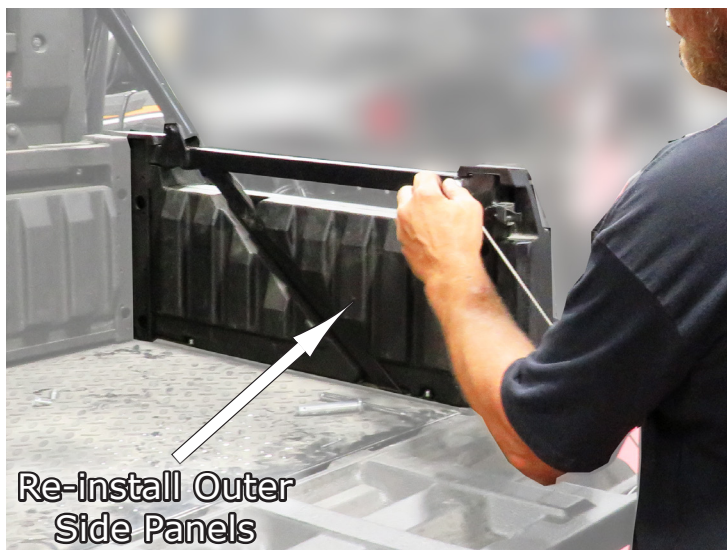


Fig.23a

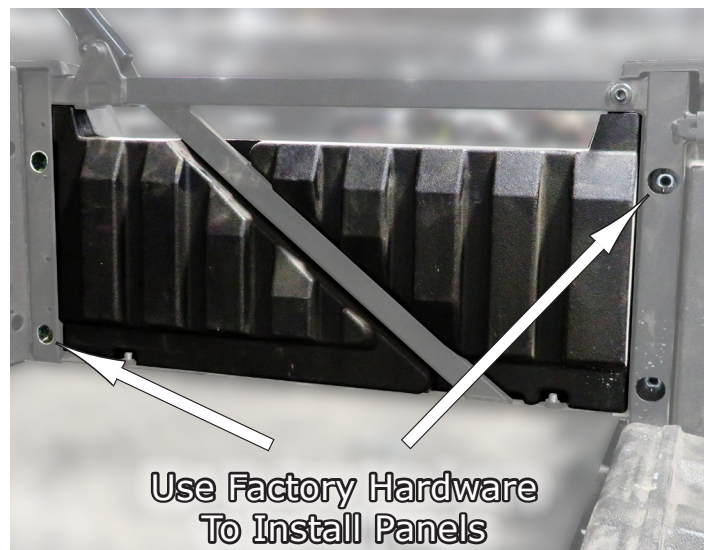


Fig.23b

24.Next, re-install the **Tail Gate Restraint Cables** using the factory hardware for both sides, See **Fig.24**.



Fig.24

25.Then find the **Dimple Plate** from your kit and install them onto the top side of the New Bumper using the **M6x16 Button Head Screws** and **M6 Split Lockwashers** also from your kit. See **Fig.25a-b**.



Fig.25a



Dimple Plate

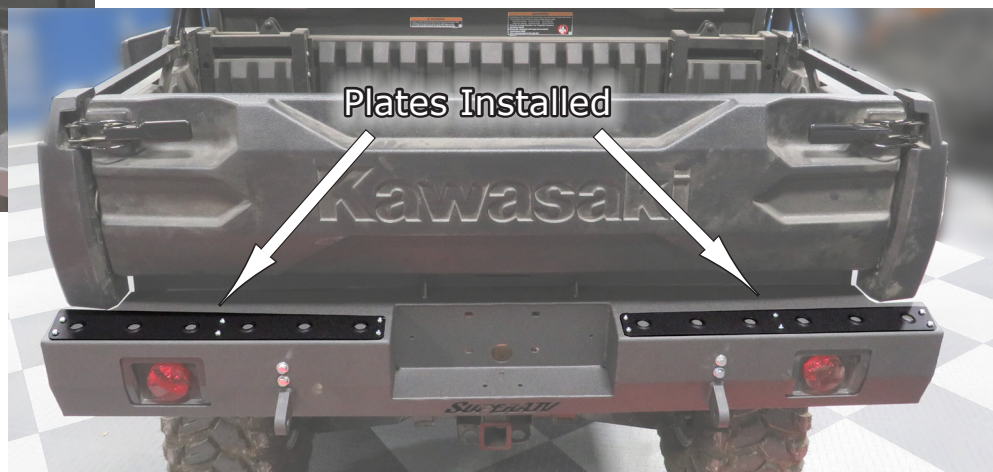


Fig.25b

NOTE:Be sure Dimples are UP when installing.



26. Now find the **Rubber Grommet** in your kit and install it in the large hole in the Bumper as shown in **Fig.26a-b**.

Install Rubber Grommet
Into Bumper Hole



Fig.26a

Grommet Installed



Fig.26b

27. Then install the **D-Ring Shackles** from your kit onto the **New Bumper** as shown in **Fig.27a-b**.

Install Shackles Into
Bumper Both Sides

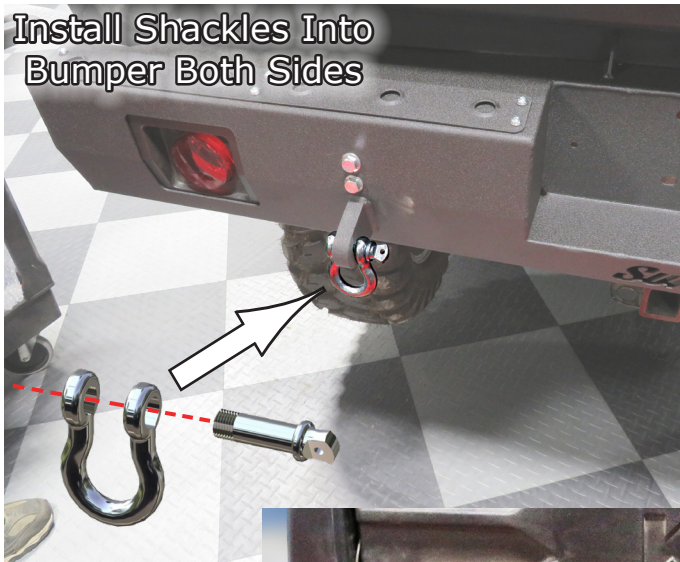


Fig.27a



Fig.27b

28. Now after all the previous steps have been completed, now reconnect the **Bed Cylinders** you previously disconnected, back onto the bed on both sides secure as shown here in **Fig.28**.



Fig.28

Liability Statement

SuperATV's® products are designed to best fit user's ATV/UTV under stock conditions. Adding, modifying, or fabricating any factory or aftermarket parts will void any warranty provided by SuperATV® and is not recommended. SuperATV's® products could interfere with other aftermarket accessories. If user has aftermarket products on machine, contact SuperATV® to verify that they will work together.

Although SuperATV® has thousands of satisfied customers, user should be aware that installing lift kits, long travel, or suspension kits, tires, etc. will change the ride of machine and may increase maintenance and part wear. Operating any off-road machine while, or after, consuming alcohol and/or drugs increases risk of bodily harm or death. No warranty or representation is made as to this product's ability to protect user from severe injury or death. SuperATV® urges operators and occupants to wear a helmet and appropriate riding gear at all times.

By purchasing and installing SuperATV® products, user agrees that should damages occur, SuperATV® will not be held responsible for loss of time, use, labor fees, replacement parts, or freight charges. SuperATV®, nor any 3rd party, will not be held responsible for any direct, indirect, incidental, special, or consequential damages that result from any product purchased from SuperATV®. The total liability of seller to user for all damages, losses, and causes of action, if any, shall not exceed the total purchase price paid for the product that gave rise to the claim.

SuperATV® will warranty only parts provided by SuperATV®. Any damage or problems with OEM housings, bearings, seals, or other manufacturers' products will not be covered by SuperATV®. SuperATV® parts and products are not warrantied if item was not installed properly, misused, or modified.

Installing, adding, modifying, or fabricating any factory or aftermarket product to your ATV/UTV may violate certain local, state, and federal laws. Be advised that laws vary depending on town, city, county, state, etc. Use of certain products on public streets, roads, or highways may be in violation law. The Buyer is solely and exclusively legally and personally responsible for any violation of the law by the installation or use of the product. You must abide by all local, state, and federal laws, including but not limited to vehicle safety, traffic laws, and ordinances. It is your responsibility to know the laws and how they apply to you.

The Buyer is responsible to fully understand the capability and limitations of his/her vehicle according to manufacturer specifications, warnings and instructions and agrees to hold SuperATV® harmless from any damage resulting from failure to adhere to such specifications, warnings and/ or instructions. The Buyer is also responsible to obey all applicable federal, state, and local laws and ordinances when operating his/her vehicle while using this product, and the Buyer agrees to hold SuperATV® harmless from any violation thereof.

If you have any problems/questions on this kit, contact us by email
Superatv.com.

Need help with your installation?



sales@superatv.com



www.superatv.com



1-855-743-3427



8:00am - 9:00pm EST M-Th
8:00am - 7:00pm EST Friday
9:00am - 2:00pm EST Saturday

*Thank You
For Choosing*



Like SuperATV on Facebook to keep up to date on new products!