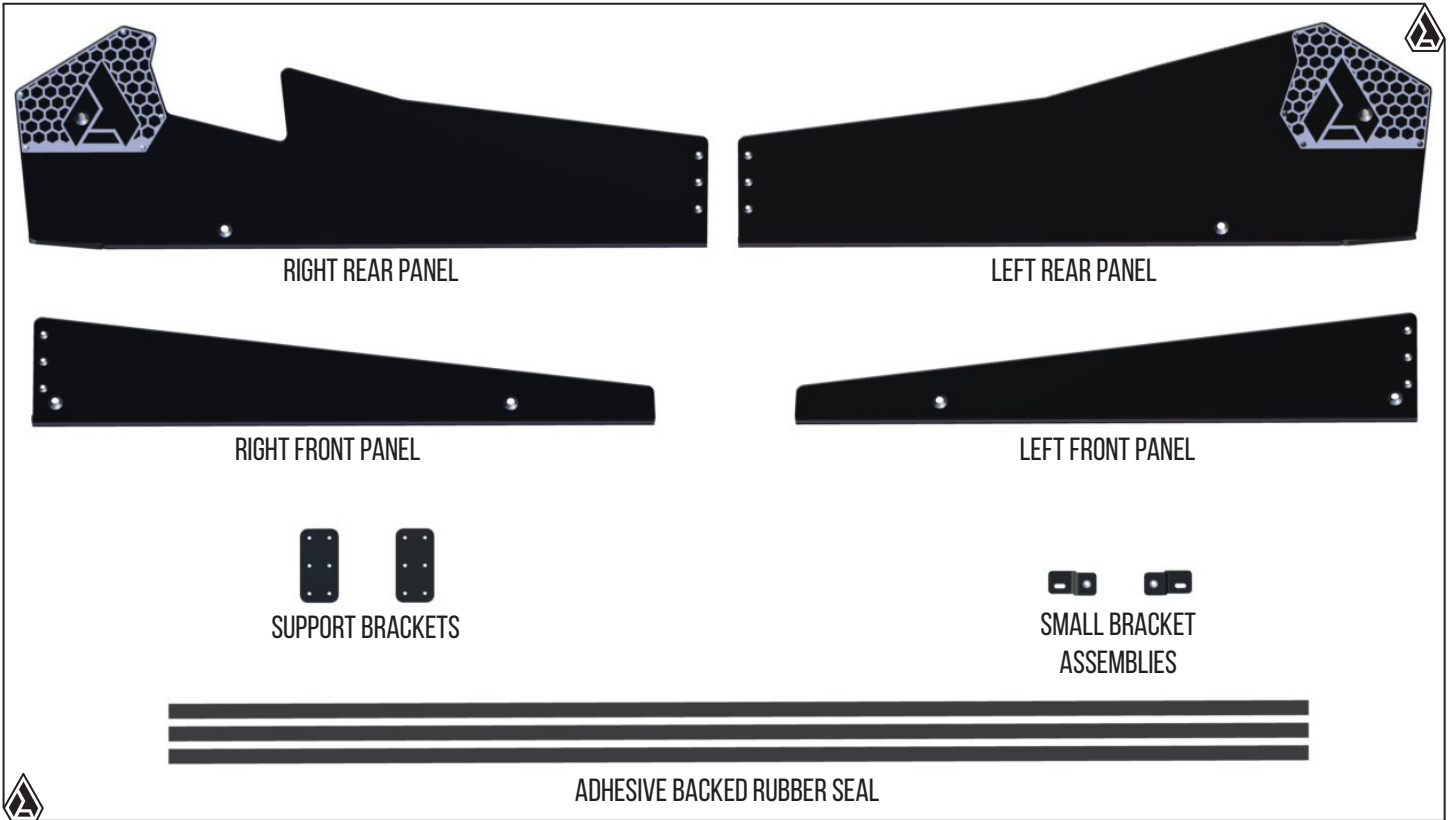




- ⚠ MAKE SURE THE MODEL ON THE INSTRUCTION SHEET MATCHES YOUR VEHICLE.
- ⚠ BE SURE TO READ ALL INSTRUCTIONS AND ILLUSTRATIONS BEFORE STARTING.

- ⚠ DO NOT DISCARD PACKAGING UNTIL PRODUCT HAS BEEN SUCCESSFULLY INSTALLED.



7/16" H.S. DRILL BIT (1PC)



5/32" DRILL BIT (1PC)



M8X100 FT SCREW (2PCS)



M8X90 FT SCREW (4PCS)



#14 TORX SELF TAP (18PCS)



M6X30 FT SCREW (2PCS)



M8X25 FT SCREW (2PCS)



M6X10 FT SCREW (12PCS)



M6X35 BUTTON FLANGED (2PCS)



RED LOCTITE (1PC)



DRILL BUSHING (1PC)



M8 NYLOCK NUT (6PCS)



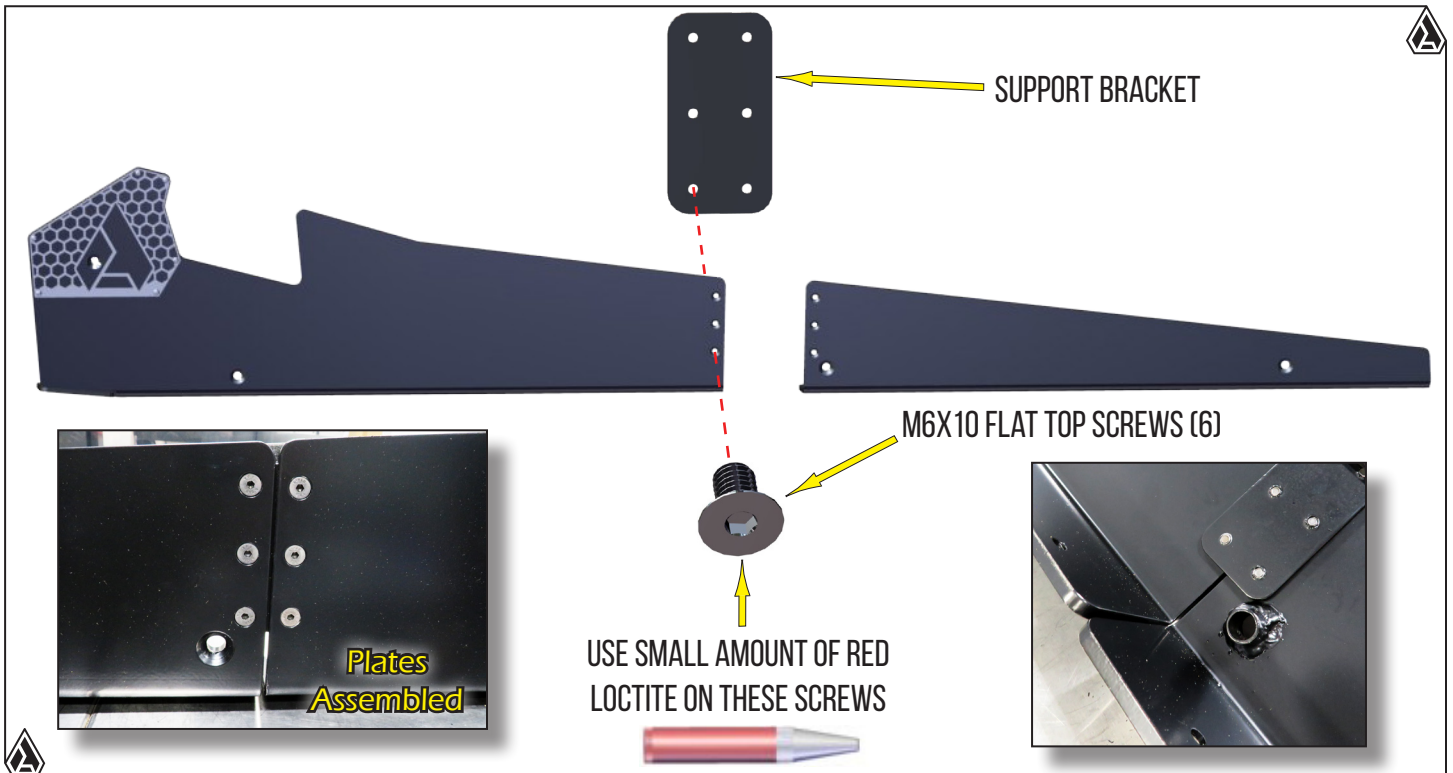
ALIGNMENT WASHER (12PCS)



M6 CLIP ON BARREL NUT (2PCS)



20MM RUBBER PLUG (2PCS)



1. First, you will need to assemble the **Skid Plates** together using the **M6x10 F.T.** short screws and **Support Bracket** provided in your kit. Also you will need to use the **Red Loctite** on these screws to keep them secure. **Fig.1** shows how they all go together. Repeat for opposite side plates.

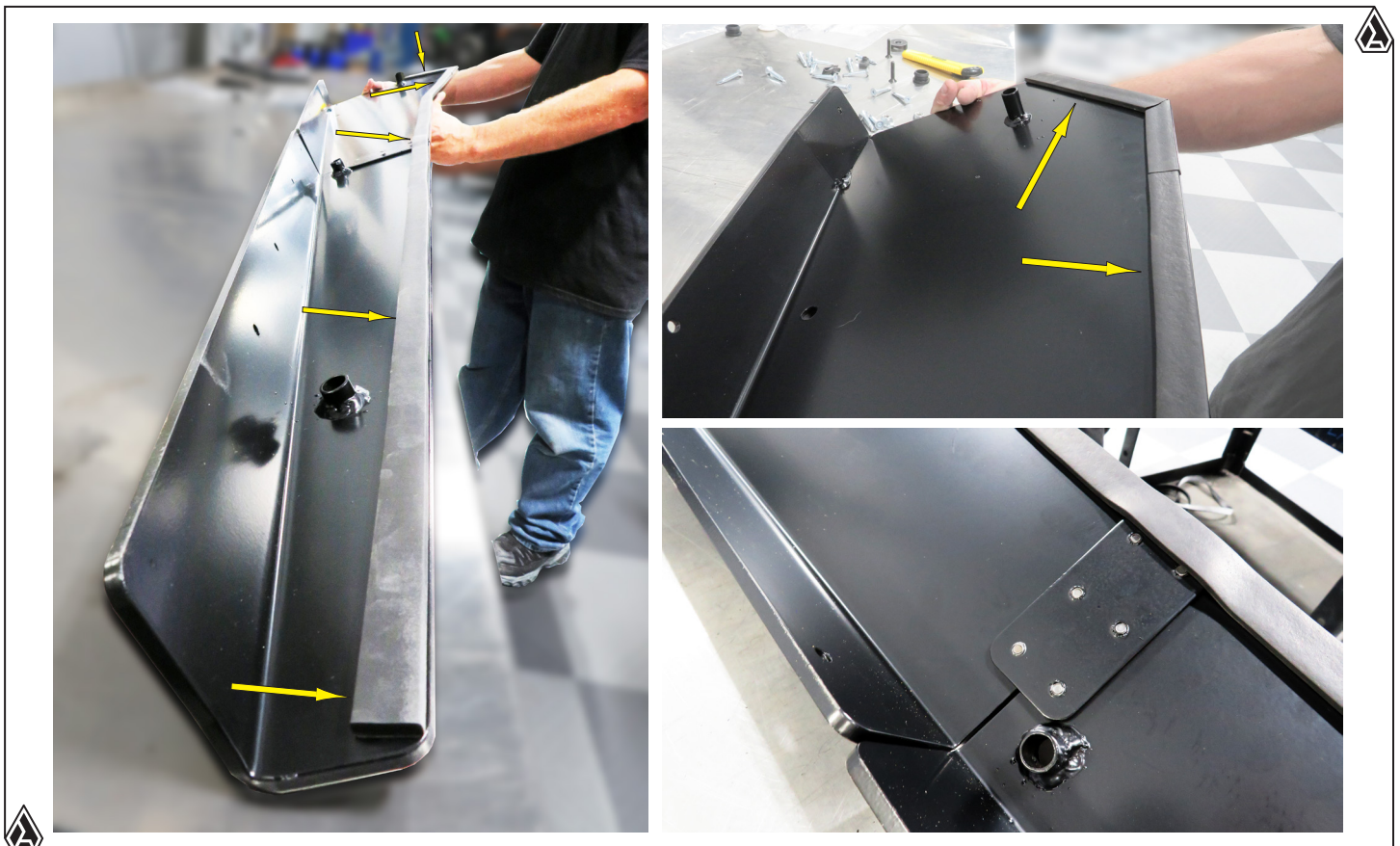
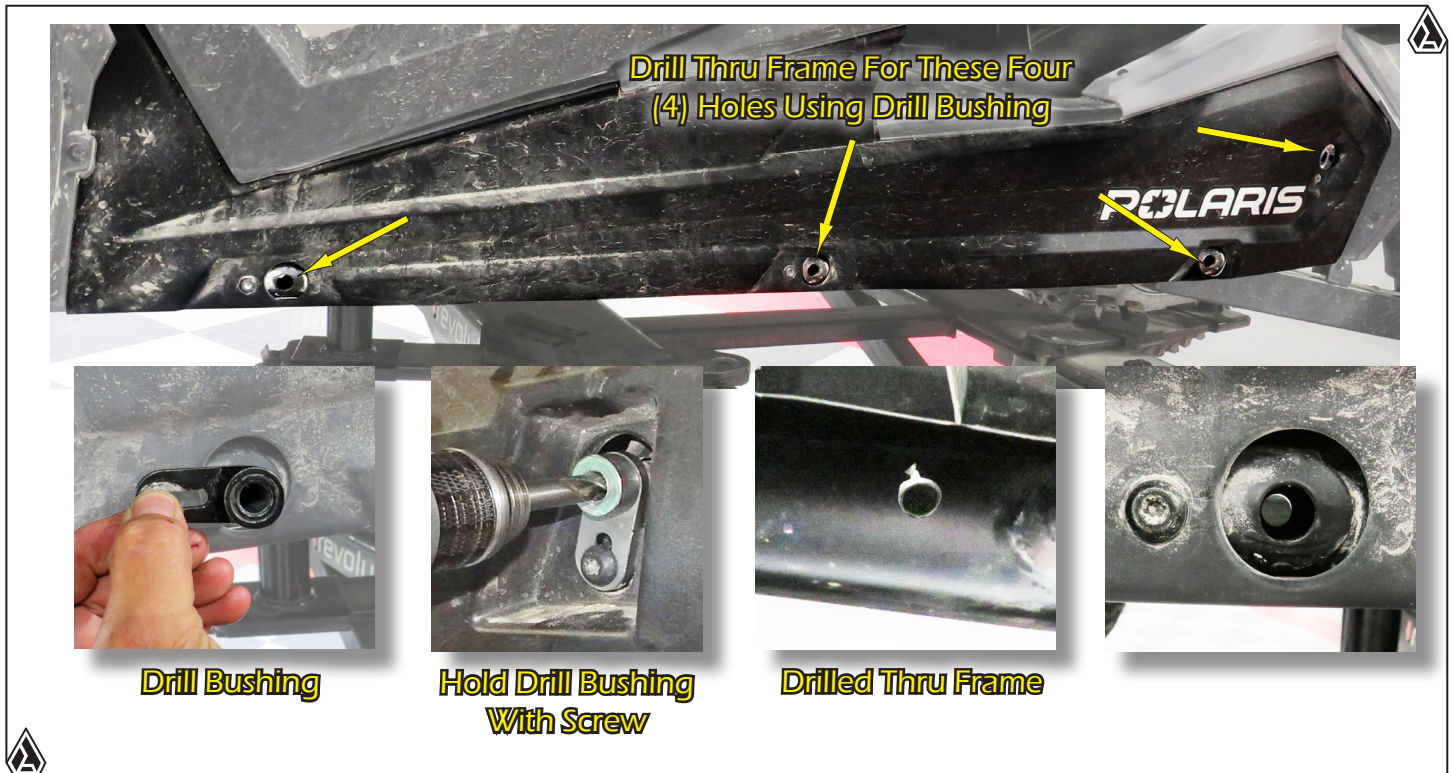
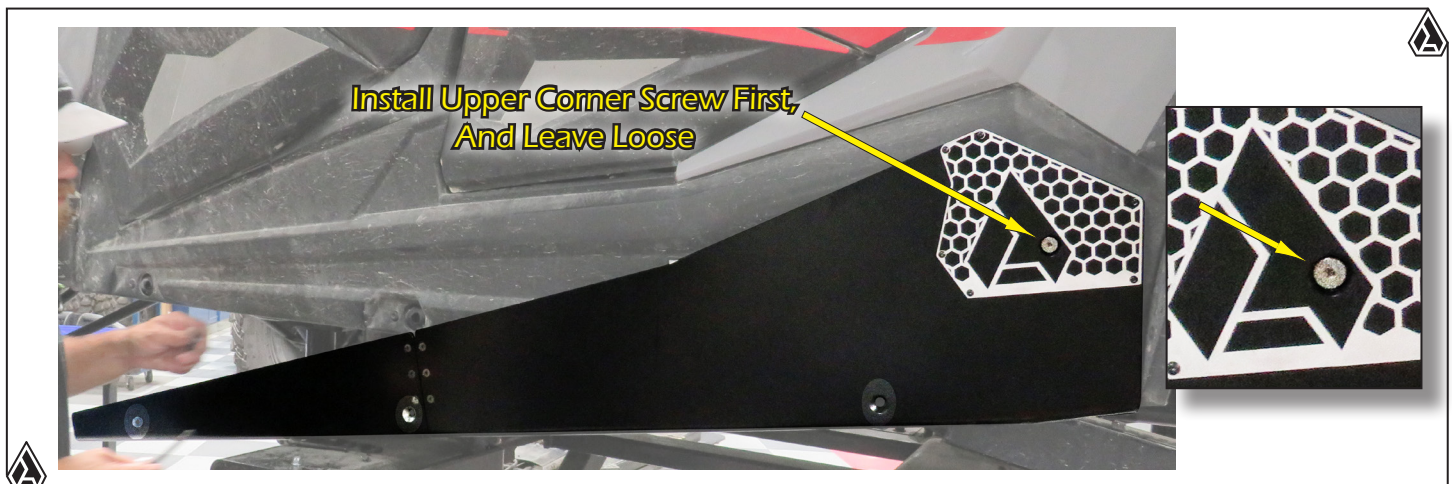


FIG.2

2. After assembling the skid panels together, now you can apply the **Adhesive Backed Rubber Seal** to the top inside edge of the **Skid Assembly** as shown in Fig.2. Repeat for opposite side skid assembly.



3. Now you need to will need to drill out some holes for the hardware to attach to the vehicle. In **FIG.3** your kit you have a **Drill Bushing**, it's used to hold the drill bit straight so you can align the holes for your parts to fit properly. **Fig.3** shows the four (4) holes (per side) where you will drill through the frame. To use the **Drill Bushing**, simply insert it into the factory hole then remove the factory screw and reinstall it holding the **Drill Bushing** to the vehicle as shown in **Fig.3**. You will drill through the frame also shown in **Fig.3**.



4. Next, you will be begin to install the **Skid Plate Assembly**. However, there is a couple thing quick **FIG.4** things you need to do first. You will be installing the whole panel on the machine by the upper corner screw as shown in **Fig.4**, and putting the rest of the screws in order to align the small bracket underneath the panels which you will install the coming steps.

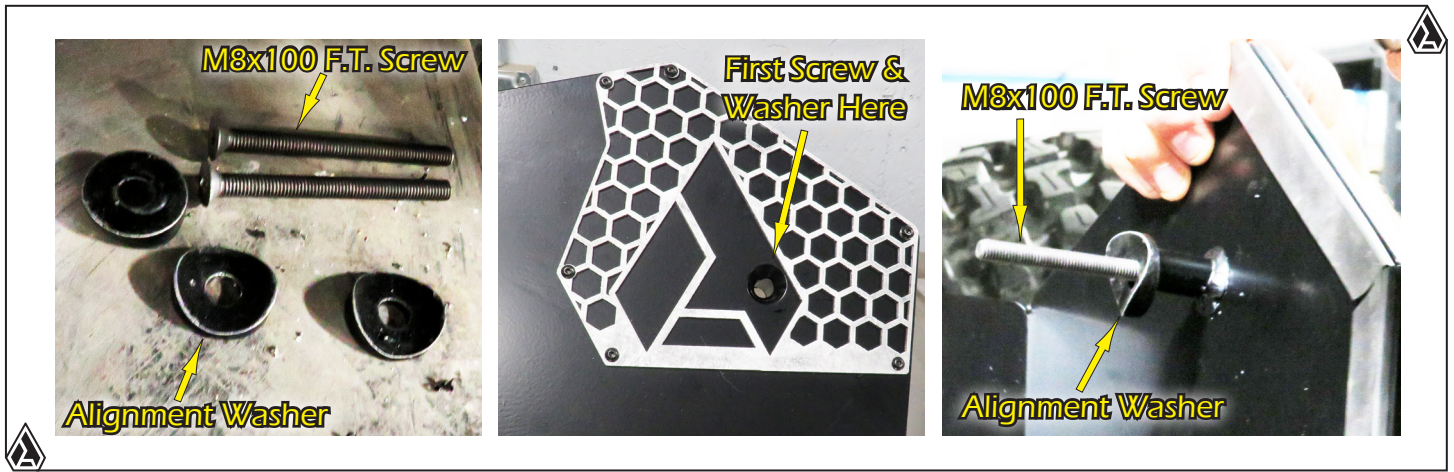


FIG.5

5. First, start with One (1) of the **M8x100 F.T. Screws** and Two (2) of the **Alignment Washers** from your kit and assemble one of each into the corner hole as shown in Fig.5.

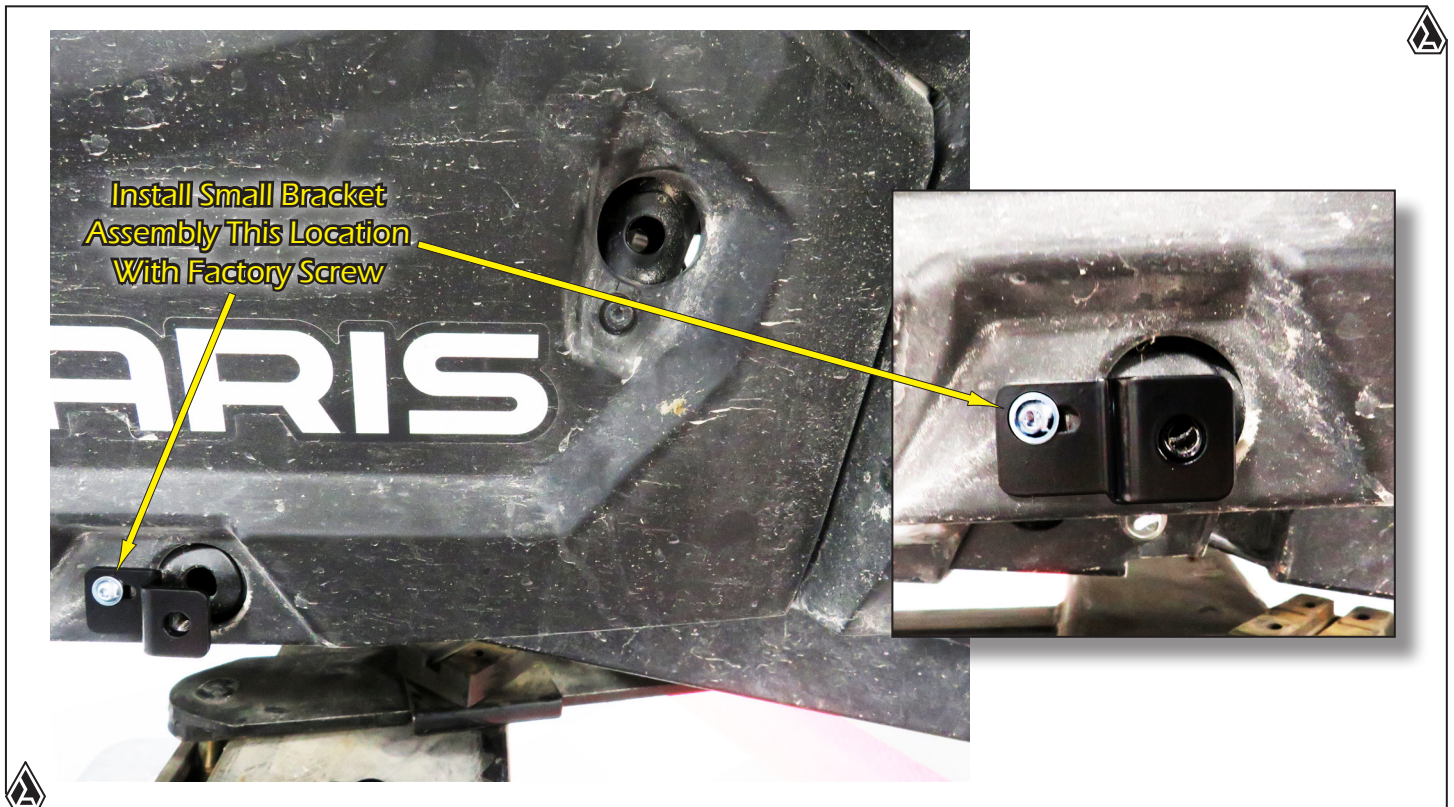


FIG.6

6. Then, install one of the **Small Bracket Assemblies** in front of the lower right hole as shown in Fig.6 using the factory screw also shown in Fig.6. Snug the screw but do not tighten as you are only wanting to lightly hold it in position so you can align the hole in the bracket with the hole in the **Skid Plate** the following steps. Install as shown in Fig.6.

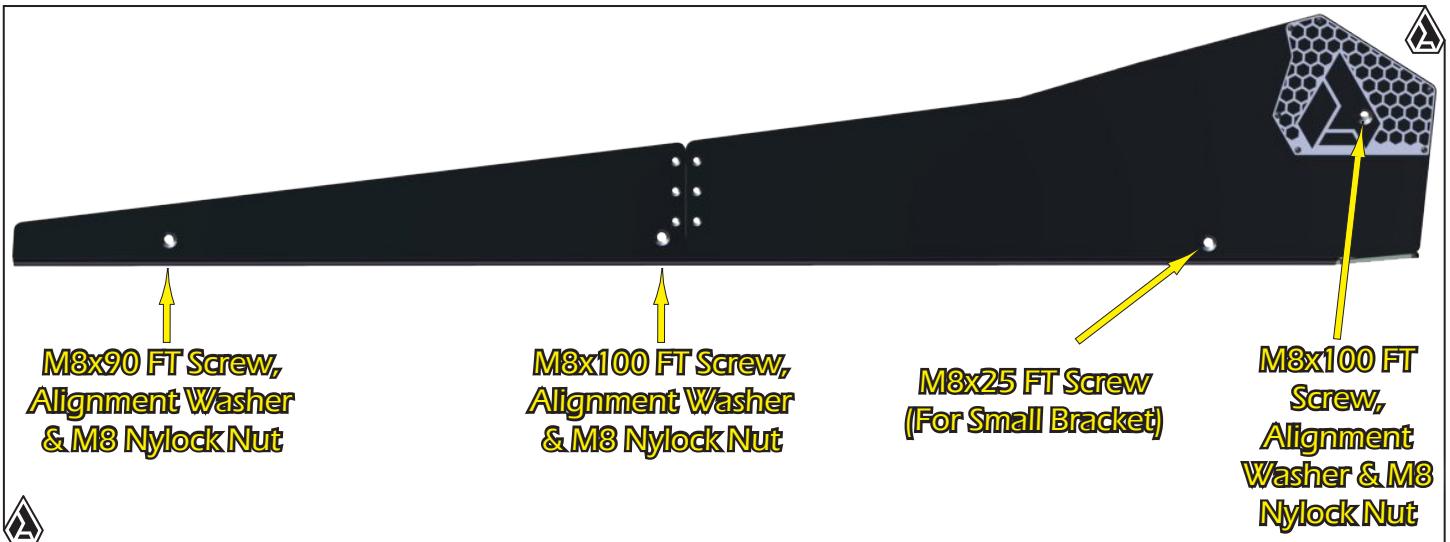


FIG.7A



FIG.7B

7. One more prep before you align the bracket hole. You will need to drill a larger hole in the bolt location right behind the front seats in the plastic panel on the inside. This screw only gets a **Nylock Nut** on the inside and not the **Alignment Washer**. So this is for clearance to install it. You'll need to drill a pilot hole thru the plastic from the outside hole location, then use a Step Drill or equivalent to drill out a **20mm Diameter Hole** to install the **Nylock Nut and Rubber Plug** included in your kit. Repeat the same for the other side of the vehicle. See Fig.7A. Then install the **Skid Plate** assy starting by installing the bolt in the upper right within the "A" logo as shown in Fig.7B but leave a little loose. Install using another **Alignment Washer** and **M8 Nylock Nut** as shown on Fig.7B.



8. Then install the other two (2) more forward holes of the **Skid Plate** using the **M8x90 Screw, Alignment Washer** and **M8 Nylock Nut** in the first hole Farthest towards the front of the vehicle, then the next hole back using the **M8x100 Screw, Alignment Washer** and **M8 Nylock Nut**. Just snug these as well for now until you align the **Small Bracket** hole next. **Fig8** shows the hardware used for each **Skid Panel** hole. Next you'll see more details of these.

FIG.8

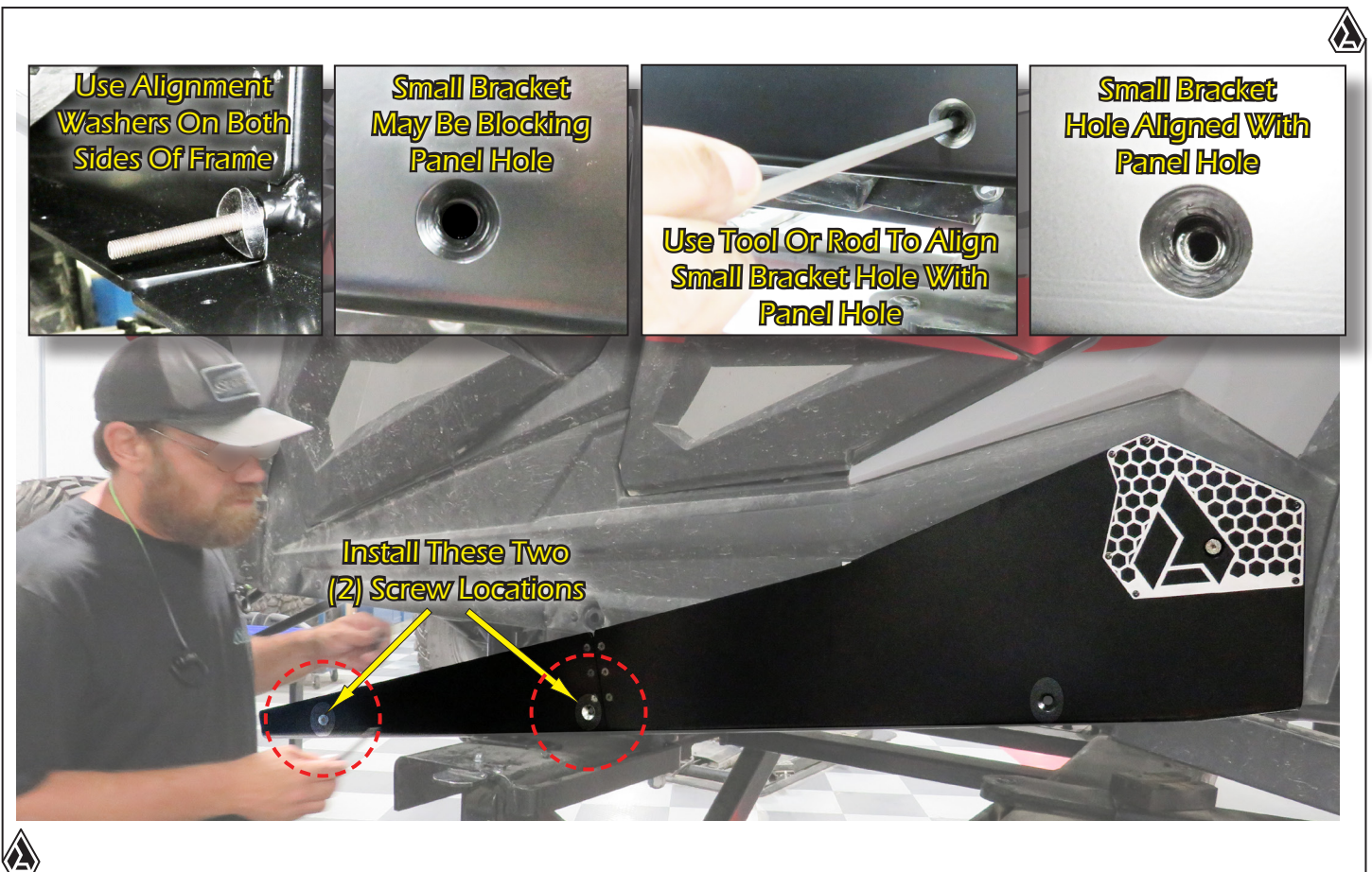
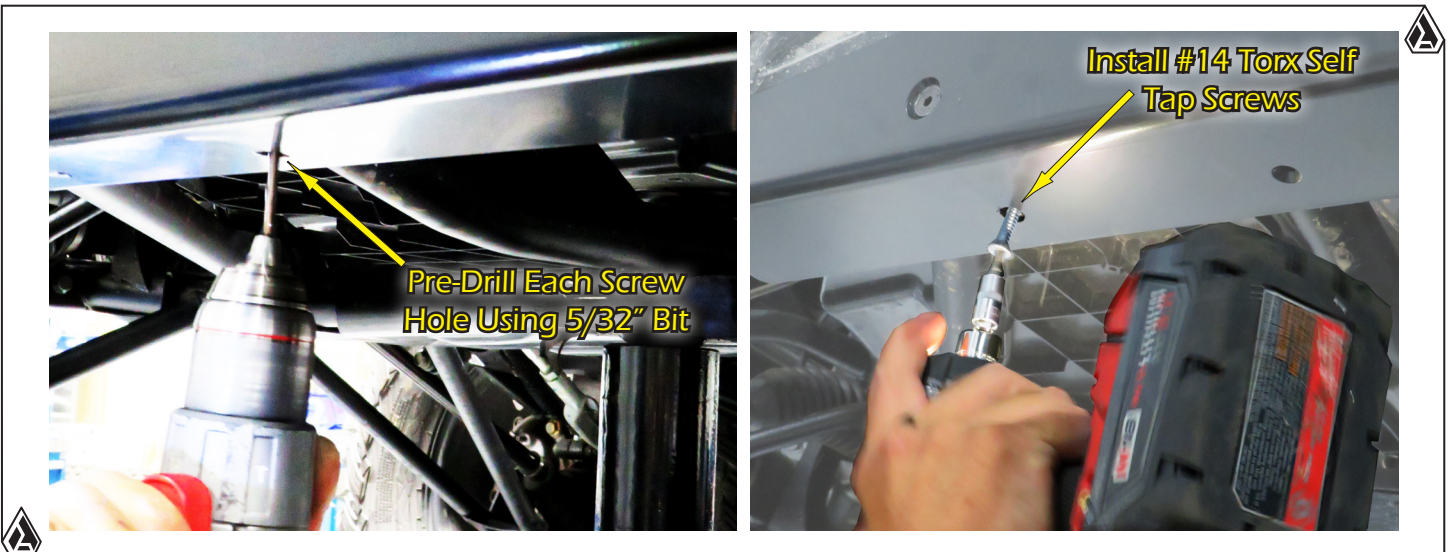


FIG.9

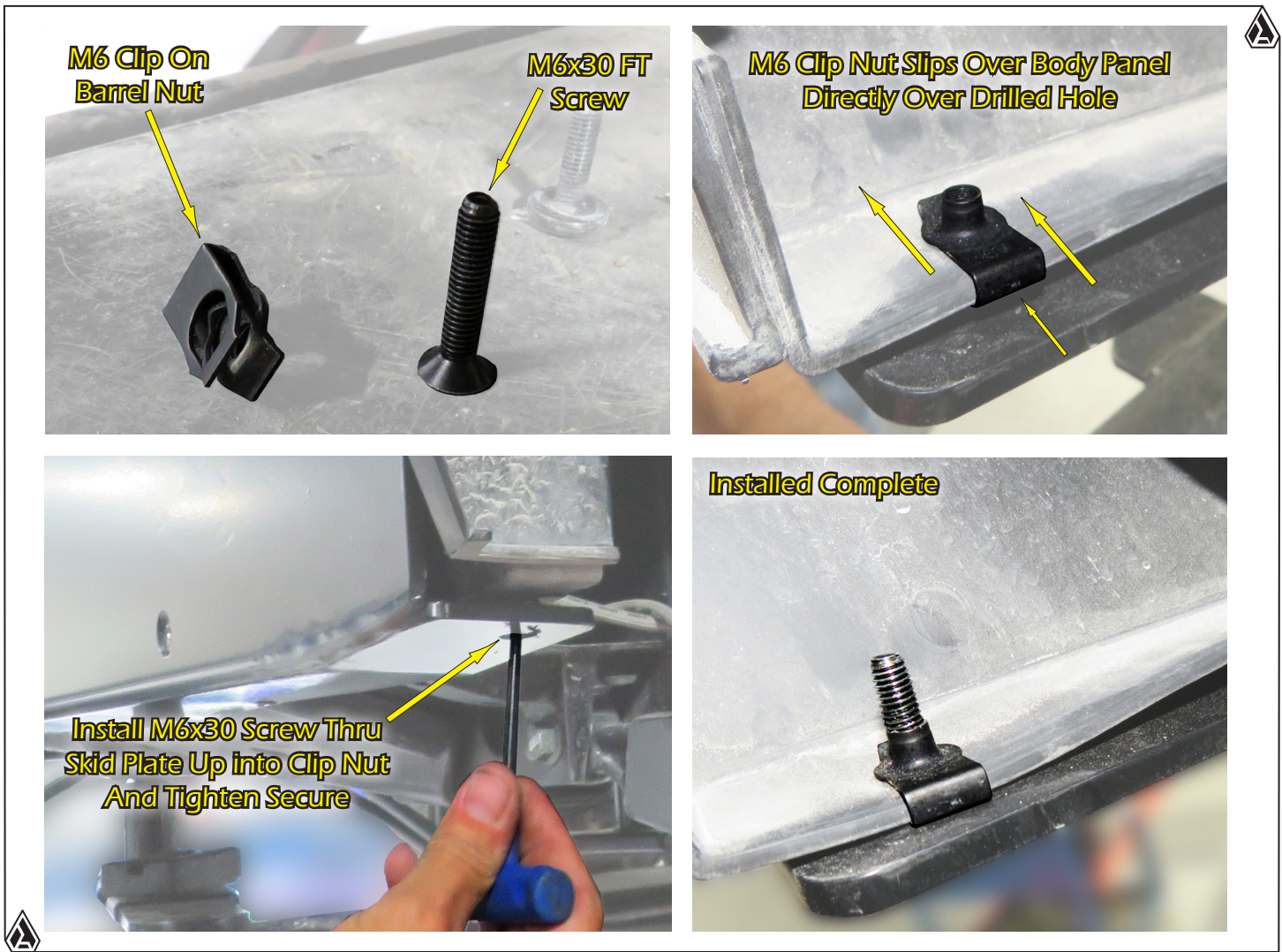
9. Once the **Skid Plate** assembly is temporarily installed, take a rod or Allen wrench and insert it into the panel hole and find the **Small Bracket Hole** and align or center it with the hole in the **Skid Plate Assembly** so the screw will go in easily and properly. See **Fig.9**.



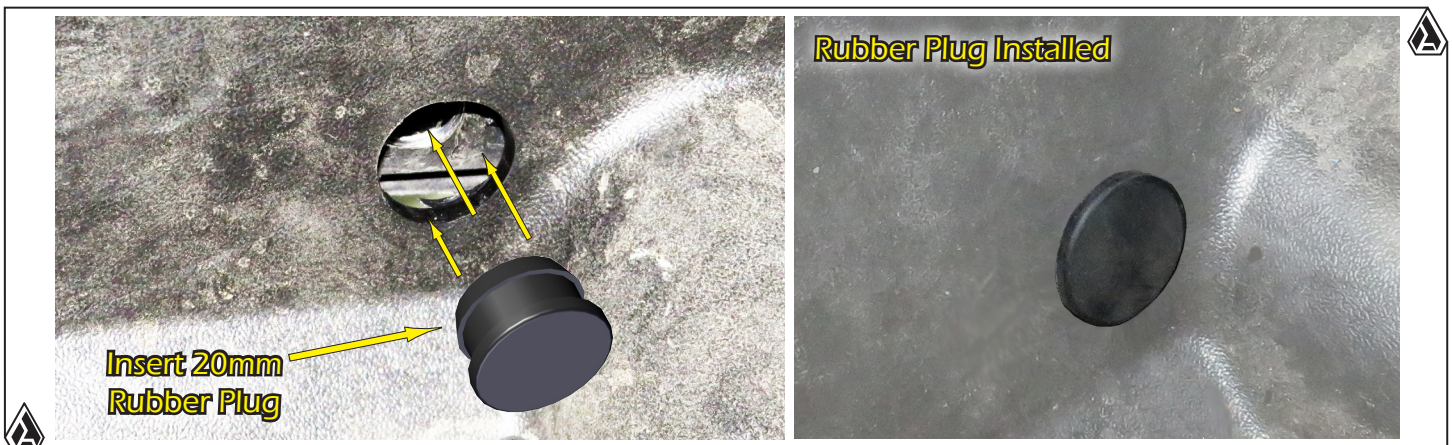
10. Now that the screw hole is aligned, you will need to remove the **Skid Plate Assembly** off the machine, then tighten the **Small Bracket** factory screw so the bracket hole will stay aligned with the **Skid Plate Assembly**. Then, reinstall the **Skid Plate Assembly** back onto the machine using the **M8x25 FT Screw** into the **Skid Plate** and **Small Bracket**. Then tighten all screws down securely. See Fig.10. Now you are ready to install the screws on the underneath side of the **Skid Plate Assembly** next.



11. To install the screws on the underneath side, first pre-drill the screw holes using the **5/32" Drill Bit** provided in your kit. Then install the **#14 Torx Self Tap Screws** into all of the holes except the very last one closest to the rear wheel. That one has a different process we'll show next. See Fig.11.



12. Since there is no frame tube for the Skid Plate Assembly to use the Alignment Washers, you will need to install the M6 Clip On Barrel Nut and M6x30 FT Screw for this location, also provided in your kit. The Clip Nut slips over the body panel you drilled thru and goes directly over hole so the screw can thread into it, tightening the skid plate to the body. See Fig.12.



13. The last thing to do is to insert the 20mm Rubber Plug into the hole you previously drilled out in step #7. Repeat for both sides. See Fig.13.

MAKE SURE THAT ALL BOLTS AND NUTS ARE TORQUED TO FACTORY SPECIFICATIONS AND ARE SECURE. PLEASE CONTACT ASSAULT INDUSTRIES FOR QUESTIONS REGARDING SPECIFICATIONS OR ANY OTHER QUESTIONS YOU MAY HAVE. THANKS!



Liability Statement

Assault Industries® products are designed to best fit user's ATV/UTV under stock conditions. Adding, modifying, or fabricating any factory or aftermarket parts will void any warranty provided by Assault Industries® and is not recommended. Assault Industries® products could interfere with other aftermarket accessories. If user has aftermarket products on machine, contact Assault Industries® to verify that they will work together.

Although Assault Industries® has thousands of satisfied customers, user should be aware that installing lift kits, long travel, or suspension kits, tires, etc. will change the ride of machine and may increase maintenance and part wear. Operating any off-road machine while, or after, consuming alcohol and/or drugs increases risk of bodily harm or death. No warranty or representation is made as to this product's ability to protect user from severe injury or death. Assault Industries® urges operators and occupants to wear a helmet and appropriate riding gear at all times.

By purchasing and installing Assault Industries® products, user agrees that should damages occur, Assault Industries® will not be held responsible for loss of time, use, labor fees, replacement parts, or freight charges. Assault Industries®, nor any 3rd party, will not be held responsible for any direct, indirect, incidental, special, or consequential damages that result from any product purchased from Assault Industries®. The total liability of seller to user for all damages, losses, and causes of action, if any, shall not exceed the total purchase price paid for the product that gave rise to the claim.

Assault Industries® will warranty only parts provided by Assault Industries®. Any damage or problems with OEM housings, bearings, seals, or other manufacturers' products will not be covered by Assault Industries®. Assault Industries® parts and products are not warrantied if item was not installed properly, misused, or modified.

Installing, adding, modifying, or fabricating any factory or aftermarket product to your ATV/UTV may violate certain local, state, and federal laws. Be advised that laws vary depending on town, city, county, state, etc. Use of certain products on public streets, roads, or highways may be in violation law. The Buyer is solely and exclusively legally and personally responsible for any violation of the law by the installation or use of the product. You must abide by all local, state, and federal laws, including but not limited to vehicle safety, traffic laws, and ordinances. It is your responsibility to know the laws and how they apply to you.

The Buyer is responsible to fully understand the capability and limitations of his/her vehicle according to manufacturer specifications, warnings and instructions and agrees to hold Assault Industries® harmless from any damage resulting from failure to adhere to such specifications, warnings and/ or instructions. The Buyer is also responsible to obey all applicable federal, state, and local laws and ordinances when operating his/her vehicle while using this product, and the Buyer agrees to hold Assault Industries® harmless from any violation thereof.

LEAVE US FEEDBACK

Visit Assaultind.com and leave a review of your product purchase.
We appreciate your opinion.....
.....even if you're wrong! 😊

NEED ADDITIONAL HELP?

Check out our YouTube channel
Call us : (714) 799-6711
Monday - Friday: 8am-5pm
Email: sales@assaultind.com