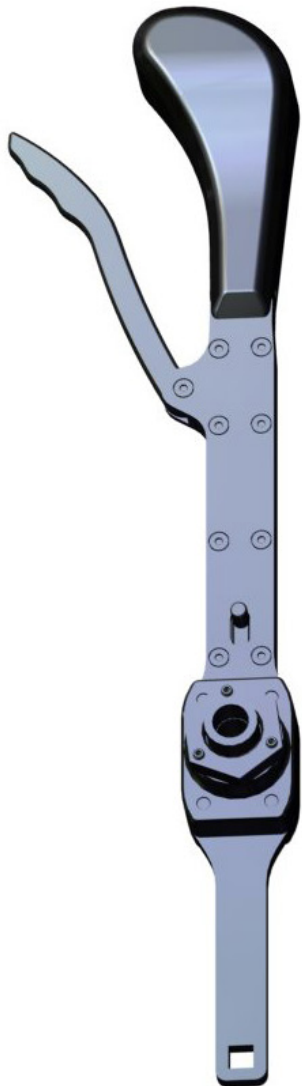


INSTALLATION INSTRUCTIONS

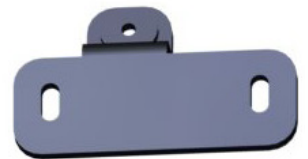
Gated Shifter: GS-P-RZRTR



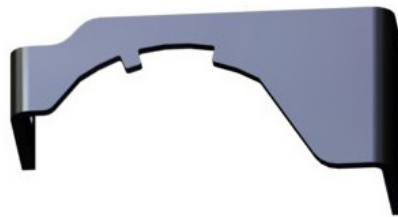
Shifter Assembly



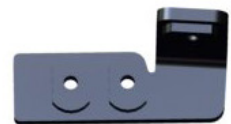
Gate Plate Weldment



Gate Plate Support-1



Gate Plate Back



Gate Plate Support-2



**M8x25 Hex
Flanged
(2)pcs**



**Blue
Thread
Locker
(1)pc**



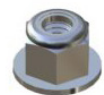
**M6x20
Button
Flanged
(5)pcs**



**1/4"
Fender
Washer
(1)pc**



**M6x25 Hex
Flanged
(1)pc**



**M6 Nylock
Nut
(1)pc**

1. The first thing you need to do is **Remove the Seats** and the **Back Panel** behind the seats, and then remove the **Center Console** by releasing the plastic push-rivets and removing the items. See **Fig.1**.



Fig.1

2. Then remove the top items off the center console and then remove the top console cover as shown in Fig.2.

Optional: You can also just pull the rear part of the console top up and hold it there by the factory shifter as shown here in **Fig.2b**. You just need access to the shifter linkage etc.

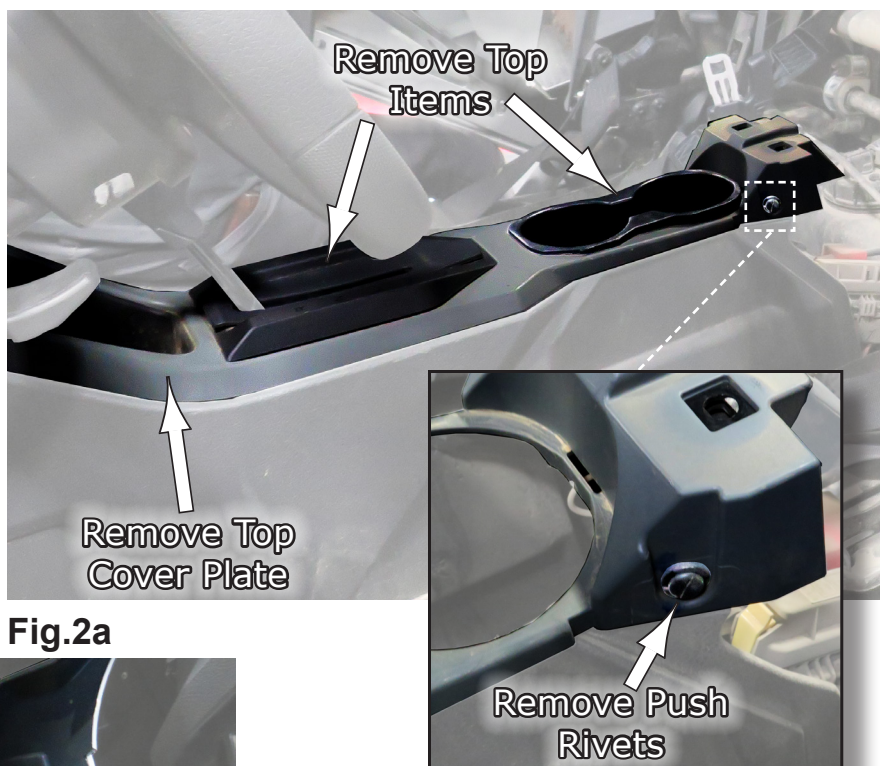


Fig.2a



Fig.2b

3. Now, on the Passenger's side, remove the Push-Rivets along the bottom edge of the console. You only need to remove the ones shown in **Fig.3**. The ones towards the front don't need to be removed as you are only doing this to be able to pull the side of the console out or away from the shifter to gain access to your working area.

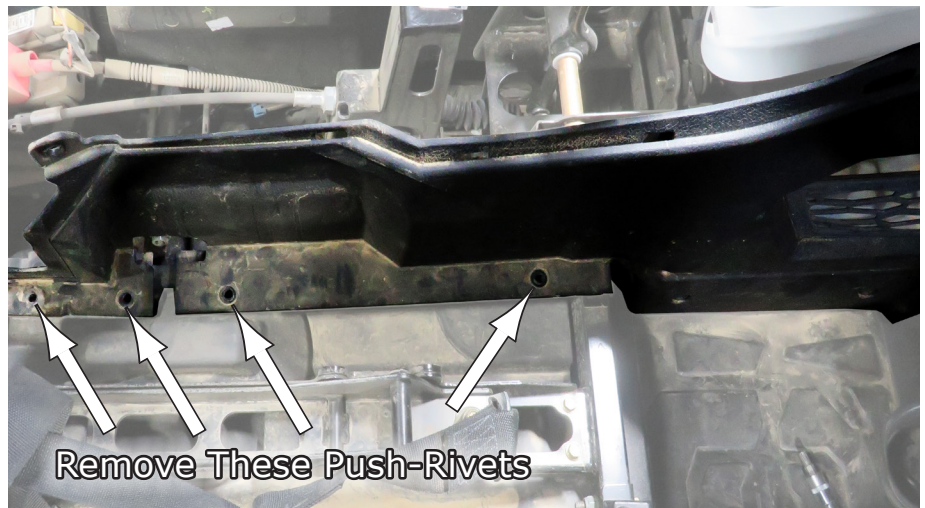


Fig.3

4. After the Passenger's side Push-Rivets are removed, now go over on the Driver's Side and remove the Snap Ring on the shifter assembly as shown in **Fig.4**. **Be sure not to drop it as you will need to re-use it!**



Fig.4

5. Next you will be removing the shifter rod from the shifter and removing the hardware attaching it at the bottom so you can remove the factory shifter. To do this, slide the shifter Rod out of the shifter enough so the shifter is free there at the top. See **Fig.5a-b**. **Be sure to keep the White Bushings as you will re-use them.**

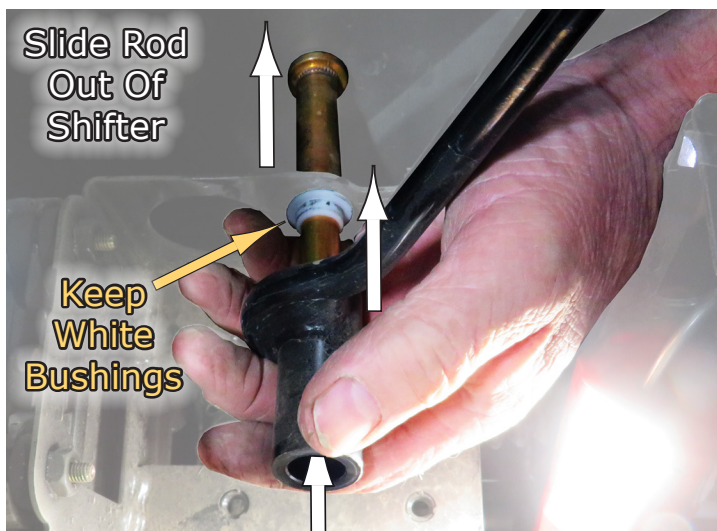


Fig.5a



Fig.5b

6. Now remove the cotter pin, washers and cable end from this end of shifter assembly to remove it as shown in **Fig.6a**. **Fig.6b** shows them removed and the factory shifter is also now removed.

NOTE: Take note on how you take these components off as you will need to re-install them back on the same way when installing your new shifter.



Fig.6a



Fig.6b

7. Next, remove the pin from the end of the **Factory Shifter** and install it onto the **New Gated Shifter** as shown in **Fig.7a-c**.



Fig.7a



Fig.7b



Fig.7c

8. After the Pin is installed, you are now ready to install the New Shifter. However, make sure that your new handle has the bushings installed in it, and haven't fallen out, before installing it in your machine. See **Fig.8**.



Fig.8

9. Now re-install the cable, washers and cotter pin you removed previously onto your new shifter back in the same order that they were taken off. Install these before you mount the shifter onto the shift rod. See **Fig.9**.



Fig.9

10. After the cable is hooked up, now you can mount the shifter by sliding the pivot rod thru the frame and new shifter, re-installing it in reverse order of the way you disassembled it. Make sure after you feed the rod thru the frame and before you run it thru the shifter that you have the bushing on the rod, then run it thru the shifter. Then install the other bushing onto the rod before feeding it thru the other side of the frame. See **Fig.10**.

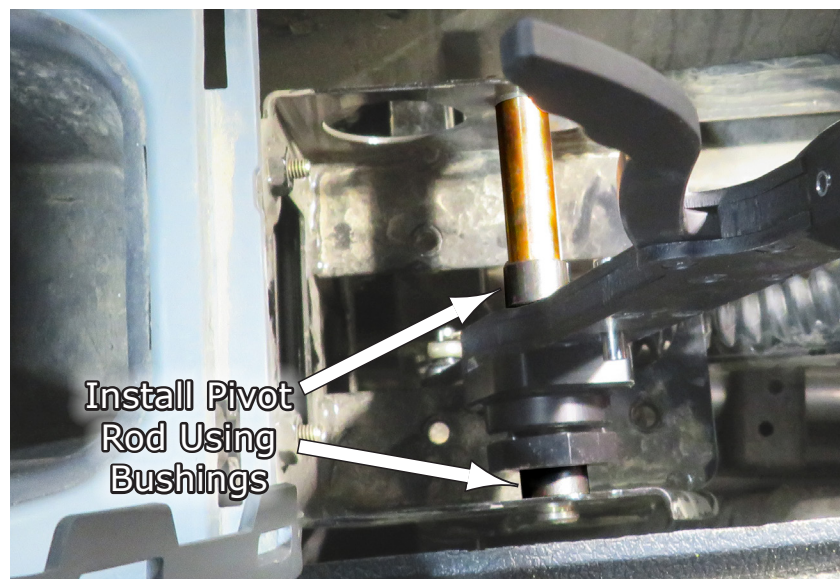


Fig.10

11. Be sure to reuse the clip you removed previously to secure the rod in place. See **Fig.11a**. Then check to see if you have any slack that allows the shifter to slide side-to-side. If so, then adjust the tiny set screws in the nut to one side until all slack is removed. See **Fig.11b**.



Fig.11a



Fig.11b

12. Upon assembly, your shifter should look like the one shown in **Fig.12**.

Next you will install the Bracket Weldments.

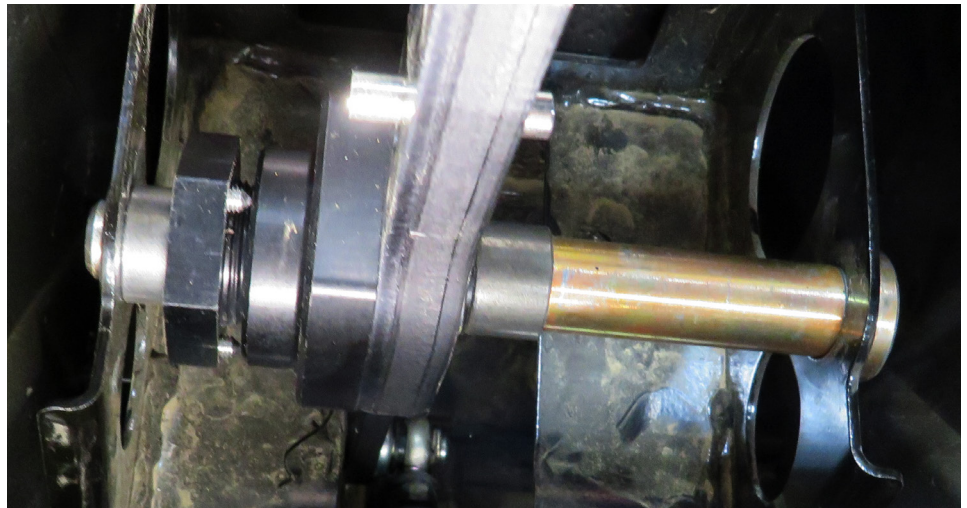


Fig.12

13. Now you can install the Gate Plate Weldment. Install it to the Factory frame by using (2) of the **M8x25 Hex Flanged** bolts provided in your kit. **Fig.13a** shows the part you need. **Fig.13b-c** show the placement of the two (2) bolts.

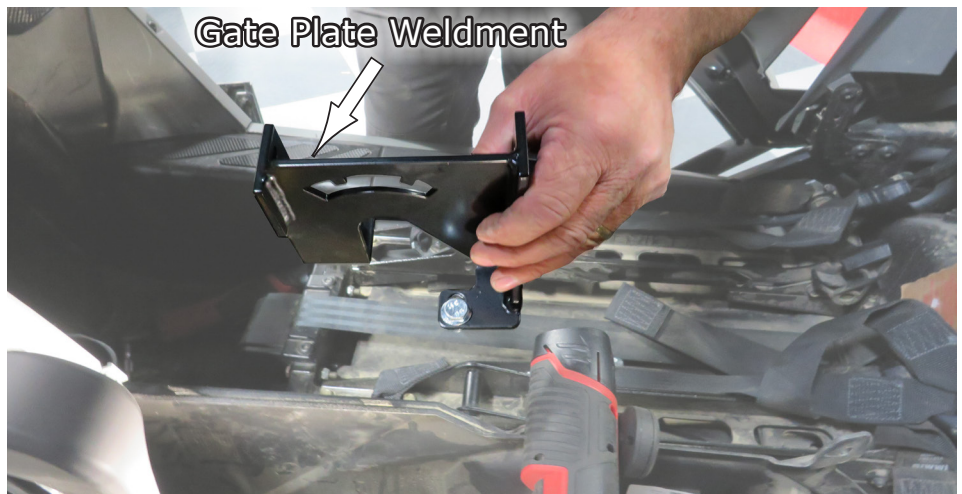


Fig.13a

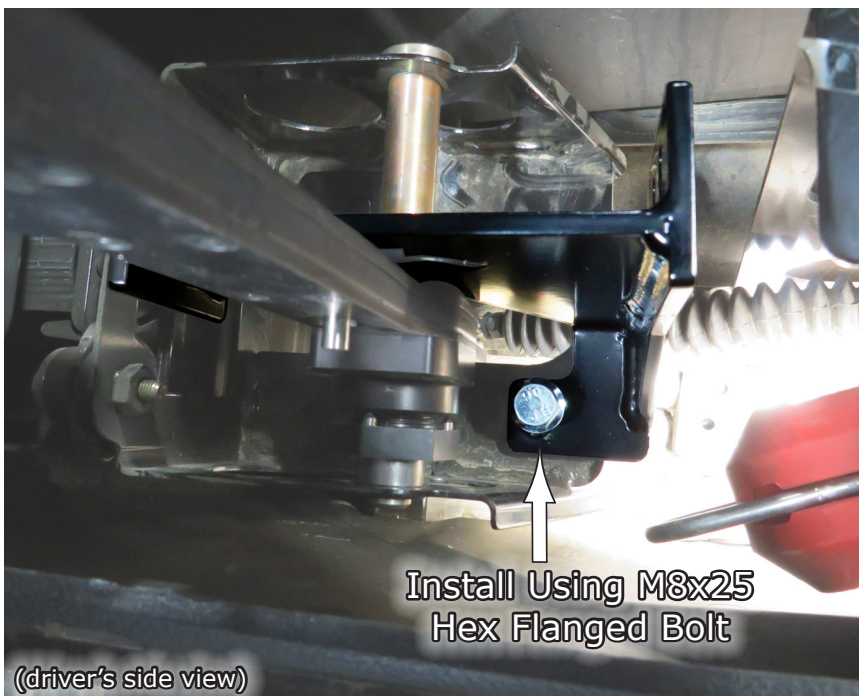


Fig.13b

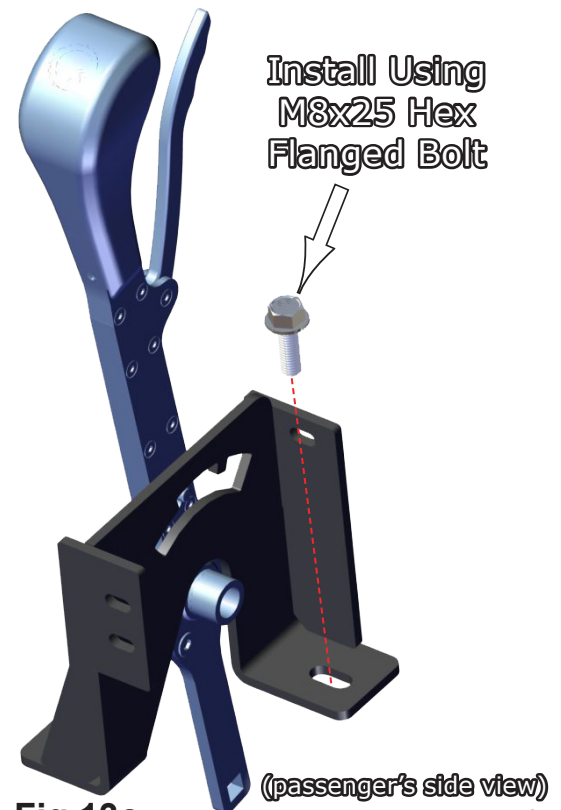


Fig.13c

14.Next, you need to install the **Gate Plate Back** for your kit. This part just slides over top of the **Gate Plate** you just installed. **Fig.14a** shows this plate and where it goes. **Fig.14b** shows the plate in position ready to bolt it on.

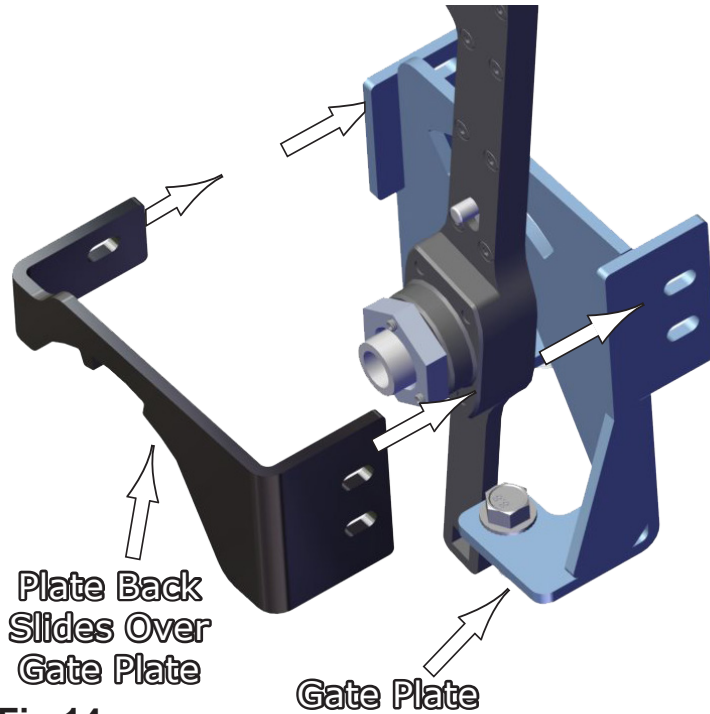


Fig.14a



Fig.14b

15.Now install the two (2) plates together along with the Support Plate-2 using the **M8x25 Hex Flanged** bolts. Then install an **M8x25 Hex Flanged** bolt and **M8 Nylock Nut** on the front side of the shift assembly as shown in **Fig.15a**. **NOTE:** You install the M8 Nylock Nut without the Plate Support-1, as shown in Fig.15a, if the CPU is mounted on that assembly. If you DO NOT have the CPU mounted here, then you WILL add the Support Plate-1 along with the M8x25 Hex bolt as shown in Fig.15b.

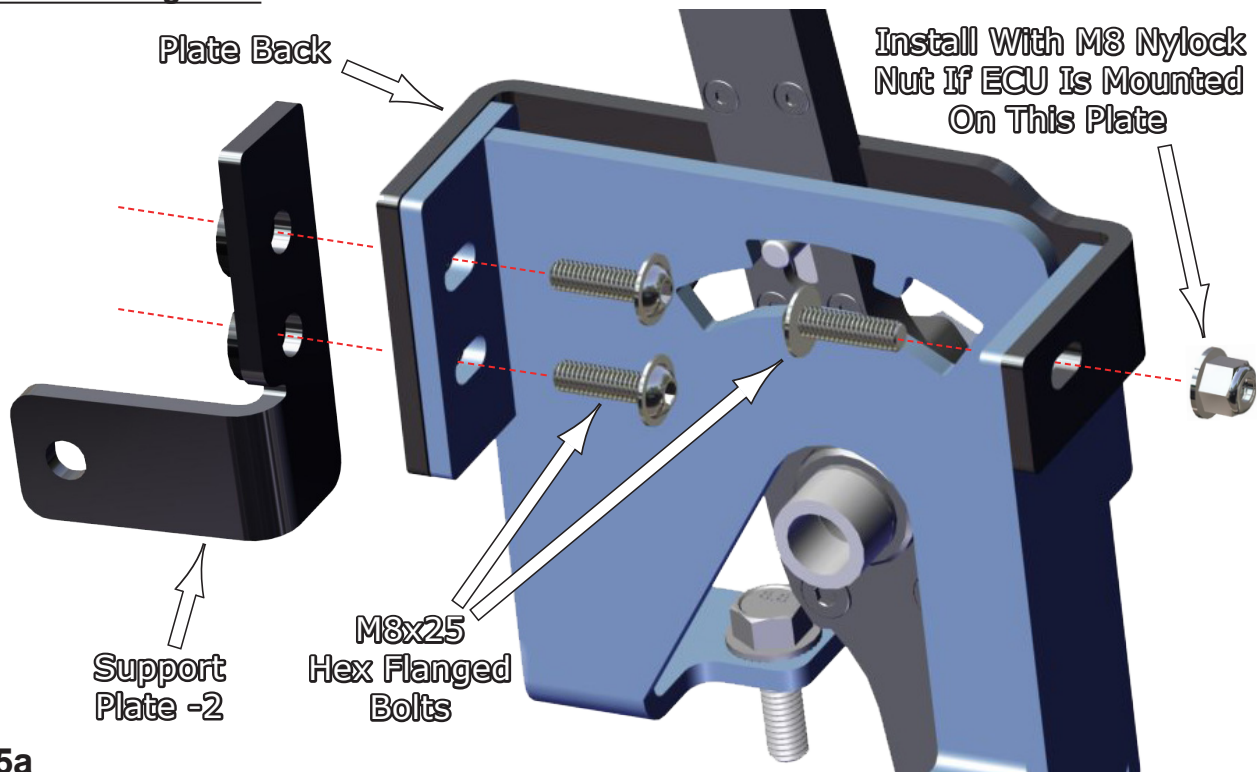


Fig.15a

Install Support-1 With
M8x25 Hex Flanged Bolt
Only If You Do Not Have
The CPU Mounted In
This location.

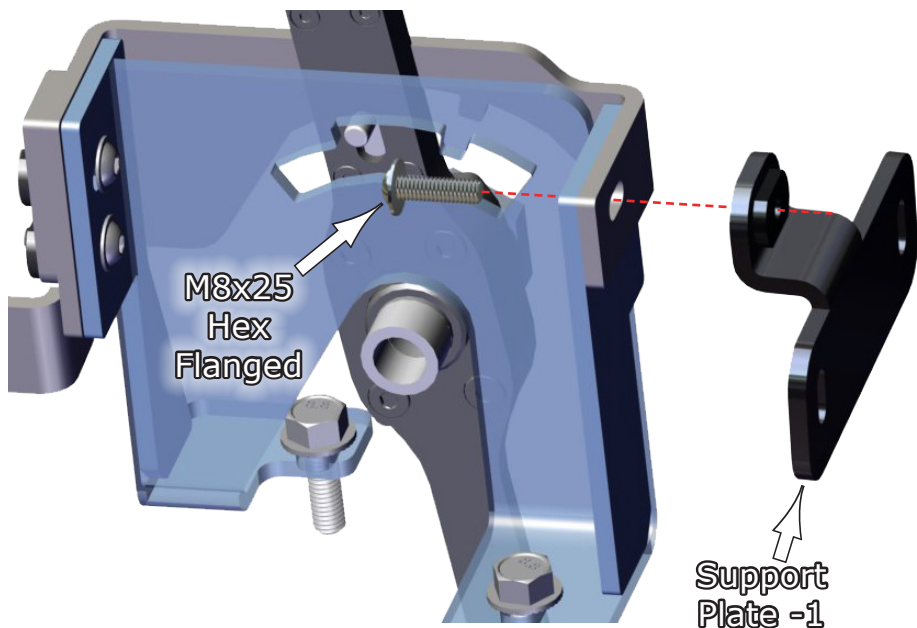


Fig.15b

16.Next you will need to attach **Bracket-2** to the machine frame. You do this by using the **M6x25 Hex Flanged** bolt and the **1/4" Fender Washer** included in your kit. **Fig.16a** shows the order of components. **Fig.16b-c** show attaching the bracket to the frame. Yours should look like the one in **Fig.16c** when complete. Tighten securely.

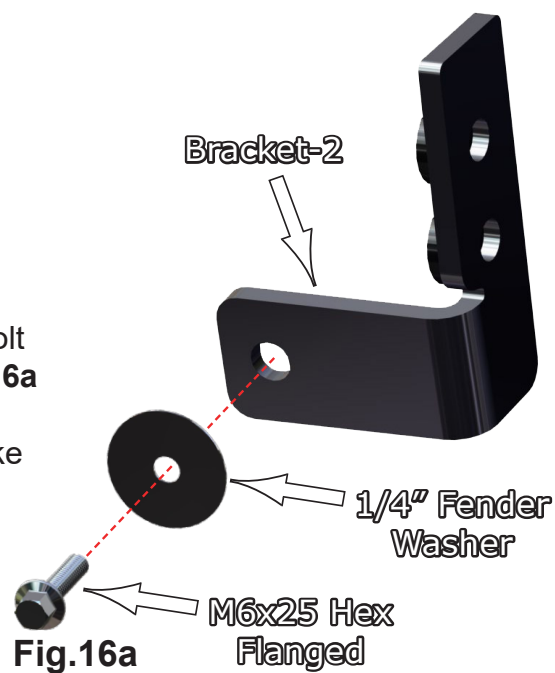


Fig.16a



Fig.16b

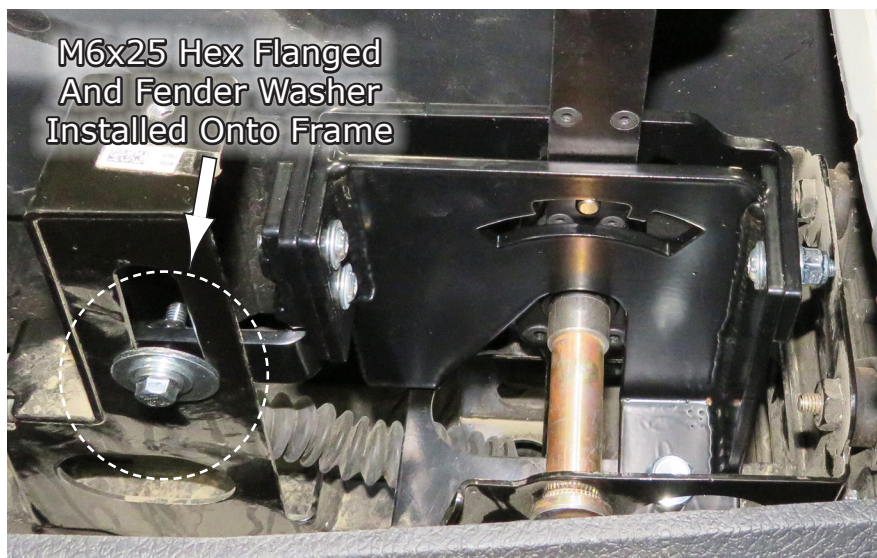


Fig.16c

17. Once all is hooked up and tightened down, now test the shifter by putting it in Drive and Reverse making sure that it does go in Drive and Reverse when using the shift gate. The shifter pin should be in the slot as shown in **Fig.15b**. If it does **NOT** go in gear, drive or reverse, then you will need to adjust the cable linkage one way or the other as shown in **Fig.17a-b**.



Fig.17a



Fig.17b

18. After you have tested the shifter and it is functioning correctly as intended, then re-install all the console panels, seats and other back to the original vehicle set-up.





Liability Statement

SuperATV's® products are designed to best fit user's ATV/UTV under stock conditions. Adding, modifying, or fabricating any factory or aftermarket parts will void any warranty provided by SuperATV® and is not recommended. SuperATV's® products could interfere with other aftermarket accessories. If user has aftermarket products on machine, contact SuperATV® to verify that they will work together.

Although SuperATV® has thousands of satisfied customers, user should be aware that installing lift kits, long travel, or suspension kits, tires, etc. will change the ride of machine and may increase maintenance and part wear. Operating any off-road machine while, or after, consuming alcohol and/or drugs increases risk of bodily harm or death. No warranty or representation is made as to this product's ability to protect user from severe injury or death. SuperATV® urges operators and occupants to wear a helmet and appropriate riding gear at all times.

By purchasing and installing SuperATV® products, user agrees that should damages occur, SuperATV® will not be held responsible for loss of time, use, labor fees, replacement parts, or freight charges. SuperATV®, nor any 3rd party, will not be held responsible for any direct, indirect, incidental, special, or consequential damages that result from any product purchased from SuperATV®. The total liability of seller to user for all damages, losses, and causes of action, if any, shall not exceed the total purchase price paid for the product that gave rise to the claim.

SuperATV® will warranty only parts provided by SuperATV®. Any damage or problems with OEM housings, bearings, seals, or other manufacturers' products will not be covered by SuperATV®. SuperATV® parts and products are not warrantied if item was not installed properly, misused, or modified.

Installing, adding, modifying, or fabricating any factory or aftermarket product to your ATV/UTV may violate certain local, state, and federal laws. Be advised that laws vary depending on town, city, county, state, etc. Use of certain products on public streets, roads, or highways may be in violation law. The Buyer is solely and exclusively legally and personally responsible for any violation of the law by the installation or use of the product. You must abide by all local, state, and federal laws, including but not limited to vehicle safety, traffic laws, and ordinances. It is your responsibility to know the laws and how they apply to you.

The Buyer is responsible to fully understand the capability and limitations of his/her vehicle according to manufacturer specifications, warnings and instructions and agrees to hold SuperATV® harmless from any damage resulting from failure to adhere to such specifications, warnings and/ or instructions. The Buyer is also responsible to obey all applicable federal, state, and local laws and ordinances when operating his/her vehicle while using this product, and the Buyer agrees to hold SuperATV® harmless from any violation thereof.

If you have any problems/questions on this kit, contact us by email
at Superatv.com.

Need help with your installation?



sales@superatv.com



www.superatv.com



1-855-743-3427



8:00am - 9:00pm EST M-Th
8:00am - 7:00pm EST Friday
9:00am - 2:00pm EST Saturday

*Thank You
For Choosing*



Like SuperATV on Facebook to keep up to date on new products!