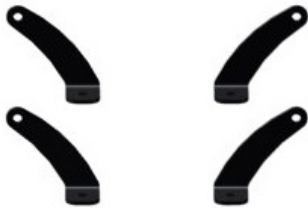




INSTALLATION INSTRUCTIONS

Winch Ready Front Brush Guard: FBG-K-TRX4-001

- Please look through and read these instructions BEFORE starting so you understand what processes you'll be doing, and possible extra tools you may
- Do Not discard product packaging until installation is complete and functioning properly.



- | | | | | | | | |
|---|---|---|--|--|---|--|--|
| | | | | | | | |
| M8x16
Button
Head
(2pcs) | M8
Nylock
Nut
(2pcs) | M8x25
Hex
Flanged
(2pcs) | M10
Nylock
Nut
(8pcs) | M10x30
1.5 Hex
Flanged
(8pcs) | M10x30
1.25 Hex
Flanged
(2pcs) | M12x30
Button
Head
(2pcs) | 45mm
Tube Link
Cap
(2pcs) |

1. The first thing you need to do is assemble the **Side Plates** to the **Winch Mount Plate**. Assemble them by using the **M10x1.5x30 Hex Flanged bolts** and **M10 Nylock Nuts** provided in your kit. There are Four (4) bolt sets per side of the **Mount Plate Assembly**. See **Fig.1**.

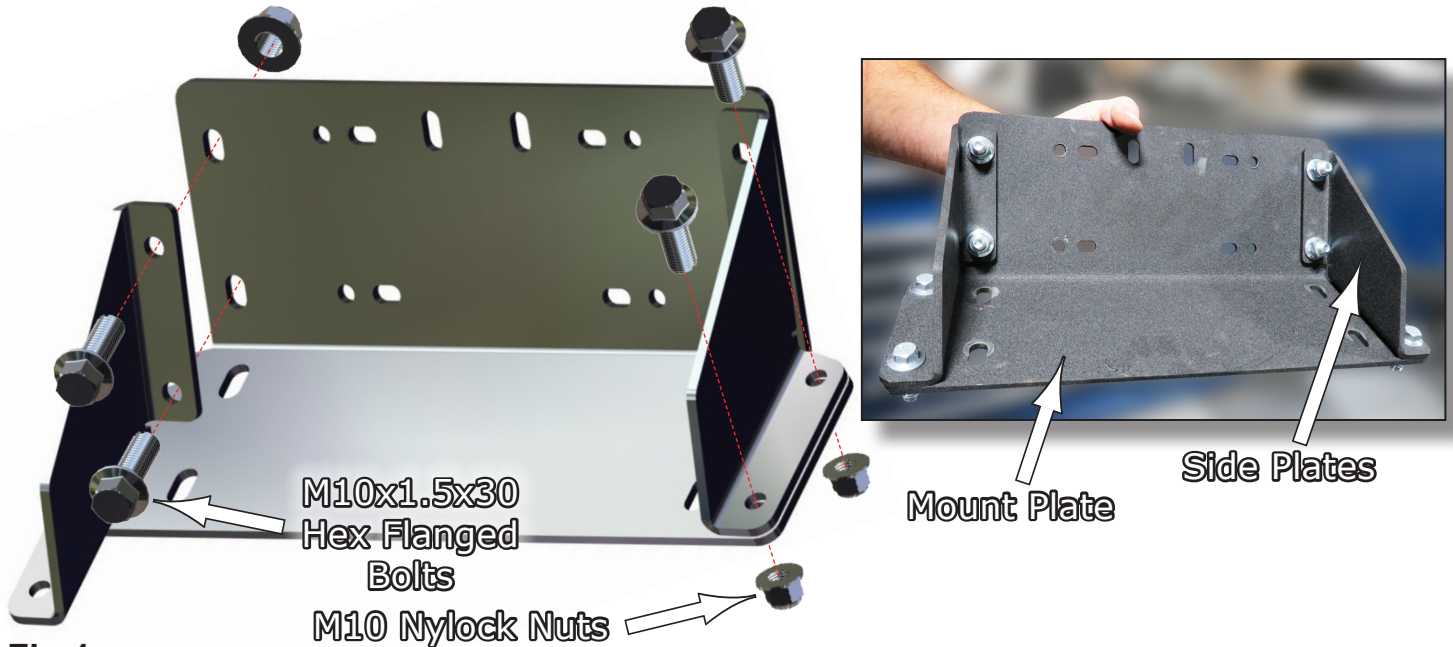


Fig.1

2. Next, install the **Mount Plate** using the factory hardware from your machine in the location shown in **Fig.2**. Then tighten secure.

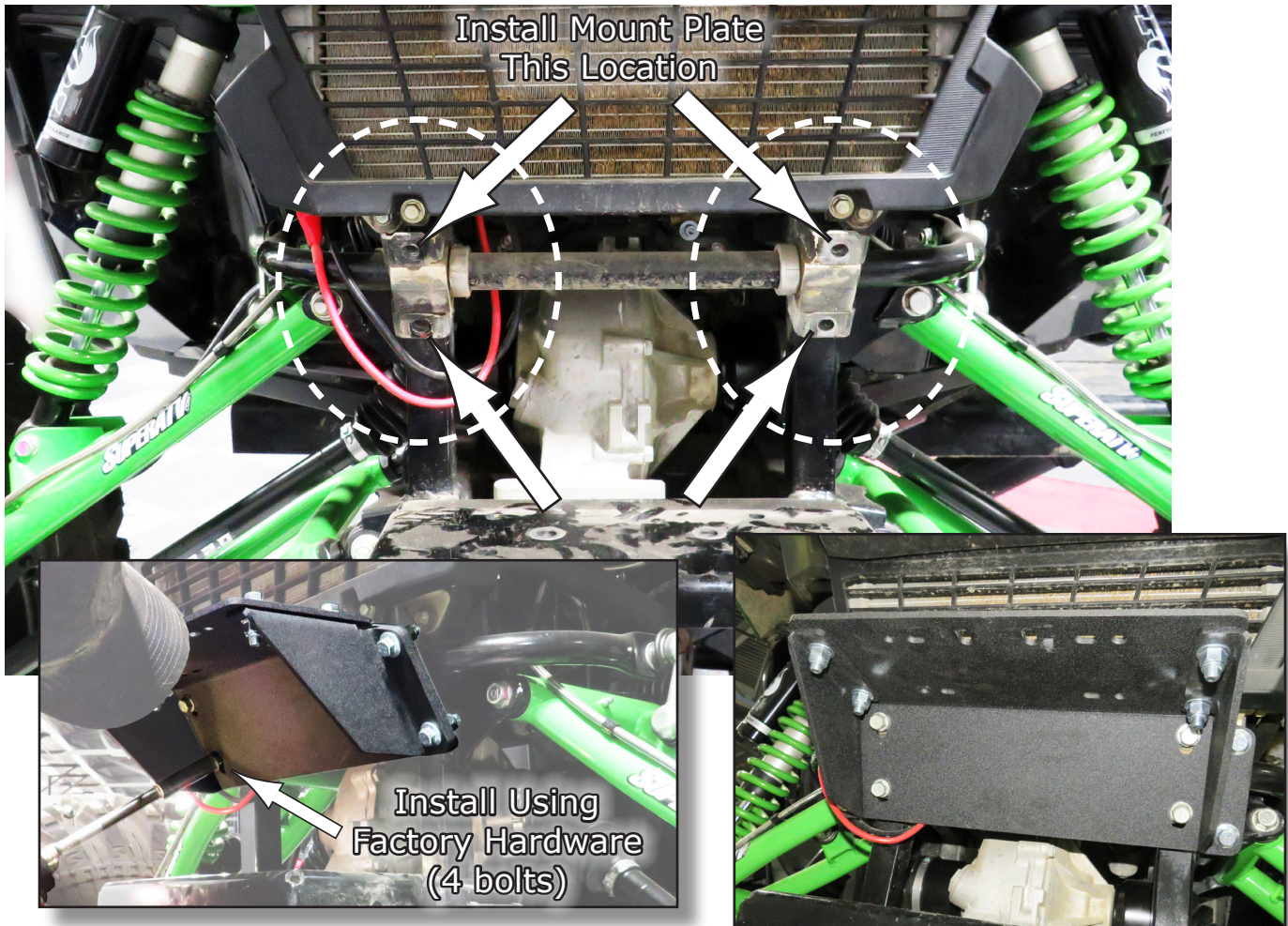


Fig.2

3. At this point you can install your Winch, if you have one, onto the Winch Mount as shown in **Fig.3**.



Fig.3

4. Now install the Brush Guard onto your vehicle frame as shown using the **M10x30 1.25 Hex Flanged** bolts, one on each side, provided in your kit. See **Fig.4**.

NOTE. Leave these two (2) a little loose until the top bolts are installed in the next step.

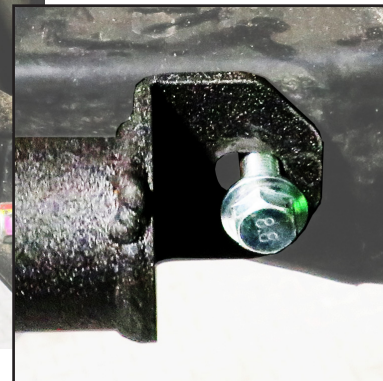
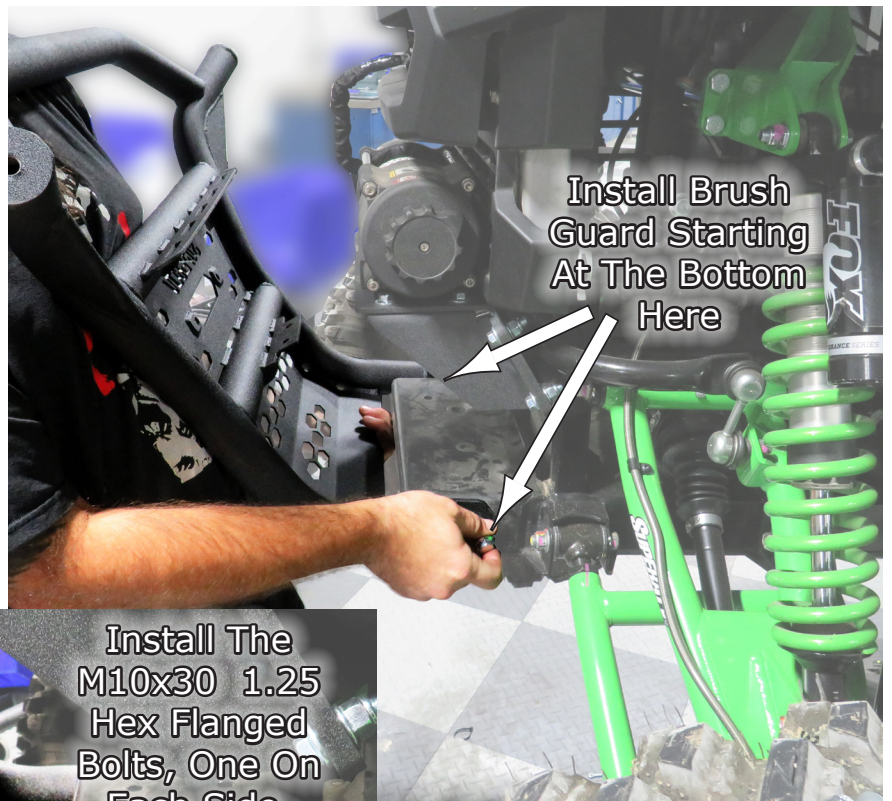


Fig.4

5. Next, you will notice on the inside of the **Brush Guard** in the middle, there is a tab with two (2) holes in it. As you lift the **Brush Guard** up against the machine, the tab will slide under the **Winch Mount Plate** and those holes will align with the holes on the **Winch Mount** as shown in **Fig.5a**. Then install two (2) of the **M8x25 Hex Head bolts** and **M8 Nylock Nuts** to fix in place and tighten secure. See **Fig.5b**.



Fig.5a

Then go back to the other two (2) lower bolts you installed first, and tighten them secure now as well.

6. After the **Brush Guard** is installed in place, find the **Winch Fair Lead** and two (2) **M8x30 Socket Head bolts** included in the **Winch Kit**, and the **Fair Lead Mount Adapter** included in your brush guard kit and install the fair lead to the **Fair Lead Mount Adapter** using the **M8x30 and M8 Nuts** as mentioned. See **Fig.6a-b**. Then install the assembly to the **Brush Guard** using the **M8x16 Button Head screws** provided in your kit. See **Fig.6c**.

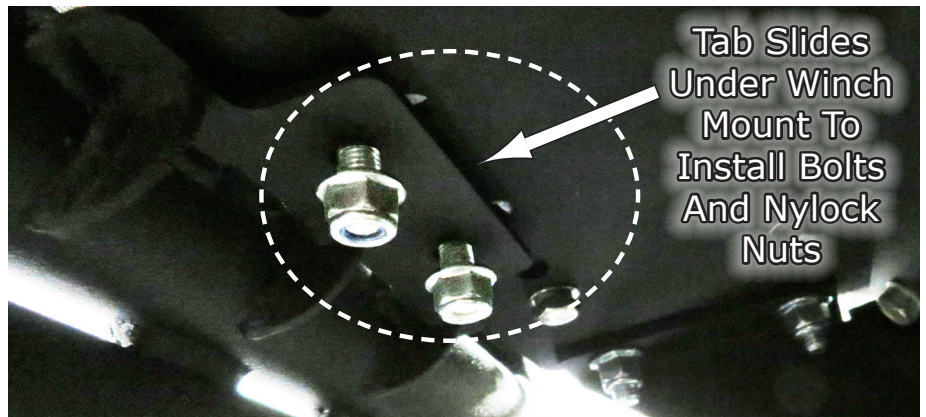


Fig.5b

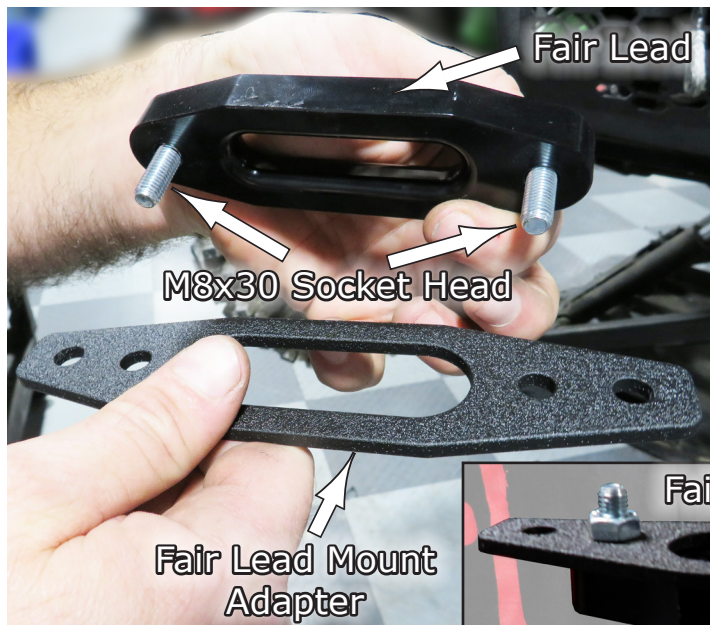


Fig.6a



Fig.6c



Fig.6b

7. If you **DO NOT** have a Winch for your vehicle at the moment, we have supplied a **Fair Lead Mount Cover Plate** to cover the cable hole in front for better aesthetics. This is optional but available to you if needed. See **Fig.7**.



Fig.7

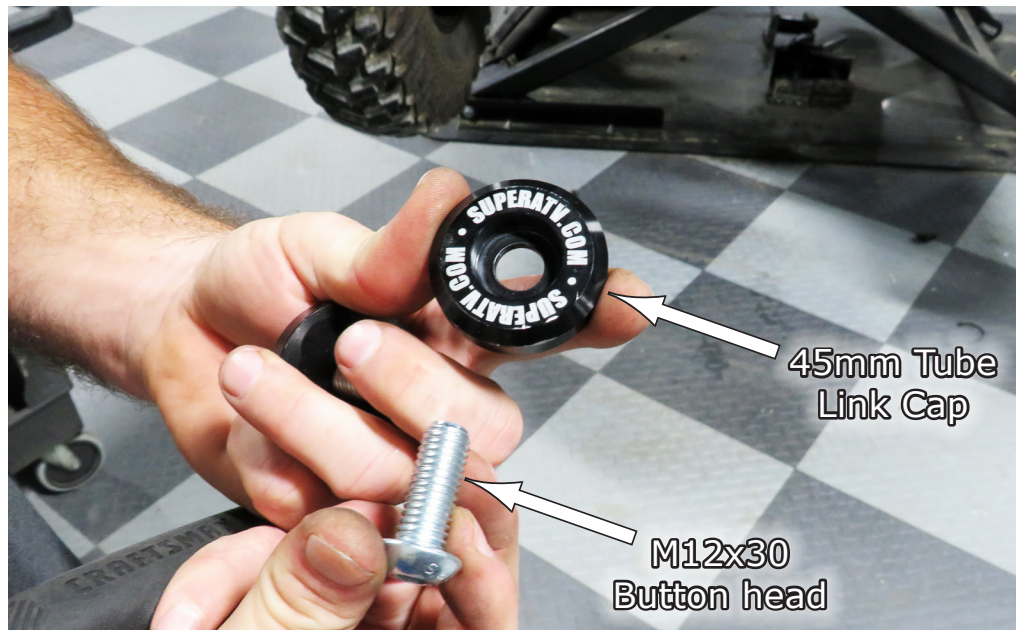


Fig.8a

8. The last thing to do for this install is to install the **Tube Link Caps**. There are two (2) of these, one for each side of the **Brush Guard**. Install these into the ends of the outer most tubes by using the **M12x30 Button Head Screws** and the **Caps** all provided in your kit. See **Fig.8a-b**.

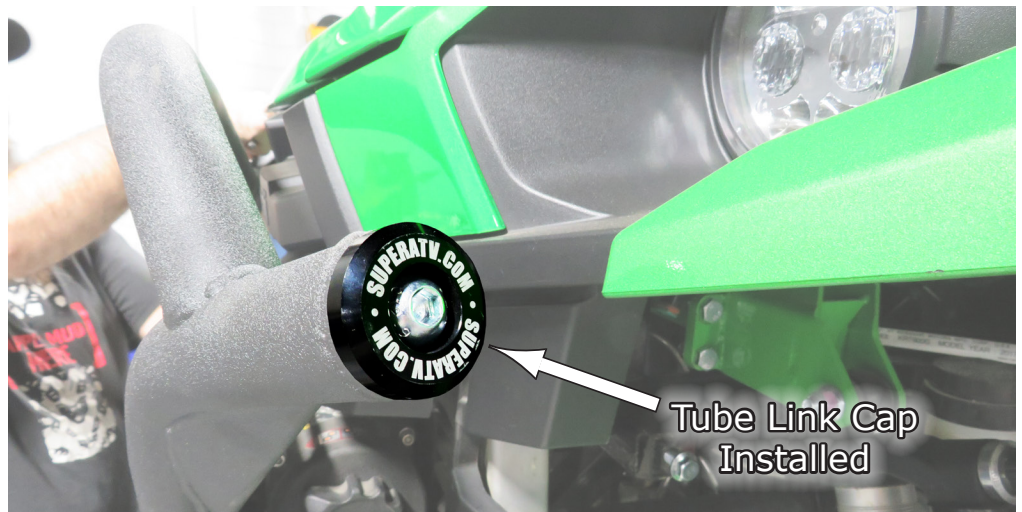


Fig.8b

9. We have also included two (2) sets of **Light Bar Brackets** that you can use to install a light bar should you have one or decide to get one in the future. See **Fig.9a**. These can mount right on the **Brush Guard** as shown in **Fig.9b**.



Fig.9a



Fig.9b

Liability Statement

SuperATV's® products are designed to best fit user's ATV/UTV under stock conditions. Adding, modifying, or fabricating any factory or aftermarket parts will void any warranty provided by SuperATV® and is not recommended. SuperATV's® products could interfere with other aftermarket accessories. If user has aftermarket products on machine, contact SuperATV® to verify that they will work together.

Although SuperATV® has thousands of satisfied customers, user should be aware that installing lift kits, long travel, or suspension kits, tires, etc. will change the ride of machine and may increase maintenance and part wear. Operating any off-road machine while, or after, consuming alcohol and/or drugs increases risk of bodily harm or death. No warranty or representation is made as to this product's ability to protect user from severe injury or death. SuperATV® urges operators and occupants to wear a helmet and appropriate riding gear at all times.

By purchasing and installing SuperATV® products, user agrees that should damages occur, SuperATV® will not be held responsible for loss of time, use, labor fees, replacement parts, or freight charges. SuperATV®, nor any 3rd party, will not be held responsible for any direct, indirect, incidental, special, or consequential damages that result from any product purchased from SuperATV®. The total liability of seller to user for all damages, losses, and causes of action, if any, shall not exceed the total purchase price paid for the product that gave rise to the claim.

SuperATV® will warranty only parts provided by SuperATV®. Any damage or problems with OEM housings, bearings, seals, or other manufacturers' products will not be covered by SuperATV®. SuperATV® parts and products are not warranted if item was not installed properly, misused, or modified.

Installing, adding, modifying, or fabricating any factory or aftermarket product to your ATV/UTV may violate certain local, state, and federal laws. Be advised that laws vary depending on town, city, county, state, etc. Use of certain products on public streets, roads, or highways may be in violation law. The Buyer is solely and exclusively legally and personally responsible for any violation of the law by the installation or use of the product. You must abide by all local, state, and federal laws, including but not limited to vehicle safety, traffic laws, and ordinances. It is your responsibility to know the laws and how they apply to you.

The Buyer is responsible to fully understand the capability and limitations of his/her vehicle according to manufacturer specifications, warnings and instructions and agrees to hold SuperATV® harmless from any damage resulting from failure to adhere to such specifications, warnings and/ or instructions. The Buyer is also responsible to obey all applicable federal, state, and local laws and ordinances when operating his/her vehicle while using this product, and the Buyer agrees to hold SuperATV® harmless from any violation thereof.

If you have any problems/questions on this kit, contact us by email at [Superatv.com](mailto:sales@superatv.com).

Need help with your installation?



sales@superatv.com



www.superatv.com



1-855-743-3427



8:00am - 9:00pm EST M-Th
8:00am - 7:00pm EST Friday
9:00am - 2:00pm EST Saturday

*Thank You
For Choosing*



Like SuperATV on Facebook to keep up to date on new products!