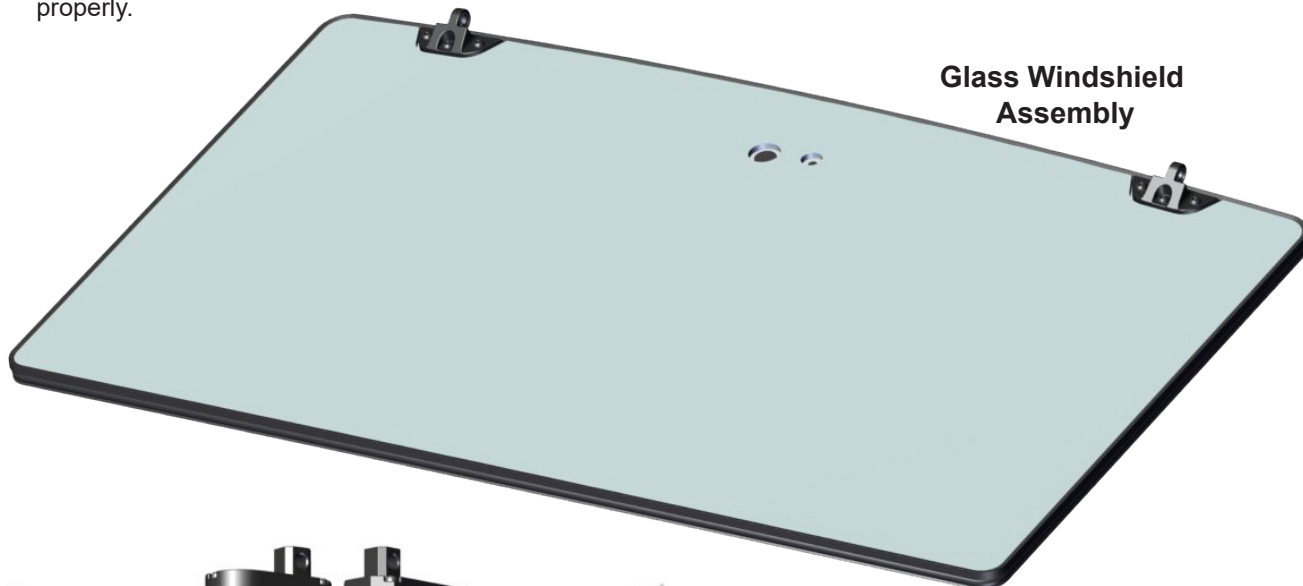




# INSTALLATION INSTRUCTIONS

## FLIP GLASS WINDSHIELD: FGWS-P-RAN1K And Optional Windshield Wiper Kit

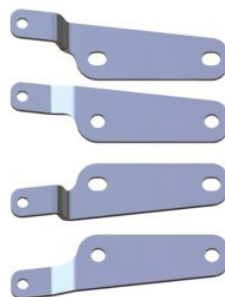
- Please look through and read these instructions BEFORE starting so you understand what processes you'll be doing, and possible extra tools you may need.
- Do Not discard product packaging until installation is complete and functioning properly.



**Glass Windshield  
Assembly**



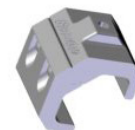
**Windshield  
Actuator**



**Actuator  
Mount  
Brackets**



**Hinges**



**Channel  
Tube  
Clamp**



**Windshield  
Switch**



**30/40 Amp  
Windshield Relay**



**Rubber D-Seal**



**Rubber Flat Seal**



**Windshield Wiper Motor Assembly**



**8mm EPDM Flexible Hose**



**Wiper Fluid Tank**



**Wiper Arm**



**20" Wiper Blade**



**M8x30 Shoulder Screw (2pcs)**



**M8x25 Button Head (8pcs)**



**M6x30 Shoulder Screw (4pcs)**



**M8 Flanged Nylock (4pcs)**



**M8 Nylock Nut (2pcs)**



**M5 Flanged Nylock (4pcs)**



**M8 Flat Washer (4pcs)**



**M6 Flat Washer (2pcs)**



**Hinge Misalign Bushing (4pcs)**



**Flanged Sleeve Bushing (8pcs)**

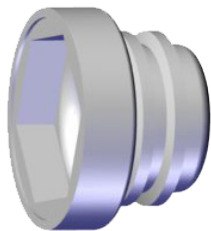


**10" Harsh Environment Cable Ties (4pcs)**

**Wiper Mounting Kit**



**M18 Washer**



**Pivot Seal Boot**



**M8 Wave Washer**



**M8 Hex Nut**



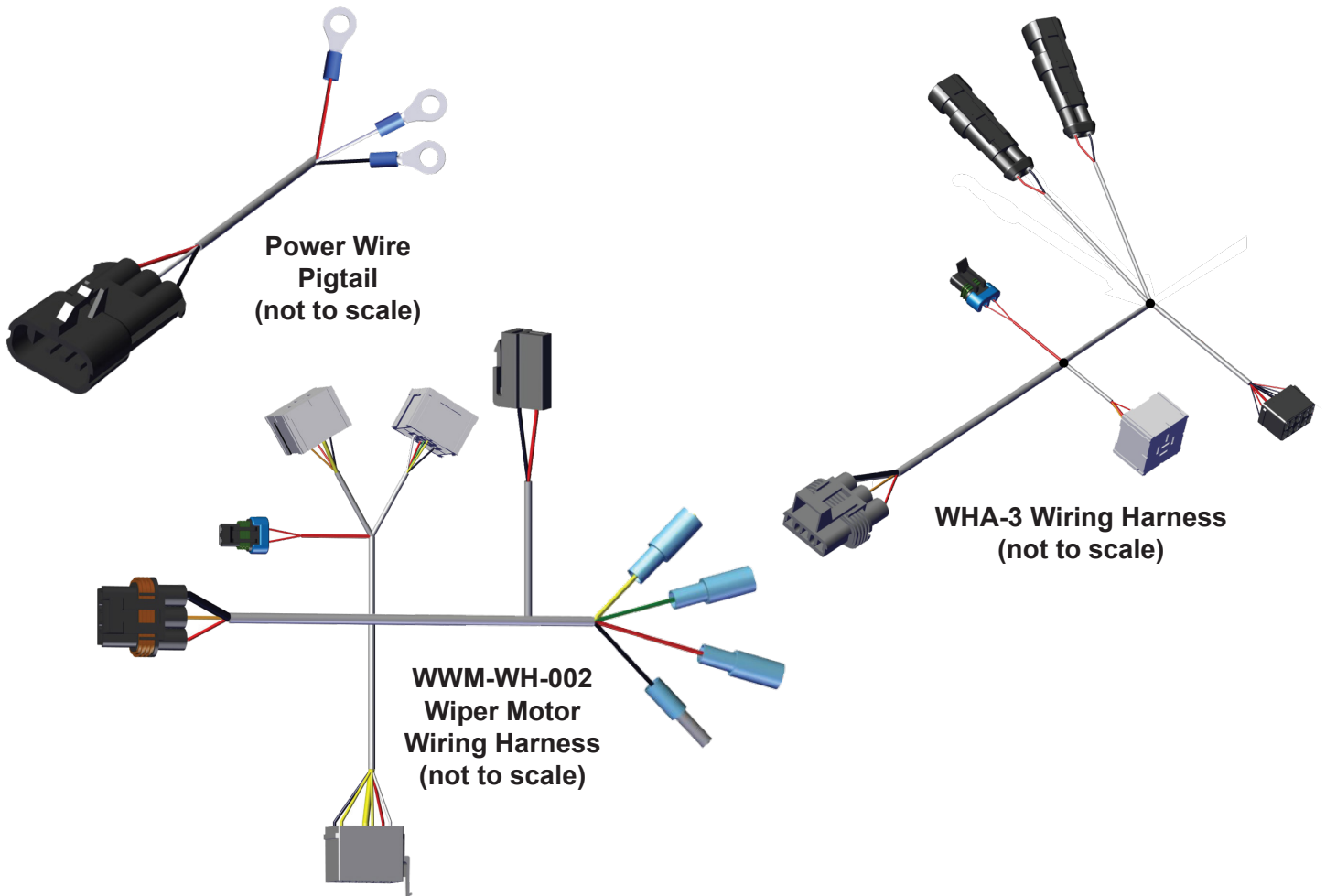
**M6 Fender Washer**







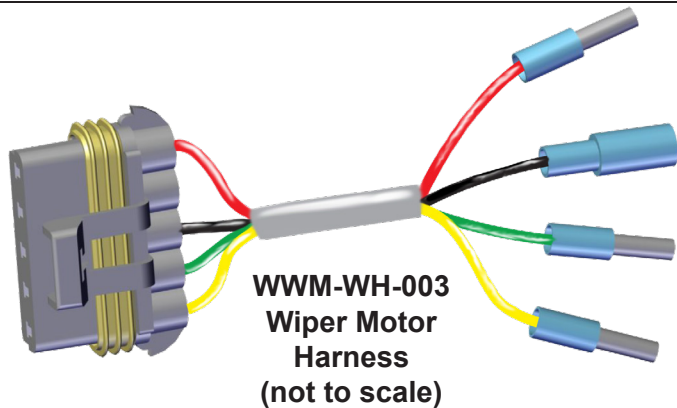
**M6 Hex Nut**



**M6 Spray Nozzle**



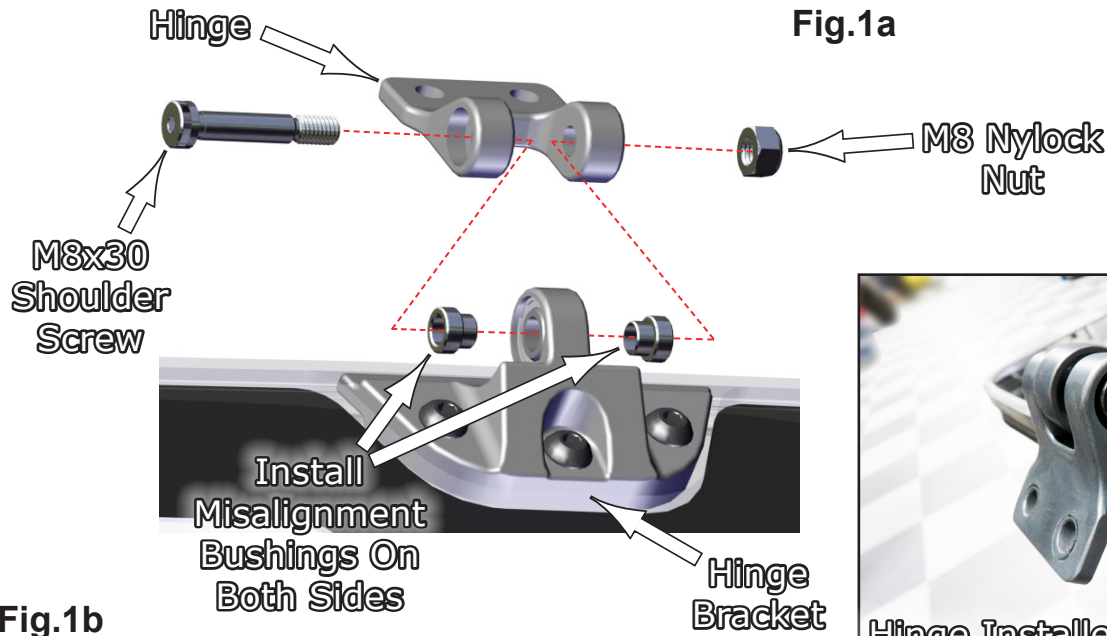
Harness Hardware Kit		
		
<b>M6x20 Button FL. Head (2pcs)</b>	<b>M6 FL. Nylock Nut (2pcs)</b>	<b>#8 FT Self Tap (2pcs)</b>
		
<b>150mm Harsh Environment Cable Tie (6pcs)</b>		



1. The first thing to do is to locate the main **Windshield Assembly**, see **Fig.1a**. It will come mostly pre-assembled, however you will need to install a few things to get it ready to install onto your vehicle. Find the **Misalignment Bushings**, there are four (4) in your kit, and install one on each side of the **Hinge Bracket** as shown in **Fig.1b**. Next, find the **Hinge** and slide it over the bushings in the hinge bracket, then install the **M8x30 Shoulder Bolt** and **M8 Nylock nut** as shown in **Fig.1b**.



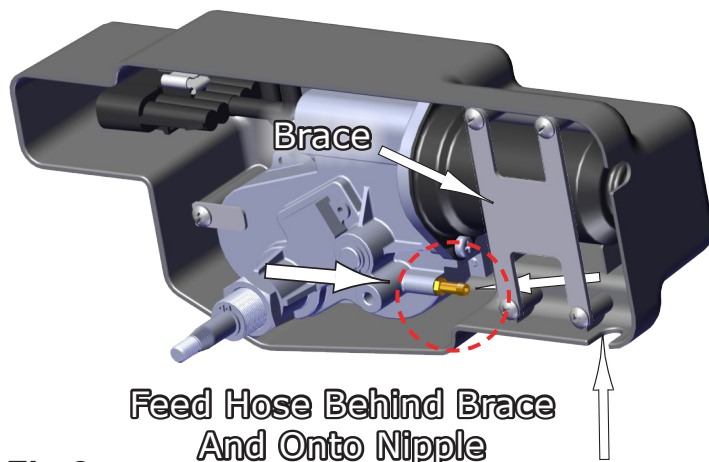
**Fig.1a**



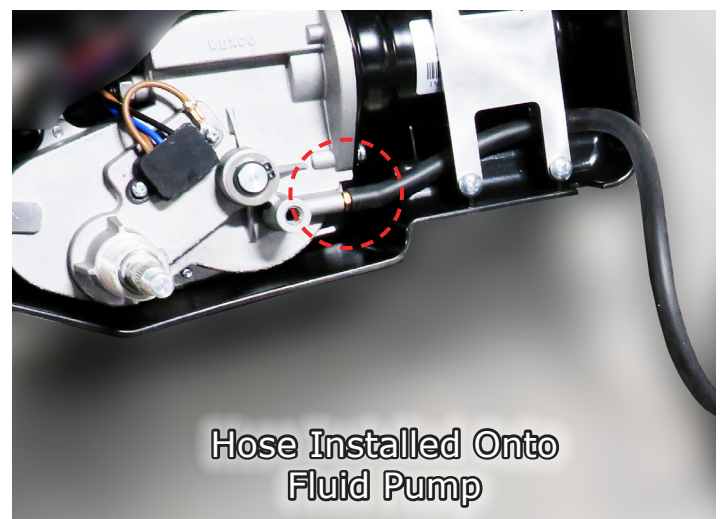
**Fig.1b**



2. Next you will install the **Wiper Motor Assembly**, but first you need to install a few things on it to get it ready. First find the **8mm EPDM Flexible Rubber Hose** in your kit and feed it behind the **Metal Brace** and slip onto the brass nipple of the fluid pump as shown in **Fig.2a**. **Fig.2b** shows the hose installed for your reference.

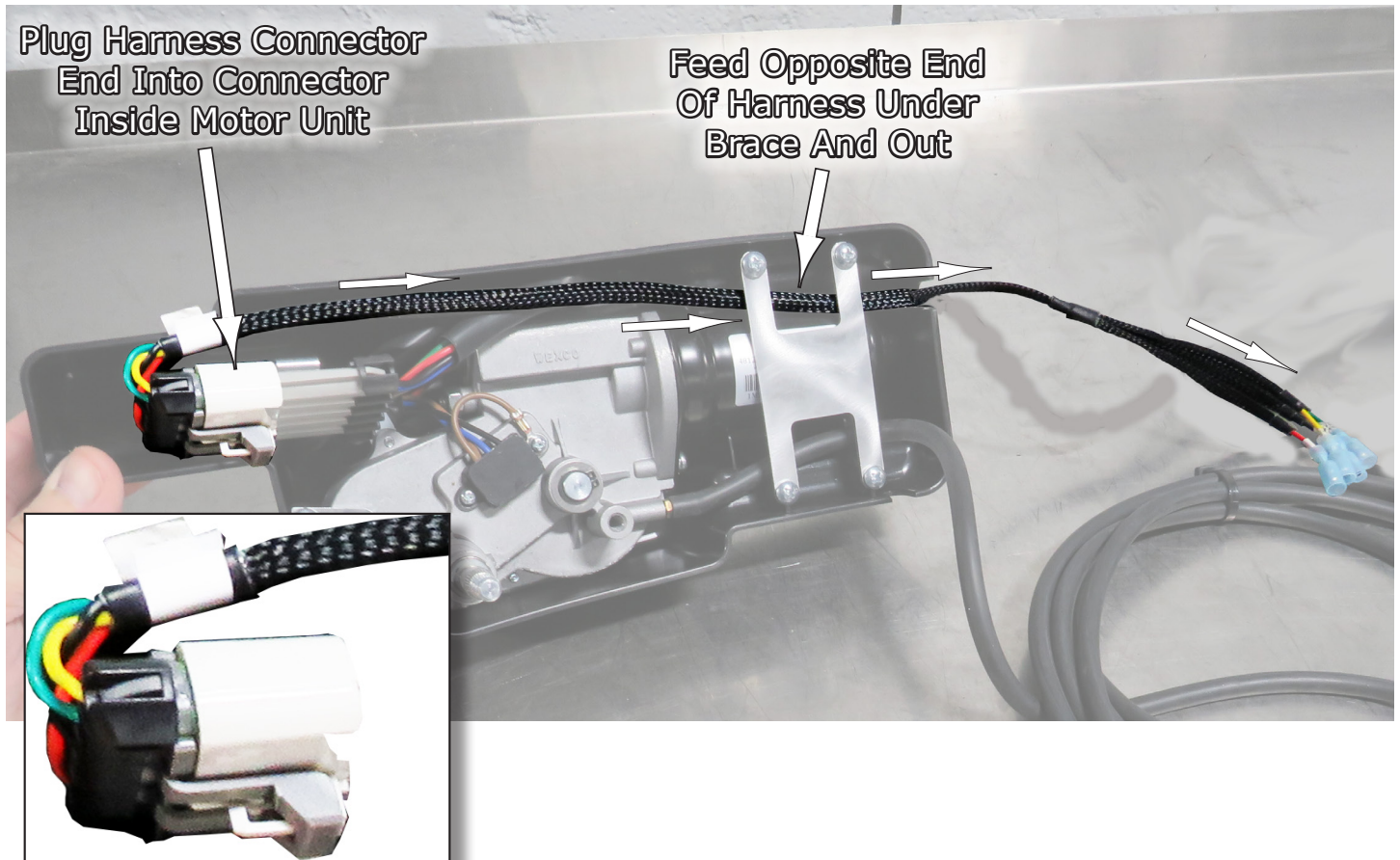


**Fig.2a**



**Fig.2b**

3. Now find the cable harness that matches the colored wires in the pics in **Fig.3** and plug the connector end into the connector inside the **Wiper Motor** unit also shown in **Fig.3**. Then run the other end of the harness that has the four (4) separate terminal ends on it back thru and under the Steel Brace and out the slot at the end of the box as shown in **Fig.3**. (The harness shown has been modified for illustration purposes and is actually much longer than shown)



**Fig.3**



4. Next, you may want to wrap the cable harness and wiper hose together and Zip-Tie them together for now to make it easier to install the **Wiper Motor** into the **Windshield**. The choice is yours. See **Fig.4**.



**Fig.4**

5. Now you can install the **Wiper Motor** onto the Windshield. Install the **Wiper Motor** on the inside of the Windshield as shown in **Fig.5a**, using the **M18 Washer** and the **M18 Hex Nut** that came with the motor. Then install the **M6 Spray Nozzle** using the **M6 Fender Washer** and **M6 Hex Nut** and secure both. See **Fig.5a-d**.

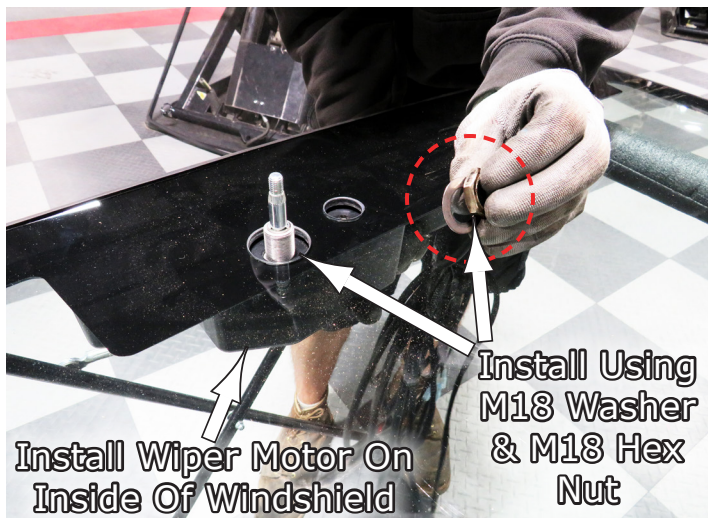


Fig.5a



Fig.5b



Fig.5c



Fig.5d

6. Next you need to install the **Pivot Seal Boot** onto the **Wiper Post**. This will simply slip over the Wiper Post and down into the window well to cover the nut and washer. See **Fig.6a-b**.

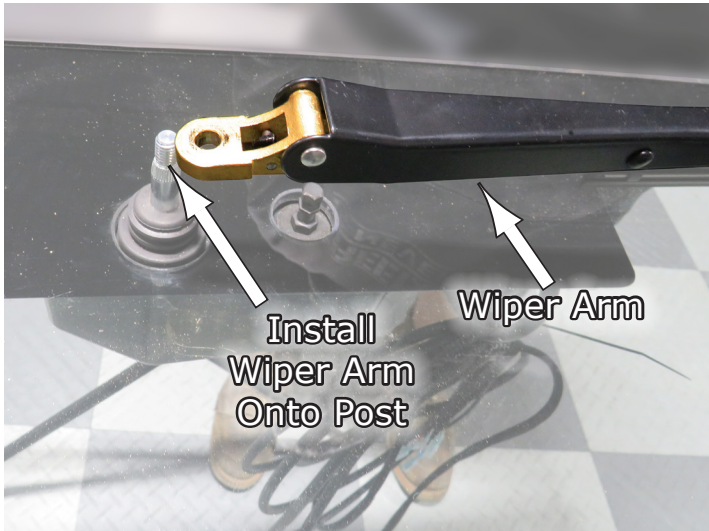


Fig.6a

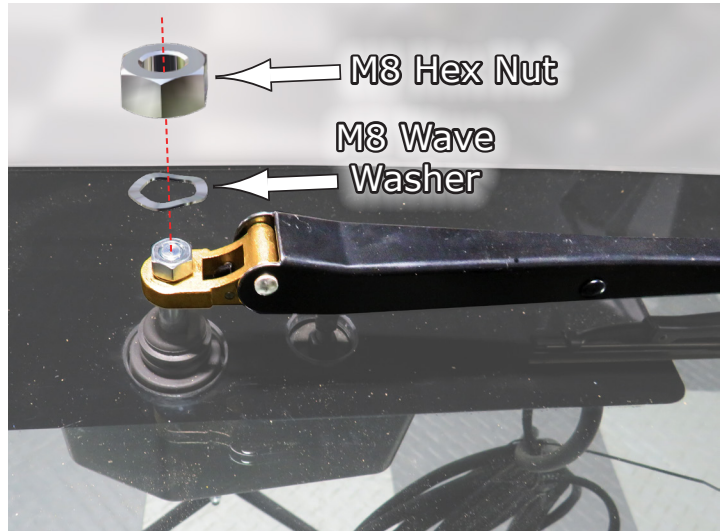


Fig.6b

7. After the boot is on, now install the **Wiper Arm** using the **M8 Hex Nut** and **M8 Wave Washer** also provided in your kit. Snug Secure.



**Fig.7a**



**Fig.7b**

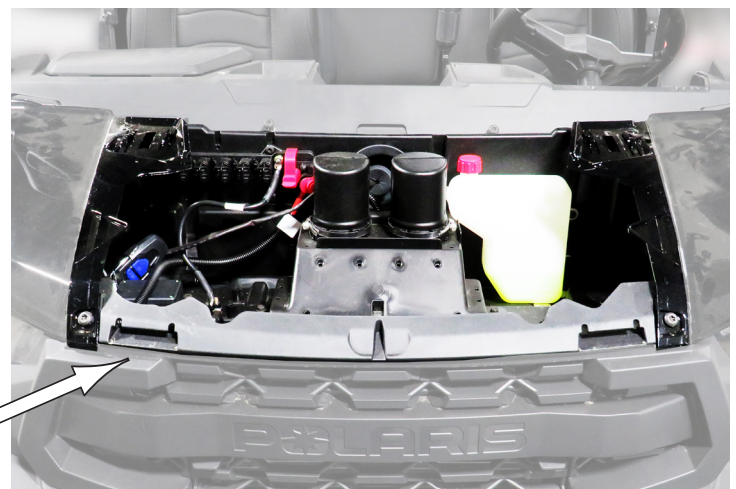
8. Next, you will need to remove the steering dash panel as shown in **Fig.8a**. then remove the center cup holders shown in **Fig.8b**, and then the hood as shown in **Fig.8c-d**.



**Fig.8a**



**Fig.8b**



9. Now remove the roof from the vehicle. To do that, remove the four (4) screws from the back side of it first, and any others attached, as shown in **Fig.9a**, and remove roof from vehicle. See **Fig.9b**.

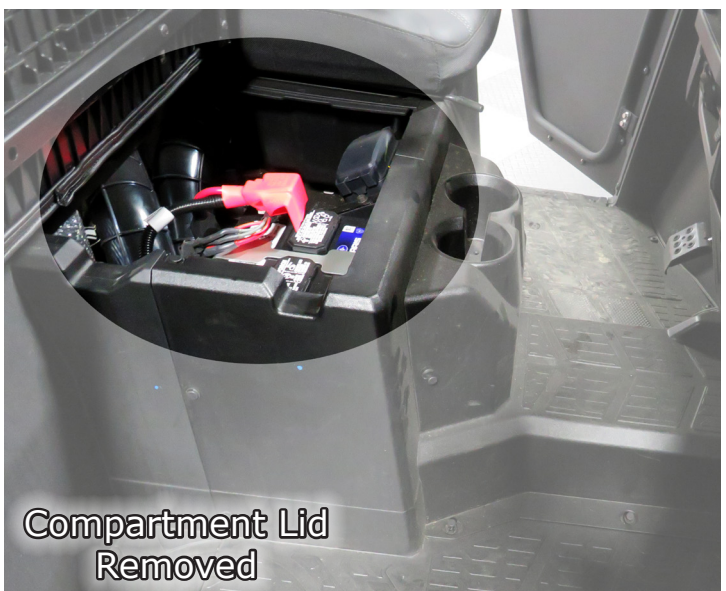


**Fig.9a**

**Fig.9a**



10. After the roof is removed, you now need to remove a few things inside the cab area to gain access to route the electrical items. First, Raise the seat and remove the **Battery Compartment Lid** as shown in **Fig.10a-b**.



**Fig.10a**

**Fig.10b**



11. Next, remove the **Cup Holder Console** by releasing the **Push-Pins** all around as shown in **Fig.11a**, and then remove it by lifting up and pulling out. See **Fig.11b**. **Fig.11c** shows interior items removed and ready.

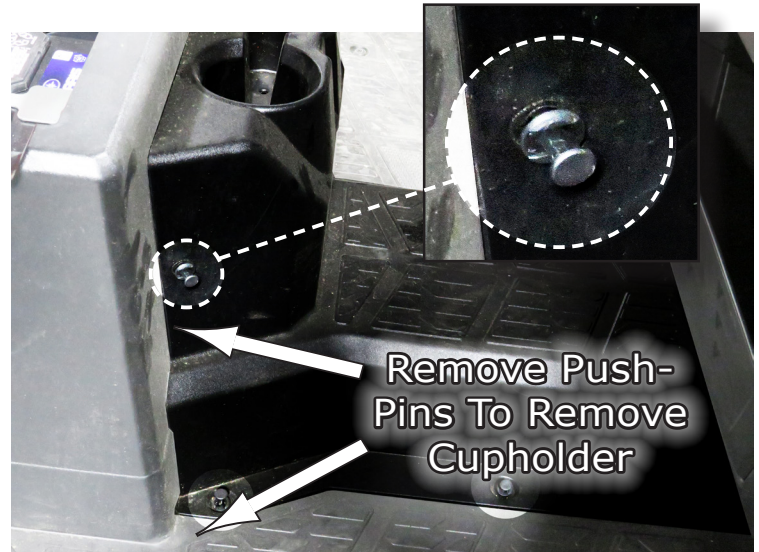


Fig.11a



Fig.11b



Fig.11c

12. Now you need to jump to the front windshield area as you will need to install some **Rubber Flat Seal** in the upper corners of that area. **Fig.12a** shows this area and will be applied to both Left and Right sides. First, cut a piece of the Seal long enough to cover the triangle corner bracket, as shown in **Fig.12b**.

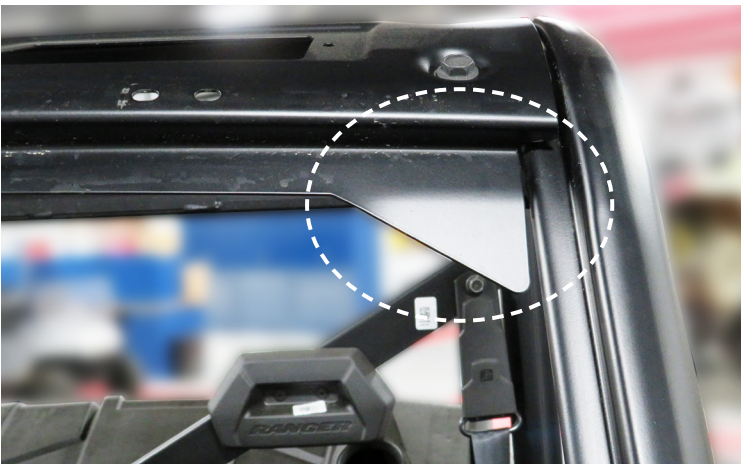


Fig.12a



Fig.12b

13. Next trace the back side of the Seal piece with a marker as you will cut to fit the corner triangle brackets and apply the Seal over top of them on each side. See Fig.13a-d.



Fig.13a

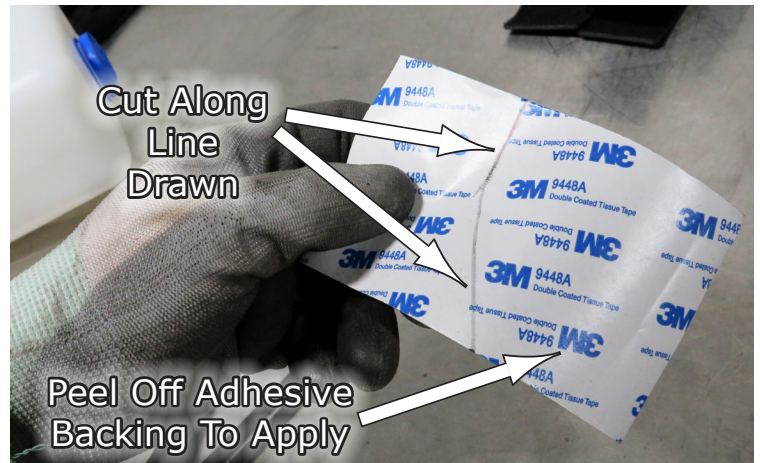


Fig.13b



Fig.13c



Fig.13d

14. The next thing to do is to cut out the Rocker Switch Locations for the Switches. Fig.14a shows the two (2) locations we chose for our switches. Cut out the perfered areas outlining the switches with a utility knife or similar as shown in Fig.14b. Fig.14c shows the slots cut out ready for the switches.

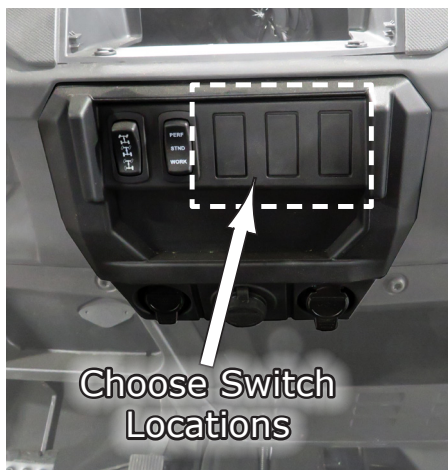


Fig.14a



Fig.14b

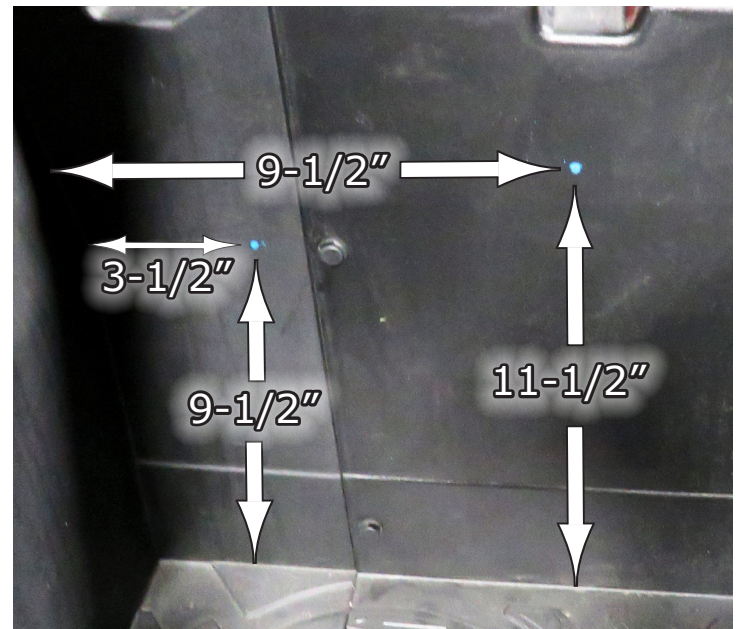


Fig.14c

15. Now you can prep for the **Wiper Fluid Tank** install. First you will need to mark two (2) hole locations in the side of the console panel. The Left location you will drill thru, and the Right location is for a screw for the Fluid Tank Holder. See **Fig.15a**. The Left location is measured at **3-1/2" from the side** and **9-1/2" from the bottom up**. The Right location is **9-1/2" from the side** and **11-1/2" from the bottom up**. See **Fig.15b**. Use a marker or paint pen to mark the center hole locations. Ours are Blue as shown.

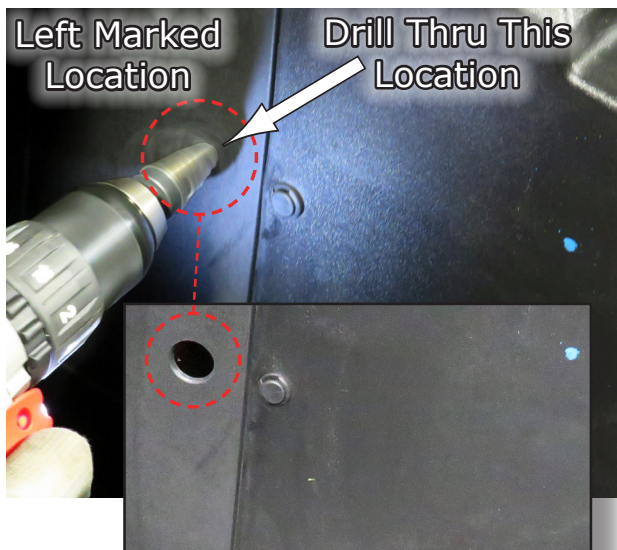


**Fig.15a**

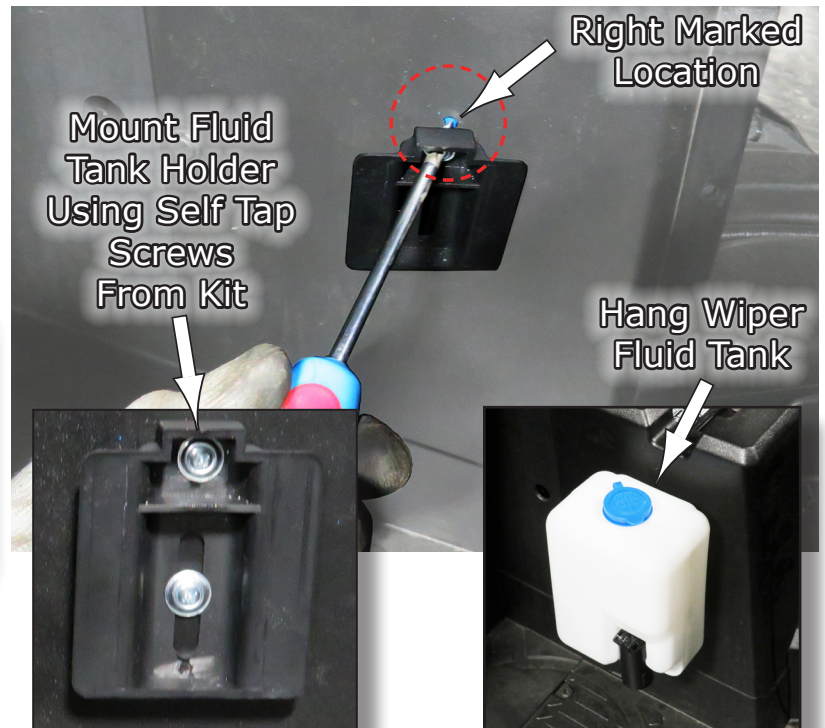


**Fig.15b**

16. Next, **Drill a 3/4" dia. Hole** thru at the **Left Marked Location** as shown in **Fig.16a**. Then locate the **Fluid Tank Holder** and mount it using the **Self Tap Screws** from that kit in two (2) places. The top holder screw hole goes at the **Right Marked Location** and the other screw below it as shown in **Fig.16b**. Be sure to straighten vertical the holder before installing the second screw so the tank will hang straight. Then hang the tank.



**Fig.16a**



**Fig.16b**



17. Now you need to remove the **Grab Handle** from the frame as shown in **Fig.17a-b**.



**Fig.17a**

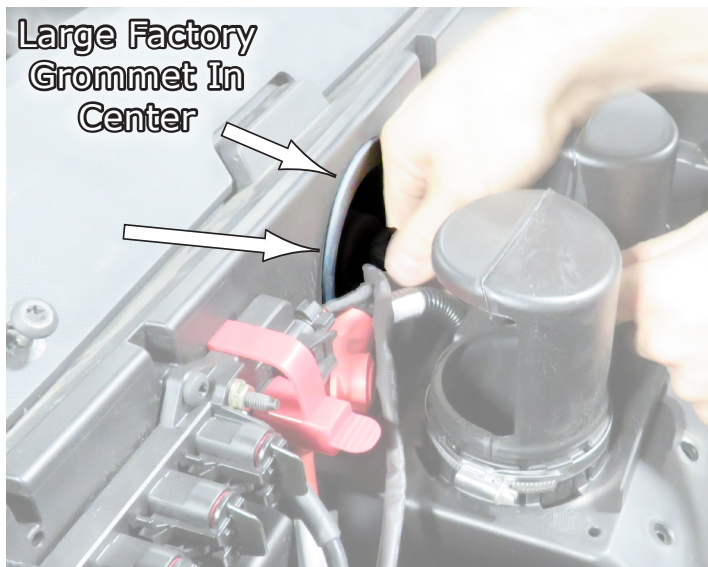


**Fig.17b**



18. Once the handle is removed, the next thing you need to do is start to feed the **Harness**. You will move to the front of the vehicle to the firewall beneath the front windshield. In the center there is a **Large rubber Grommet** where the **Harness** and wiring pass thru the firewall. We found it easier to cut the grommet to make it easier to pass the **Harness and Connectors** thru it instead of trying to squeeze them thru the factory slits in the center of the **Grommet**. The option is yours however.

**Fig.18a-b** shows the location of the Grommet and how we cut the it, which can also be installed back into it's original position after routing the **Harness**.



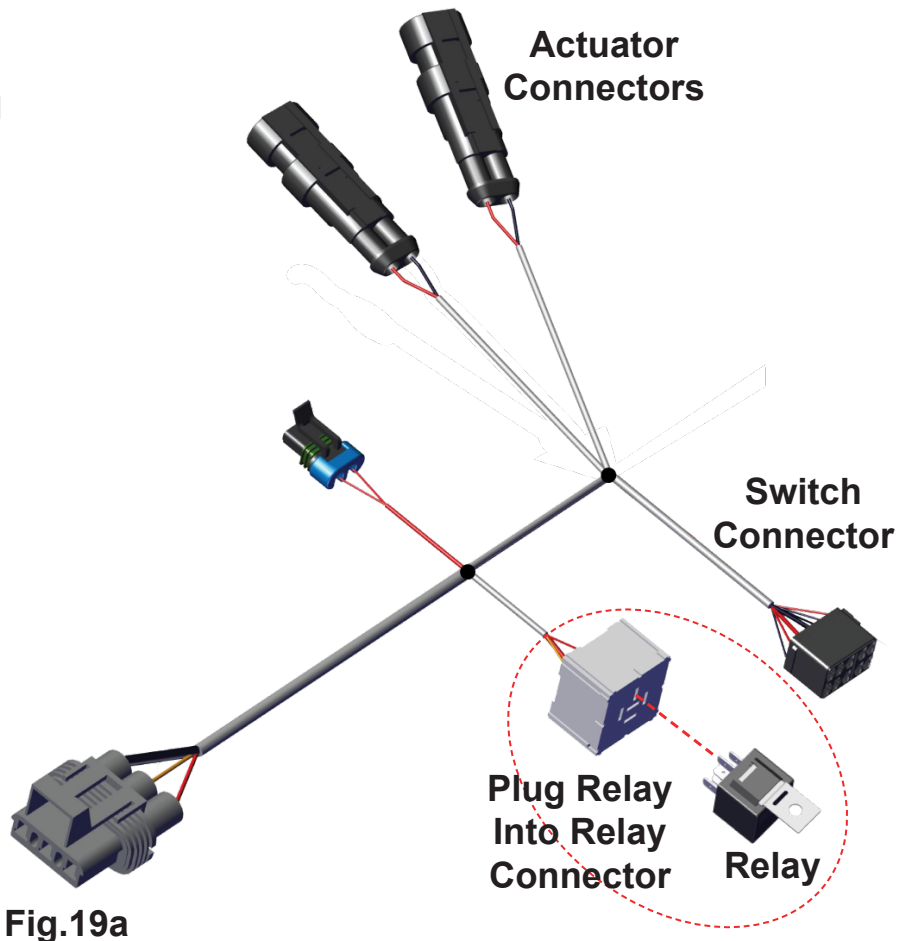
**Fig.18a**



**Fig.18b**

19. Now locate the **WHA-3 Wiring Harness** that has the **Switch Connector**, **Relay Connector** and the two (2) small **Actuator Connectors** for your windshield actuators. Then find the **Windshield Relay** in your kit and plug it into the relay connector as shown in **Fig.19a**.

Next, route the **Switch Connector** and the two (2) **Actuator Connectors** thru the grommet hole into the cabin area as shown in **Fig.19b**. Then from inside the cab, pull those in thru, **Fig.19c**, as you will then route them to each side in the following steps.



**Fig.19a**



**Fig.19b**



**Fig.19c**



20. Before you run the **Actuator Connectors** you will need to loosen the lower windshield dash panel which will make it easier to route them to each side. Remove the screws holding the bottom edge down so you can gain access under the panel as shown in **Fig.20a**. Then lifting the bottom edge of the panel up, pull the two (2) **Actuator Connectors** back thru towards the front as shown in **Fig.20b**. You will route one to the left and one to the right where you will hook them up to the **Actuators** in the following steps.

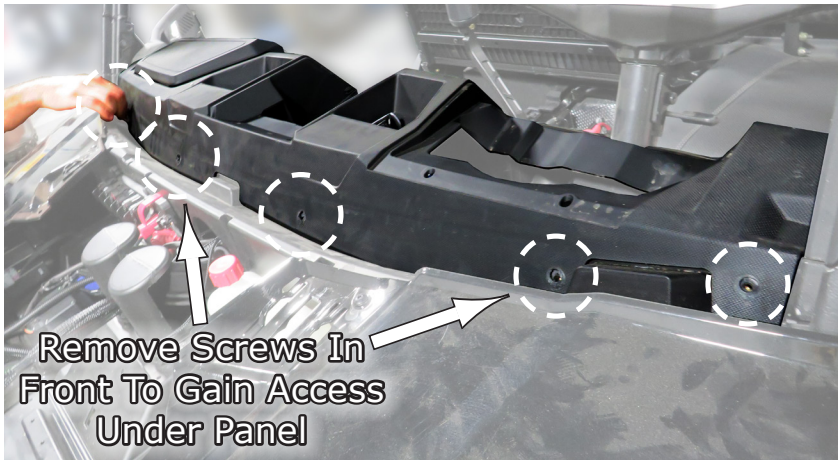


Fig.20a

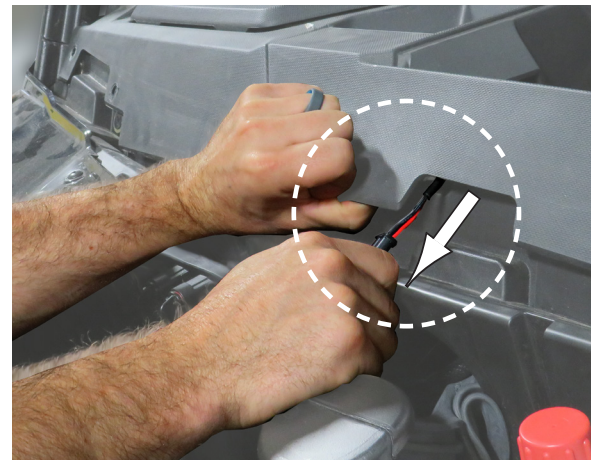


Fig.20b



21. Once you pull the **Actuator Connector** thru, lift the bottom edge of the panel giving space to slide the cable over to the vertical frame post where you will route the connector up and out the space between the panel and the frame and let hang there for now. See **Fig.21a-b**.



Fig.21a



Fig.21b



22. Next, find the **WWM-WH-002** Harness in your kit, and you will need to feed the terminal and switch connector ends thru the large grommet into the dash area as shown in **Fig.21a**. Then pull the terminal ends out above the steering wheel as shown in **Fig.21b**.



**Fig.22a**

23. Now pull the **Switch Connectors** out thru the two (2) slots you cut previously and let hang for now as shown in **Fig.23**.

24. The next thing will be the **Fluid Tank Power Cable** that connects to the pump. This one will be the real long small harness cable, which is part of the **WWM-WH-002** Harness you previously routed. Route it from under the dash along the center console area to under the **Battery Compartment**. It will go inside the compartment, See **Fig.24**, and over to the hole you drilled out previously as you'll see in the following steps.



**Fig.22b**

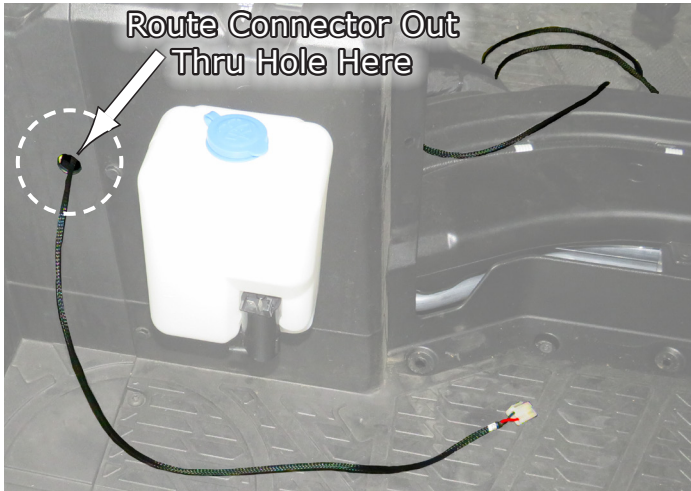


**Fig.23**



**Fig.24**

25. After routing the cable into the **Battery Compartment** previously, now feed the connector end out thru the hole in the side, that you drilled thru previously, as shown in **Fig.25a**. Then plug it into the top of the **Tank Pump** as shown in **Fig.25b**.



**Fig.25a**



**Fig.25b**

26. Now you can install the **Switches** into the **Harness Connectors** as shown in **Fig.26a-b**. Be sure **NOT** snap them into place until you have tested that the system works as intended, to keep you from having to remove any panels. See **Fig.26a-b**.

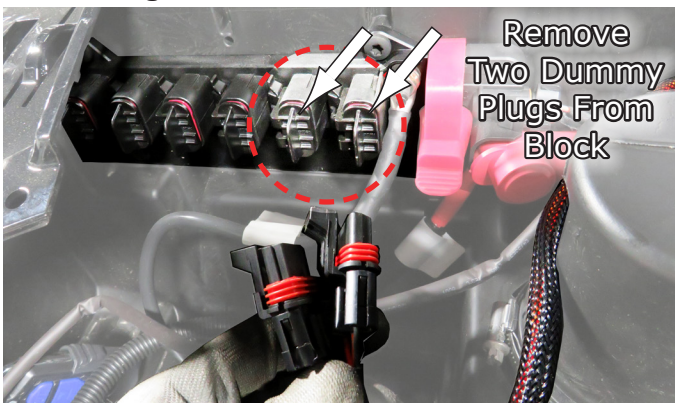


**Fig.26a**

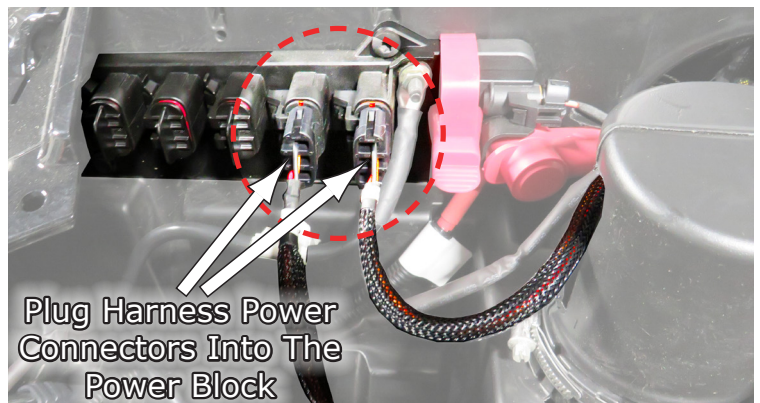


**Fig.26 b**

27. Now move up front to the power supply block attached to the firewall, and remove two (2) of the dummy plugs from the block and plug in the two (2) Power Connectors from your harnesses. See **Fig.27a-b**.



**Fig.27a**



**Fig.27b**



28. Now that the power connectors are connected, you need to plug in the **Relays** into the **Relay Connectors** as shown in **Fig.28a**. Then you can mount them where you wish to as the hardware to mount them is not included in your kit. However, we have chosen one location to give you an idea should you like to mount them in this location. See **Fig.28b**.



Fig.28a



Fig.28b



29. Since all the Harnesses are run thru the **Large Grommet**, and if you split it like we did, you can now reinstall the Grommet back to it's original place wrapping it around all the cables and back into the firewall as shown in **Fig.29a-b**.



Fig.29a

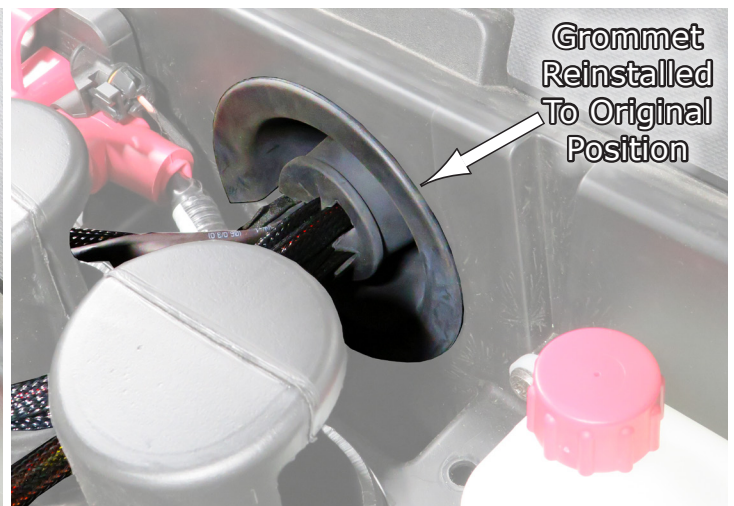
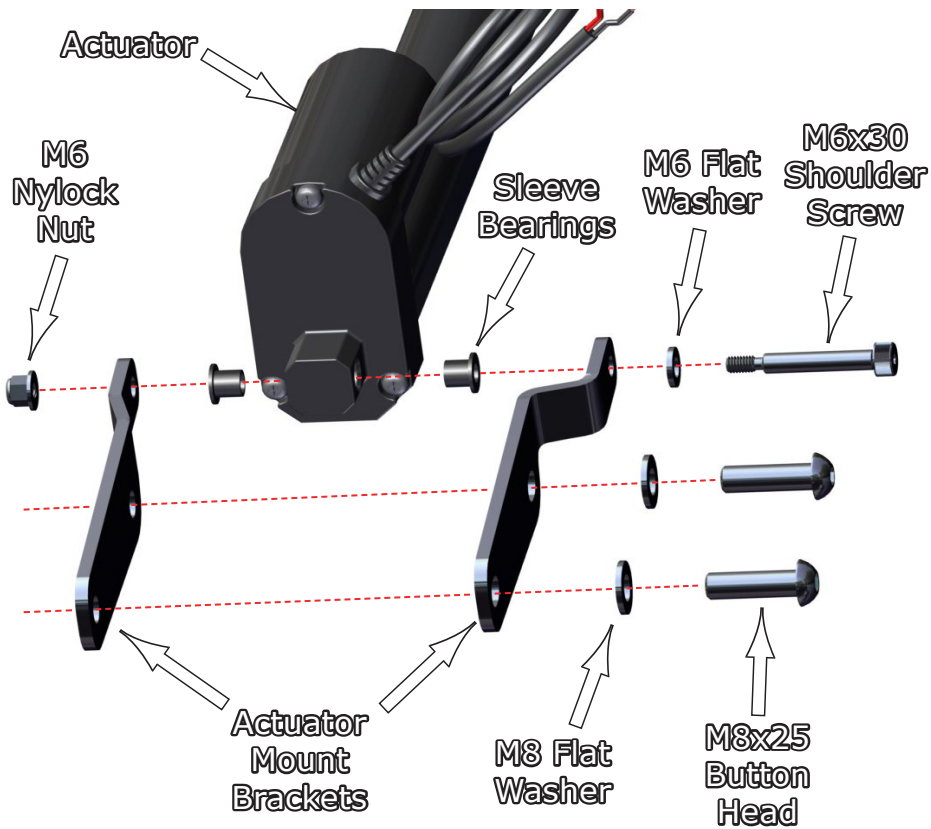


Fig.29b

30. Now it's time to assemble the **Actuators** with all the **Brackets** to get them ready to install on your machine. These are what raise the Windshield up and down. Use the hardware from your kit or that came with the Actuators to assemble. **Fig.30** shows how to install.

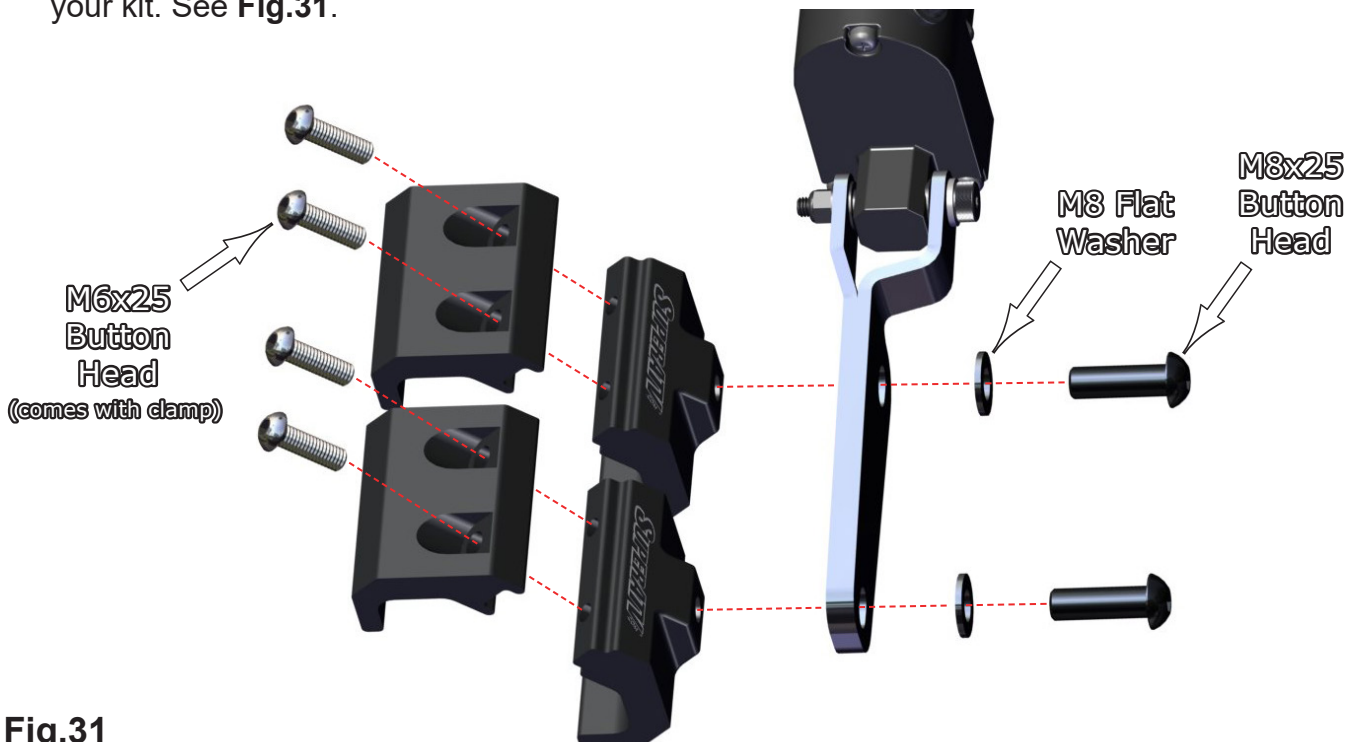


**Fig.30a**



**Fig.30b**

31. Next, assemble the **Clamps** onto the **Actuator Mount Brackets** with the hardware provided in your kit. See **Fig.31**.



**Fig.31**

32. Next, loosen the clamps and install them onto the frame as shown in **Fig.32a**. Keep the screws a little loose so you can adjust the position of the actuator after you have the Windshield in stalled. You will need to adjust both sides to make sure they work as intended. See **Fig.32a-b**.



Fig.32a



Fig.32b

33. After both **Actuator Assemblies** have been installed onto the frame, you can now place the **Windshield** on the vehicle ready to line everything up as shown in **Fig.33a**. Then, align the holes in the upper **Windshield Hinge** to the holes in the frame and install one (1) **M8x25 Button Head Screw** and one (1) **M8 Flanged Nylock Nut** into the upper hinge section thru the frame as shown in **Fig.33b**. Do **NOT** tighten these yet until all bolts and screws are threaded in first. Install one in the Left Side and one in the Right Side to start as shown in **Fig.33c**. Leave a little loose, then once those are threaded in, install the other two screws and tighten secure.



Fig.33a



Fig.33b



Fig.33c

34. Once both hinges are tightened to the frame, now you need to attach the lower **Actuator Cylinder** to the **Windshield Bracket**. Fig.34a-b show installing the cylinder to the **Bracket**. Install it using the **M6x30 Socket Shoulder Bolt** and **M5 Flanged Nylock Nut** and **Sleeve Bearings** provided in your kit, and tighten secure. Fig.34c shows installed. Repeat for both sides.

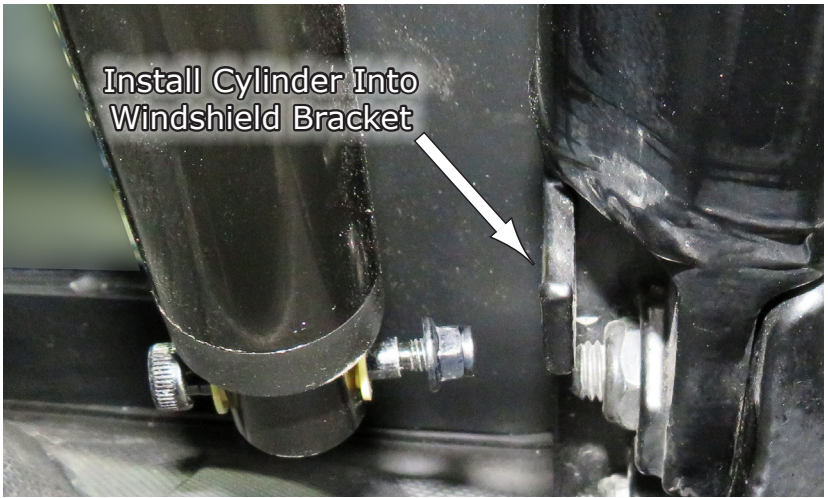


Fig.34a

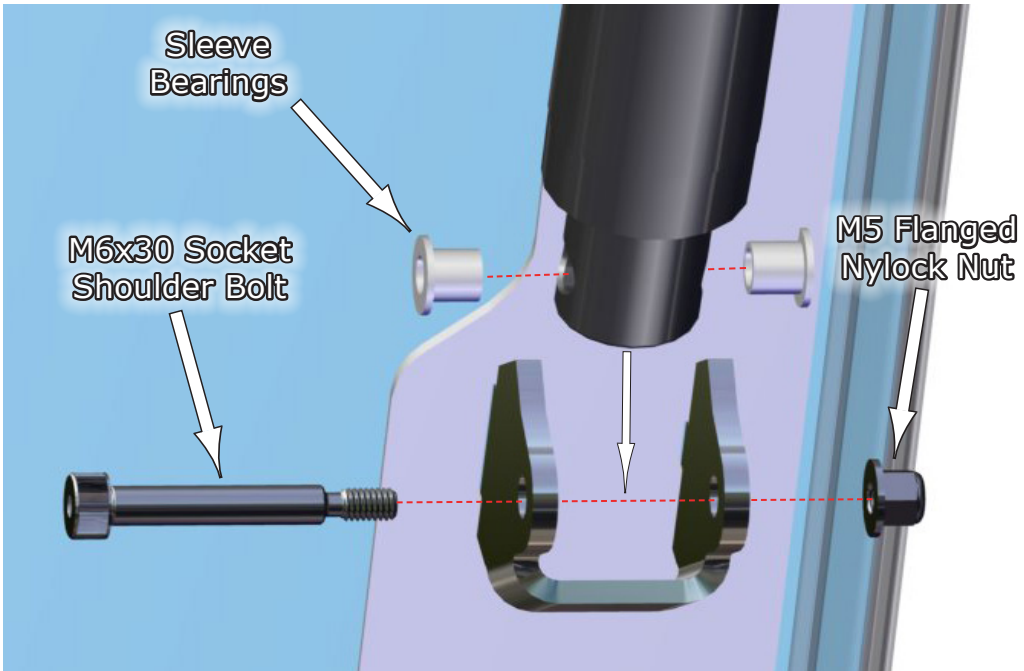
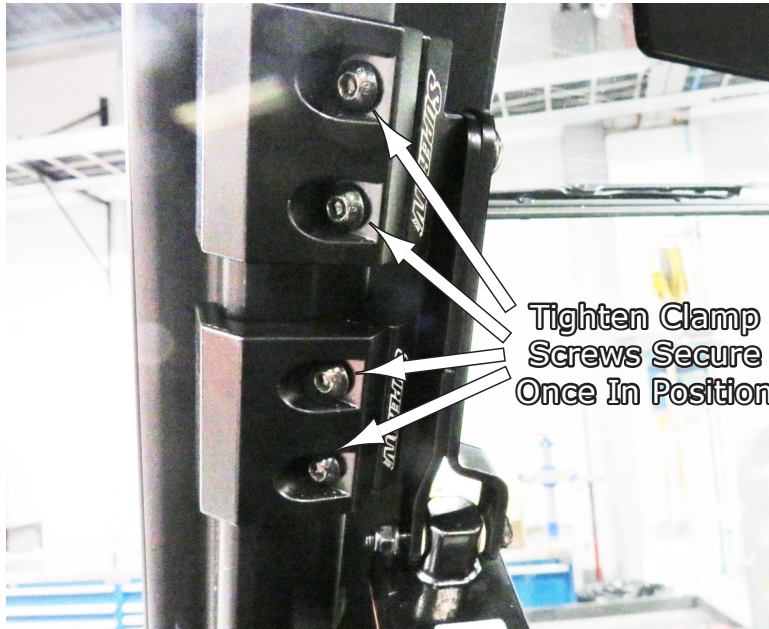


Fig.34b



Fig.34c

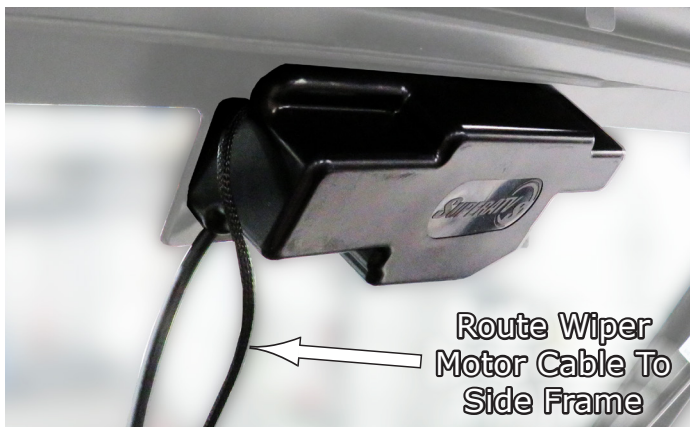
35. When you get both **Actuators** secure in the **Windshield Bracket**, adjust the **Frame Clamps** so nothing is binding, with the Windshield close or down, and tighten down the Clamps in that position. See **Fig.35a**. Then tighten the Actuator Mount Bolts if needed. See **Fig.35b**.



**Fig.35a**

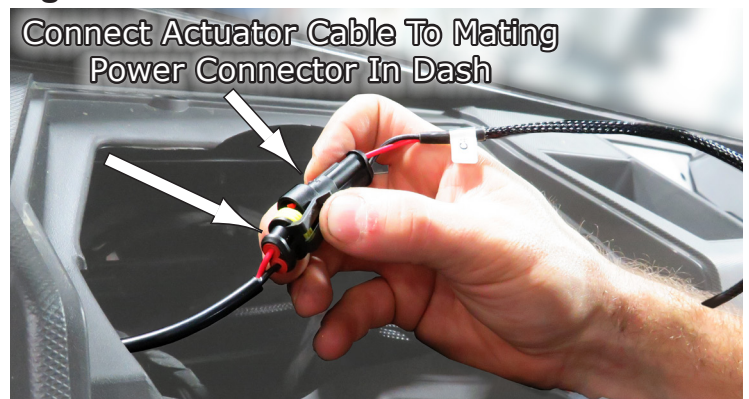
**Fig.35b**

36. Now that you have the Actuators ready, now you need to run the **Wiper Motor Harness** cable and **Wiper Motor Hose**. Then route the **Colored Terminal Ends** from the **Wiper Motor** over to the Driver's side frame column as shown in **Fig.36a-b**. Feed it down into the dash area in front of the steering wheel (dash opening). Then feed the cable from the Actuator on that same side down the same route and into the open area as well and connect to the power connector. See **Fig.36a-d**.



**Fig.36a**

**Fig.36b**



**Fig.36c**

**Fig.36d**

37. Next pick up the **Colored Terminal Wires** you first routed to the dash space in front of the steering wheel and connect them to the **Mating Colored Terminals** in your dash you routed previously. See **Fig.37a-b**.

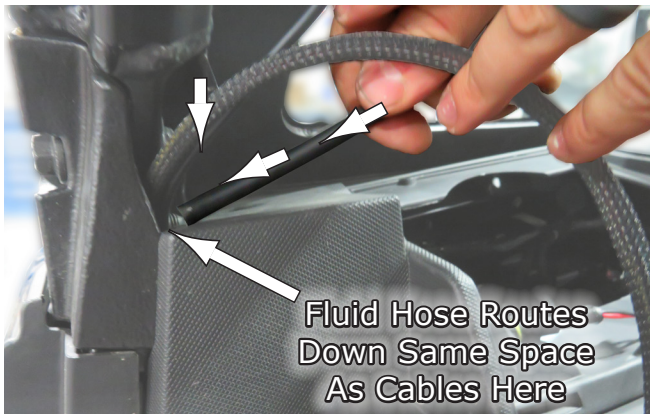


**Fig.37a**



**Fig.37b**

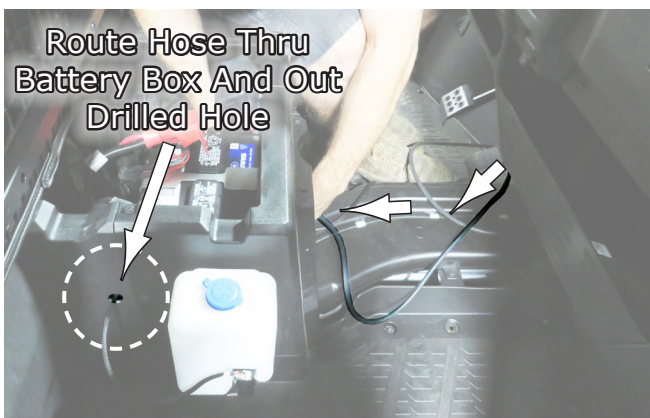
38. Now route the **Rubber Wiper Fluid Hose** down the same side with the cables and wires you just ran, see **Fig.38a**. Route it inside the dash area and down to the center console area and continue to route it on back to under the battery box as you did for the Fluid Pump Motor Cable, and route it out the drilled hole and attach to pump nipple at the bottom of the pump. See **Fig.38b-d**.



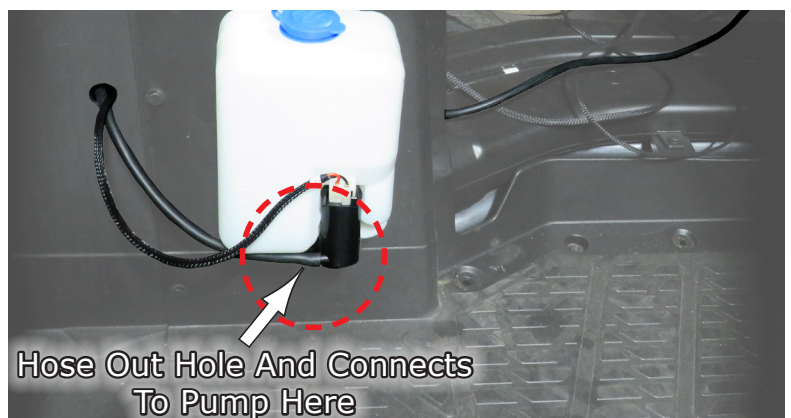
**Fig.38a**



**Fig.38b**



**Fig.38c**



**Fig.38d**

39. The next thing you will need is to hide the **Harness Cable** and **Fluid Hose** from the **Wiper Motor** to the vertical frame where you routed them down into the dash. First, locate your **Adhesive Backed Rubber D-Seal** in your kit and cut a piece **14-1/2"** in length as shown in **Fig.39a**. Then feed the harness cable and the **Wiper Fluid Hose** into the seal as shown in **Fig.39b**. Now remove the **Adhesive Backing Paper** from the bottom side and apply the seal with cables onto the vehicle in the space shown in **Fig.39c**, keeping it straight and neat as possible. **Fig.39d** shows this section installed, ready for the next section.



Fig.39a



Fig.39b

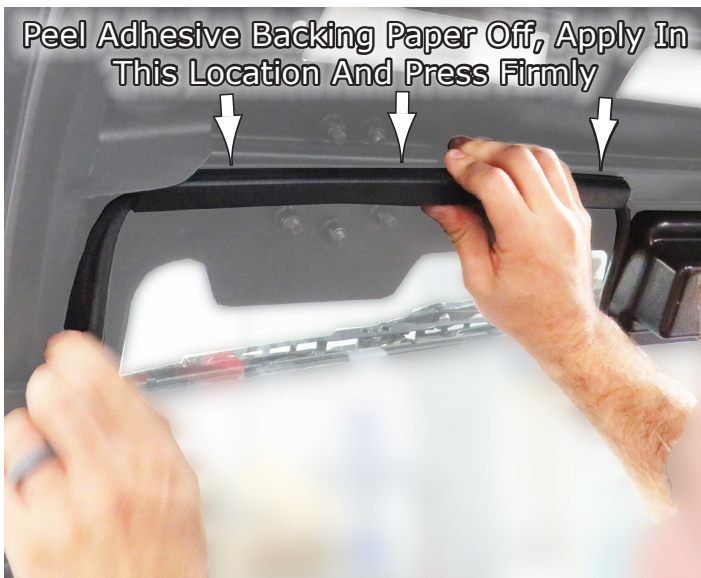


Fig.39c



Fig.39d

Next you will cut another D-Seal Section for the Vertical Frame in the next steps.

40. Now you will cut another piece of the **D-Seal** at **13-1/4" in length**. This is to hide the hose and cables going down into the dash from the vertical frame. So start feeding the cables and hose into the seal as you did before as shown in **Fig.40a**. After all is inside the seal, then remove the **Adhesive Backing Paper**, **Fig.40b**, and apply the seal in the location shown in **Fig.40c**. **Fig.40d** shows more detail of the items leaving each end of the seal.

**NOTE:** You may need to pull the Actuator Cable out the top a little bit in order for it to extend when opening the Windshield. Just keep this in mind as you work. See **Fig.40d**.



**Fig.40a**



**Fig.40b**



**Fig.40c**



**Fig.40d**



41. Now move to the **Passenger's Side** and connect the **Actuator Connector** plug to the connector you routed over to that side previously as shown in **Fig.41a**, then route the cable back down the space you brought it up thru, back inside the dash area, **Fig.41b**. Then take another **13-1/4" Long Piece** of the **D-Seal** and insert the **Actuator Cable** inside of it like you did on the Driver's side. Then Peel the **Adhesive Paper Backing** off, **Fig.41c**, and place on the vertical frame as shown in **Fig.41d**. The same locations as the Driver's side.



Fig.41a



Fig.41b



Fig.41c



Fig.41d

After you have fixed the D-Seals to the vehicle, you may want to Zip-Tie the Cable/Hoses to the frame to keep them from moving or catching on other items. Recheck all Screws/Bolts to make sure all is secure. Then replace any other items removed during the install, and try out your new system.



**Liability Statement**

SuperATV's® products are designed to best fit user's ATV/UTV under stock conditions. Adding, modifying, or fabricating any factory or aftermarket parts will void any warranty provided by SuperATV® and is not recommended. SuperATV's® products could interfere with other aftermarket accessories. If user has aftermarket products on machine, contact SuperATV® to verify that they will work together.

Although SuperATV® has thousands of satisfied customers, user should be aware that installing lift kits, long travel, or suspension kits, tires, etc. will change the ride of machine and may increase maintenance and part wear. Operating any off-road machine while, or after, consuming alcohol and/or drugs increases risk of bodily harm or death. No warranty or representation is made as to this product's ability to protect user from severe injury or death. SuperATV® urges operators and occupants to wear a helmet and appropriate riding gear at all times.

By purchasing and installing SuperATV® products, user agrees that should damages occur, SuperATV® will not be held responsible for loss of time, use, labor fees, replacement parts, or freight charges. SuperATV®, nor any 3rd party, will not be held responsible for any direct, indirect, incidental, special, or consequential damages that result from any product purchased from SuperATV®. The total liability of seller to user for all damages, losses, and causes of action, if any, shall not exceed the total purchase price paid for the product that gave rise to the claim.

SuperATV® will warranty only parts provided by SuperATV®. Any damage or problems with OEM housings, bearings, seals, or other manufacturers' products will not be covered by SuperATV®. SuperATV® parts and products are not warranted if item was not installed properly, misused, or modified.

Installing, adding, modifying, or fabricating any factory or aftermarket product to your ATV/UTV may violate certain local, state, and federal laws. Be advised that laws vary depending on town, city, county, state, etc. Use of certain products on public streets, roads, or highways may be in violation law. The Buyer is solely and exclusively legally and personally responsible for any violation of the law by the installation or use of the product. You must abide by all local, state, and federal laws, including but not limited to vehicle safety, traffic laws, and ordinances. It is your responsibility to know the laws and how they apply to you.

The Buyer is responsible to fully understand the capability and limitations of his/her vehicle according to manufacturer specifications, warnings and instructions and agrees to hold SuperATV® harmless from any damage resulting from failure to adhere to such specifications, warnings and/ or instructions. The Buyer is also responsible to obey all applicable federal, state, and local laws and ordinances when operating his/her vehicle while using this product, and the Buyer agrees to hold SuperATV® harmless from any violation thereof.

If you have any problems/questions on this kit, contact us by email at [superatv.com](mailto:sales@superatv.com).

**Need help with your installation?**



[sales@superatv.com](mailto:sales@superatv.com)



[www.superatv.com](http://www.superatv.com)



1-855-743-3427



8:00am - 9:00pm EST M-Th  
8:00am - 7:00pm EST Friday  
9:00am - 2:00pm EST Saturday

*Thank You  
For Choosing*



**Like SuperATV on Facebook to keep up to date on new products!**