



**DOWNLOAD COLOUR
INSTALL MANUALS AT
www.bddiesel.com**



BD 4.8L, 5.3L, 6.0L, and 6.2L GMC/Chevy LS Exhaust Manifold Kit

1041400	Exhaust Manifold Pair
1041401	Passenger Side Exhaust Manifold
1041402	Driver Side Exhaust Manifold



PLEASE READ ALL INSTRUCTIONS BEFORE INSTALLATION

See back of install manual for vehicle fitment table

Table of Contents

Table of Contents.....	2
Kit Contents	2
Introduction	4
Drivers Side Manifold Removal.....	4
Passenger Side Manifold Removal	6
Drivers Side Manifold Installation	8
Passenger Side Manifold Installation	11
Vehicle Fitment Table	14

Kit Contents

1041400 (Manifold Pair)	
1401401	1401402
	
Passenger Side Manifold Qty: 1	Driver Side Manifold Qty: 1

1401403	1403009	1401404
		
Dipstick Tube Spacer Qty: 1	Manifold Spacer Qty: 12	Exhaust Manifold Flange Gasket Qty: 2

1401405	1401406	FK-1041400
		
Manifold to Pipe Ring Gasket Qty: 1	Manifold to Pipe Cone Gasket Qty: 1	Hardware kit Qty: 2

1401401 (Passenger Side Kit)	
1401401	1401404
	
Passenger Side Manifold	Exhaust Manifold Flange Gasket
Qty: 1	Qty: 1

1401405	1401403	1403009	FK-1041400
			
Manifold to Pipe Cone Gasket	Dipstick Tube Spacer	Manifold Spacer	Hardware kit
Qty: 1	Qty: 1	Qty: 6	Qty: 1

1401402 (Driver Side Kit)	
1401402	1401404
	
Driver Side Manifold	Exhaust Manifold Flange Gasket
Qty: 1	Qty: 1

1401406	FK-1041400	1403009
		
Manifold to Pipe Ring Gasket	Hardware kit	Manifold Spacer
Qty: 1	Qty: 1	Qty: 6

FK-1041400 (Fastener Kit)				
				
Stud; M10-1.5x35	Nut; M10-1.5	Bolt; M8-1.25x45	Bolt; M10-1.5x30	Bolt; M6-1.0x10
Qty: 3	Qty: 3	Qty: 6	Qty: 1	Qty: 6

Introduction

BD's exhaust manifold kit for LS pick-up applications and others (listed at end of manual) replaces the problematic OEM manifold. The BD Manifold has a uniform casting thickness, and features longer bolts and spacers to reduce the stress on the bolts, preventing them from breaking. The kits include all the required hardware and gaskets for manifold installation.

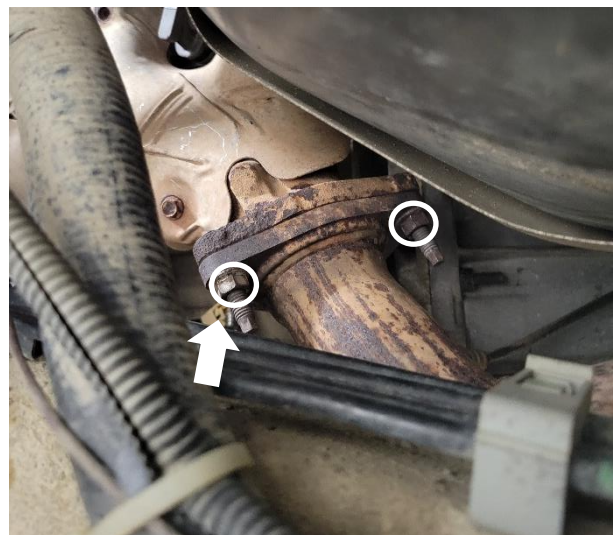
Drivers Side Manifold Removal

Removal of wheels is required to access exhaust manifold

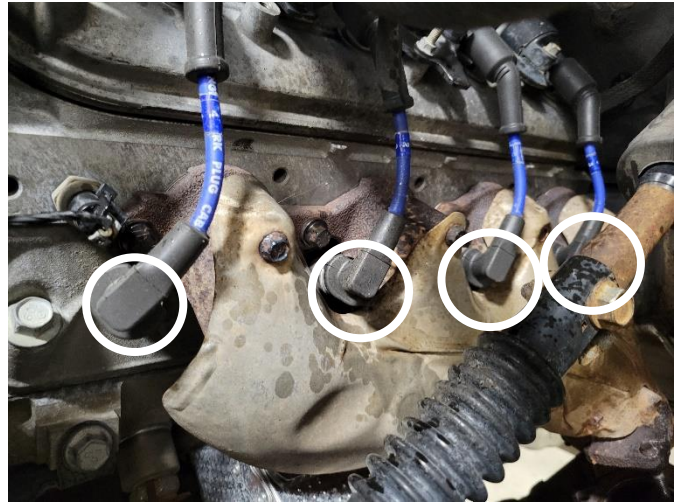
Remove the wheelhouse plastic liner clips and bolts to then remove the inner fender liner



Remove the **3 x 15mm** nuts that connect the catalytic converter to the exhaust manifold

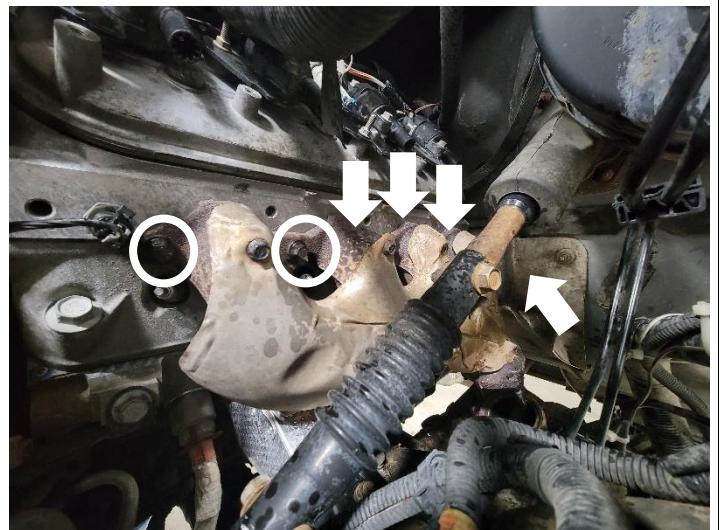


Remove the 4 spark plug wires from the spark plugs

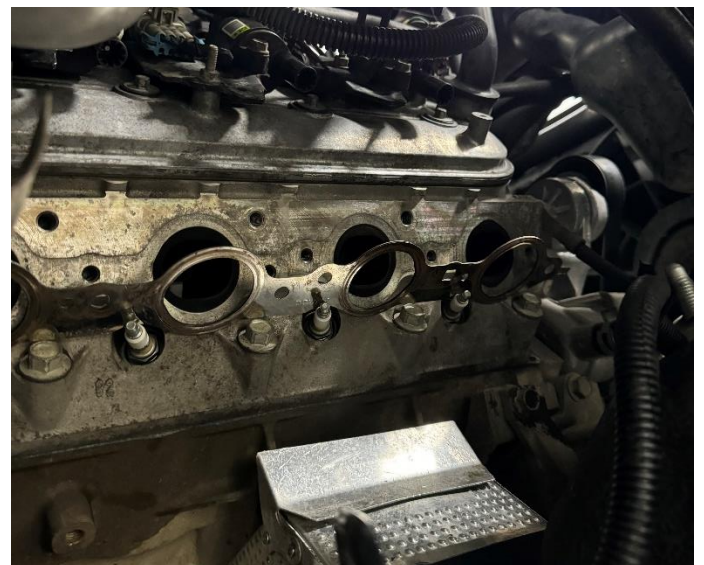


Remove the **6 x 10mm** bolts that hold on the exhaust manifold

Note: Hold the manifold when removing last nut so that it doesn't drop on spark plugs



Remove old exhaust manifold gasket



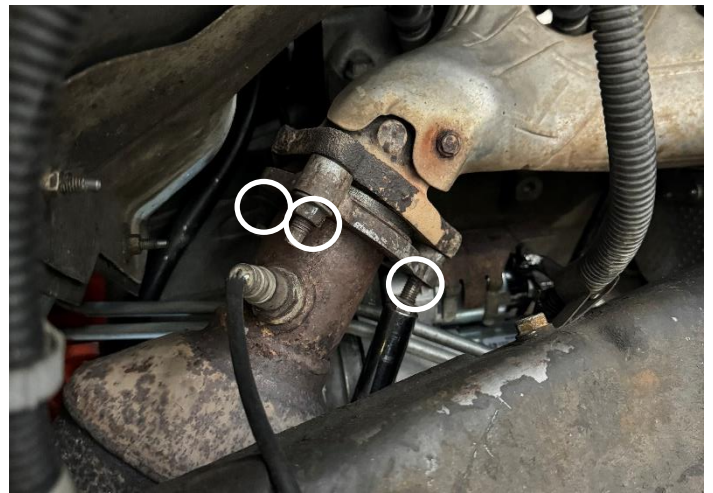
Passenger Side Manifold Removal

Removal of wheels is required to access exhaust manifold

Remove the wheelhouse plastic liner clips and bolts to then remove the inner fender liner



Remove the **3 x 15mm** nuts that connect the catalytic converter to the exhaust manifold



Remove the 4 spark plug wires from the spark plugs

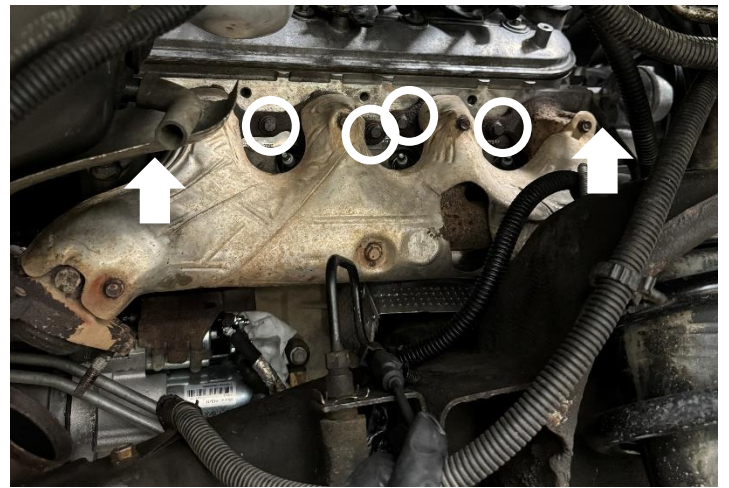


Remove oil dipstick tube bolt and dipstick



Remove the **6 x 10mm** bolts that hold on the exhaust manifold

Note: Hold the manifold when removing last nut so that it doesn't drop on spark plugs



Remove old exhaust manifold gasket



Drivers Side Manifold Installation

Thread in the three **M10** studs into the exhaust manifold with the shorter threaded end going into the manifold

Note: Use double nut method to tighten studs



Thread in **5 x 10mm bolts** to attach the heat shield to the manifold and tighten each bolt to **80 in-lb (9Nm)**



Install new gasket in catalytic converter groove

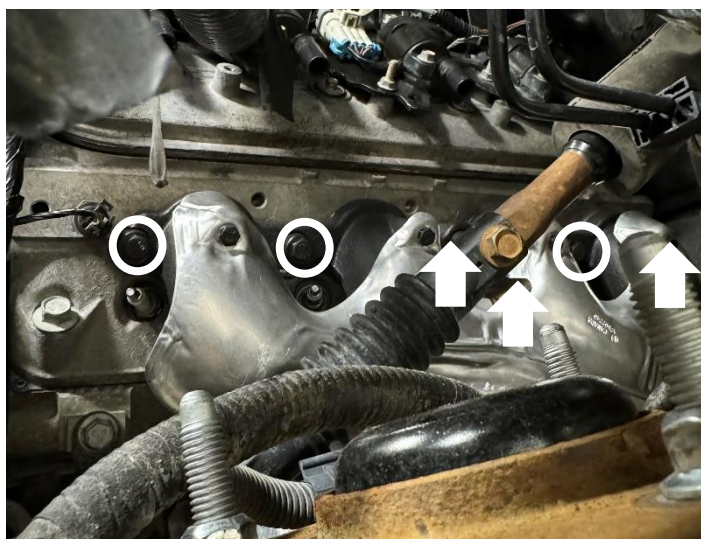


Clean any gasket residue that is left over on the cylinder head



Slide in manifold gasket between cylinder head and manifold, install and hand-tighten the manifold (1401402) using the provided spacer (1403009) and manifold bolts

Note: It is easiest to tighten the farthest back bolt from above



Tighten down all **M8** manifold bolts in a 2-step sequence

Stage 1: Tighten to **11 ft-lb (15Nm)** in the order shown

Stage 2: Tighten to **15 ft-lb (20Nm)** in the order shown



Push up exhaust to align the studs through the holes and tighten down the **3 x 15mm nuts** connecting the manifold to the exhaust to **37 ft-lb (50Nm)**



Install all clips and bolts that hold on the inner wheelhouse fender liner



Passenger Side Manifold Installation

Thread in the three **M10** studs into the exhaust manifold with the shorter threaded end going into the manifold

Note: Use double nut method to tighten studs



Thread in **6 x 10mm bolts** to attach the heat shield to the manifold and tighten each bolt to **80 in-lb (9Nm)**



Clean any gasket residue that is left over on the cylinder head



Install new gasket in collector where the manifold connects to the exhaust



Slide in manifold gasket between cylinder head and manifold, install and hand-tighten the manifold (**1401401**) using the provided spacer (**1403009**) and manifold **M8** manifold bolts



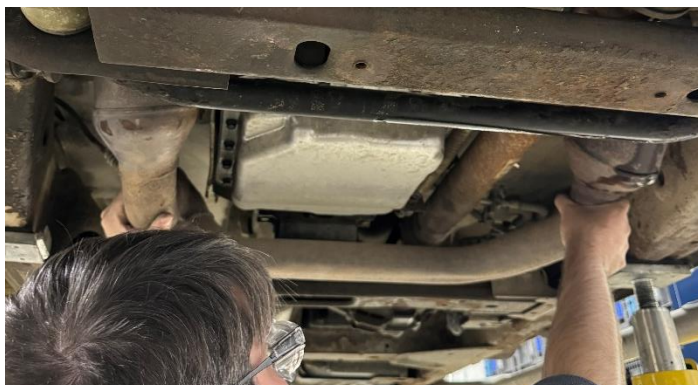
Tighten down all **M8** manifold bolts in a 2-step sequence

Stage 1: Tighten to **11 ft-lb (15Nm)** in the order shown

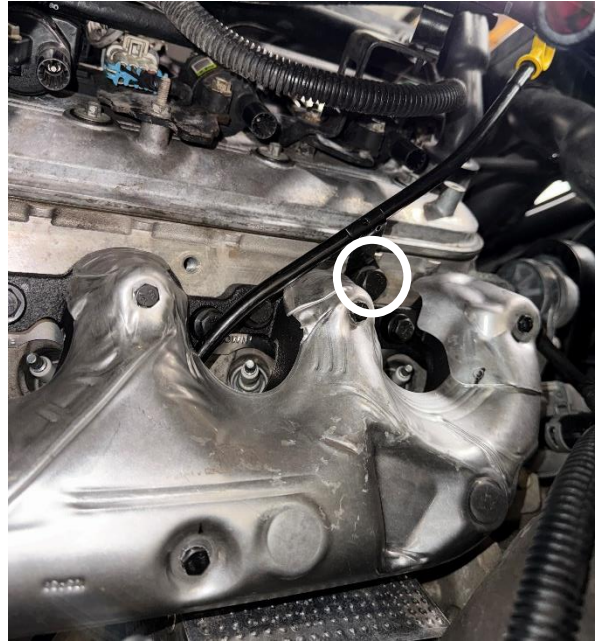
Stage 2: Tighten to **15 ft-lb (20Nm)** in the order shown



Push up exhaust to align the studs through the holes and tighten down the **3 x 15mm nuts** connecting the manifold to the exhaust to **37 ft-lb (50Nm)**



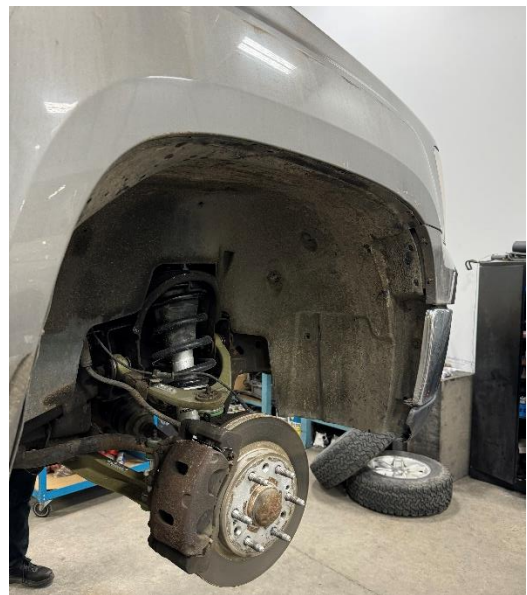
Slide oil dipstick tube Install the manifold dipstick tube spacer (1401403) and M10 bolt to secure oil dipstick in place



Install the 4 spark plug wires onto the spark plugs



Line up wheelhouse liner and install the 5 Philips head screws and (9 GMC, 8 Chevy) plastic clips



Vehicle Fitment Table

Vehicle Model	Application Year										
	2003	2004	2005	2006	2007	2008	2009	2010	2011	2012	2013
CADILLAC											
<i>Escalade (5.3)</i>	✓	✓	✓								
<i>Escalade (6.0)</i>	✓	✓	✓	✓			✓	✓	✓	✓	✓
<i>Escalade (6.2)</i>					✓	✓	✓	✓	✓	✓	✓
<i>Escalade ESV (6.0)</i>	✓	✓	✓	✓							
<i>Escalade ESV (6.2)</i>					✓	✓	✓	✓	✓	✓	✓
<i>Escalade EXT (6.0)</i>	✓	✓	✓	✓							
<i>Escalade EXT (6.2)</i>					✓	✓	✓	✓	✓	✓	✓
CHEVROLET											
<i>Avalanche (5.3)</i>					✓	✓	✓	✓	✓	✓	✓
<i>Avalanche (6.0)</i>					✓	✓	✓				
<i>Avalanche 1500 (5.3)</i>	✓	✓	✓	✓							
<i>Express 1500 (5.3)</i>	✓	✓	✓	✓	✓	✓	✓	✓	✓	✓	✓
<i>Express 2500 (4.8)</i>				✓	✓	✓	✓	✓	✓	✓	✓
<i>Express 2500 (5.3)</i>	✓	✓	✓								
<i>Express 2500 (6.0)</i>	✓	✓	✓	✓	✓	✓	✓	✓	✓	✓	✓
<i>Express 3500 (4.8)</i>	✓	✓	✓	✓	✓	✓	✓	✓	✓	✓	✓
<i>Express 2500 (6.0)</i>	✓	✓	✓	✓	✓	✓	✓	✓	✓	✓	✓
<i>Silverado 1500 (4.8)</i>	✓	✓	✓	✓	✓	✓	✓	✓	✓	✓	✓
<i>Silverado 1500 (5.3)</i>	✓	✓	✓	✓	✓	✓	✓	✓	✓	✓	✓
<i>Silverado 1500 (6.0)</i>	✓	✓	✓	✓	✓	✓	✓	✓	✓	✓	✓
<i>Silverado 1500 (6.2)</i>							✓	✓	✓	✓	✓
<i>Silverado 1500 Classic (4.8)</i>					✓						
<i>Silverado 1500 Classic (5.3)</i>					✓						
<i>Silverado 1500 Classic (6.0)</i>					✓						
<i>Silverado 1500 HD (6.0)</i>	✓	✓	✓								
<i>Silverado 1500 HD Classic (6.0)</i>					✓						
<i>Silverado 2500 (6.0)</i>	✓	✓									
<i>Silverado 2500 HD (6.0)</i>	✓	✓	✓	✓	✓	✓	✓	✓	✓	✓	✓
<i>Silverado 2500 HD Classic (6.0)</i>					✓						
<i>Silverado 3500 (6.0)</i>	✓	✓	✓	✓							
<i>Silverado 3500 Classic (6.0)</i>					✓						
<i>Silverado 3500 HD (6.0)</i>					✓	✓	✓	✓	✓	✓	✓
<i>Suburban 1500 (5.3)</i>	✓	✓	✓	✓	✓	✓	✓	✓	✓	✓	✓
<i>Suburban 1500 (6.0)</i>				✓	✓	✓	✓				

	2003	2004	2005	2006	2007	2008	2009	2010	2011	2012	2013
<i>Suburban 2500 (6.0)</i>	✓	✓	✓	✓	✓	✓	✓	✓	✓	✓	✓
<i>Tahoe (4.8)</i>	✓	✓	✓	✓	✓	✓	✓				
<i>Tahoe (5.3)</i>	✓	✓	✓	✓	✓	✓	✓	✓	✓	✓	✓
<i>Tahoe (6.0)</i>						✓	✓	✓	✓	✓	✓
<i>Tahoe (6.2)</i>						✓	✓				
GMC											
<i>Savana 1500 (5.3)</i>	✓	✓	✓	✓	✓	✓	✓	✓	✓	✓	✓
<i>Savana 2500 (4.8)</i>	✓	✓	✓	✓	✓	✓	✓	✓	✓	✓	✓
<i>Savana 2500 (5.3)</i>	✓	✓	✓								
<i>Savana 2500 (6.0)</i>	✓	✓	✓	✓	✓	✓	✓	✓	✓	✓	✓
<i>Savana 3500 (4.8)</i>	✓	✓	✓	✓	✓	✓	✓	✓	✓	✓	✓
<i>Savana 3500 (6.0)</i>	✓	✓	✓	✓	✓	✓	✓	✓	✓	✓	✓
<i>Sierra 1500 (4.8)</i>	✓	✓	✓	✓	✓	✓	✓	✓	✓	✓	✓
<i>Sierra 1500 (5.3)</i>	✓	✓	✓	✓	✓	✓	✓	✓	✓	✓	✓
<i>Sierra 1500 (6.0)</i>	✓	✓		✓	✓	✓	✓	✓	✓	✓	✓
<i>Sierra 1500 (6.2)</i>					✓	✓	✓	✓	✓	✓	✓
<i>Sierra 1500 Classic (4.8, 5.3, 6.0)</i>					✓						
<i>Sierra 1500 HD (6.0)</i>	✓	✓	✓								
<i>Sierra 1500 HD Classic (6.0)</i>					✓						
<i>Sierra 2500 (6.0)</i>	✓	✓									
<i>Sierra 2500 HD (6.0)</i>	✓	✓	✓	✓	✓	✓	✓	✓	✓	✓	✓
<i>Sierra 2500 HD Classic (6.0)</i>					✓						
<i>Sierra 3500 (6.0)</i>	✓	✓	✓	✓							
<i>Sierra 3500 Classic (6.0)</i>					✓						
<i>Sierra 3500 HD (6.0)</i>					✓	✓	✓	✓	✓	✓	✓
<i>Yukon (4.8)</i>	✓	✓	✓	✓	✓	✓	✓				
<i>Yukon (5.3)</i>	✓	✓	✓	✓	✓	✓	✓	✓	✓	✓	✓
<i>Yukon (6.0)</i>	✓	✓	✓	✓		✓	✓	✓	✓	✓	✓
<i>Yukon (6.2)</i>					✓	✓	✓	✓	✓	✓	✓
<i>Yukon XL 1500 (5.3)</i>	✓	✓	✓	✓	✓	✓	✓	✓	✓	✓	✓
<i>Yukon XL 1500 (6.0)</i>	✓	✓	✓	✓	✓	✓	✓				
<i>Yukon XL 1500 (6.2)</i>					✓	✓	✓	✓	✓	✓	✓
<i>Yukon XL 2500 (6.0)</i>	✓	✓	✓	✓	✓	✓	✓	✓	✓	✓	✓
HUMMER											
<i>H2 (6.0)</i>	✓	✓	✓	✓	✓						
<i>H2 (6.2)</i>						✓	✓				