

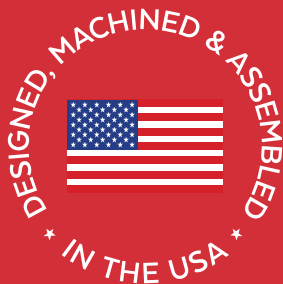


Caterpillar Drop-In Series Air Separation System
INSTALLATION MANUAL

DIFSCAT1001



**Caterpillar
3406E, C10, C11, C12,
C13, C15, C16, and C18
with
1R-0749 and 1R-0750
Fuel Filters**





www.fassride.com

(866) 769.3747

Thank you for choosing FASS, from Diesel Performance Products, Inc.

FASS specializes in building extremely high-quality fuel products. We have earned an unsurpassed reputation for excellence in our industry by using only the highest-quality American-made components. In order to support our American workers and our American economy, more than 98+ percent of our products are manufactured completely in the United States.

Of course, that dedication to excellence comes at a price, but it is important to remember that price does not dictate quality-quality dictates price! We will never compromise by using cheaper, foreign-made components, like so many of our competitors do.

Customer satisfaction is our top priority and we strive always to provide outstanding customer service. Our Research and Development department, in conjunction with our Dealer Support Department, continually searches for ways to improve quality, expand our product line, and provide superb support. Our exclusive ViP Network ensures that customers receive the proper products and support at the local level. The extended lifetime warranty is only available on products purchased from the network. There is no warranty on products not purchased outside the network.

IMPORTANT:

In order to qualify for the lifetime extended warranty, your product registration form and proof of purchase from an authorized dealer must be submitted to FASS Fuel Systems within 30 days of purchase. Failure to comply will void the warranty. We have the right to deny any warranty believed to be false, altered or purchased through an unauthorized or terminated dealer. A current list of authorized dealers can be found on our website, FASSRide.com.

The complete conditions of the Limitation of Warranty can be found in the back of this manual, and FASSRide.com.

**For more information,
contact Technical Support: Diesel
Performance Products, Inc. 16234
State Hwy O. Marthasville, MO
63357
636-433-5410**



WARNING!

This product has NO WARRANTY unless:

1. It has been purchased from an **Authorized or **ViP FASS Dealer**. If in doubt, check www.FASSRide.com.**

2. It is registered within thirty (30) days of purchase.

Other conditions may apply. Please see full warranty information.

***NOTE:* Warranty is **void** if product was purchased below FASS website advertised pricing.**

ATTENTION!

Before you begin installation

Register for your Warranty ONLINE at

<https://www.fassride.com/register-a-warranty/>

No online access, call our TECH Support at

1-866-769-3747

FOLLOW THESE STEPS TO ENSURE A SIMPLE, CORRECT INSTALLATION OF YOUR NEW Drop-In Series FASS

- 1** Be sure the serial number on this installation manual matches that on the outside of the box.
- 2** Pay close attention to ALL WARNINGS
- 3** Read all instructions before starting installation of this product.
- 4** Inventory the package components. Notify the place of purchase immediately of any parts missing or damaged.
- 5** The installation recommendations contained herein are guidelines. Use good judgment and take into consideration your vehicles' accessories.
- 6** For best results in accuracy and efficiency (due to training, communication, and our relationship with our dealer network), we recommend a VIP FASS dealer for the installation. They are prepared to install the FASS fuel pumps with the most efficiency. If a situation or problem arises during the installation, the dealer is prepared to handle it. Diesel Performance Products, Inc. is not responsible for any installation mistakes.
- 7** If you have any questions or concerns that cannot be addressed with your dealer, email or call FASS.

**If any installation procedure is uncertain, contact FASS technical support.
Call customer service at 636-433-5410,
or send us an e-mail: techsupport@FASSride.com
with the following information:**

Your name, address and daytime phone number
Model **DIFSCAT1001**
Serial Number
Last 6 digits of vehicles' VIN

Date of purchase
Nature of Your Concern
Serial number



INSTALLATION MANUAL

DIFSCAT1001

(Installation Videos are available at
www.fassride.com)

- 1. Read all instructions before starting installation of this product!**
- 2. Installing the improper FASS Pump can cause severe engine damage.**
- 3. Secure vehicle from ROLLING!**
- 4. Consult vehicle's manufacturers' instructions concerning the electrical system before attempting any electrical connections.**
- 5. Be sure that the serial # on the FASS matches that of the outside of the box.**
- 6. Flush and clean all brass fittings and fuel line from debris.**
- 7. Wear safety glasses when operating power tools such as drills and grinders or when using a punch or chisel.**
- 8. Properly secure lines to prevent chaffing.**

CONTENTS

NOTE: Owner's Manual available for download on our website, www.FASSride.com



MP-9095



**SERIAL NUMBER
MUST BE INSTALLED AFTER FASS
INSTALLATION IS COMPLETE**



FL-1010 x øè



OR-332

MOUNTING PACKAGE CONTENTS



PL-2001



GPF-6060



16488



PL-1011



APF-4001



PS-1004



1901-312-5939-P

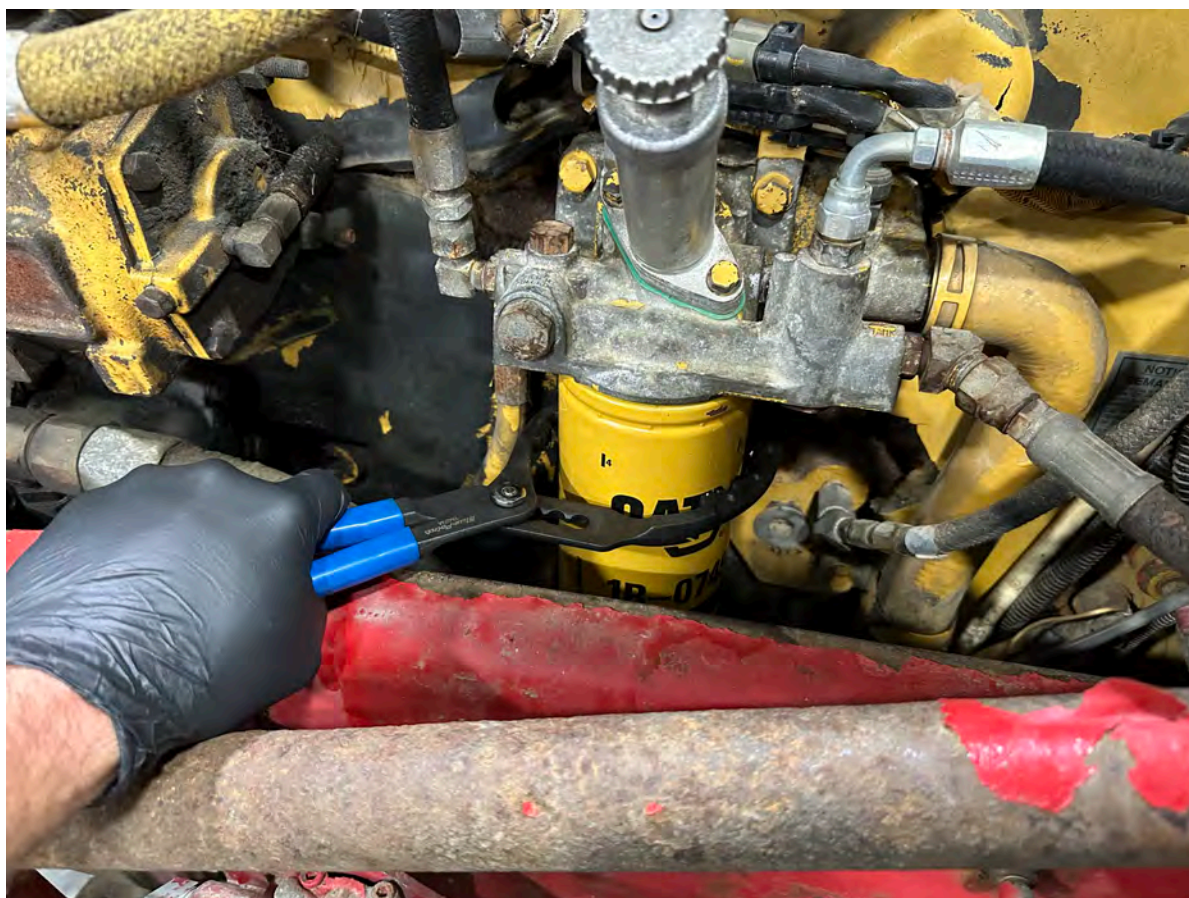


**AFTER YOU COMPLETE THE
INSTALLATION, YOU MUST
INSTALL THE FASS SERIAL
NUMBER. FAILURE TO INSTALL
THE SERIAL NUMBER MAY VOID
THE WARRANTY!**

A.Ó Verify that you have the correct FASS return fitting (16488 or GPF-6060) by disconnecting the fuel return line and thread the FASS return fitting in place. Once you have verified that you have the correct fitting, the return fitting can be removed and you can proceed with the installation.



B. Place a drain pan under the OEM engine mounted filter and remove the filter.



C. Install OR-332 into the O-Ring groove of the FASS Air Separation Base then apply a thin layer of grease to the O-Ring.

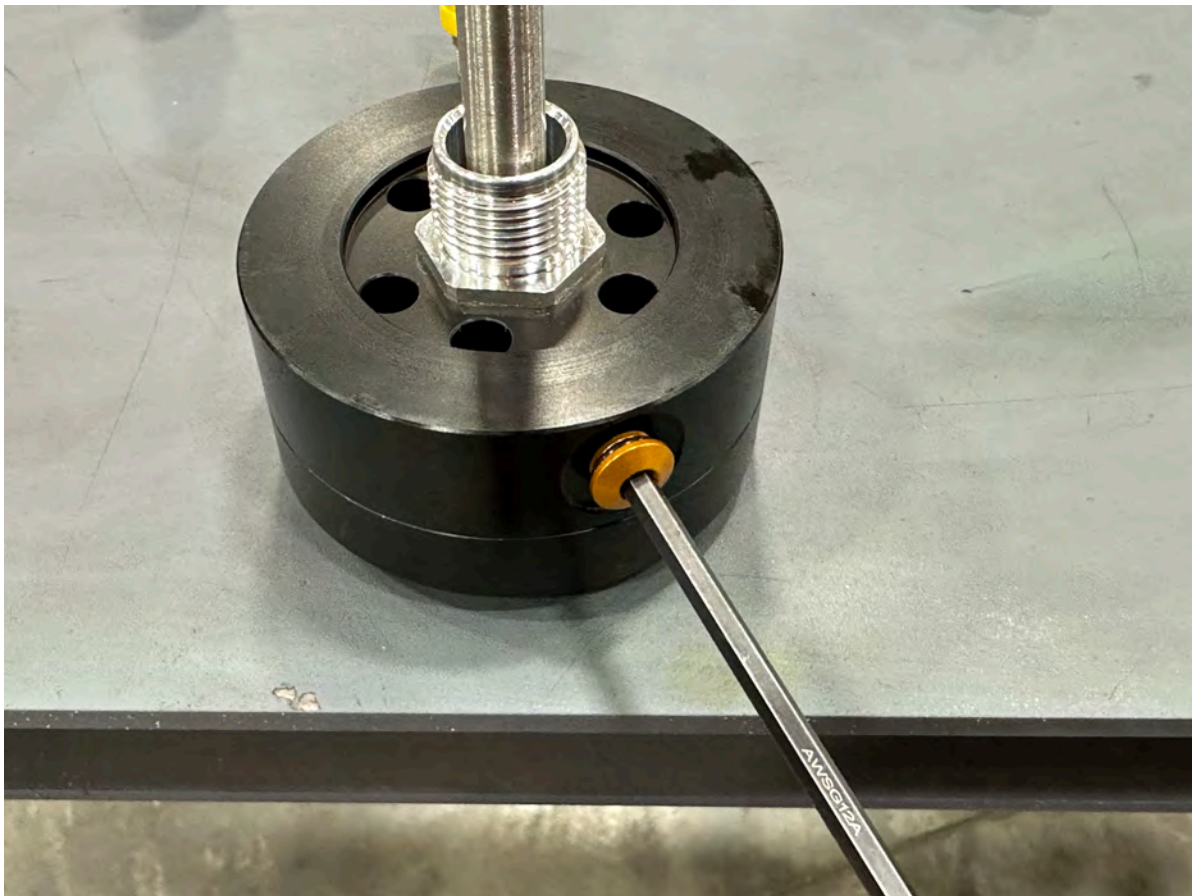


D. Thread the FASS Air Separation Base in place of the OEM fuel filter and tighten. Once the filter base is tight, mark the air separation port that is positioned in the best location to tie in with the engine return. Now remove the FASS from the filter housing.



E. Install an ORB-PLUG-4 into the two open ports that you DID NOT MARK. Tighten the plugs accordingly.

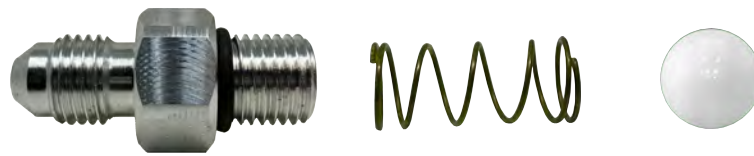
NOTE: BE SURE TO INSTALL THE SUPPLIED O-RING ON EACH ORB-PLUG-4!



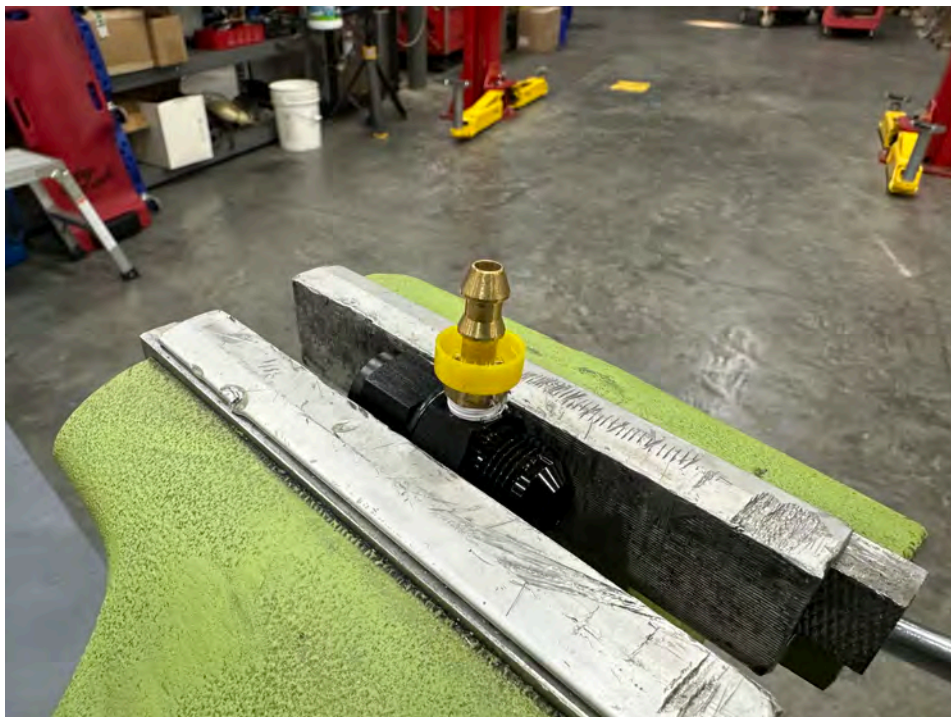
F. Install the FASS onto the OEM fuel filter housing and tighten using an oil filter strap wrench. You will want it tighter than the fuel filter so it does not loosen during filter service intervals.



G. Install the 5/16" check ball, PS-1004, and APF-4001 into the filter base and tighten to 110in/lbs. A small amount of grease can be used to hold the check ball and spring in place as needed.



H. Using thread tape, install PL-1011 into the return fitting selected in the first step. Tighten PL-1011 accordingly.



- I. Install the FASS return fitting into the OEM fuel return line and tighten accordingly.



J. Using grease, press PL-2001 into FL-1010.



K. Loosely install PL-2001 onto the FASS return port, do not tighten at this time.



- L. Route FL-1010 to the FASS return fitting, trim, then press onto PL-1011 using grease.



M. Gently tighten PL-2001.



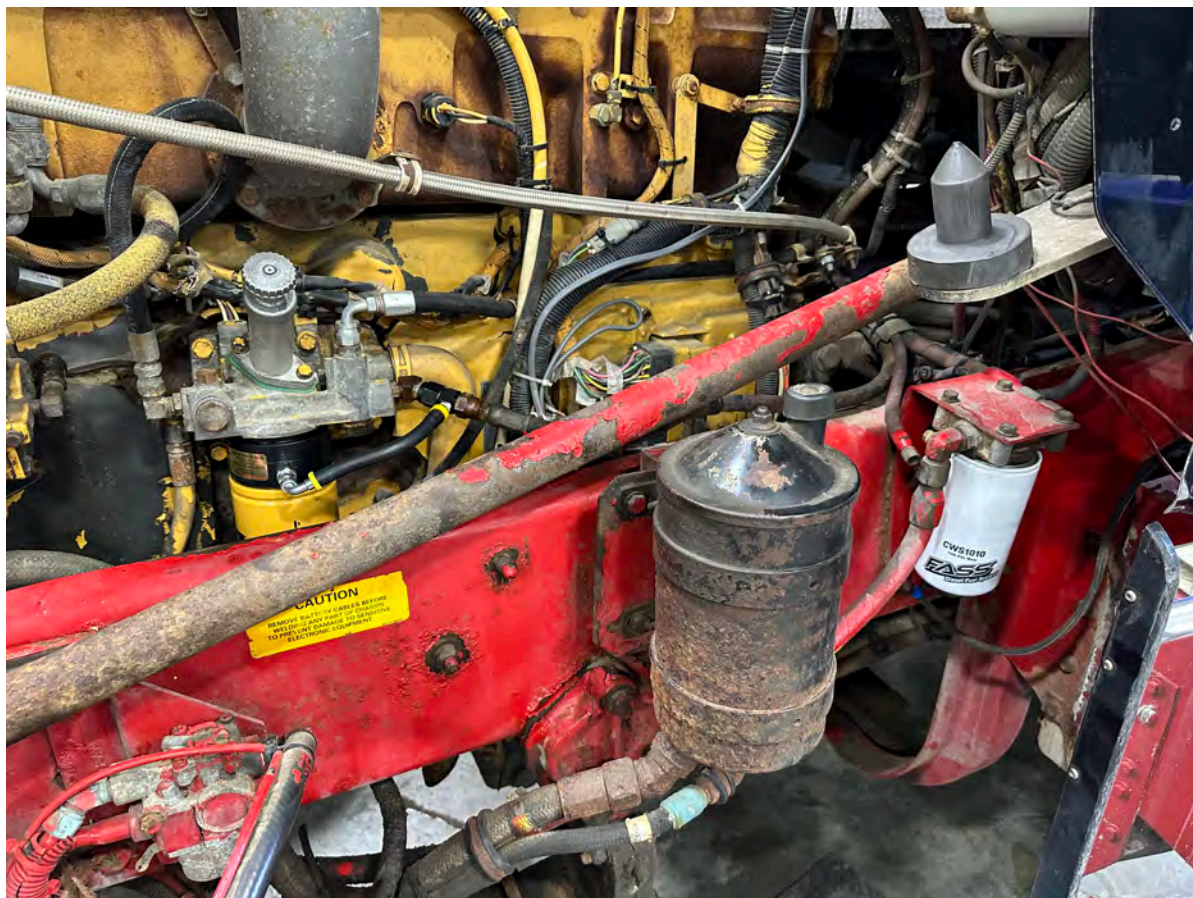
N. Install a new fuel filter onto the FASS Air Separation Chamber.



O. Using rubbing alcohol or brake clean, clean the filter base free of any grease or diesel fuel. Install the FASS serial number in a visible location on the FASS Air Separation Chamber.



P. Prime the fuel system then start the engine and check for leaks.





www.fassride.com

(866) 769.3747

LIMITATION OF LIFETIME WARRANTY

Disclaimer: To help insure you receive the proper system and customer support at the local level, FASS has a VIP and Authorized Dealer network representing FASS products. This is one reason you must purchase through a dealer to comply with our warranty policies. If you do not, there is no warranty! We recommend you go to www.FASSride.com, click "Find a Dealer", put in their ZIP code, select the type of dealer, and see if the company you purchased from is listed. If they are not, put their phone number in the field below the ZIP code field to see if they are listed. Below these two fields is a list of "Terminated/Unauthorized" dealers. You may want to review this list. If the company is not listed or is on the "Terminated/Unauthorized" list, we suggest you return the product immediately to that dealer and call FASS. We'll recommend you to the nearest dealer.

Diesel Performance Products, Inc. (hereafter "SELLER") gives Limited Warranty as to description, quality, merchantability, fitness for any product's purpose, productiveness, or any other matter of SELLER'S product sold herewith. The SELLER shall be in no way responsible for the product's open use and service and the BUYER hereby waives all rights other than those expressly written herein. This Warranty shall not be extended or varied except by a written instrument signed by SELLER and BUYER.

When MANUFACTURER receives the "ORIGINAL" PRODUCT REGISTRATION form with a copy of the "BILL OF SALE/SALES RECEIPT" within 30 days of the sale, then the following applies! The Warranty will then and only then be validated to that of which typically accompanies your unit for your specific application from the date of sale or for recommended service life and limited solely to the original purchaser and/or vehicle and parts contained within the product's kit. This warranty does not cover normal wear on consumable items such as but not limited to filters, fuel line, wire harness & etc. The warranty does not cover seized gears due to lack of filtration. Warranty is voided if used with other than diesel fuel. Returned items will arrive prepaid to the place of purchase. Diesel Performance Products, Inc. will repair, without cost, any product found to be defective during the warranty period; parts only, or at its option, will replace such products in exchange for the product. Repair or replacements are warranted for the remainder of the original warranty period. All Warranty claims are subject to approval by Diesel Performance Products, Inc.

A Return Material Authorization (RMA) number must be obtained before any product is to be returned to Diesel Performance Products, Inc. for warranty consideration, repair or product return. Requests for product returns must be offset by an equal value order. Return parts must be completed and in resalable condition. No returns after 30 days.

Your Name, Address, and Phone Number's

Model and Serial Number (Not Motor Number) Example: Model HD Series, Serial: 00125966 VIN Number of Vehicle

Date of Purchase

Nature of Problem

RMA and Product Serial Number must be on all paperwork and correspondence. Failure to obtain the required information or paperwork will result in \$25.00/item penalty and delay or denial of any warranty claim.

Under no circumstances shall the SELLER and/or MANUFACTURER be liable for any labor charged or travel time incurred in diagnosis for defects, removal, or reinstallation of this product, or any other contingent expenses.

Under no circumstances shall the SELLER and/or MANUFACTURER be liable for any damage or expenses insured by reason of the use or sale of any such equipment. This warranty does not apply to products which Diesel Performance Products, Inc. has determined to have been misused or abused, improperly maintained by the user, or where the malfunction or defect can be attributed to the use of non-genuine Diesel Performance Products, Inc. parts.

IN THE EVENT THAT THE BUYER DOES NOT AGREE WITH THIS AGREEMENT: THE BUYER MAY PROMPTLY RETURN THIS PRODUCT, IN A NEW AND UNUSED CONDITION, WITH A DATED PROOF OF PURCHASE, TO THE PLACE OF PURCHASE WITHIN THIRTY (30) DAYS FROM DATE OF PURCHASE FOR A FULL REFUND LESS SHIPPING.

THE INSTALLATION OF THIS PRODUCT INDICATES THAT THE BUYER HAS READ AND UNDERSTANDS THIS AGREEMENT AND ACCEPTS ITS TERMS AND CONDITIONS.