

No Limit Fabrication 6.7 Power Stroke Intercooler Install Instructions

VIDEO INSTRUCTIONS

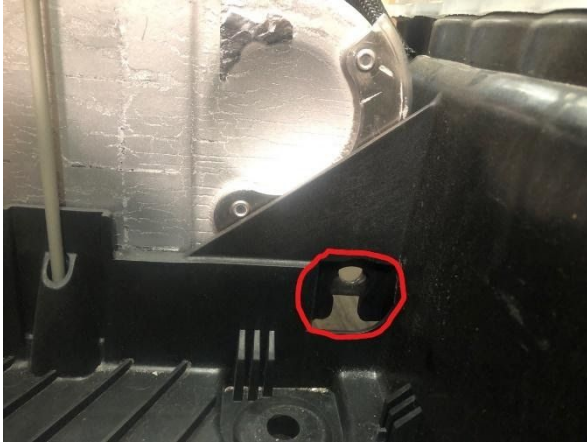
- 1) First you are going to want to start by draining the radiators one is located on the passenger side bumper the other is on the driver side. Sometimes on the 2011-2016 trucks you can go through the front of the bumper or you can pull the passenger side fog light. Or you can get to it from inside the bumper on all years. The Driver side radiator you will be able to get to it behind the bumper. You are only going to need to drain about 1.5-2 Gal of coolant out of each system.



- 2) While the coolant is draining you can start pulling the driver side battery and removing the hot and cold side boots from the factory intercooler.



- 3) Once you have the battery removed you can then remove the (2) 13mm bolts that mount the intercooler to the battery tray.



- 4) Then once the coolant has fully drained you can pull the Upper Radiator Hose and black quick connect fitting with the white squeeze tabs off the intercooler and you can pull the old intercooler out of the truck.



- 5) Once the intercooler is removed you can then begin modifying the coolant lines. On the 2011-2016 trucks you will have grey spring clamps and the 2017-2020 trucks will have a plastic crush ring



- 6) Start with the line that runs along the top of the radiator with the short 45* hose and remove the quick connect fitting. Then take the other quick connect fitting and follow the short hose back to the T and remove the spring or crush clamp and the hose from the T fitting.
- 7) Now install the provided silicone hose to the bottom outlet of the intercooler clock it towards the firewall and tighten the provided clamp. Once that is installed you can then drop in the intercooler make sure you use the rubber isolator from the back of the factory intercooler as well as the Rubber gromet and metal threaded tab for the bolts.

- 8) Once you have the No Limit Intercooler installed you can now hook up the hot and cold side intercooler pipes as well as the (2) 13mm mounting bolts. Then take the short 45* coolant line and connect it to the top port on the intercooler with one of the provided clamps. You can also connect the line that comes from the bottom of the intercooler to the plastic T with one of the provided clamps as well.



- 9) Now that the intercooler is installed and all the bolts and clamps are tight make sure you close the drain on the radiator. Then you can reinstall the battery and refill the secondary system on the passenger side fan shroud.