

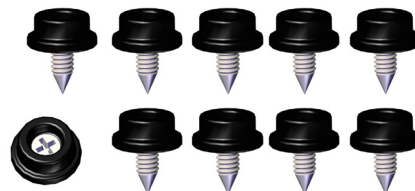


## INSTALLATION INSTRUCTIONS

**Grill Cover: GC-CA-DEF**

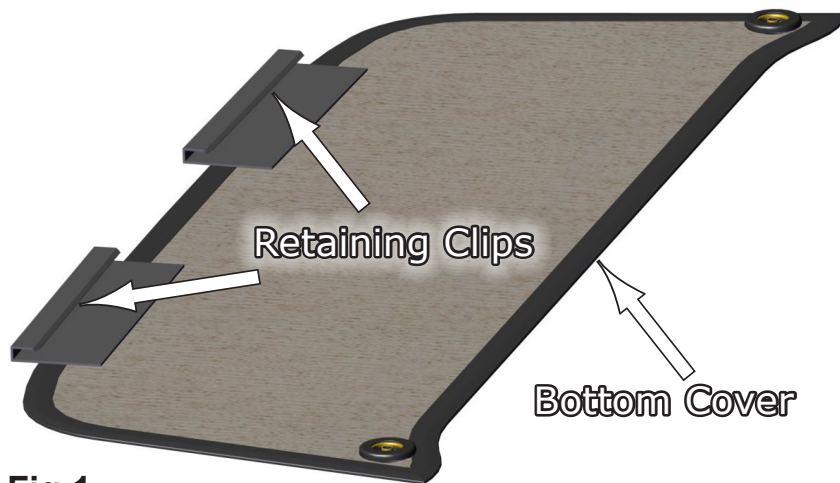


**Grill Cover  
(1pc)**



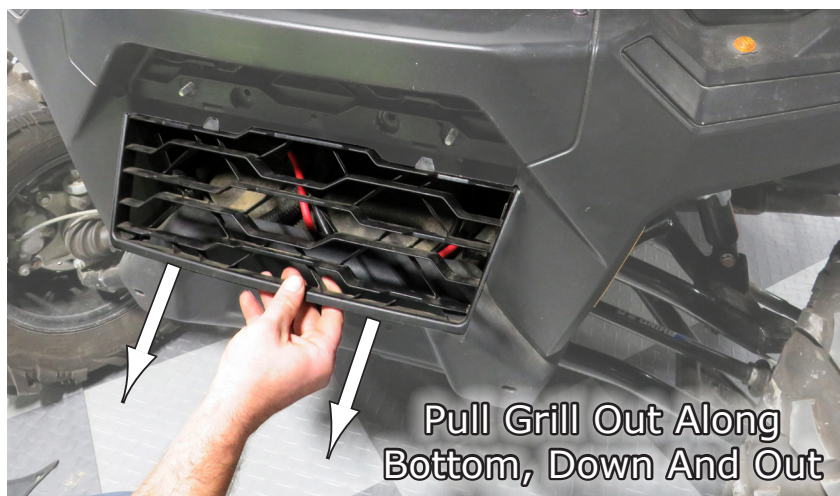
**Self Drilling Snaps  
(10pcs)**

1. There are Two pieces to the cover in your kit. The smaller one is the Lower Cover and the larger one is the Upper Cover. We will start the install with the Lower Cover first. As you'll see, there are two clips on the bottom edge of the Lower Cover. These will hook onto the grill. However, the grill will need to be removed first in the following steps. See clips in **Fig.1**.



**Fig.1**

2. Next, remove the grill by pulling it out from the bottom as shown in **Fig.2**. There are two spring clips along the bottom edge that keep it in place. You can pull them out with a sharp tug. Pull down and out to remove the grill. Two Tabs go in the upper slots that keep the top edge in place.



**Fig.2**

3. Now flip the grill upside down so the bottom is now facing you and hook the cover clips onto the bottom edge of the grill (now facing up) and center them side to side as best as you can. Be sure the cover is covering the **Front Side** of the grill when installing. See **Fig.3a-b**.



**Fig.3a**



**Fig.3b**

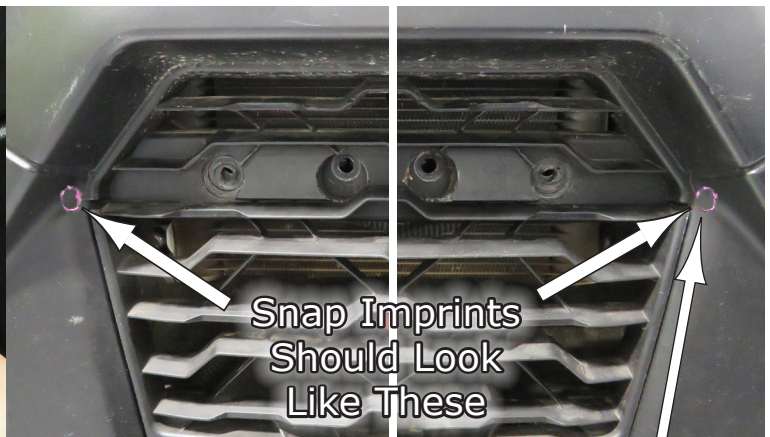
4. Now, reinstall the grill with the cover on it by feeding the top edge tabs into the slots and then push the bottom edge spring clips back into position as shown in **Fig.4a-b**.



**Fig.4a**

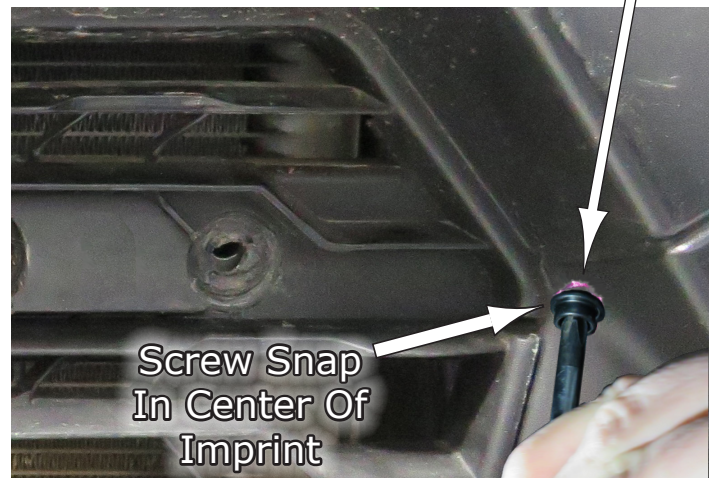
**Fig.4b**

5. Next you will be marking locations where to install the other halves of the snaps for the lower cover. There is one on each corner of the upper edge of the cover. To do this you will use a paint marker to paint the outer surface of the cover snap, then pulling upward stretching it tight and then pressing the snap tightly up against the panel to cause the paint to make an imprint of the snap onto the panel. See **Fig.5** below.



**Fig.5**

6. After the imprints are on the panel, you can now screw the other half of the snap into the center of your markings. Since these will self drill and screw into the panel, just find the center where you want to install the snap and screw it in place. See **Fig.6**.



**Fig.6**

7. Once the snaps are installed in place, now you can install the rest of the Upper Cover onto the new snaps as shown in **Fig.7**.



**Fig.7**



**Fig.8a**

8. Now that the Lower Cover is installed, get the Upper Cover and hold it up to the Lower Cover to align and center it side to side so that the snaps along the bottom edge will leave the paint imprint in the location on the panel as shown in **Fig.8a**. You will do the same thing by using a paint marker and painting the surface of the existing snap in the Upper Cover and then pressing it to the panel leaving the paint imprint. Do this for both sides for the lower edge snaps, then install the other half in the center of the imprint as you have previously done as shown in **Fig.8b**.



9. Next, mark the next two snaps with the paint Marker and then stretch it up and over the top surface of the grill, then press down leaving the imprint on the grill and install the next snap half as shown in **Fig.9**. Repeat for the other side of the cover.



**Fig.9**

10. Now repeat marking the last top row of snaps of the cover, one at a time, stretching the cover tight and then pressing down the snap to mark each location on the front of the "hood" where to install the other snap halves as before. See **Fig.10a-b**.



**Fig.10a**

**Fig.10b**

11. Then snap on the remaining Upper Cover to complete this install for a machine with no Bumper. See **Fig.11**.



**Fig.11**

## Instructions for Machines WITH a Bumper

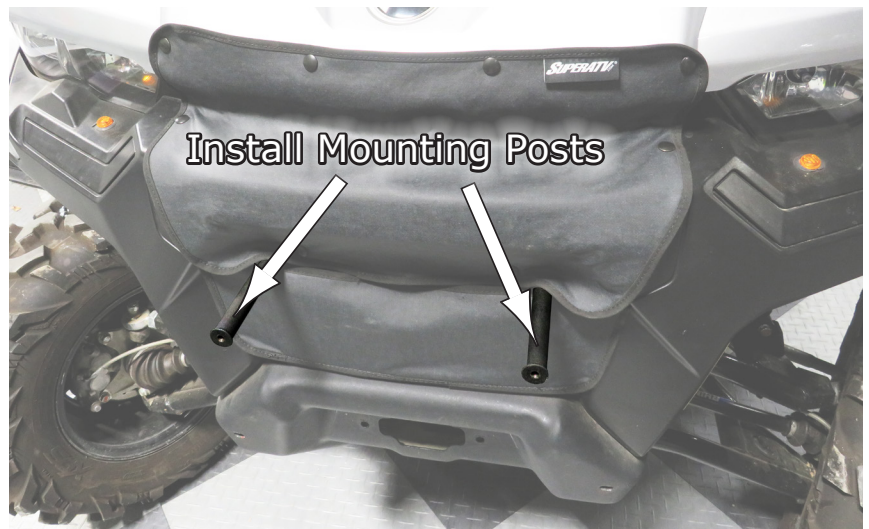
If you have a bumper and or Wench system, the following will guide you for the installation of this Grill Cover in your case.

1. First remove the Bumper and or Wench from the machine. You can now follow these instructions starting at the beginning of this manual for installation of the Lower and Upper covers and snaps just as if you didn't have a bumper and or wench.

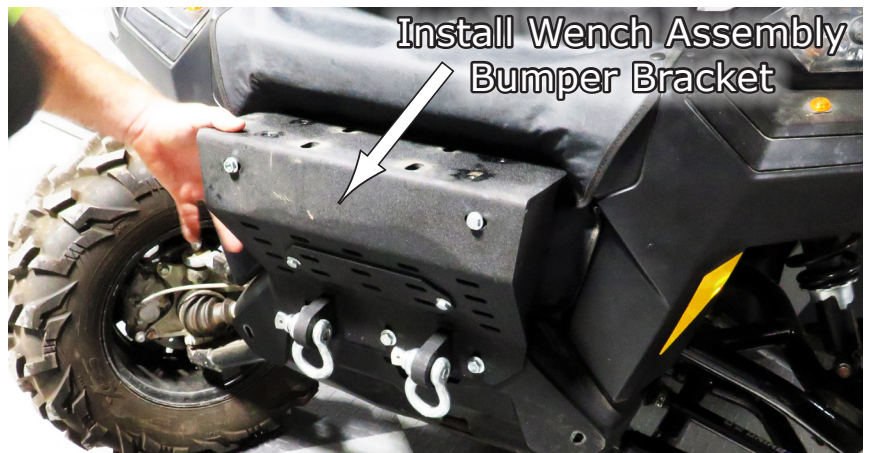
Once you have both upper and lower Cover pieces snapped onto your machine as shown in **Fig.11**, at this point is where you start to re-install the bumper and or wench system back onto your machine.

The first thing is to re-install the two mounting posts between the two covers as shown in **Fig.12a**. They will install in the same location as removed. See **Fig.12a**.

2. Next re-install the wench assembly bumper bracket as shown in **Fig.12b**.



**Fig.12a**



**Fig.12b**

3. Then install the Bumper and Brush Guard and tighten Secure. See **Fig.13**.



**Fig.13**

**Liability Statement**

SuperATV's® products are designed to best fit user's ATV/UTV under stock conditions. Adding, modifying, or fabricating any factory or aftermarket parts will void any warranty provided by SuperATV® and is not recommended. SuperATV's® products could interfere with other aftermarket accessories. If user has aftermarket products on machine, contact SuperATV® to verify that they will work together.

Although SuperATV® has thousands of satisfied customers, user should be aware that installing lift kits, long travel, or suspension kits, tires, etc. will change the ride of machine and may increase maintenance and part wear. Operating any off-road machine while, or after, consuming alcohol and/or drugs increases risk of bodily harm or death. No warranty or representation is made as to this product's ability to protect user from severe injury or death. SuperATV® urges operators and occupants to wear a helmet and appropriate riding gear at all times.

By purchasing and installing SuperATV® products, user agrees that should damages occur, SuperATV® will not be held responsible for loss of time, use, labor fees, replacement parts, or freight charges. SuperATV®, nor any 3rd party, will not be held responsible for any direct, indirect, incidental, special, or consequential damages that result from any product purchased from SuperATV®. The total liability of seller to user for all damages, losses, and causes of action, if any, shall not exceed the total purchase price paid for the product that gave rise to the claim.

SuperATV® will warranty only parts provided by SuperATV®. Any damage or problems with OEM housings, bearings, seals, or other manufacturers' products will not be covered by SuperATV®. SuperATV® parts and products are not warranted if item was not installed properly, misused, or modified.

Installing, adding, modifying, or fabricating any factory or aftermarket product to your ATV/UTV may violate certain local, state, and federal laws. Be advised that laws vary depending on town, city, county, state, etc. Use of certain products on public streets, roads, or highways may be in violation law. The Buyer is solely and exclusively legally and personally responsible for any violation of the law by the installation or use of the product. You must abide by all local, state, and federal laws, including but not limited to vehicle safety, traffic laws, and ordinances. It is your responsibility to know the laws and how they apply to you.

The Buyer is responsible to fully understand the capability and limitations of his/her vehicle according to manufacturer specifications, warnings and instructions and agrees to hold SuperATV® harmless from any damage resulting from failure to adhere to such specifications, warnings and/ or instructions. The Buyer is also responsible to obey all applicable federal, state, and local laws and ordinances when operating his/her vehicle while using this product, and the Buyer agrees to hold SuperATV® harmless from any violation thereof.

If you have any problems/questions on this kit, contact us by email at [Superatv.com](http://Superatv.com).

**Need help with your installation?**



[sales@superatv.com](mailto:sales@superatv.com)



[www.superatv.com](http://www.superatv.com)



1-855-743-3427



8:00am - 9:00pm EST M-Th  
8:00am - 7:00pm EST Friday  
9:00am - 2:00pm EST Saturday

*Thank You  
For Choosing*



**Like SuperATV on Facebook to keep up to date on new products!**