

Do not discard packaging until product has been successfully installed.



Wire Ties



Adaptor x 2

Tubing



Ducting



Blower



Elbow



90° Elbow x 2



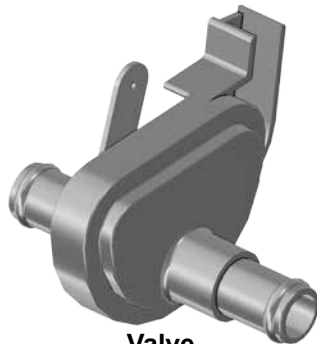
Y Fitting



4x Large Clamp



Vent x 4



Valve



8x Small Clamp



2x Grommet



Adapter x 3



Switch



Hose Pliers



Knob

(kit contents continue on following page)

**Need help with your installation?**

 [sales@superatv.com](mailto:sales@superatv.com)
 [www.superatv.com](http://www.superatv.com)

 1-855-743-3427
  8:00am - 8:00pm EST M-Th  
 8:00am - 7:00pm EST Friday  
 9:00am - 2:00pm EST Saturday

Read instructions and view illustrations before beginning.

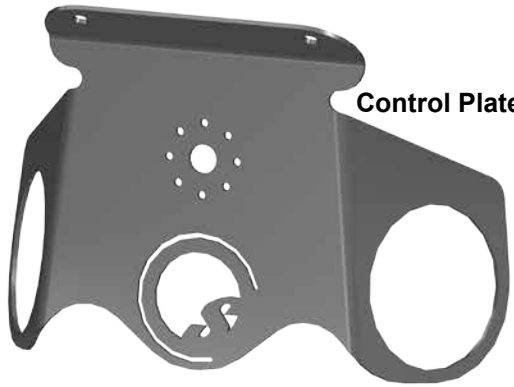
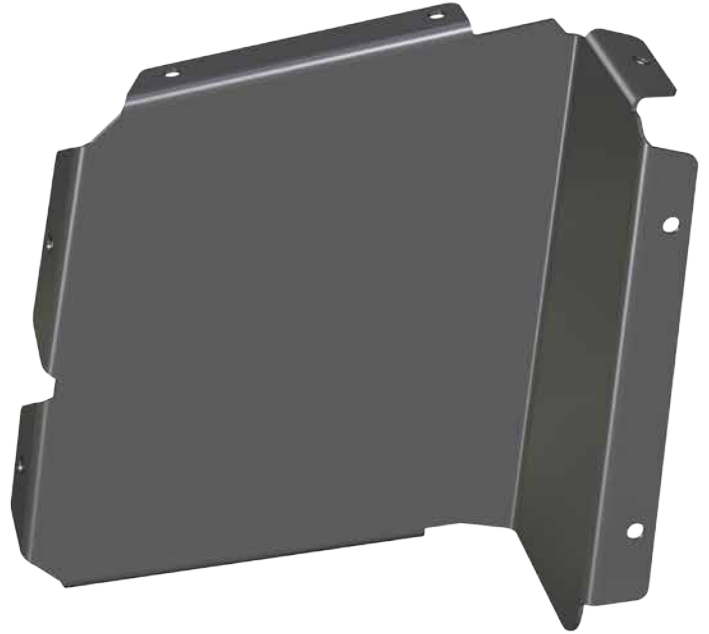
Thank You  
 For Choosing  
**SUPERATV**.COM<sup>®</sup>

(kit contents continued)



Hose Plate

Glove Box Plate



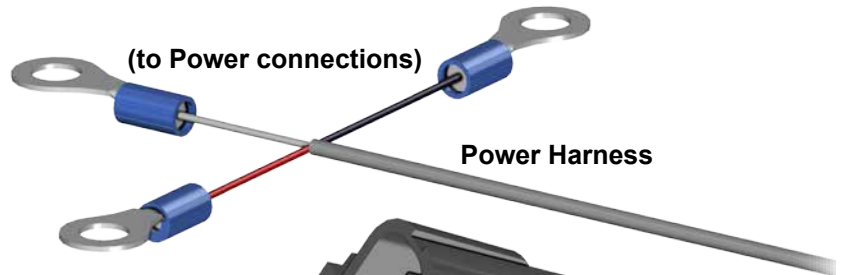
Control Plate



Back Plate

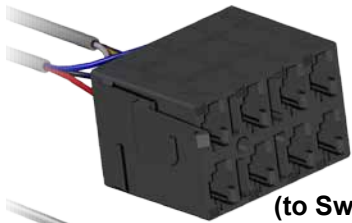


Bracket

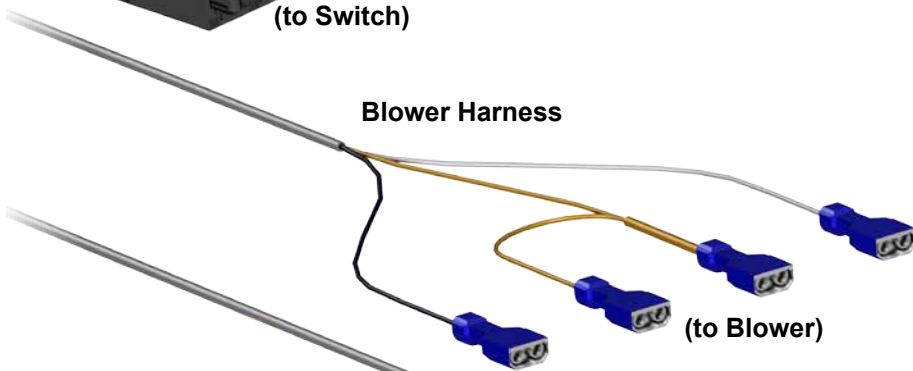


(to Power connections)

Power Harness

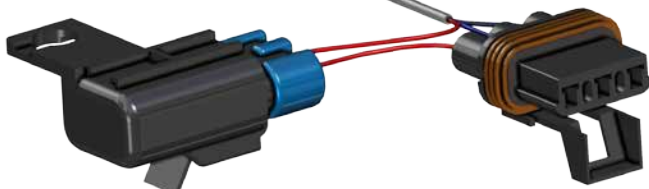


(to Switch)



Blower Harness

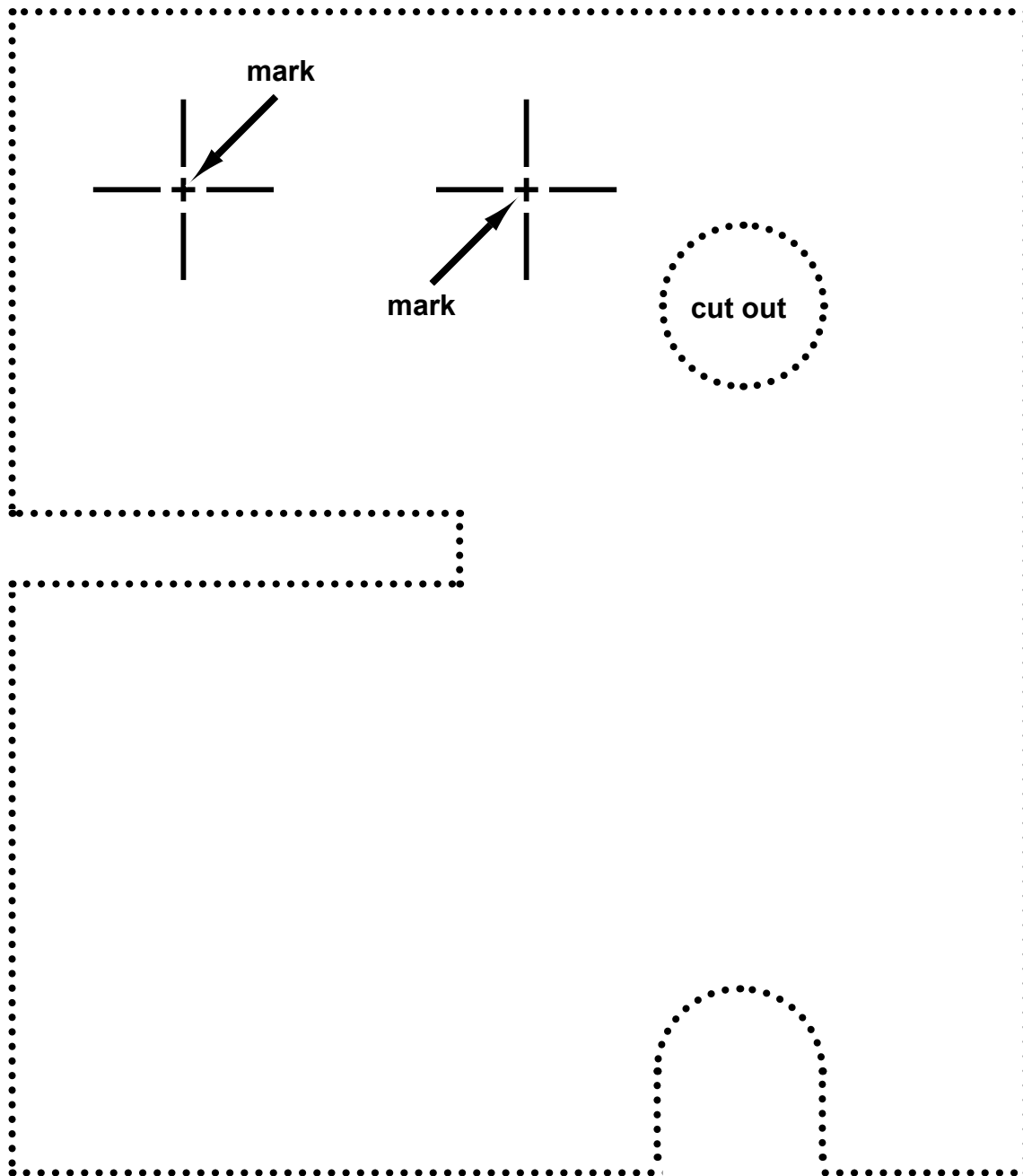
(to Blower)



(to Power Harness)

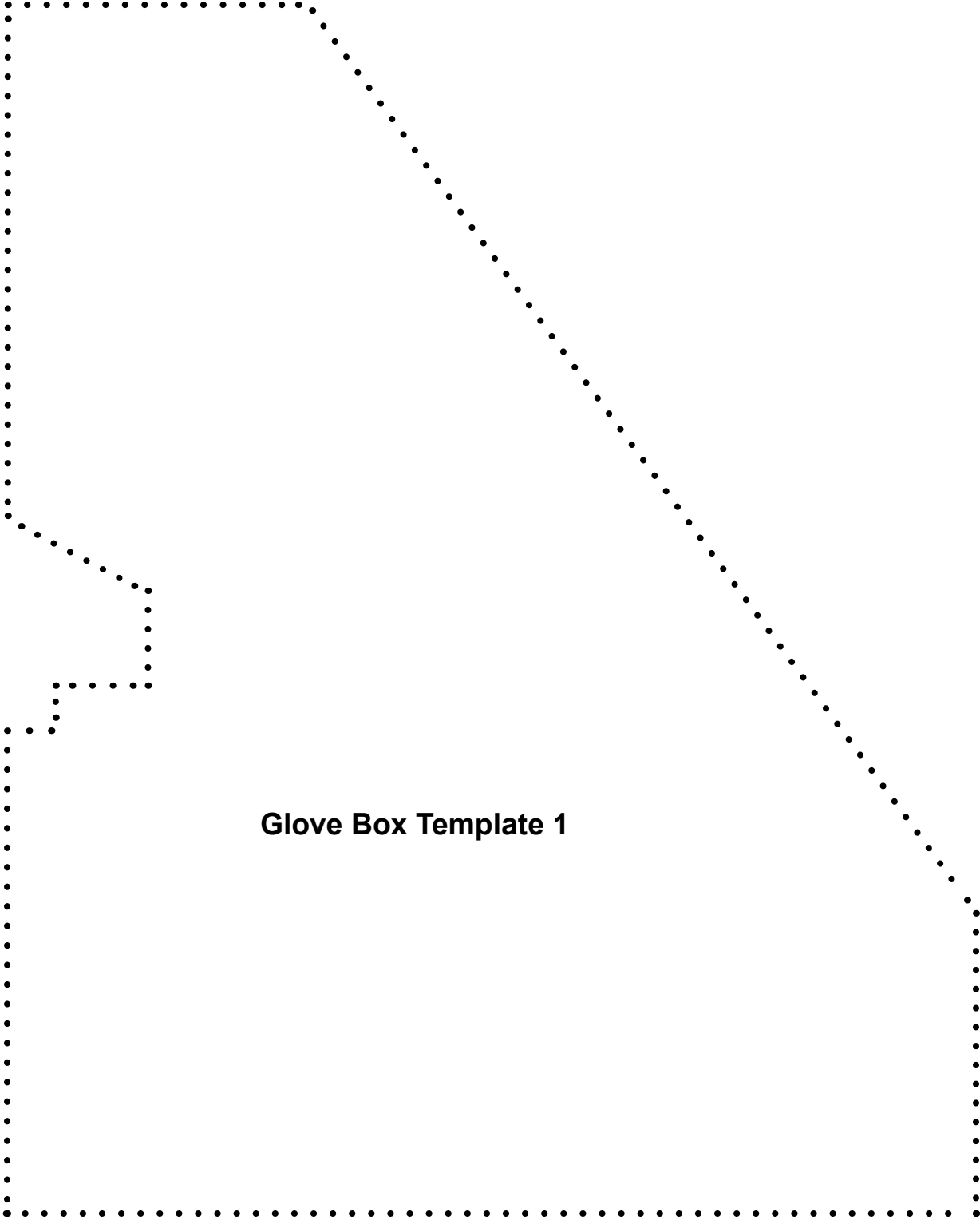
## Firewall Hose Template

- Follow profile and cut template.
- Attach to location shown on page 11 with tape.
- Mark centers, remove, and cut (2)  $\text{Ø}1\text{-}1/4\text{'}$  holes.



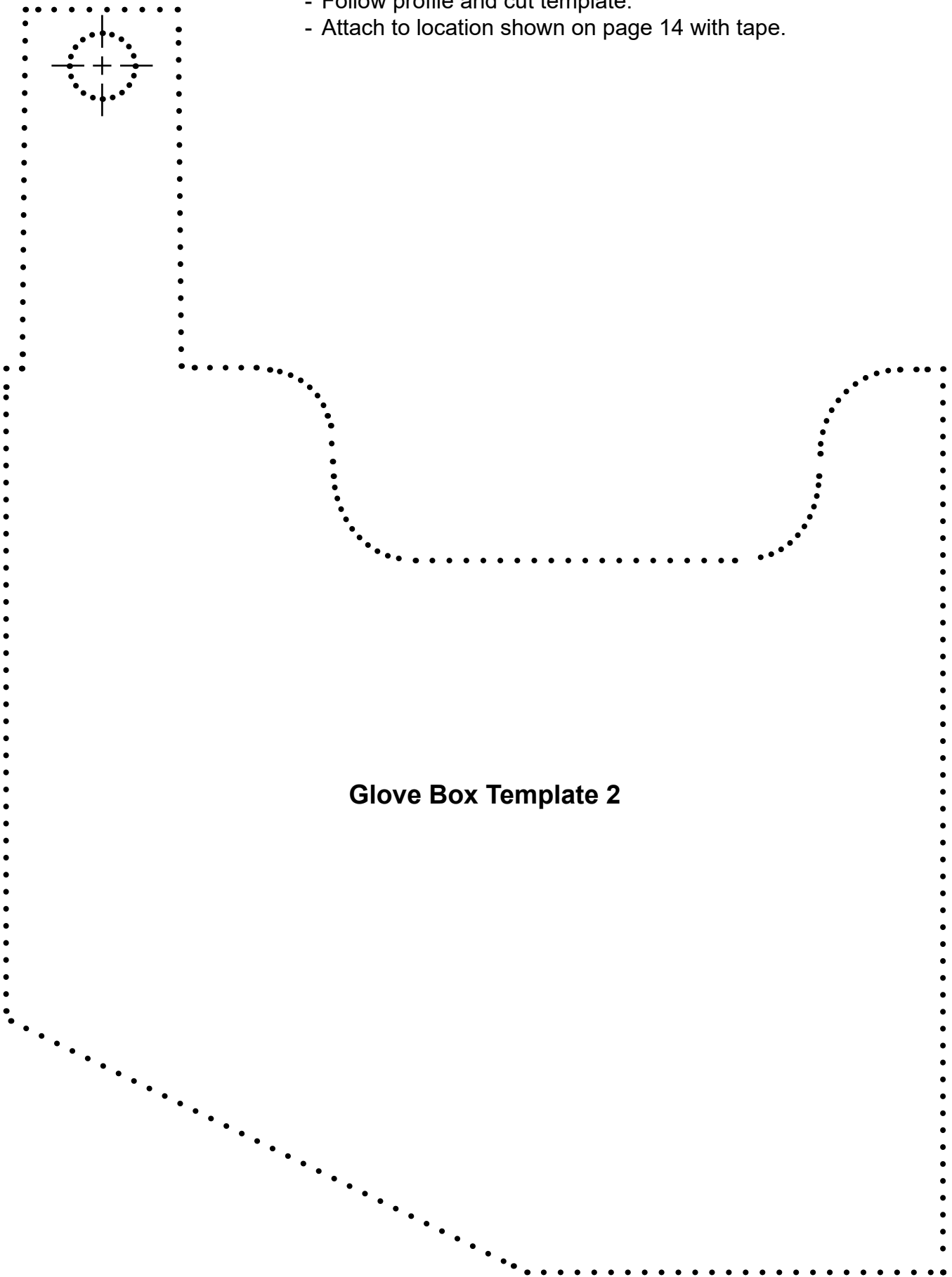
***this page intentionally blank***

- Follow profile and cut template.
- Attach to location shown on pages 14 and 15 with tape.



***this page intentionally blank***

- Follow profile and cut template.
- Attach to location shown on page 14 with tape.

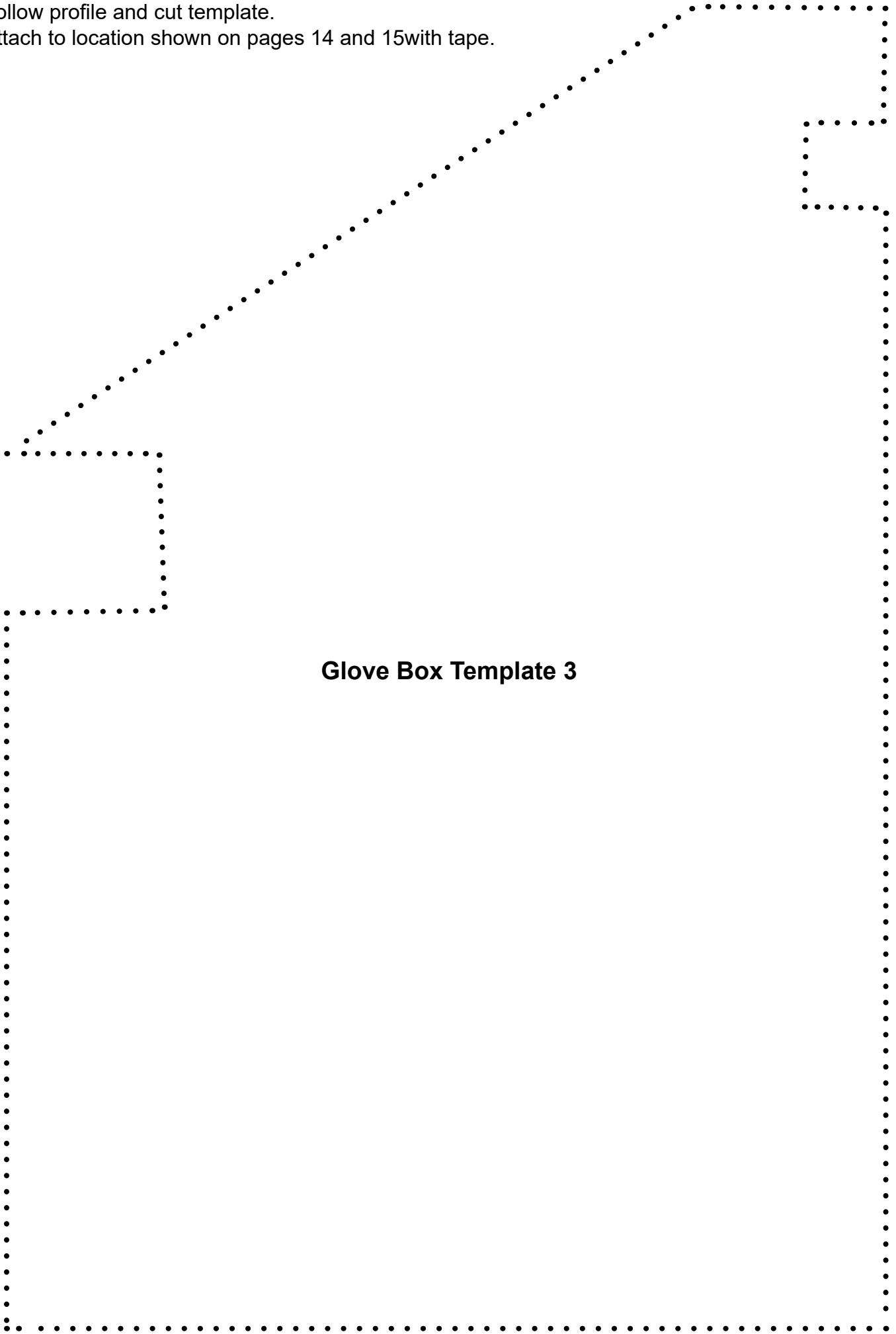


**Glove Box Template 2**

***this page intentionally blank***



- Follow profile and cut template.
- Attach to location shown on pages 14 and 15 with tape.

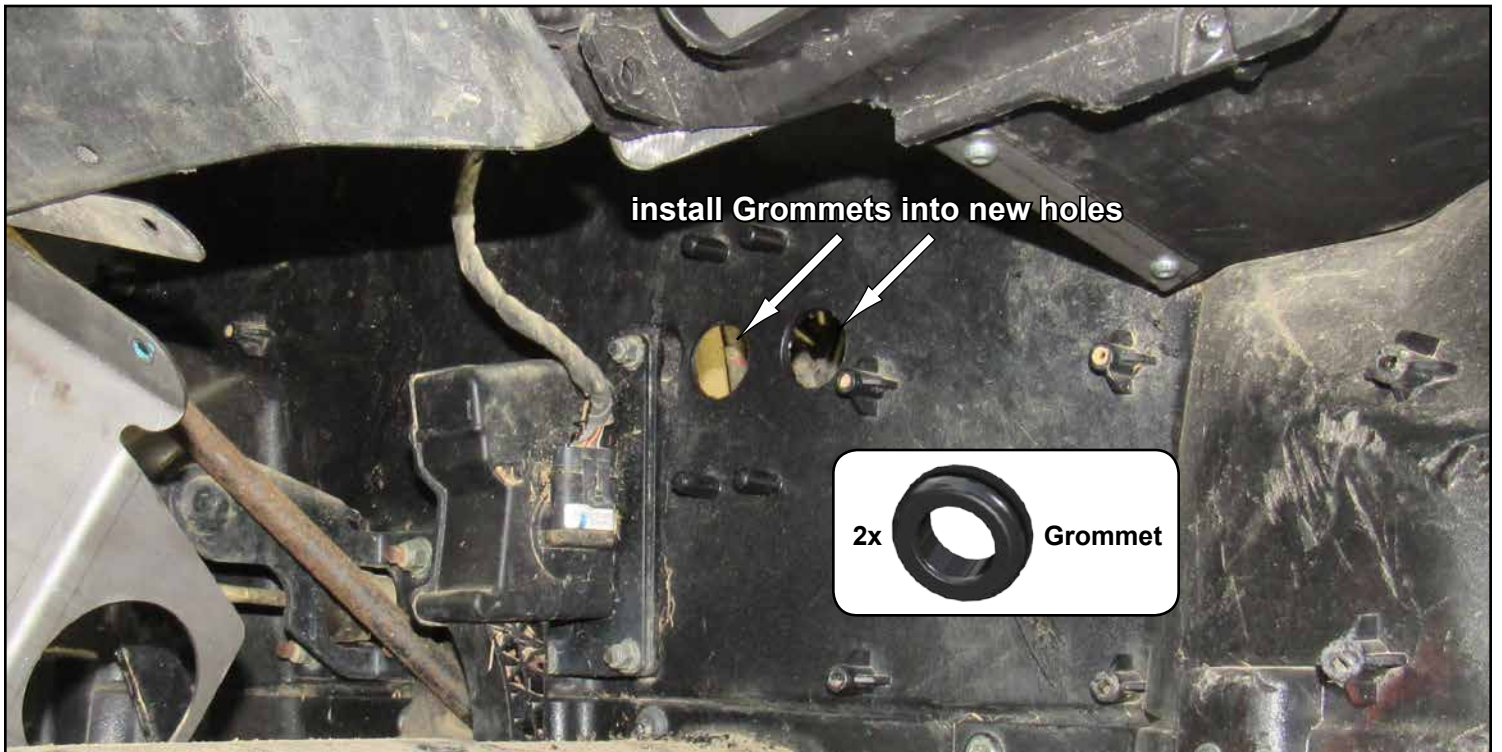


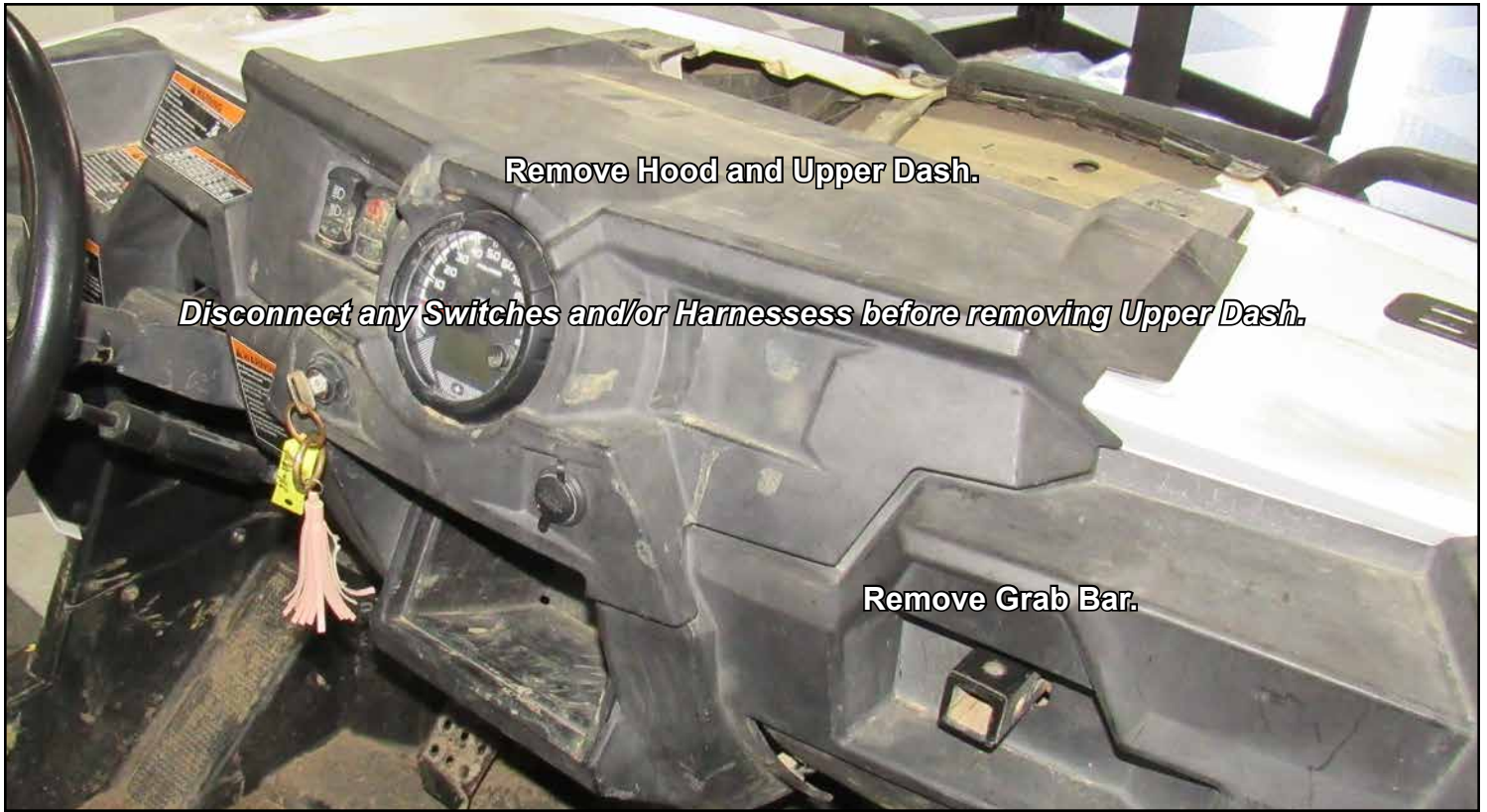
**Glove Box Template 3**

***this page intentionally blank***



- Mark locations for Grommets and cut (2) Ø1-1/4" holes through Firewall.







Remove Glove Box.

- Install Bracket to Double Din with hardware shown; tighten.



Bracket

stock

- Tape Templates 2 and 3 into position.
- Use a straight edge and marker to make lines as shown.



- Tape Template 1 into position.
- Use a straight edge and marker to make lines as shown.
- Remove Templates and cut away material; see following page for what Glove Box should look like after cutting.



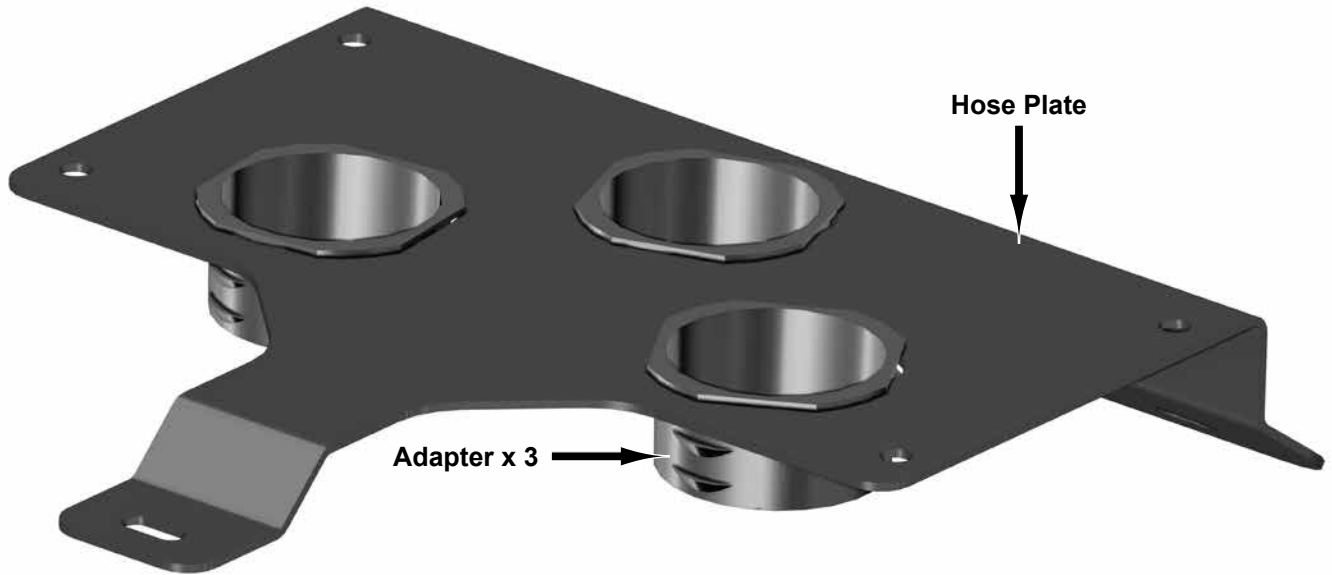


- Install Glove Box Plate to Glove Box with hardware shown.

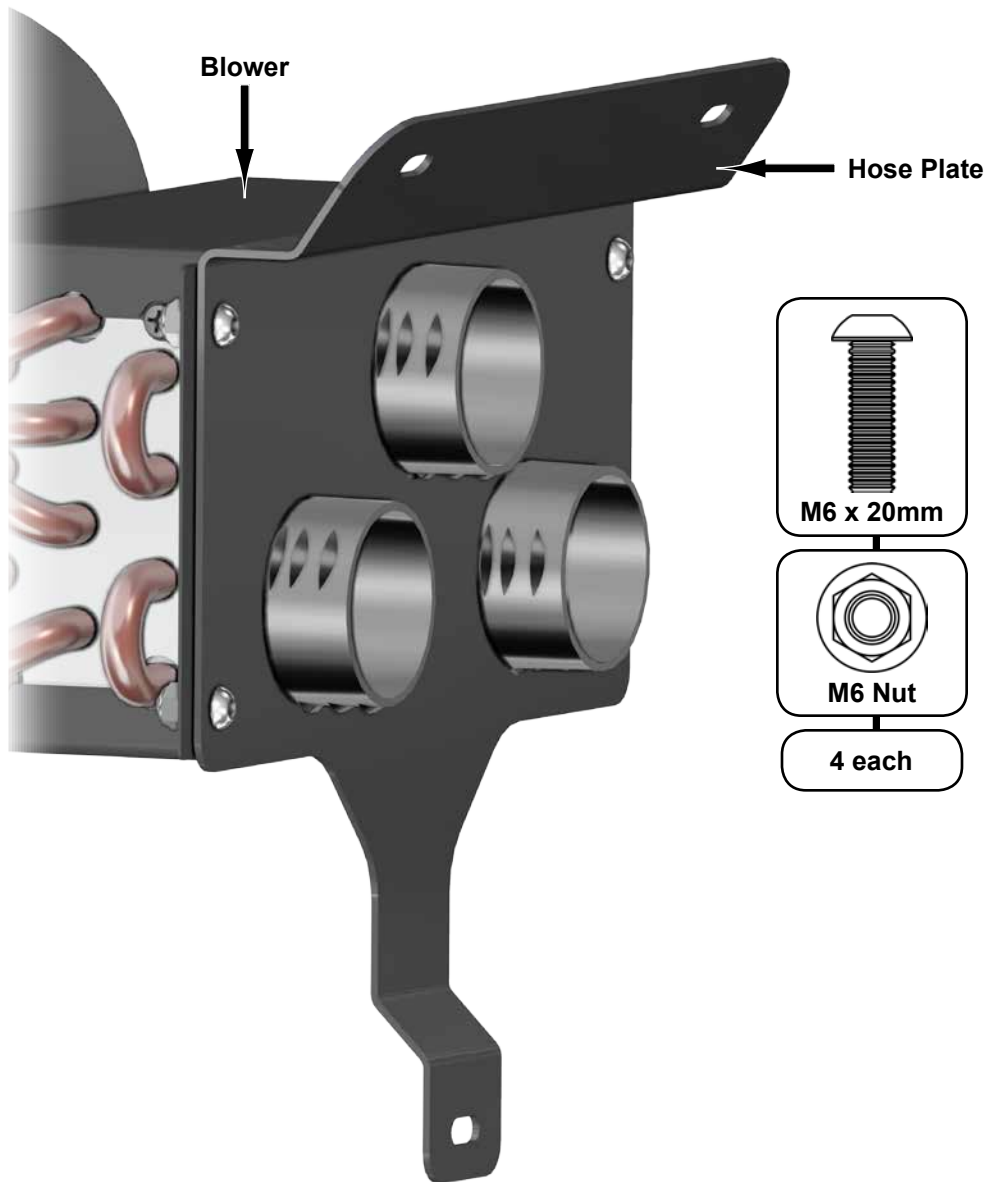




- Install Adapters into Hose Plate.



- Install Hose Plate to Blower with hardware shown; tighten.





- Separate Knob and install to Control Plate.



Control Plate →

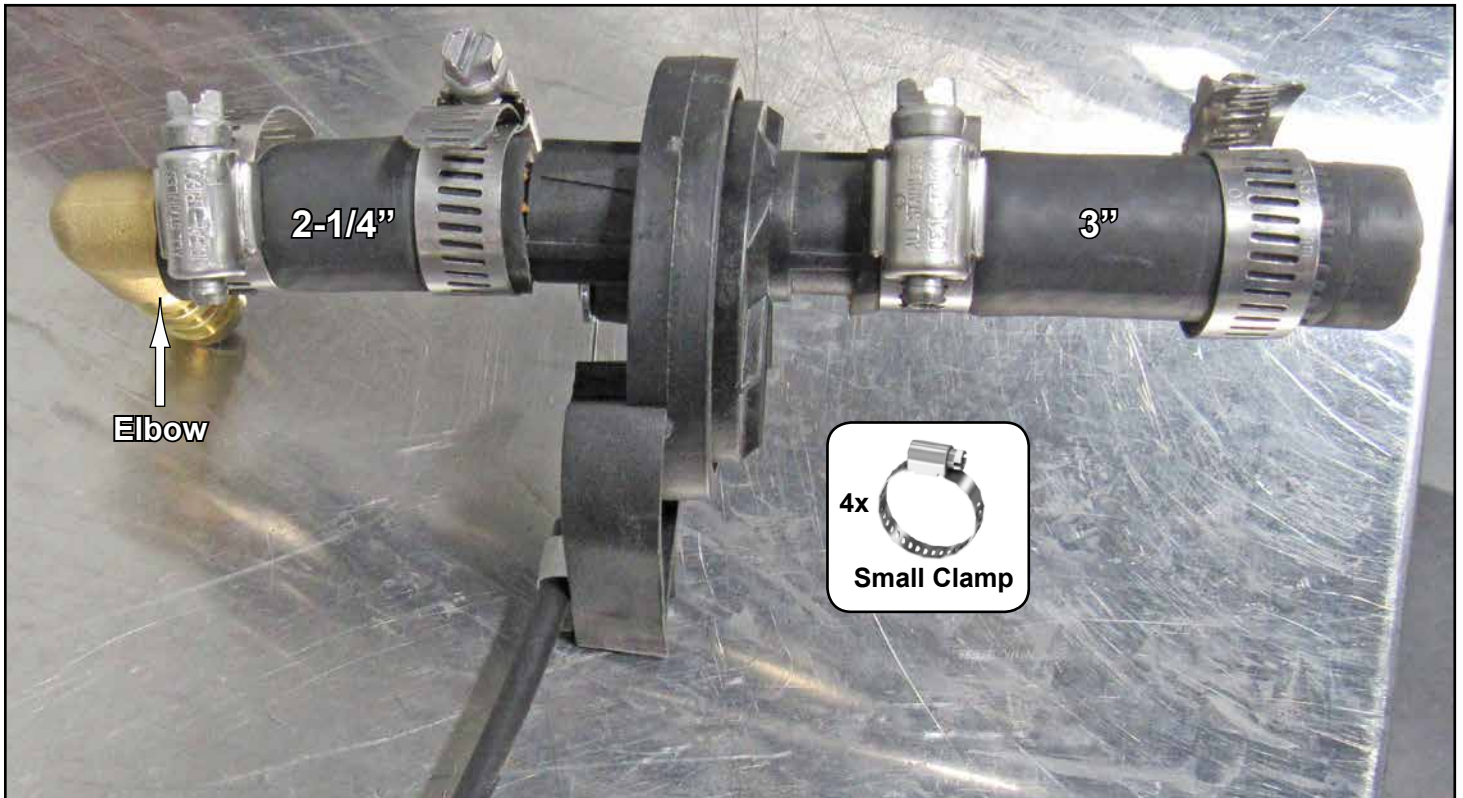
- Separate Vents and install to Control Plate.



Connect Cable, from Valve, to Knob.



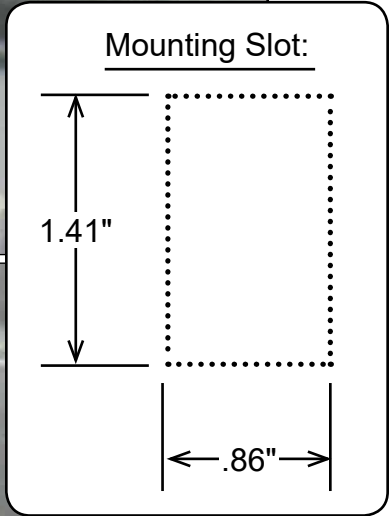
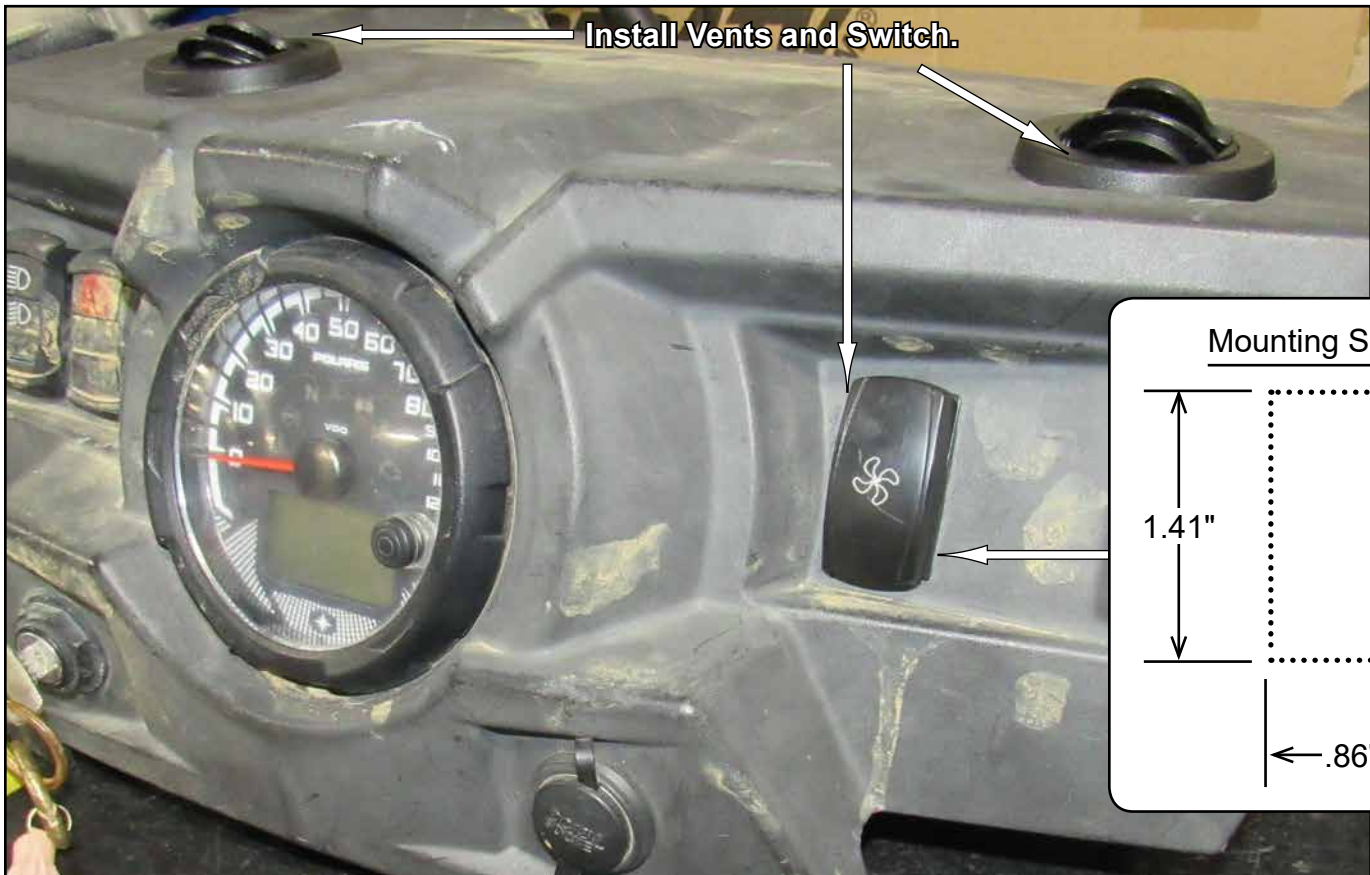
- Cut Tubing to lengths shown and install to Valve. Secure with Clamps.
- Install Elbow as shown.



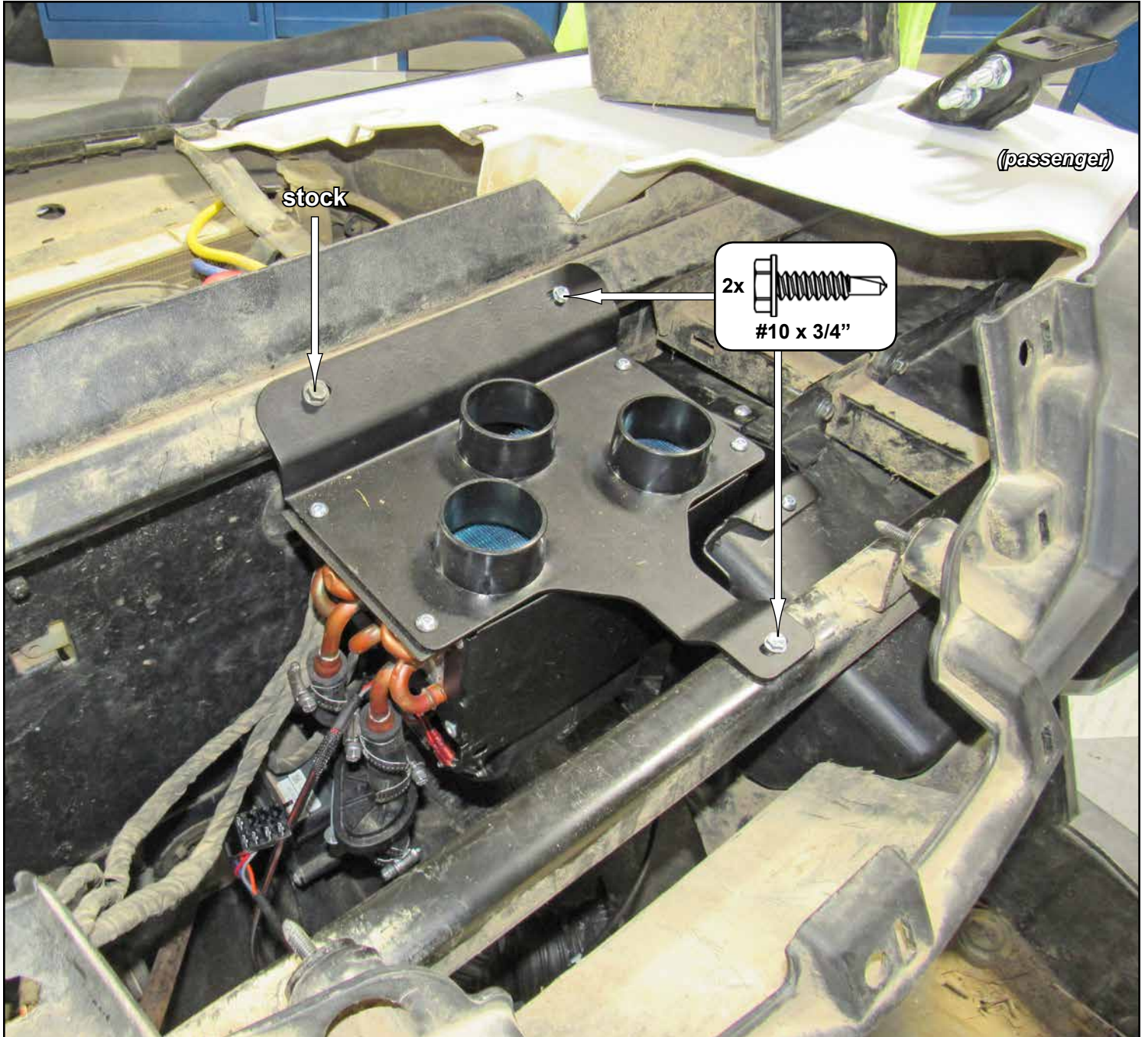
- Cut Ducting to lengths shown and install to Vents.
- Install Y-Fitting to Ducting.
- Secure Ducting with Wire Ties.



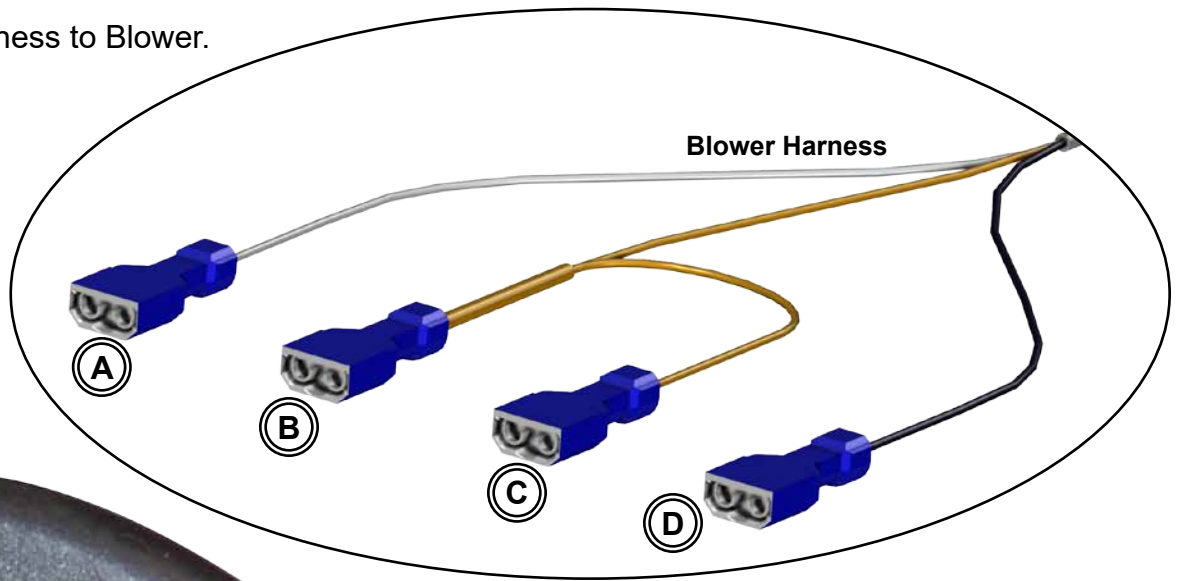
- Place Vents onto Upper Dash. Vents should be in general area as shown below.
- Mark locations for Vents and cut (2) Ø2-1/2" holes.



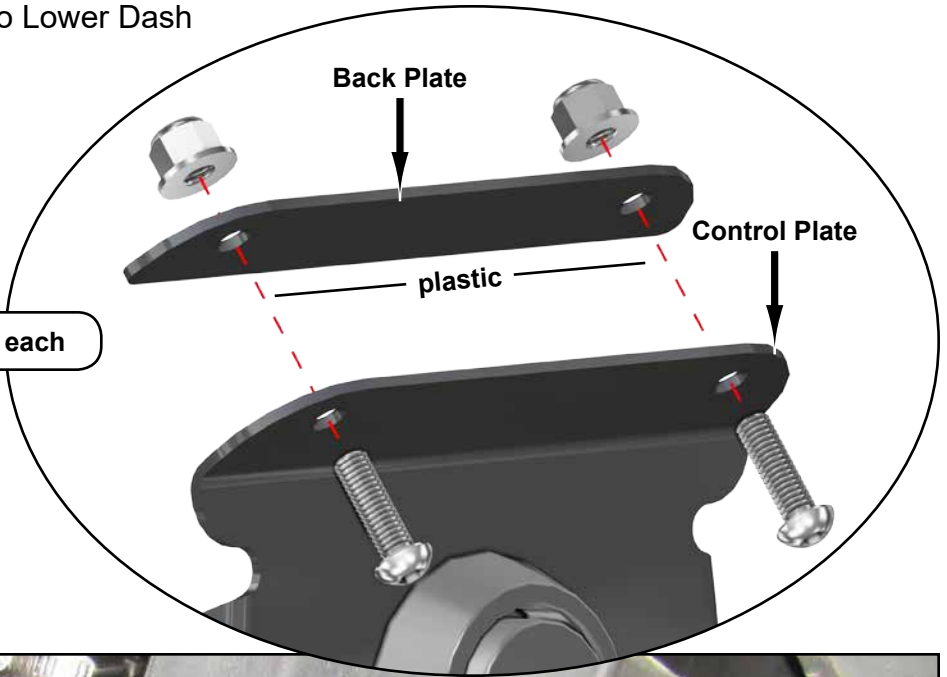
- Secure Hose Plate to Frame with hardware shown; tighten.



- Connect Blower Harness to Blower.



- Install Control Plate and Back Plate to Lower Dash with hardware shown; tighten.





- Connect Power Harness to stock ACC Power Supply.
- Connect opposite end to corresponding plug on Blower Harness.

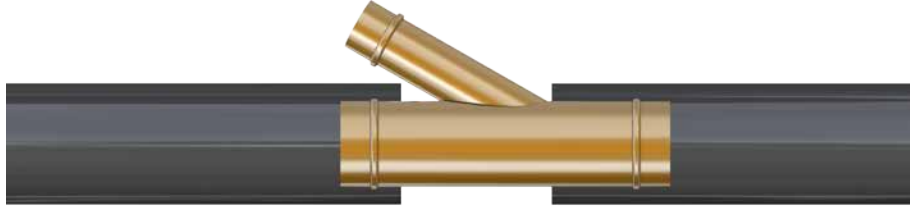


- Cut and install Ducting to Vents, Y-Fitting, and Adapters. Secure with Wire Ties.



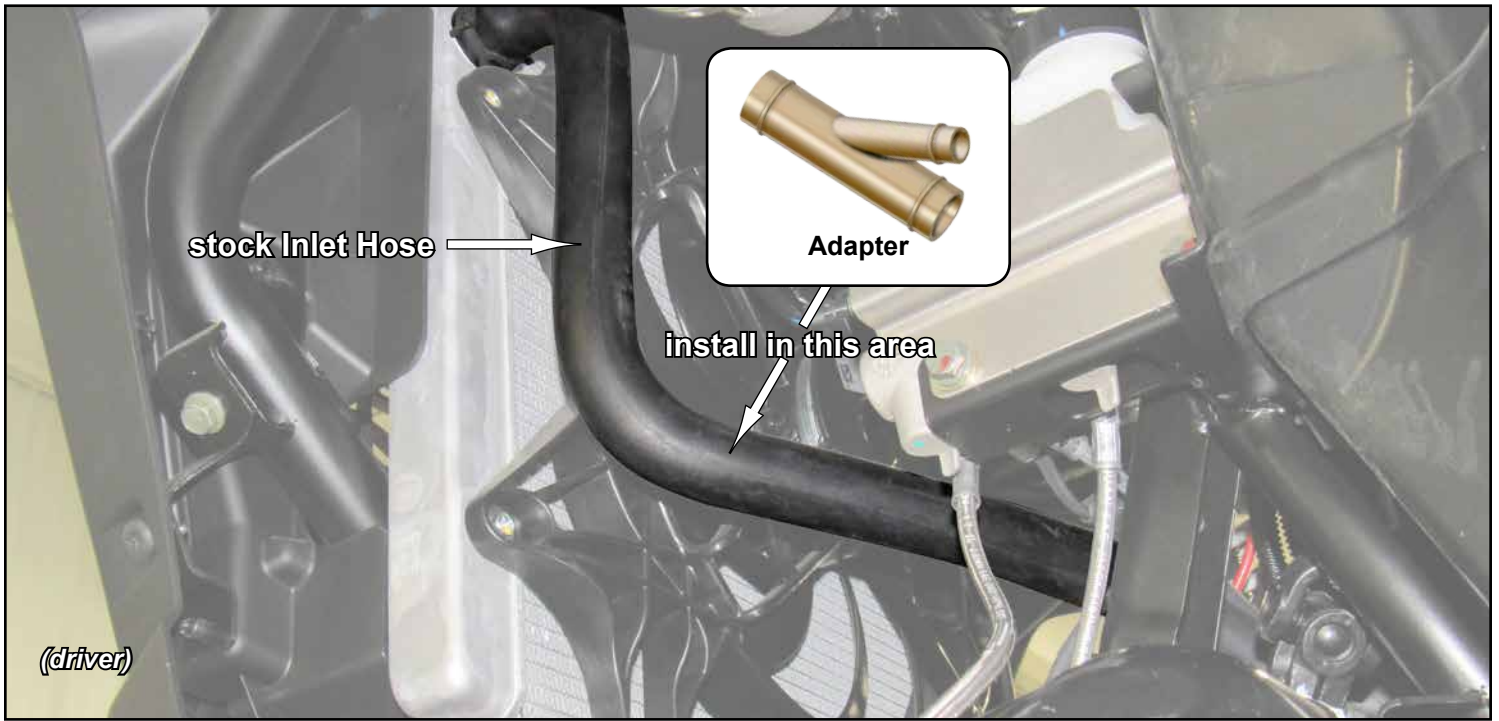
- Raise front of vehicle and place on jack stands.
- Remove Lower Radiator Hose and drain coolant.

To prevent stock Radiator Hoses from being cut short, use provided Adapters as templates.

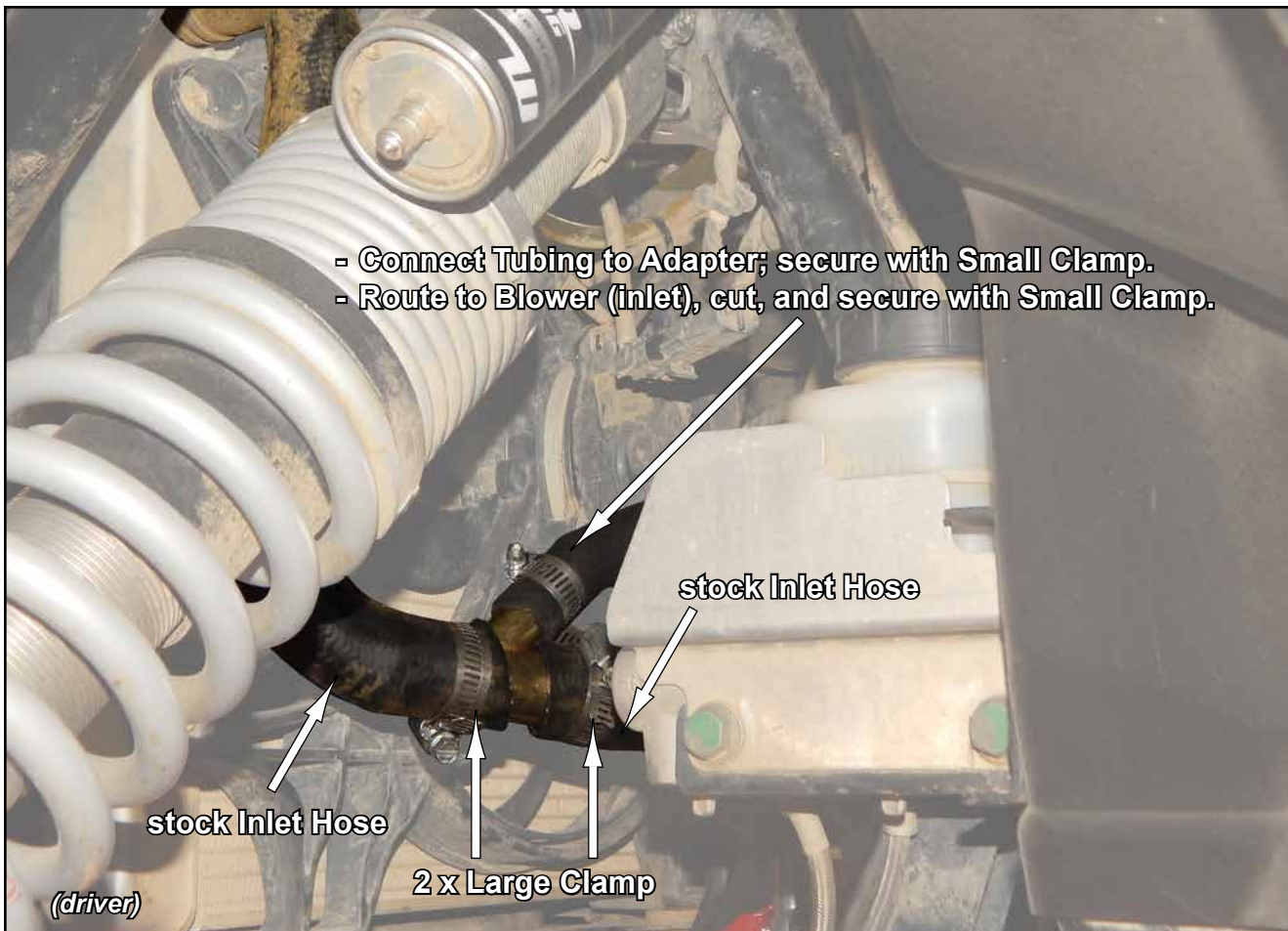


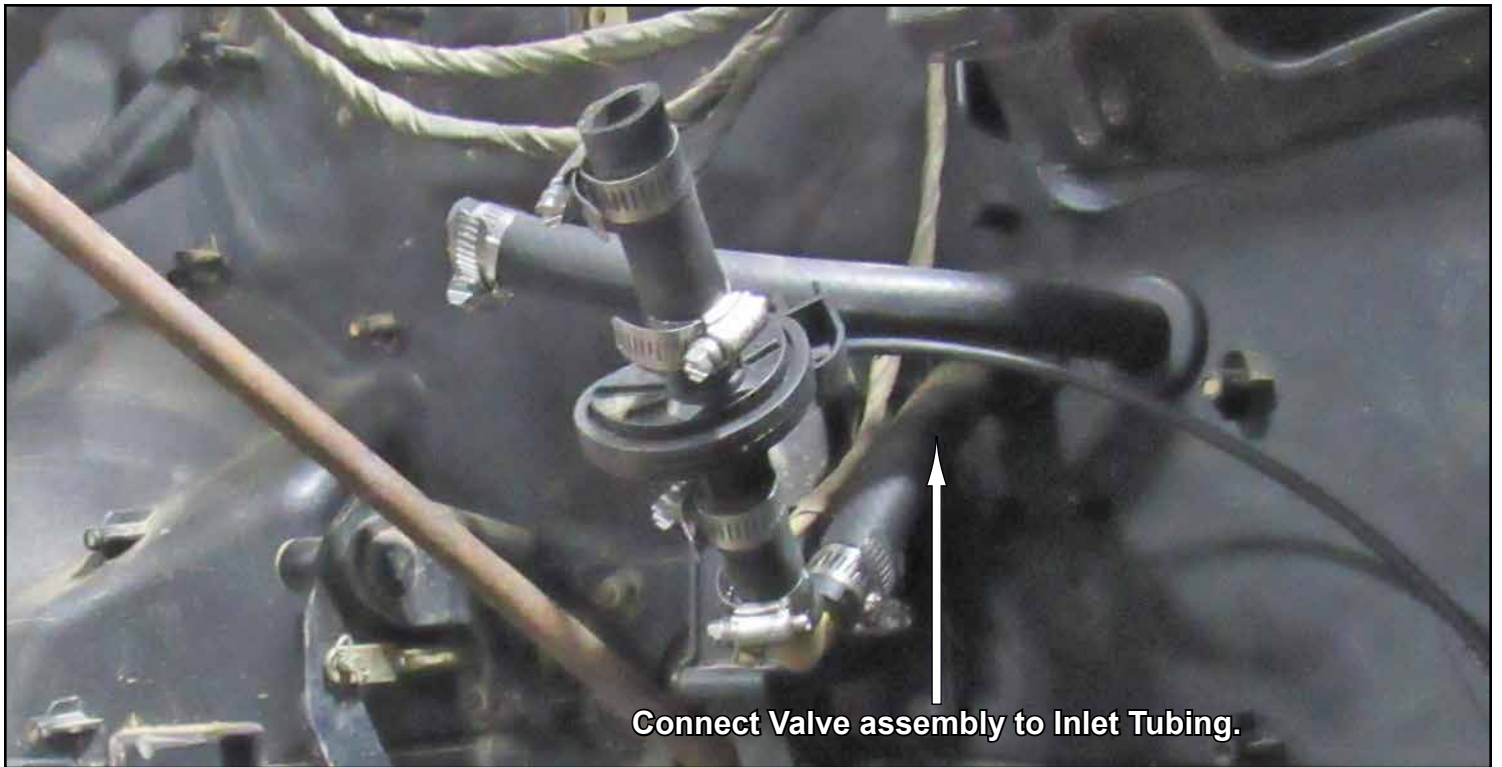
- Mark locations on stock Outlet Hose to be cut.
- Cut and secure to Adapter with provided Large Clamps.





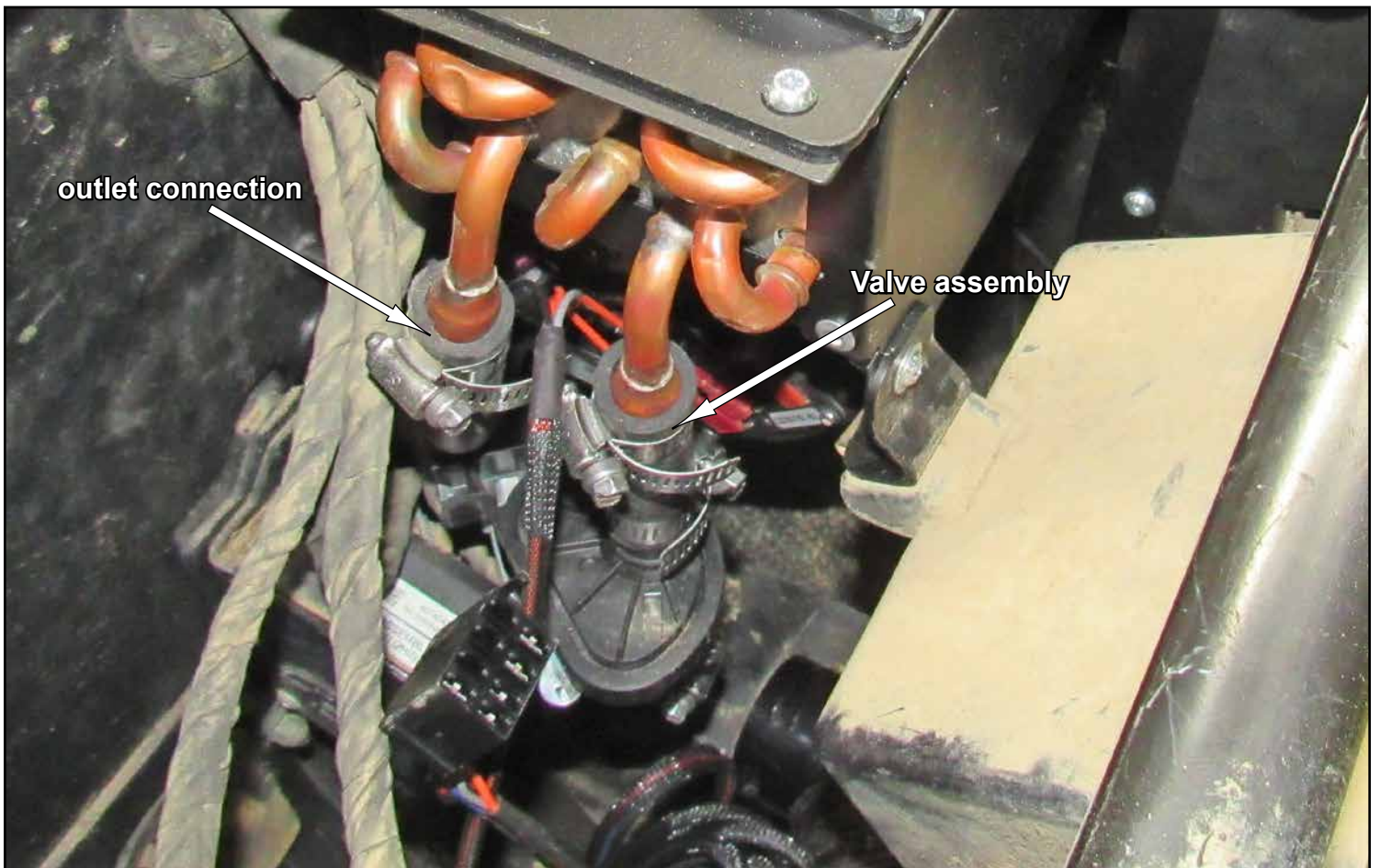
- Mark locations on stock Inlet Hose to be cut.
- Cut and secure to Adapter with provided Large Clamps.



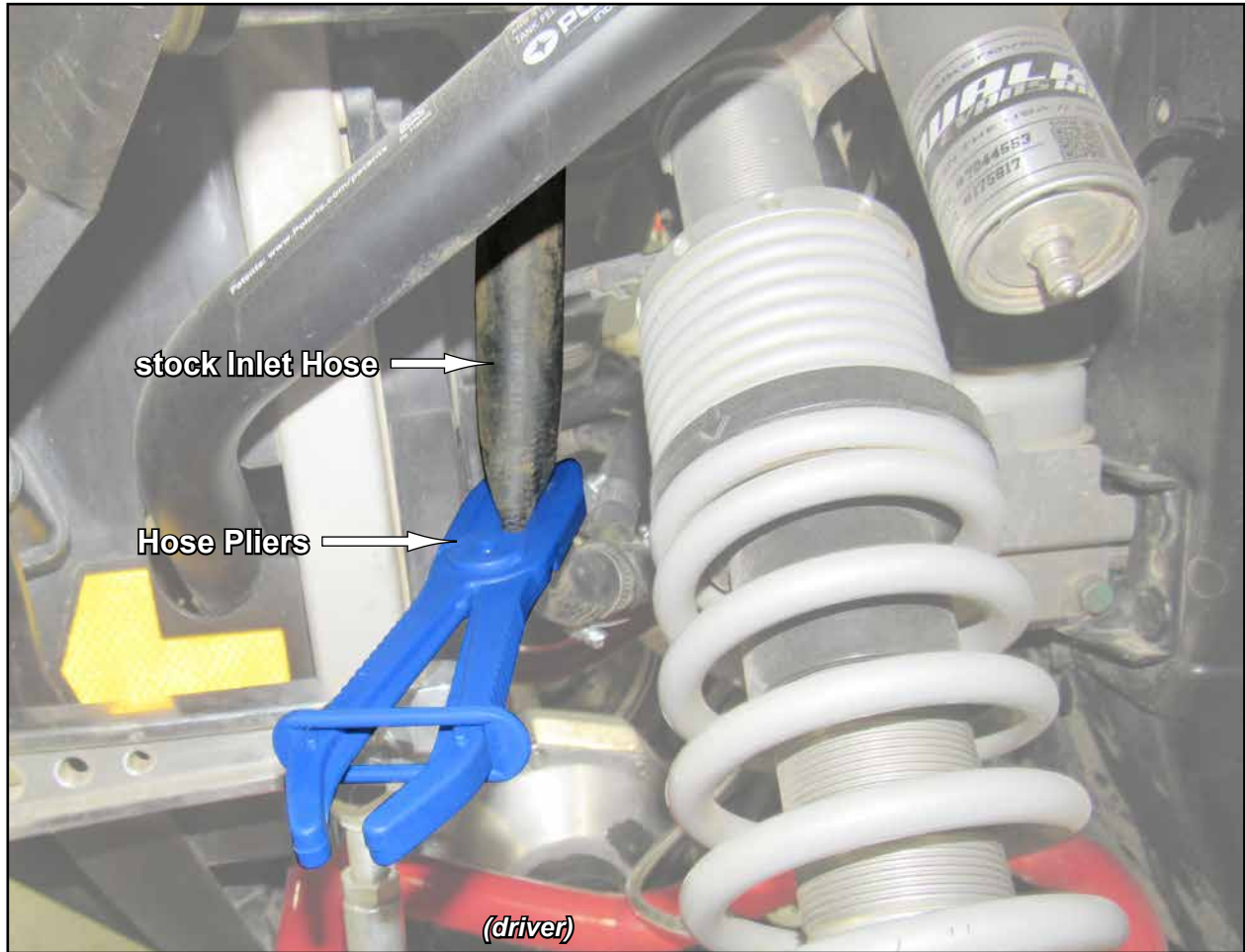


Connect Valve assembly to Inlet Tubing.

- Use Small Clamps to connect and secure Tubing to Blower.



- Fill coolant level to manufacturers recommended setting.
- Start machine and run at 3000 RPM until engine is hot.
- Use provided Hose Pliers and pinch off Inlet Hose as shown below.



- Remove Hose Pliers after Radiator Fan turns ON.
- After Radiator Fan turns OFF, pinch Inlet Hose again and remove after Radiator Fan turns ON.
- Turn machine off and let engine completely cool; may take several hours.
- Check Coolant Level in Radiator and Reservoir; adjust as needed.
- Start machine and repeat "pinch" steps again.