

FBTT1-012005 -15 TOYOTA TACOMA
FRONT BUMPER**TOOLS REQUIRED**

- Plastic Fastener Remover/Flat Head Screw Driver
- 1/2" & 3/8" Ratchet
- 3" to 6" 1/2" and 3/8" Extensions
- 10, 13, 14, 16 & 17 mm Sockets
- Snips/Shears

SKILL LEVEL

- Intermediate
 - 1 (you) to 2 persons
- Medium skill required, however due to weight of items, help is recommended.

TIME REQUIRED

- 3 to 4 hours
- Time to install this should only take about three to four hours.

WARNINGS/CAUTIONS BEFORE STARTING INSTALLATION

Before you install this kit – Read and understand all instructions, warnings, cautions, and notes contained in this installation instruction guide. Consult your vehicle owner's manual for proper disconnection of electrical and lifting of vehicle if required for installation of this product.

This install may require some technical skills and knowledge of basic mechanical work. If you do not feel that you are capable of performing this install please take this product to a trained professional.

After reading this guide please contact us with any questions or concerns before installing product.
Customer Service: 855-680-9595

DV8 Offroad is not responsible for any bodily injury or harm to you or your vehicle as a result of an improper install.

Proper installation of this kit required knowledge of the factory recommended procedures for removal and installation of original equipment components. We recommend that the factory shop manual and any special tools needed to service your vehicle be on hand during the installation. Installation of this kit without proper knowledge of the factory recommended procedures may affect the performance of these components and the safety of the vehicle

- Always wear eye protection when operating power tools

Inspect all contents of this package to make sure product is not damaged and all installation hardware has been included. If parts are missing from kit, please be prepared to provide the following information

1. Name of purchase location
2. Bar Code on side of box
3. Date above bar code
4. Date inside box cover



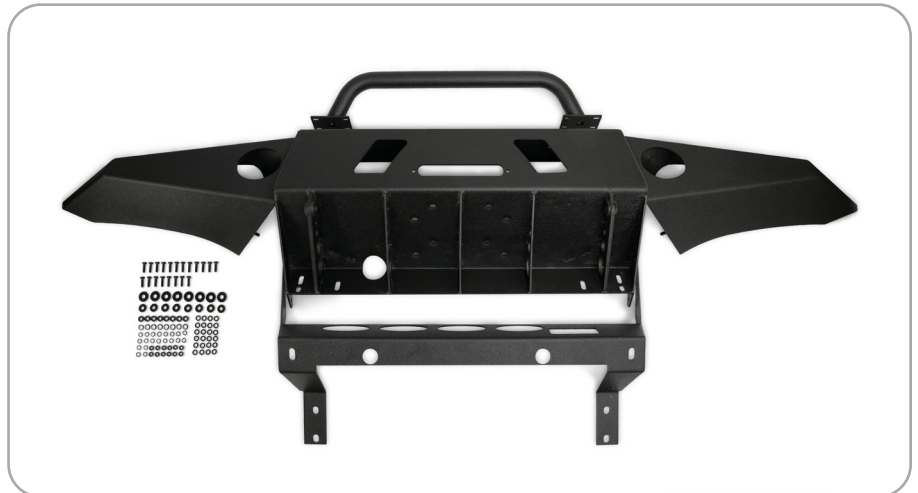
INSTALLATION MANUAL

STEP 1

Begin by opening up all pieces included and inspecting them prior to install. If you are missing any components or have any questions prior to your install, please contact the company the item was purchased from.

Hardware Included:

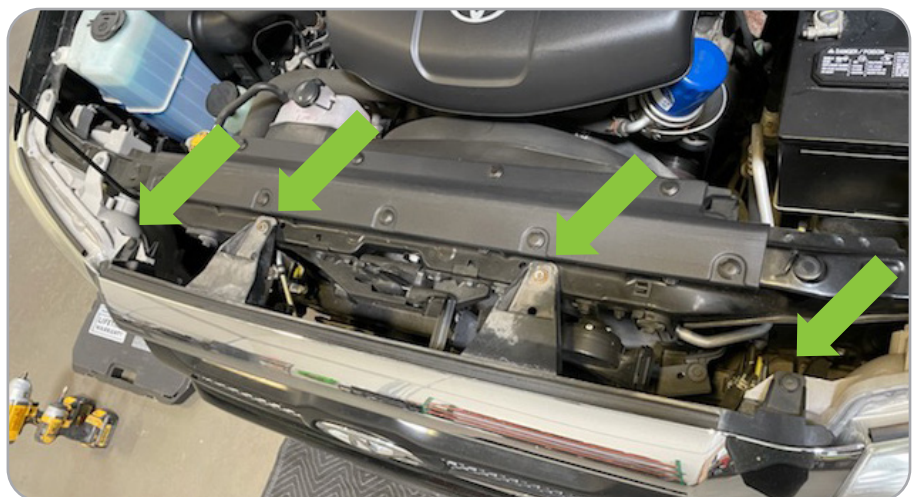
- | | |
|-----------------------|-----------------------|
| (20) M8 25mm Bolts | (8) M10 Nuts |
| (20) M8 Split Washers | (8) M10 Split Washers |
| (20) M8 Flat Washers | (8) M10 Flat Washers |
| (12) M8 Nuts | |



STEP 2

Begin by removing your grill using a 10mm socket for the two bolts in the center. On each side of the center bolts near the edge of the grill, remove the push pins by pulling up on the center portion, and then pulling up on the entire pin.

Pull the bottom of the grill out straight from the vehicle to release the clips.



INSTALLATION MANUAL

STEP 3

Remove the small plastic trim under each headlight. Pull the portion closest to the center of the truck out towards the front of the truck to release green body clip, and then pull the entire piece towards center of the truck.



STEP 4

Remove the 3 push pins on the top side of the bumper, and the two 10mm bolts on the boom center of the bumper.



INSTALLATION MANUAL

STEP 5

Remove the two 10mm bolts on the bottom side of the bumper holding each wheel well in place, gently pull back the wheel well.



STEP 6

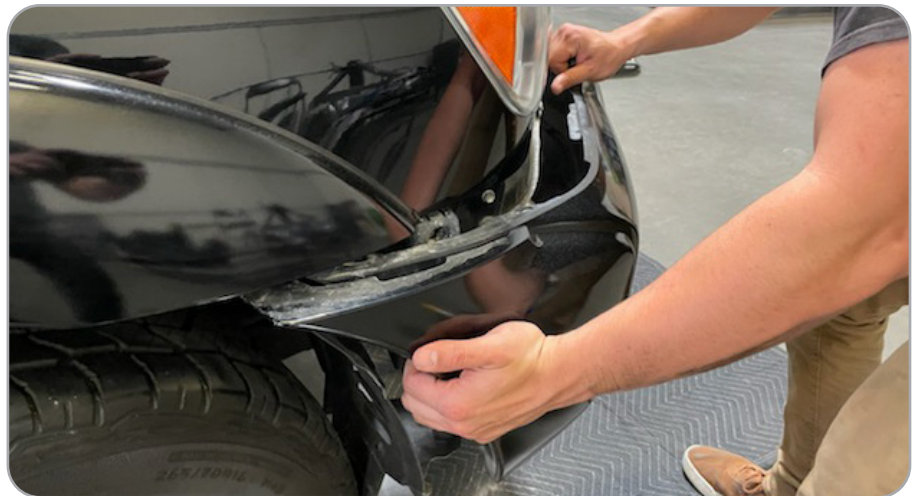
Near the top of the bumper in the wheel well, there is a hidden 10mm bolt that will need to be removed. This is easier with a short extension. Just below the hidden bolt, there is a plastic pin. Pull this straight out to release the pin.



INSTALLATION MANUAL

STEP 7

Pull the side of the bumper out away from the vehicle. There are plastic pins, so a slight pressure will be needed. Once both side are released, you should be able to remove the entire plastic bumper and set it to the side.



STEP 8

Remove the aluminum crash bar by removing the three 14mm nuts on each side. Once all 6 bolts are removed, do not try to pry off the crash bar, or you will damage the threads on the truck.



INSTALLATION MANUAL

STEP 9

Loosen the bolts on the face of the crash bar, this will allow you to easily remove the bar without trouble.



STEP 10

Using a 17mm socket, remove the tow hook (if installed).



STEP 11

On the same cross member, using the 17mm socket, remove the cross member extensions.

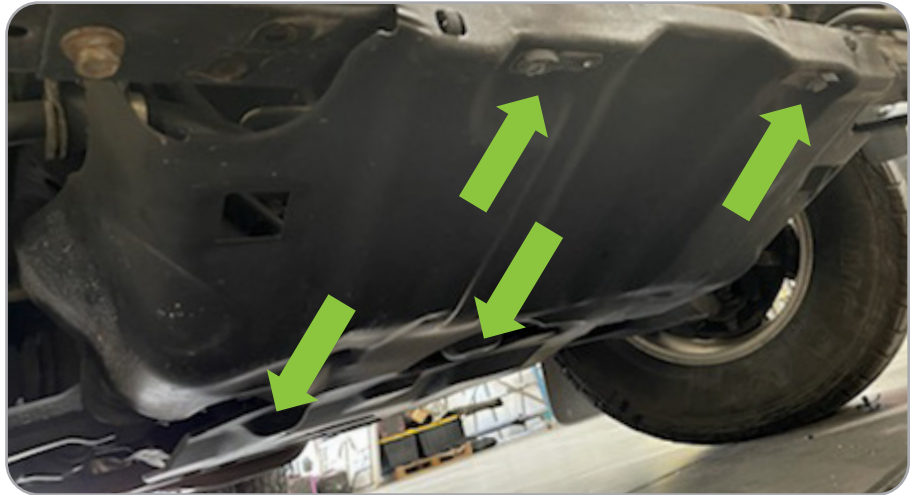
These will not be reused.



INSTALLATION MANUAL

STEP 12

Using a 12mm socket, remove the skid plate with the four bolts shown.



STEP 13

Remove the two supports to mount the skid plate using your 17mm socket.

These will also not be reused.



INSTALLATION MANUAL

STEP 14

Using a 14mm socket, drop the sway bar from the frame by removing the 2 bolts on each "U" bracket. You do not need to completely remove the sway bar.

Your tear down is complete, and now you are ready to start installing your new DV8 bumper.



STEP 15

If you are going to install a winch, install it at this time.

Using the factory 14mm nuts, loosely mount the center section to where the factory crash bar mounted. You will want to leave this very loose since it will need to be able to move around for the remainder of the install.



INSTALLATION MANUAL

STEP 16

Place the lower crossbar cover into place as shown.



STEP 17

The ends of this will go between the frame and the crossbar mounts. Reinstall the factory 14mm bolts loosely



STEP 18

Using the supplied 13mm bolts, washers, and nuts, loosely install the side bolts.

Slightly tighten up the center section bolts so there is still movement in the bumper up and down, but not forward and backwards.



INSTALLATION MANUAL

STEP 19

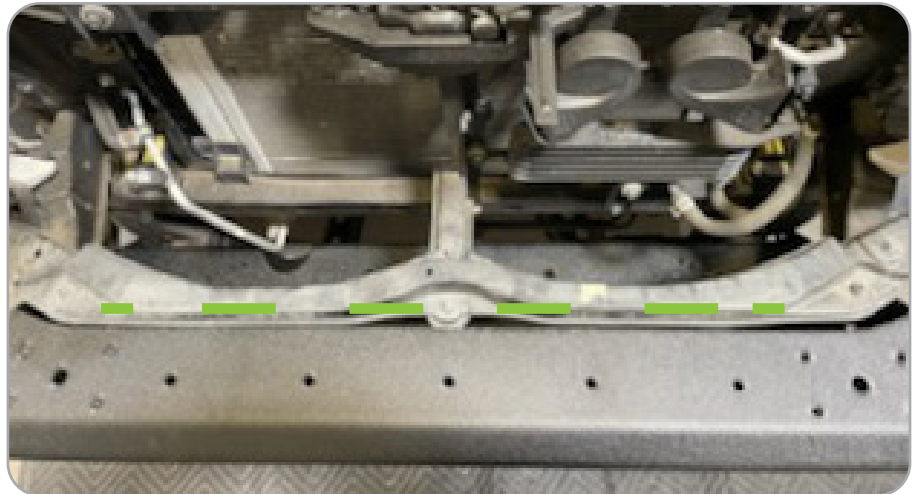
Install your lights (R3.5E16W3W) at this time.

Using the supplied 16mm nuts and washers, install the side wings onto the center section. You can tighten these down, however ensure the face of the wing lines up with the center section during the process.



STEP 20

Using another set of hands, ensure the bumper is straight and aligned to the truck, tighten down the six 14mm nuts on the center section.



INSTALLATION MANUAL

STEP 21

Then tighten the six black 13mm bolts on each side that attaches the center section to the crossbar cover. Tighten the four 14mm sway bar bolts to 37ft. lbs. as specified by factory.



STEP 22

Reinstall the small trim pieces under the headlight by sliding the far t (closest to the tire) into the slot and pushing the green clip into place.



STEP 23

Using the remaining 13mm bolts and small washers, install the bull bar.



INSTALLATION MANUAL

STEP 24

Reinstall the grill. The bottom will not click into place like it did with the factory, however it is secured with the top bolts and clips.



STEP 25

Trimming the inner wheel well can be based on how you would like the inner fender to cover, however for most applications, we recommend trimming here. This will leave factory mounting for the inner fender in place.



STEP 26

You're done!

