



FILTERS
PARTICLE SEPARATOR

INSTALLATION INSTRUCTIONS:
P/N: 76-6000



Thank You! for purchasing your new S&B Filters Helmet Particle Separator. If at any time you need additional assistance with installation or have any other questions or comments, feel free to call our customer support team at 909-947-0015. You can also take advantage of our live chat at www.sbfilters.com and connect with an S&B representative immediately. We hope you enjoy your new S&B Filters product and thank you for your continued support.

BEFORE YOU START

- Please read the entire product guide before proceeding.
- Ensure all components listed on pages 3 are present.
- If you are missing any of the components, call the S&B Customer Support Team at (909) 947-0015.
- Disconnect your battery before doing any electrical modifications.

THREAD LOCKER USE

We have provided a small tube of thread locker in your kit. Whenever you see the symbol above on a step of the instructions apply 1 small drop of the thread locker to the threads of the screws or bolts. This will keep your hardware from vibrating loose during rough driving. If the hardware ever needs to be removed, do so slowly to avoid having the inserts strip out from the plastic.

WARNING: THIS EQUIPMENT SHOULD BE INSTALLED, ADJUSTED, AND SERVICED BY PERSONNEL FAMILIAR WITH THE CONSTRUCTION AND OPERATION OF THIS TYPE OF EQUIPMENT AND THE HAZARDS INVOLVED. FAILURE TO OBSERVE THIS PRECAUTION COULD RESULT IN SEVERE INJURY. READ THIS MANUAL THOROUGHLY AND MAKE SURE YOU UNDERSTAND THE PROCEDURES BEFORE YOU ATTEMPT TO OPERATE THIS EQUIPMENT. THE PURPOSE OF THIS MANUAL IS TO PROVIDE YOU WITH INFORMATION NECESSARY TO SAFELY OPERATE, MAINTAIN, AND TROUBLESHOOT THIS EQUIPMENT. DO NOT USE THIS EQUIPMENT FOR ANY REASON OTHER THAN ITS INTENDED PURPOSE. FAILURE TO FOLLOW THESE INSTRUCTIONS WILL VOID ANY WARRANTY. KEEP THIS MANUAL FOR FUTURE REFERENCE. THE INFORMATION CONTAINED IN THIS MANUAL IS SUBJECT TO CHANGE WITHOUT NOTICE.

Product will intake and expel both air and loose materials with high force and velocity.

- Install product by affixing to the rear upper or rear lower roll bar and ensure the air inlet is not blocked.
- If using product with only one rider, place provided rubber cap over helmet air output port not in use. Failure to do so may result in low pressure and low flow to the port that is in use. It will also lead to possible contamination of the clean air chamber resulting in a greater chance of debris entering the connected helmet.
- Do not place face, hair, extremities, clothing, or other loose material in front of air inlet or outlet during use.
- Install product by affixing to the rear upper or rear lower roll bar to avoid placing hair, extremities, clothing, or other loose material in front of air inlet during use.

Moving parts are sharp and could cause personal injury.

- Keep fan safety cages, blower outlet, and exhaust cover in place while operating and after service.
- Disconnect product from power source before servicing.

Product is designed to filter approximately 99% of solid particulate, such as dirt and dust. No filtration device is 100% effective, and users may still experience distribution of dirt/dust within their helmet. To minimize this experience, ensure connection of the product to user helmet at either of three locations. Directly on the helmet at the top right, top left, or top center ports. Connection of the product to another location on the user helmet may increase the risk of use inhalation or eye exposure to dirt, dust, or other solid particulate matter.

Product is designed for use in conjunction with an ATV's operating manual, and state and federal law.

- Keep your seat belt fastened and wear a helmet while operating the vehicle.

Risk of electric shock!

- Improper installation, maintenance or operation could cause serious injury or property damage.

Periodically check the following:

- the Helmet PS exhaust fan and blower fan making sure they are working properly and blowing out air like when it was new.
- the fasteners of the Helmet PS assembly making sure they are tight and secured.
- the mounting brackets, straps and fasteners making sure they are tight and secured.
- the wire harness for any signs of wear making sure it is secured and away from any hot or moving components.

Important safety information and/or operating instructions for the end user might be included in this installation instruction sheet. Make sure to give the instruction sheet included with this kit to the customer. Verify that the customer has access to all the information required for proper use of the Helmet PS.

RELATED ITEMS FOR YOUR PURCHASE

Order Online today at www.sbfilters.com or through your local S&B distributor.



4' Fresh Air Hose
SKU# HP1607-00



6' Fresh Air Hose
SKU# HP1608-00



8' Fresh Air Hose
SKU# HP1609-00



1.5" Straps
SKU# HP1445-00



1.75" Straps
SKU# HP1393-00



1.85" Straps
SKU# HP1605-00



2" Straps
SKU# HP1446-00



2.5" Straps
SKU# HP1604-00



2.75" Straps
SKU# HP1606-00



1.5" Hose Hanger
SKU# HP1610-00



1.75" Hose Hanger
SKU# HP1611-00



1.85" Hose Hanger
SKU# HP1612-00



2" Hose Hanger
SKU# HP1613-00



2.5" Hose Hanger
SKU# HP1614-00



2.75" Hose Hanger
SKU# HP1615-00

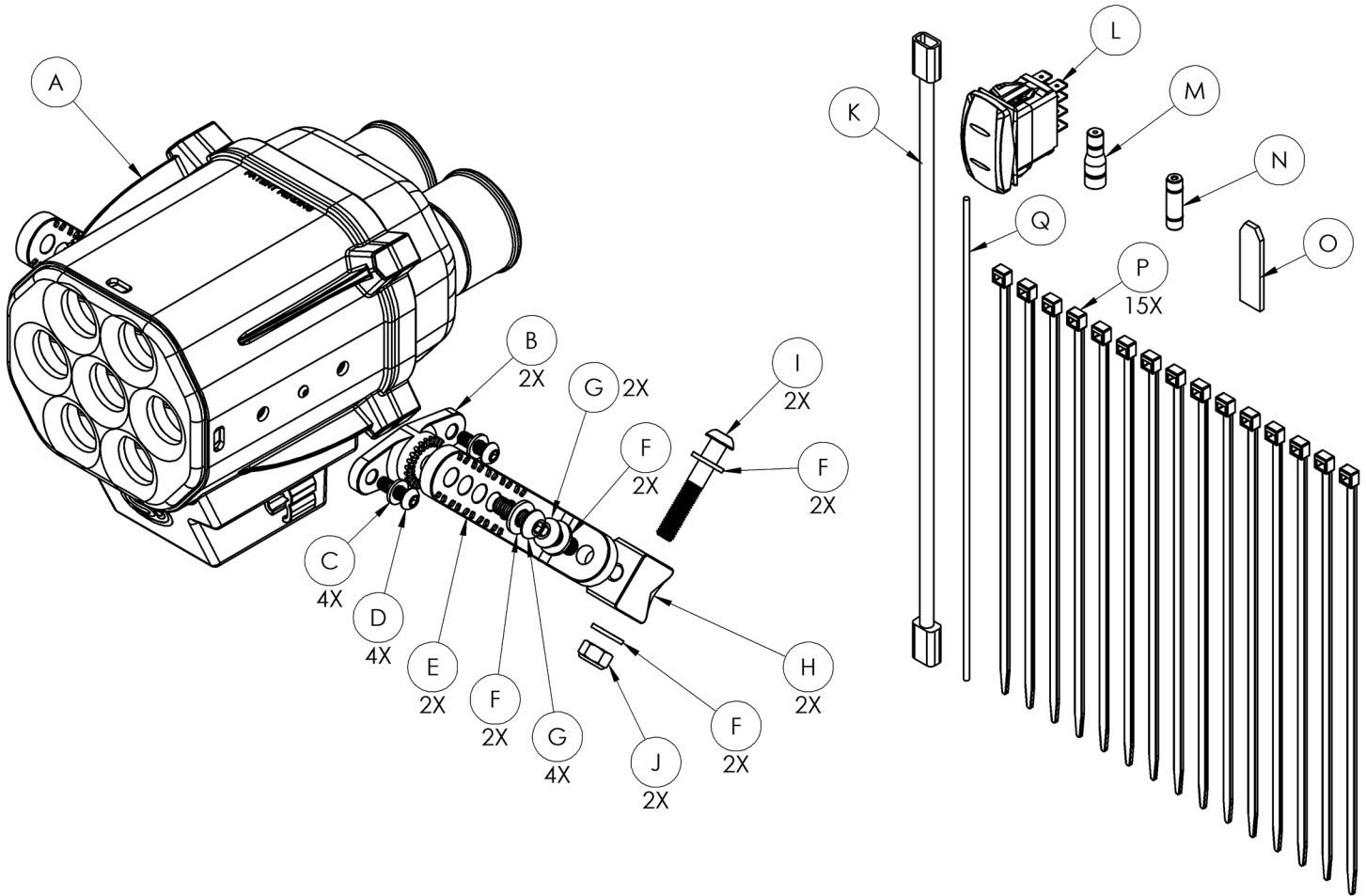


Blower Fan
SKU# AI2098-00



Scavange Fan
SKU# AI2102-00

EXPLODED VIEW:



PARTS LIST: 76-6000

ITEM	QTY	PART NUMBER	DESCRIPTION	HARDWARE PACKS
A	1	AL2008-00	HELMET PARTICLE SEPARATOR ASSEMBLY	HP1603-00
B	2	AI1800-01	ADAPTER	AI1800-01
C	4	AI1416-00	M6 SS FLAT WASHER	AI1781-01
D	4	AI1802-00	M6 X 1.00 X 18 SS SCREW	AI1782-02
E	2	AI1781-01	L-BRACKET	HP1390-01
F	8	AI1740-00	M8 SS FLAT WASHER	AI2111-00
G	4	AI2111-00	M8 X 1.25 X 22 SS SCREW	AI1802-00
H	2	AI1782-02	PIVOT BODY	AI2038-00
I	2	AI2038-00	M8 X 1.25 X 50 SS SCREW	AI1736-00
J	2	AI1736-00	M8 X 1.25 NY-LOCK LOCKING NUT	AI1740-00
K	1	AI2088-00	WIRE HARNESS	AI1416-00
L	1	AI2078-00	ROCKET SWITCH	AI1595-00
M	1	AI1799-00	POSI-TAP	HP1581-00
N	1	AI2004-00	POSI-SEAL	AI2088-00
O	1	AI1595-00	THREADLOCKER	AI2078-00
P	15	AI1750-00	CABLE TIE	AI1799-00
Q	1	AI2141-01	WIRE	AI2004-00
				AI2141-01
				AI1750-00
				HP1582-00
				AM0450-00

AM0450-00 01/22/2019

INSTALLATION STEPS:

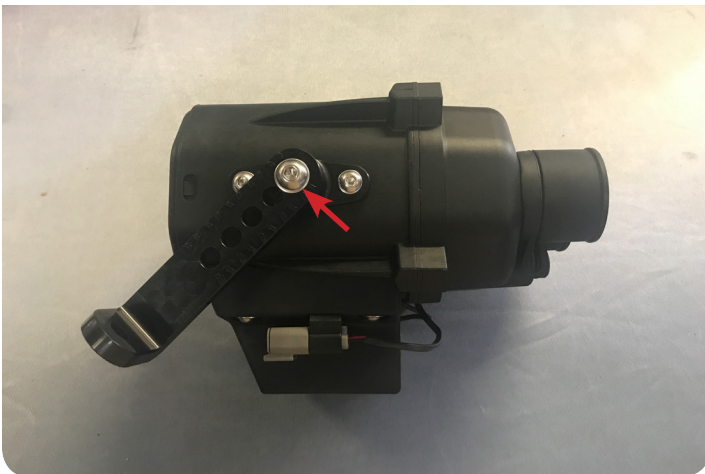
- 1** Determine where you want to mount the Helmet Particle Separator. The intake can face forwards or backwards, but it needs to be mounted horizontally, with the Exhaust Fan pointing straight down. It is recommended to mount the Helmet PS in an orientation where there is less dust entering the vortex separators. Also note the Fan Speed Knob is between the Helmet Ports.



- 2** Install the Adapters (B) onto the Helmet Particle Separator Assembly (A) with the Screws (D), Washers (C), and Thread Locker (O), then tighten. Tool Needed: 4mm Hex Key



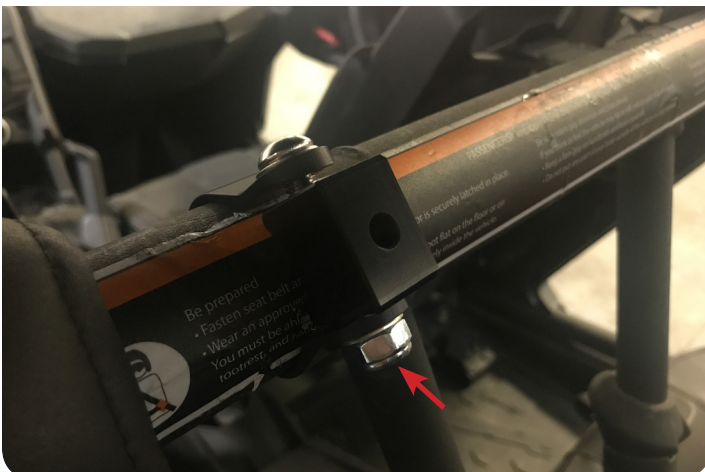
- 3** Install the L Brackets (E) onto the Adapters with the Screws (G), Washers (F), and Thread Locker (O), selecting the proper angle and orientation based on the desired location for the Particle Separator, then tighten. Tool Needed: 5mm Hex Key



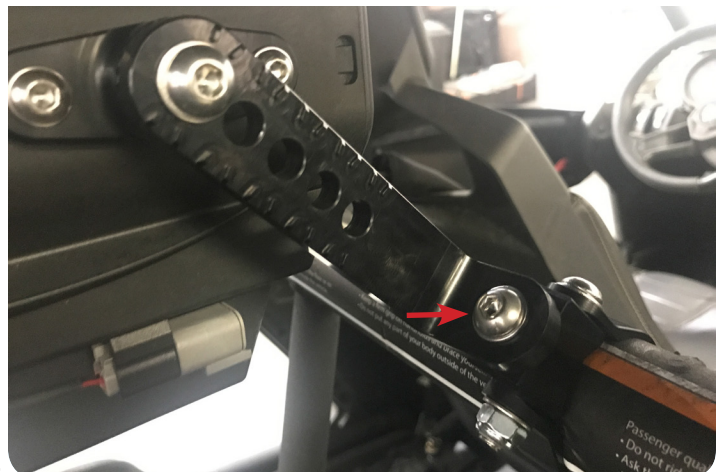
- 4** Slide the Straps (sold separately) over roll cage. Wrapping a small parts bag around the roll cage will make sliding the strap over the roll cage easier and help protect the roll cage from scratches.



- 5** Install the Pivot Bodies (H) with the Screws (I), Washers (F), and Locknuts (J). Snug the straps up, but do not fully tighten, leave the straps loose enough so they can be slid side to side and rotated. Tools Needed: 13mm Wrench, 5mm Hex Key



- 6** Install the L Brackets (E) onto the Pivot Bodies (H) using the Screws (G) and Washers (F), and Thread Locker (O), then tighten. Tool Needed: 5mm Hex Key

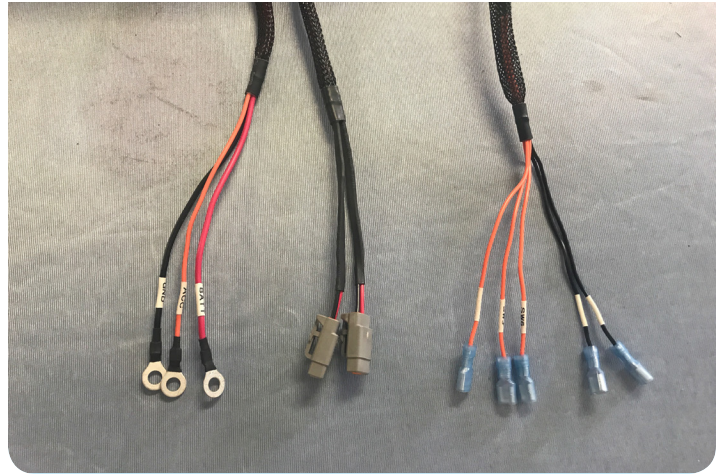


INSTALLATION STEPS:

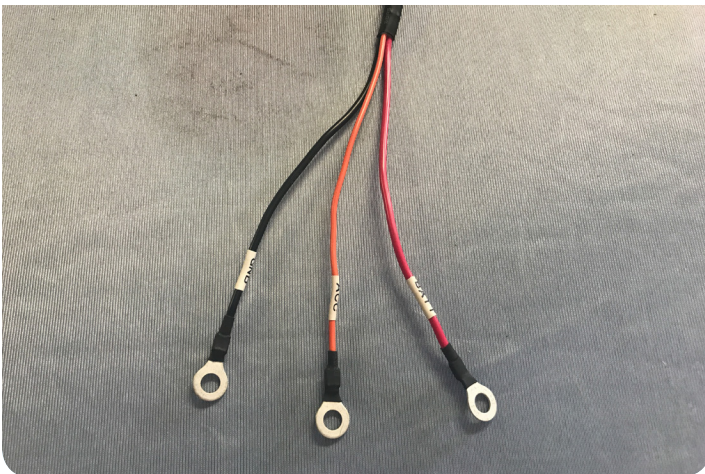
- 7** Once you are satisfied with the position of the Particle Separator, tighten the Straps, double check that all mounting screws and nuts are tight and that they are securely mounting the Particle Separator on the roll cage. Tools Needed: 13mm Wrench, 5mm Hex Key



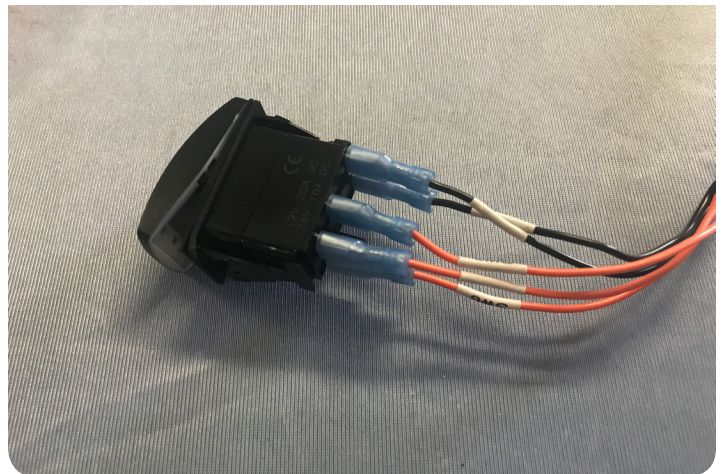
- 8** Familiarize yourself with the Wire Harness (K). It has a red Power Wire (BATT), a black Ground Wire (GND), an orange Accessory Wire (ACC), dual Fan Connectors, and labeled female spade terminals for the supplied Rocker Switch.



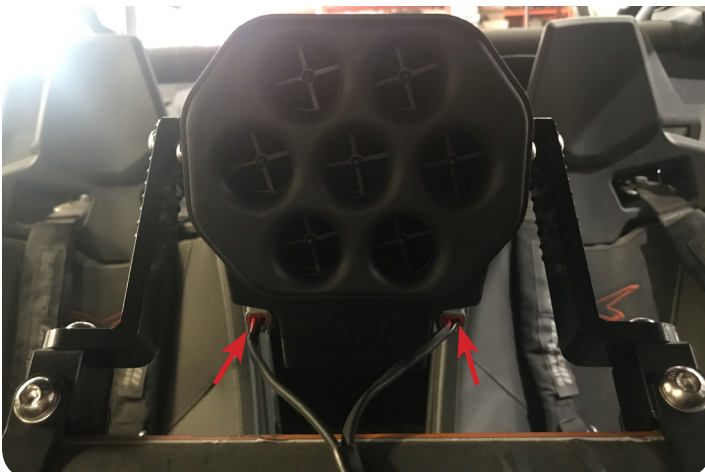
- 9** The Power, Ground, and Accessory Wire go to the corresponding posts of the vehicle buss bar. If you don't have a buss bar, the Power and Ground can go to the battery, and the Accessory wire can go to a keyed power source. Use the Posi-Seal (N) and Wire (O) to extend the ACC wire and use Posi-Tap (M) to connect to the switched power source.



- 10** Cut a 13/16" by 1 7/16" hole in the desired mounting location for the Rocker Switch. Use a file to slowly open up the hole for a precise fit. Plug the female spade terminals into the corresponding male spades on the Toggle Switch. Optional, if you choose to use your own 2 post switch wire #2 & #6 together on one post, and #3 on the other post, then exclude #7 & #8 which are grounds.



- 11** Route the Fan Connectors up to the particle separator and plug them in. There are 2 fans in the Helmet Particle Separator, the scavenge fan that separates the dust, and the blower fan that forces fresh air into your helmet, the connectors are identical.



- 12** Double check to make sure all connectors are plugged in and secured. Turn the ignition and switch on and make sure air is blowing out the blower and exhaust ports of the Particle Separator. If the exhaust fan does not turn on, double check your electrical wiring. Your installation is now complete. Enjoy your new Helmet Particle Separator!

