

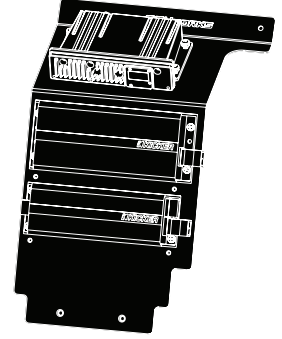
POLARIS® GENERAL®

PHASE 5

POWERSPORTS AUDIO KIT

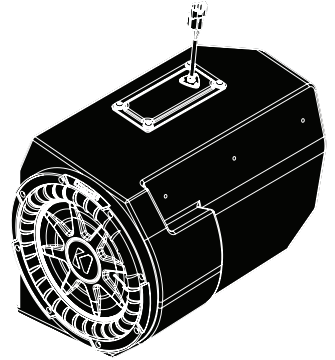
pg 2

Disassembly, Wire and
Amplifier Plate Installation



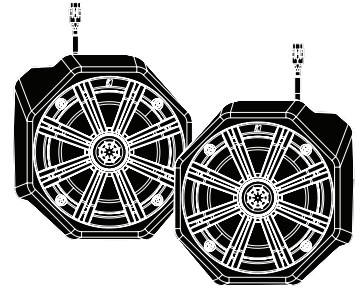
pg 9

Under Dash Subwoofer
Installation



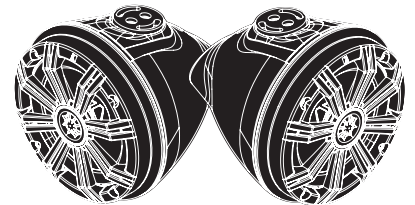
pg 17

Kick Panel Speakers
Installation



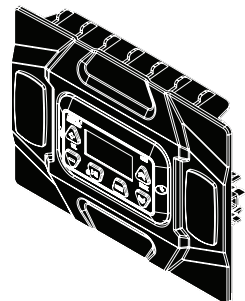
pg 21

Cage Mount Speakers
Installation



pg 25

MRB3 and Dash Kit
Installation





GN-5K

Polaris General
SSV Works 5 Speaker Audio Kit

WARRANTY INFORMATION:

All SSV Works enclosures are covered by a limited lifetime warranty against defects in material or workmanship. All SSV Works Electronics are covered by a limited 1 year warranty against defects in material or workmanship. All SSV Works Speakers are covered by a limited 1 year warranty against defects in material or workmanship. Labor for replacement of defective components is not covered. Contact SSV Works for further warranty information.



Please read and understand these instructions completely before installation to avoid possible injury, or damage to the accessory or vehicle.

TOOLS NEEDED FOR INSTALLATION

- T25, T30 & T40 Torx Driver
- 10mm and 5.5mm Socket & Ratchet or Wrench
- 5mm & 8mm Allen Wrench
- #2 & #3 Phillips Screwdriver
- Drill with 1/8", 1/4" & 1/2" Drill bits
- Panel removal tool
- Scribe or Marker

PARTS LIST IMAGES



1. Direct-fit Amp Plate with pre-tuned Amps and MRB3 Brain



2. Amp Power Wire with Fuse Holder x 2



3. Front B-H1149 Speaker Wire



4. Rear B-H1151 Speaker Expansion



5. M5 Screws & 8mm Nuts x 2



6. M5 Washers x 4



7. Zip Ties x 5

PANELS AND DASH DISASSEMBLY



A. Remove all seats by releasing the handle behind each seat, push forward slightly while lifting up.



B. Disconnect the negative battery cable from the battery.



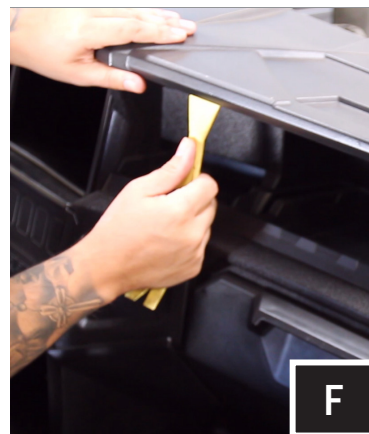
C. Remove hood by turning locking pins and lifting up.



D. Start to remove dash by removing the six (6) push pins under the hood.

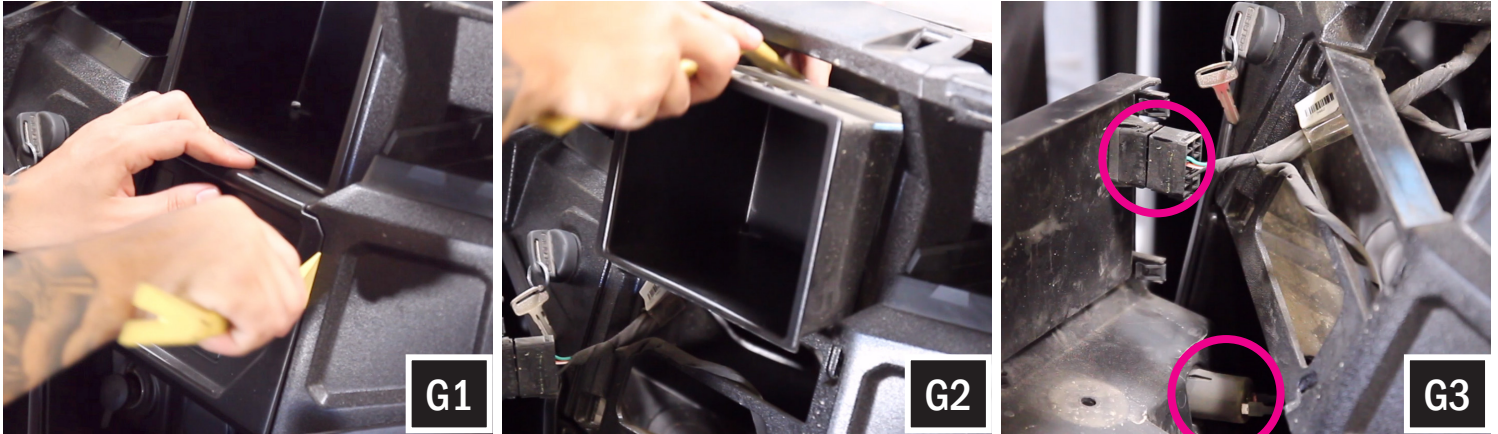


E. Remove top push pins as well as the lower T30 Screw (this will allow for easy removal of top dash panel).

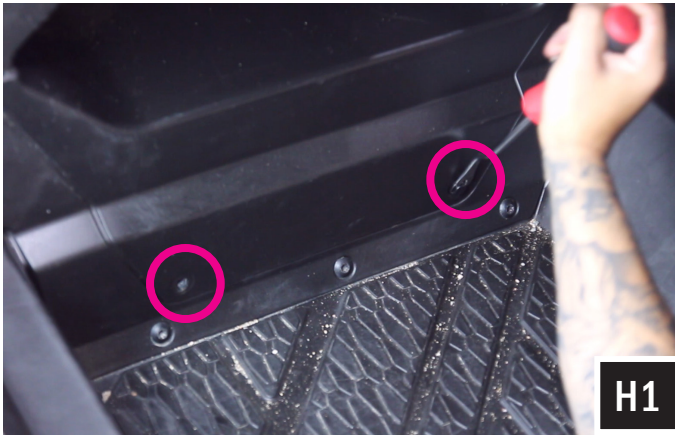


F. Use a panel removal tool to release the top of the dash. Lift up and completely remove the top of the dash panel.

PANELS AND DASH DISASSEMBLY



G. Use a panel removal tool to remove the center dash panel and center pocket. Disconnect all harness connectors attached to the center dash panel.



H1. Using a panel removal tool, remove the two (2) push pins holding lower center panel cover located on the passenger side. Slide cover off.



I1. Take out the rear center console pocket by using a panel removal tool and remove the two (2) push pins.



I2. Once pins have been removed, pull up the pocket carefully. Disconnect the harness attached to the 12v accessory socket.

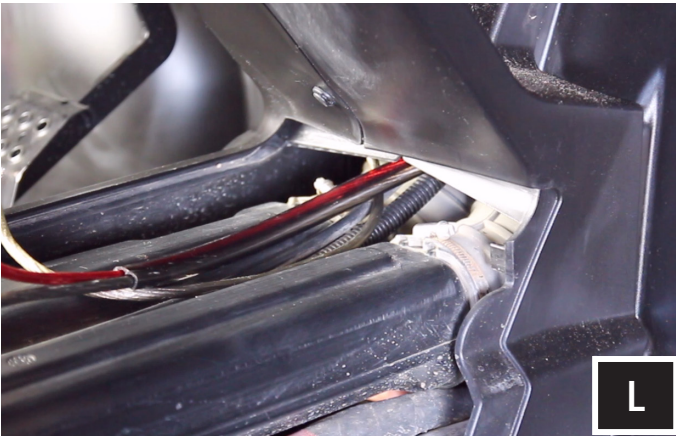
RUNNING AMP POWER CABLE & SPEAKER WIRE



J. Unplug the rubber grommet located on the firewall.



K. Unwrap the tape from rubber grommet and feed the power/ground wire for the Amp through the grommet as well as the rear speaker harness H1151.



L. Feed power/ground and H1150 harness down towards the center console until you get the wires to the inside of the vehicle.



M. Follow the air ducts and factory wiring and feed cables towards the back. (use provided zip ties to secure cables to factory wiring, away from the drive shaft).

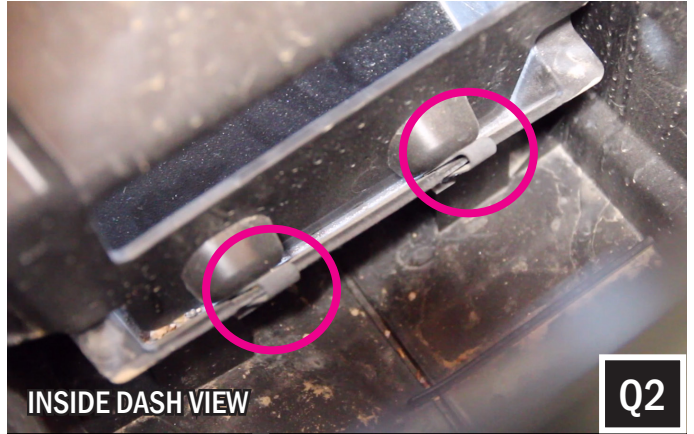
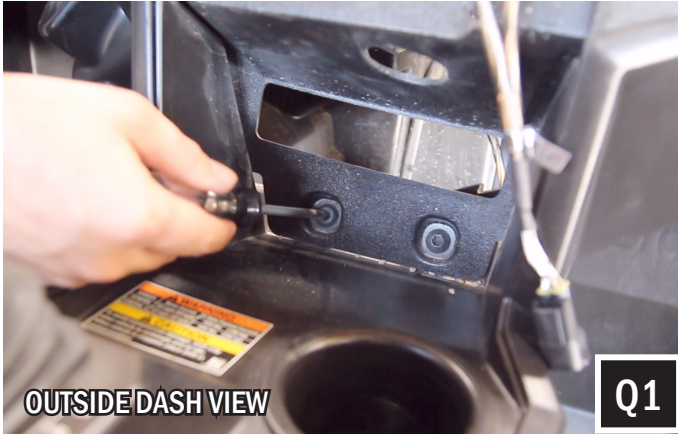


O. Route the H1149 harness towards the driver and passenger side of the dash.



P. Feed each side of the H1149 harness down through the open cavity on top of the dash towards the driver and passenger footwell.

AMP PLATE INSTALLATION



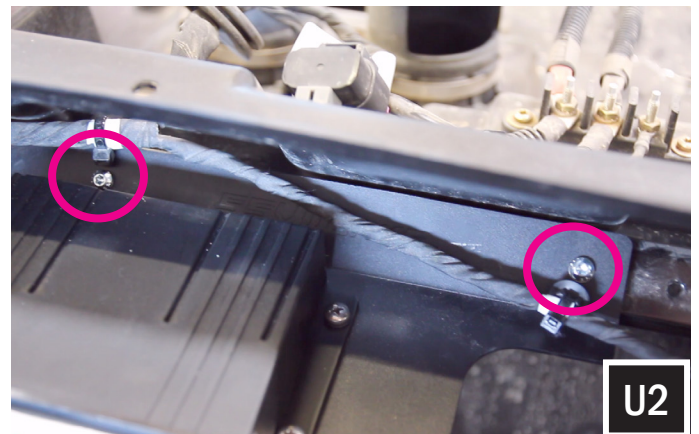
Q. Remove the two (2) T30 torx screws and clips located at the bottom of the dash panel near the center console



L. Unclip harness that runs along top cross bar of dash (holes will be used to mount amp and sub plate).



T. Insert the loaded amp plate into the center of the dash from the top.



U. Once amp plate is laying flat on the cross bar use two (2) M5 Screws and M5 washers pass through the top holes. From underneath use two (2) washers and two (2) M5 nuts and secure the Amp plate down into position. (you will need 8mm socket and T25 torx screwdriver) .



Polaris General 10" Under Dash Enclosure

WARRANTY INFORMATION:

All SSV Works enclosures are covered by a limited lifetime warranty against defects in material or workmanship. All SSV Works Electronics are covered by a limited 1 year warranty against defects in material or workmanship. All Kicker Speakers are covered by a limited 1 year warranty against defects in material or workmanship. All Kicker Amplifiers are covered by a limited 2 year warranty against defects in material or workmanship. Labor for replacement of defective components is not covered. Contact SSV Works for further warranty information.





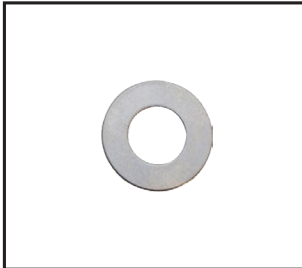

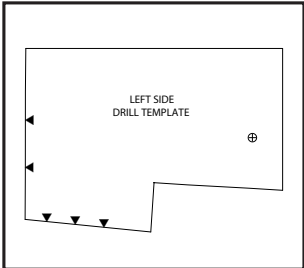
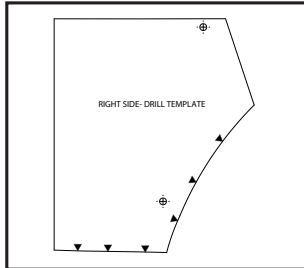


Please read and understand these instructions completely before installation to avoid possible injury, or damage to the accessory or vehicle.

TOOLS NEEDED FOR INSTALLATION

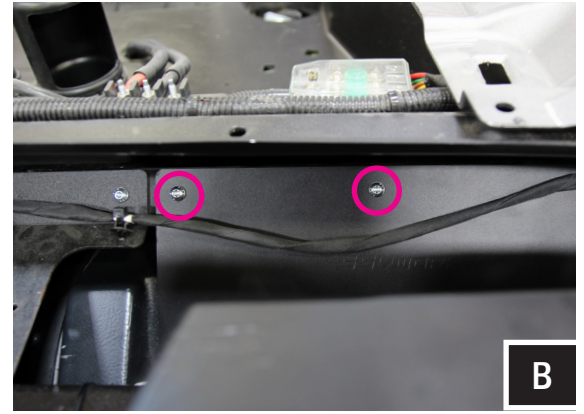
- T-25 and T-30 Torx Driver
- 8mm Socket
- Drill with 1/4" Drill bit
- Scribe or Punch tool

PARTS LIST IMAGES

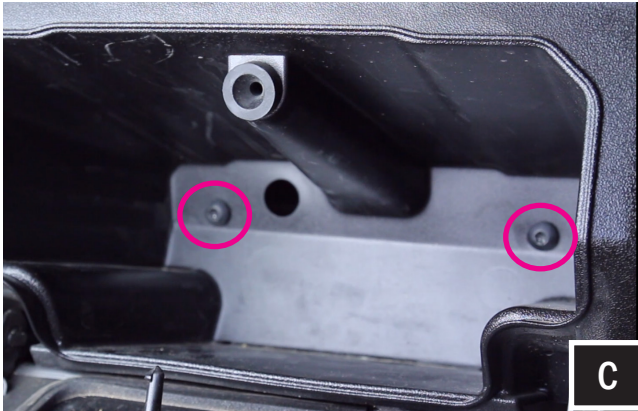
			
1. GN-UD10 Enclosure	2. M6 x 16mm Screws x 8	3. M6 Washers x 8	4. M5 Screws & 8mm Nuts x 2
			
5. M5 Washers x 4	6. Subwoofer Mounting Plate	7. Left Side Drill Template	8. Right Side Drill Template



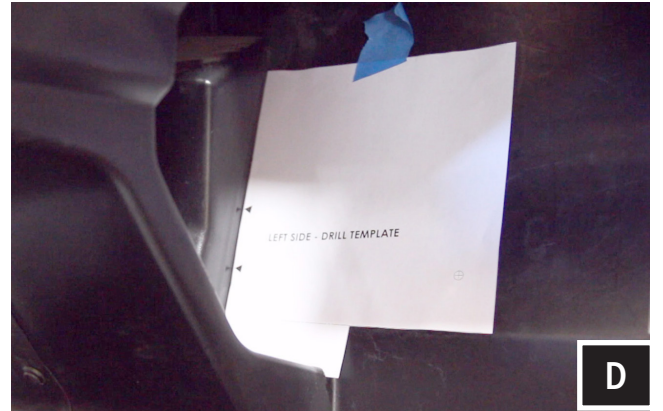
A. For this step you will need the sub enclosure mounting plate as well as two (2) M5 screws, two (2) 8mm nuts and four (4) M5 washers. Place the mounting plate on the factory dash cross member bar behind the glovebox. Match up the holes from the plate and the bar to insert the M5 screws and washers from top. Use the 8mm nuts and washers to fasten from underneath.



B. Using a T25 torx driver and 8mm socket, tighten the screws to secure the plate.



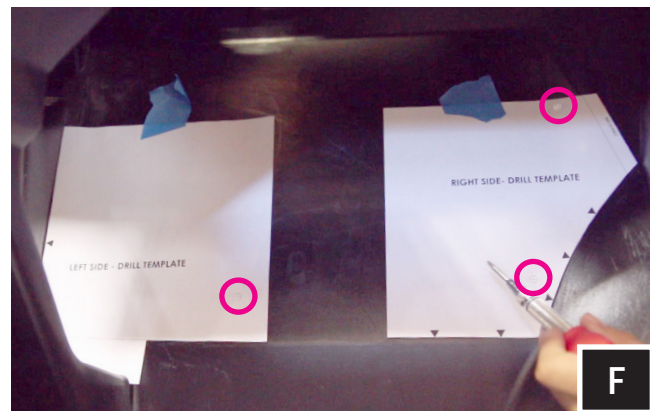
C. Remove the two (2) bolts on the inside of the glovebox and replace with two (2) M6 screws and washers.



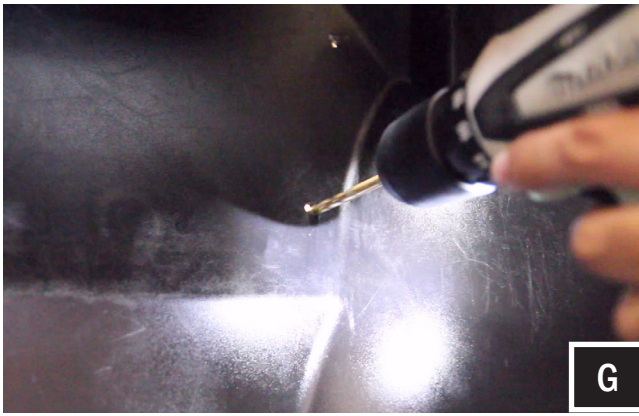
D. Cut out the LEFT template along the cut line. Position the template on the firewall behind the center dash from the passenger footwell making sure to line up arrows on the template to the edges of the panel as seen on image D.



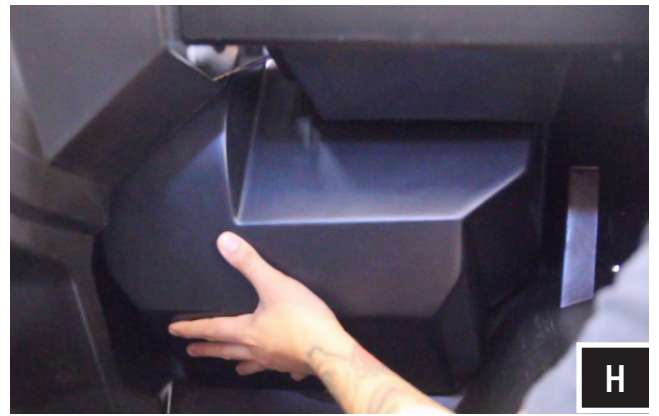
E. Cut out the RIGHT template along the cut line. Position the template on kick panel in the passenger footwell above the foot rest making sure to line up arrows on template to the curves of the panel as seen on image E.



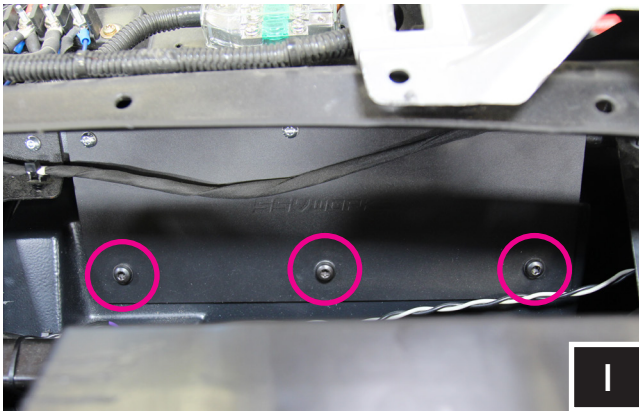
F. Using a scribing tool, mark the center of the three (3) drill points illustrated on the template as shown on image F.



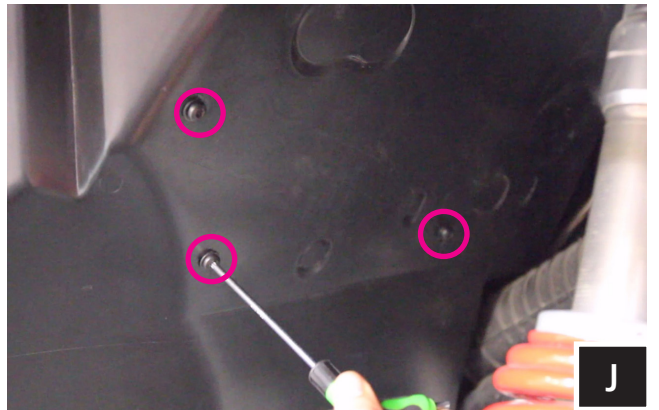
G. Using a 1/4 drill bit, drill holes for mounting of the enclosure.



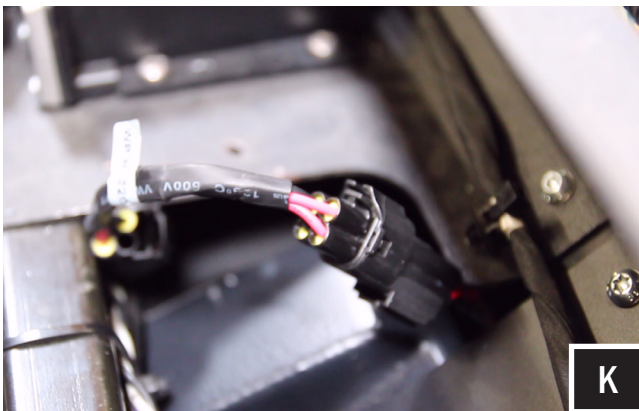
H. Place enclosure in location for mounting.



I. Line up the holes from the enclosure to the mounting plate and use three (3) M6 screws and washers to mount the enclosure. Once all M6 screws have been hand tightened, go back and tighten all screws with T30 torx driver.

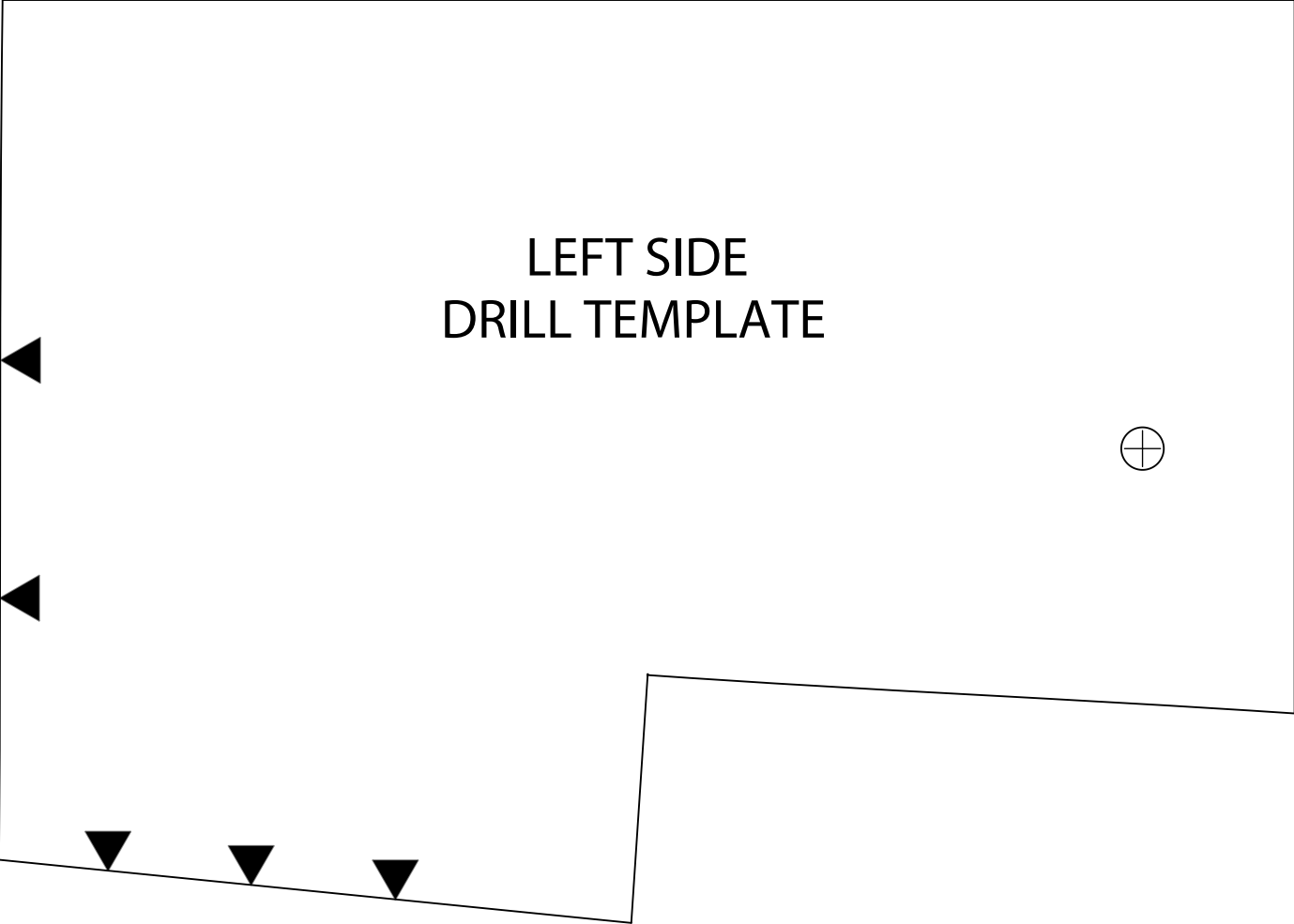


J. Use three (3) M6 screws & washers to hand tighten the enclosure from behind the firewall. Once all M6 screws have been hand tightened, go back and tighten all screws with T30 torx driver.

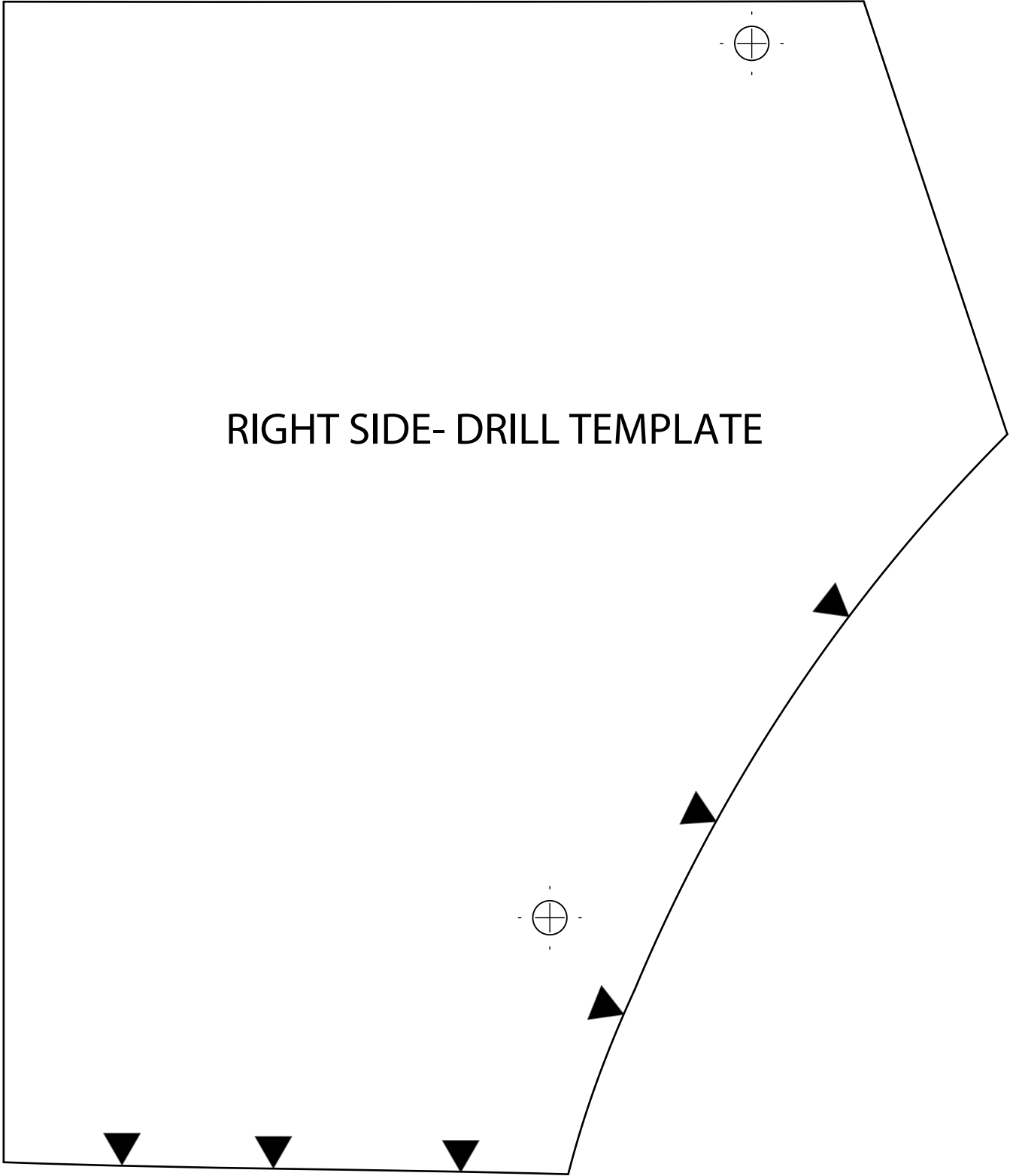


K. Route the speaker wire away from any moving parts and sharp metal, then connect to the amplifier.

LEFT SIDE
DRILL TEMPLATE



RIGHT SIDE- DRILL TEMPLATE





Polaris General 6.5" Speaker Front Kick Panels

WARRANTY INFORMATION:

All SSV Works enclosures are covered by a limited lifetime warranty against defects in material or workmanship. All SSV Works Electronics are covered by a limited 1 year warranty against defects in material or workmanship. All Kicker Speakers are covered by a limited 1 year warranty against defects in material or workmanship. All Kicker Amplifiers are covered by a limited 2 year warranty against defects in material or workmanship. Labor for replacement of defective components is not covered. Contact SSV Works for further warranty information.



Please read and understand these instructions completely before installation to avoid possible injury, or damage to the accessory or vehicle.

TOOLS NEEDED FOR INSTALLATION

- T-30 Torx Driver

- Drill with 1/4" Drill bit

- Scribe or Punch tool

PARTS LIST IMAGES



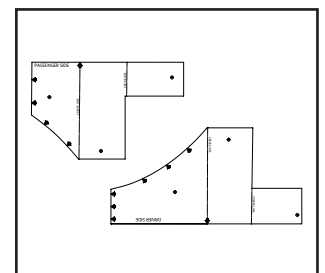
1. GN-F65 Enclosures
(1 pair)



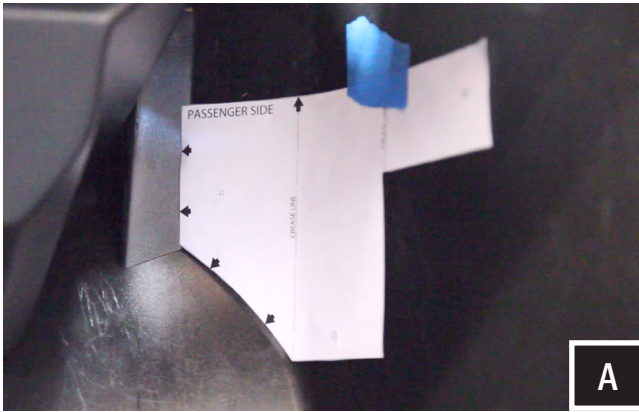
2. M6 x 16mm Screws x 6



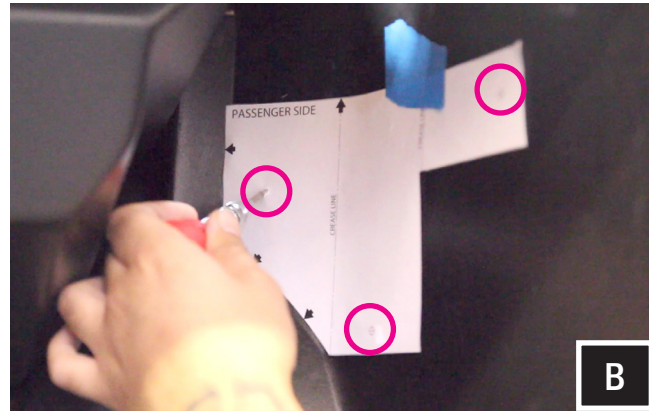
3. M6 Washers x 6



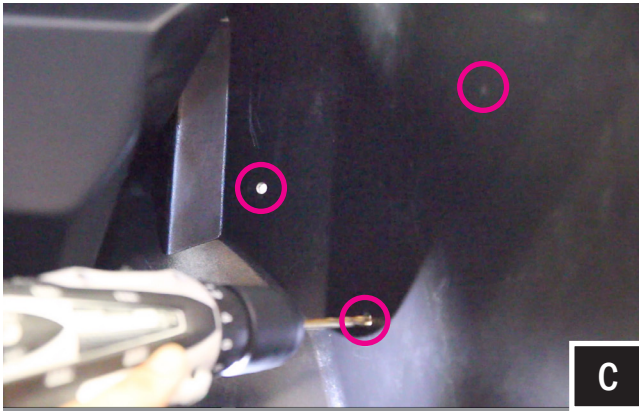
4. Drill Template



A. Cut out the INSIDE template (Driver/Passenger) along the cut line. Position the template on kick panel above the foot rest making sure to line up arrows on template to the curves of the panel as seen on image A.



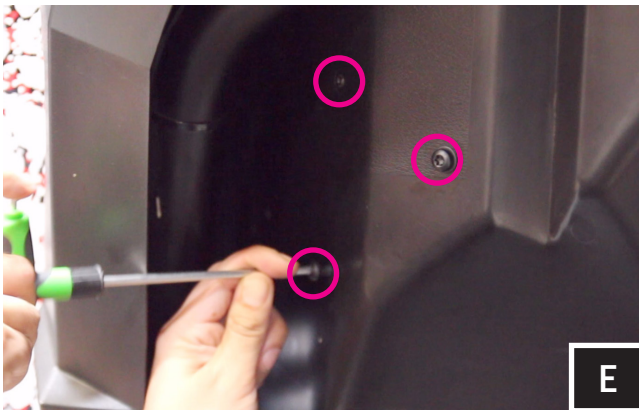
B. Using a scribing tool, mark the center of the 3 drill points illustrated on the template as shown on image B.



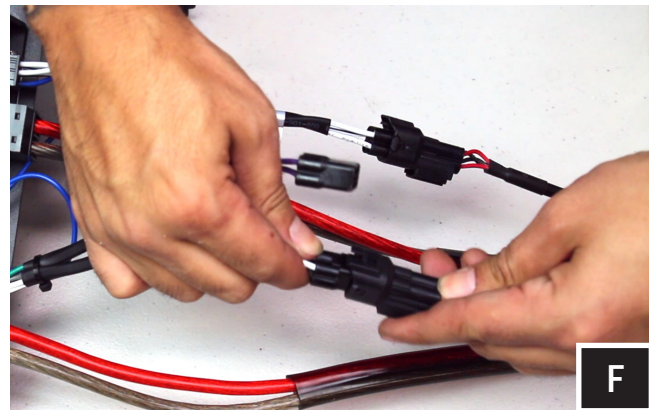
C. Using a 1/4 drill bit, drill holes for mounting of kick Pods .



D. Place enclosure in location for mounting.



E. Use the provided M6 screws and washers and loosely tighten the pod in place through the drilled holes. Once all screws have been loosely installed, tighten down by hand.



F. Route the speaker wire away from any moving parts and any sharp metal, then connect to the amplifier.



Polaris General 6.5" Speaker Cage Mount Pods

WARRANTY INFORMATION:

All SSV Works enclosures are covered by a limited lifetime warranty against defects in material or workmanship. All SSV Works Electronics are covered by a limited 1 year warranty against defects in material or workmanship. All SSV Works Speakers are covered by a limited 1 year warranty against defects in material or workmanship. Labor for replacement of defective components is not covered. Contact SSV Works for further warranty information.



Please read and understand these instructions completely before installation to avoid possible injury, or damage to the accessory or vehicle.

TOOLS NEEDED FOR INSTALLATION

- 8mm Open End Wrench

- 4mm Allen Wrench

PARTS LIST IMAGES



1. US-C65 Enclosures
(1 pair)



2. Cage Bar Clamp x 2



3. Rear B-H1150 Harness



4. M6 Hex Head Bolt x 4



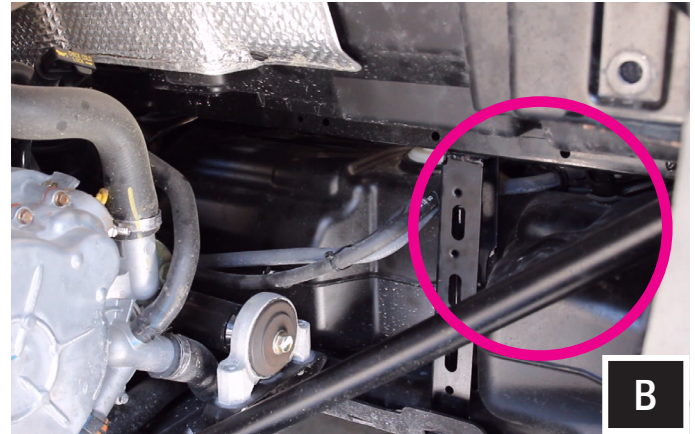
5. M6 Washer x 4



6. M6 Set Screws x 4



A. From the rear of the center console, connect the B-H1150 harness and route to the rear driver and passenger side from under the console.



B. Make sure the speaker wire is away from any moving and sharp parts, pull cable out from under the center console.



C. Remove push clip on the rear panel to allow the running of the speaker harness up the driver and passenger cage bar to connect to the speakers.



D. Find the best orientation for the speaker on your bar and screw in the Set Screws in the OPPOSITE holes of where the clamp will install into using a 4mm allen wrench



E. Loosely install the clamp base to the cage mount pod with the two (2) 8 mm head bolts and washers, place the cage mount pod in the desired mounting location on the vehicle.



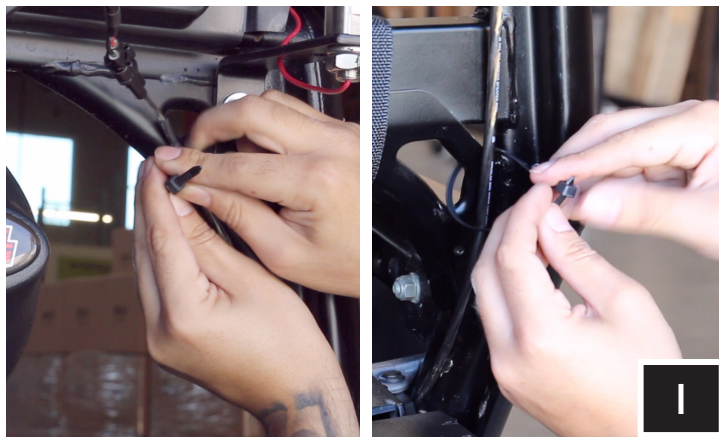
F. Using a T5 hex key tighten clamp until it secures to cage.



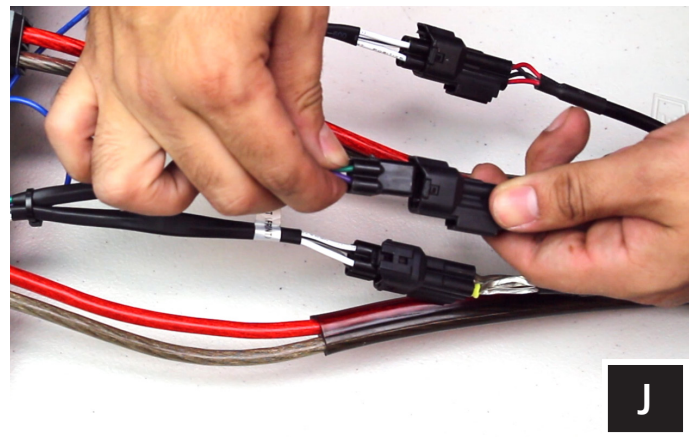
G. Tighten the 8mm bolts once you have the speaker pods in your desired location.



H. Make your speaker connections.



I. Using the provided zip ties tie down speaker wire alongside the roll cage.



J. Connect the B-H1151 speaker harness to the amplifier



Polaris General MRB3 Dash Panel

WARRANTY INFORMATION:

All SSV Works enclosures are covered by a limited lifetime warranty against defects in material or workmanship. All SSV Works Electronics are covered by a limited 1 year warranty against defects in material or workmanship. All SSV Works Speakers are covered by a limited 1 year warranty against defects in material or workmanship. Labor for replacement of defective components is not covered. Contact SSV Works for further warranty information.



Please read and understand these instructions completely before installation to avoid possible injury, or damage to the accessory or vehicle.

TOOLS NEEDED FOR INSTALLATION

- #2 Phillips Screwdriver

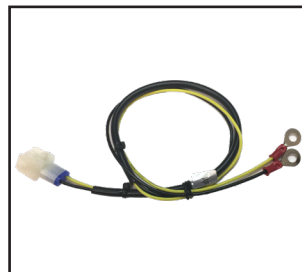
PARTS LIST IMAGES



1. MRB3 Dash Panel



2. MRB3 Bluetooth
Media Player



3. MRB3 Power & Ground
Connector



A

A. With a #2 Phillips screw driver, secure the MRB3 controller to the dash kit with the 2 screws supplied in the MRB3 box.



B

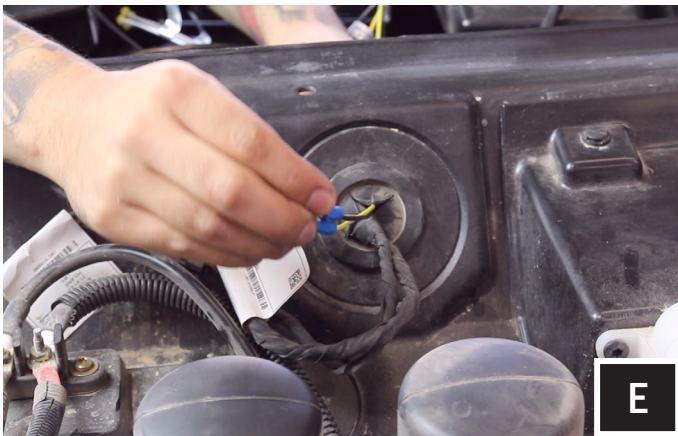
B. Connect MRB3 controller to the MRB3 Brain and secure cables.



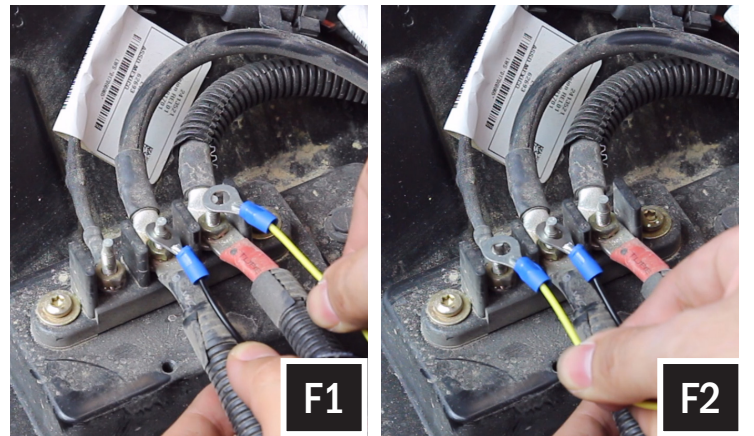
C. Place the bottom edge of the kit on dash.



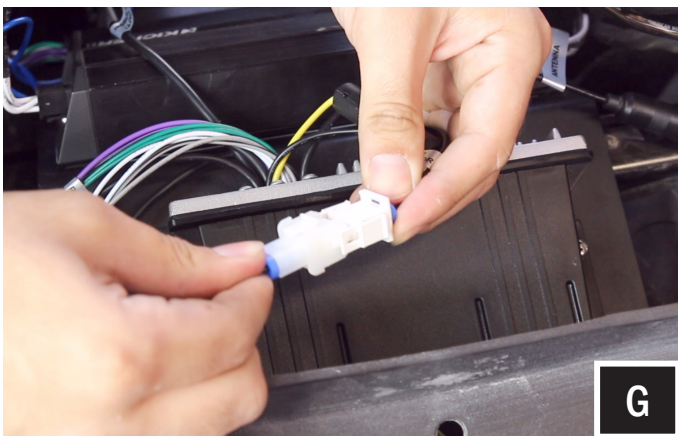
D. With both thumbs press the top corners until the kit snaps into place.



E. Pull the MRB3 Power and Ground wires through the Rubber grommet and feed through to the power strip located on the right side of the vehicle.



F. At the Bus Bar terminal located under the hood, unscrew the nut on the second position terminal and attach the black Ground wire. Refasten the nut. Then connect the yellow Power wire to either the constant terminal (F1) or the accessory terminal (F2). Refasten the nut.



G. Make the connection to MRB3 Brain.



Polaris General USB/AUX Input Port



A. Unscrew and remove the plastic nut from the port. Make sure to open the fuse holder and remove the fuse so the nut will fit through it. Crimp on the provided ring terminals on the ends of the (Red) Power and (Black) Ground wire.



B. Make sure all harness connectors are unplugged from the dash panel. Push out the factory 12v port.



C. Feed in the wires and cable through the factory 12v hole. Keep the fuse holder open and empty until it has passed through the hole.



D. Feed the plastic nut back through the wires and cables and screw back on to the port. Hand tighten only. Replace fuse and close fuse holder.

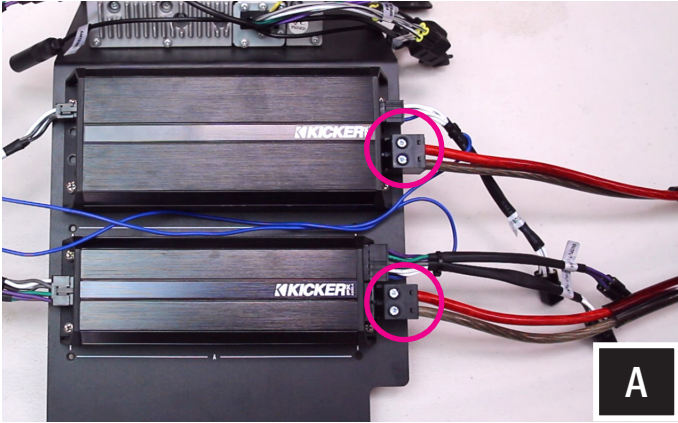


E. Connect the AUX-in connector to the MRB3 brain



G. Run the (RED) Power and (BLACK) Ground wire of the USB/Aux input port to the Bus Bar. Unscrew the nut on the first position terminal (accessory) and attach the (RED) Power wire. Refasten the nut. Then unscrew the nut on the second position terminal and attach the (BLACK) Ground wire. Refasten the nut.

CONNECTING POWER & GROUND CABLE TO BATTERY



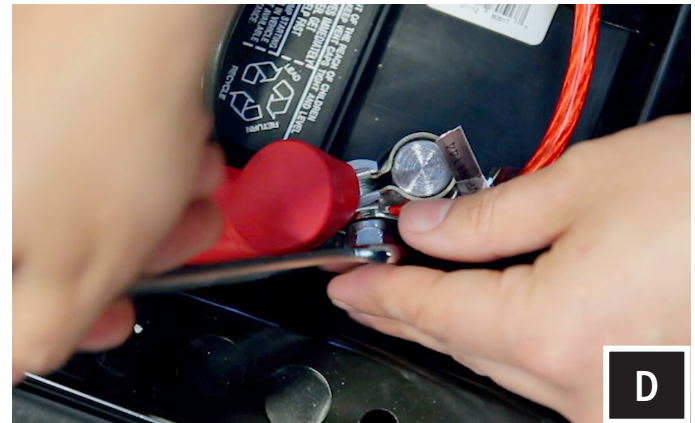
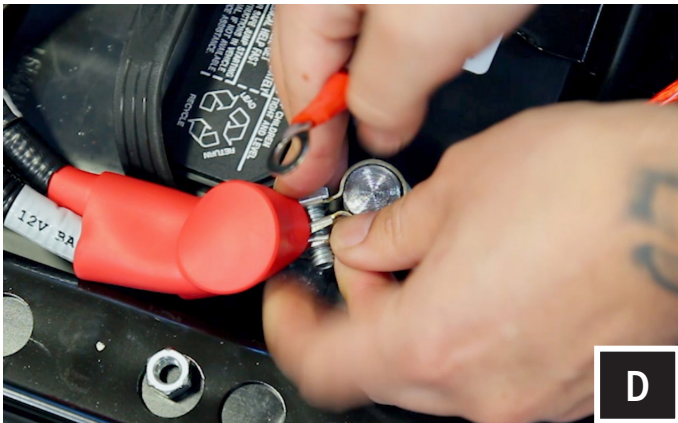
A. Connect both power cables to both amplifiers.



B. Zip tie all cables to the factory cabling along the center column away from the drive shaft.



C. (If you have decided to disconnect the negative terminal as suggested earlier). Reconnect the negative battery cable. Remove the nut and connect the two ground cables. Reinstall nut and tighten.



D. Unscrew the factory nut on the positive battery terminal. Install the 2 power cables to the screw on the positive battery terminal. Re-install the factory nut.

THIS CONCLUDES THE INSTALLATION PROCESS. REPLACE ALL FACTORY PANELS AND SEATS. QUESTIONS? PLEASE CONTACT SSV WORKS AT 818-991-1778 OR EMAIL SUPPORT@SSVWORKS.COM