



#59074 Ford 03-07 6.0L Super Duty Diesel Radiator  
#59274 Ford 03-07 6.0L Super Duty Diesel Radiator/Fan Combo  
#59275 Ford 03-07 6.0L Super Duty Diesel Radiator/Fan Combo Without VSC

Fits MOST Ford 6.0L Super Duty Diesels, 2003-2007  
(Note: Automatic transmissions may require auxiliary oil cooler part # 41124RV. Vehicle models may vary; review the instructions and components for compatibility with your vehicle prior to installation.)

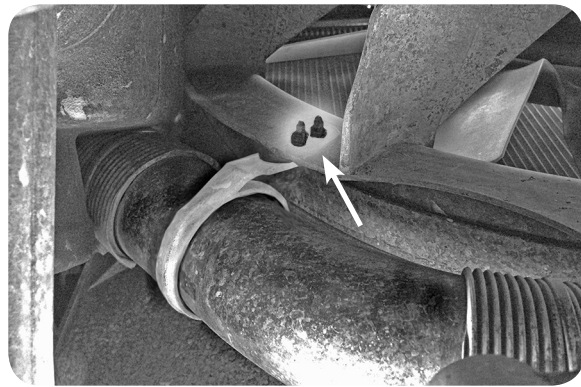


Fig. 2

5. Remove/cut the taped t-shaped push clips on the positive (+) battery cable.
6. Use included insulated metal clamps to attach battery cable to T-bolts. Secure with 1/4"-20 lock nuts. (Fig. 3)
7. Attach upper hose and overflow hose to radiator.
8. Attach lower radiator hose.
9. Rotate mounting strap 180° and push both tree clips into mounting holes on Flex-a-Lite aluminum fan shroud.
10. Fill radiator through overflow bottle with factory recommended coolant.

1



Scan here with your smartphone to see a step-by-step install video or type <http://youtu.be/T3dsdh0CEfw> into your favorite browser

### Remove Front Shroud Assembly and Radiator

1. Make sure engine is cool.
2. Disconnect negative (-) battery cable from battery.
3. Drain radiator coolant.
4. Undo 4 ea. 5/16" bolts from brackets holding top posts of radiator and remove.
5. Remove 4 tree clips holding plastic panel around hood latch to radiator.
6. Remove tree clips holding positive (+) battery cable to front radiator support.

7. Remove clip straps holding positive (+) battery cable to radiator on both sides. (Fig. 1)
8. Move positive (+) battery cable out of the way of radiator.
9. Remove top radiator and overflow hoses.
10. Below vehicle, disconnect mounting strap tree clip from radiator shroud. (Fig. 2)
11. Remove 2 ea. 5/16" bolts holding top of shroud to top of radiator.



Fig. 1

12. Pull top of radiator toward grille and lift front section of shroud.

**NOTE: The bottom of this shroud piece has a rubber flap that may need to be lifted out of the way to move front section of shroud up and out.**

13. Unplug clutch fan connector at the top of the rear shroud section closest to engine.
14. Remove lower radiator hose and transmission lines if applicable.
15. Remove radiator by lifting straight up and out of the vehicle.

2

### Remove Stock Fan and Rear Shroud Assembly

1. Remove 4 ea. 15MM bolts holding rear shroud to the engine.
2. Pull rear shroud forward to access the nut attaching the clutch fan.
3. Secure the clutch fan pulley with a pry bar and loosen nut with a large adjustable wrench.
4. Remove the rear shroud and clutch fan assembly at the same time from the engine compartment.

3

### Install New Flex-a-Fit® Radiator

1. Lower radiator into engine bay. Align radiator posts with lower radiator support mounts.
2. Place 2 ea. T-bolts in the second T-channel from the engine. Line T-bolt up with the factory top mounting bracket location.
3. Thread included aluminum posts onto T-Bolts and tighten with a 9/16" wrench.
4. Place 3 ea. T-bolts into topmost T-channel on front of radiator facing grille. Attach top mounting brackets, leaving a 1/8" gap between the radiator tank and the core support.

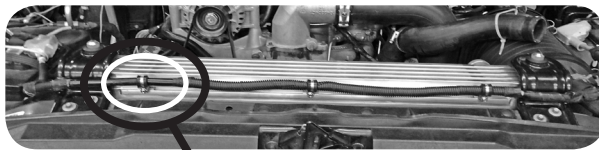
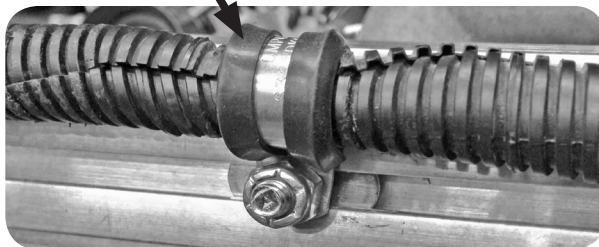


Fig. 3



4

### Mount and Install Clutch Fan Emulator

1. Mount emulator facing down on bracket #51313 with supplied screws.
2. Bolt bracket to factory mounting location near windshield. (Fig. 4)
3. Plug emulator directly into factory fan clutch socket. **DO NOT CONNECT ANYTHING INTO THE EMULATOR BESIDES THE FACTORY FAN CLUTCH SOCKET**

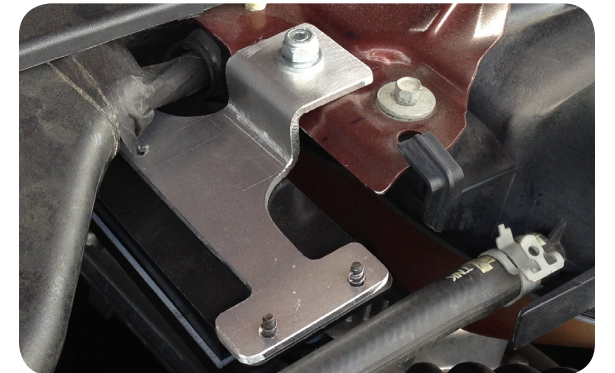


Fig. 4

