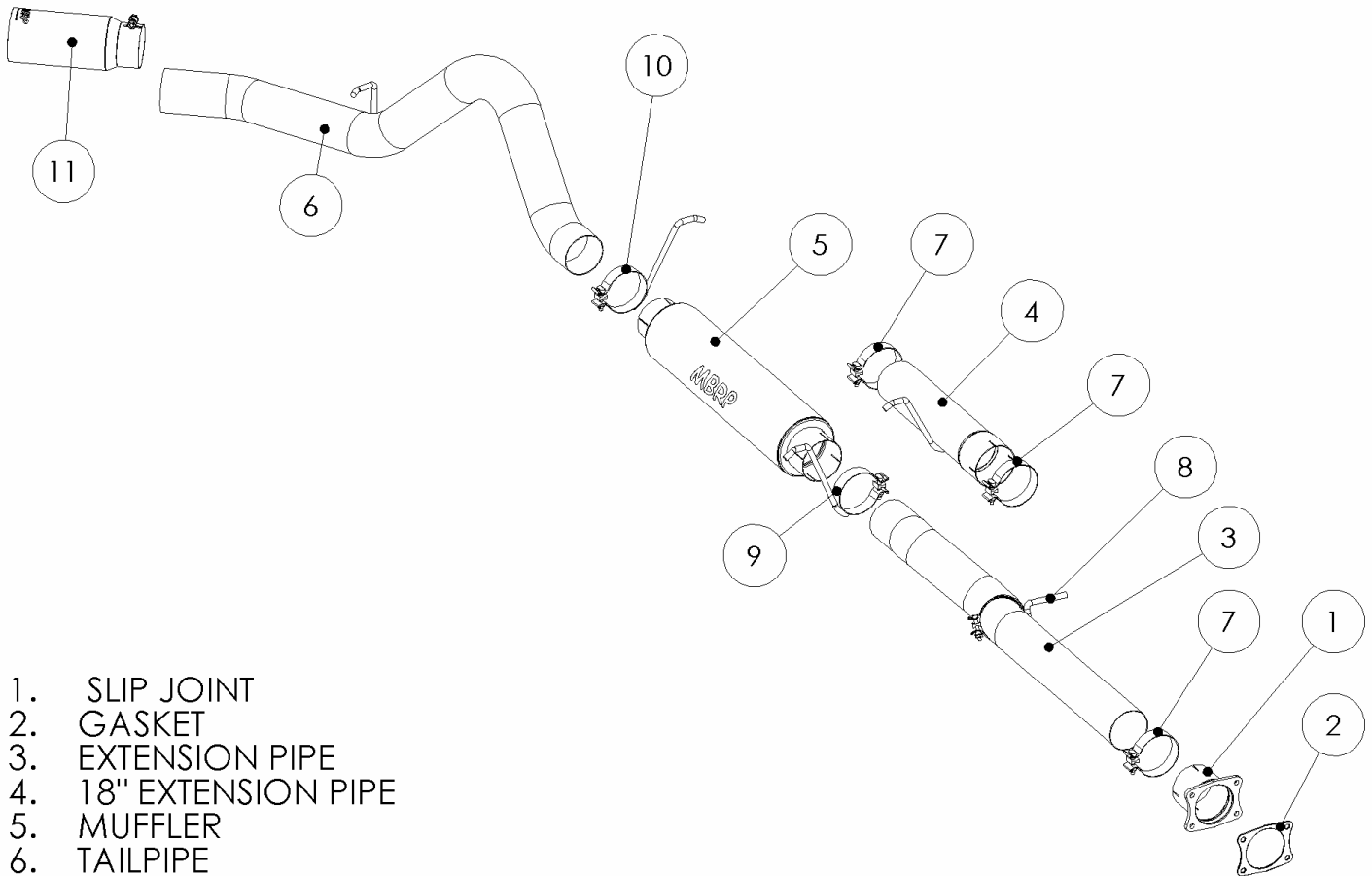


S6000

**01-05 DURAMAX FRONT PIPE BACK 4"
SINGLE**

MBRP
INC.

PERFORMANCE EXHAUST



1. SLIP JOINT
2. GASKET
3. EXTENSION PIPE
4. 18" EXTENSION PIPE
5. MUFFLER
6. TAILPIPE
7. 4" BAND CLAMP [ALUMINIZED SYSTEM USES SADDLE CLAMPS]
8. 4" HANGER CLAMP
9. 4" HANGER CLAMP
10. 4" HANGER CLAMP
11. STAINLESS STEEL TIP.

PLEASE READ BEFORE STARTING INSTALATION

While MBRP Inc. has made every effort to ensure that all components of this system are of superior quality and properly packaged it is the installer's responsibility to ensure the following before removal of the factory exhaust:

- that ALL components shown above are present.
- that ALL mating components fit together.
- that there are no damaged components.
- that the system you have purchased is appropriate for your vehicle year, model and configuration.
- that the system will not interfere with any modifications previously installed or planned.
- that you have read and understand these instructions.

If you have any questions or are uncertain about any aspect of the installation of this system to your vehicle please contact your dealer before commencing installation.

Installation Instructions for Systems; S6000304, S6000409, S6000AL

01-05 Chev/GMC 6.6L Duramax Diesel Extended Cab Short & Long Bed Crew Cab Short & Long Bed

Removal of Stock System:

1. Apply a penetrating lubricant liberally to all exhaust fasteners, hangers and rubber insulators.

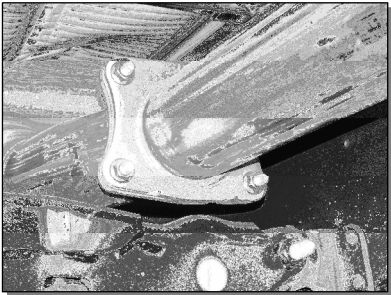


Figure 1

2. Using a 15mm socket or wrench, disconnect the factory exhaust system at the four bolt flange located behind the catalytic converter. If the vehicle is not equipped with a catalytic converter disconnect the four bolt flange located approximately under the passenger side seat. Refer to Figure 1. **Do not discard these nuts as they are required for the installation.**
3. Remove the exhaust system from the rubber insulators and remove from under the vehicle. If a hoist is not available for use, it may be necessary to cut the tail pipe behind the muffler for removal of the system.

Installation of MBRP Inc. Performance Exhaust:

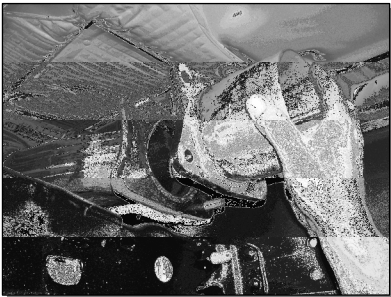


Figure 2

1. Place the **Gasket** provided over the studs located on the factory four bolt flange. Attach the **Slip Joint** to the four bolt flange using the existing hardware. Refer to Figure 2.

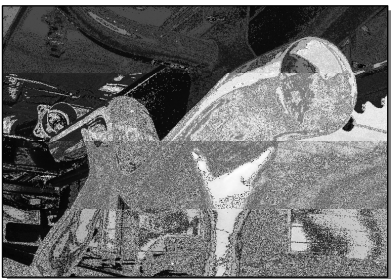


Figure 3

2. Install the **Extension Pipe** into the **Slip Joint** placing the bend around, under the cross member. Rotate the pipe to position the bend towards the driveshaft. The **Extension Pipe** does not require cutting to fit Crew Cab trucks. For extended cab trucks, approximately 9½" needs to be cut off the end with the longest straight section of pipe. (**Installation tip:** Temporarily hang the **Muffler** and the **Passenger Side Tail Pipe** in place and measure to the four bolt flange to verify the length required).



Figure 4

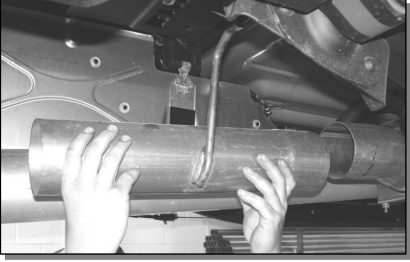


Figure 5



Figure 6



Figure 8

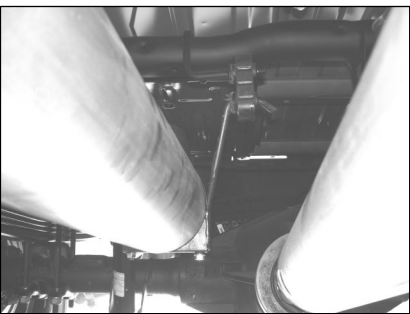


Figure 9

3. Position **Extension Pipe** as shown and loosely install the **Hanger Clamp** with the shortest hanger. Refer to Figure 4. This will support the **Extension Pipe** during the **Muffler** installation.

4. Crew cab & extended cab long bed trucks require the use of the **18" Extension Pipe** provided. This is to be positioned between the **Muffler** and the **Extension Pipe**. Refer to Figure 5. The **18" Extension Pipe** is not required with short box trucks.

5. Install the **Muffler** onto the **Extension Pipe**. Refer to Figure 6.

Refer to Figure 7 for the proper direction of air flow through the **Muffler**.

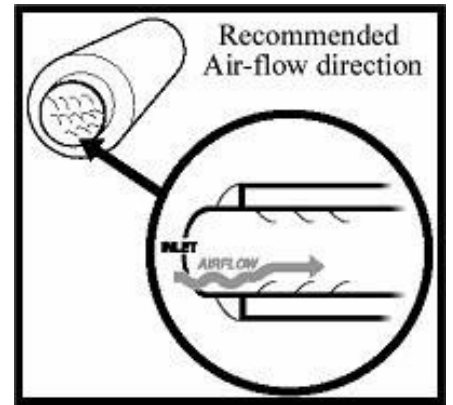


Figure 7

6. Install the **Tail Pipe** from the rear of the truck, over the axle and attach to the **Muffler Outlet**. Install the tail pipe hanger into the OEM hanger, adjust for best axle clearance and **Tail Pipe** exit location to complete. Refer to Figure 8.

7. Install the **Hanger clamp** with the longest hanger at the connection between the **Muffler** and the **Tail Pipe** and into the OEM rubber hanger at this position. Refer to Figure 9.

10. Install provided clamps around pipes where needed. Adjust tail pipes and check along the whole length of the exhaust system to ensure that there is adequate clearance around the spare tire, fuel and brake lines or any wiring. If any interference is detected relocate or adjust.
11. Make sure the exhaust is in place before tightening clamps. Start at the front of the exhaust system and begin tightening all connections.
12. Install and adjust **Tip** to suit. Using a 17mm wrench tighten lock bolt located on **Tip**.



“PRO SERIES” exhaust shown.

Congratulations! You are ready to begin enjoying the improved performance and driving experience of your MBRP Inc. performance exhaust system. We hope you enjoy your purchase.