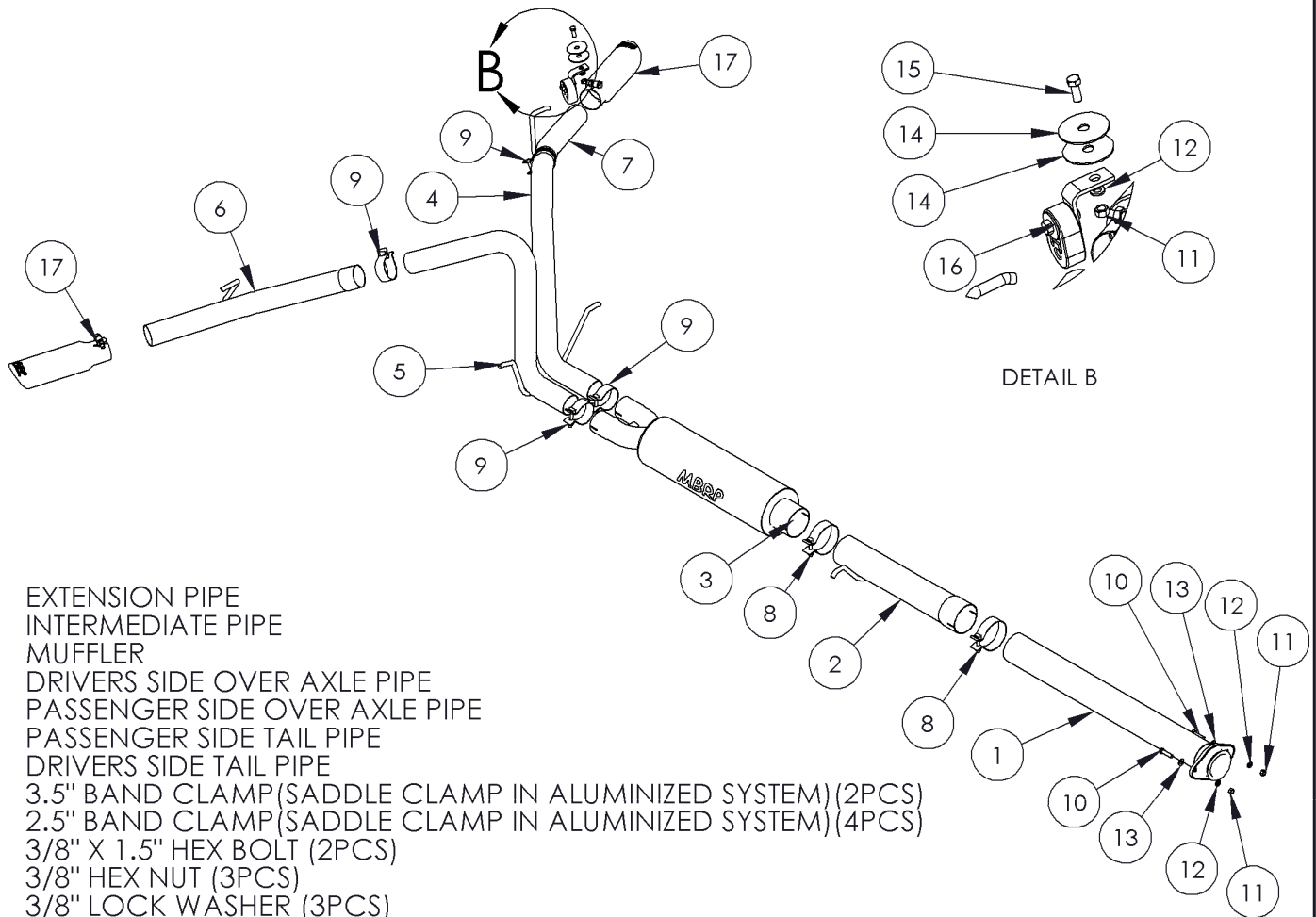


# S5038

2007-2008 CHEV/GMC 1500 (Next Generation) EXTENDED CAB 5.5' OR 6.5' BED/ CREW CAB, 4.8L, 5.3L & 6.0L



**PERFORMANCE EXHAUST**



1. EXTENSION PIPE
2. INTERMEDIATE PIPE
3. MUFFLER
4. DRIVERS SIDE OVER AXLE PIPE
5. PASSENGER SIDE OVER AXLE PIPE
6. PASSENGER SIDE TAIL PIPE
7. DRIVERS SIDE TAIL PIPE
8. 3.5" BAND CLAMP (SADDLE CLAMP IN ALUMINIZED SYSTEM) (2PCS)
9. 2.5" BAND CLAMP (SADDLE CLAMP IN ALUMINIZED SYSTEM) (4PCS)
10. 3/8" X 1.5" HEX BOLT (2PCS)
11. 3/8" HEX NUT (3PCS)
12. 3/8" LOCK WASHER (3PCS)
13. 3/8" FLAT WASHER (2PCS)
14. 7/16" FENDER WASHER (2PCS)
15. 3/8" X 1" HEX BOLT
16. HANGER ASSEMBLY
17. EXHAUST TIP (2PCS)

## PLEASE READ BEFORE STARTING INSTALATION

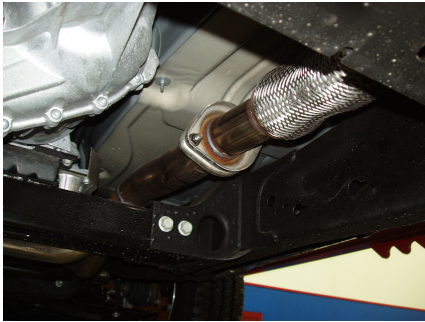
While MBRP Inc. has made every effort to ensure that all components of this system are of superior quality and properly packaged, it is the installer's responsibility to ensure the following before removal of the factory exhaust:

- that ALL components shown above are present.
- that ALL mating components fit together.
- that there are no damaged components.
- that the system you have purchased is appropriate for your vehicle year, model and configuration.
- that the system will not interfere with any modifications previously installed or planned.
- that you have read and understand these instructions.

If you have any questions or are uncertain about any aspect of the installation of this system to your vehicle please contact your dealer before commencing installation.

**07-08 Chev./GMC Silverado/Sierra 1500**  
**(Next Generation)**  
**Extended Cab 5.5" and 6.5" Bed, Crew**  
**Cab, 4.8L, 5.3L & 6.0L**

**Removal of Stock System**



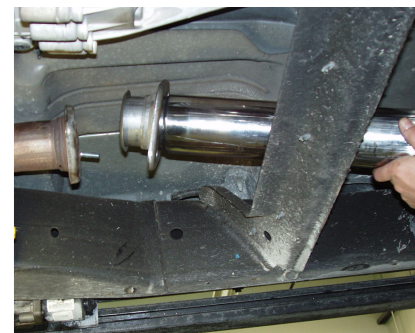
**Figure 1**



**Figure 2**



**Figure 3**



**Figure 4**

1. Apply a penetrating lubricant liberally to all exhaust fasteners, hangers and rubber insulators.
2. Remove the nuts from the studs holding the front flange and disconnect exhaust system. **Refer to Figure 1.**
3. Remove the hangers from the rubber insulators and remove the exhaust from the vehicle. The tail pipe will need to be cut to clear the rear axle. **Refer to Figure 2.**
4. Remove the hangers from the rubber insulators and remove the exhaust from the vehicle. **Refer to Figure 3.**
5. Remove the studs located on the exhaust flange. **Refer to Figure 1.**

**Installation of MBRP Inc. Performance Exhaust**

1. Install the **Extension Pipe** to the existing flange using the fasteners provided. Leave the hardware loose enough for some adjustment. Note on the Extended cab short bed (5'8") the **Extension Pipe** will need to be trimmed 9.5". **Refer to Figure 4.**

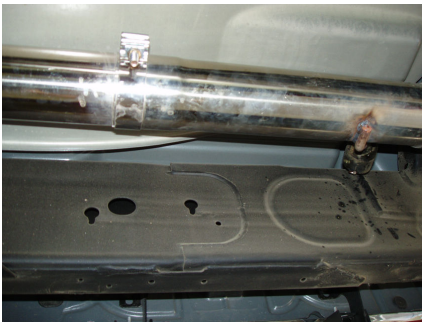


Figure 5

2. Slide a **3.5" Band Clamp** over the **Extension Pipe** and install the **Intermediate Pipe** onto the **Extension Pipe**. Attach the **Intermediate Pipe** to the factory rubber insulator. Refer to **Figure 5**.



Figure 6

3. Slide a **3.5" Band Clamp** over the inlet side of the **Muffler** and install to the **Intermediate Pipe**. Leave the **3.5" Band Clamp** loose enough for some adjustment. Refer to **Figure 6**.



Figure 7

4. Slide a **2.5" Band Clamp** onto the **Passenger Side Over Axle Pipe** and slide onto the passenger side of the **Muffler**. Attach the hanger to the factory rubber insulator.

5. Slide a **2.5" Band Clamp** onto the **Driver Side Over Axle Pipe** and slide onto the driver side of the **Muffler**. Attach the hanger to the factory rubber insulator. Refer to **Figure 7**.



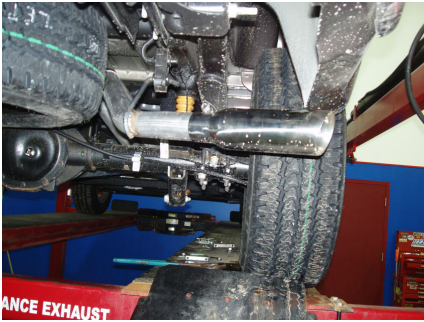
Figure 8

6. Slide **Driver Side Tail Pipe** hanger into rearmost rubber insulator and reattach the frame. Slide a **2.5" Band Clamp** onto the **Driver Side Tail Pipe** then attach to the **Driver Side Over Axle Pipe**. Refer to **Figure 8**.

7. Slide a **2.5" Band Clamp** onto the **Passenger Side Tail Pipe** then attach to the **Passenger Side Over Axle Pipe**. Using fasteners provided attach the **Hanger Assembly** to the bottom of the frame. Refer to **Figure 9**.



Figure 9



**Figure 10**

8. Install and adjust the **Exhaust Tips** to suit. Using a 17mm wrench tighten the lock bolt located on the **Exhaust Tip**. Refer to **Figure 10**.

9. Align the exhaust as required. Starting at the front of the exhaust, tighten all clamps and connections.

10. Check along the whole length of the exhaust system to ensure that there is adequate clearance around the spare tire, fuel and brake lines or any wiring. If any interference is detected relocate or adjust.



**Congratulations!** You are ready to begin experiencing the improved power, sound and driving experience of your MBRP Inc. performance exhaust system. We hope you enjoy your purchase.