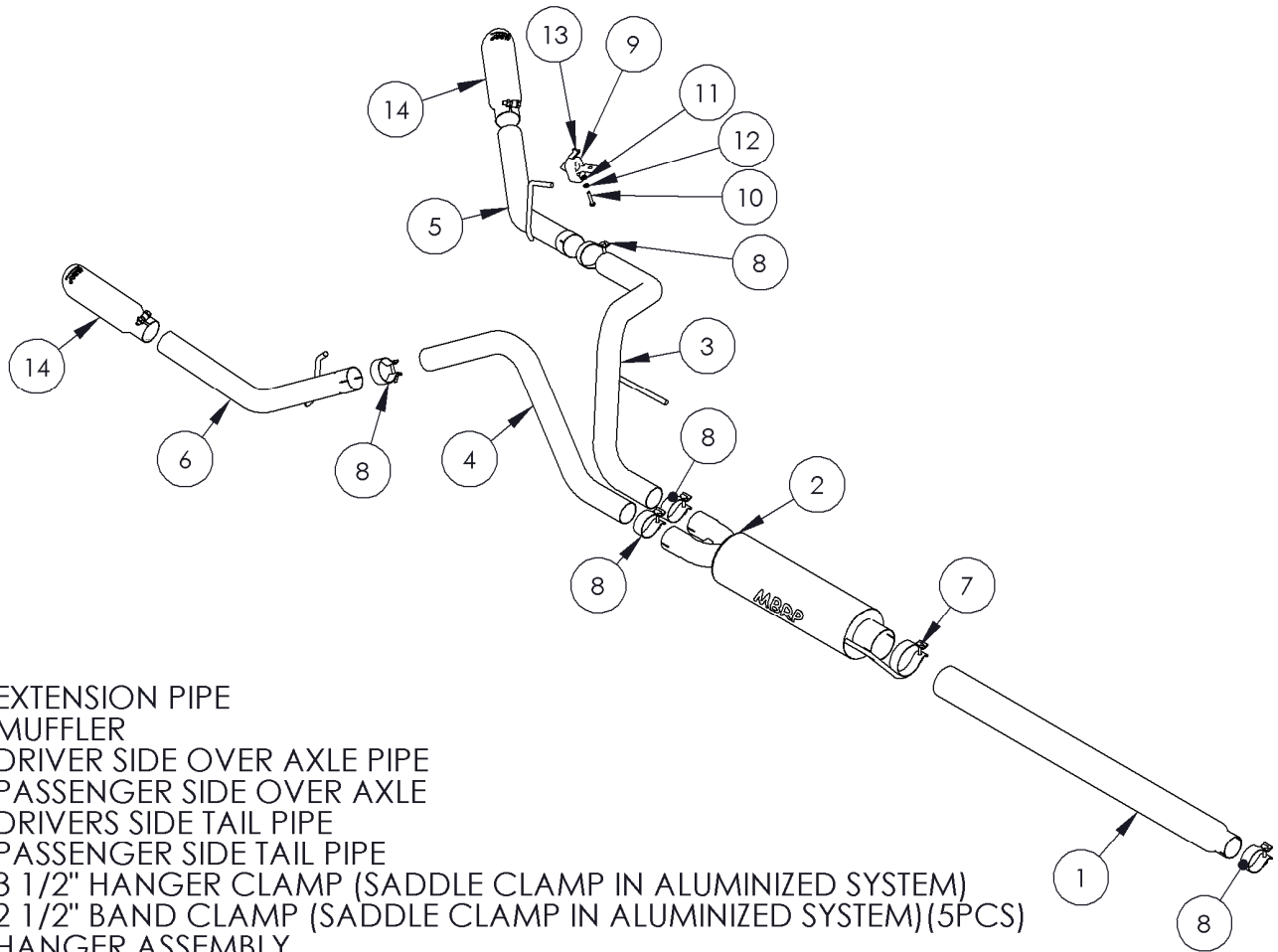


S5204

04-08 F150 4.6L 5.4L, EC/CC 6
1/2' & 5 1/2' BED CAT BACK
DUAL SPLIT



1. EXTENSION PIPE
2. MUFFLER
3. DRIVER SIDE OVER AXLE PIPE
4. PASSENGER SIDE OVER AXLE
5. DRIVERS SIDE TAIL PIPE
6. PASSENGER SIDE TAIL PIPE
7. 3 1/2" HANGER CLAMP (SADDLE CLAMP IN ALUMINIZED SYSTEM)
8. 2 1/2" BAND CLAMP (SADDLE CLAMP IN ALUMINIZED SYSTEM)(5PCS)
9. HANGER ASSEMBLY
10. 5/16" X 1 1/2" HEX BOLT
11. 5/16" WASHER
12. 5/16" LOCK WASHER
13. U-NUT 5/16"
14. EXHAUST TIP (2PCS)

PLEASE READ BEFORE STARTING INSTALATION

While MBRP Inc. has made every effort to ensure that all components of this system are of superior quality and properly packaged, it is the installer's responsibility to ensure the following before removal of the factory exhaust:

- that ALL components shown above are present.
- that ALL mating components fit together.
- that there are no damaged components.
- that the system you have purchased is appropriate for your vehicle year, model and configuration.
- that the system will not interfere with any modifications previously installed or planned.
- that you have read and understand these instructions.

If you have any questions or are uncertain about any aspect of the installation of this system to your vehicle please contact your dealer before commencing installation.



PERFORMANCE EXHAUST

04-08 Ford F-150 4.6L/5.4L

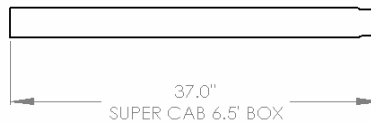
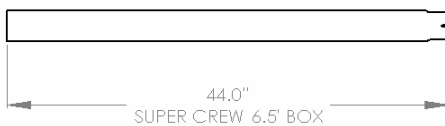
"COOL DUALS"TM

Removal of stock system:

1. Apply a penetrating lubricant liberally to all exhaust fasteners, hangers and rubber insulators.
2. Loosen the clamp located behind the "Y" pipe at the slip joint.
3. Remove the hangers from the rubber insulators and remove the exhaust from the vehicle. If a hoist or hydraulic lift is not being used the tail pipe may need to be cut to clear the rear axle.

Installation of MBRP Inc. Performance Exhaust:

1. Install the expanded end of the extension pipe over the factory exhaust system behind the "Y" pipe and install muffler onto extension pipe. For the Super Crew short box (5' 5") models only cut the extension pipe to a length of 31". Super cab models cut only cut the extension pipe to 37"



2. Install muffler onto extension pipe with the outlets horizontal. Loosely install the hanger clamp around the front muffler joint and into the factory rubber insulator located on the frame near the front of the muffler.
3. Loosely install the driver side over axle pipe connecting it to the outlet closest to the drive shaft. Install the hanger into the rubber insulator located above the muffler outlets.
4. Feed the passenger side over axle pipe over the axle and install it loosely.
5. Feed the expanded end of the driver side tail pipe from the rear of the vehicle over the axle and connect it to the driver side over axle pipe.
6. Move the driver side tail pipe into approximate position. Directly above the tail pipe hanger on the bottom of the frame there will be a square hole with a round hole beside it. Slide the "U" nut provided into the square hole, towards the round hole with the threaded part inside the frame so that the frame is sandwiched by the "U" nut. Attach the hanger assembly provided using the 5/16" hardware supplied. Slide the tail pipe hanger into the hanger assembly.
7. Feed the expanded end of the passenger side tail pipe from the rear of the vehicle over the axle and loosely connect it to the passenger side over axle pipe. Slide the tail pipe hanger into the factory rubber insulator.
8. Install the mirror polished tips. It is recommended to install them at this point to assist with the final system alignment.
9. Install provided clamps to the pipe connections where required. Align the exhaust as required before tightening clamps.
10. Starting at the front of the exhaust tighten all clamps and connections.
11. Check along the whole length of the exhaust system to ensure that there is adequate clearance around the spare tire, fuel and brake lines or any wiring. If any interference is detected relocate or adjust.

Congratulations! You are ready to begin enjoying the improved performance and driving experience of your MBRP Inc. Cool Duals system. We hope you enjoy your purchase.