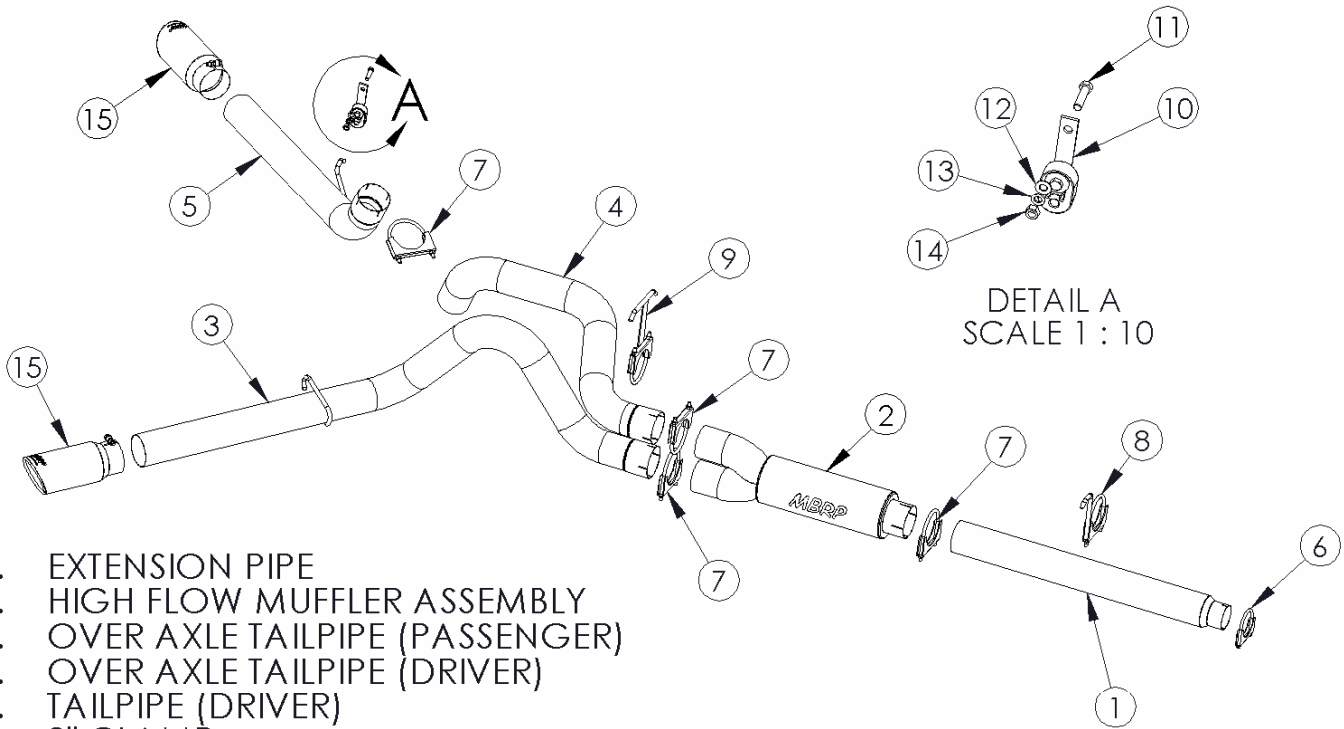


S5208

'99 - '04 FORD SUPERDUTY V10 CAT BACK

MBRP
INC.

PERFORMANCE EXHAUST



DETAIL A
SCALE 1 : 10

1. EXTENSION PIPE
2. HIGH FLOW MUFFLER ASSEMBLY
3. OVER AXLE TAILPIPE (PASSENGER)
4. OVER AXLE TAILPIPE (DRIVER)
5. TAILPIPE (DRIVER)
6. 3" CLAMP
7. 4" CLAMP (4PCS)
8. 4" HANGER CLAMP
9. 4" HANGER CLAMP
10. HANGER KIT
11. 7/16" x 1 1/2" BOLT
12. 7/16" NUT
13. 7/16" WASHER
14. 7/16" LOCK WASHER
15. EXHAUST TIP (2PCS)

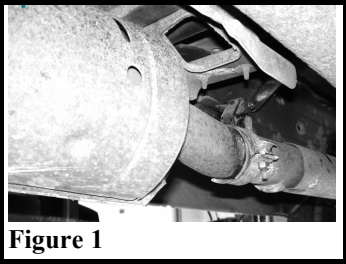
PLEASE READ BEFORE STARTING INSTALATION

While MBRP Inc. has made every effort to ensure that all components of this system are of superior quality and properly packaged it is the installer's responsibility to ensure the following before removal of the factory exhaust:

- that ALL components shown above are present.
- that ALL mating components fit together.
- that there are no damaged components.
- that the system you have purchased is appropriate for your vehicle year, model and configuration.
- that the system will not interfere with any modifications previously installed or planned.
- that you have read and understand these instructions.

If you have any questions or are uncertain about any aspect of the installation of this system to your vehicle please contact your dealer before commencing installation.

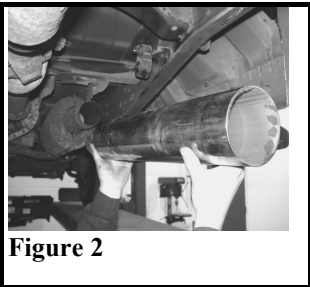
Removal of stock system:



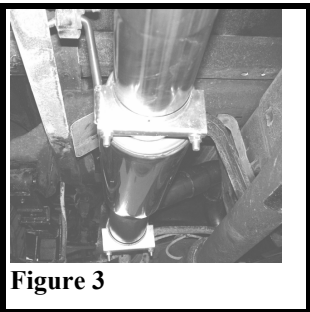
1. Loosen the nut on the band clamp located behind the catalytic converter using a 15mm wrench or socket. **See Figure #1**
2. Remove the muffler and tail pipe from the OEM rubber hangers. On 03-04 trucks remove bottom shock bolt of the passenger side shock to remove the system in one piece. Separate the stock exhaust at the slip joint located behind the catalytic converter and remove the muffler and tail pipe from under the truck. **Re-install the bottom shock bolt.**

Installation of MBRP Inc. Performance Exhaust:

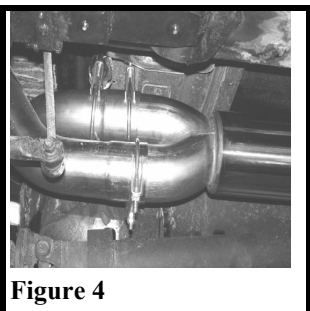
1. Hang the "T" clamp hanger in the factory rubber insulators located right above where the rear of the factory muffler was located. Temporarily hang the muffler in place and measure from the front of the muffler to the short length of factory pipe attached to the rear of the catalytic converter. This will give you the required length for the extension pipe.



2. Cut the extension pipe to the required length and attach it to the factory pipe behind the catalytic converter. **See Figure #2**



3. Install the muffler over the extension pipe. The hanger-clamp is used at the connection between the muffler and- the extension pipe and is installed into the OEM rubber hanger at this position. **See Figure#3**



4. The muffler outlets will be positioned vertically when installed. **See Figure#4**

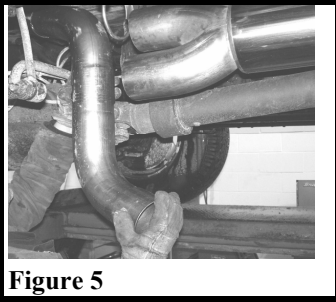


Figure 5

5. Install the over axle pipe connecting the slip joint to the top outlet on the dual outlet muffler. **Do not tighten** allowing for adjustment. **See Figure#5**
6. Install the "T" hanger-clamp into the two OEM rubber hangers located above the outlets of the muffler. The "T" hanger-clamp provided is used at this location to support the exhaust. It is positioned around the over axle pipe and is not used as a sealing clamp.

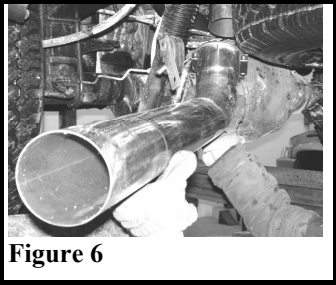


Figure 6

7. Connect the driver's side tail pipe to the over axle pipe. Lift the tail pipe into approximate position. **See Figure #6**

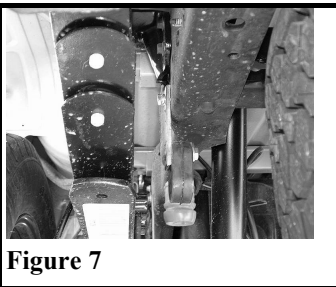


Figure 7

8. Using the factory hole located in the frame, found directly above the tail pipe hanger, attach the rubber hanger provided using the 7/16" nut & bolt supplied. **See Figure #7**

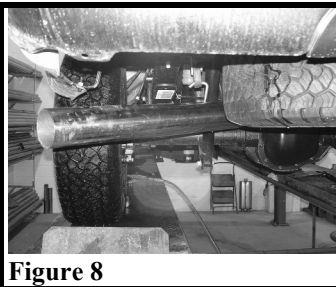


Figure 8

9. Hang the tail pipe using the installed rubber hanger. **See Figure #8**

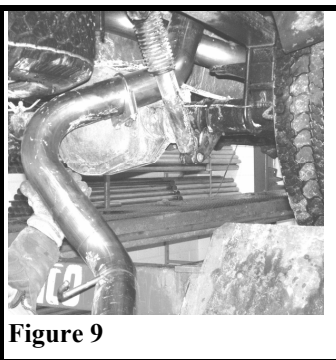


Figure 9

10. Install the passenger side tail pipe from the rear of the truck, over the axle and attach to the lower outlet of the muffler. Install tail pipe hanger into the OEM hanger to complete the driver's side. **See Figure #9**



11. Install provided clamps around pipes where needed. Adjust tail pipes to match and check along the whole length of the exhaust system to ensure that there is adequate clearance around the spare tire, fuel and brake lines or any wiring. If any interference is detected relocate or adjust.
12. Make sure exhaust is in place before tightening clamps. Start at the front of the exhaust system and begin tightening all connections.
13. Install and adjust the **Tip** to suit. Using a 17mm wrench tighten lock bolt located on the **Tip**.



Congratulations! You are ready to begin enjoying the improved performance and driving experience of your MBRP Inc. performance exhaust system. We hope you enjoy your purchase.